



<b>Publication Year</b>	2015
<b>Acceptance in OA</b>	2020-09-11T14:59:04Z
<b>Title</b>	The jet and the disk of the HH 212 low-mass protostar imaged by ALMA: SO and SO<SUB>2</SUB> emission
<b>Authors</b>	PODIO, LINDA, CODELLA, CLAUDIO, Gueth, F., Cabrit, S., Bachiller, R., Gusdorf, A., Lee, C.-F., Lefloch, B., Leurini, Silvia, NISINI, Brunella, Tafalla, M.
<b>Publisher's version (DOI)</b>	10.1051/0004-6361/201525778
<b>Handle</b>	<a href="http://hdl.handle.net/20.500.12386/27332">http://hdl.handle.net/20.500.12386/27332</a>
<b>Journal</b>	ASTRONOMY & ASTROPHYSICS
<b>Volume</b>	581

# The jet and the disk of the HH 212 low-mass protostar imaged by ALMA: SO and SO<sub>2</sub> emission

L. Podio<sup>1</sup>, C. Codella<sup>1</sup>, F. Gueth<sup>2</sup>, S. Cabrit<sup>3,4</sup>, R. Bachiller<sup>5</sup>, A. Gusdorf<sup>3</sup>, C.-F. Lee<sup>6</sup>, B. Lefloch<sup>4</sup>, S. Leurini<sup>7</sup>, B. Nisini<sup>8</sup>, and M. Tafalla<sup>5</sup>

<sup>1</sup> INAF–Osservatorio Astrofisico di Arcetri, Largo E. Fermi 5, 50125 Firenze, Italy  
e-mail: lpodio@arcetri.astro.it

<sup>2</sup> IRAM, 300 rue de la Piscine, 38406 Saint-Martin d'Hères, France

<sup>3</sup> LERMA, Observatoire de Paris, UPMC Univ. Paris 06, PSL Research University, Sorbonne Universités, CNRS, 75014 Paris, France

<sup>4</sup> UJF-Grenoble1/CNRS-INSU, Institut de Planétologie et d'Astrophysique de Grenoble (IPAG) UMR 5274, Grenoble 38041, France

<sup>5</sup> IGN, Observatorio Astronómico Nacional, Alfonso XIII 3, 28014 Madrid, Spain

<sup>6</sup> Academia Sinica Institute of Astronomy and Astrophysics, PO Box 23-141, Taipei 106, Taiwan

<sup>7</sup> Max-Planck-Institut für Radioastronomie, Auf dem Hügel 69, 53121 Bonn, Germany

<sup>8</sup> INAF, Osservatorio Astronomico di Roma, via di Frascati 33, 00040 Monte Porzio Catone, Italy

Received 1 February 2015 / Accepted 15 May 2015

## ABSTRACT

**Context.** The investigation of the disk formation and jet launching mechanism in protostars is crucial to understanding the earliest stages of star and planet formation.

**Aims.** We aim to constrain the physical and dynamical properties of the molecular jet and disk of the HH 212 protostellar system at unprecedented angular scales, exploiting the capabilities of the Atacama Large Millimeter Array (ALMA).

**Methods.** The ALMA observations of HH 212 in emission lines from sulfur-bearing molecules, SO 9<sub>8–8</sub>–7, SO 10<sub>11–10</sub>–10, SO<sub>2</sub> 8<sub>2,6–7</sub>–1,7, are compared with simultaneous CO 3–2, SiO 8–7 data. The molecules column density and abundance are estimated using simple radiative transfer models.

**Results.** SO 9<sub>8–8</sub>–7 and SO<sub>2</sub> 8<sub>2,6–7</sub>–1,7 show broad velocity profiles. At systemic velocity, they probe the circumstellar gas and the cavity walls. Going from low to high blue- and red-shifted velocities the emission traces the wide-angle outflow and the fast (~100–200 km s<sup>-1</sup>), collimated (~90 AU) molecular jet revealing the inner knots with timescales ≤50 yr. The jet transports a mass-loss rate ≥0.2–2×10<sup>-6</sup> M<sub>⊙</sub> yr<sup>-1</sup>, implying high ejection efficiency (≥0.03–0.3). The SO and SO<sub>2</sub> abundances in the jet are ~10<sup>-7</sup>–10<sup>-6</sup>. SO 10<sub>11–10</sub> emission is compact and shows small-scale velocity gradients, indicating that it originates partly from the rotating disk previously seen in HCO<sup>+</sup> and C<sup>17</sup>O, and partly from the base of the jet. The disk mass is ≥0.002–0.013 M<sub>⊙</sub> and the SO abundance in the disk is ~10<sup>-8</sup>–10<sup>-7</sup>.

**Conclusions.** SO and SO<sub>2</sub> are effective tracers of the molecular jet in the inner few hundreds AU from the protostar. Their abundances indicate that 1–40% of sulfur is in SO and SO<sub>2</sub> due to shocks in the jet/outflow and/or to ambipolar diffusion at the wind base. The SO abundance in the disk is 3–4 orders of magnitude larger than in evolved protoplanetary disks. This may be due to an SO enhancement in the accretion shock at the envelope-disk interface or in spiral shocks if the disk is partly gravitationally unstable.

**Key words.** stars: formation – ISM: jets and outflows – ISM: molecules – ISM: individual objects: HH 212

## 1. Introduction

The first steps of the formation of a low-mass star are regulated by the simultaneous effects of the mass accretion onto the star and the ejection of matter from the stellar-disk system. As a result, protostars (the so-called Class 0 objects) are characterised by the occurrence of fast bipolar jets flowing perpendicular to the plane of accretion disks. In practice, although the precise launch region (star, inner disk edge at ~0.1 AU, outer disk at ~0.1–10 AU) remains unknown (e.g. Ferreira et al. 2006), jets are thought to remove excess angular momentum from the star-disk system, thus allowing disk accretion onto the central object. Unfortunately, the observations of the jet-disk pristine systems in deeply embedded protostars are very difficult to perform given the small scales involved as well as the occurrence of numerous other kinematical components involved in the star formation recipe (cavities of swept-up material, infalling envelope, static ambient cloud).

The HH 212 region in Orion (at 450 pc) can be considered an ideal laboratory to investigate the interplay of infall, outflow, and rotation in the earliest evolutionary phases of the star forming process. HH 212 is a low-mass Class 0 source driving a symmetric and bipolar jet extensively observed in typical molecular tracers such as H<sub>2</sub>, SiO, and CO (e.g. Zinnecker et al. 1998). High-spatial resolution observations (down to ≈0′.3–0′.4) performed with the SubMillimeter Array (SMA; Lee et al. 2006, 2007a, 2008), the IRAM Plateau de Bure (PdB) interferometer (Codella et al. 2007; Cabrit et al. 2007, 2012), and the Atacama Large Millimeter Array (ALMA; see Lee et al. 2014; Codella et al. 2014a) reveal the inner ±1″–2″ = 450–900 AU collimated jet (width ≈100 AU) close to the protostar. HH 212 is also associated with a flattened rotating envelope in the equator perpendicular to the jet axis observed firstly with the NRAO Very Large Array (VLA) in NH<sub>3</sub> emission by Wiseman et al. (2001) on 6000 AU scales. More recent SMA and ALMA observations in the CO isotopologues and HCO<sup>+</sup> on ~2000, 800 AU scales

indicates that the flattened envelope is rotating and infalling onto the central source, and can therefore be identified as a pseudo-disk according to magnetised core collapse models (Lee et al. 2006, 2014). In addition, a compact ( $\leq 120$  AU), optically thick dust peak is observed by Codella et al. (2007), Lee et al. (2006, 2014) and attributed to an edge-on disk rather than the inner envelope. This seems to be confirmed by  $\text{HCO}^+$  and  $\text{C}^{17}\text{O}$  emission showing signatures of a compact disk of radius  $\sim 90$  AU Keplerian rotating around a source of  $\approx 0.2\text{--}0.3 M_{\odot}$  (Lee et al. 2014; Codella et al. 2014a). Keplerian rotating disks had previously only been observed towards other three Class 0 objects: IRAS 4A2 (Choi et al. 2010), L1527 (Tobin et al. 2012; Sakai et al. 2014), and VLA1623A (Murillo et al. 2013), but HH 212 can be considered as the only object clearly revealing *both* a disk and a fast collimated jet, calling for further observations aimed to characterise its inner regions.

Recent observations show that SO can be used to image high-velocity protostellar jets, similar to a standard tracer such as SiO (Lee et al. 2010; Tafalla et al. 2010; Codella et al. 2014b). However, only two protostellar jets have so far been clearly mapped in SO lines: HH 211 and NGC 1333-IRAS 2A, and estimates of the SO abundance have only been derived for HH 211. On the other hand, sulfur bearing species have long been searched in protoplanetary disks associated with evolved young stellar objects (i.e. Class I-II) but only CS has been routinely observed while SO is hard to detect: Dutrey et al. (2011) reported no detection of SO (and  $\text{H}_2\text{S}$ ) from three prototypical protoplanetary disks; Fuente et al. (2010) reported a detection in the disk of the T Tauri star AB Aur; and Guilloteau et al. (2013) showed that SO is exceptionally observed in disks with only one definite detection on a sample of 42 T Tauri and Herbig Ae stars towards 04302+2247. The statistics regarding disks around Class 0 protostars is even poorer. The only case is represented by L1527, where Sakai et al. (2014) found that SO, as observed by ALMA, originates from the outer disk near the centrifugal barrier, and its emission is argued to be enhanced by an accretion shock. Observations of HH 212 in the SO  $9_8\text{--}8_7$  line obtained with the SMA by Lee et al. (2007a) suggest that SO may have two components: a low-velocity one originating in the inner rotating envelope/pseudo-disk and an high-velocity one from the jet. However, a detailed analysis of these two components was prevented by the lack of angular resolution and sensitivity.

In this paper, we exploit the unprecedented combination of high spatial resolution and high sensitivity of ALMA to image and characterise both the molecular jet and the disk around the HH 212 protostar through SO and  $\text{SO}_2$  lines. To evaluate the reliability of SO and  $\text{SO}_2$  lines as tracers of shock chemistry and/or high-density gas in the disk, the SO and  $\text{SO}_2$  spatio-kinematical properties are compared with a well-known shock chemistry tracer (SiO), with a universal outflow tracer not sensitive to density or chemistry (CO), and with a disk tracer ( $\text{C}^{17}\text{O}$ ). The ALMA observations of SO and  $\text{SO}_2$  emission presented in Sect. 2 are at higher angular resolution than previous SMA observations by Lee et al. (2007a;  $HPBW = 0''.65 \times 0''.47$ , i.e. around a factor 4 better than at SMA,  $HPBW = 1''.16 \times 0''.84$ ) and  $\sim 100$  times more sensitive ( $\sigma \sim 3\text{--}4$  mJy/beam/ $0.43 \text{ km s}^{-1}$  with ALMA and  $\sigma \sim 450$  mJy/beam/ $\text{km s}^{-1}$  with SMA). This allows us to disentangle for the first time the origin of the different velocity components in SO and  $\text{SO}_2$  and to probe the different structures in the compact circumstellar region, i.e. the cavity walls, the outflow, the molecular jet, the envelope, and the disk (see Sect. 3). The simultaneous observation of the SiO 8–7 and CO/ $\text{C}^{17}\text{O}$  3–2 lines presented in Codella et al. (2014a) allows the determination of the molecule abundances and the physical

**Table 1.** Properties of the observed transitions.

Line	$\nu_0^a$ (MHz)	$E_{\text{up}}$ (K)	$S_{ij} \mu^2$ ( $\text{D}^2$ )	$\log_{10} A_{ij}$ ( $\text{s}^{-1}$ )
$\text{SO}_2$ $8_{2,6}\text{--}7_{1,7}$	334 673.352	43	4.9	–3.9
SO $10_{11}\text{--}10_{10}$	336 553.346	143	0.3	–5.2
$\text{C}^{17}\text{O}$ 3–2	337 061.130	32	0.04	–5.6
CO 3–2	345 795.990	33	0.04	–5.6
SO $9_8\text{--}8_7$	346 528.481	79	21.5	–3.3
SiO 8–7	347 330.631	75	77.0	–2.7

**Notes.** <sup>(a)</sup> From the JPL molecular database (Pickett et al. 1998).

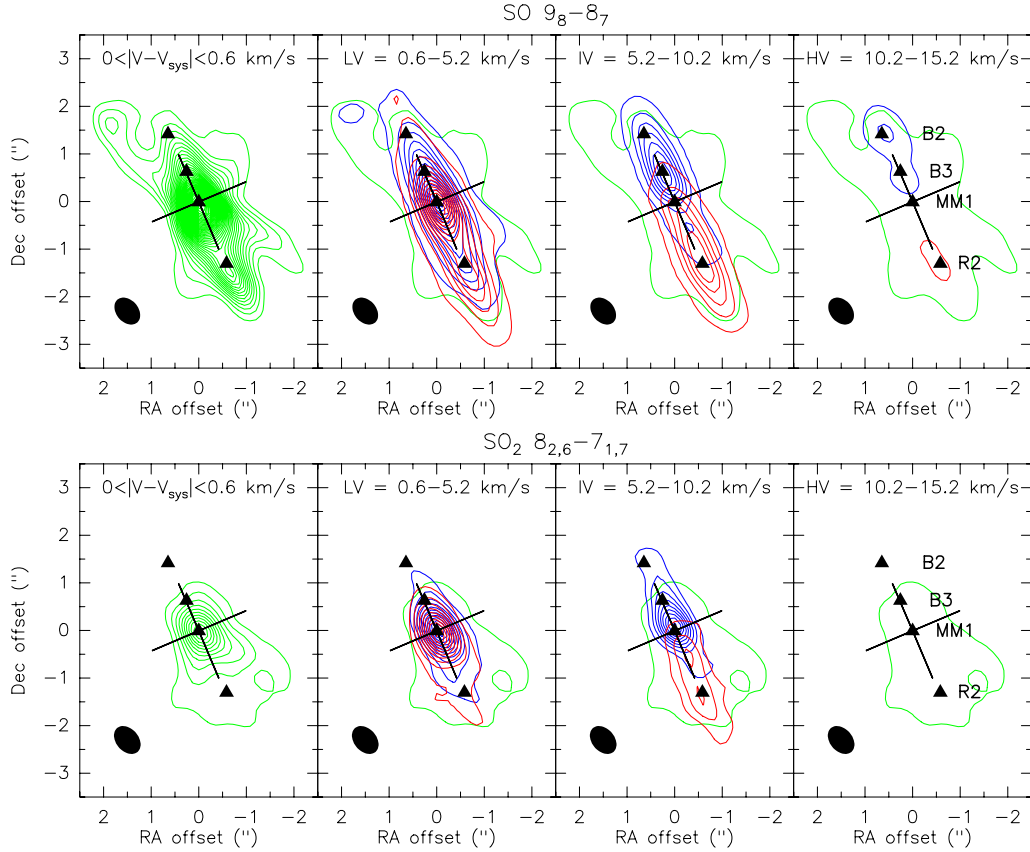
and dynamical properties of the jet and disk (see Sect. 4). Finally, our conclusions are summarised in Sect. 5.

## 2. Observations and data reduction

We observed HH 212 in Band 7 in the extended configuration of the ALMA Early Science Cycle 0 operations on December 1 2012 using 24 antennas of 12-m. The shortest baseline was about 20 m and the longest 360 m, hence the maximum unfiltered scale is of  $3''$  at  $850 \mu\text{m}$ . The properties of the observed SO  $9_8\text{--}8_7$ , SO  $10_{11}\text{--}10_{10}$ , and  $\text{SO}_2$   $8_{2,6}\text{--}7_{1,7}$  transitions are summarised in Table 1 (frequency  $\nu_0$  in MHz, upper level energy  $E_{\text{up}}$  in K,  $S_{ij} \mu^2$  in  $\text{D}^2$ , coefficient for radiative decay  $A_{ij}$  in  $\text{s}^{-1}$ ). We also report the properties of the SiO 8–7, CO 3–2, and  $\text{C}^{17}\text{O}$  3–2 transitions observed during the same run and presented by Codella et al. (2014a), which are also analysed to compare with the SO and  $\text{SO}_2$  emission. The obtained data cubes have a spectral resolution of 488 kHz ( $0.42\text{--}0.43 \text{ km s}^{-1}$ ), a typical beam  $FWHM$  of  $0''.65 \times 0''.47$  at  $\text{PA} \sim 49^\circ$ , and an rms noise of  $\sim 3\text{--}4$  mJy/beam in the  $0.43 \text{ km s}^{-1}$  channel. The calibration was carried out following standard procedures and using quasars J0538–440, J0607–085, as well as Callisto and Ganymede. Spectral line imaging and data analysis were performed using the CASA<sup>1</sup> and the GILDAS<sup>2</sup> packages. Offsets are given with respect to the MM1 protostar position as determined from the dust continuum peak by Codella et al. (2014a), i.e.  $\alpha(\text{J2000}) = 05^{\text{h}}43^{\text{m}}51^{\text{s}}.41$ ,  $\delta(\text{J2000}) = -01^{\circ}02'53''.17$ . These values are in excellent agreement with those determined through previous SMA and PdBI observations. Velocities are given with respect to the systemic velocity,  $V_{\text{sys}}$ , which is estimated following the same method as in Codella et al. (2014a). They show that the emission in the  $\text{C}^{17}\text{O}$  3–2 and  $\text{C}^{34}\text{S}$  7–6 lines is most extended and most symmetric in the  $0.43 \text{ km s}^{-1}$  wide velocity bin centred at  $+1.13 \pm 0.22 \text{ km s}^{-1}$  and  $+1.42 \pm 0.22 \text{ km s}^{-1}$ , respectively, and assume that  $V_{\text{sys}}$  is the average of these values. For SO  $9_8\text{--}8_7$  and  $\text{SO}_2$   $8_{2,6}\text{--}7_{1,7}$ , the largest extension is observed at  $+1.27 \pm 0.21 \text{ km s}^{-1}$  and  $+1.53 \pm 0.22 \text{ km s}^{-1}$ . The average of the central velocity of  $\text{C}^{17}\text{O}$ ,  $\text{C}^{34}\text{S}$ , SO, and  $\text{SO}_2$  gives  $V_{\text{sys}} = +1.3 \pm 0.2 \text{ km s}^{-1}$ , in agreement with the value adopted by Codella et al. (2014a). Despite the coarse velocity binning, all the lines indicate a systemic velocity significantly smaller than the value determined by Wiseman et al. (2001,  $+1.6 \pm 0.1 \text{ km s}^{-1}$ ), and the value adopted by Lee et al. (2006, 2007a, 2014,  $+1.7 \pm 0.1 \text{ km s}^{-1}$ ). As argued by Codella et al. (2014a), this discrepancy might be because the  $\text{C}^{17}\text{O}$ ,  $\text{C}^{34}\text{S}$ , SO, and  $\text{SO}_2$  emission seen by ALMA probes the gas motion on much smaller spatial scales ( $\leq 1350$  AU) than the ammonia

<sup>1</sup> <http://casa.nrao.edu>

<sup>2</sup> <http://www.iram.fr/IRAMFR/GILDAS>



**Fig. 1.** Channel maps of SO  $9_8-8_7$  (top) and SO<sub>2</sub>  $8_{2,6}-7_{1,7}$  (bottom) at systemic, low (LV), intermediate (IV), and high (HV) velocities (panels from left to right). The green, blue, and red contours trace the emission at systemic velocity and over the labelled blue- and red-shifted velocity intervals ( $|V - V_{\text{sys}}|$ ). The lowest contour of the emission at systemic velocity is shown in all panels. The first contour is at  $5\sigma$  for SO and  $3\sigma$  for SO<sub>2</sub> with steps of  $5\sigma$  ( $V_{\text{sys}}$ ) and  $20\sigma$  (LV, IV, HV) for SO and  $3\sigma$  for SO<sub>2</sub> ( $1\sigma \sim 3-4$  mJy/beam/ $0.43$  km s<sup>-1</sup>). The tilted black cross is centred at the source position and indicates the jet and the disk PA ( $\text{PA}_{\text{jet}} = 22^\circ$ ,  $\text{PA}_{\text{disk}} = 112^\circ$ ). The ellipse in the bottom-left corner shows the beam HPBW of the line emission maps ( $0''.65 \times 0''.47$ ,  $\text{PA} = 49^\circ$ ). The triangles indicate the emission peaks along the blue and red lobes.

observed by Wiseman et al. (2001,  $\sim 6000$  AU). Moreover, SO and SO<sub>2</sub> line peaks towards the MM1 protostar are red-shifted by  $\sim +1$  km s<sup>-1</sup> with respect to the velocity where they show the maximum spatial extent (see Sect. 3.4). This may be because of the optical depth effects, and suggests that adopting the velocity where the ambient gas show the maximum extent may be more accurate than using the line peak velocity to define  $V_{\text{sys}}$ . The results we present, however, are not dependent on the  $0.3$  km s<sup>-1</sup> velocity difference between the different  $V_{\text{sys}}$  estimates.

### 3. Results

To constrain the origin of the detected SO  $9_8-8_7$  and SO<sub>2</sub>  $8_{2,6}-7_{1,7}$  lines, we define the following four velocity intervals over which the emission show different morphologies and kinematic properties<sup>3</sup>:

- systemic velocity:  $0 < |V - V_{\text{sys}}| < 0.6$  km s<sup>-1</sup>;
- low velocity (LV hereafter):  $0.6 < |V - V_{\text{sys}}| < 5.2$  km s<sup>-1</sup>;
- intermediate velocity (IV hereafter):  $5.2 < |V - V_{\text{sys}}| < 10.2$  km s<sup>-1</sup>;
- high velocity (HV hereafter):  $10.2 < |V - V_{\text{sys}}| < 15.2$  km s<sup>-1</sup>.

Figure 1 shows channel maps of the SO  $9_8-8_7$  and SO<sub>2</sub>  $8_{2,6}-7_{1,7}$  emission in the four velocity intervals defined

<sup>3</sup> The defined velocity intervals are the same as in Cabrit et al. (2007).

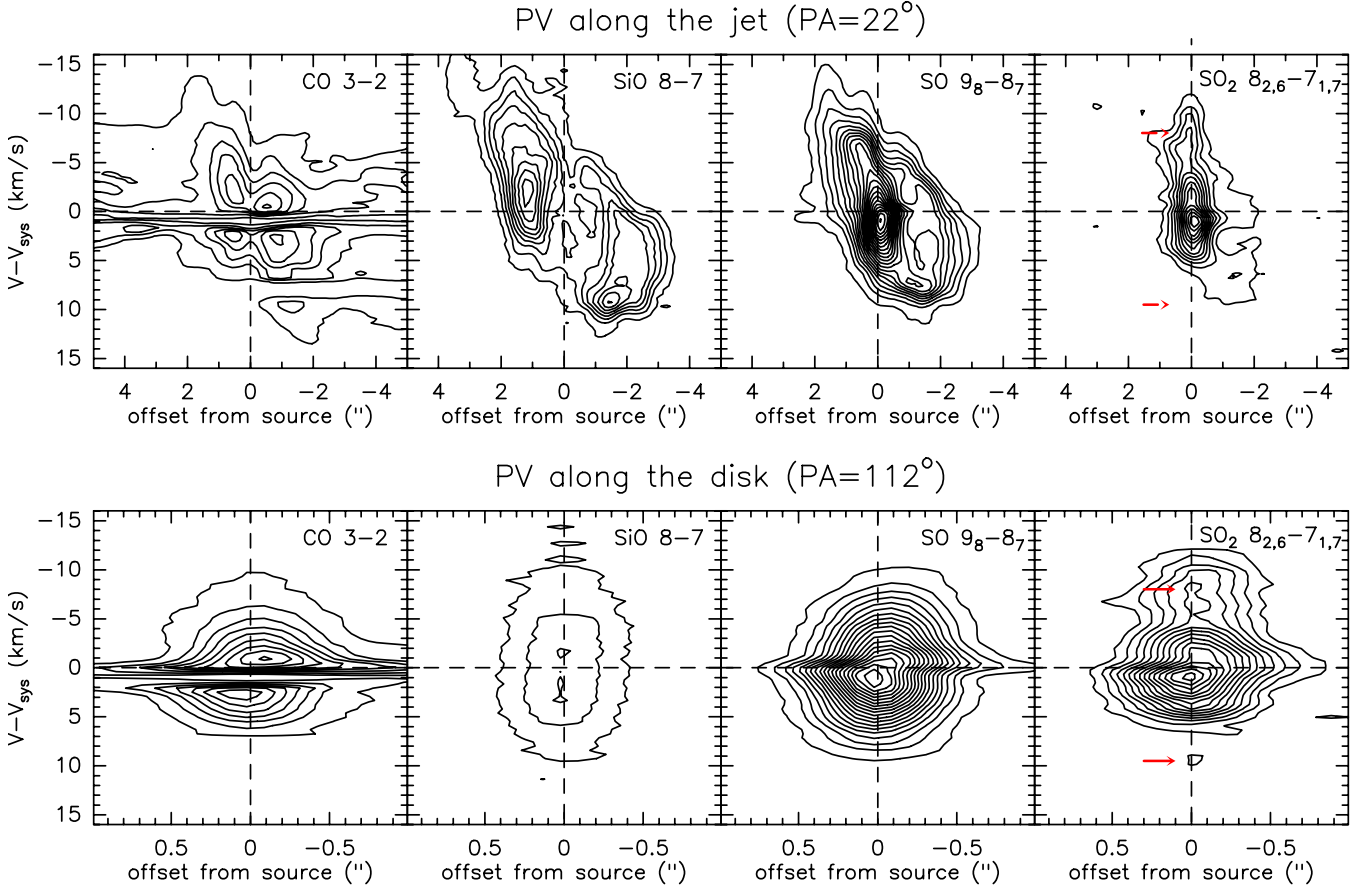
above. In the following sections we discuss the origin and the properties of the different SO and SO<sub>2</sub> velocity components.

#### 3.1. The cavity walls

At systemic velocity, SO  $9_8-8_7$  and SO<sub>2</sub>  $8_{2,6}-7_{1,7}$  peak at the source position (see left panels of Fig. 1). This may be because of a density enhancement in the circumstellar region, as suggested by the modelling of HCO<sup>+</sup> 4–3 emission (Lee et al. 2014), and/or to an enhancement of the SO and SO<sub>2</sub> abundances due to dust grain mantles sublimation and release of sulphur-bearing species in the gas phase. The SO  $9_8-8_7$  emission also extends in a wide-angle biconical structure around the direction of the H<sub>2</sub>/SiO jet, which extends up to  $2''-3''$  distance from source and up to  $\pm 0.6$  km s<sup>-1</sup> with respect to systemic velocity. Also the SO<sub>2</sub> emission shows a similar morphology but only southern to the source. Given the high critical density of the observed SO and SO<sub>2</sub> transitions ( $n_{\text{cr}} \sim 2 \times 10^6$  cm<sup>-3</sup> for gas temperatures of 50–100 K) and the similarity with the C<sup>34</sup>S emission detected by Codella et al. (2014a), this emission is believed to originate in the compressed, swept-up gas in the outflow cavity walls.

#### 3.2. The outflow

At low velocities, the SO  $9_8-8_7$  and SO<sub>2</sub>  $8_{2,6}-7_{1,7}$  emission is bipolar and collimated along the jet direction. Blue- and red-shifted LV emission largely overlap in the two lobes similar



**Fig. 2.** From left to right: position-velocity (PV) diagram of CO 3–2, SiO 8–7, SO 9<sub>8</sub>–8<sub>7</sub>, and SO<sub>2</sub> 8<sub>2,6</sub>–7<sub>1,7</sub> lines obtained along the jet ( $PA_{\text{jet}} = 22^\circ$ , top) and the disk ( $PA_{\text{disk}} = 112^\circ$ , bottom). Horizontal and vertical dashed lines mark  $V_{\text{sys}} = +1.3 \text{ km s}^{-1}$  and the continuum peak MM1. The red arrows on the SO<sub>2</sub> 8<sub>2,6</sub>–7<sub>1,7</sub> PV indicate emission from complex organic molecules, which is blended with the SO<sub>2</sub> emission at the source position. For CO 3–2, SiO 8–7, SO 9<sub>8</sub>–8<sub>7</sub>, SO<sub>2</sub> 8<sub>2,6</sub>–7<sub>1,7</sub> the first contour is at  $5\sigma$  ( $\sigma = 10 \text{ mJy}$  for SiO,  $4 \text{ mJy}$  for SO, and  $3 \text{ mJy}$  for SO<sub>2</sub>) with steps of  $10\sigma$  (CO, SiO, and SO), and  $5\sigma$  (SO<sub>2</sub>).

to SiO 5–4 and 8–7 (Codella et al. 2007, 2014a; Lee et al. 2007a). The emission has a transverse *FWHM* of  $\sim 0''.56$ , which implies an intrinsic width of  $\sim 0''.3 = 135 \text{ AU}$  after correction for the ALMA HPBW ( $\sim 0''.47$  in the transverse direction), i.e. larger than the SiO jet width measured by Cabrit et al. (2007,  $\sim 90 \text{ AU}$  for all velocity components). This indicates that the LV component, with large blue/red overlap, is probing a slower wider-angle outflow surrounding the narrow HV jet (see the following section).

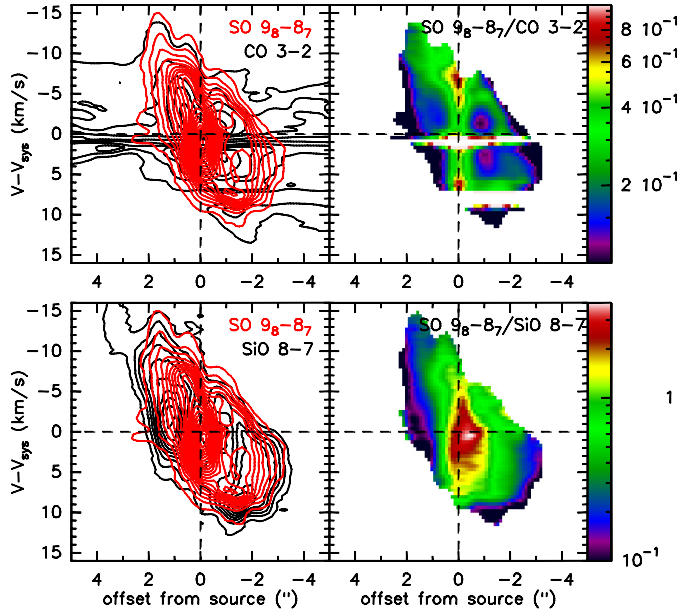
### 3.3. The fast and collimated molecular jet

Figure 1 shows that as we move to intermediate and high velocities, SO 9<sub>8</sub>–8<sub>7</sub> and SO<sub>2</sub> 8<sub>2,6</sub>–7<sub>1,7</sub> blue- and red-shifted emission only slightly overlap and become more and more collimated. The *FWHM* is  $\sim 0''.5$ , which translates into an intrinsic width of  $\sim 0''.2$ , i.e.  $\sim 90 \text{ AU}$ , after correction for the beam HPBW across the jet ( $\sim 0''.47$ ). Assuming an inclination angle  $i \sim 4^\circ$  (Claussen et al. 1998) the de-projected gas velocity is  $V \sim 70\text{--}210 \text{ km s}^{-1}$ . The inferred velocity and width are in perfect agreement with those estimated from SiO 5–4 emission (see Codella et al. 2007; Cabrit et al. 2007) and indicate that, for radial velocities larger than  $5 \text{ km s}^{-1}$ , SO and SO<sub>2</sub> trace the molecular jet.

To further investigate the effectiveness of SO and SO<sub>2</sub> as tracers of the molecular jet, position-velocity diagrams (PVs) of SO and SO<sub>2</sub> emission along and perpendicular to the jet direction

( $PA_{\text{jet}} = 22^\circ$ ,  $PA_{\text{disk}} = 112^\circ$ ) are extracted and compared with the PVs of CO 3–2 and SiO 8–7. Figure 2 shows that the considered tracers have different spatio-kinematical properties. While SiO traces only jet emission with no contamination from ambient gas, SO and SO<sub>2</sub> are dominated by cloud and outflow emission at systemic and low velocities. Moreover, the LV and IV SO emission shows accelerating “arms”, from systemic velocity at the source position to  $\sim \pm 8 \text{ km s}^{-1}$  at  $\sim \pm 1''\text{--}1''.5$  distance from source, which are not seen in SiO. These arms suggest that some SO/SO<sub>2</sub>-rich gas from the circumstellar envelope or disk may be continuously accelerated to high velocities away from the source, either by interaction with the fast jet or by magnetocentrifugal forces operating on envelope/disk scales (e.g. Ciardi & Hennebelle 2010; Panoglou et al. 2012). Similar to SO and SO<sub>2</sub>, CO 3–2 traces multiple components depending on velocity (the envelope, the outflow, the jet). Moreover, the CO PVs show a strong absorption feature at slightly red-shifted velocity ( $\sim +1 \text{ km s}^{-1}$ ). Despite the different behaviours of the considered tracers, Fig. 3 shows that for velocities larger than  $\sim \pm 8 \text{ km s}^{-1}$  the PV diagram of SO along the jet is very similar to that of CO 3–2 and SiO 8–7, suggesting that at high velocities all tracers probe the same jet component. This in turn allows us to compare the emission from SO and CO at high velocities and to estimate the abundances of SO and SO<sub>2</sub> in the jet by comparing their column densities with that of CO 3–2 (see Sect. 4.2).

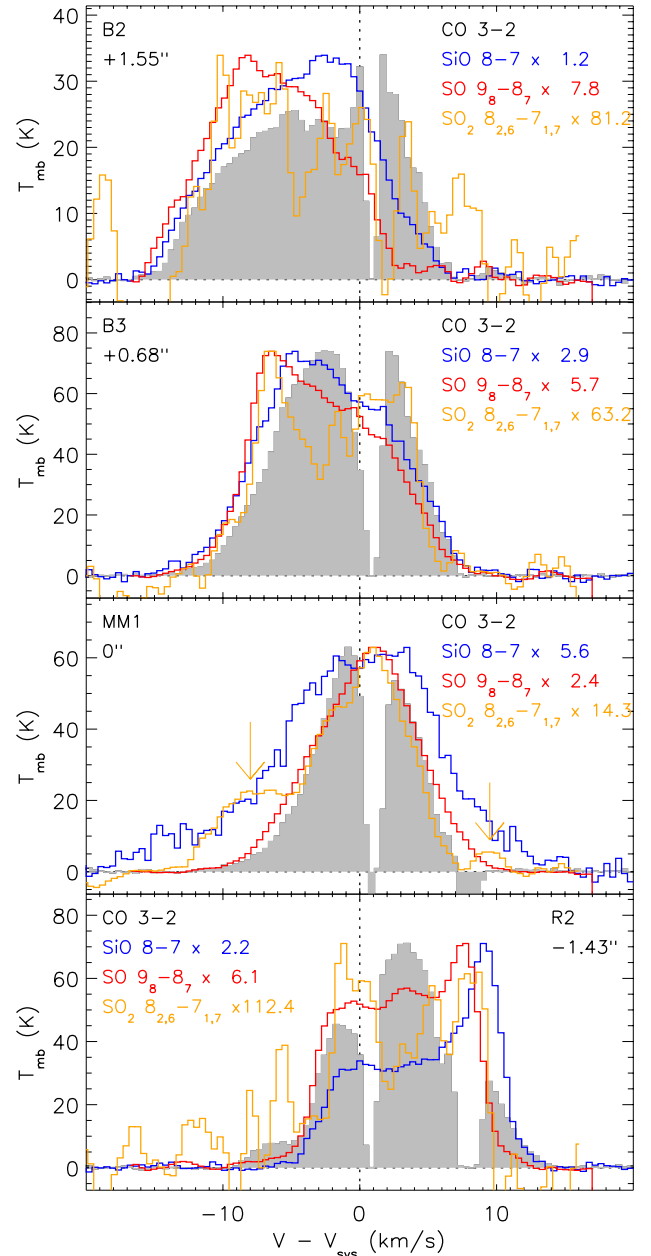
Figure 1 shows that the SO 9<sub>8</sub>–8<sub>7</sub> and SO<sub>2</sub> 8<sub>2,6</sub>–7<sub>1,7</sub> IV and HV emission has three emission peaks, or knots, marked



**Fig. 3.** Left panels: PV of SO 9<sub>8</sub>-8<sub>7</sub> emission along the jet PA (in red) is overlotted on SiO 8-7 and CO 3-2 PVs (in black, top, and bottom panels, respectively). Right panels: ratio of the SO 9<sub>8</sub>-8<sub>7</sub> PV to the SiO 8-7 and CO 3-2 PV (top and bottom panels, respectively). The colour scale is logarithmic.

by black triangles on the SO and SO<sub>2</sub> channel maps, two along the blue lobe (B3 and B2) and one along the red lobe (R2). The knots are located at 0′.68, 1′.55, and 1′.43, respectively, i.e. at a de-projected distance from the MM1 protostar of around 300, 700, and 650 AU. The B2 and R2 SO/SO<sub>2</sub> knots are roughly coincident with the B2, R2 knots observed in SiO 5-4 emission by Codella et al. (2007) and the SN, SS knots in SiO 8-7 and CO 3-2 emission observed by Lee et al. (2007a). One-dimensional spectra of SO 9<sub>8</sub>-8<sub>7</sub> and SO<sub>2</sub> 8<sub>2,6</sub>-7<sub>1,7</sub> are extracted at the position of the knots using the same synthesised beam, and the obtained intensity profiles ( $T_{\text{mb}}$  in K versus ( $V - V_{\text{sys}}$ ) in km s<sup>-1</sup>) are shown in Fig. 4. From the spectra, we estimate the emission line properties in the knots i.e.: rms noise in K, maximum blue- and red-shifted velocity ( $V_{\text{max,b}}$  and  $V_{\text{max,r}}$  in km s<sup>-1</sup>), full width at zero intensity ( $FWZI$  in km s<sup>-1</sup>), velocity at the emission peak ( $V_{\text{peak}}$  in km s<sup>-1</sup>), main-beam temperature peak ( $T_{\text{mb,peak}}$  in K), and integrated intensity ( $\int T_{\text{mb}} dV$  in K km s<sup>-1</sup>) (see Table 2).

From the velocity at the SO emission peak reported in Table 2, we estimate the knot de-projected velocity,  $V = V_{\text{peak}} / \sin(i)$ , and the knots dynamical timescale,  $\tau_{\text{dyn}} = d/V$ , where  $d$  is the knot de-projected distance from the protostar. We find  $\tau_{\text{dyn}} \sim 15$  yr for B3, and  $\sim 30$  yr for the symmetrically located blue- and red-shifted knots B2 and R2. The position, distance, velocity, and dynamical timescale of the detected SO knots are summarised in Table 4. The inferred dynamical timescales are very low, suggesting that the observed SO emission probes very recent ejection events. These estimates, however, are affected by a large uncertainty because of the assumed inclination angle, the choice of the tracer ( $V_{\text{peak}}$  varies up to a factor 3 depending on the tracer, either SO, SO<sub>2</sub>, or SiO), and the broad line profiles (up to  $\sim 27$  km s<sup>-1</sup>). The line broadening may be caused by the jet geometry and/or by internal jet shocks. In the first case, if the jet is conical and propagates with constant velocity  $V$  at an angle  $i$  to the plane of the sky, the observed maximum blue- and red-shifted velocities (see Table 2)



**Fig. 4.** Intensity profiles of SiO 8-7 (blue), SO 9<sub>8</sub>-8<sub>7</sub> (red), and SO<sub>2</sub> 8<sub>2,6</sub>-7<sub>1,7</sub> (orange) over CO 3-2 (grey) at the knots (B2, B3, R2) and source (MM1) positions. The name and distance of the knots and the normalisation factor to the CO 3-2 peak intensity are indicated at the top of the panels. The orange vertical arrows at the MM1 position indicate emission lines from complex organic molecules, which are blended to the SO<sub>2</sub> line.

imply a jet half-opening angle  $\theta_{\text{max}} \sim 10^\circ$ <sup>4</sup>. This in turn implies a knot de-projected velocity  $V = V_{\text{max}} / \sin(i + \theta_{\text{max}})$  that is about a factor 2 smaller than the de-projected  $V_{\text{peak}}$ , implying a factor 2 larger timescales than those reported in Table 4. Note, however, that the observed line profiles are strongly asymmetric and show broad line wings, unlike the synthetic profile computed by Kwan & Tadamaru (1988) for a conical jet of constant

<sup>4</sup> The jet half-opening angle is  $\tan \theta_{\text{max}} = (R - 1)/(R + 1) \times \tan(i)$ , where  $R$  is the algebraical ratio of maximum to minimum radial velocities and  $i$  the inclination with respect to the plane of the sky (see Codella et al. 2007).

**Table 2.** Properties of the observed emission lines on-source (MM1) and at the position of the knots along the jet.

	rms (K)	$V_{\max,b}^{a,*}$ (km s <sup>-1</sup> )	$V_{\max,r}^{a,*}$ (km s <sup>-1</sup> )	$FWZI^{b,*}$ (km s <sup>-1</sup> )	$V_{\text{peak}}^{c,*}$ (km s <sup>-1</sup> )	$T_{\text{mb,peak}}^d$ (K)	$\int T_{\text{mb}}dV^e$ (K km s <sup>-1</sup> )	$HV_{\text{jet/disk}}^f$ (km s <sup>-1</sup> )	$\int T_{\text{mb}}dV (HV_{\text{jet/disk}})^g$ (K km s <sup>-1</sup> )
CO 3–2									
B2	0.3	-16.8	7.3	24.1	–	33.9 ± 0.3	370.0 ± 1.1	[-8, -15]	82.6 ± 0.5
B3	0.3	-16.8	7.7	24.5	–	73.9 ± 0.3	732.5 ± 0.9	[-8, -15]	46.7 ± 0.4
MM1	0.3	-12.9	7.3	20.2	–	62.9 ± 0.3	424.3 ± 1.0	–	–
R2	0.5	-9.5	16.8	26.2	–	71.1 ± 0.5	567.5 ± 1.6	[+10, +15]	43.3 ± 0.7
SiO 8–7									
B2	0.5	-16.8	8.6	25.4	-2.6	27.6 ± 0.5	350.2 ± 1.6	[-8, -15]	87.0 ± 0.7
B3	0.4	-15.9	11.2	27.1	-4.7	25.2 ± 0.4	294.2 ± 1.3	[-8, -15]	30.5 ± 0.6
MM1	0.3	-19.4	15.9	35.3	3.4	11.2 ± 0.3	163.2 ± 1.1	–	–
R2	0.4	-7.3	14.2	21.5	9.0	31.8 ± 0.4	252.6 ± 1.1	[+10, +15]	32.2 ± 0.5
SO 9 <sub>8</sub> –8 <sub>7</sub>									
B2	0.1	-16.3	6.9	23.2	-8.2	4.4 ± 0.1	49.4 ± 0.4	[-8, -15]	18.5 ± 0.2
B3	0.1	-15.1	9.9	24.9	-6.4	13.1 ± 0.1	140.2 ± 0.5	[-8, -15]	14.6 ± 0.2
MM1	0.1	-12.9	11.6	24.5	1.1	26.0 ± 0.1	238.1 ± 0.4	–	–
R2	0.1	-10.3	12.9	23.2	7.7	11.6 ± 0.1	118.8 ± 0.4	[+10, +15]	2.2 ± 0.2
SO <sub>2</sub> 8 <sub>2,6</sub> –7 <sub>1,7</sub>									
B2	0.1	-14.1	1.8	15.9	-10.2	0.4 ± 0.1	3.7 ± 0.2	[-8, -10]	0.9 ± 0.1
B3	0.1	-11.5	10.9	22.4	-6.5	1.2 ± 0.1	11.6 ± 0.3	[-8, -10]	0.8 ± 0.1
MM1	0.1	-6.0	11.3	17.3	1.0	4.4 ± 0.1	–	–	–
R2	0.1	-7.2	10.0	17.2	-1.2	0.6 ± 0.1	5.9 ± 0.2	[+8, +10]	0.9 ± 0.1
SO 10 <sub>11</sub> –10 <sub>10</sub>									
MM1	0.1	-5.2	4.7	9.9	–	0.7 ± 0.1	4.2 ± 0.3	[-1.9, -3.5] [+1.9, +3.5]	1.4 ± 0.1 0.8 ± 0.1
C <sup>17</sup> O 3–2									
MM1	0.1	-7.7	10.8	18.5	-0.4	7.7 ± 0.1	30.7 ± 0.3	[-1.9, -3.5] [+1.9, +3.5]	5.0 ± 0.1 3.2 ± 0.1

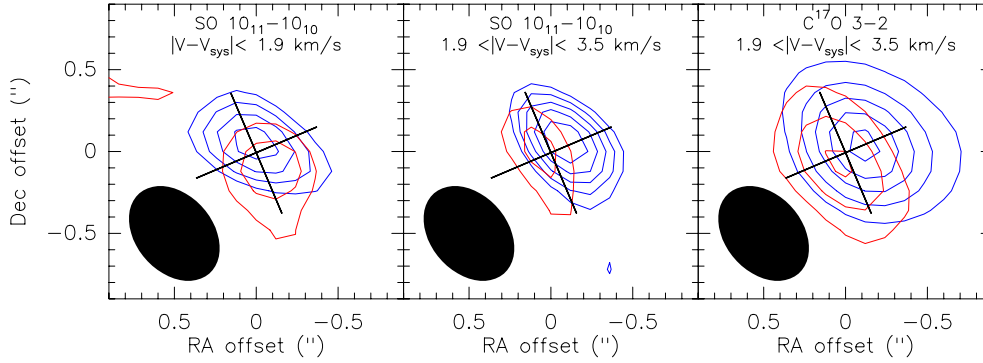
**Notes.** <sup>(\*)</sup> Velocities are in terms of  $V - V_{\text{sys}}$  and the error on the velocity values is half of the spectral element i.e.  $\pm 0.2$  km s<sup>-1</sup>. <sup>(a)</sup> Maximum blue- and red-shifted velocity defined as the velocity where the intensity becomes lower than  $1 \times$  rms noise. <sup>(b)</sup> Full width at zero intensity  $FWZI = |V_{\max,r} - V_{\max,b}|$ . <sup>(c)</sup> Velocity at the emission peak. No value is reported for lines affected by self-absorption, i.e. CO 3–2 and SO 10<sub>11</sub>–10<sub>10</sub>. <sup>(d)</sup> Main-beam temperature at the emission peak. For lines affected by self-absorption  $T_{\text{mb,peak}}$  could be a lower limit. <sup>(e)</sup> Line intensity integrated over the whole velocity profile (i.e. over the FWZI). <sup>(f)</sup> High-velocity range where jet and disk emission are detected. <sup>(g)</sup> Line intensity integrated over  $HV_{\text{jet/disk}}$ . For SO 10<sub>11</sub>–10<sub>10</sub> and C<sup>17</sup>O 3–2,  $\int T_{\text{mb}}dV (HV_{\text{disk}})$  is measured for both the blue- and the red-shifted line wings.

speed seen close to edge-on (see their Fig. 1, dashed curve for  $i = 82.8^\circ$  and  $2\theta_{\text{max}} = 20^\circ$ ). Alternatively, the observed line broadening may be due to an “internal jet shock” in which fast jet material catches up and shocks slower previous ejecta. In this scenario, over-pressured shocked material is squeezed sideways out of the jet beam, producing an expanding bowshock structure in its wake, which causes the observed line broadening. The bowshock scenario is favoured by Codella et al. (2007) and further supported by the SiO maps and transverse PVs of Lee et al. (2008). In that case,  $V_{\text{peak}}$  traces the bow wings while the knot velocity along the jet axis is  $V = V_{\text{max}}/\sin(i)$ , i.e. around a factor 2 larger than the de-projected  $V_{\text{peak}}$ . This would imply a factor two smaller timescales than those reported in Table 4. We conclude that the estimated knot timescales are affected by an uncertainty of a factor 2–3 depending on the origin of the line broadening and the selected knot tracer.

In Fig. 4 the obtained SO 9<sub>8</sub>–8<sub>7</sub> and SO<sub>2</sub> 8<sub>2,6</sub>–7<sub>1,7</sub> intensity profiles are also compared with the profiles of a typical jet tracer, i.e. SiO 8–7 (Codella et al. 2007; Lee et al. 2007a), and a jet/outflow (at high/low velocities, respectively) tracer, i.e. CO 3–2. The intensity profiles are extracted at the same positions and with very similar synthesised beam for all the

lines (differences between the beams are  $\leq 0''.1$ ). The comparison shows that even though the SiO and SO knots are roughly co-spatial, SO and SO<sub>2</sub> peak at higher velocities than SiO in the blue lobe and at lower velocities in the red lobe. This stratification in velocity is a typical signature of shock-excited emission as both the abundances of the observed molecular species and the gas physical conditions (density and temperature) undergo strong gradients in the post-shock cooling region, giving rise to chemical segregation. The different profiles and molecular stratification shown by the symmetrically located knots B2 and R2 suggest different shock conditions in the blue and red lobes within 2'' from source. This asymmetry is in contrast with the symmetry observed on larger scales in H<sub>2</sub> (Zinnecker et al. 1998), and suggests that asymmetries may wash out on large timescales. A detailed comparison of the observed intensity profiles with shock models predictions is out of the scope of this paper and will be presented in Gusdorf et al. (in prep.).

Finally, it should be noted that, even though SO, SO<sub>2</sub>, SiO, and CO show different behaviours at low velocity (i.e. different spatio-kinematical distribution in the PVs and different line profiles and peak velocities), the maximum blue and red velocities are remarkably similar. This indicates that, as also suggested by



**Fig. 5.** Blue- and red- shifted emission of SO  $10_{11}-10_{10}$  at low velocities ( $|V - V_{\text{sys}}| < 1.9 \text{ km s}^{-1}$ , *left panel*) and in the higher velocity range where the emission is consistent with a rotating disk ( $HV_{\text{disk}} : 1.9 < |V - V_{\text{sys}}| < 3.5 \text{ km s}^{-1}$ , *middle panel*) is compared with  $\text{C}^{17}\text{O} 3-2$  emission in the  $HV_{\text{disk}}$  range (*right panel*, Codella et al. 2014a). The tilted black cross indicates the jet (PA =  $22^\circ$ ) and the disk (PA =  $112^\circ$ ) direction. The ellipse in the bottom left corner shows the beam HPBW of the line emission maps ( $0''.65 \times 0''.47$ , PA =  $49^\circ$ ). First contour at  $5\sigma$  with steps of  $5\sigma$  for  $\text{C}^{17}\text{O} 3-2$  and at  $3\sigma$  with steps of  $1\sigma$  for SO  $10_{11}-10_{10}$ .

the comparison of the line PVs in Fig. 3, all the considered lines probe the same jet component at high velocities.

### 3.4. The flattened rotating envelope

As suggested by Lee et al. (2007a), while the high-velocity SO  $9_8-8_7$  emission is clearly associated with the molecular jet, the low velocity emission could arise in the inner rotating envelope and/or in a pseudo-disk. The bottom panels of Fig. 2 shows the PVs of the observed emission lines obtained cutting the data cube perpendicular to the jet PA, i.e. along the disk direction (PA<sub>disk</sub> =  $112^\circ$ ). With the exception of SiO, which shows poor emission along the disk, the other lines show a velocity gradient perpendicular to the jet PA of a few  $\text{km s}^{-1}$  over a scale  $\leq 1''$  (i.e.  $\leq 450 \text{ AU}$ ), which suggests rotation in a flattened envelope and/or a disk with the same rotation sense as observed in  $\text{HCO}^+$  by Lee et al. (2014) and in  $\text{C}^{17}\text{O} 3-2$  by Codella et al. (2014a).

The SO  $9_8-8_7$  and SO<sub>2</sub>  $8_{2,6}-7_{1,7}$  intensity profiles at the position of the MM1 protostar (Fig. 4), peak at slightly red-shifted velocity, i.e.  $\sim +1 \text{ km s}^{-1}$ , where CO  $3-2$  shows a deep absorption feature. This could be a signature of infalling gas. The SO<sub>2</sub>  $8_{2,6}-7_{1,7}$  line profile shows two spectral “bumps” at blue- and red-shifted velocities, which are not detected in the other tracers. The PV diagram in Fig. 2 shows that these spectral features are only seen in a spatially unresolved region towards the MM1 position, and not along the outflow. This suggests that SO<sub>2</sub> is blended with two unidentified lines emitted in the inner few 100 AU of the protostellar envelope. These lines are likely produced by complex organic molecules (COMs) evaporated from the icy mantles of dust grains in the warm circumstellar region ( $T_{\text{dust}} > 100 \text{ K}$ ), as observed towards many other low-luminosity protostars (e.g. Maury et al. 2014). The identification and analysis of these lines is out of the scope of this paper.

### 3.5. SO $10_{11}-10_{10}$ : the compact rotating disk?

Channel maps and position-velocity diagrams along and perpendicular to the jet direction are also obtained for the fainter SO  $10_{11}-10_{10}$  line as shown in Figs. 5 and 6. In contrast to SO  $9_8-8_7$  and SO<sub>2</sub>  $8_{2,6}-7_{1,7}$ , the emission in the SO  $10_{11}-10_{10}$  line is compact ( $\sim 90 \text{ AU}$  scales) and narrow in velocity extending only up to  $\pm 5 \text{ km s}^{-1}$  with respect to systemic. As shown in Fig. 5 the red- and blue-shifted emission peaks are displaced roughly along the jet direction for velocities

$< 1.9 \text{ km s}^{-1}$  (see left panel). However, in the velocity range where  $\text{C}^{17}\text{O} 3-2$  probes a compact ( $\sim 90 \text{ AU}$ ) disk rotating around a  $0.3 \pm 0.1 M_\odot$  star ( $1.9 < |V - V_{\text{sys}}| < 3.5 \text{ km s}^{-1}$ , Codella et al. 2014a), the SO  $10_{11}-10_{10}$  emission peaks are consistently displaced along the disk axis (see middle and right panels). This suggests that the SO emission at those velocities may also originate in the compact disk.

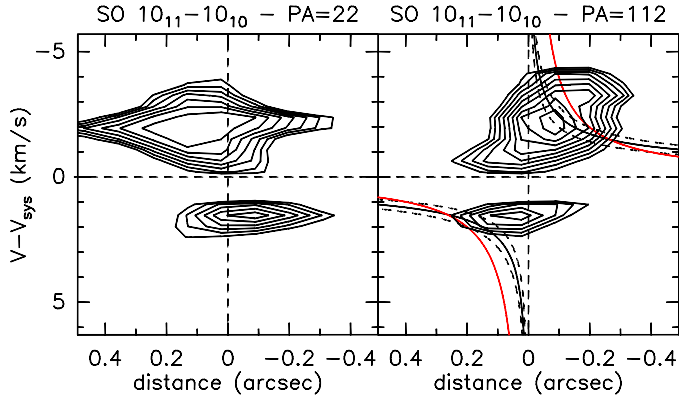
The PV diagram perpendicular to the jet axis in Fig. 6 supports this scenario as it shows a blue and a red lobe, which are consistent with emission from a rotating structure. However, when cutting the data cube along the jet PA the blue- and red-shifted lobes are consistent with jet emission. This indicates that SO  $10_{11}-10_{10}$  partly traces rotating gas in a flattened envelope and/or in a disk, and partly traces the jet.

In Fig. 7, the SO  $10_{11}-10_{10}$  line intensity profile extracted at the source position is compared with  $\text{C}^{17}\text{O} 3-2$  analysed by Codella et al. (2014a). In the  $1.9 < |V - V_{\text{sys}}| < 3.5$  velocity range the SO  $10_{11}-10_{10}$  and  $\text{C}^{17}\text{O} 3-2$  line profiles are very similar suggesting that at those velocities they are tracing the same disk component. However, at low velocities the SO  $10_{11}-10_{10}$  line intensity profile shows a red-shifted absorption feature at  $\sim 0.5 \text{ km s}^{-1}$ . This may be because of the SO  $10_{11}-10_{10}$  higher excitation energy, which makes it less affected by the emission from the circumstellar gas and more sensitive to absorption by the infalling gas. As the observed SO  $10_{11}-10_{10}$  is compact, the detected absorption feature could probe the infall of the outer disk regions, on much smaller scales than the infalling gas traced by CO  $3-2$ .

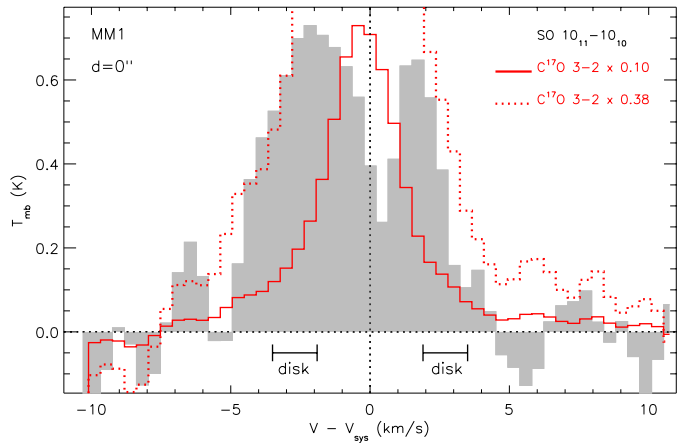
## 4. Discussion

### 4.1. Searching for jet rotation

Magneto hydro-dynamical (MHD) models predict that the jet is launched by magneto-centrifugal forces that lift the gas from the disk along the open magnetic field lines, accelerating and collimating it. According to these models, the jet rotates around its axis carrying away the excess angular momentum from the disk, thus allowing accretion onto the central star. Many recent studies have been devoted to searching for systematic velocity asymmetries across the jet axis as a signature of jet rotation, first at optical wavelengths (e.g. Bacciotti et al. 2002; Coffey et al. 2004) and more recently in the sub-mm and mm range (e.g. Codella et al. 2007; Lee et al. 2007a,b, 2008, 2009; Launhardt et al. 2009).

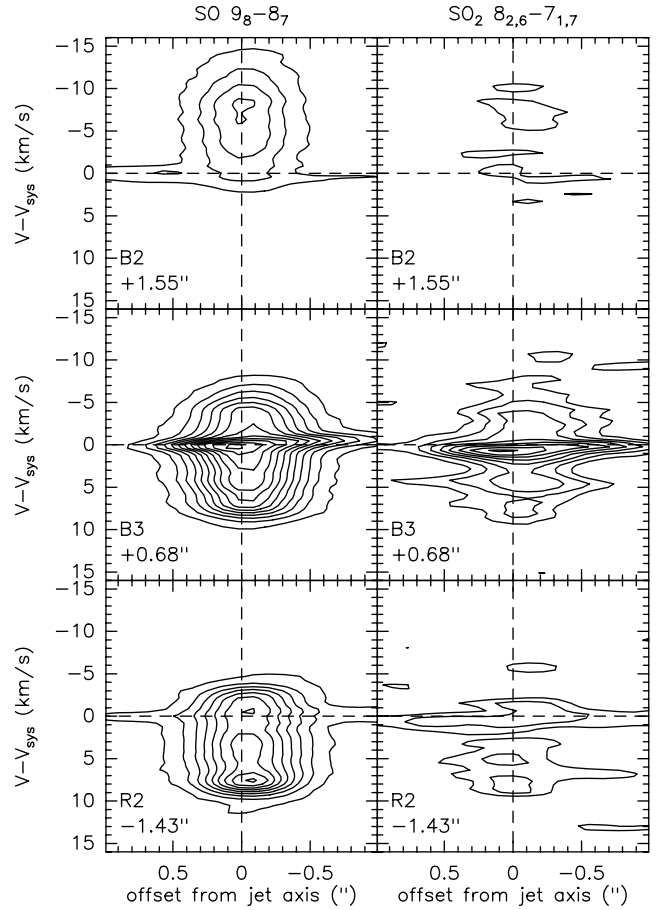


**Fig. 6.** From left to right: position-velocity diagram of SO  $10_{11}-10_{10}$  obtained along the jet ( $PA_{\text{jet}} = 22^\circ$ , left) and the disk ( $PA_{\text{disk}} = 112^\circ$ , right). Horizontal and vertical dashed lines mark  $V_{\text{sys}} = +1.3 \text{ km s}^{-1}$  and the continuum peak MM1. The first contour is at  $6\sigma$  ( $1\sigma = 2 \text{ mJy}$ ) with steps of  $0.5\sigma$ . On the PV along the disk the Keplerian curves for  $M_* = 0.3 \pm 0.1 M_\odot$  (solid and dashed black curves) and the  $r^{-1}$  curve for infalling gas with angular momentum conservation (red curve) are overlotted.



**Fig. 7.** Intensity profiles of SO  $10_{11}-10_{10}$  (grey) and  $C^{17}O$  3–2 (red) extracted at the source position. The horizontal bars in the bottom of the panel indicate the high-velocity range ( $HV_{\text{disk}} = 1.9\text{--}3.5 \text{ km s}^{-1}$ ) where the lines are consistent with a disk origin (Codella et al. 2014a). The normalisation factor to the SO  $10_{11}-10_{10}$  intensity at peak (solid line) and in the blue-shifted  $HV_{\text{disk}}$  range (dotted line) are labelled on the top of the panel.

Tentative rotation measurements have been obtained for HH 112 by Davis et al. (2000), Codella et al. (2007), and Lee et al. (2008). Davis et al. (2000) reported a rotation speed of  $\sim 1.5 \text{ km s}^{-1}$  at a distance of  $\sim 230 \text{ AU}$  from the jet axis in the southern  $H_2$  knot SK1 located at  $2300 \text{ AU}$  distance from the source. However, the velocity asymmetry in the northern lobe would indicate rotation in the opposite sense. Moreover, at these large distances from the driving source and from the jet axis the velocity pattern is likely dominated by effects other than rotation i.e. by interaction with the surrounding cloud in the bowshock wings, and/or jet wiggling and precession (e.g. Correia et al. 2009). More recent high angular resolution measurements in the inner B2 and R2 knots ( $\sim 1''\text{--}2''$  from source) gives contradictory results: Codella et al. (2007) do not observe transverse velocity shifts above  $1 \text{ km s}^{-1}$  in the SiO 5–4 emission with  $0''.78 \times 0''.34$  HPBW resolution, while higher angular resolution SMA observations of SiO 8–7



**Fig. 8.** From left to right: position-velocity diagrams of SO  $9_8-8_7$ , and  $SO_2$   $8_{2,6}-7_{1,7}$  lines obtained perpendicular to the jet axis ( $PA = 112^\circ$ ) at the position of knots B2, B3, and R2. The distance of the knots from the driving MM1 protostar is indicated. The first contour is at  $5\sigma$  ( $\sigma = 4 \text{ mJy}$  for SO, and  $1.5 \text{ mJy}$  for  $SO_2$ ) with steps of  $10\sigma$  (SO), and  $5\sigma$  ( $SO_2$ ).

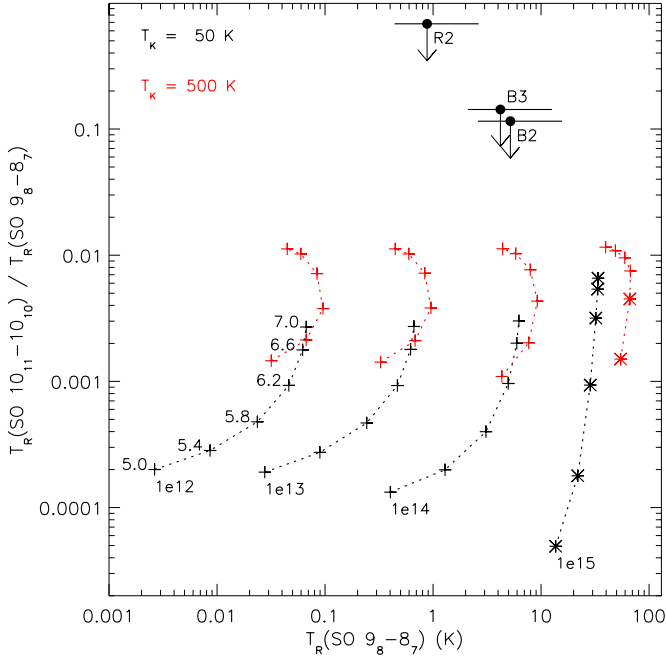
( $HPBW = 0''.36 \times 0''.33$ ) indicate a velocity shift at the tip of the two bow shocks (Lee et al. 2008).

To test the validity of these tentative rotation measurements, we search for velocity asymmetries across the collimated jet by extracting PV diagrams of SO  $9_8-8_7$  and  $SO_2$   $8_{2,6}-7_{1,7}$  emission perpendicular to the jet axis at the positions of knots B2, B3, and R2 (see Fig. 8). The PV diagrams for SiO are not shown as these are at lower resolution with respect to those by Lee et al. (2008). The figure shows no evidence of a velocity gradient across the jet axis, consistent with the high-velocity SO/ $SO_2$  jet being practically unresolved transversally. Higher angular resolution ( $\sim 0''.1$ ), which will be available with the full ALMA array, is needed to properly sample the velocity pattern across the jet width and to provide a reliable test of rotation in the HH 112 jet.

In the PV across the B3 knot, there is a hint of rotation for the gas close to systemic velocity, which could indicate rotation of the outflow cavity as seen in  $C^{34}S$  (see Codella et al. 2014a).

#### 4.2. SO and $SO_2$ abundance in the jet

To constrain the physical conditions of the gas and the SO abundance in the inner jet knots (B3, B2, and R2), the observed SO line intensities (corrected for beam dilution) and ratios (independent of beam dilution) are compared with the predictions of the statistical equilibrium, one-dimensional radiative



**Fig. 9.** SO line temperature ratio  $T_R(\text{SO } 10_{11}-10_{10})/T_R(\text{SO } 9_8-8_7)$  versus intrinsic line temperature  $T_R(\text{SO } 9_8-8_7)$  predicted by RADEX slab models at  $T_K = 50, 500$  K (black and red points/curves). Each curve corresponds to the labelled column density  $N_{\text{SO}}/\Delta V$  increasing from  $10^{12}$  to  $10^{15} \text{ cm}^{-2} (\text{km s}^{-1})^{-1}$  by factors of 10 (left to right). Each dot along the curves corresponds to the labelled  $\log(n_{\text{H}_2})$  (from  $10^5$  to  $10^7 \text{ cm}^{-3}$ ). Optically thin models are marked with a cross, and optically thick models with a star. The black points indicate the upper limit of the SO line ratio and the SO  $9_8-8_7$  intensity corrected for beam dilution in the B2, B3, and R2 knots over the  $\text{HV}_{\text{jet}}$  velocity range.

transfer code RADEX adopting plane parallel slab geometry (van der Tak et al. 2007). Figure 9 shows the SO line temperature ratio,  $T_R(\text{SO } 10_{11}-10_{10})/T_R(\text{SO } 9_8-8_7)$ , versus the SO  $9_8-8_7$  intrinsic line temperature,  $T_R(\text{SO } 9_8-8_7)$ , predicted by RADEX for a reasonable range of kinetic temperatures ( $T_K = 50-500$  K) and  $\text{H}_2$  densities ( $n_{\text{H}_2}$  from  $10^5$  to  $10^7 \text{ cm}^{-3}$ ) (e.g. Cabrit et al. 2007) and for SO column densities ( $N_{\text{SO}}/\Delta V$ ) increasing from  $10^{12}$  to  $10^{15} \text{ cm}^{-2} (\text{km s}^{-1})^{-1}$ . The model predictions are compared with the observed line ratios and line intensities corrected for beam dilution. As discussed in Sect. 3.3, for velocities higher than  $\sim 8 \text{ km s}^{-1}$  with respect to systemic the SO emission is copatial with that of CO 3–2 and SiO 8–7, indicating that SO originate in the collimated molecular jet with no contamination from the surrounding outflow and cloud. Therefore, the SO ratios and intensity are measured in the jet high-velocity range defined as:  $\text{HV}_{\text{jet}} = [-8, -15] \text{ km s}^{-1}$  for knots B3 and B2 and  $\text{HV}_{\text{jet}} = [+10, +15] \text{ km s}^{-1}$  for knot R2. The different velocity range defined for R2 is to avoid the strong absorption feature around  $+9 \text{ km s}^{-1}$  when comparing with the CO 3–2 emission. As discussed by Lee et al. (2007a) and Cabrit et al. (2012), this feature is present at all positions and may be caused by an extended foreground component fully resolved out by interferometers. The SO  $10_{11}-10_{10}$  line is not detected in the jet knots, hence we report the upper limit of the considered SO line ratio. The SO line ratios do not depend on the assumed beam filling factor, as long as both lines trace the same volume of gas. The observed SO  $9_8-8_7$  line intensity,  $T_{\text{mb}}$ , is corrected for beam dilution, as the jet of  $\sim 0.7$  width is broadened by a factor  $\sim 2$  by beam convolution across the jet. The errorbars on the SO line

intensity in Fig. 9 accounts for the range of intensity values over  $\text{HV}_{\text{jet}}$ , and for possible beam dilution along the jet axis (a factor  $\sim 3$  if the knot is circular, see also Cabrit et al. 2007).

Figure 9 shows that the available SO observations do not allow for constraining the density and temperature of the emitting gas. However, for the considered temperatures and  $\text{H}_2$  densities the observations are in agreement with the model predictions for column densities  $N_{\text{SO}}/\Delta V \sim 10^{13}-10^{14} \text{ cm}^{-2} (\text{km s}^{-1})^{-1}$ . For these values of the column density, the emission in the considered SO lines is optically thin.

If the density is sufficiently high, i.e. for  $n_{\text{H}_2}$  larger than a few  $10^6 \text{ cm}^{-3}$ , the emission is also in local thermodynamic equilibrium (LTE). In this case, an estimate of the beam-averaged SO column density in the inner jet knots can be derived from the SO  $9_8-8_7$  line intensity integrated over the high-velocity range  $\text{HV}_{\text{jet}}$  assuming optically thin and thermalised emission at  $T_K \sim T_{\text{ex}} = 50-500$  K. Following Cabrit et al. (2012), the beam-averaged CO column density is also derived from the CO 3–2 intensity integrated on the same velocity range as for SO assuming optically thin, LTE emission. The latter assumption is not valid for knot B2 where the ratio between the CO 3–2 and SiO 8–7 emission is  $\sim 1$  over the  $\text{HV}_{\text{jet}}$  velocity range. This indicates that both lines are optically thick. Therefore, for knot B2 the derived CO column density is a lower limit. Then, the abundance of SO is derived as  $X_{\text{SO}} = X_{\text{CO}} \times N_{\text{SO}}/N_{\text{CO}}$ , where the abundance of CO with respect to  $\text{H}_2$  is assumed to be  $X_{\text{CO}} = N_{\text{CO}}/N_{\text{H}_2} = 10^{-4}$ . The main uncertainty in the estimated column densities and abundances is because of the assumption on the gas temperature, therefore we report a range of values corresponding to the temperature values  $T_K \sim T_{\text{ex}} = 50-500$  K. Moreover, if the density in the jet is lower than a few  $10^6 \text{ cm}^{-3}$ , the SO  $9_8-8_7$  line is sub-thermally excited implying higher SO column densities. In particular, assuming  $n_{\text{H}_2} = 3 \times 10^5 \text{ cm}^{-3}$ , the SO column densities and abundances estimated using RADEX are from a factor 2 (for  $T_K = 500$  K) to a factor 4 (for  $T_K = 50$  K) larger than in the LTE-optically thin case.

The SO<sub>2</sub>  $8_{2,6}-7_{1,7}$  emission is much fainter and covers lower velocities than SO, therefore it is not possible to compare its PV with that of CO 3–2 (see Fig. 2). However, based on the intensity profiles shown in Fig. 4, we tentatively assume that SO<sub>2</sub> and CO 3–2 emission probe the same jet component over the velocity range  $\text{HV}_{\text{jet}} = [-8, -10] \text{ km s}^{-1}$  in knots B3 and B2 and that both are optically thin and thermalised. Based on these assumptions, the column density and abundance of SO<sub>2</sub> are inferred by applying the same method as for SO. The main source of error in the estimated SO<sub>2</sub> column densities and abundances is due to the assumed gas temperature, therefore we report a range of values for  $T_K \sim T_{\text{ex}} = 50-500$  K. As for SO, if the density in the jet is lower than a few  $10^6 \text{ cm}^{-3}$ , the SO<sub>2</sub> line is sub-thermally excited. In that case, using RADEX with  $n_{\text{H}_2} = 3 \times 10^5 \text{ cm}^{-3}$  and  $T_{\text{ex}} = 50-500$  K, we obtain a factor 2 to 4 higher column densities and abundances.

The SO, SO<sub>2</sub>, and CO line intensities integrated over the high-velocity range  $\text{HV}_{\text{jet}}$  in the inner jet knots (B3, B2, and R2) are reported in the last column of Table 2, while the column densities and abundances estimated assuming LTE-optically thin emission are summarised in Table 3. The SO abundance in the high-velocity jet of HH 212 ( $X_{\text{SO}} \sim 10^{-7}-2 \times 10^{-6}$ ) is comparable to that estimated in other Class 0 jets, namely HH 211 (Lee et al. 2010), the extremely high-velocity (EHV) wings of the L1448-mm and IRAS 04166+2706 outflows (Tafalla et al. 2010), and the B1 and B2 bow shocks at the tip of the L1157 outflow cavity (Bachiller & Perez Gutierrez 1997). On the other hand, the ratio SO<sub>2</sub>/SO appears variable from jet to jet: we

**Table 3.** Beam-averaged column densities and abundances of SO, SO<sub>2</sub>, and CO in the jet knots B2, B3, and R2.

Jet knot	HV <sub>jet</sub> (km s <sup>-1</sup> )	N <sub>SO</sub> (10 <sup>14</sup> cm <sup>-2</sup> )	N <sub>CO</sub> (10 <sup>17</sup> cm <sup>-2</sup> )	X <sub>SO</sub> (10 <sup>-7</sup> )	HV <sub>jet</sub> (km s <sup>-1</sup> )	N <sub>SO<sub>2</sub></sub> (10 <sup>15</sup> cm <sup>-2</sup> )	N <sub>CO</sub> (10 <sup>16</sup> cm <sup>-2</sup> )	X <sub>SO<sub>2</sub></sub> (10 <sup>-7</sup> )
B2	[-8, -15]	3.0–7.1	≥0.4–2.1*	≤7.5–3.3*	[-8, -10]	0.1–1.3	≥1.8–10.1*	≤4.7–12.4*
B3	[-8, -15]	2.3–5.6	0.2–1.2	10.5–4.6	[-8, -10]	0.1–1.1	1.6–9.0	4.7–12.4
R2	[+10, +15]	0.4–0.8	0.2–1.1	1.7–0.8	[+8, +10]	0.1–1.3	–	–

**Notes.** The column densities are estimated from the SO 9<sub>8</sub>–8<sub>7</sub>, SO<sub>2</sub> 8<sub>2,6</sub>–7<sub>1,7</sub>, and CO 3–2 line intensities integrated over the indicated high-velocity ranges assuming optically thin thermalised emission at  $T_{\text{ex}} = 50$ –500 K. The abundances of SO and SO<sub>2</sub> are derived as  $X_{\text{specie}} = N_{\text{specie}}/N_{\text{CO}} \times N_{\text{CO}}/N_{\text{H}_2}$  and assuming  $X_{\text{CO}} = N_{\text{CO}}/N_{\text{H}_2} = 10^{-4}$ . (\*) As CO 3–2 is optically thick in knot B2, the estimated CO column density,  $N_{\text{CO}}$ , is a lower limit, and the SO and SO<sub>2</sub> abundances,  $X_{\text{SO}}$  and  $X_{\text{SO}_2}$ , are upper limits.

**Table 4.** Properties of the knots along the HH 212 jet.

Knot	RA ( <sup>''</sup> )	Dec ( <sup>''</sup> )	$d_{\text{tan}}$ ( <sup>''</sup> )	$d$ (AU)	$V$ (km s <sup>-1</sup> )	$\tau_{\text{dyn}}$ (yr)	HV <sub>jet</sub> (km s <sup>-1</sup> )	$N_{\text{H}_2}$ (cm <sup>-2</sup> )	$n_{\text{H}_2}$ (cm <sup>-3</sup> )	$\dot{M}_{\text{jet}}$ ( $M_{\odot}$ yr <sup>-1</sup> )
B2	+0.63	+1.42	+1.55	700	-118	30	[-8, -15]	≥0.4–2.1 × 10 <sup>21</sup> *	≥0.6–3.1 × 10 <sup>6</sup> *	≥0.4–1.9 × 10 <sup>-6</sup> *
B3	+0.25	+0.63	+0.68	300	-92	15	[-8, -15]	0.2–1.2 × 10 <sup>21</sup>	0.3–1.8 × 10 <sup>6</sup>	0.2–1.1 × 10 <sup>-6</sup>
R2	-0.59	-1.30	-1.43	650	+110	30	[+10, +15]	0.2–1.1 × 10 <sup>21</sup>	0.3–1.6 × 10 <sup>6</sup>	0.2–1.0 × 10 <sup>-6</sup>

**Notes.** Position offset (RA and Dec in <sup>''</sup>), on-sky, and de-projected distance from the MM1 protostar ( $d_{\text{tan}}$  in <sup>''</sup> and  $d$  in AU), de-projected peak velocity ( $V$  in km s<sup>-1</sup>), dynamical timescale ( $\tau_{\text{dyn}}$  in yr), high-velocity range on which the jet properties are estimated (HV<sub>jet</sub> in km s<sup>-1</sup>), beam-averaged H<sub>2</sub> column density ( $N_{\text{H}_2}$  in cm<sup>-2</sup>), H<sub>2</sub> volume density ( $n_{\text{H}_2}$  in cm<sup>-3</sup>), and mass-loss rate ( $\dot{M}_{\text{jet}}$  in  $M_{\odot}$  yr<sup>-1</sup>). (\*) As CO 3–2 is optically thick in knot B2, the estimated CO column density,  $N_{\text{CO}}$ , and hence H<sub>2</sub> column and volume density,  $N_{\text{H}_2}$  and  $n_{\text{H}_2}$ , and mass-loss rate,  $\dot{M}_{\text{jet}}$ , are lower limits.

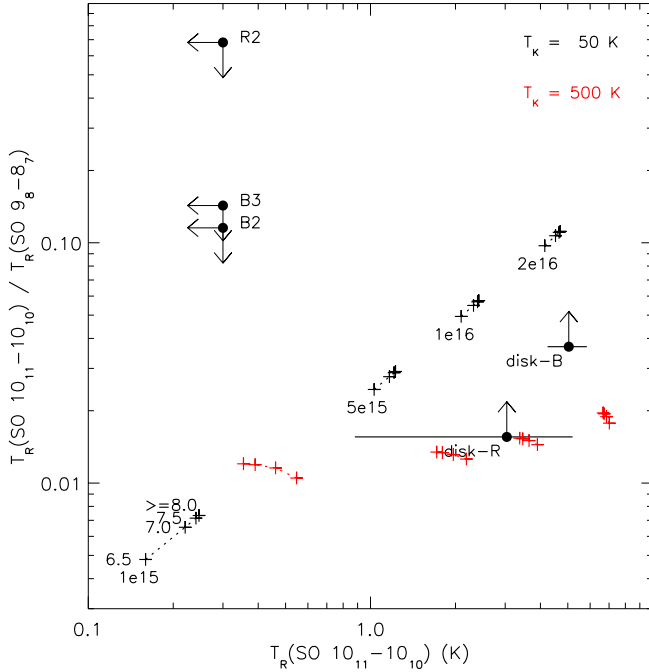
find SO<sub>2</sub>/SO ~ 0.5–4 in HH 212, while it is around 1 in L1157, and <0.1–0.3 in the L1448-mm and IRAS 04166+270 EHV gas.

Assuming a sulfur elemental abundance (S/H)<sub>⊙</sub> ~ 1.38 × 10<sup>-5</sup> (Asplund et al. 2005), these values indicate that from 1% up to 40% of the elemental S is in the form of SO and SO<sub>2</sub> in the HH 212 jet. This represents an enhancement by a factor 10–100 with respect to SO and SO<sub>2</sub> abundances in prestellar cores and protostellar envelopes (Bachiller & Perez Gutierrez 1997; Tafalla et al. 2010).

An enhancement of SO and SO<sub>2</sub> up to ≈10<sup>-7</sup>–10<sup>-6</sup> is predicted by models of magnetised molecular C-shocks, as a result of neutral-neutral reactions in the shock-heated gas (Pineau des Forets et al. 1993) and sputtering of H<sub>2</sub>S-rich icy grain mantles (Flower & Pineau des Forets 1994). The formation of SO<sub>2</sub> by oxydation of SO is predicted to occur late in the post-shock, hence the ratio of SO<sub>2</sub>/SO would be an indicator of shock age (see e.g. Fig. 7 of Flower & Pineau des Forets 1994). In the case of HH 212, the ratio SO<sub>2</sub>/SO ≥ 0.5 that we observe seems inconsistent with the very short dynamical timescale of 15–30 yr of the knots. This high ratio at early times would require that SO<sub>2</sub> is mainly released from grain mantles rather than formed in the gas phase out of SO as assumed in published shock models. Observations of other sulfur-bearing species, such as CS, OCS, H<sub>2</sub>S, H<sub>2</sub>CS, are crucial to constrain the sulfur chemistry and obtain an accurate estimate of the sulphur released in the gas phase in shocks (e.g. Podio et al. 2014). Alternatively to shocks, high SO and SO<sub>2</sub> abundances up to 10<sup>-6</sup> are predicted at the turbulent interface between the outflow and the surrounding cloud material (Viti et al. 2002). SO and SO<sub>2</sub> is also strongly enhanced in an MHD disk wind because of the thermal sublimation of icy mantles near the source and the gradual heating by ambipolar diffusion during MHD acceleration (Panoglou et al. 2012). Detailed comparison with the models will be the subject of a future paper (Tabone et al., in prep.).

#### 4.3. Jet physical and dynamical properties: H<sub>2</sub> density and mass-loss rate

From the beam-averaged CO column density estimated in the HV<sub>jet</sub> range,  $N_{\text{CO}}$  (see Table 3), one can infer the H<sub>2</sub> column and volume density in the knots along the jet,  $N_{\text{H}_2}$  and  $n_{\text{H}_2}$ , and the jet mass-loss rate,  $\dot{M}_{\text{jet}}$ . The determination of these quantities relies on the assumption that CO 3–2 emission at high velocity is optically thin and traces all the emitting mass in the beam. As CO 3–2 in knot B2 is optically thick, the  $N_{\text{H}_2}$ ,  $n_{\text{H}_2}$ , and  $\dot{M}_{\text{jet}}$  values inferred for this knot are lower limits. First, the beam-averaged H<sub>2</sub> column density is derived assuming  $X_{\text{CO}} = N_{\text{CO}}/N_{\text{H}_2} = 10^{-4}$ . Then, the H<sub>2</sub> density is derived assuming that the jet is a cylinder uniformly filled by the observed gas. Hence,  $n_{\text{H}_2} = (\text{HPBW}_{\text{tr}}/2R_{\text{jet}}) \times N_{\text{H}_2}/2R_{\text{jet}}$ , where  $2R_{\text{jet}}$  is the jet width (~90 AU) and the factor  $(\text{HPBW}_{\text{tr}}/2R_{\text{jet}})$  accounts for the beam dilution of the ~90 AU jet emission in the transverse beam direction. Finally, the mass-loss rate is estimated assuming that the mass in the jet flows at constant density and speed along the jet axis over the beam length. The latter assumption is not fulfilled if the gas in the knots is highly compressed by shocks, therefore following Lee et al. (2007a,b), we correct the mass-loss rate for a compression factor of ~3. Based on the above assumptions,  $\dot{M}_{\text{jet}}$  is calculated as  $\dot{M}_{\text{jet}} = 1/3 \times m_{\text{H}_2} \times (N_{\text{CO}}/X_{\text{CO}}) \times \text{HPBW}_{\text{tr}} \times V_{\text{jet}}$ , where  $V_{\text{jet}}$  is the de-projected jet velocity in the considered HV<sub>jet</sub> range ( $V_{\text{jet}} \sim 165$  km s<sup>-1</sup>) and  $\text{HPBW}_{\text{tr}}$  is the beam size across the jet width ( $\text{HPBW}_{\text{tr}} = 0'.47$ ). Note that the correction for compression is uncertain, as it depends on the unknown shock parameters (magnetic field and shock speed), therefore the  $\dot{M}_{\text{jet}}$  values are affected by a factor ~3 uncertainty. Moreover, the estimated mass-loss rate only accounts for the mass transported by the molecular jet component at high velocity ( $|V - V_{\text{sys}}| > 8$  km s<sup>-1</sup>). The total jet mass-loss rate may be up to a factor of a few higher



**Fig. 10.** SO line temperature ratio  $T_R(\text{SO } 10_{11}-10_{10})/T_R(\text{SO } 9_8-8_7)$  versus intrinsic line temperature  $T_R(\text{SO } 10_{11}-10_{10})$  predicted by RADEX slab models at  $T_K = 50, 500$  K (black and red points/curves). Each curve corresponds to the labelled column density  $N_{\text{SO}}/\Delta V$  increasing from  $10^{15}$  to  $2 \times 10^{16} \text{ cm}^{-2} (\text{km s}^{-1})^{-1}$  going from left to right. Each dot along the curves corresponds to the labelled  $\log(n_{\text{H}_2})$  (from  $10^{6.5}$  to  $\geq 10^8 \text{ cm}^{-3}$ ). Models for which the emission in the SO  $10_{11}-10_{10}$  is optically thin are marked with a cross, optically thick models with a star. The black points indicate the SO line ratio and the SO  $10_{11}-10_{10}$  line intensity (or their lower/upper limits) corrected for beam dilution in the B2, B3 and R2 knots and in the disk blue and red lobes.

than the estimated value as the low velocity component can considerably contribute to the total mass-loss rate if it traces a slow wide angle wind rather than entrained ambient material (see, e.g. Maurri et al. 2014). If the jet is partially ionised, the atomic gas may further contribute to the mass-loss rate. However, *Spitzer* and *Herschel* observations of molecular jets driven by Class 0 sources indicate that the mass flux transported by the atomic component is about 10 times smaller than that carried by the molecular gas (Dionatos et al. 2009, 2010; Nisini et al. 2015). Hence, the atomic component of HH 212, if any, should not significantly contribute to the total jet mass-loss rate.

The inferred values of  $N_{\text{H}_2}$ ,  $n_{\text{H}_2}$ , and  $\dot{M}_{\text{jet}}$  for the B2, B3, and R2 knots are summarised in Table 4. These quantities are affected by the uncertainty in the  $N_{\text{CO}}$  estimates, hence a range of values is given depending on the temperature assumed to derive  $N_{\text{CO}}$  ( $T_{\text{ex}} = 50, 500$  K). As explained above, the  $\dot{M}_{\text{jet}}$  values inferred for the molecular high-velocity jet component are a lower limit to the total jet mass-loss rate. Therefore, the mass flux transported by the jet ( $\dot{M}_{\text{jet}} \geq 0.2-2 \times 10^{-6} M_{\odot} \text{ yr}^{-1}$ ) is at least 3% to 33% of the envelope infall rate ( $\dot{M}_{\text{inf}} \sim 6 \times 10^{-6} M_{\odot} \text{ yr}^{-1}$ , Lee et al. 2006), indicating a high jet efficiency ( $\dot{M}_{\text{jet}}/\dot{M}_{\text{inf}} \geq 0.03-0.3$ ), in agreement with the young age of the source. The mass accretion rate from the disk onto the central source may be higher than the envelope infall rate. However, there are no estimates of the disk mass accretion rate for HH 212 as Class 0 sources like this one are too deeply embedded in their parental envelope to enable the use of well-calibrated accretion tracers such as, e.g., the Bry line.

**Table 5.** Beam-averaged column densities and abundances of SO and C<sup>17</sup>O in the disk.

Disk lobe	HV <sub>disk</sub> (km s <sup>-1</sup> )	$N_{\text{SO}}$ (10 <sup>15</sup> cm <sup>-2</sup> )	$N_{\text{C}^{17}\text{O}}$ (10 <sup>16</sup> cm <sup>-2</sup> )	$X_{\text{SO}}$ (10 <sup>-7</sup> )
blue	[-1.9, -3.5]	6.0–4.6	0.2–1.3	1.4–0.2
red	[+1.9, +3.5]	3.4–2.6	0.2–0.9	1.2–0.2

**Notes.** The column densities are derived by integrating the line intensity of SO  $10_{11}-10_{10}$  and C<sup>17</sup>O 3–2 over the velocity range defined by Codella et al. (2014a; HV<sub>disk</sub>:  $|V - V_{\text{sys}}| = 1.9-3.5 \text{ km s}^{-1}$ ). We assume optically thin emission at LTE with  $T_{\text{ex}} = 50-500$  K. The abundance of SO is derived as  $X_{\text{specie}} = N_{\text{specie}}/N_{\text{C}^{17}\text{O}} \times N_{\text{C}^{17}\text{O}}/N_{\text{CO}} \times N_{\text{CO}}/N_{\text{H}_2}$  and assuming  $N_{\text{C}^{17}\text{O}}/N_{\text{CO}} = 1/1792$  and  $X_{\text{CO}} = N_{\text{CO}}/N_{\text{H}_2} = 10^{-4}$  (Wilson & Rood 1994).

#### 4.4. Disk properties: mass and SO abundance

An analysis similar to that performed in Sect. 4.2 is applied to constrain the gas physical conditions and the SO abundance in the disk. The observed SO  $10_{11}-10_{10}$  line intensity and the SO  $10_{11}-10_{10}/\text{SO } 9_8-8_7$  ratio in the blue and red disk lobes (HV<sub>disk</sub>:  $|V - V_{\text{sys}}| = 1.9-3.5 \text{ km s}^{-1}$ , Codella et al. 2014a) are compared with the predictions of RADEX computed for  $T_K = 50-500$  K, H<sub>2</sub> densities larger than  $3 \times 10^6 \text{ cm}^{-3}$  and SO column densities  $N_{\text{SO}}/\Delta V = 10^{15}, 5 \times 10^{15}, 10^{16}, 2 \times 10^{16} \text{ cm}^{-2} (\text{km s}^{-1})^{-1}$ . The observed SO  $10_{11}-10_{10}$  line intensity,  $T_{\text{mb}}$ , is corrected for beam dilution, as the emission from the compact disk lobes ( $R_{\text{disk}} \sim 90$  AU, i.e.  $0''.2$ ) is strongly diluted in the  $0''.65 \times 0''.47$  beam (dilution factor  $\sim 8$ ). The SO  $9_8-8_7$  emission at low velocities is heavily dominated by the outflow emission, hence the observed SO  $10_{11}-10_{10}/\text{SO } 9_8-8_7$  ratio is a lower limit to the SO line ratio in the disk. Figure 10 shows that, to reproduce the bright SO  $10_{11}-10_{10}$  emission, column densities of  $N_{\text{SO}}/\Delta V \sim 1-2 \times 10^{16} \text{ cm}^{-2} (\text{km s}^{-1})^{-1}$  are required, i.e. two orders of magnitude larger than what estimated in the jet ( $N_{\text{SO}}/\Delta V \sim 10^{14}$ ). In the considered models, the emission in the SO  $9_8-8_7$  line is optically thick (see also Fig. 9), while the emission in the SO  $10_{11}-10_{10}$  line is still optically thin. Moreover, volume densities are expected to be larger than  $10^7 \text{ cm}^{-3}$  in the disk (Lee et al. 2014), therefore we can assume that the line emission is thermalised.

As the emission in the SO  $10_{11}-10_{10}$  is optically thin and thermalised, we estimate the SO column density in the disk by integrating the SO  $10_{11}-10_{10}$  line intensity on the velocity interval where the emission is consistent with a disk origin, HV<sub>disk</sub>, and assuming  $T_K \sim T_{\text{ex}} = 50-500$  K. Given its low abundance ( $X_{\text{C}^{17}\text{O}} = X_{\text{CO}}/1792$ , Wilson & Rood 1994) and critical density the emission in the C<sup>17</sup>O 3–2 line is also assumed to be optically thin and thermalised at  $T_K \sim T_{\text{ex}} = 50-500$  K and the C<sup>17</sup>O column density is inferred from the C<sup>17</sup>O 3–2 line intensity integrated on HV<sub>disk</sub> as for SO. The SO  $10_{11}-10_{10}$  and C<sup>17</sup>O 3–2 line intensity integrated on HV<sub>disk</sub> are reported in the last column of Table 2, while the estimated beam-averaged SO and C<sup>17</sup>O column densities are summarised in Table 5.

From the beam-averaged C<sup>17</sup>O column density,  $N_{\text{C}^{17}\text{O}}$ , we estimate the H<sub>2</sub> column and volume density in the disk and its mass. The beam-averaged H<sub>2</sub> column density is derived assuming  $X_{\text{C}^{17}\text{O}} = X_{\text{CO}}/1792$  and  $X_{\text{CO}} = N_{\text{CO}}/N_{\text{H}_2} = 10^{-4}$ . Then, as the disk is seen almost edge-on, the H<sub>2</sub> density is  $8 \times N_{\text{H}_2}/R_{\text{disk}}$ , where  $R_{\text{disk}} \sim 90$  AU and the factor 8 accounts for the beam dilution. Finally, the disk mass is obtained by integrating the beam-averaged C<sup>17</sup>O column density over the beam

area,  $A_{\text{beam}}$ , and summing over the blue and red disk lobes:  $M_{\text{disk}} \sim (1.4 \times m_{\text{H}_2} \times (N_{\text{C}^{17}\text{O}}/X_{\text{C}^{17}\text{O}}) \times A_{\text{beam}})_{\text{blue} + \text{red}}$ , where the factor 1.4 accounts for the mass in the form of helium.

Depending on the adopted temperature value, the estimated beam-averaged  $\text{H}_2$  column density and  $\text{H}_2$  volume density in the disk are  $N_{\text{H}_2} \sim 0.4\text{--}2 \times 10^{23} \text{ cm}^{-2}$  and  $n_{\text{H}_2} \sim 0.2\text{--}1 \times 10^9 \text{ cm}^{-3}$ , where the lower and higher values correspond to  $T_{\text{ex}} = 50, 500 \text{ K}$ , respectively. The disk mass turns out to be  $\sim 0.002\text{--}0.013 M_{\odot}$ . This value is close to the disk mass of  $0.014 M_{\odot}$  estimated by Lee et al. (2014) from  $\text{HCO}^+$  4–3. Hence, if  $\text{C}^{17}\text{O}$  is tracing the same disk layer as  $\text{HCO}^+$ , it is indeed optically thin and all in the gas phase in this region. More mass could be hidden in the dark disk mid-plane where molecules are frozen onto dust grains, so our estimate is only a lower limit to the total disk mass, i.e.  $M_{\text{disk}} \geq 0.002\text{--}0.013 M_{\odot}$ .

Finally, we estimate the SO gas-phase abundance in the disk by assuming that SO 10<sub>11</sub>–10<sub>10</sub> and  $\text{C}^{17}\text{O}$  3–2 originate from the same disk layer in the  $1.9\text{--}3.5 \text{ km s}^{-1}$  velocity range and that  $\text{C}^{17}\text{O}$  is all in the gas phase in the considered disk-emitting region. Based on the above assumptions  $X_{\text{SO}} = X_{\text{C}^{17}\text{O}} \times N_{\text{SO}}/N_{\text{C}^{17}\text{O}} \sim 10^{-8}\text{--}10^{-7}$ . This estimate would remain correct even if  $\text{C}^{17}\text{O}$  is depleted onto grains, as long as SO and  $\text{C}^{17}\text{O}$  are depleted by the same amount (and both optically thin). The estimated SO column density and abundance are much higher than that observed in evolved protoplanetary disks ( $N_{\text{SO}} \leq 10^{13} \text{ cm}^{-2}$ ,  $X_{\text{SO}} \leq 10^{-11}$ , Fuente et al. 2010; Dutrey et al. 2011) and may be due to an SO enhancement in the accretion shock at the envelope-disk interface as suggested by Lee et al. (2014) and Sakai et al. (2014). Alternatively, an high SO abundance (up to  $10^{-6}$ ) is predicted by self-gravitating disk models because of the shocks occurring in the disk spirals caused by gravitational instabilities (Ilee et al. 2011; Douglas et al. 2013). Since the central star has a mass of only  $0.2\text{--}0.3 M_{\odot}$  (Lee et al. 2014; Codella et al. 2014a), and our estimates of the disk mass do not include the mass reservoir frozen onto grains, this scenario is not excluded. However, the presented ALMA observations do not allow us to distinguish between these scenarios. The angular resolution ( $\sim 0''.5$ ) is too low to fully resolve the disk, therefore, the SO 10<sub>11</sub>–10<sub>10</sub> line profile is averaged over a large portion of the disk impeding to detect SO enhancements as a function of velocity. Moreover, an edge-on view is not favourable to search for SO enhancements in a gravitationally unstable disk, as each line of sight would cross many spiral arms. This scenario could however be tested for less inclined Class 0 disks with higher resolution ALMA observations.

## 5. Conclusions

HH 12 is the prototype of the Class 0 jet and it has been the subject of a number of high angular resolution studies at mm wavelengths performed with the SMA and the PdBI (Lee et al. 2006, 2007a, 2008; Codella et al. 2007; Cabrit et al. 2007, 2012). The high sensitivity of the ALMA Cycle 0 observations allow us for the first time to simultaneously image the envelope, the outflow, the jet, and the inner compact disk (see also Lee et al. 2014; Codella et al. 2014a). In particular, the presented analysis of SO and  $\text{SO}_2$  emission show that these molecules probe different components in the inner  $\sim 1300 \text{ AU}$  of the HH 12 protostellar system: (i) the circumstellar gas and the X-shaped cavity walls at systemic velocity; (ii) the poorly collimated gas (width  $\sim 135 \text{ AU}$ ) likely swept out by the high-velocity molecular jet at low velocities; (iii) the collimated ( $\sim 90 \text{ AU}$ ) and fast ( $\sim 100\text{--}200 \text{ km s}^{-1}$ ) molecular jet at intermediate and high velocities; (iv) a compact structure with the

blue- and the red-shifted peaks displaced roughly on the equatorial plane, which is consistent with an origin in the 90 AU disk rotating around a  $\sim 0.2\text{--}0.3 M_{\odot}$  star previously detected by Lee et al. (2014) and Codella et al. (2014a), in the high-excitation SO 10<sub>11</sub>–10<sub>10</sub> line.

The high-velocity molecular jet detected in SO,  $\text{SO}_2$ , CO, and SiO lines is dense ( $\sim 10^5\text{--}10^6 \text{ cm}^{-3}$ ) and transport a mass-loss rate  $\dot{M}_{\text{jet}} \geq 0.2\text{--}2 \times 10^{-6} M_{\odot} \text{ yr}^{-1}$ , indicating a high ejection efficiency ( $\dot{M}_{\text{jet}}/\dot{M}_{\text{inf}} \geq 0.03\text{--}0.3$ , for an infall rate of  $\sim 6 \times 10^{-6} M_{\odot} \text{ yr}^{-1}$ , Lee et al. 2006). The abundance of SO in the jet is  $X_{\text{SO}} \sim 10^{-7}\text{--}10^{-6}$ , similar to what is estimated in other Class 0 outflows and jets (e.g. Bachiller & Perez Gutierrez 1997; Tafalla et al. 2010; Lee et al. 2010), while  $X_{\text{SO}_2}/X_{\text{SO}} \geq 0.5$ . This indicates that between 1% and 40% of the elemental S has been converted into SO and  $\text{SO}_2$  in the shocks occurring along the jet or at the outflow-cloud interface (Pineau des Forets et al. 1993; Flower & Pineau des Forets 1994; Viti et al. 2002) and/or at the base of the wind because of ambipolar diffusion (Panoglou et al. 2012).

From  $\text{C}^{17}\text{O}$  3–2 emission we estimate a disk mass  $\geq 0.002\text{--}0.013 M_{\odot}$ , which is consistent with the estimate derived from  $\text{HCO}^+$  by Lee et al. (2014). The SO abundance in the disk ( $X_{\text{SO}} \sim 10^{-8}\text{--}10^{-7}$ ) is 3–4 orders of magnitude larger than is estimated in evolved protoplanetary disks (Fuente et al. 2010; Dutrey et al. 2011). This kind of an SO enhancement may be produced in the accretion shock occurring at the interface between the envelope and the disk, as suggested by Lee et al. (2014) and Sakai et al. (2014), or in spiral shocks if the disk is partly gravitationally unstable (Ilee et al. 2011; Douglas et al. 2013). Higher angular resolution and sensitivity observations are required to address the exact origin of the detected high-excitation SO emission.

*Acknowledgements.* L.P. has received funding from the European Union Seventh Framework Programme (FP7/2007–2013) under grant agreement No. 267251. This work was partly supported by the Italian Ministero dell’Istruzione, Università e Ricerca (MIUR) through the grants Progetti Premiali 2012 – iALMA (CUP C52113000140001) and PRIN 2013 – JEDI. R.B. and M.T. gratefully acknowledge partial support from Spanish MINECO under Grant FIS2012-32096.

## References

- Asplund, M., Grevesse, N., & Sauval, A. J. 2005, in *Cosmic Abundances as Records of Stellar Evolution and Nucleosynthesis*, ed. T. G. Barnes, III, & F. N. Bash, *ASP Conf. Ser.*, **336**, 25
- Bacciotti, F., Ray, T. P., Mundt, R., Eisloffel, J., & Solf, J. 2002, *ApJ*, **576**, 222
- Bachiller, R., & Perez Gutierrez, M. 1997, *ApJ*, **487**, L93
- Cabrit, S., Codella, C., Gueth, F., et al. 2007, *A&A*, **468**, L29
- Cabrit, S., Codella, C., Gueth, F., & Gusdorf, A. 2012, *A&A*, **548**, L2
- Choi, M., Tatematsu, K., & Kang, M. 2010, *ApJ*, **723**, L34
- Ciardi, A., & Hennebelle, P. 2010, *MNRAS*, **409**, L39
- Claussen, M. J., Marvel, K. B., Wootten, A., & Wilking, B. A. 1998, *ApJ*, **507**, L79
- Codella, C., Cabrit, S., Gueth, F., et al. 2007, *A&A*, **462**, L53
- Codella, C., Cabrit, S., Gueth, F., et al. 2014a, *A&A*, **568**, L5
- Codella, C., Maury, A. J., Gueth, F., et al. 2014b, *A&A*, **563**, L3
- Coffey, D., Bacciotti, F., Woitas, J., Ray, T. P., & Eisloffel, J. 2004, *ApJ*, **604**, 758
- Correia, S., Zinnecker, H., Ridgway, S. T., & McCaughrean, M. J. 2009, *A&A*, **505**, 673
- Davis, C. J., Berndsen, A., Smith, M. D., Chrysostomou, A., & Hobson, J. 2000, *MNRAS*, **314**, 241
- Dionatos, O., Nisini, B., Garcia Lopez, R., et al. 2009, *ApJ*, **692**, 1
- Dionatos, O., Nisini, B., Cabrit, S., Kristensen, L., & Pineau Des Forêts, G. 2010, *A&A*, **521**, A7
- Douglas, T. A., Caselli, P., Ilee, J. D., et al. 2013, *MNRAS*, **433**, 2064
- Dutrey, A., Wakelam, V., Boehler, Y., et al. 2011, *A&A*, **535**, A104
- Ferreira, J., Dougados, C., & Cabrit, S. 2006, *A&A*, **453**, 785

- Flower, D. R., & Pineau des Forets, G. 1994, *MNRAS*, 268, 724
- Fuente, A., Cernicharo, J., Agúndez, M., et al. 2010, *A&A*, 524, A19
- Guilloteau, S., Di Folco, E., Dutrey, A., et al. 2013, *A&A*, 549, A92
- Ilee, J. D., Boley, A. C., Caselli, P., et al. 2011, *MNRAS*, 417, 2950
- Kwan, J., & Tadamaru, E. 1988, *ApJ*, 332, L41
- Launhardt, R., Pavlyuchenkov, Y., Gueth, F., et al. 2009, *A&A*, 494, 147
- Lee, C.-F., Ho, P. T. P., Beuther, H., et al. 2006, *ApJ*, 639, 292
- Lee, C.-F., Ho, P. T. P., Hirano, N., et al. 2007a, *ApJ*, 659, 499
- Lee, C.-F., Ho, P. T. P., Palau, A., et al. 2007b, *ApJ*, 670, 1188
- Lee, C.-F., Ho, P. T. P., Bourke, T. L., et al. 2008, *ApJ*, 685, 1026
- Lee, C.-F., Hirano, N., Palau, A., et al. 2009, *ApJ*, 699, 1584
- Lee, C.-F., Hasegawa, T. I., Hirano, N., et al. 2010, *ApJ*, 713, 731
- Lee, C.-F., Hirano, N., Zhang, Q., et al. 2014, *ApJ*, 786, 114
- Maurri, L., Bacciotti, F., Podio, L., et al. 2014, *A&A*, 565, A110
- Maury, A. J., Belloche, A., André, P., et al. 2014, *A&A*, 563, L2
- Murillo, N. M., Lai, S.-P., Bruderer, S., Harsono, D., & van Dishoeck, E. F. 2013, *A&A*, 560, A103
- Nisini, B., Santangelo, G., Giannini, T., et al. 2015, *ApJ*, 801, 121
- Panoglou, D., Cabrit, S., Pineau Des Forêts, G., et al. 2012, *A&A*, 538, A2
- Pickett, H. M., Poynter, R. L., Cohen, E. A., et al. 1998, *J. Quant. Spectr. Rad.*, 60, 883
- Pineau des Forets, G., Roueff, E., Schilke, P., & Flower, D. R. 1993, *MNRAS*, 262, 915
- Podio, L., Lefloch, B., Ceccarelli, C., Codella, C., & Bachiller, R. 2014, *A&A*, 565, A64
- Sakai, N., Sakai, T., Hirota, T., et al. 2014, *Nature*, 507, 78
- Tafalla, M., Santiago-García, J., Hacar, A., & Bachiller, R. 2010, *A&A*, 522, A91
- Tobin, J. J., Hartmann, L., Chiang, H.-F., et al. 2012, *Nature*, 492, 83
- van der Tak, F. F. S., Black, J. H., Schöier, F. L., Jansen, D. J., & van Dishoeck, E. F. 2007, *A&A*, 468, 627
- Viti, S., Natarajan, S., & Williams, D. A. 2002, *MNRAS*, 336, 797
- Wilson, T. L., & Rood, R. 1994, *ARA&A*, 32, 191
- Wiseman, J., Wootten, A., Zinnecker, H., & McCaughrean, M. 2001, *ApJ*, 550, L87
- Zinnecker, H., McCaughrean, M. J., & Rayner, J. T. 1998, *Nature*, 394, 862