



<b>Publication Year</b>	2019
<b>Acceptance in OA</b>	2020-11-30T11:05:40Z
<b>Title</b>	Optical spectroscopic observations of gamma-ray blazar candidates VIII: the 2016-2017 follow up campaign carried out at SPM, NOT, KPNO and SOAR telescopes
<b>Authors</b>	Marchesini, E. J., Peña-Herazo, H. A., Álvarez Crespo, N., Ricci, F., Negro, M., Milisavljevic, D., Massaro, F., MASETTI, NICOLA, LANDONI, Marco, Chavushyan, V., D'Abrusco, R., Jiménez-Bailón, E., La Franca, F., PAGGI, Alessandro, Smith, H. A., Tosti, G.
<b>Publisher's version (DOI)</b>	10.1007/s10509-018-3490-z
<b>Handle</b>	<a href="http://hdl.handle.net/20.500.12386/28589">http://hdl.handle.net/20.500.12386/28589</a>
<b>Journal</b>	ASTROPHYSICS AND SPACE SCIENCE
<b>Volume</b>	364

---

# Optical Spectroscopic Observations of Gamma-Ray Blazar Candidates VIII: The 2016-2017 follow up campaign carried out at SPM, NOT, KPNO and SOAR telescopes.

Marchesini, E. J.<sup>1,2,3,4,5</sup> • Peña-Herazo, H. A.<sup>3,4,6</sup>  
 • Álvarez Crespo, N.<sup>3,4</sup> • Ricci, F.<sup>7,8,9</sup> •  
 Negro, M.<sup>3,4,10</sup> • Milisavljevic, D.<sup>11</sup> •  
 Massaro, F.<sup>3,4,10</sup> • Masetti, N.<sup>5,12</sup> • Landoni, M.<sup>13</sup>  
 • Chavushyan, V.<sup>6</sup> • D’Abrusco, R.<sup>7</sup> •  
 Jiménez-Bailón, E.<sup>14</sup> • La Franca, F.<sup>8</sup> •  
 Paggi, A.<sup>3,4,10</sup> • Smith, H. A.<sup>7</sup> • Tosti, G.<sup>15</sup>

---

Marchesini, E. J.

Peña-Herazo, H. A.

Álvarez Crespo, N.

Ricci, F.

Negro, M.

Milisavljevic, D.

Massaro, F.

Masetti, N.

Landoni, M.

Chavushyan, V.

D’Abrusco, R.

Jiménez-Bailón, E.

La Franca, F.

Paggi, A.

Smith, H. A.

Tosti, G.

<sup>1</sup>Facultad de Ciencias Astronómicas y Geofísicas, Universidad Nacional de La Plata, La Plata, Argentina.

<sup>2</sup>Instituto de Astrofísica de La Plata, CONICET-UNLP, CCT La Plata, La Plata, Argentina.

<sup>3</sup>Dipartimento di Fisica, Università degli Studi di Torino, Torino, Italy.

<sup>4</sup>INFN - Istituto Nazionale di Fisica Nucleare, Sezione di Torino, Torino, Italy.

<sup>5</sup>INAF - Osservatorio di Astrofisica e Scienza dello Spazio di Bologna, Bologna, Italy.

<sup>6</sup>Instituto Nacional de Astrofísica, Óptica y Electrónica, Puebla, Mexico.

<sup>7</sup>Harvard - Smithsonian Center for Astrophysics, Cambridge, MA, USA.

<sup>8</sup>Dipartimento di Matematica e Fisica, Università Roma Tre, Roma, Italy.

<sup>9</sup>Instituto de Astrofísica and Centro de Astroingeniería, Facultad de Física, Pontificia Universidad Católica de Chile, Casilla 306, Santiago 22, Chile.

<sup>10</sup>INAF - Osservatorio Astrofisico di Torino, Pino Torinese, Italy.

<sup>11</sup>Department of Physics and Astronomy, Purdue University, West Lafayette, IN, USA.

<sup>12</sup>Departamento de Ciencias Físicas, Universidad Andrés Bello, Santiago, Chile.

**Abstract** The third *Fermi* source catalog lists 3033  $\gamma$ -ray sources above  $4\sigma$  significance. More than 30% are classified as either unidentified/unassociated Gamma-ray sources (UGSs), with about 20% classified as Blazar candidates of uncertain types (BCUs). To confirm the blazar-like nature of candidate counterparts of UGSs and BCUs, we started in 2012 an optical spectroscopic follow up campaign. We report here the spectra of 36 targets with observations from the Observatorio Astronómico Nacional San Pedro Mártir, the Southern Astrophysical Research Observatory, the Kitt Peak National Observatory and the Northern Optical Telescope, between 2016 and 2017. We confirm the BL Lac nature of 23 sources, and the flat spectrum radio quasar nature of other 7 ones. We also provide redshift estimates for 19 out of these 30 confirmations, with only one being a lower limit due to spectral features ascribable to intervening systems along the line of sight. As in previous analyses, the largest fraction of now-classified BCUs belong to the class of BL Lac objects, that appear to be the most elusive class of active galactic nuclei. One of the BL Lacs identified in this work, associated with 3FGL J2213.6-4755, lies at a redshift of  $z > 1.529$ , making it one of the few distant gamma-ray BL Lac objects.

**Keywords** galaxies: active - galaxies: BL Lacertae objects - quasars: general

## 1 Introduction

We are currently living in a golden age for gamma-ray astronomy. Thanks to the discoveries performed with

---

<sup>13</sup>INAF - Osservatorio Astronomico di Brera, Merate, Italy.

<sup>14</sup>Instituto de Astronomía, Universidad Nacional Autónoma de México, Baja California, Mexico.

<sup>15</sup>Dipartimento di Fisica, Università degli Studi di Perugia, Perugia, Italy.

the Large Area Telescope (LAT) (see e.g., Massaro et al. 2016a for a recent review on the extragalactic gamma-ray sky), on board the *Fermi* Gamma-ray Space Telescope (Atwood et al. 2009) launched in 2008, the number of gamma-ray sources is continuously increasing. There are 1450 gamma-ray objects listed in the *Fermi*-LAT First Source Catalog (1FGL; Abdo et al. 2010) and more than 3000 included in the last release of the *Fermi*-LAT Third Source Catalog (3FGL; Acero et al. 2015).

However, one of the key scientific questions identified before the launch of *Fermi* is still unsolved: a significant fraction of the objects detected by *Fermi* ranging between 30% to 40%, still constitute the population of the unidentified/unassociated gamma-ray sources (UGSs) lacking a classified, low-energy counterpart (see e.g., Hartman et al. 1999; Pittori et al. 2009). The search for UGS counterparts at lower frequencies is a challenging task (see e.g., Peña-Herazo et al. 2017, and references therein), mostly due to the *Fermi*-LAT positional uncertainty that is at least an order of magnitude larger than that in the radio-infrared-optical and even soft X-ray band (Massaro et al. 2012a; Massaro et al. 2013a). This prevents us from using standard procedures for positional crossmatches, making it necessary to use multifrequency information (see e.g., Cowperthwaite et al. 2013; Massaro et al. 2013b; Maselli et al. 2015) and associated statistical analyses.

Blazars are among the most extreme classes of radio-loud active galactic nuclei (AGN) whose observational properties and emission at all wavelengths are generally interpreted as due to particles accelerated in a relativistic jet aligned, within a small angle, to our line of sight (Blandford & Rees 1978). Blazars emit via non-thermal processes over the entire electromagnetic spectrum, from radio to  $\gamma$  rays (e.g., Urry & Padovani 1995). They exhibit a broad, double-bump spectral energy distribution (SED) coupled with highly variable (i.e., days to minute time scales) and polarized emission (Andruchow et al. 2005; Angelakis et al. 2016), apparent superluminal motions (Jorstad et al. 2001), flat radio spectra, even at low radio frequencies (see e.g. Massaro et al. 2013c) and peculiar infrared colors (Massaro et al. 2011; D’Abrusco et al. 2012; Massaro & D’Abrusco 2016) discovered thanks to the all-sky survey carried out with the *WISE* satellite (Wright et al. 2010).

Blazars are mainly classified as BL Lac objects, from the name of the prototype, when the equivalent width (EqW) of the emission and/or absorption lines present in their optical spectra is less than 5 Å (Stickel et al. 1991), while they are known as flat spectrum radio quasars when broad emission lines typical of quasar-like (QSO) spectra are visible. The faintness

of spectral features, if present at all, in BL Lac objects is the reason why the determination of their redshifts is challenging (Landoni et al. 2015b; Paiano et al. 2017a; Paiano et al. 2017b).

There are several methods developed to properly assess the blazar nature of a  $\gamma$ -ray source and/or to search for its potential low-energy counterpart, as those based on radio (Ghirlanda et al. 2010; Giroletti et al. 2016), infrared (D’Abrusco et al. 2013), optical (Sandrinelli et al. 2013; Marchesini et al. 2016; Paiano et al. 2017c), optical polarization (Blinov et al. 2018), X-ray follow up observations (Stephen et al. 2010; Takahashi et al. 2012; Takeuchi et al. 2013; Paggi et al. 2013; Landi et al. 2015), a broader multiwavelength approach (Paiano et al. 2017), or machine learning algorithms (Doert & Errando 2014). Unfortunately to get a conclusive answer on the nature of the low-energy counterpart associated with a *Fermi* source, optical spectroscopic observations are strictly necessary (Massaro et al. 2015a). This is also the case of those sources listed in the *Fermi* AGN catalogs (1LAC, 2LAC and 3LAC Abdo et al. 2010; Ackermann et al. 2011; Ackermann et al. 2015) known as blazar candidate of uncertain type (BCUs).

BCUs are radio, infrared or X-ray sources associated with a *Fermi* source on the basis of the statistical procedures developed in the *Fermi* catalogs (Ackermann et al. 2015). If there is a positional correlation between a gamma-ray source and a lower energy candidate counterpart, which is in turn either an unclassified blazar, or an unidentified source with a typical two-humped blazar-like spectral energy distribution, then this candidate counterpart is classified as a BCU. In particular, this means that these potential counterparts of  $\gamma$ -ray sources show multifrequency behavior similar to blazars, satisfying at least one of the following criteria: (i) are listed as blazars of uncertain type (BZUs) in the Roma-BZCAT (Massaro et al. 2009; Massaro et al. 2015) or (ii) are sources with a flat radio spectrum and/or showing the typical two-humped SED and listed in at least one of the catalogs used to associate  $\gamma$ -ray sources in the *Fermi* catalogs.

In 2012, we started an optical spectroscopic campaign to perform follow up observations of UGSs for which our statistical algorithms based on the infrared colors (Massaro et al. 2012b; D’Abrusco et al. 2013) identified a potential counterparts (see e.g., Paggi et al. 2014; Massaro et al. 2014, for the initial results of our campaign), as well as to search for a blazar confirmation on the nature of the BCUs (Álvarez Crespo et al. 2016a). To date more than 250 new blazars have been discovered thanks to our optical campaign (see e.g., Massaro et al. 2016b, for a recent review) and will be

listed in the future releases of the *Fermi* gamma-ray catalogs.

Results of our follow up optical campaign were used by several groups to: (i) build the luminosity function of BL Lacs (see e.g., Ajello et al. 2014); (ii) select potential targets for the Cherenkov Telescope Array (see e.g., Massaro et al. 2013d; Arsioli et al. 2015); (iii) obtain stringent limits on the dark matter annihilation in sub-halos (see e.g., Zechlin & Horns 2012; Berlin & Hooper 2014); (iv) search for counterparts of new flaring gamma-ray sources (see e.g., Bernieri et al. 2013); (v) test new gamma-ray detection algorithms (see e.g., Campana et al. 2015; Campana et al. 2016; Campana et al. 2017); (vi) perform population studies on the UGSs (see e.g., Acero et al. 2013) and (vii) discover the new subclass of radio weak BL Lacs (see e.g., Massaro et al. 2017), to name a few.

Here we present an analysis of the spectroscopic observations collected between 2016 and 2017 on a sample of BCUs. The current paper is organized as follows. In § 2.1 we present the sample selection, then in § 2.2 we briefly describe the data reduction procedures. § 3 is devoted to our results while summary and conclusions are given in § 4. Unless otherwise stated we adopt cgs units for numerical results and spectral indices,  $\alpha$ , are defined by flux density,  $S_\nu \propto \nu^{-\alpha}$ . We also adopt a cosmological model with  $H_0 = 70$ ,  $\Omega_M = 0.3$  and  $\Omega_\Lambda = 0.7$ .

## 2 Observations

### 2.1 Sample selection

To be consistent with our previous analyses, throughout this paper we will adopt the Roma-BZCAT (Massaro et al. 2015) nomenclature: labeling as BZB the BL Lac subclass, and as BZQ the Flat spectrum radio quasars subclass.

As in previous analyses, we built a list of possible targets out of the potential counterparts of the UGSs with IR colors (see also D’Abrusco et al. 2014) or low radio frequency spectra (below  $\sim 1$  GHz Massaro et al. 2013e; Nori et al. 2014; Giroletti et al. 2016) similar to known, associated, *Fermi* blazars; or out of the associated candidate counterparts to BCUs as listed by the Fermi catalogs (Ackermann et al. 2015; Acero et al. 2015). Out of those targets, we selected those that were visible during the observing nights awarded to our optical spectroscopic campaign. The final sample is further reduced after taking into account magnitude limits for each observatory, which in our case range from 18 to 19.5 magnitudes in the R band.

We observed 30 targets associated with *Fermi* gamma-ray sources and classified as BCUs in the 3LAC (Ackermann et al. 2015), then we also observed 4 BZBs already present in the latest version of the Roma-BZCAT for which a spectroscopic redshift estimate is not reported in the literature. In the latter case given the variable emission of BL Lacs we re-observed these sources hoping to find them in a low/quiescent state so to potentially detect some emission and/or absorption features in their optical spectra, the same strategy we adopted in the past to fill gaps in our schedule during the observations (Massaro et al. 2015a; Campana et al. 2015b; Landoni et al. 2015a).

We also observed one BL Lac candidate, as classified in the Roma-BZCAT, that is a source classified as BL Lac but not confirmed, i.e., with only a description of its optical spectrum available in the literature but no images to verify it. This source, 5BZB J0607+4739, has been also associated with the *Fermi* object: 3FGL J0607.4+4739 (Massaro et al. 2015a). Finally, we also observed one source listed as a potential blazar-like counterpart of the UGS 3FGL J0952.8+0711, a blazar candidate indicated by our procedures based on the IR colors of gamma-ray blazars (D’Abrusco et al. 2013). In summary, our sample includes a total of 36 sources.

It is worth noticing that, given that they are BCUs, some information was already known beforehand. In some cases, the source was already classified as an AGN due to its physical properties but a proper classification (as either BL Lac or FSRQ) was missing. For example, in the cases of 3FGL J1816.9-4944 and 3FGL J1911.4-1908 (Massaro et al. 2015a, and references therein), for which an optical spectral classification was necessary to confirm their nature. In the case of 3FGL J0952.8+2817, optical data was already available in the literature but was non-conclusive (Mahony et al. 2011; Álvarez Crespo et al. 2016b). The BZB sources are the only ones already classified, for which we aim only to pinpoint their redshifts. Finally, a redshift of 0.591 was already reported in the literature for the candidate counterpart of object 3FGL J0922.8-3959 (White et al. 1988), although there were no optical spectra available. From our spectrum, the object shows strong emission lines, at a redshift of  $z = 0.595$ , which is slightly different but still compatible with the previous value. Lastly, an optical spectroscopic identification for the UGS source 3FGL J0952.8+0711 was later published in the literature (Paiano et al. 2017c). We nevertheless checked whether this source showed any signs of spectral variability. As for the rest of our sample, no optical information whatsoever was found.

## 2.2 Data reduction

All our data were acquired, reduced and analyzed following the same method adopted in our previous analyses of this spectroscopic campaign. Here we reported only the basic details regarding the data collection and a brief overview of our standard procedure used for the extraction of the optical spectra, more information can be found in our previous works (see e.g., Ricci et al. 2015; Álvarez Crespo et al. 2016b; Álvarez Crespo et al. 2016c; Peña-Herazo et al. 2017, for additional details).

Targets were observed at several observatories:

- Three sources were observed with the 2.1 m telescope at the San Pedro Martir (SPM) Observatory, Mexico, on two runs: on 2016/01/16 the first one and between 2017/08/22 and 2017/08/24 the second one. We used the Boller & Chivens spectrograph with a resolution of 2.3 Å and a spectral range of 3800 Å to 8200 Å.
- Twenty-four sources were observed with the 4.1 m telescope from the Southern Astrophysical Research Observatory (SOAR), in Chile, on two runs between 2017/05/08 and 2017/05/09, and between 2017/08/18 and 2017/08/20, respectively. We used the Goodman spectrograph with a resolution of 2 Å and a spectral range from 4000 Å to 8000 Å.
- One source was observed with the 2.5 m Northern Optical Telescope (NOT), in 2016/01/14. We used the ALFOSC spectrograph with a resolution of 7 Å and a spectral range covering from 4200 Å to 9700 Å.
- Eight sources were observed with the 4 m telescope at the Kitt Peak National Observatory (KPNO), USA, between 2016/08/12 and 2016/10/12. We used the KOSMOS spectrograph with a resolution of 1 Å and a spectral range covering from 5000 Å to 8200 Å.

All the data were reduced using the standard IRAF procedures for bias and flat correction, for cosmic ray and sky subtraction, and for wavelength and flux calibration. Wavelength calibration was performed with spectra from comparison lamps taken immediately after or right before the pointing of the object of interest, to minimize flexion issues, if any. Spectrophotometric standards were taken every night with the same configuration, for flux calibration purposes. To remove cosmic rays we used the L.A.Cosmic IRAF algorithm (van Dokkum 2001), which provides a robust identification and removal of cosmic rays. In the cases in which more than one exposure was taken (to ensure minimum influence of the cosmic rays over the final result), the final spectra were combined. All the final spectra were dereddened for galactic absorption assuming  $E_{(B-V)}$  values as given by the

NASA/IPAC Galactic Dust<sup>1</sup>, Reddening and Extinction maps (Schlafly & Finkbeiner 2011), and normalized to better visualize spectral features (if any).

All the details about our sample together with the log of our observations are presented in Table 1, where we report the *Fermi* name and that of its assigned counterpart taken from the 3LAC catalog (Ackermann et al. 2015), the *WISE* name, its classification based on the spectra collected, an estimated redshift (for those sources showing emission/absorption lines), the observing dates, the average signal-to-noise ratio (SNR) and the exposure time. The spectra presented in this work show all SNRs of at least 10, to strengthen the confidence in our results. Spectra with an SNR of less than 30 are flagged, to indicate that the resulting classification should be taken with caution. We claim a line identification whenever there are at least two absorption and/or emission lines present, that can be identified with a single redshift value. The only exceptions to this are 3FGL J2107.7-4822 and 3FGL J2213.6-4755, for which the resulting redshift are only a lower limit.

## 3 Results and Source details

As occurred in our previous BCU counterpart analyses (Álvarez Crespo et al. 2016a), we found that a large fraction of them are classifiable as BL Lacs. In particular, as shown in Table 1, 23 out of 30 BCUs pointed are BL Lacs, 11 with a certain redshift estimate, and 11 with a classical featureless spectrum. The remaining one is SUMSS J221330-475426, associated with 3FGL J2213.6-4755 and with a lower limit on its  $z$  of 1.529. This lower limit is due to the presence of some absorption lines from intervening systems along the line of sight. There are also 3 out of the 12 BZBs, namely: PMN J0040-2340, PMN J0301-1652 and PMN J1911-1908, associated with 3FGL J0040.5-2339, 3FGL J0301.4-1652 and 3FGL J1911.4-1908, respectively, that appear to have the optical spectrum partially dominated by the one of their host galaxy and thus could resemble the BZG definition reported in the latest version of the Roma-BZCAT (see also Massaro et al. 2015, for more details). It is worth mentioning that SUMSS J221330-475426, the associated counterpart the BCU 3FGL J2213.6-4755, is a BL Lac source with a measurable redshift of  $>1.529$  based on FeII and MgII absorption doublets. As these doublets are very narrow, we conclude they must be from an intervening system, thus making the  $z$  value a lower

<sup>1</sup><http://irsa.ipac.caltech.edu/applications/DUST/>

Fermi Name	Association	WISE Name	Fermi class	BZCat class	Redshift	Obs. date [yyyy-mm-dd]	SNR	Exp. time [s]	Obs.
3FGL J0021.6-6835*	PKS 0021-686	J002406.72-682054.5	BCU	QSO	0.354	2017-08-20	11	2x600	SOAR
3FGL J0040.5-2339*	PMN J0040-2340	J004024.90-234000.7	BCU	BZB/galaxy	0.213	2017-08-18	14	2x700	SOAR
3FGL J0050.0-4458	PMN J0049-4457	J004916.62-445711.2	BCU	QSO/Sy	0.121	2017-08-20	31	2x500	SOAR
3FGL J0059.1-5701*	PKS 0056-572	J005846.59-565911.4	BCU	QSO	0.677	2017-08-18	15	2x1000	SOAR
3FGL J0133.2-5159*	PKS 0131-522	J013305.75-520003.9	BCU	QSO	0.925	2017-08-18	17	2x1200	SOAR
3FGL J0211.2-0649*	NVSS J021116-064422	J021116.95-064419.9	BCU	BZB	0.194	2017-08-20	17	2x500	SOAR
3FGL J0301.4-1652*	PMN J0301-1652	J030116.62-165245.0	BCU	BZB/galaxy	0.278	2017-08-20	27	2x800	SOAR
3FGL J0623.3+3043	B6 J0623+3045	J062316.03+304457.7	BCU	BZB	?	2016-12-09	30	2x1200.0	KPNO
3FGL J0653.6+2817*	B6 J0653+2816	J065344.26+281547.5	BCU	BZB	?	2016-12-10	25	2x900	KPNO
3FGL J0723.7+2050*	GB6 J0723+2051	J072348.34+205130.8	BCU	BZB	?	2016-01-14	22	3x600	NOT
3FGL J0748.8+4929	VSS J074837+493040	J074837.76+493041.0	BCU	BZB	?	2016-12-09	75	2x1800	KPNO
3FGL J0922.8-3959*	PKS 0920-39	J092246.42-395935.0	BCU	QSO	0.595	2017-05-08	11	3x600	SOAR
3FGL J1052.8-3741*	PMN J1053-3743	J105258.09-374318.6	BCU	BZB	?	2017-05-09	16	3x400	SOAR
3FGL J1440.0-3955*	IRXS J143949.8-3955524	J143950.86-395518.8	BCU	BZB	0.300	2017-08-19	11	1x1000	SOAR
3FGL J1559.8-2525*	NVSS J160005-252439	J160005.35-252439.7	BCU	BZB	0.416	2017-08-18	24	1x1200	SOAR
3FGL J1816.9-4944*	PMN J1816-4943	J181655.99-494344.7	BCU	QSO	1.70	2017-08-20	27	2x1200	SOAR
3FGL J1842.3-5841*	IRXS J184230.6-584202	J184229.83-584157.5	BCU	BZB	0.421	2017-05-09	28	3x770	SOAR
3FGL J1911.4-1908	PMN J1911-1908	J191129.74-190824.8	BCU	BZB/galaxy	0.138	2017-08-20	38	3x870	SOAR
3FGL J1954.9-5640	IRXS J195503.1-564031	J195502.86-564028.8	BCU	BZB	0.221	2017-08-18	42	2x900	SOAR
3FGL J2046.7-1011	PMN J2046-1010	J204654.33-101040.2	BCU	BZB	?	2017-08-18	30	2x1000	SOAR
3FGL J2103.9-6233*	PMN J2103-6232	J210338.38-623225.8	BCU	BZB	?	2017-08-19	13	2x800	SOAR
3FGL J2107.7-4822*	PMN J2107-4827	J210744.48-482802.9	BCU	QSO	>0.519	2017-08-18	19	2x1200	SOAR
3FGL J2126.5-3926*	PMN J2126-3921	J212625.19-392122.2	BCU	BZB	?	2017-08-20	15	4x1300	SOAR
3FGL J2144.2+3132*	MG3 J214415+3132	J214415.22+313339.2	BCU	BZB	?	2017-08-22	23	3x1800	SPM
3FGL J2159.2-2841*	NVSS J215910-284115	J215910.92-284116.4	BCU	BZB	0.270	2017-08-20	27	2x900	SOAR
3FGL J2212.6+2801*	MG3 J221240+2759	J221239.11+275938.4	BCU	BZB	?	2017-08-24	13	3x1800	SPM
3FGL J2213.6-4755*	SUMSS J221330-475426	J221330.35-475425.2	BCU	BZB	>1.529	2017-08-18	28	2x1200	SOAR
3FGL J2305.3-4219*	SUMSS J230512-421859	J230512.44-421857.2	BCU	BZB	?	2017-08-20	13	3x1200	SOAR
3FGL J2316.8-5209	SUMSS J231701-521003	J231701.72-521001.4	BCU	BZB	0.646	2017-08-18	32	3x1200	SOAR
3FGL J2348.4-5100	SUMSS J234852-510311	J234853.10-510314.0	BCU	BZB	0.392	2017-08-20	31	2x1200	SOAR
3FGL J0115.8+2519	5BZB J0115+2519	J011546.15+251953.4	BZB	BZB	?	2016-12-09	50	2x900	KPNO
3FGL J0540.4+5823	5BZB J0540+5823	J054030.01+582338.4	BZB	BZB	?	2016-12-10	25	2x1200	KPNO
3FGL J0625.2+4440	5BZB J0625+4440	J062518.26+444001.6	BZB	BZB	?	2016-12-08	50	2x900	KPNO
3FGL J0708.9+2239	5BZB J0708+2241	J070858.28+224135.4	BZB	BZB	?	2016-01-16	29	1x1800	SPM
3FGL J0607.4+4739	5BZB J0607+4739	J060723.25+473947.0	BZB	BZB	?	2016-12-10	70	2x900	KPNO
3FGL J0952.8+0711	VSS J095249+071330	J095249.57+071330.1	UGS	BZB	0.574†	2016-12-09	15	2x900	KPNO

**Table 1** Results from our campaign. In column 1 we report the 3FGL name; in column 2 the associated counterpart; in column 3 the WISE counterpart; in column 4 the Fermi class; in column 5 the Roma-BZCAT class we assigned to it from our data; in column 6 its redshift (as measured from our spectra, if any); in column 7 the observation date; in column 8 the signal to noise ratio; in column 9 the total number and length, in seconds, of exposures taken; and finally in column 10 we report the observation date at which the data were taken. It is worth noticing that the precise (with an uncertainty of less than 1'') equatorial celestial coordinates in J2000.0 are given in the WISE denomination. \*Spectra with SNR less than 30 are marked with an asterisk, to indicate that the resulting classification should be taken with caution. †The redshift value reported for this object is available on the literature, but in our spectrum there are no detected lines.

limit. This means it is one of the few distant BZBs lying within the end of the distance distribution for BL Lacs (Massaro et al. 2009). According to the Roma-BZCAT, only 15 BL Lac objects are reported at redshifts higher than 1, with 12 of them being uncertain. This is why there are a number of campaigns to find such objects (Landoni et al. 2018), which can significantly help population studies. Lastly, in the case of SUMSS J231701-521003, associated with 3FGL J2316.8-5209, we detect two absorption doublets. They are compatible with the MnII and FeII resonance lines, the first, and with the CaII doublet the second, both at a redshift of  $z = 0.646$ . However, the doublet in the blue end of the spectrum could be also attributed to the MgII lines from an intervening system at  $z = 0.517$ .

The remaining 7 BCUs observed are all classifiable as QSO with a redshift estimate, with the only exception for PMN J0049-4457 associated with the *Fermi* source 3FGL J0050.0-4458, which shows an optical spectrum more similar to that of the nucleus of a Seyfert galaxy 1.8 or 1.9 (see e.g., Masetti et al. 2010; Rojas et al. 2017), but has a clear flat radio spectrum and a bolometric luminosity typical of a BZQ (of the order of  $10^{46}$  erg/s). Moreover, although PMN J2107-4827, associated with 3FGL 2107.7-4822, shows a broad emission feature in its spectrum and is thus classified as a QSO, we can only give a lower limit to its redshift due to an intervening system (i.e.,  $z > 0.519$ ) from which we detect the MgII double absorption. The emission line, although certainly from the object itself, remains unidentified.

Our optical spectrum of 5BZB J0607+4739, the BL Lac candidate listed in the Roma-BZCAT and associated with 3FGL J0607.4+4739, is featureless thus suggesting it is classifiable as BL Lac; as occurs for all the other four BZBs, namely: 5BZB J0115+2519, 5BZB J0540+5823, 5BZB J0625+4440 and 5BZB J0708+2241, for which, unfortunately, it was not possible to obtain a  $z$  estimate.

Finally, the low-energy source VSS J095249+071330 that lies within the positional uncertainty region of the UGS 3FGL J0952.8+0711 is a classical BZB with a featureless optical spectrum. This is in agreement with the spectrum already reported in the literature (Paiano et al. 2017c), although in our case no lines are visible. This is probably due to the lower resolution of our spectrum.

All the lines measured from the observed spectra are reported in Table 2 for each 3FGL counterpart, alongside their respective line identifications.

## 4 Summary and conclusions

This is paper number VIII of the series dedicated to the optical spectroscopic campaign of UGSs and BCUs listed in the *Fermi* catalogs, aiming to obtain spectroscopic confirmation of their associated and/or potential low-energy counterparts. The analysis presented here is almost entirely dedicated to BCUs as occurred in additional works (see e.g., Álvarez Crespo et al. 2016a).

Here we reported the follow up spectroscopic observations of a sample listing 36 targets, carried out thanks to the SPM, SOAR, KPNO and NOT observatories. All of them were observed between January 2016 and August 2017. The selected sample includes 30 BCUs, 4 BZBs already classified in the latest version of the Roma-BZCAT and associated with *Fermi* sources but lacking a  $z$  estimate, and 1 BL Lac candidate also associated with a *Fermi* source but lacking a spectroscopic confirmation of its classification. Additionally, we re-observed the object VSS J095249+071330, an infrared source lying within the position uncertainty region of the UGS 3FGL J0952.8+0711 showing IR colors similar to those of known *Fermi* blazars (Massaro et al. 2011), and already identified as a BL Lac object (Paiano et al. 2017c).

Our results can be summarized as follows.

- Twenty-three out of thirty BCUs are classifiable as BL Lac objects. The remaining 7 are all QSOs, and thus presenting a flat radio spectrum can be classified as BZQs, with the only exception of PMN J0049-4457, associated with 3FGL J0050.0-4458, for which the optical spectrum resembles that of an absorbed Seyfert galaxy.
- For 12 of the BL Lac objects we are able to obtain a  $z$  estimate, one of them being only a lower limit due to spectral features ascribable to intervening systems along the line of sight.
- All the four BZBs re-observed to get an estimate of their redshift show featureless optical spectra. This is also the case of 5BZB J0607+4739, the BL Lac candidate listed in the Roma-BZCAT and associated with 3FGL J0607.4+4739. Our observations confirm its BL Lac nature.
- Finally, we also re-observed the BZB object VSS J095249+071330, already associated with 3FGL J0952.8+0711. We do not detect any spectral variability with the results published previously in the literature.
- We could associate an optical counterpart for the BCU 3FGL J2213.6-4755, which is SUMSS J221330-475426. This source is a BL Lac lying at a redshift of  $>1.529$ , which means it is one of the rare, most distant BL Lacs, which are counted by tens.

Name [3FGL]	z	Line	Obs. wavelength [Å]	Eqw. [Å]	Eqw. error [Å]
3FGL J0021.6-6835	0.354	[NeVI]	4640	+2.1	0.1
		[OII]d	5040	+6.9	0.2
		[NeIII]	5240	+3.1	0.1
		HeI	5267	+1.6	0.1
		H $\epsilon$	5376	+4.1	0.2
		H $\delta$	5555	+18	1
		H $\gamma$	5882	+29.8	0.9
		FeII	~6160	-	-
		H $\beta$	6584	+57	3
		[OIII]	6717	+13.8	0.4
		[OIII]	6782	+53	1
		FeII	7180	-	-
3FGL J0040.5-2339	0.213	CaII (K)	4772	5.0	0.2
		CaII (H)	4813	3.8	0.2
		G band	5220	2.8	0.2
		MgI	6280	3.3	0.2
3FGL J0050.0-4458	0.121	[NeIII]	4338	+2.5	0.2
		CaII (K)	4411	3.5	0.2
		CaII (H)	4450	-	-
		G band	4825	3.3	0.4
		H $\gamma$	4873	-	-
		[OIII]	5561	+4.1	0.3
		[OIII]	5615	+9.9	0.1
		Mg	5803	2.4	0.3
		Na	6607	2.0	0.1
		[OI]	7065	+1.8	0.1
		[NII]	7343	+2.4	0.3
		H $\alpha$	7367	+41	3
		[NII]	7383	+4.3	0.6
[SII]	7532	+1.4	-		
[SII]	7549	+1.7	-		
3FGL J0059.1-5701	0.677	MgII	4694	+46	4
		FeII	~4976	-	-
		[NeV]	5749	-	-
		[OII]d	6257	-	-
		NeIII	6494	-	-
		HeI	6527	+1.4	0.1
		H $\epsilon$	6665	+4.0	0.2
		[SII]	6873	-	-
		H $\delta$	6919	-	-
		H $\gamma$	7299	+35	1

**Table 2** The measured spectral features for our sample. In column 1 we report the 3FGL name, in column 2 its redshift as obtained from our optical spectra, in column 3 the line identification, in column 4 its observed wavelength in angstroms, and in columns 5 and 6 its observed equivalent width and its error. All unidentified lines are marked with a question mark, as well as all the unknown redshift values. Any given equivalent width values that could not be properly measured due to uncertainties are reported as null. When the measured equivalent width corresponds to an emission line, it is reported with an explicit + sign; otherwise it corresponds to an absorption line. \*:The  $H\alpha$  and  $H\beta$  lines present in the spectrum of 3FGL J1816.9-4944 are not attributed to the blazar, but to an intervening system.

Name [3FGL]	z	Line	Obs. wavelength [Å]	Eqw. [Å]	Eqw. error [Å]
3FGL J0115.8+2519	?	-	-	-	-
3FGL J0133.2-5259	0.925	FeII	5082	-	-
		FeII	5095	-	-
		MgII	5386	+57	3
		FeII	5683	-	-
		[NeV]	7173	-	-
		[NeIII]	7445	+4.1	0.4
		HeI	7485	+5.1	0.4
		H $\delta$	7892	+18.1	0.9
3FGL J0211.2-0649	0.194	CaII (K)	4696	4.3	0.1
		CaII (H)	4737	3.0	0.1
		G band	5140	2.8	0.1
		H $\beta$	5806	1.6	0.3
		Mg	6180	4.0	0.1
3FGL J0301.4-1652	0.278	CaII (K)	5023	4.0	0.3
		CaII (H)	5071	2.2	0.1
		G band	5500	2.8	0.4
		[OIII]	6335	+2.3	0.2
		[OIII]	6398	+1.9	0.2
		MgI	6611	3.3	0.3
3FGL J0540.4+5823	?	-	-	-	-
3FGL J0607.4+4739	?	-	-	-	-
3FGL J0623.3+3043	?	-	-	-	-
3FGL J0625.2+4440	?	-	-	-	-
3FGL J0653.6+2817	?	-	-	-	-
3FGL J0708.9+2239	?	-	-	-	-
3FGL J0723.7+2050	?	-	-	-	-
3FGL J0748.8+4929	?	-	-	-	-
3FGL J0922.8-3959	0.595	MgII	4456	+65	4
		H $\gamma$	6534	+15	1
		H $\delta$	6930	+39	3
		H $\beta$	7745	+97	5
		[OIII]	+6.9	1	
		[OIII]	+14	2	
3FGL J0952.8+0711	?	-	-	-	-
3FGL J1052.8-3741	?	-	-	-	-
3FGL J1440.0-3955	0.300	CaII (K)	5115	5.8	0.2
		CaII (H)	5160	4.4	0.1
		G band	5595	3.0	0.2
		MgI	6728	2.8	0.1
3FGL J1559.8-2525	0.416	CaII (K)	5579	4.6	0.3
		CaII (H)	5620	2.3	0.1

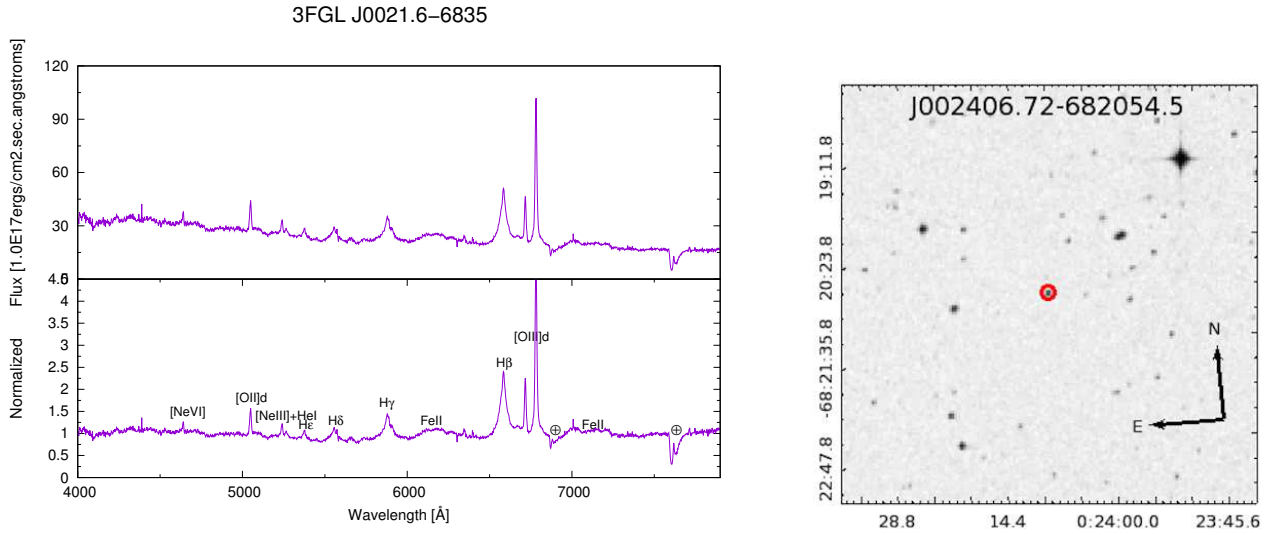
Table 2 (Continued)

Name [3FGL]	z	Line	Obs. wavelength [Å]	Eqw. [Å]	Eqw. error [Å]
3FGL J1816.9-4944	1.70	CIV	4183	+49	4
		H $\beta$ *	4860	2.1	0.1
		H $\alpha$ *	6560	2.7	0.1
		MgII	7562	+3.9	0.2
3FGL J1842.3-5841	0.421	CaII (K)	5592	2.6	0.4
		CaII (H)	5641	2.2	0.2
		G band	6117	3.4	0.5
3FGL J1911.4-1908	0.138	CaII (K)	4476	4.0	0.3
		CaII (H)	4514	3.2	0.2
		G band	4894	3.3	0.3
		H $\beta$	5542	-	-
		[OIII]	5636	+1.8	0.2
		[OIII]	5695	+0.9	0.1
		Na	6705	3.0	0.1
		[NII]	7451	1.0	0.1
		H $\alpha$	7567	+0.7	0.3
		[NII]	7491	2.8	0.1
3FGL J1954.9-5640	0.221	CaII (K)	4802	1.6	0.2
		CaII (H)	4846	1.5	0.1
		G band	5255	0.9	0.1
		MgI+Tell.	6316	2.5	0.2
3FGL J2046.7-1011	-	-	-	-	-
3FGL J2103.9-6233	?	-	-	-	-
3FGL J2107.7-4822	$\geq 0.519$	MgII	4246	2.3	0.2
		MgII	4258	2.0	0.1
		?	7085	+26.2	2.0
3FGL J2126.5-3926	?	-	-	-	-
3FGL J2144.2+3132	?	-	-	-	-
3FGL J2159.2-2841	0.270	CaII (K)	4999	2.6	0.1
		CaII (H)	5042	2.9	0.1
		G band	5463	2.2	0.2
3FGL J2212.6+2801	?	-	-	0.0	0.0
3FGL J2213.6-4755	1.529	FeII	4089	3.5	0.1
		MgII	7071	2.2	0.4
		MgII	7089	1.7	0.2
3FGL J2305.3-4219	?	-	-	-	-
3FGL J2316.8-5209	0.646	MnII?	4241	-	-
		FeII?	4253	-	-
		CaII (K)	6477	1.2	0.1
		CaII (H)	6529	1.4	0.1
		G band	6013	1.6	0.2
3FGL J2348.4-5100	0.398	CaII (K)	5503	1.5	0.1
		CaII (H)	5549	0.8	0.1
		G band	6013	1.6	0.2

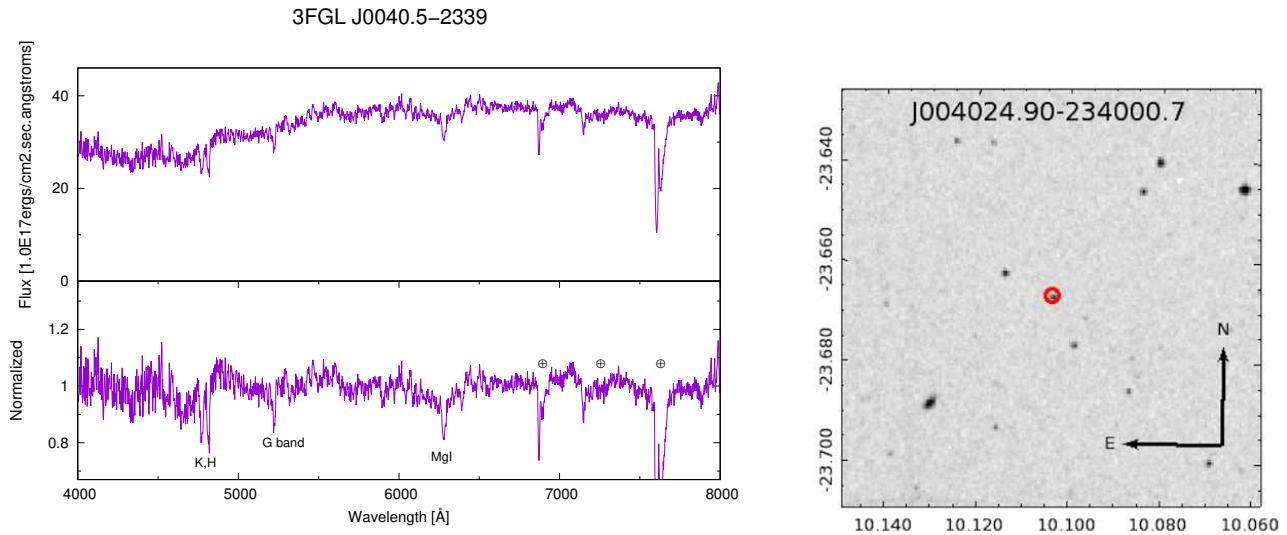
Table 2 (Continued)

The current analysis increases the number of optical spectroscopic confirmation for UGSs and BCUs by  $\sim 20\%$  (Massaro et al. 2016b). It also confirms the trends that a large fraction of the sources classified tend to be BL Lacs, regardless of whether they were selected from the BCU list of the *Fermi* catalogs, or among the objects lying within the positional uncertainty regions of UGSs. These objects are not only the largest known population of gamma-ray sources but continue to be the most elusive class in the gamma-ray sky.

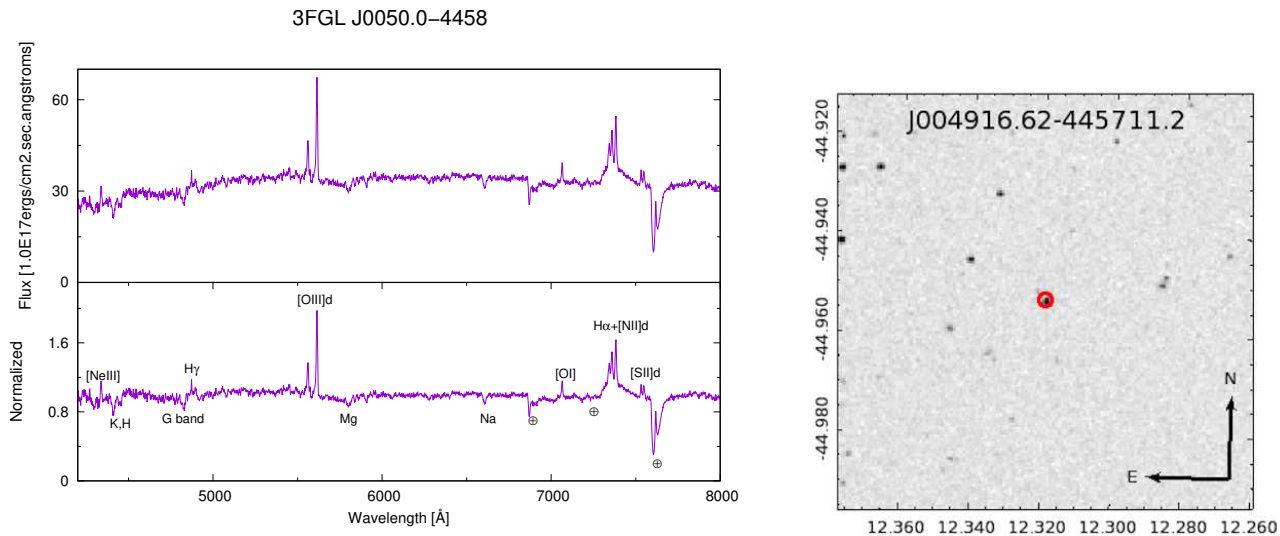
This paper reports the results achieved with single-slit spectroscopic observations collected until August 2017. More results are to come in the near future, given that 10 more nights will be used to complete the BCU observations in the Southern Hemisphere. We expect to carry on with our campaign until the end of 2019, since more nights have been awarded in the next semesters.



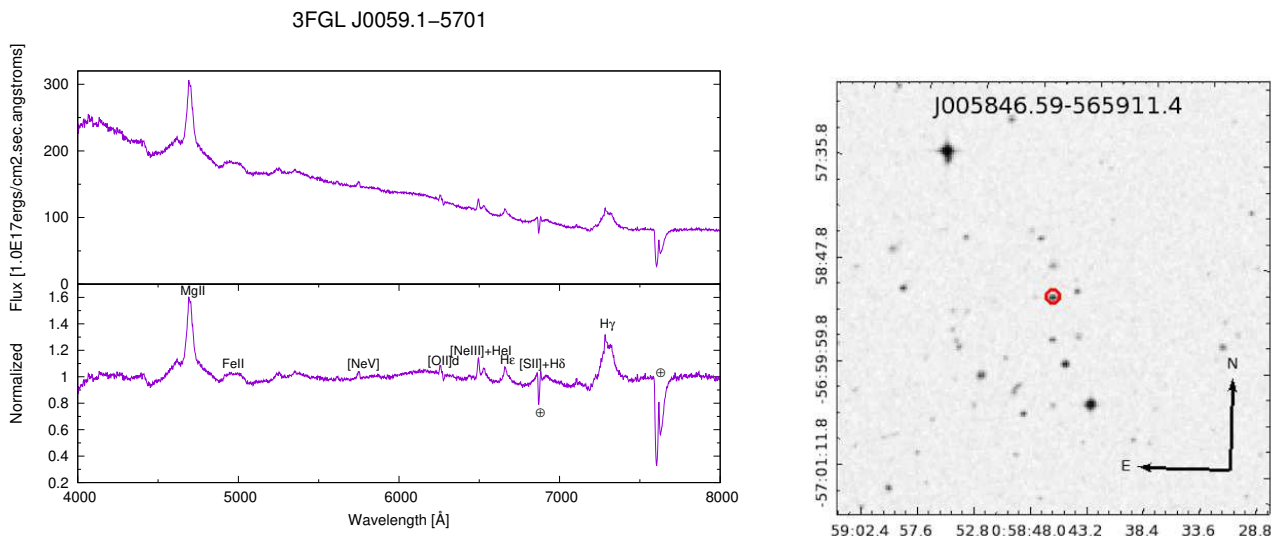
**Fig. 1** (Left panel) Top: Optical spectrum of WISE J002406.72-682054.5 associated with 3FGL J0021.6-6835. Bottom: The same spectrum, normalised to highlight features (if any). If present, telluric lines are marked with  $\oplus$ , and features due to contamination from diffuse interstellar bands are marked with DIB. If there are any doublets, these are marked with a d. The absorption line at  $\sim 5890\text{\AA}$  which is NaI from the Milky Way, is marked as NaIMW. Unidentified lines are marked with a question mark. (Right panel) The finding chart ( $5' \times 5'$ ) retrieved from the Digitized Sky Survey highlighting the location of the optical source: WISE J002406.72-682054.5 (red circle)



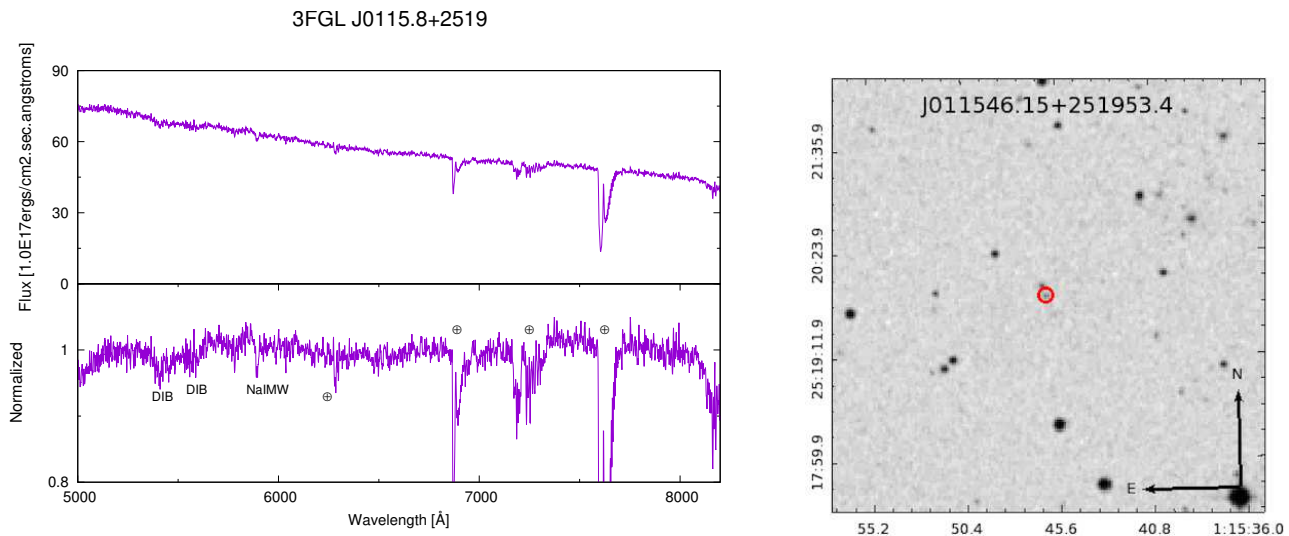
**Fig. 2** (Left panel) Top: Optical spectrum of WISE J004024.90-234000.7 associated with 3FGL J0040.5-2339. Bottom: The same spectrum, normalised to highlight features (if any). If present, telluric lines are marked with  $\oplus$ , and features due to contamination from diffuse interstellar bands are marked with DIB. If there are any doublets, these are marked with a d. The absorption line at  $\sim 5890\text{\AA}$  which is NaI from the Milky Way, is marked as NaIMW. Unidentified lines are marked with a question mark. (Right panel) The finding chart ( $5' \times 5'$ ) retrieved from the Digitized Sky Survey highlighting the location of the optical source: WISE J004024.90-234000.7 (red circle)



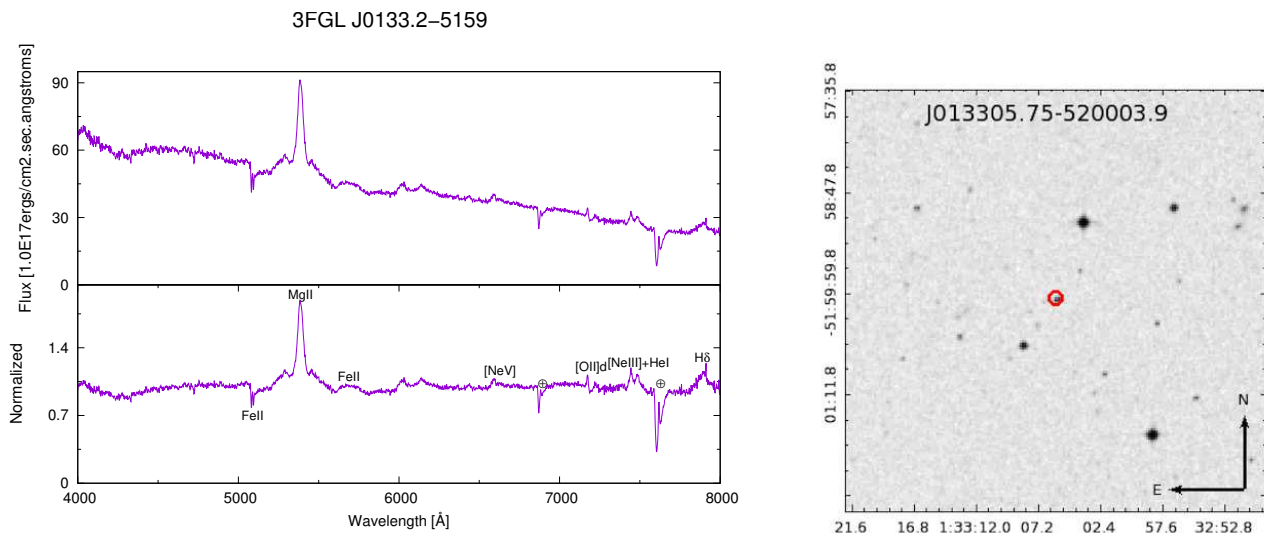
**Fig. 3** (Left panel) Top: Optical spectrum of WISE J004916.62-445711.2 associated with 3FGL J0050.0-4458. Bottom: The same spectrum, normalised to highlight features (if any). If present, telluric lines are marked with  $\oplus$ , and features due to contamination from diffuse interstellar bands are marked with DIB. If there are any doublets, these are marked with a d. The absorption line at  $\sim 5890\text{\AA}$  which is NaI from the Milky Way, is marked as NaIMW. Unidentified lines are marked with a question mark. (Right panel) The finding chart ( $5' \times 5'$ ) retrieved from the Digitized Sky Survey highlighting the location of the optical source: WISE J004916.62-445711.2 (red circle)



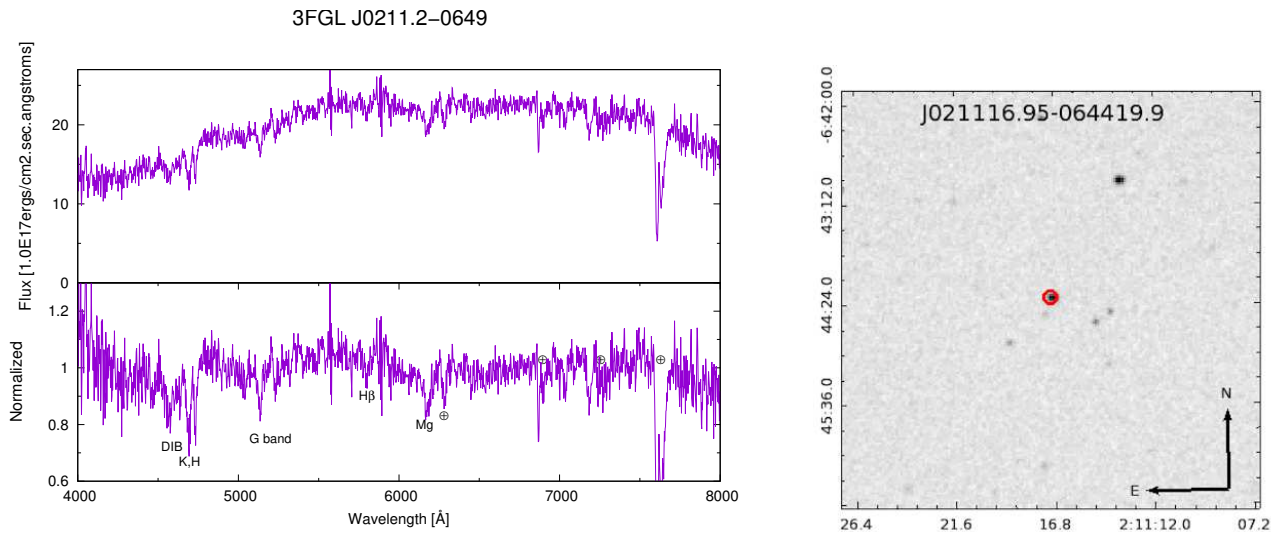
**Fig. 4** (Left panel) Top: Optical spectrum of WISE J005846.59-565911.4 associated with 3FGL J0059.1-5701. Bottom: The same spectrum, normalised to highlight features (if any). If present, telluric lines are marked with  $\oplus$ , and features due to contamination from diffuse interstellar bands are marked with DIB. If there are any doublets, these are marked with a d. The absorption line at  $\sim 5890\text{\AA}$  which is NaI from the Milky Way, is marked as NaIMW. Unidentified lines are marked with a question mark. (Right panel) The finding chart ( $5' \times 5'$ ) retrieved from the Digitized Sky Survey highlighting the location of the optical source: WISE J005846.59-565911.4 (red circle)



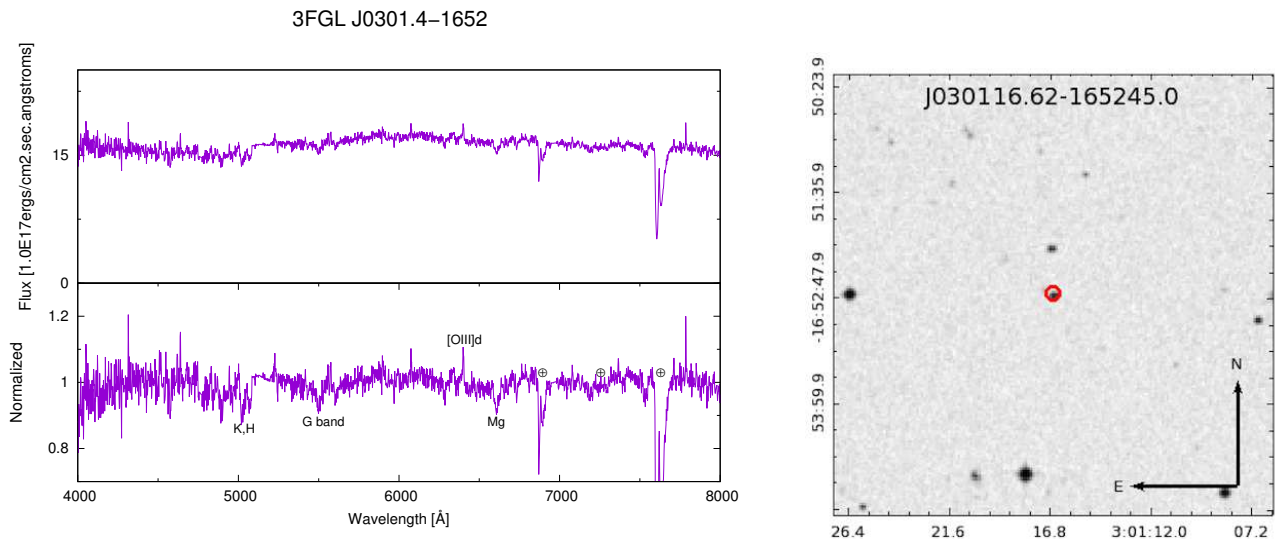
**Fig. 5** (Left panel) Top: Optical spectrum of WISE J011546.15+251953.4 associated with 3FGL J0115.8+2519. Bottom: The same spectrum, normalised to highlight features (if any). If present, telluric lines are marked with  $\oplus$ , and features due to contamination from diffuse interstellar bands are marked with DIB. If there are any doublets, these are marked with a d. The absorption line at  $\sim 5890\text{\AA}$  which is NaI from the Milky Way, is marked as NaIMW. Unidentified lines are marked with a question mark. (Right panel) The finding chart ( $5' \times 5'$ ) retrieved from the Digitized Sky Survey highlighting the location of the optical source: WISE J011546.15+251953.4 (red circle)



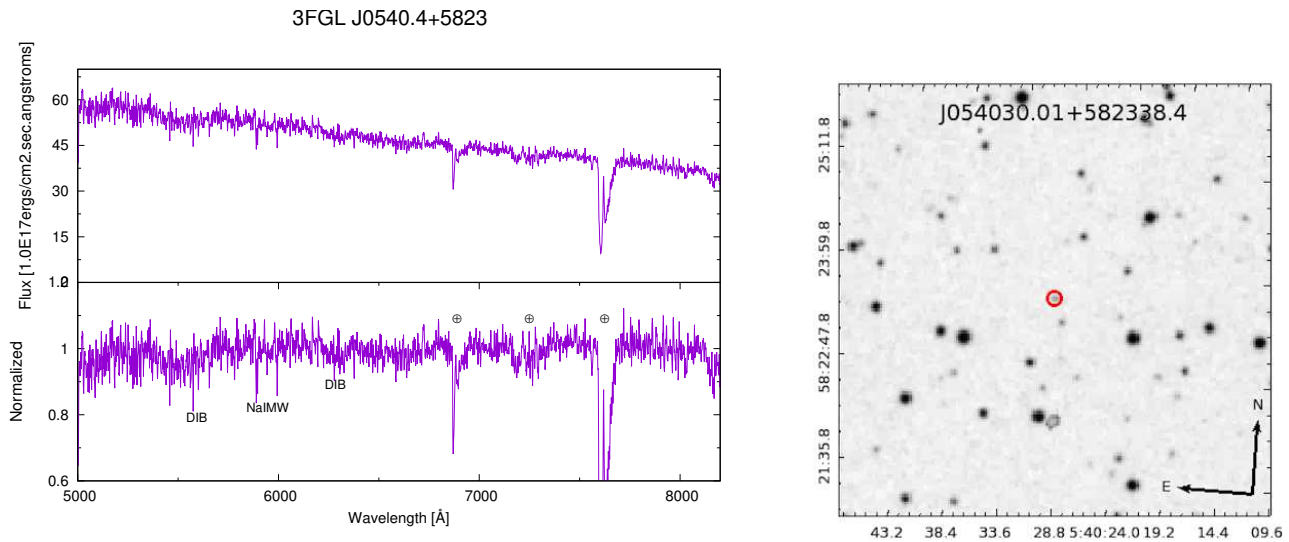
**Fig. 6** (Left panel) Top: Optical spectrum of WISE J013305.75-520003.9 associated with 3FGL J0133.2-5159. Bottom: The same spectrum, normalised to highlight features (if any). If present, telluric lines are marked with  $\oplus$ , and features due to contamination from diffuse interstellar bands are marked with DIB. If there are any doublets, these are marked with a d. The absorption line at  $\sim 5890\text{\AA}$  which is NaI from the Milky Way, is marked as NaIMW. Unidentified lines are marked with a question mark. (Right panel) The finding chart ( $5' \times 5'$ ) retrieved from the Digitized Sky Survey highlighting the location of the optical source: WISE J013305.75-520003.9 (red circle)



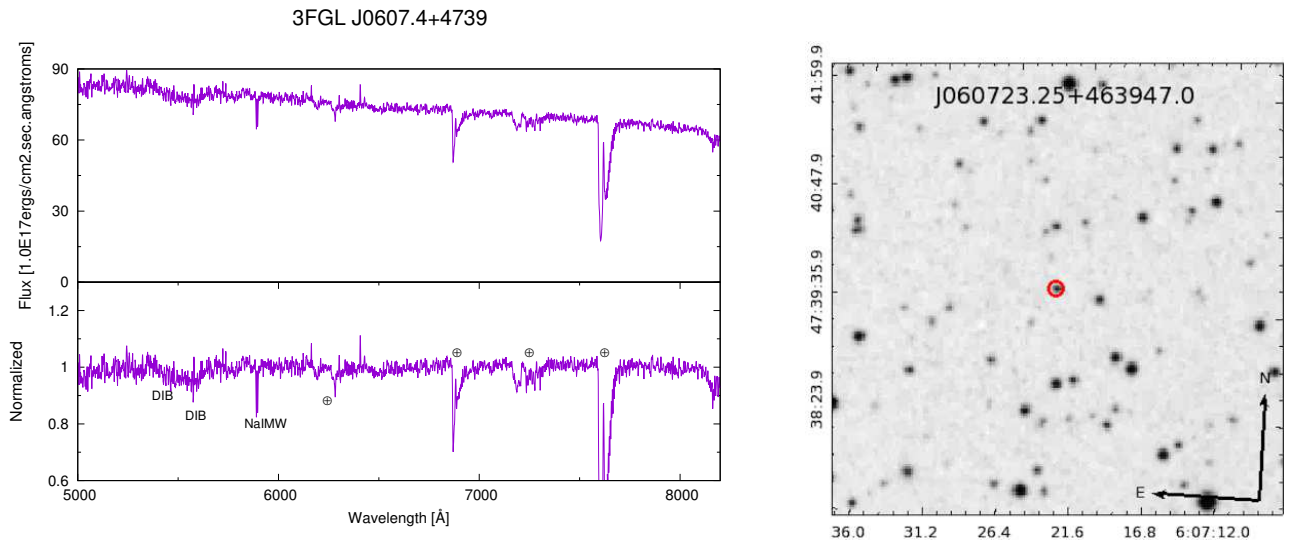
**Fig. 7** (Left panel) Top: Optical spectrum of WISE J021116.95-064419.9 associated with 3FGL J0211.0+1922. Bottom: The same spectrum, normalised to highlight features (if any). If present, telluric lines are marked with  $\oplus$ , and features due to contamination from diffuse interstellar bands are marked with DIB. If there are any doublets, these are marked with a d. The absorption line at  $\sim 5890\text{\AA}$  which is NaI from the Milky Way, is marked as NaIMW. Unidentified lines are marked with a question mark. (Right panel) The finding chart ( $5' \times 5'$ ) retrieved from the Digitized Sky Survey highlighting the location of the optical source: WISE J021116.95-064419.9 (red circle)



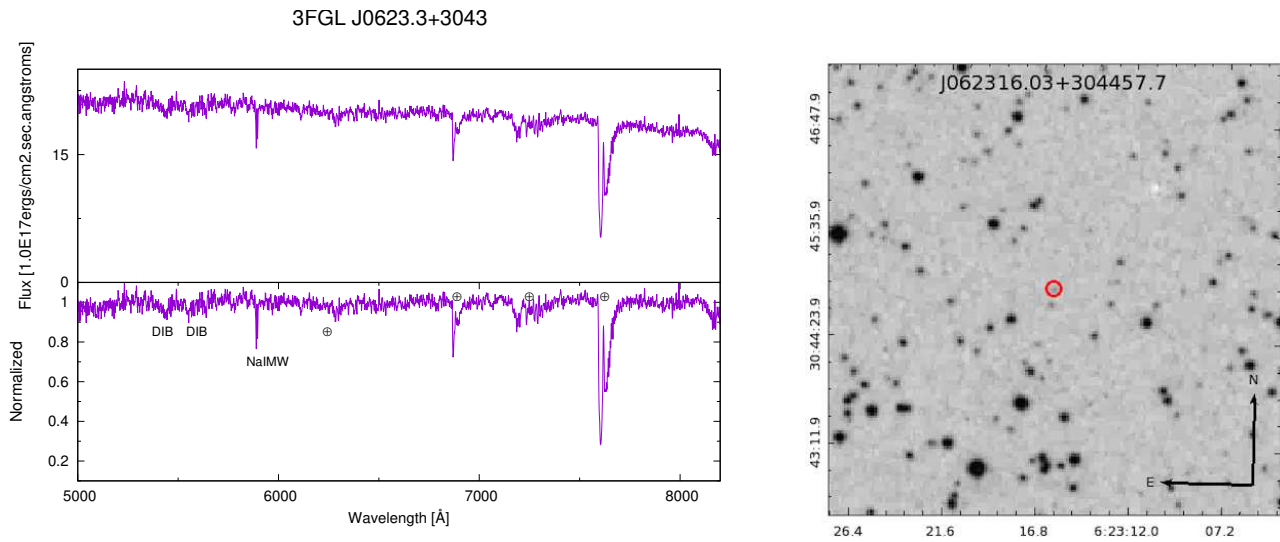
**Fig. 8** (Left panel) Top: Optical spectrum of WISE J030116.62-165245.0 associated with 3FGL J0301.4-1652. Bottom: The same spectrum, normalised to highlight features (if any). If present, telluric lines are marked with  $\oplus$ , and features due to contamination from diffuse interstellar bands are marked with DIB. If there are any doublets, these are marked with a d. The absorption line at  $\sim 5890\text{\AA}$  which is NaI from the Milky Way, is marked as NaIMW. Unidentified lines are marked with a question mark. (Right panel) The finding chart ( $5' \times 5'$ ) retrieved from the Digitized Sky Survey highlighting the location of the optical source: WISE J030116.62-165245.0 (red circle)



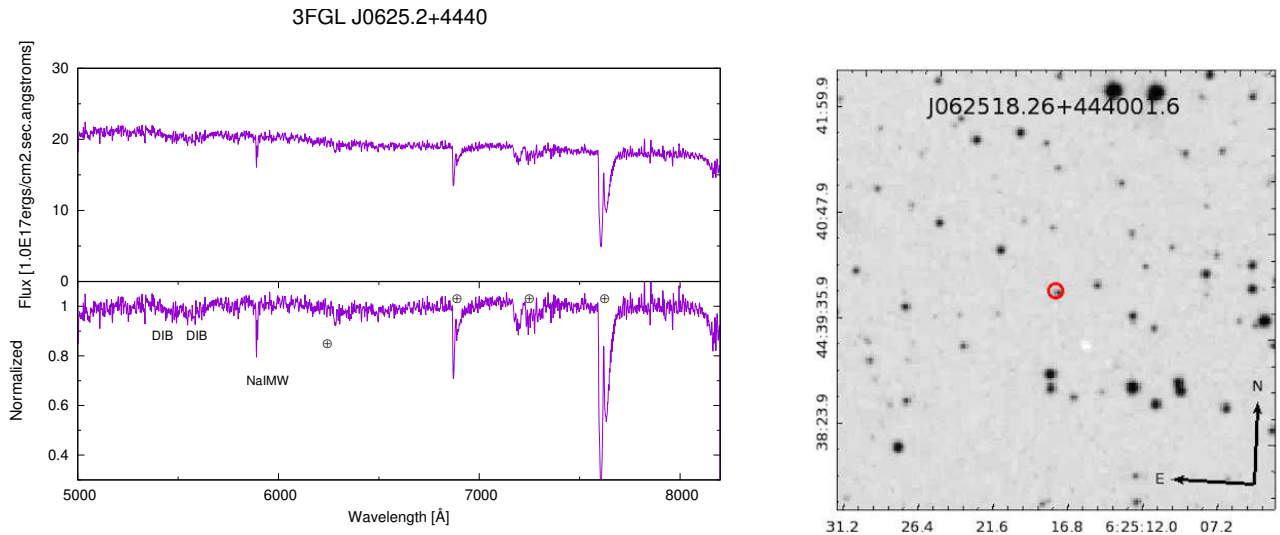
**Fig. 9** (Left panel) Top: Optical spectrum of WISE J054030.01+582338.4 associated with 3FGL J0540.4+5823. Bottom: The same spectrum, normalised to highlight features (if any). If present, telluric lines are marked with  $\oplus$ , and features due to contamination from diffuse interstellar bands are marked with DIB. If there are any doublets, these are marked with a d. The absorption line at  $\sim 5890\text{\AA}$  which is NaI from the Milky Way, is marked as NaIMW. Unidentified lines are marked with a question mark. (Right panel) The finding chart ( $5' \times 5'$ ) retrieved from the Digitized Sky Survey highlighting the location of the optical source: WISE J054030.01+582338.4 (red circle)



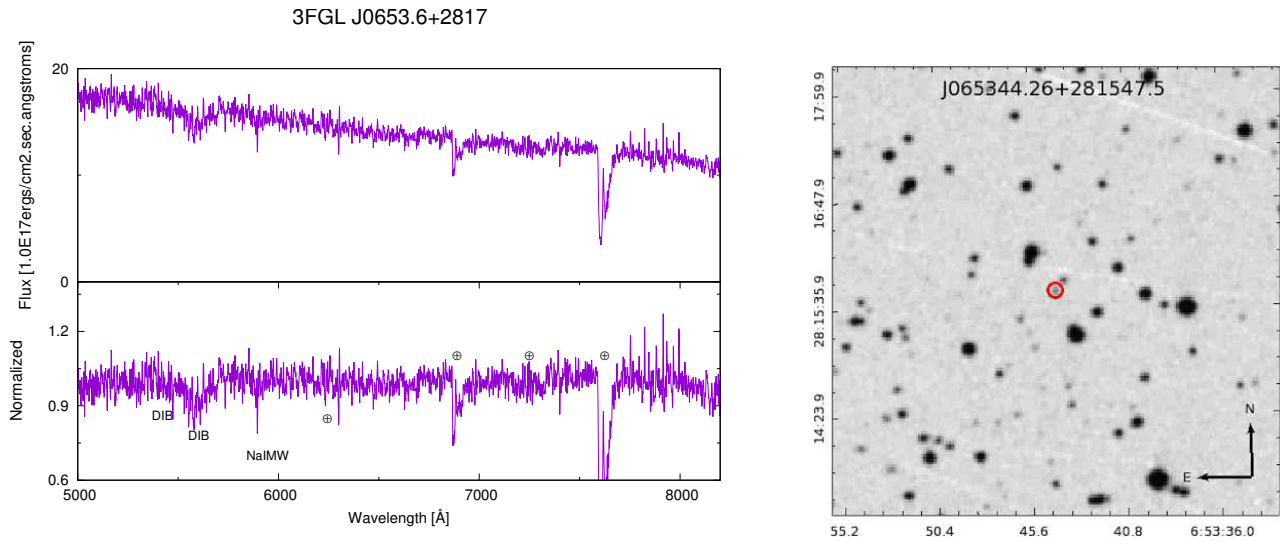
**Fig. 10** (Left panel) Top: Optical spectrum of WISE J060723.25+463947.0 associated with 3FGL J0607.4+4739. Bottom: The same spectrum, normalised to highlight features (if any). If present, telluric lines are marked with  $\oplus$ , and features due to contamination from diffuse interstellar bands are marked with DIB. If there are any doublets, these are marked with a d. The absorption line at  $\sim 5890\text{\AA}$  which is NaI from the Milky Way, is marked as NaIMW. Unidentified lines are marked with a question mark. (Right panel) The finding chart ( $5' \times 5'$ ) retrieved from the Digitized Sky Survey highlighting the location of the optical source: WISE J060723.25+463947.0 (red circle)



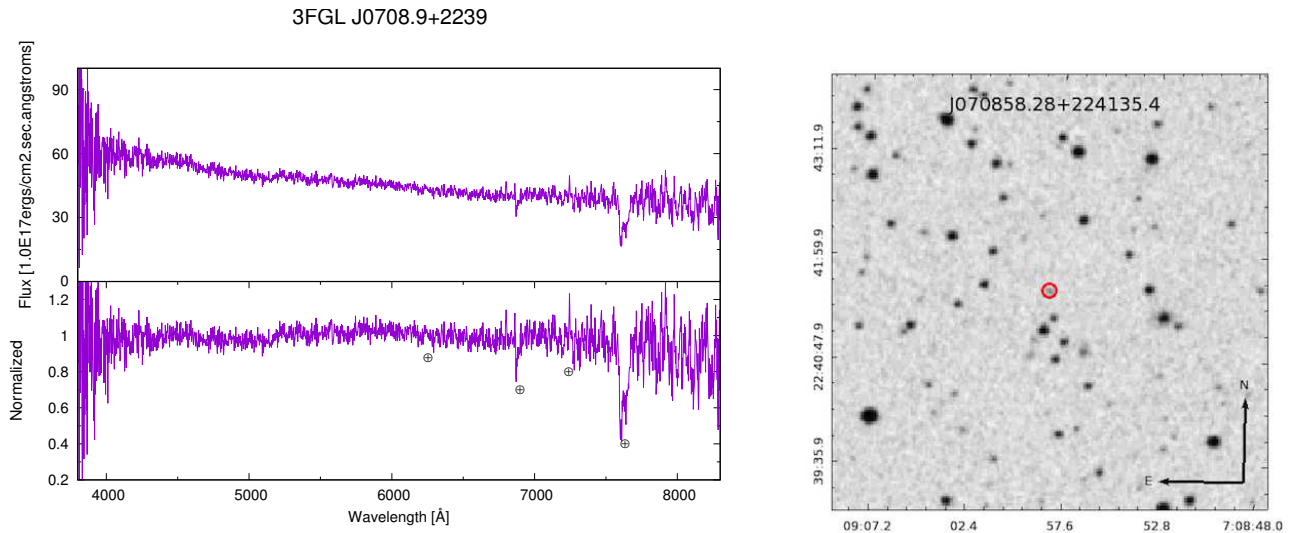
**Fig. 11** (Left panel) Top: Optical spectrum of WISE J062316.03+304457.7 associated with 3FGL J0623.3+3043. Bottom: The same spectrum, normalised to highlight features (if any). If present, telluric lines are marked with  $\oplus$ , and features due to contamination from diffuse interstellar bands are marked with DIB. If there are any doublets, these are marked with a d. The absorption line at  $\sim 5890\text{\AA}$  which is NaI from the Milky Way, is marked as NaIMW. Unidentified lines are marked with a question mark. (Right panel) The finding chart ( $5' \times 5'$ ) retrieved from the Digitized Sky Survey highlighting the location of the optical source: WISE J062316.03+304457.7 (red circle)



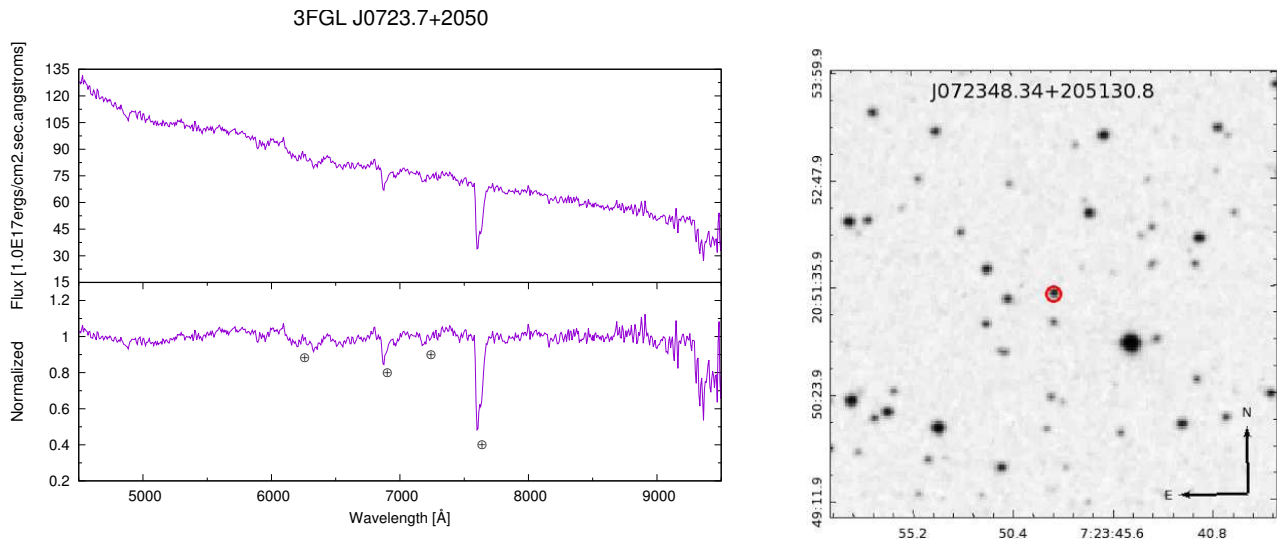
**Fig. 12** (Left panel) Top: Optical spectrum of WISE J062518.26+444001.6 associated with 3FGL J0625.2+4440. Bottom: The same spectrum, normalised to highlight features (if any). If present, telluric lines are marked with  $\oplus$ , and features due to contamination from diffuse interstellar bands are marked with DIB. If there are any doublets, these are marked with a d. The absorption line at  $\sim 5890\text{\AA}$  which is NaI from the Milky Way, is marked as NaIMW. Unidentified lines are marked with a question mark. (Right panel) The finding chart ( $5' \times 5'$ ) retrieved from the Digitized Sky Survey highlighting the location of the optical source: WISE J062518.26+444001.6 (red circle)



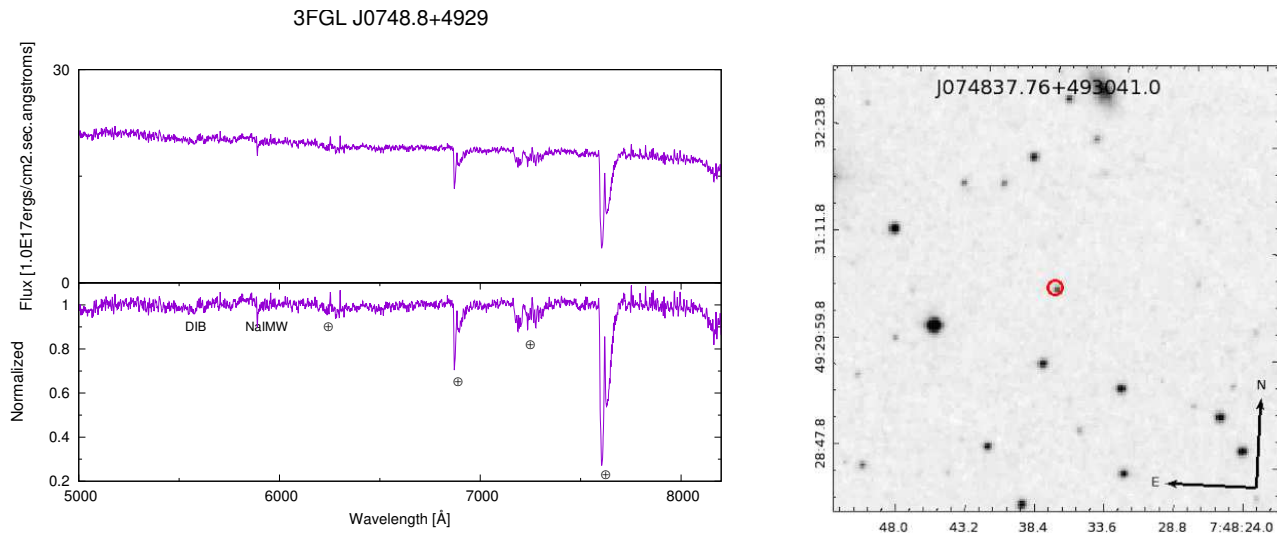
**Fig. 13** (Left panel) Top: Optical spectrum of WISE J065344.26+281547.5 associated with 3FGL J0653.6+2817. Bottom: The same spectrum, normalised to highlight features (if any). If present, telluric lines are marked with  $\oplus$ , and features due to contamination from diffuse interstellar bands are marked with DIB. If there are any doublets, these are marked with a d. The absorption line at  $\sim 5890\text{\AA}$  which is NaI from the Milky Way, is marked as NaIMW. Unidentified lines are marked with a question mark. (Right panel) The finding chart ( $5' \times 5'$ ) retrieved from the Digitized Sky Survey highlighting the location of the optical source: WISE J065344.26+281547.5 (red circle)



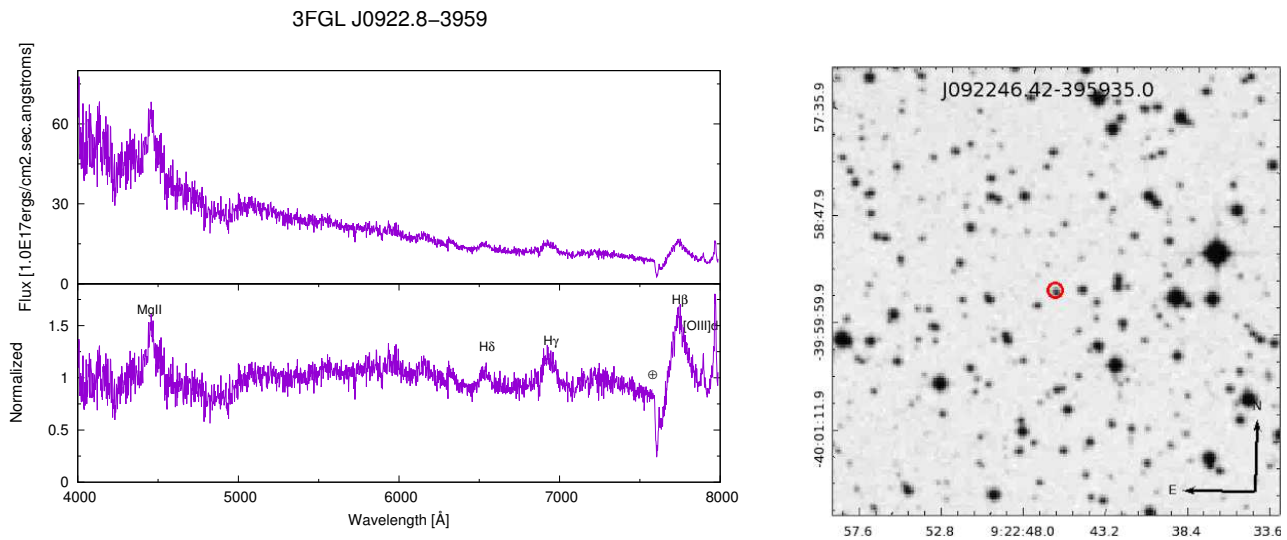
**Fig. 14** (Left panel) Top: Optical spectrum of WISE J070858.28+224135.4 associated with 3FGL J0708.9+2239. Bottom: The same spectrum, normalised to highlight features (if any). If present, telluric lines are marked with  $\oplus$ , and features due to contamination from diffuse interstellar bands are marked with DIB. If there are any doublets, these are marked with a d. The absorption line at  $\sim 5890\text{\AA}$  which is NaI from the Milky Way, is marked as NaIMW. Unidentified lines are marked with a question mark. (Right panel) The finding chart ( $5' \times 5'$ ) retrieved from the Digitized Sky Survey highlighting the location of the optical source: WISE J070858.28+224135.4 (red circle)



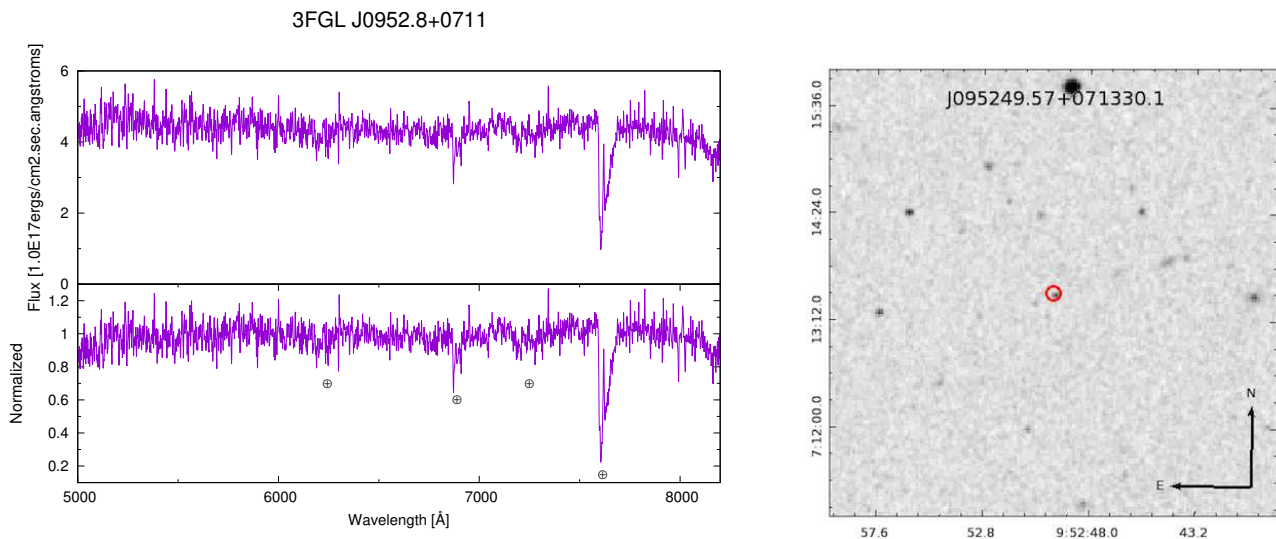
**Fig. 15** (Left panel) Top: Optical spectrum of WISE J072348.34+205130.8 associated with 3FGL J0723.7+2050. Bottom: The same spectrum, normalised to highlight features (if any). If present, telluric lines are marked with  $\oplus$ , and features due to contamination from diffuse interstellar bands are marked with DIB. If there are any doublets, these are marked with a d. The absorption line at  $\sim 5890\text{\AA}$  which is NaI from the Milky Way, is marked as NaIMW. Unidentified lines are marked with a question mark. (Right panel) The finding chart ( $5' \times 5'$ ) retrieved from the Digitized Sky Survey highlighting the location of the optical source: WISE J072348.34+205130.8 (red circle)



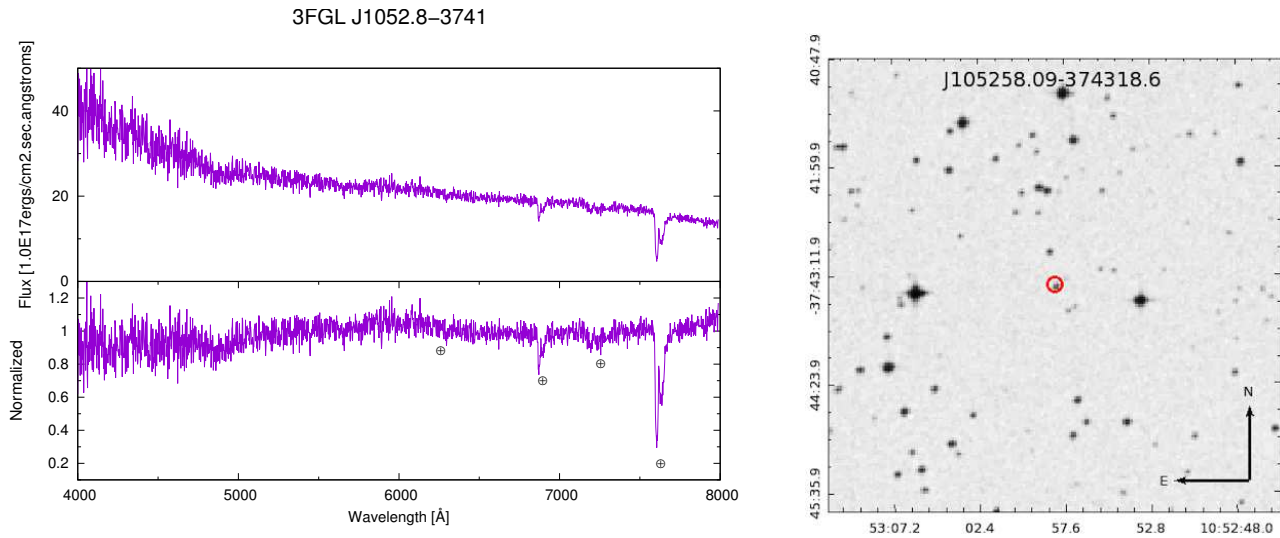
**Fig. 16** (Left panel) Top: Optical spectrum of WISE J074837.76+493041.0 associated with 3FGL J0748.8+4929. Bottom: The same spectrum, normalised to highlight features (if any). If present, telluric lines are marked with  $\oplus$ , and features due to contamination from diffuse interstellar bands are marked with DIB. If there are any doublets, these are marked with a d. The absorption line at  $\sim 5890\text{\AA}$  which is NaI from the Milky Way, is marked as NaIMW. Unidentified lines are marked with a question mark. (Right panel) The finding chart ( $5' \times 5'$ ) retrieved from the Digitized Sky Survey highlighting the location of the optical source: WISE J074837.76+493041.0 (red circle)



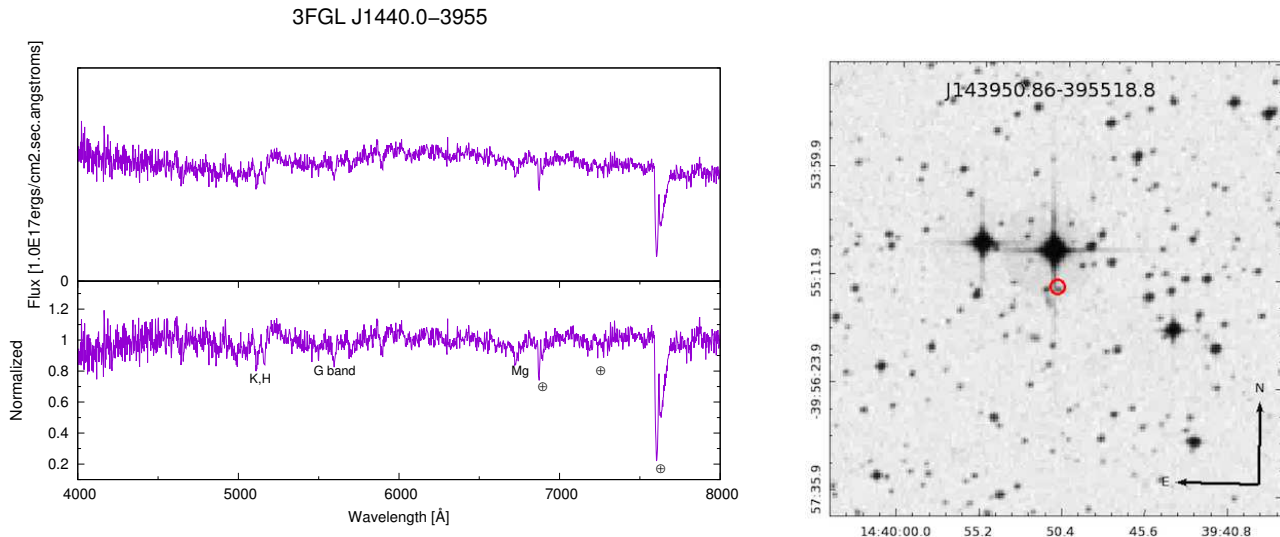
**Fig. 17** (Left panel) Top: Optical spectrum of WISE J092246.42-395935.0 associated with 3FGL J0922.8-3959. Bottom: The same spectrum, normalised to highlight features (if any). If present, telluric lines are marked with  $\oplus$ , and features due to contamination from diffuse interstellar bands are marked with DIB. If there are any doublets, these are marked with a d. The absorption line at  $\sim 5890\text{\AA}$  which is NaI from the Milky Way, is marked as NaIMW. Unidentified lines are marked with a question mark. (Right panel) The finding chart ( $5' \times 5'$ ) retrieved from the Digitized Sky Survey highlighting the location of the optical source: WISE J092246.42-395935.0 (red circle)



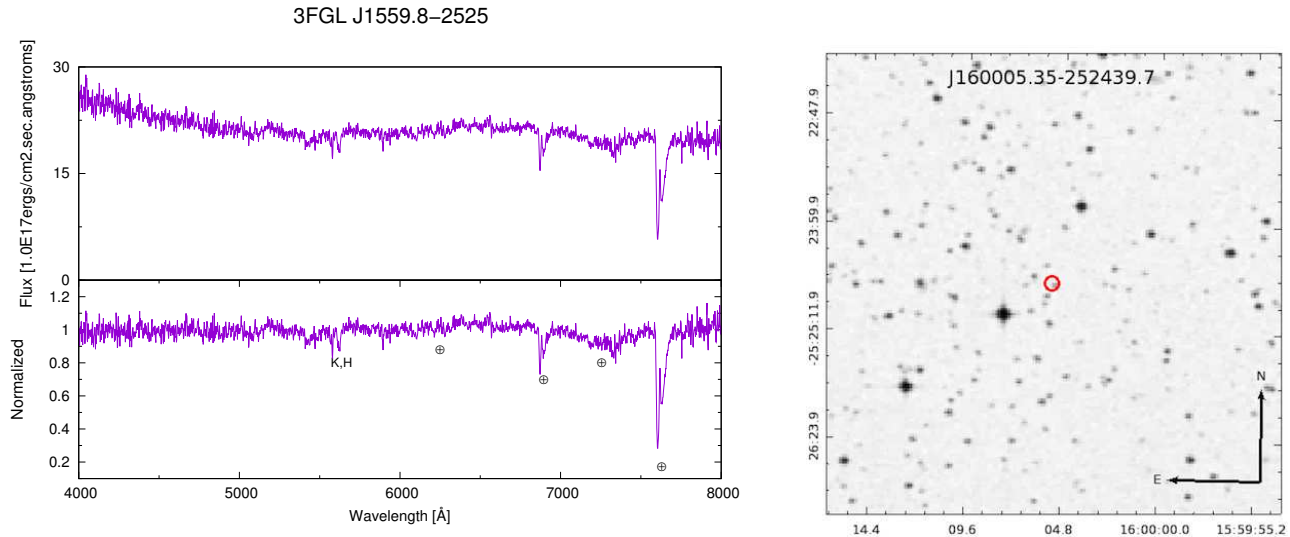
**Fig. 18** (Left panel) Top: Optical spectrum of WISE J095249.57+071330.1 associated with 3FGL J0952.8+0711. Bottom: The same spectrum, normalised to highlight features (if any). If present, telluric lines are marked with  $\oplus$ , and features due to contamination from diffuse interstellar bands are marked with DIB. If there are any doublets, these are marked with a d. The absorption line at  $\sim 5890\text{\AA}$  which is NaI from the Milky Way, is marked as NaIMW. Unidentified lines are marked with a question mark. (Right panel) The finding chart ( $5' \times 5'$ ) retrieved from the Digitized Sky Survey highlighting the location of the optical source: WISE J095249.57+071330.1 (red circle)



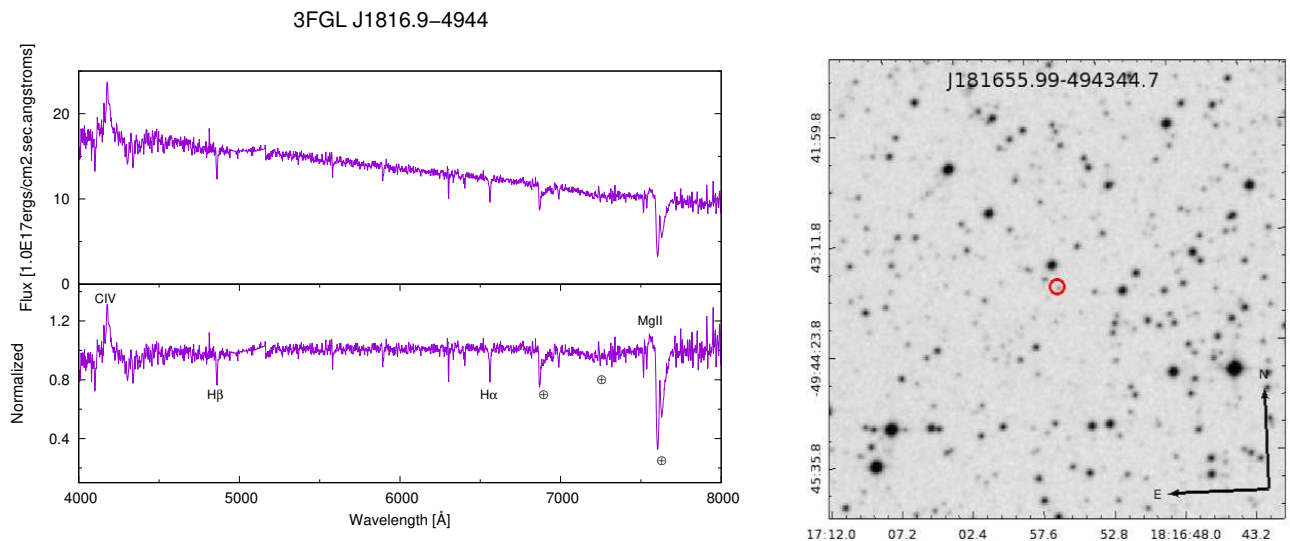
**Fig. 19** (Left panel) Top: Optical spectrum of WISE J105258.09-374318.6 associated with 3FGL J1052.8-3741. Bottom: The same spectrum, normalised to highlight features (if any). If present, telluric lines are marked with  $\oplus$ , and features due to contamination from diffuse interstellar bands are marked with DIB. If there are any doublets, these are marked with a d. The absorption line at  $\sim 5890\text{\AA}$  which is NaI from the Milky Way, is marked as NaIMW. Unidentified lines are marked with a question mark. (Right panel) The finding chart ( $5' \times 5'$ ) retrieved from the Digitized Sky Survey highlighting the location of the optical source: WISE J105258.09-374318.6 (red circle)



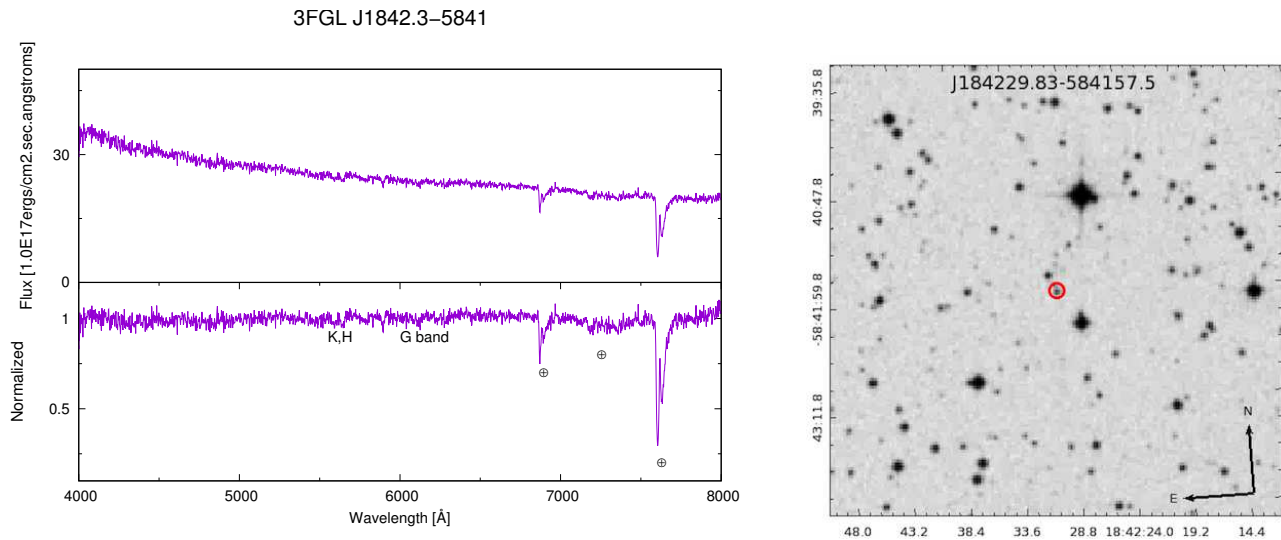
**Fig. 20** (Left panel) Top: Optical spectrum of WISE J143950.86-395518.8 associated with 3FGL J1440.0-3955. Bottom: The same spectrum, normalised to highlight features (if any). If present, telluric lines are marked with  $\oplus$ , and features due to contamination from diffuse interstellar bands are marked with DIB. If there are any doublets, these are marked with a d. The absorption line at  $\sim 5890\text{\AA}$  which is NaI from the Milky Way, is marked as NaIMW. Unidentified lines are marked with a question mark. (Right panel) The finding chart ( $5' \times 5'$ ) retrieved from the Digitized Sky Survey highlighting the location of the optical source: WISE J143950.86-395518.8 (red circle)



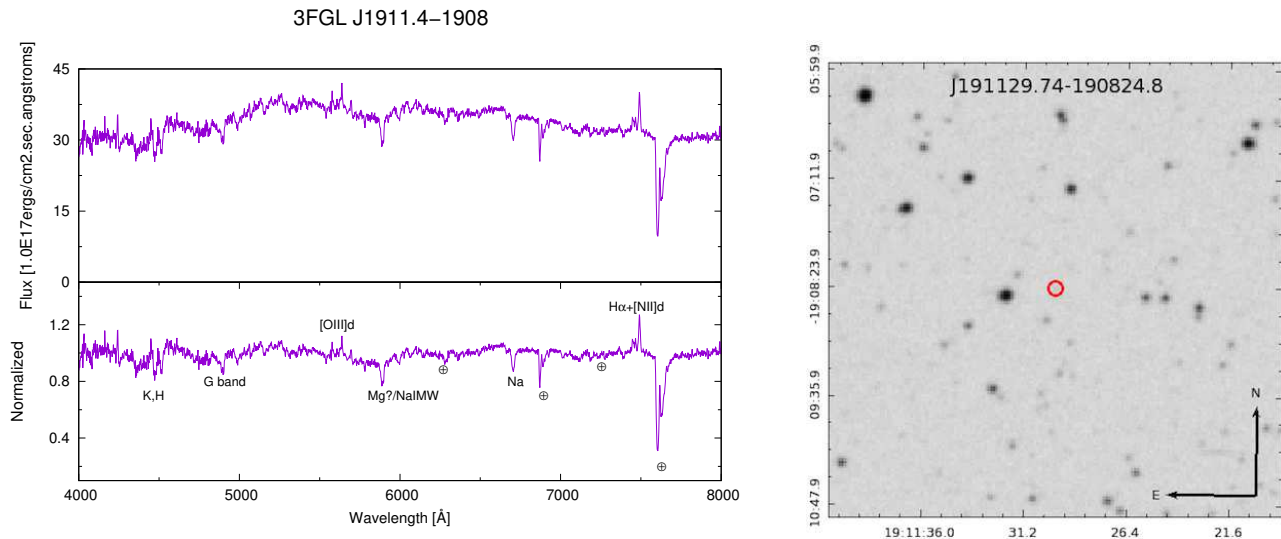
**Fig. 21** (Left panel) Top: Optical spectrum of WISE J160005.35-252439.7 associated with 3FGL J1559.8-2525. Bottom: The same spectrum, normalised to highlight features (if any). If present, telluric lines are marked with  $\oplus$ , and features due to contamination from diffuse interstellar bands are marked with DIB. If there are any doublets, these are marked with a d. The absorption line at  $\sim 5890\text{\AA}$  which is NaI from the Milky Way, is marked as NaIMW. Unidentified lines are marked with a question mark. (Right panel) The finding chart ( $5' \times 5'$ ) retrieved from the Digitized Sky Survey highlighting the location of the optical source: WISE J160005.35-252439.7 (red circle)



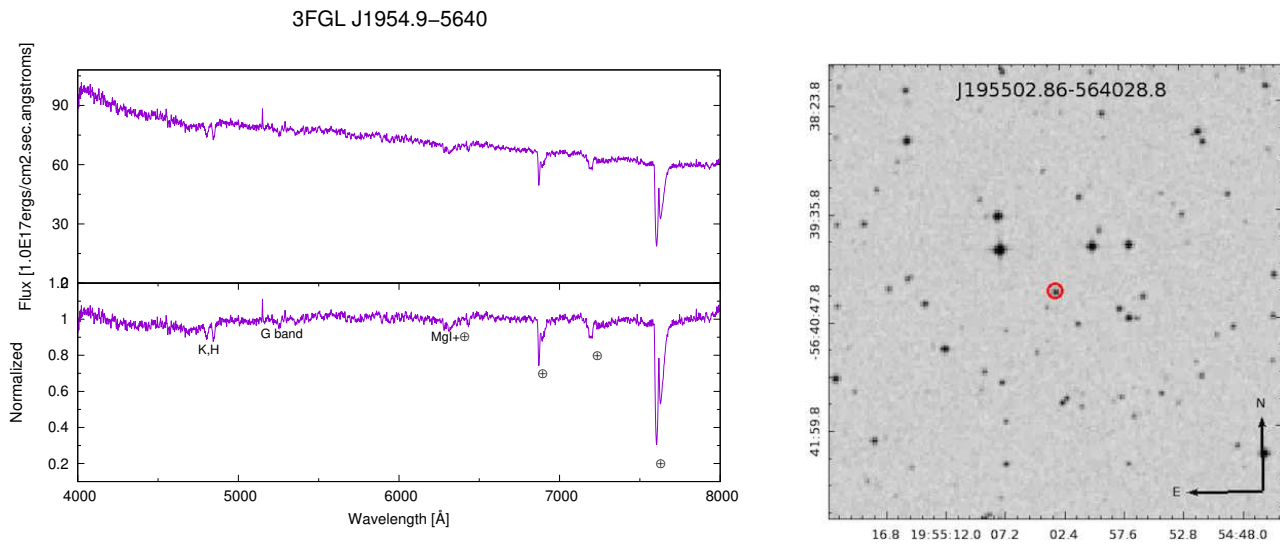
**Fig. 22** (Left panel) Top: Optical spectrum of WISE J181655.99-494344.7 associated with 3FGL J1816.9-4944. Bottom: The same spectrum, normalised to highlight features (if any). If present, telluric lines are marked with  $\oplus$ , and features due to contamination from diffuse interstellar bands are marked with DIB. If there are any doublets, these are marked with a d. The absorption line at  $\sim 5890\text{\AA}$  which is NaI from the Milky Way, is marked as NaIMW. Unidentified lines are marked with a question mark. (Right panel) The finding chart ( $5' \times 5'$ ) retrieved from the Digitized Sky Survey highlighting the location of the optical source: WISE J181655.99-494344.7 (red circle). It is worth mentioning there are Balmer lines at  $z = 0$  due to an interloping star



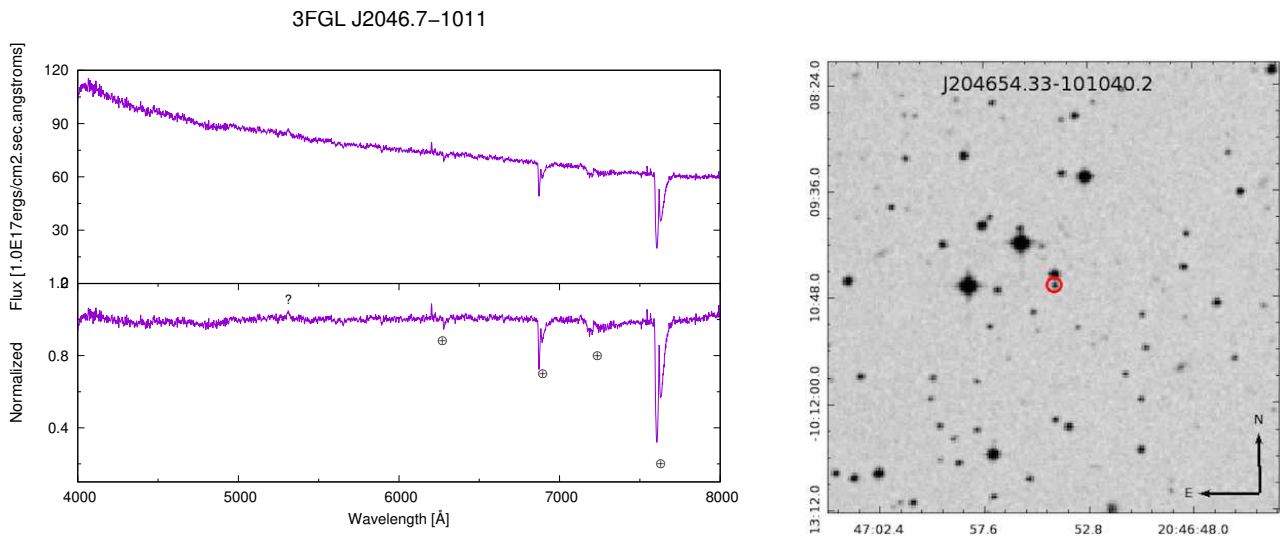
**Fig. 23** (Left panel) Top: Optical spectrum of WISE J184229.83-584157.5 associated with 3FGL J1842.3-5841. Bottom: The same spectrum, normalised to highlight features (if any). If present, telluric lines are marked with  $\oplus$ , and features due to contamination from diffuse interstellar bands are marked with DIB. If there are any doublets, these are marked with a d. The absorption line at  $\sim 5890\text{\AA}$  which is NaI from the Milky Way, is marked as NaIMW. Unidentified lines are marked with a question mark. (Right panel) The finding chart ( $5' \times 5'$ ) retrieved from the Digitized Sky Survey highlighting the location of the optical source: WISE J184229.83-584157.5 (red circle)



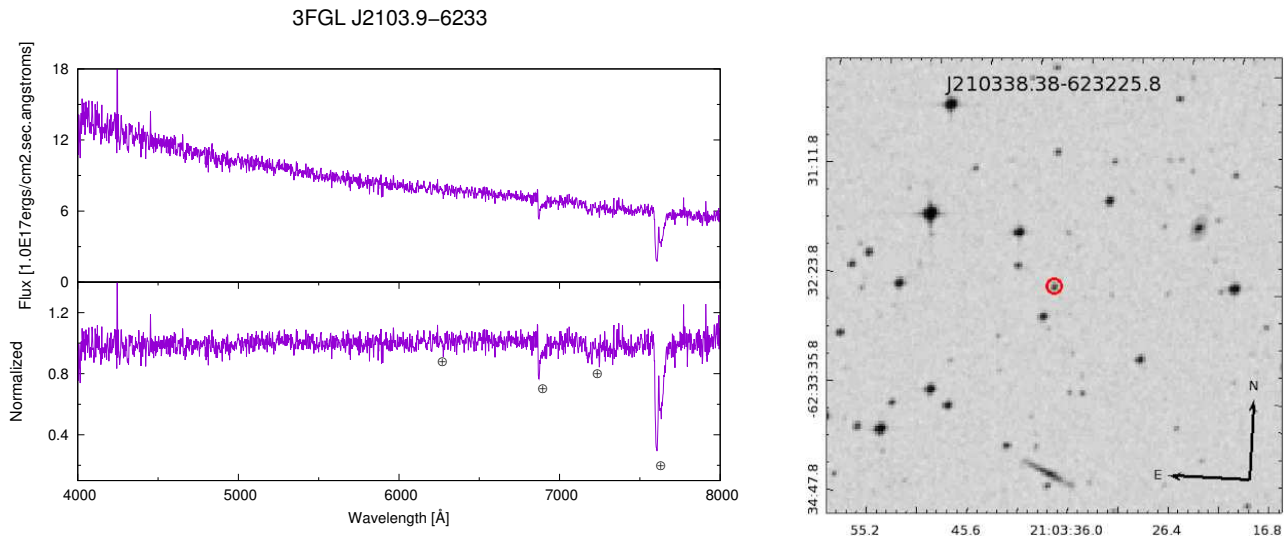
**Fig. 24** (Left panel) Top: Optical spectrum of WISE J191129.74-190824.8 associated with 3FGL J1911.4-1908. Bottom: The same spectrum, normalised to highlight features (if any). If present, telluric lines are marked with  $\oplus$ , and features due to contamination from diffuse interstellar bands are marked with DIB. If there are any doublets, these are marked with a d. The absorption line at  $\sim 5890\text{\AA}$  which is NaI from the Milky Way, is marked as NaIMW. Unidentified lines are marked with a question mark. (Right panel) The finding chart ( $5' \times 5'$ ) retrieved from the Digitized Sky Survey highlighting the location of the optical source: WISE J191129.74-190824.8 (red circle)



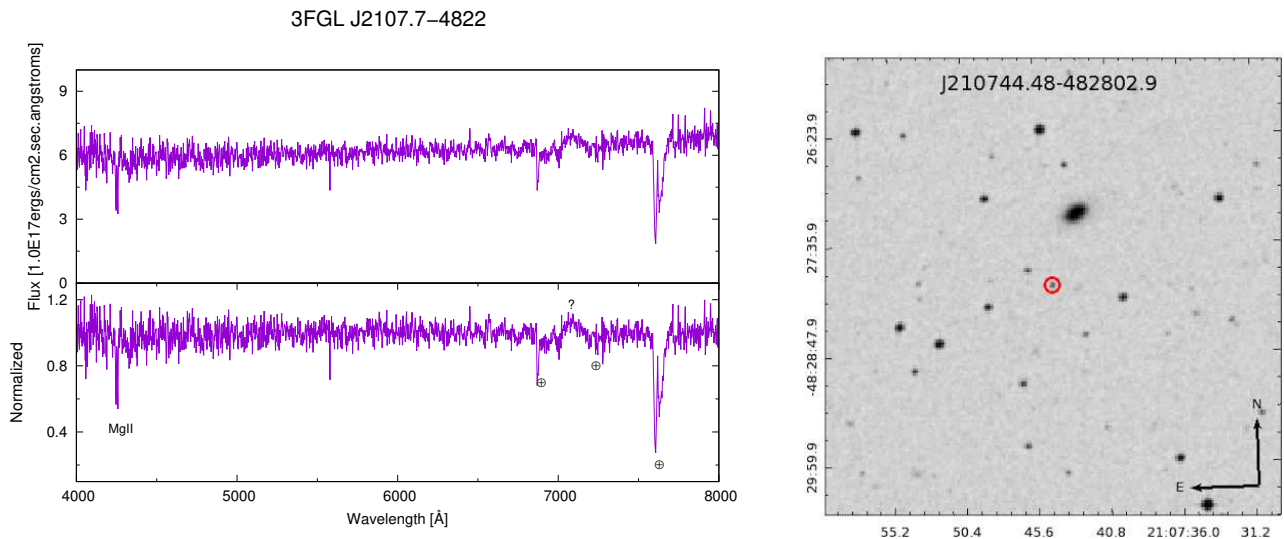
**Fig. 25** (Left panel) Top: Optical spectrum of WISE J195502.86-564028.8 associated with 3FGL J1954.9-5640. Bottom: The same spectrum, normalised to highlight features (if any). If present, telluric lines are marked with  $\oplus$ , and features due to contamination from diffuse interstellar bands are marked with DIB. If there are any doublets, these are marked with a d. The absorption line at  $\sim 5890\text{\AA}$  which is NaI from the Milky Way, is marked as NaIMW. Unidentified lines are marked with a question mark. (Right panel) The finding chart ( $5' \times 5'$ ) retrieved from the Digitized Sky Survey highlighting the location of the optical source: WISE J195502.86-564028.8 (red circle)



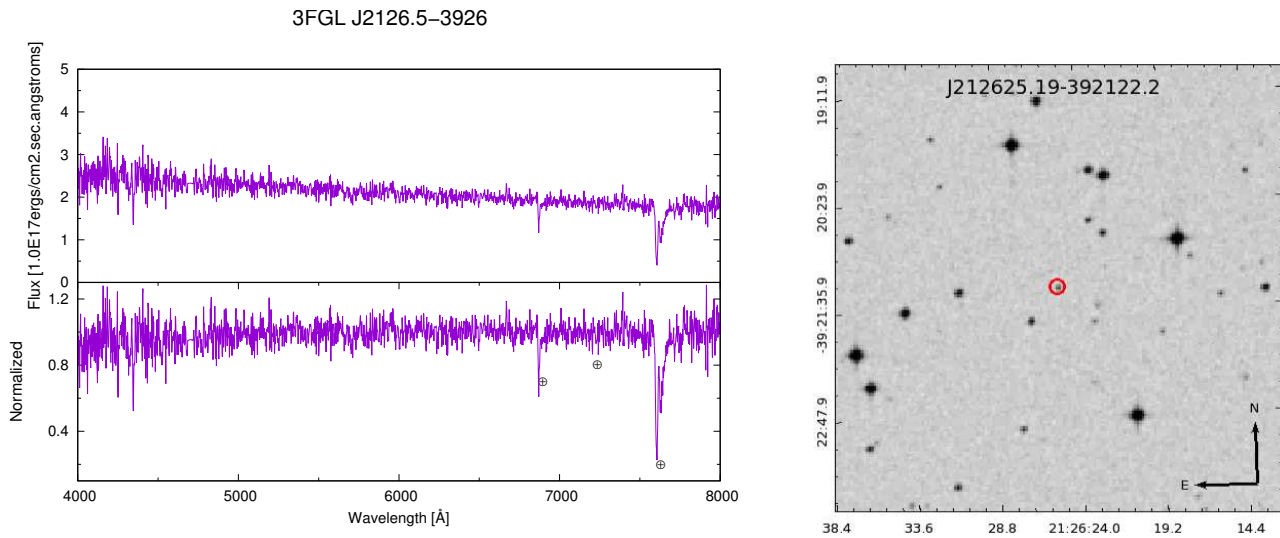
**Fig. 26** (Left panel) Top: Optical spectrum of WISE J204654.33-101040.2 associated with 3FGL J2046.7-1011. Bottom: The same spectrum, normalised to highlight features (if any). If present, telluric lines are marked with  $\oplus$ , and features due to contamination from diffuse interstellar bands are marked with DIB. If there are any doublets, these are marked with a d. The absorption line at  $\sim 5890\text{\AA}$  which is NaI from the Milky Way, is marked as NaIMW. Unidentified lines are marked with a question mark. (Right panel) The finding chart ( $5' \times 5'$ ) retrieved from the Digitized Sky Survey highlighting the location of the optical source: WISE J204654.33-101040.2 (red circle)



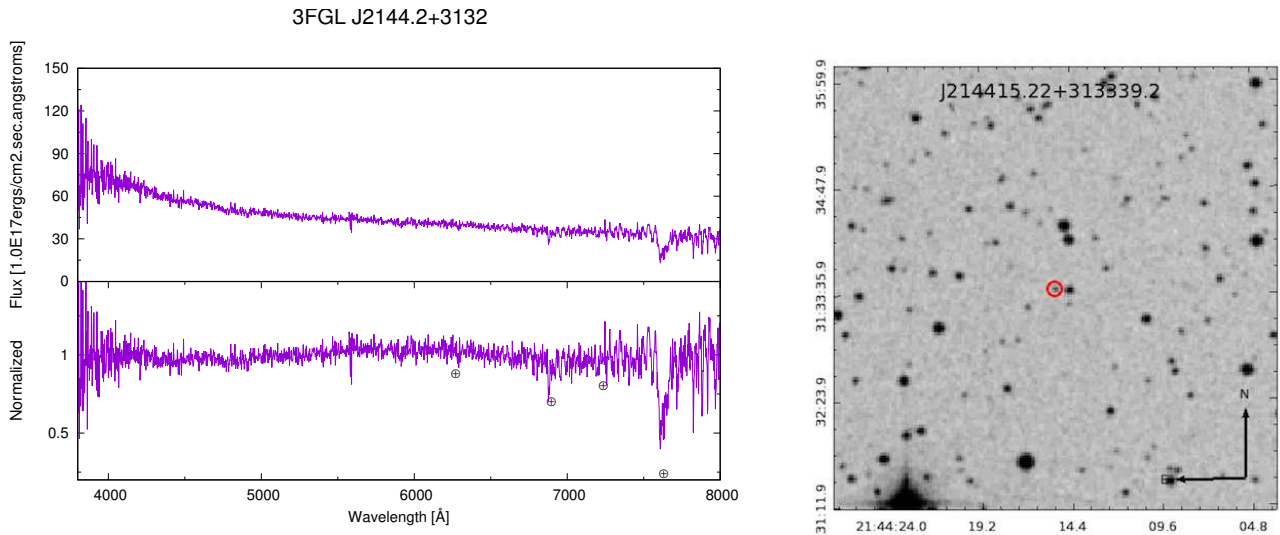
**Fig. 27** (Left panel) Top: Optical spectrum of WISE J210338.38-623225.8 associated with 3FGL J2103.9-6233. Bottom: The same spectrum, normalised to highlight features (if any). If present, telluric lines are marked with  $\oplus$ , and features due to contamination from diffuse interstellar bands are marked with DIB. If there are any doublets, these are marked with a d. The absorption line at  $\sim 5890\text{\AA}$  which is NaI from the Milky Way, is marked as NaIMW. Unidentified lines are marked with a question mark. (Right panel) The finding chart ( $5' \times 5'$ ) retrieved from the Digitized Sky Survey highlighting the location of the optical source: WISE J210338.38-623225.8 (red circle)



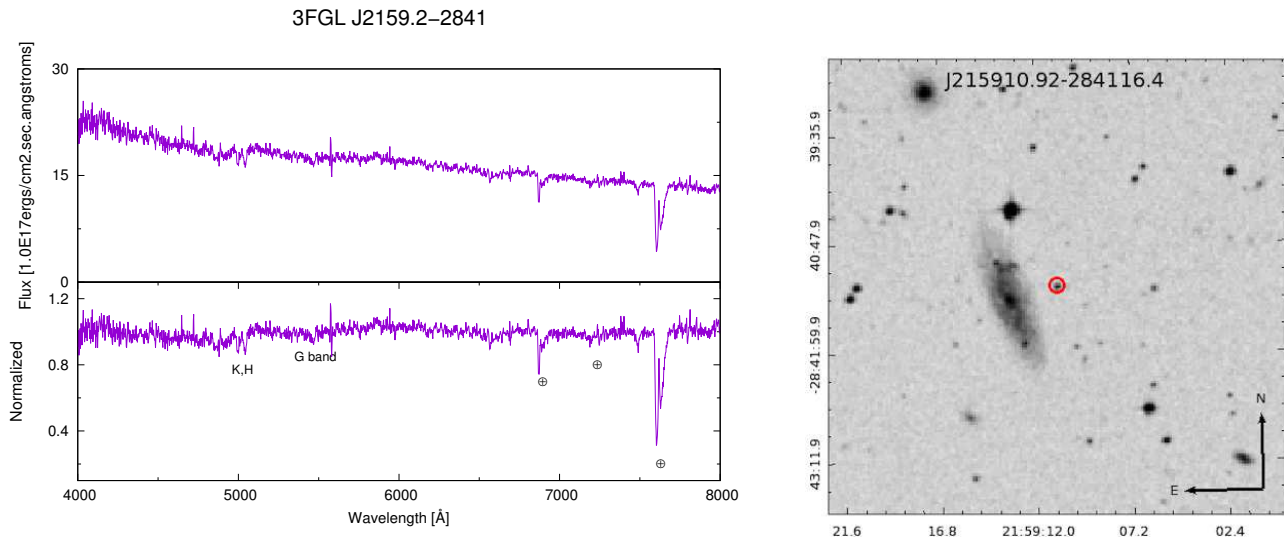
**Fig. 28** (Left panel) Top: Optical spectrum of WISE J210744.48-482802.9 associated with 3FGL J2107.7-4822. Bottom: The same spectrum, normalised to highlight features (if any). If present, telluric lines are marked with  $\oplus$ , and features due to contamination from diffuse interstellar bands are marked with DIB. If there are any doublets, these are marked with a d. The absorption line at  $\sim 5890\text{\AA}$  which is NaI from the Milky Way, is marked as NaIMW. Unidentified lines are marked with a question mark. (Right panel) The finding chart ( $5' \times 5'$ ) retrieved from the Digitized Sky Survey highlighting the location of the optical source: WISE J210744.48-482802.9 (red circle)



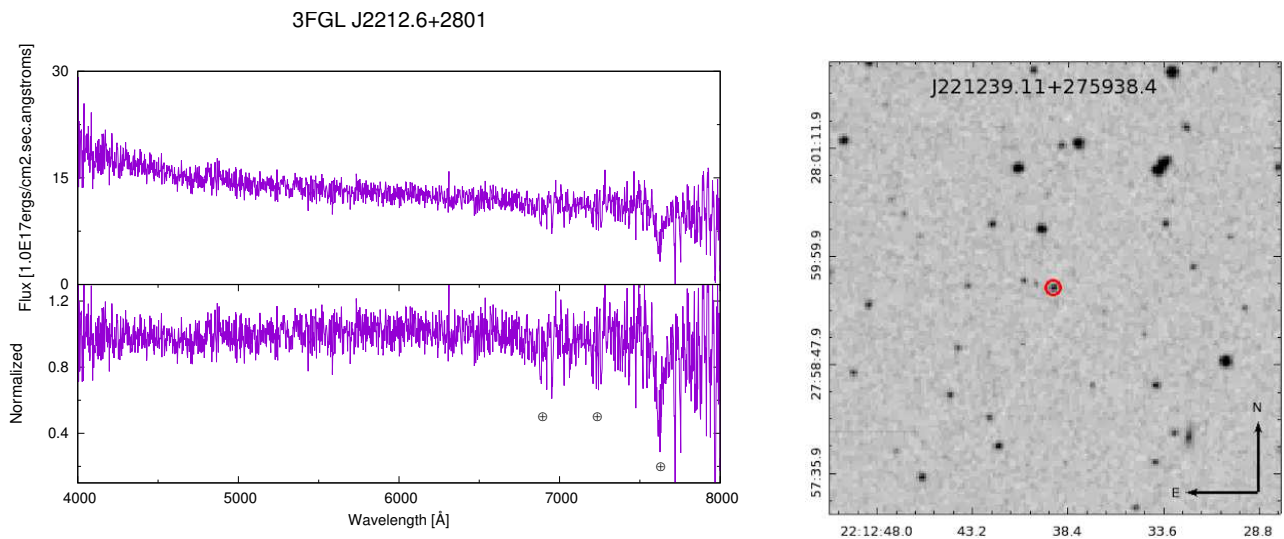
**Fig. 29** (Left panel) Top: Optical spectrum of WISE J212625.19-392122.2 associated with 3FGL J2126.5-3926. Bottom: The same spectrum, normalised to highlight features (if any). If present, telluric lines are marked with  $\oplus$ , and features due to contamination from diffuse interstellar bands are marked with DIB. If there are any doublets, these are marked with a d. The absorption line at  $\sim 5890\text{\AA}$  which is NaI from the Milky Way, is marked as NaIMW. Unidentified lines are marked with a question mark. (Right panel) The finding chart ( $5' \times 5'$ ) retrieved from the Digitized Sky Survey highlighting the location of the optical source: WISE J212625.19-392122.2 (red circle)



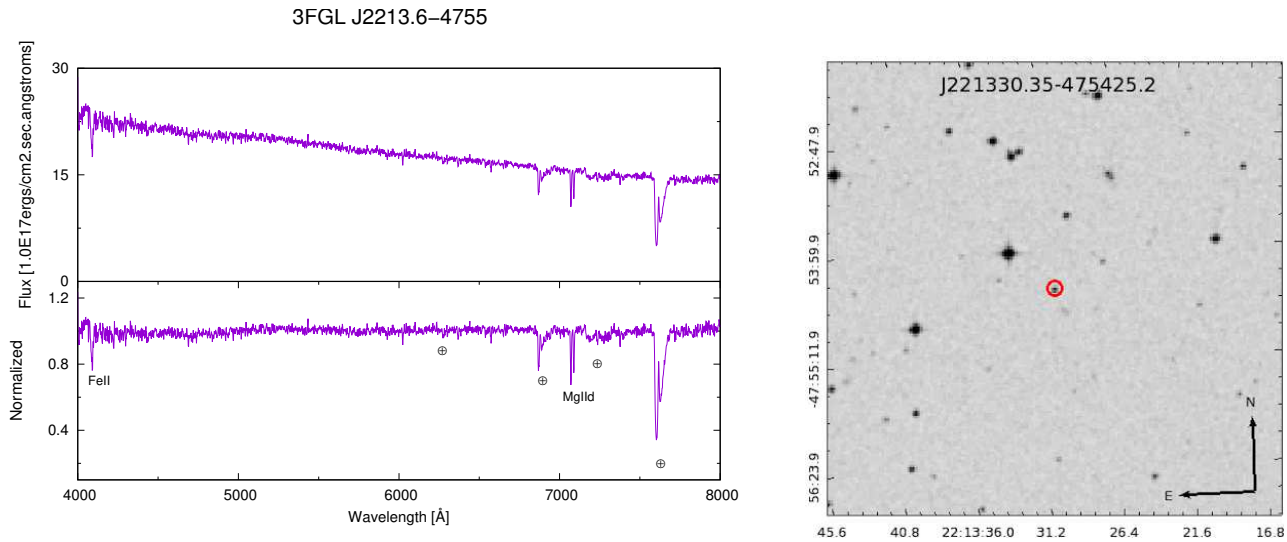
**Fig. 30** (Left panel) Top: Optical spectrum of WISE J214415.22+313339.2 associated with 3FGL J2144.2+3132. Bottom: The same spectrum, normalised to highlight features (if any). If present, telluric lines are marked with  $\oplus$ , and features due to contamination from diffuse interstellar bands are marked with DIB. If there are any doublets, these are marked with a d. The absorption line at  $\sim 5890\text{\AA}$  which is NaI from the Milky Way, is marked as NaIMW. Unidentified lines are marked with a question mark. (Right panel) The finding chart ( $5' \times 5'$ ) retrieved from the Digitized Sky Survey highlighting the location of the optical source: WISE J214415.22+313339.2 (red circle)



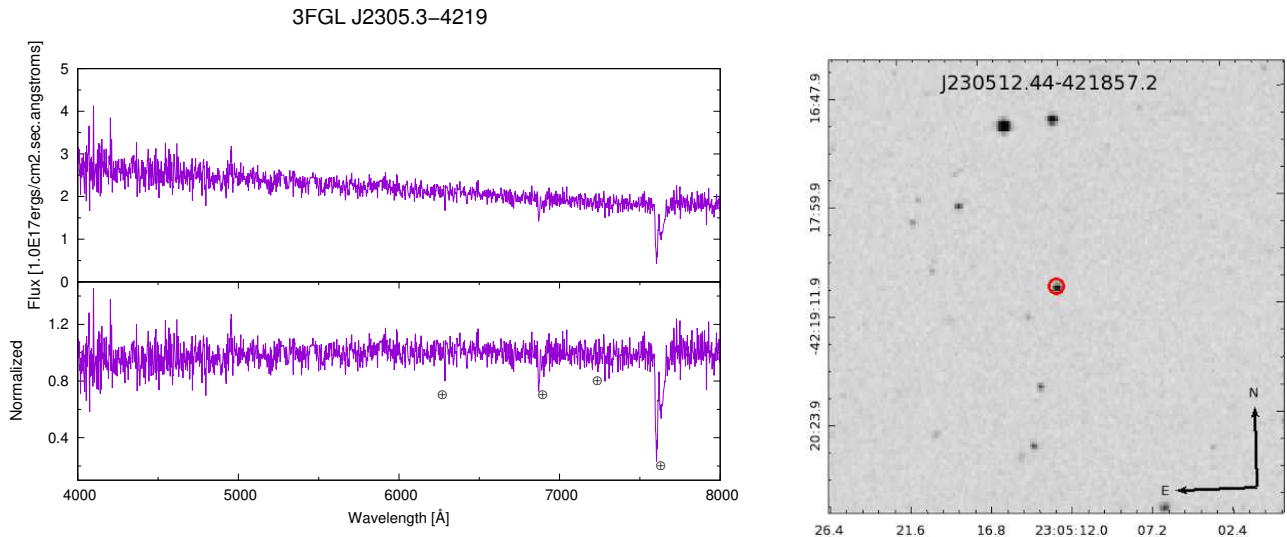
**Fig. 31** (Left panel) Top: Optical spectrum of WISE J215910.92-284116.4 associated with 3FGL J2159.2-2841. Bottom: The same spectrum, normalised to highlight features (if any). If present, telluric lines are marked with  $\oplus$ , and features due to contamination from diffuse interstellar bands are marked with DIB. If there are any doublets, these are marked with a d. The absorption line at  $\sim 5890\text{\AA}$  which is NaI from the Milky Way, is marked as NaIMW. Unidentified lines are marked with a question mark. (Right panel) The finding chart ( $5' \times 5'$ ) retrieved from the Digitized Sky Survey highlighting the location of the optical source: WISE J215910.92-284116.4 (red circle)



**Fig. 32** (Left panel) Top: Optical spectrum of WISE J221239.1+275938.4 associated with 3FGL J2212.6+2801. Bottom: The same spectrum, normalised to highlight features (if any). If present, telluric lines are marked with  $\oplus$ , and features due to contamination from diffuse interstellar bands are marked with DIB. If there are any doublets, these are marked with a d. The absorption line at  $\sim 5890\text{\AA}$  which is NaI from the Milky Way, is marked as NaIMW. Unidentified lines are marked with a question mark. (Right panel) The finding chart ( $5' \times 5'$ ) retrieved from the Digitized Sky Survey highlighting the location of the optical source: WISE J221239.1+275938.4 (red circle)



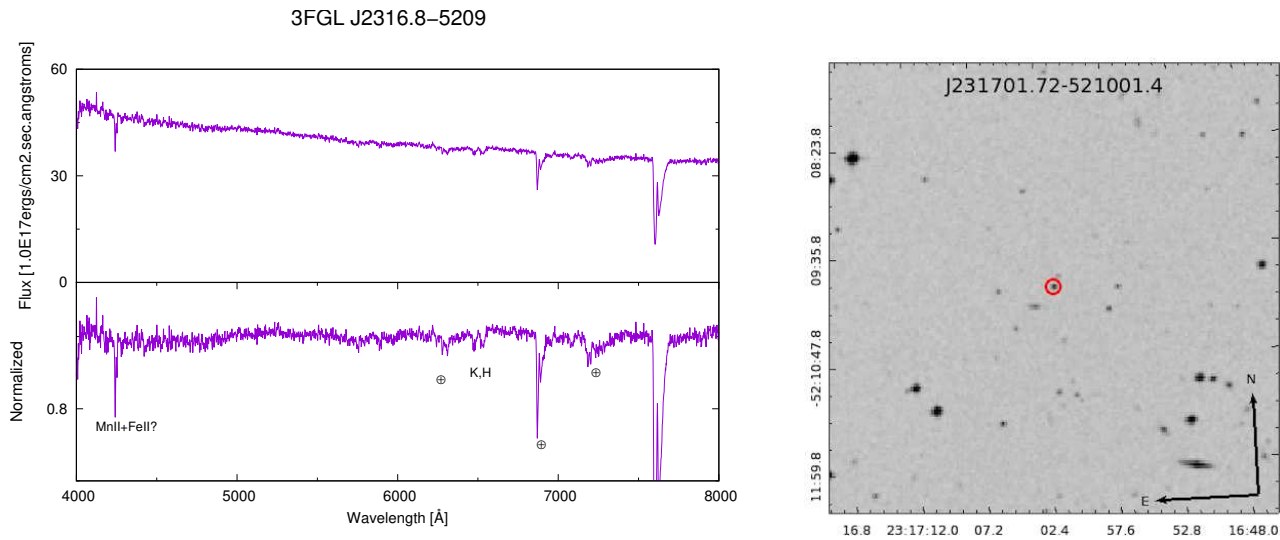
**Fig. 33** (Left panel) Top: Optical spectrum of WISE J221330.35-475425.2 associated with 3FGL J2213.6-4755. Bottom: The same spectrum, normalised to highlight features (if any). If present, telluric lines are marked with  $\oplus$ , and features due to contamination from diffuse interstellar bands are marked with DIB. If there are any doublets, these are marked with a d. The absorption line at  $\sim 5890\text{\AA}$  which is NaI from the Milky Way, is marked as NaIMW. Unidentified lines are marked with a question mark. (Right panel) The finding chart ( $5' \times 5'$ ) retrieved from the Digitized Sky Survey highlighting the location of the optical source: WISE J221330.35-475425.2 (red circle)



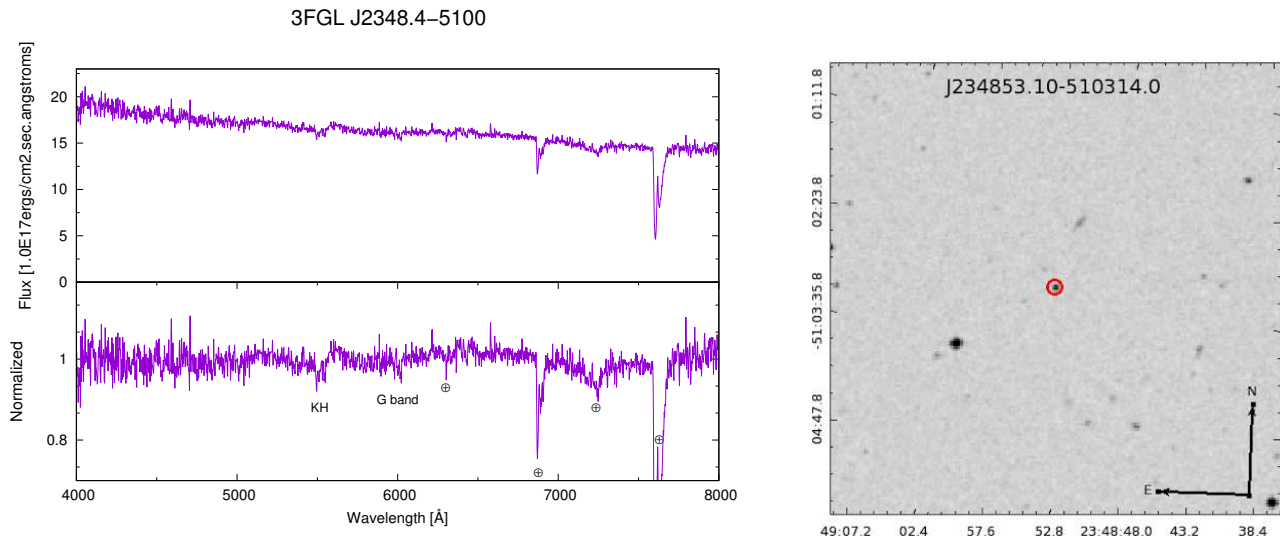
**Fig. 34** (Left panel) Top: Optical spectrum of WISE J230512.44-421857.2 associated with 3FGL 2305.3-4219. Bottom: The same spectrum, normalised to highlight features (if any). If present, telluric lines are marked with  $\oplus$ , and features due to contamination from diffuse interstellar bands are marked with DIB. If there are any doublets, these are marked with a d. The absorption line at  $\sim 5890\text{\AA}$  which is NaI from the Milky Way, is marked as NaIMW. Unidentified lines are marked with a question mark. (Right panel) The finding chart ( $5' \times 5'$ ) retrieved from the Digitized Sky Survey highlighting the location of the optical source: WISE J230512.44-421857.2 (red circle)

---

**Acknowledgements** This work is supported by the "Departments of Excellence 2018 - 2022" Grant awarded by the Italian Ministry of Education, University and Research (MIUR) (L. 232/2016). This research has made use of resources provided by the Compagnia di San Paolo for the grant awarded on the BLENV project (S1618.L1.MASF\_01) and by the Ministry of Education, Universities and Research for the grant MASF\_FFABR\_17\_01. E. J. M. acknowledges the financial contribution from the Universidad Nacional de La Plata - Ay. Mov. Doctorandos 2018. F. M. acknowledges financial contribution from the agreement ASI-INAF n.2017-14-H.0. A. P. acknowledges financial support from the Consorzio Interuniversitario per la fisica Spaziale (CIFS) under the agreement related to the grant MASF\_CONTR\_FIN\_18\_02. F. R. acknowledges the support from FONDECYT Postdoctorado 3180506 and CONICYT project Basal AFB-170002. E. J. B. acknowledges support from Programa de Apoyo a Proyectos de Investigación e Innovación Tecnológica (IN109217).



**Fig. 35** (Left panel) Top: Optical spectrum of WISE J231701.72-521001.4 associated with 3FGL J2316.8-5209. Bottom: The same spectrum, normalised to highlight features (if any). If present, telluric lines are marked with  $\oplus$ , and features due to contamination from diffuse interstellar bands are marked with DIB. If there are any doublets, these are marked with a d. The absorption line at  $\sim 5890\text{\AA}$  which is NaI from the Milky Way, is marked as NaIMW. Unidentified lines are marked with a question mark. (Right panel) The finding chart ( $5' \times 5'$ ) retrieved from the Digitized Sky Survey highlighting the location of the optical source: WISE J231701.72-521001.4 (red circle)



**Fig. 36** (Left panel) Top: Optical spectrum of WISE J234853.10-510314.0 associated with 3FGL J2348.4-5100. Bottom: The same spectrum, normalised to highlight features (if any). If present, telluric lines are marked with  $\oplus$ , and features due to contamination from diffuse interstellar bands are marked with DIB. If there are any doublets, these are marked with a d. The absorption line at  $\sim 5890\text{\AA}$  which is NaI from the Milky Way, is marked as NaIMW. Unidentified lines are marked with a question mark. (Right panel) Unidentified lines are marked with a question mark. The finding chart ( $5' \times 5'$ ) retrieved from the Digitized Sky Survey highlighting the location of the optical source: WISE J234853.10-510314.0 (red circle)

---

## References

- Abdo, A. A., Ackermann M., Ajello, M. et al. 2010, *ApJ* 715, 429  
Abdo, A. A., Ackermann M., Ajello, M. et al. 2010 *ApJS*, 188, 405  
Abdo, A. A., Ajello, M., Allafort, A. et al. 2013 *ApJS*, 208 17  
Acero, F., Donato, D., Ojha, R. et al. 2013 *ApJ*, 779, 133  
Acero, F., Ackermann M., Ajello, M. et al. 2015 *ApJS*, 218, 23  
Ackermann, M., Ajello, M., Allafort, A. et al. 2011, *ApJ* 743, 171  
Ackermann, M., Ajello, M., Atwood, W. B. et al. 2015 *ApJ*, 810, 14  
Ajello, M., Romani, R. W.; Gasparrini, D., et al. 2014 *ApJ*, 780, 73  
Alvarez Crespo, N., Massaro, F., D’Abrusco, R. et al. 2016a *ApSS*, 361, 316  
Alvarez Crespo, N., Masetti, N., Landoni, M. et al. 2016b *AJ*, 151, 32  
Alvarez Crespo, N., Massaro, F., Milisavljevic, D. et al. 2016c *AJ*, 151, 95  
Andruchow, I., Romero, G. E., Cellone, S. A. et al. 2005, *A&A*, 442, 97  
Angelakis, E., Hovatta, T.; Blinov, D. et al. 2016, *MNRAS* 463, 3365  
Arsioli, B., Fraga, B., Giommi, P. et al. 2015 *A&A*, 579A, 34  
Atwood, W. B., Abdo, A. A., Ackermann, M. et al. 2009 *ApJ*, 697, 2, 1071  
Berlin, A. & Hooper D. 2014 *PhRvD*, 89a6014  
Bernieri, E., Campana, R.; Massaro, E. et al. 2013 *A&A*, 551L, 5  
Blandford R. D. & Rees, M. J. 1978 *Proc. Pittsburgh Conference on BL Lac Objects*, 328  
Blinov, D., Pavlidou, V. et al. 2018, *MNRAS*, 474, 1296  
Campana, R., Massaro, E. Bernieri, E. et al. 2015 *Ap&SS*, 360, 65  
Campana, R., Massaro, E. Bernieri, E. et al. 2016 *Ap&SS*, 361, 185  
Campana, R., Maselli, A., Bernieri, E. et al. 2017 *MNRAS*, 465, 2784  
Cowperthwaite, P. S., Massaro, F., D’Abrusco, R. et al. 2013 *AJ*, 146, 110  
D’Abrusco, R., Massaro, F., Ajello, M. et al. 2012 *ApJ*, 748, 68  
D’Abrusco, R., Massaro, F., Paggi, A. et al. 2013 *ApJS*, 206, 12  
D’Abrusco, R., Massaro, F., Paggi, A. et al. 2014 *ApJS*, 215, 14  
Doert, M. & Errando, M. 2014, *ApJ*, 782, 41.  
Ghirlanda, G., Ghisellini, G., Tavecchio, F. et al. 2010 *MNRAS*, 407, 2, 791  
Giroletti, M., Massaro, F., D’Abrusco, R. et al. 2016 *A&A*, 588A, 141  
Hartman, R. C., Bertsch, D. L., Bloom, S. D. et al. 1999 *ApJSS*, 123, 79  
Jorstad, S. G., Marscher, A. P., Mattox, J. R. et al. 2001 *ApJ*, 556, 738  
Landi, R., Bassani, L., Stephen, J. B. et al. 2015 *A&A*, 581, A57  
Landoni, M., Massaro, F., Paggi, A. et al. 2015a *AJ*, 149, 163  
Landoni, M., Falomo, R., Treves, A. et al. 2015b *ApJ*, 150, 6, 181  
Landoni, M., Paiano, S., Falomo, R. et al. 2018 *ApJ*, 861, 2.  
Mahony, E. K., Sadler, E. M., Croom, S. M. et al. 2011 *MNRAS*, 417, 2651  
Marchesini, E. J., Masetti, N., Chavushyan, V. et al. 2016 *A&A* 596, A10  
Maselli, A., Massaro, F., D’Abrusco, R. et al. 2015 *Ap&SS*, 357, 141  
Masetti, N., Parisi, P., Palazzi, E. et al. 2010 *A&A* 519, A96  
Massaro, E., Giommi, P., Leto, C. et al. 2009 *A&A*, 495, 2, 691  
Massaro, E., Maselli, A., Leto, C. et al. 2015 *A&SS*, 357, 75  
Massaro, F., D’Abrusco, R., Ajello, M. et al. 2011 *ApJ*, 740L, 48  
Massaro, F., D’Abrusco, R., Tosti, G. et al. 2012a *ApJ*, 752, 61  
Massaro, F., D’Abrusco, R., Tosti, G. et al. 2012b *ApJ*. 750, 138  
Massaro, F., D’Abrusco, R., Paggi, A. et al. 2013a *ApJS*, 209, 10  
Massaro, F., D’Abrusco, R., Paggi, A. et al. 2013b *ApJS*, 206, 13  
Massaro, F., Giroletti, M., Paggi, A. et al. 2013c *ApJS*, 208, 15  
Massaro, F., Paggi, A., Errando, M. et al. 2013d *ApJS*, 207, 16  
Massaro, F., D’Abrusco, R., Giroletti, M. et al. 2013e *ApJS*, 207, 4  
Massaro, F., Masetti, N., D’Abrusco, R. et al. 2014 *AJ*, 148, 66  
Massaro, F., D’Abrusco, R., Landoni, M. et al. 2015a *ApJS*, 217, 2  
Massaro, F., Landoni, M., D’Abrusco, R. et al. 2015b *A&A*, 575A, 124  
Massaro, F., Thompson, D. J., Ferrara, E. C. 2016a *A&ARv*, 24, 2  
Massaro, F., lvarez Crespo, N., D’Abrusco, R. et al. 2016b *ApSS*, 361, 337  
Massaro, F. & D’Abrusco R. 2016, 827, 67  
Massaro, F., Marchesini, E. J., D’Abrusco, R. et al. 2017 *ApJ*, 834, 113  
Nori, M., Giroletti, M., Massaro, F. et al. 2014 *ApJS*, 212, 3  
Paggi, A., Massaro, F., D’Abrusco, R. et al. 2013 *ApJS*, 209, 9  
Paggi, A., Milisavljevic, D., Masetti, N. et al. 2014 *AJ*, 147, 112  
Paiano, S., Franceschini, A. & Stamerra, A., *MNRAS* 2017, 468, 4902.

- 
- Paiano, S., Landoni, M., Falomo, R. et al. 2017a ApJ, 837, 2, 144  
Paiano, S., Landoni, M., Falomo, R. et al. 2017b ApJ, 844, 2, 120  
Paiano, S., Falomo, R., Franceschini, A. et al. 2017c ApJ, 851, 2, 135  
Peña-Herazo, H. A., Marchesini, E. J., Álvarez Crespo, N. et al. 2017 Ap&SS, 362, 228  
Pittori, C., Verrecchia, F., Chen, A. W. et al. 2009 A&A, 506, 3  
Ricci, F., Massaro, F., Landoni, M. et al. 2015 AJ, 149, 160  
Rojas, A. F., Masetti, N., Minniti, D. et al. 2017 A&A 602, A124  
Sandrinelli, A., Treves, A., Falomo, R. et al. 2013 ApJ, 146, 6, 163  
Schlafly, E. F. & Finkbeiner, D. P. 2011 ApJ, 737, 103  
Stephen, J. B., Bassani, L., Landi, R. et al. 2010 MNRAS, 408, 1, 422  
Stickel, M., Padovani, P., Urry, C. M. et al. 1991 ApJ, 374, 431  
Takahashi, Y., Kataoka, J., Nakamori, T. et al. 2012 ApJ, 747, 64.  
Takeuchi, Y., Kataoka, J., Maeda, K. et al. 2013 ApJS, 208, 25.  
Urry, C. M. & Padovani, P. 1995 PASP, 107, 803  
van Dokkum, P. G. 2001 PASP, 113, 1420V.  
White, G. L., Jauncey, D. L., Savage, A. et al. 1988 ApJ, 327, 561.  
Wright, E. L., Eisenhardt, P. R. M, Mainzer, A. K. et al. 2010 AJ, 140, 1868  
Zechlin, H. & Horns, D. 2012 JCAP, 11, 050