



Publication Year	2024
Acceptance in OA	2025-02-26T10:35:59Z
Title	PDRs4All. II. JWST's NIR and MIR imaging view of the Orion Nebula
Authors	Habart, Emilie, Peeters, Els, Berné, Olivier, Trahin, Boris, Canin, Amélie, Chown, Ryan, Sidhu, Aameek, Van De Putte, Dries, Alarcón, Felipe, Schroetter, Ilane, Dartois, Emmanuel, Vicente, Sílvia, Abergel, Alain, Bergin, Edwin A., Bernard-Salas, Jeronimo, Boersma, Christiaan, Bron, Emeric, Cami, Jan, Cuadrado, Sara, Dicken, Daniel, Elyajouri, Meriem, Fuente, Asunción, Goicoechea, Javier R., Gordon, Karl D., Issa, Lina, Joblin, Christine, Kannavou, Olga, Khan, Baria, Lacinbala, Ozan, Languignon, David, Le Gal, Romane, Maragkoudakis, Alexandros, Meshaka, Raphael, Okada Yoko, Onaka, Takashi, Pasquini, Sofia, Pound, Marc W., Robberto, Massimo, Röllig, Markus, Schefter, Bethany, Schirmer, Thiébaud, Tabone, Benoit, Tielens, Alexander G. G. M., Wolfire, Mark G., Zannese, Marion, Ysard, Nathalie, Miville-Deschenes, Marc-Antoine, Aleman, Isabel, Allamandola, Louis, Auchetl, Rebecca, BARATTA, Giuseppe, Bejaoui, Salma, Bera, Partha P., Black, John H., Boulanger, Francois, Bouwman, Jordy, Brandl, Bernhard, Brechignac, Philippe, Brünken, Sandra, Buragohain, Mridusmita, Burkhardt, Andrew, Candian, Alessandra, CAZAUX, STEPHANIE, Cernicharo, Jose, Chabot, Marin, Chakraborty, Shubhadip, Champion, Jason, Colgan, Sean W. J., Cooke, Ilsa R., Coutens, Audrey, Cox, Nick L. J., Demyk, Karine, Meyer, Jennifer Donovan, Foschino, Sacha, García-Lario, Pedro, Gavilan, Lisseth, Gerin, Maryvonne, Gottlieb, Carl A., Guillard, Pierre, Gusdorf, Antoine, Hartigan, Patrick, He, Jinhua, Herbst, Eric, Hornekaer, Liv, Jäger, Cornelia, Janot-Pacheco, Eduardo, Kaufman, Michael, Kemper, Francisca, Kendrew, Sarah, Kirsanova, Maria S., Klaassen, Pamela, Kwok, Sun, Labiano, Álvaro, Lai, Thomas S. -Y., Lee, Timothy J., Lefloch, Bertrand, Le Petit, Franck, Li, Aigen, Linz, Hendrik, Mackie, Cameron J., Madden, Suzanne C., Mascetti, Joëlle, McGuire, Brett A., Merino, Pablo, Micelotta, Elisabetta R., Misselt, Karl, Morse, Jon A., MULAS, Giacomo, Neelamkodan, Naslim, Ohsawa, Ryou, Omont, Alain, Paladini, Roberta, PALUMBO, Maria Elisabetta, Pathak, Amit, Pendleton, Yvonne J., Petrigani, Annemieke, Pino, Thomas, Puga, Elena, Rangwala, Naseem, Rapacioli, Mathias, Ricca, Alessandra, Roman-Duval, Julia, Roser, Joseph, LACAS (IN ROUEFF), EVELYNE MARGUERITE LUCIE, Rouillé, Gaël, Salama, Farid, Sales, Dinalva A., Sandstrom, Karin, Sarre, Peter, Sciamma-O'Brien, Ella, Sellgren, Kris, Shenoy, Sachindev S., Teyssier, David, Thomas, Richard D., Togi, Aditya, Verstraete, Laurent, Witt, Adolf N., Wootten, Alwyn, Zettergren, Henning Zhang, Yong, Zhang, Ziwei E., Zhen, Junfeng
Publisher's version (DOI)	10.1051/0004-6361/202346747
Handle	http://hdl.handle.net/20.500.12386/36248

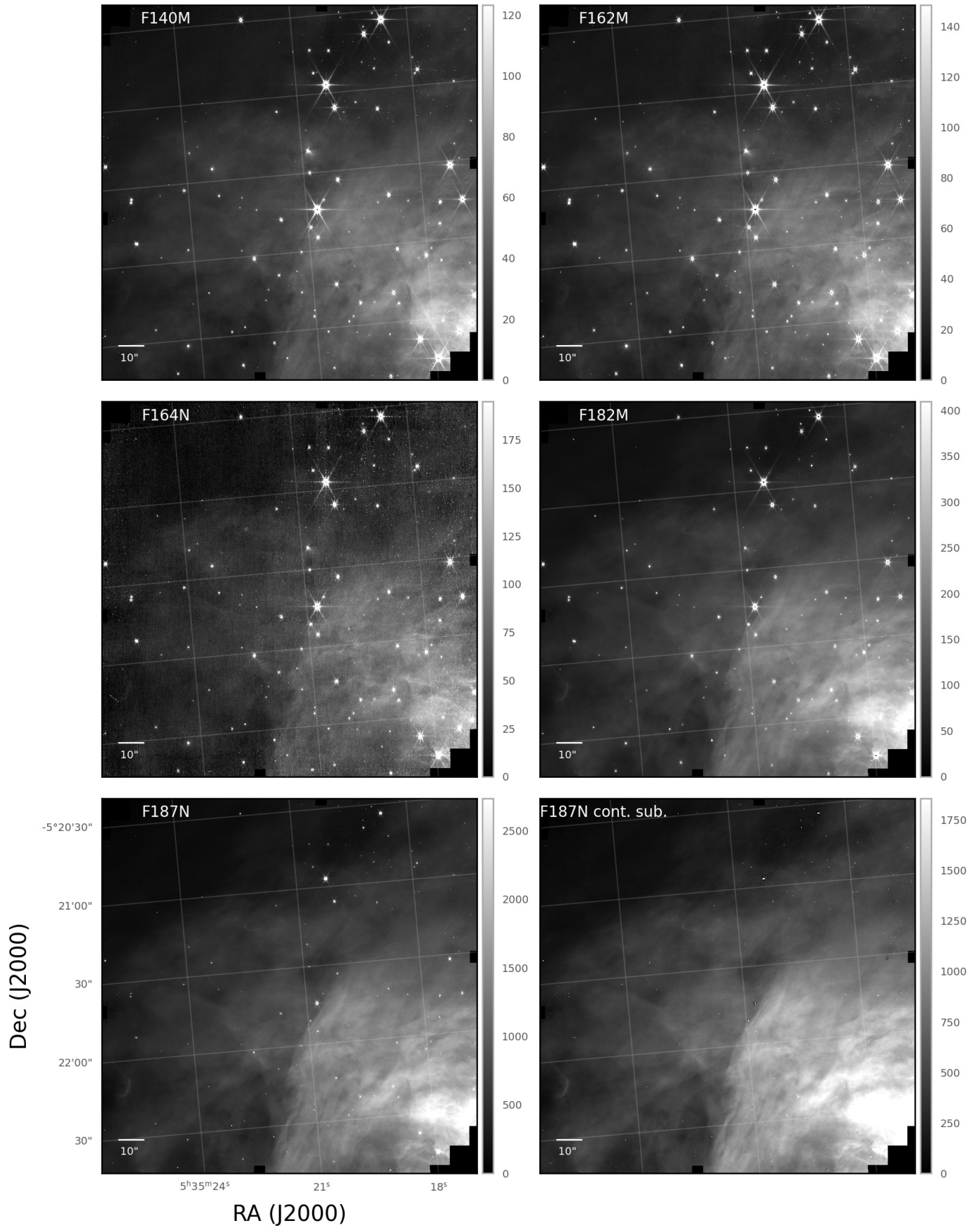


Fig. C.5. NIRCcam maps of the North region of the Orion Nebula in different filters. Units are in MJy/sr.

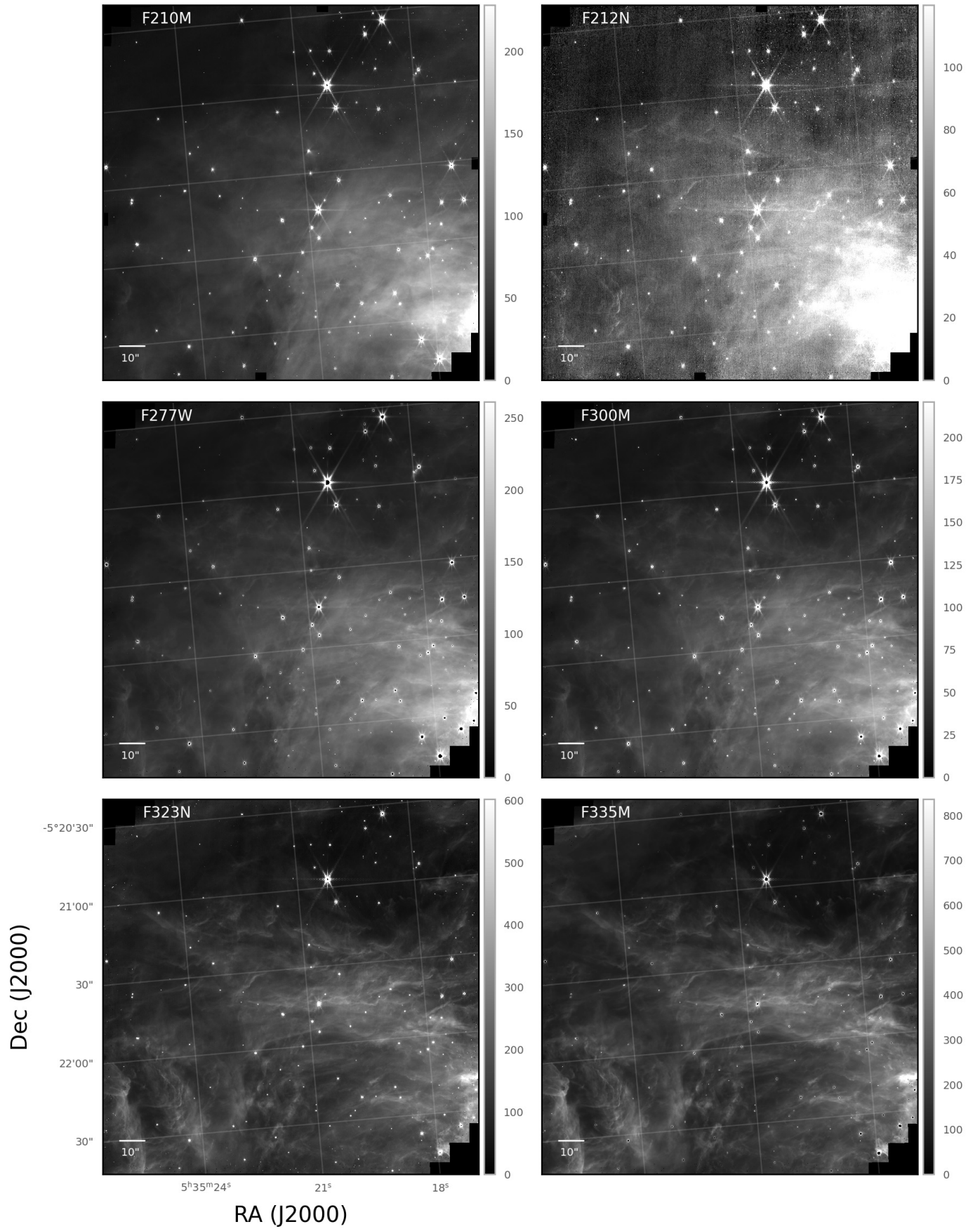


Fig. C.6. Same as in Fig. C.5, but for other filters.

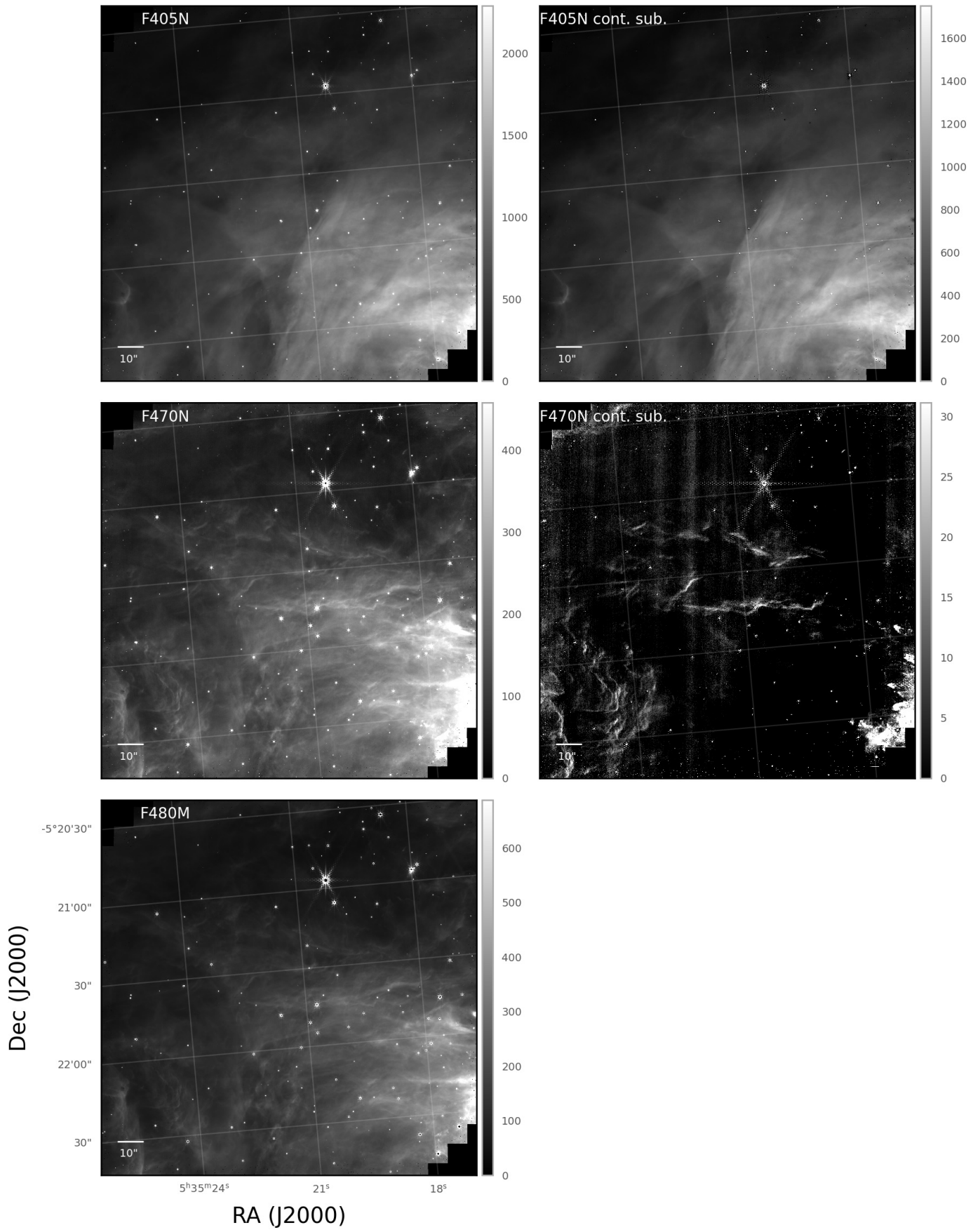


Fig. C.7. Same as in Fig. C.5, but for other filters.

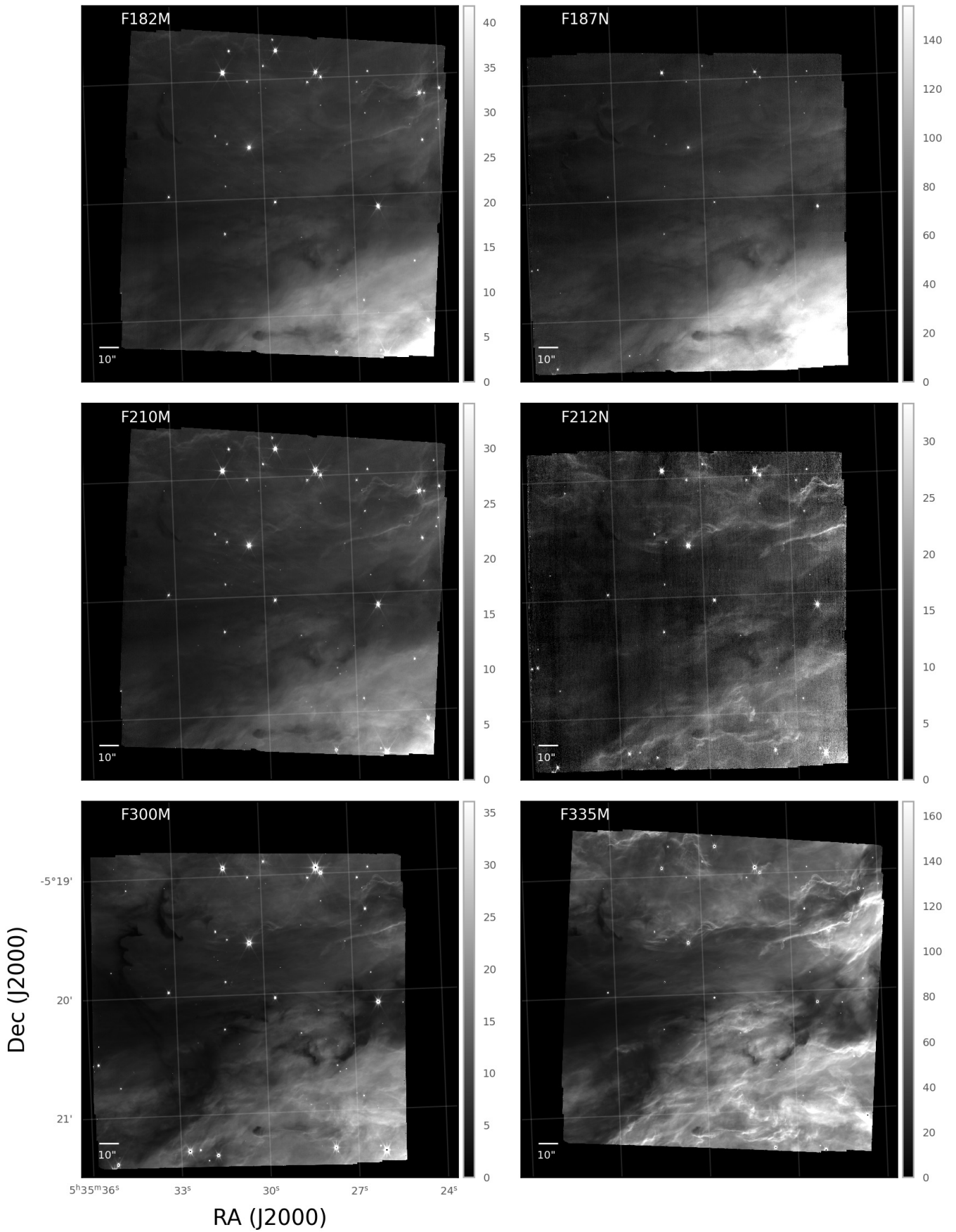


Fig. C.8. NIRC2 maps of the M43 South region in different filters. Units are in MJy/sr.

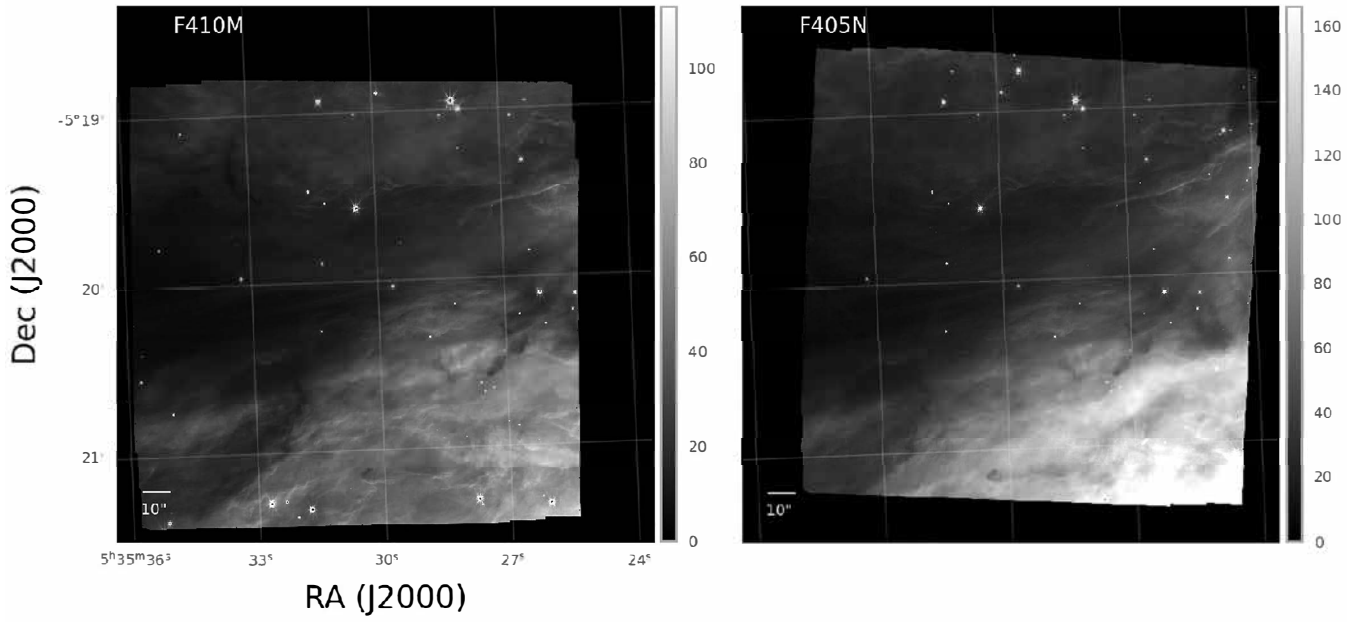


Fig. C.9. Same as in Fig. C.8, but for other filters.

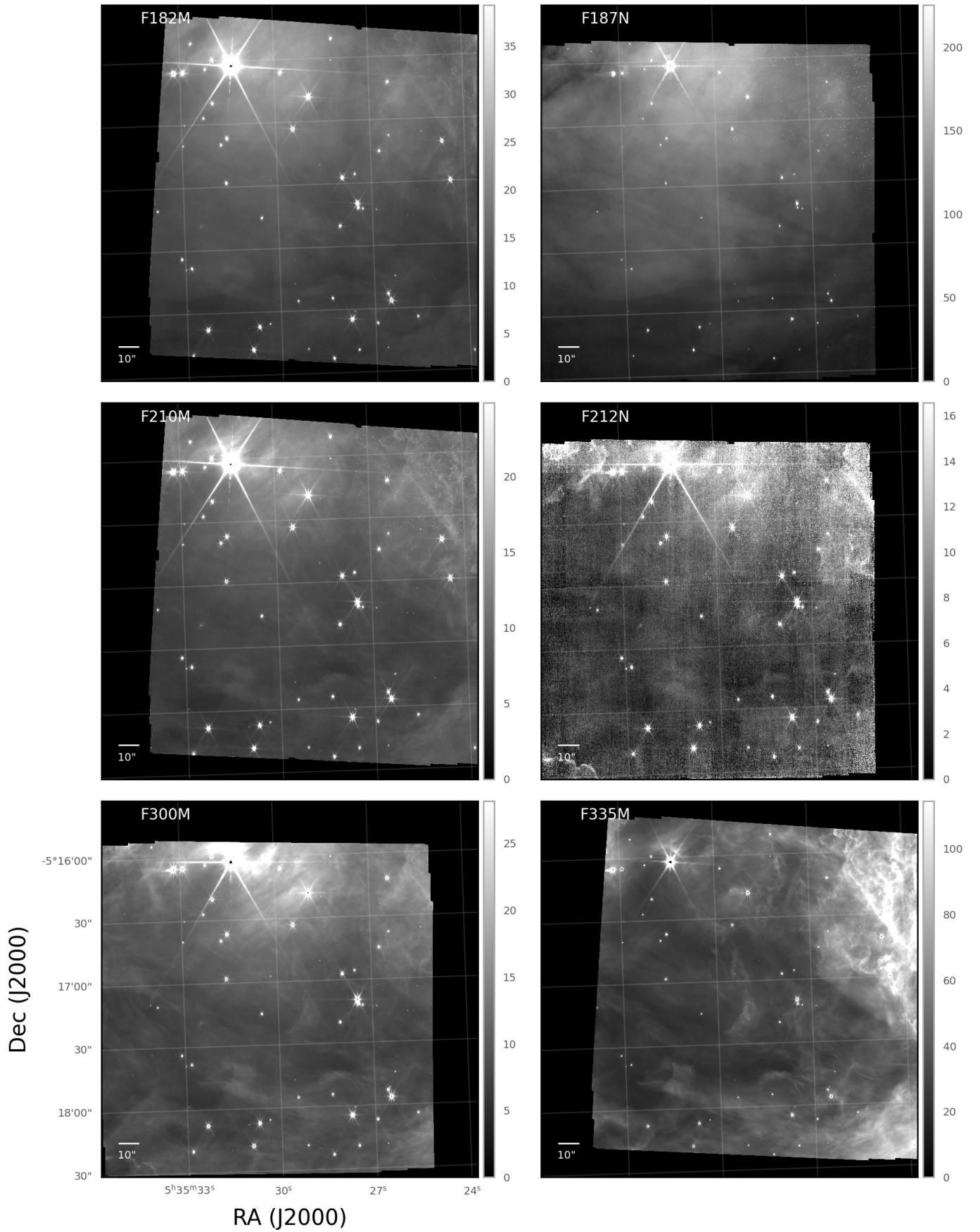


Fig. C.10. NIRCcam maps of the M43 center region in different filters. Units are in MJy/sr.

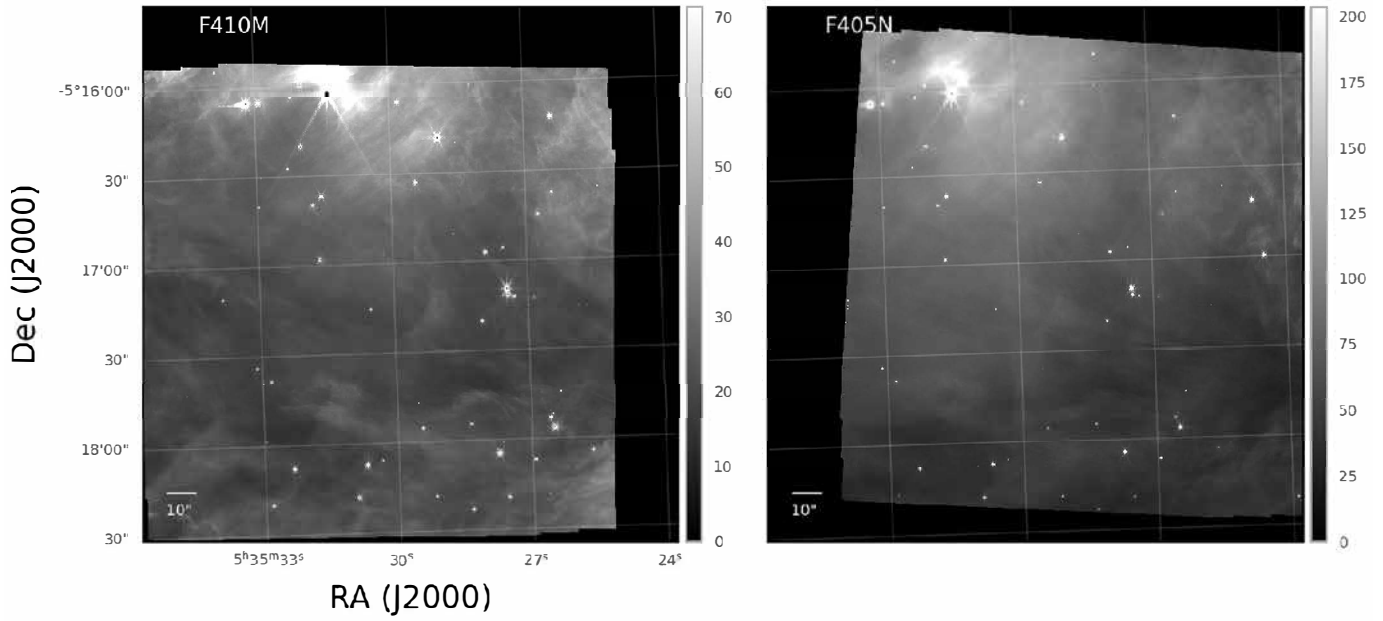


Fig. C.11. Same as in Fig. C.10, but for other filters.

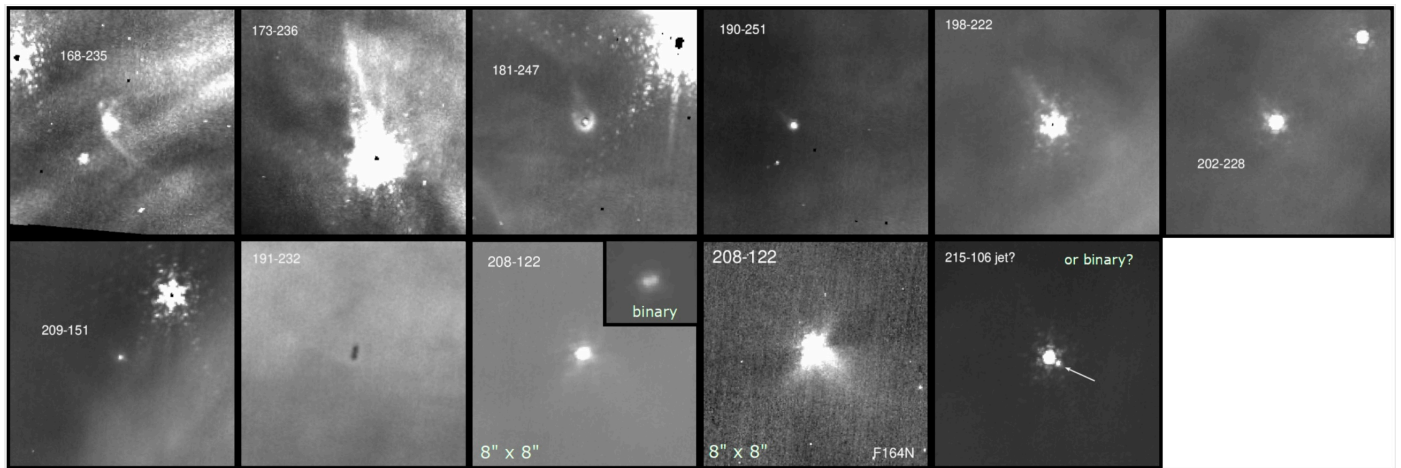


Fig. C.12. Zoom on the proplyds with extended structure identified in the F187N NIRCcam image of the M42 north-east region (module A). The tiles are $5'' \times 5''$, with exception of the object 208-122 for which tiles are $8'' \times 8''$, with north is up and east to the left. Some images suffer from instrumental effects such as the diffraction pattern from bright stars and uncorrected cosmic ray events, affecting particularly the edge of the images because of lack of redundancy.

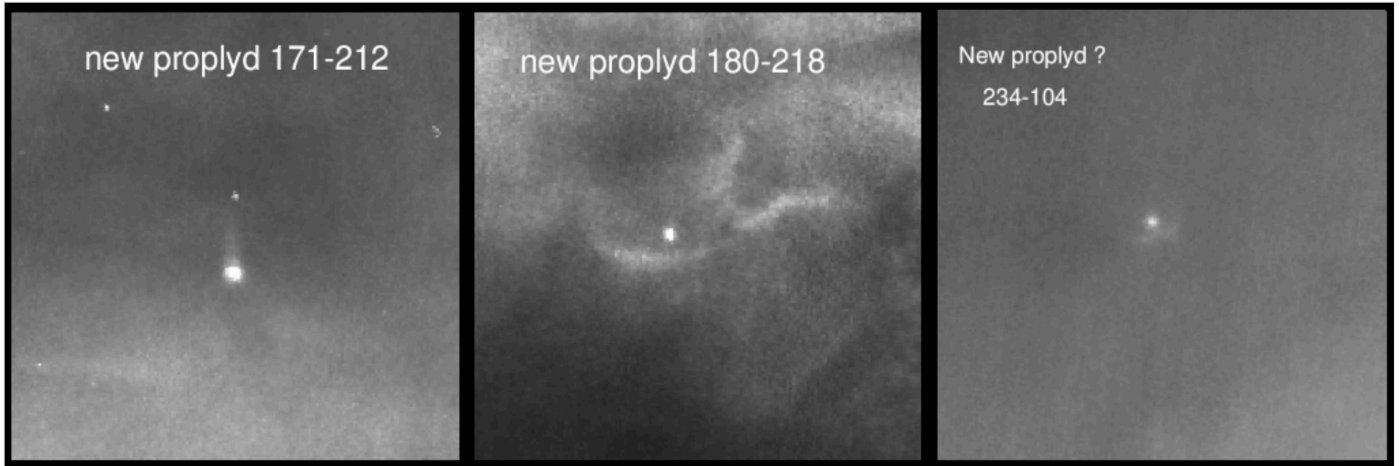


Fig. C.13. Zoom on the 3 new bright proplyds identified in the F187N NIRCcam image north-east of the Trapezium stars (module A): 171-212, 180-218 and 234-104. They have faint cusps and only one shows a tail in Pa α , that is proplyd 171-212. The tiles are 5'' \times 5'' with north up and east to the left.

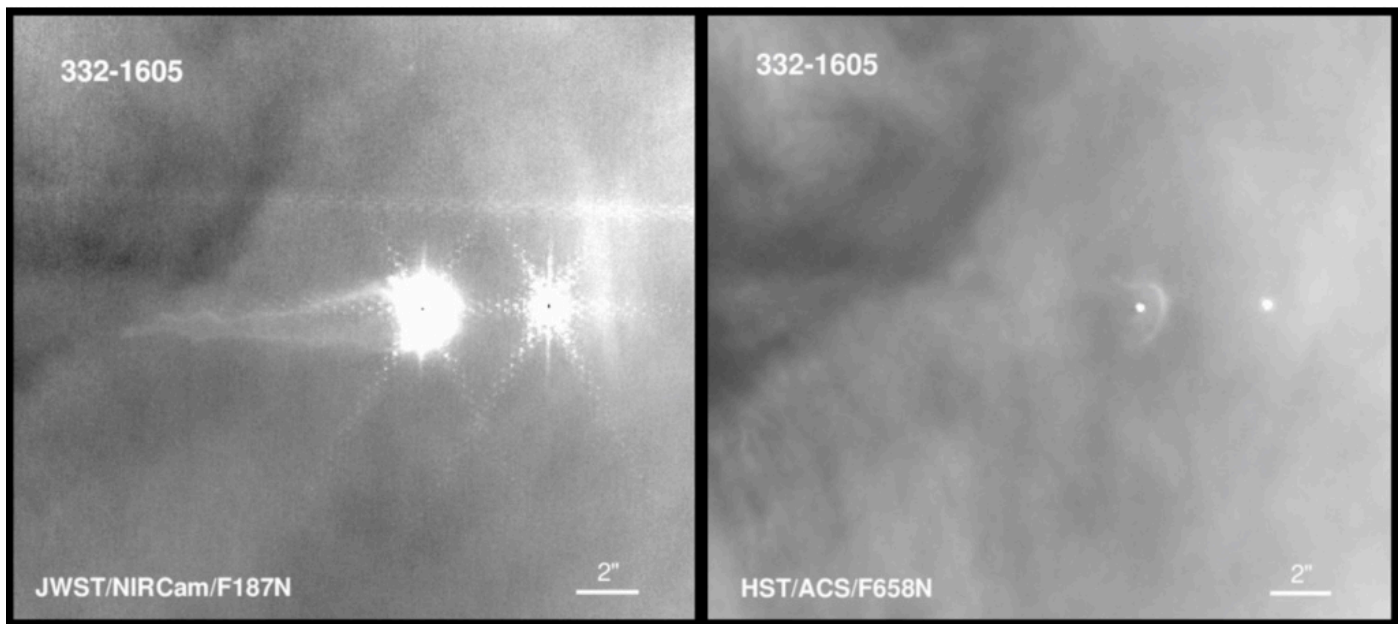


Fig. C.14. Zoom on the giant proplyd 332-1605 found in M43 (module A) and pointing directly to the ionizing star NU Ori, just 27'' to the west and not visible in the images. This object shows a long tail in Pa α that is nearly 10 times larger than proplyd HST10. The H α HST/ACS image of this object does not show any tail but only a faint cusp. The NIRCcam F187N (left) and HST F1658N (right) images have similar spatial resolution allowing for a direct comparison of proplyd morphology in the optical and near-IR. North is up and east to the left.

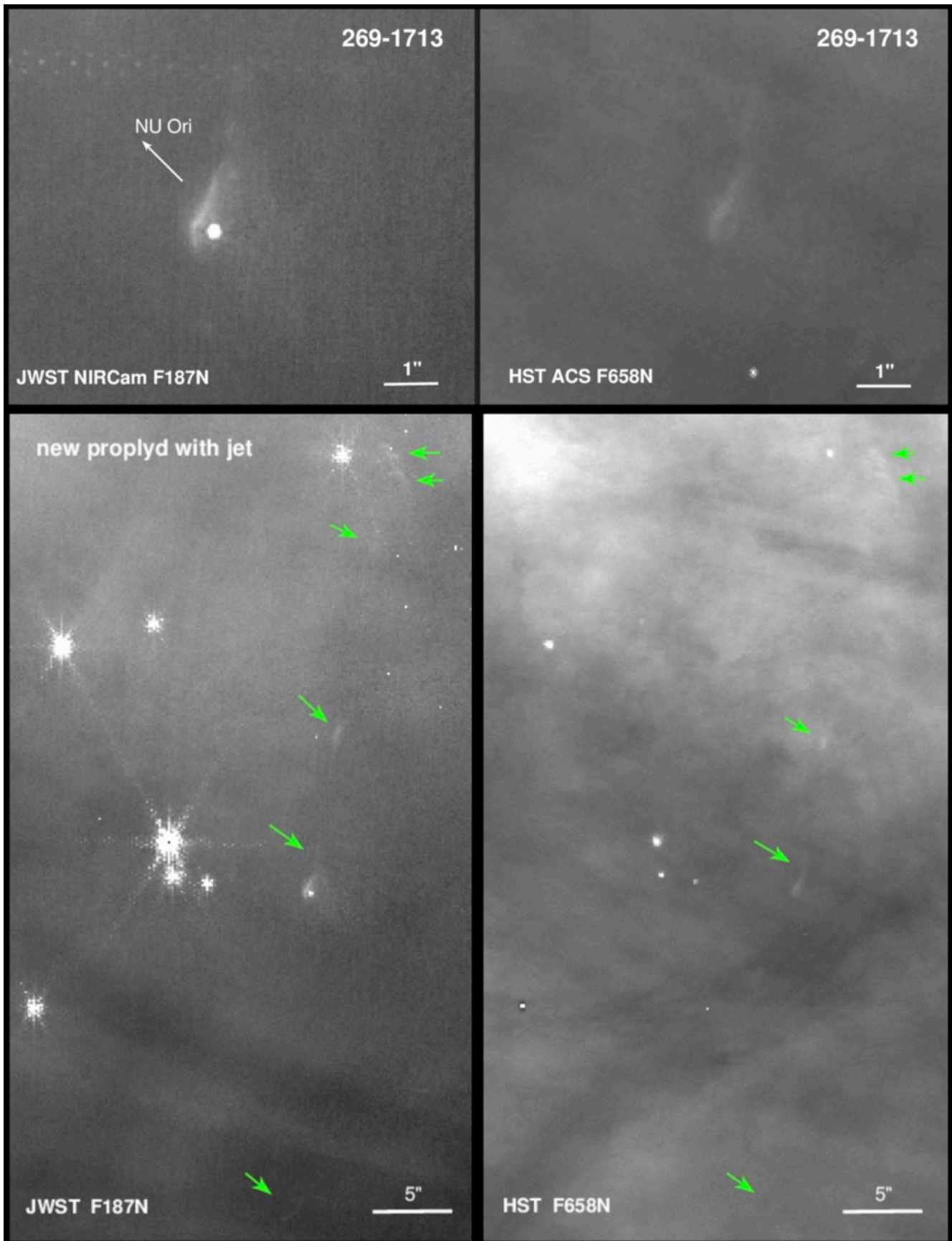


Fig. C.15. Zoom on the new proplyd found in the M43 north region (detector A) at $97''$ southwest of the ionizing star NU Ori (top figure). This object also shows a prominent jet identified by a chain of knots visible in both $\text{Pa}\alpha$ and $\text{H}\alpha$ images (bottom figure). However, the central star is only visible in the near-IR, reflecting the youth of this object. The JWST/NIRCам F187N images in the left and the HST/ACS F658N images in the right have similar spatial resolution. North is up and east to the left.