



Publication Year	2017
Acceptance in OA	2020-09-09T11:08:59Z
Title	Phylogenetic Analyses of Quasars and Galaxies
Authors	Fraix-Burnet, Didier, D'ONOFRIO, MAURO, MARZIANI, Paola
Publisher's version (DOI)	10.3389/fspas.2017.00020
Handle	http://hdl.handle.net/20.500.12386/27243
Journal	FRONTIERS IN ASTRONOMY AND SPACE SCIENCES
Volume	4



Phylogenetic Analyses of Quasars and Galaxies

Didier Fraix-Burnet^{1*}, Mauro D'Onofrio² and Paola Marziani³

¹ Univ. Grenoble Alpes, CNRS, IPAG, Grenoble, France, ² Osservatorio Astronomico di Padova (INAF), Padua, Italy,

³ Dipartimento di Fisica e Astronomia, Università di Padova, Padua, Italy

Phylogenetic approaches have proven to be useful in astrophysics. We have recently published a Maximum Parsimony (or cladistics) analysis on two samples of 215 and 85 low-*z* quasars ($z < 0.7$) which offer a satisfactory coverage of the Eigenvector 1-derived main sequence. Cladistics is not only able to group sources radiating at higher Eddington ratios, to separate radio-quiet (RQ) and radio-loud (RL) quasars and properly distinguishes core-dominated and lobe-dominated quasars, but it suggests a black hole mass threshold for powerful radio emission as already proposed elsewhere. An interesting interpretation from this work is that the phylogeny of quasars may be represented by the ontogeny of their central black hole, i.e. the increase of the black hole mass. However these exciting results are based on a small sample of low-*z* quasars, so that the work must be extended. We are here faced with two difficulties. The first one is the current lack of a larger sample with similar observables. The second one is the prohibitive computation time to perform a cladistic analysis on more than about one thousand objects. We show in this paper an experimental strategy on about 1,500 galaxies to get around this difficulty. Even if it is not related to the quasar study, it is interesting by itself and opens new pathways to generalize the quasar findings.

Keywords: unsupervised classification, quasars, galaxies, multivariate analysis, phylogenetic methods

OPEN ACCESS

Edited by:

Sandor Mihaly Molnar,
National Taiwan University, Taiwan

Reviewed by:

Milan S. Dimitrijevic,
Astronomical Observatory, Serbia
Omaira González Martín,
Instituto de Radioastronomía y
Astrofísica, Mexico

*Correspondence:

Didier Fraix-Burnet
didier.fraix-burnet@
univ-grenoble-alpes.fr

Specialty section:

This article was submitted to
Milky Way and Galaxies,
a section of the journal
Frontiers in Astronomy and Space
Sciences

Received: 28 July 2017

Accepted: 25 September 2017

Published: 10 October 2017

Citation:

Fraix-Burnet D, D'Onofrio M and
Marziani P (2017) Phylogenetic
Analyses of Quasars and Galaxies.
Front. Astron. Space Sci. 4:20.
doi: 10.3389/fspas.2017.00020

1. INTRODUCTION: ASTROCLADISTICS

Astrocladistics¹ (Fraix-Burnet et al., 2006a,b,c; Fraix-Burnet, 2016, 2017; Rampazzo et al., 2016, and references therein) aims at introducing phylogenetic tools in astrophysics.

These tools try to establish the relationships between the species by minimizing the total evolutionary cost depicted on a phylogenetic tree. The most general and the simplest to implement technique is Maximum Parsimony, also known as cladistics, and is based on the parameters, and not on distances between the objects. The trees that result from cladistic analysis should not be interpreted as genealogic trees: here, as the trees do not indicate ancestor or descendant objects, each quasar supposedly represents a species (i.e., a class). In this phylogenetic sense, the trees can be rooted according to a parameter that may have an evolutionary meaning.

The phylogenetic tools are devised to take the evolution of object populations into account. They do not rely on similarities, derived from the computation of distances, but on the fact that diversity is gained through evolution and speciation. For instance, similarity techniques (like most statistical clustering and classification or phenetic tools) tend to find hyperspheres in the parameter

¹<https://astrocladistics.org>

space, while phylogenetic tools are able to detect evolutionary paths as can be shown on stellar evolutionary tracks (Fraix-Burnet, 2017). Many applications have been published on many kinds of astrophysical objects (Fraix-Burnet et al., 2009, 2010, 2012; Cardone and Fraix-Burnet, 2013; Fraix-Burnet and Davoust, 2015; Jofre et al., 2017; Holt et al., submitted).

Phylogenetic approaches represent the relationships using trees or networks, the first ones being simpler to read. From these evolutionary schemes, it is possible to gather objects into groups that supposedly share the same common ancestor species (monophyletic groups). These groups appear as substructures (i.e. bunches of branches) in the tree, their exact number depending on the desired level of details in their physical interpretation.

In this paper, we summarize an exciting cladistic analysis of low- z quasars and illustrate a possible approach to extend such study on much larger samples.

2. A CLADISTIC ANALYSIS OF A LOW- Z QUASAR SAMPLE

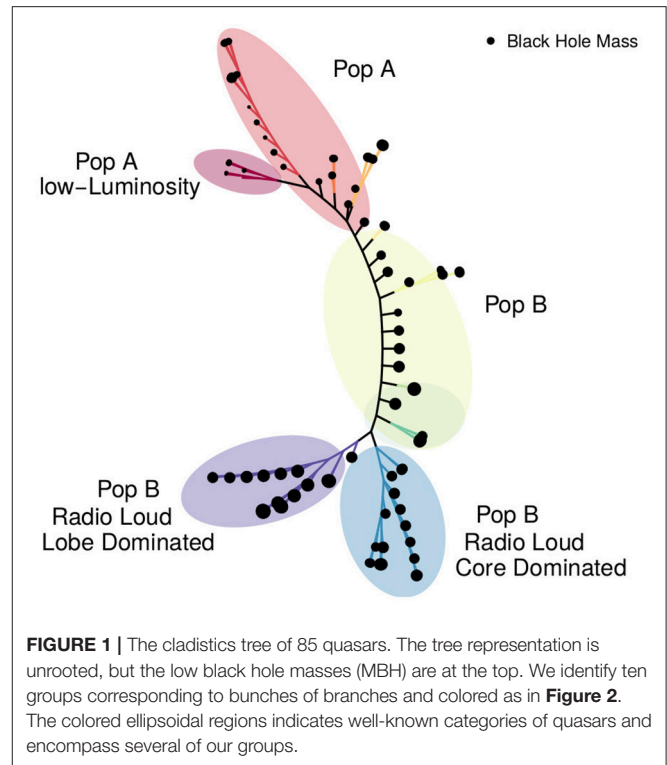
This analysis is published in Fraix-Burnet et al. (2017). Two samples of low-redshift ($z \leq 0.7$) quasars are used: one with 215 objects presented by Marziani et al. (2003), and another one made of 85 quasars cross-matched with (Sulentic et al., 2007) have measurements of the CIV line. These two samples are modest in size but have good quality measurements of emission lines ($H\beta$, FeII, [OIII], CIV...). For the cladistic analysis, the 215 and 85 object samples have, respectively 7 and 11 parameters.

With such relatively small samples, the cladistic analysis is relatively easy, and allows for extensive test of its reliability through kinds of bootstrap approaches. The most parsimonious tree in **Figure 1** shows the 85 quasars at the leaves (ends of the branches). Bunches of branches that appear to depart from the main trunk are colored to define groups of quasars that hypothetically may share similar evolutionary histories.

To understand and interpret this tree, it is necessary to look at the properties of the groups, for instance using boxplots (**Figure 2**). The tree (**Figure 1**) is arbitrarily presented with the group having the lowest black hole mass is at the top. The groups on the boxplots are then ordered from the top of the tree to the bottom.

It is striking to note that the black hole mass increases nearly regularly toward the bottom of the tree. Since the black hole mass (MBH) can only grow as a function of quasar evolution and cosmic time, the ontogeny of black holes is represented by their monotonic increase in mass. Considering that MBH provides a sort of arrow of time of nuclear activity, a phylogenetic interpretation of the tree becomes possible if the cladistic tree is rooted on black hole mass.

Considering other properties, the cladistic tree is thus consistent with the more massive radio-quiet Population B sources (disk dominated, lower Eddington ratio) at low- z appearing as a more evolved counterpart of Population A (wind dominated sources, higher Eddington ratio) to which the local Narrow-Line Seyfert 1s belong.

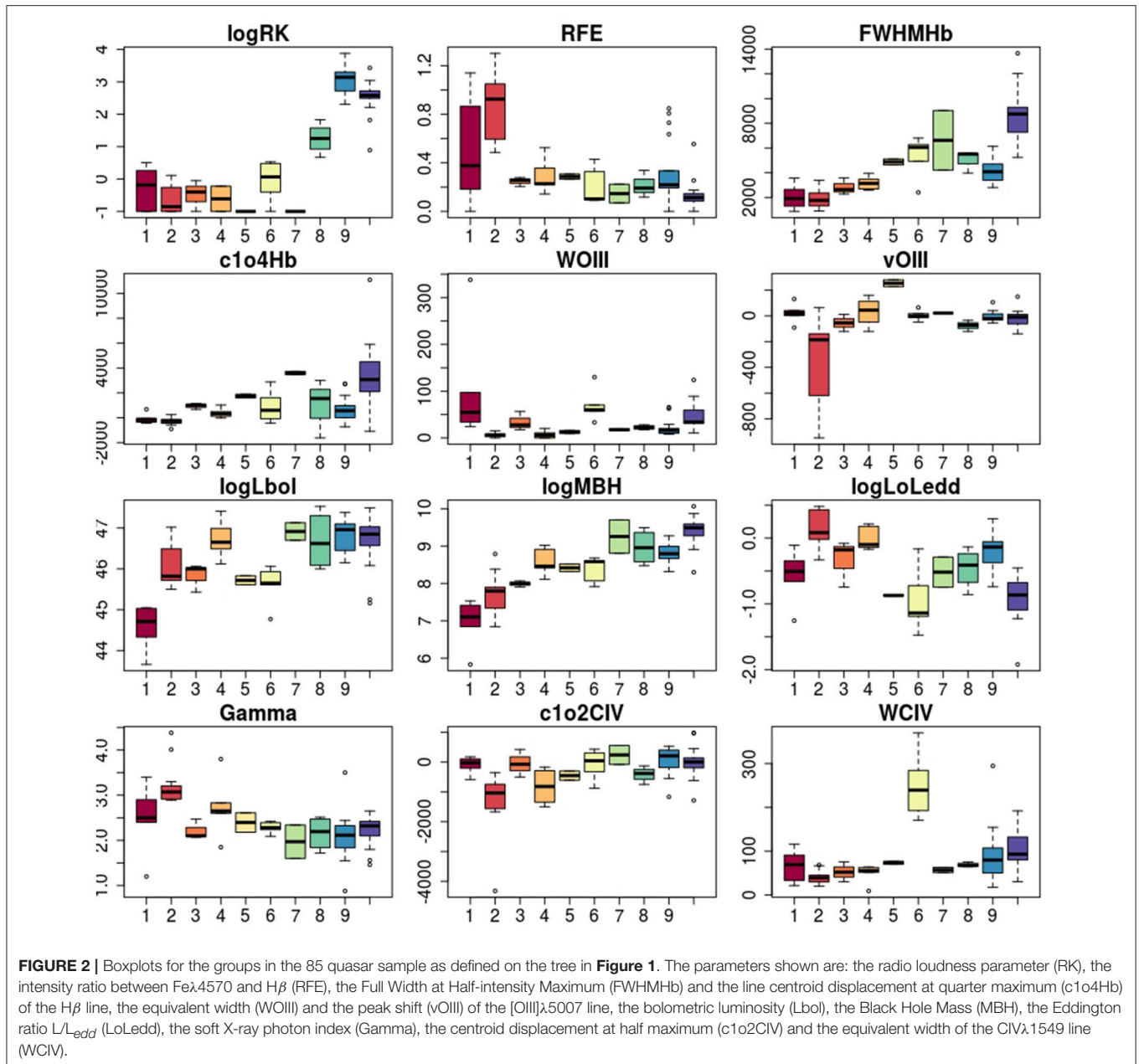


The core-dominated and lobe-dominated Radio Loud (RL) sources are in two distinct groups at the bottom of the tree, indicating they are monophyletic groups. Quite interestingly, these powerful RL sources appear in our low- z sample only above a mass threshold.

In conclusion, the quasar sample studied in Fraix-Burnet et al. (2017) contains a population of massive quasars which are more evolved and a population of less-massive quasars that are radiating at a higher L/L_{Edd} . While L/L_{Edd} remains the physical factor governing E1 (Marziani et al., 2001; Sulentic et al., 2011; Sulentic and Marziani, 2015), high-MBH quasars may have resembled low-MBH quasars in an earlier stage of their evolution.

The cladistic analysis is thus able to recover well-known classes of quasars, but more importantly brings a unique insight on their phylogeny. However, this picture is only valid for the low- z sample studied, and no generalization to the entire quasar population is possible. But the results are sufficiently exciting to justify extensions of this work to other samples. Two directions are foreseen, both requiring higher- z quasar populations, to better depict the quasar evolution. Firstly, it would be interesting to study a sample within a constrained redshift range at another epoch of the Universe to check whether the evolution of the properties of quasars is similar. Secondly, the relationships between quasar populations in a larger redshift range would give a clearer picture of the global evolution of the black hole mass and the different properties like the radio loudness or the disk/wind dichotomy.

Unfortunately, data are either not existing or of insufficient quality which requires dedicated surveys with large-collecting



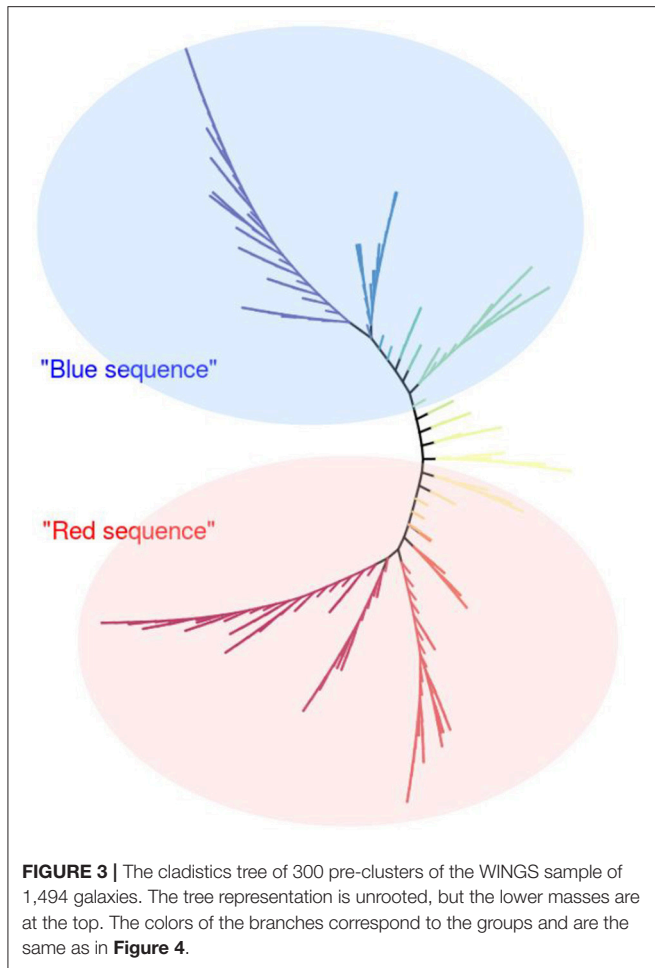
area telescopes to match the luminosity range of low- z quasars that remain almost unobserved at intermediate-to-high redshift (Sulentic et al., 2014). In addition, the cladistic technique is very demanding in computing resources. Basically, all possible trees made of the objects must be built to select the most parsimonious one in terms of evolutionary complexity. There are heuristic tricks to avoid this thorough quest, but still a cladistic analysis is practically not feasible with more than about a thousand objects.

Another approach is required. Since we do not have a big quasar sample, we present in the following a tentative strategy on a different sample made of galaxies, as an example of potential applications of cladistics to large samples of sources.

3. A CLADISTIC ANALYSIS OF LOW-L ELGS IN CLUSTER

3.1. Sample

The WINGS survey (Fasano et al., 2006) is an imaging and spectroscopic study of the brightest X-ray clusters at redshift $0.04 < z < 0.07$ selected from the ROSAT all sky survey. The sample for this analysis has 1,494 galaxies belonging to several clusters, and eleven parameters have been used for the cladistic analysis itself: B-V, logRe, surface brightness, H β , D4000, Mass, Sersic index n (measures the degree of curvature of the Sersic profile describing how the intensity of a galaxy varies with distance from its center), H α /NII, Gband, Mg, and Na.



3.2. Pre-Clustering

Phylogenetic methods are intended to find relationships between classes (species) of objects. But there is no multivariate classification of galaxies (Fraix-Burnet et al., 2015). This would be however useful since it is easier and physically more relevant to study different types of objects rather than millions of individuals. This dimension reduction is also necessary in the era of the huge databases brought by current and future telescopes.

This multivariate classification is one objective of astrocladistics. However, we are limited by the size of the samples to study. There are other phylogenetic techniques that tackle this problem efficiently, but they are based on distances, and most often adapted for the specific evolutionary processes of living organisms and their traits (e.g., Saitou and Nei, 1987; Gascuel and Steel, 2006). Some work should be done to assess their applicability to astrophysics. There are also many statistical tools for unsupervised classification (or clustering, De et al., 2013), but they gather objects according to their similarities, not to their evolutionary relationships.

We will discuss this big issue with possible solutions in another paper (Fraix-Burnet in prep.), and here show the results of a first approach we have implemented.

The idea behind this approach is rather intuitive: we are looking for structures in the parameter space, structures that both gather and relate the objects of our sample. Since we have too many of these objects, we try to reduce the resolution of our data by replacing very close (similar) objects into meta-objects that we call pre-clusters. These pre-clusters take the median properties of their components. In other words, we postulate that there may be some redundancies in our data. Then we can perform the cladistic analysis on these pre-clusters that can subsequently be gathered into groups from the tree.

This idea is also mentioned by Murtagh and Legendre (2014) that recommends to perform a pre-clustering using a hierarchical classification method (that builds a hierarchy of clusters, Fraix-Burnet et al., 2015) for the k-means analysis (a partitioning method, MacQueen, 1967; Fraix-Burnet et al., 2015). While for our problem many pre-clustering algorithms could a priori be used, we here choose the hierarchical clustering one. Note that this technique requires a huge amount of CPU time with very large samples.

The number of pre-clusters is arbitrary. Obviously it should not be too low otherwise we probably mix together different kinds of objects. It cannot be too high either because of the limitation of the cladistics analysis. We have found that 300 pre-clusters is here a good choice compromise because the cladistic analysis takes only a few hours allowing many runs to test this strategy.

3.3. Results

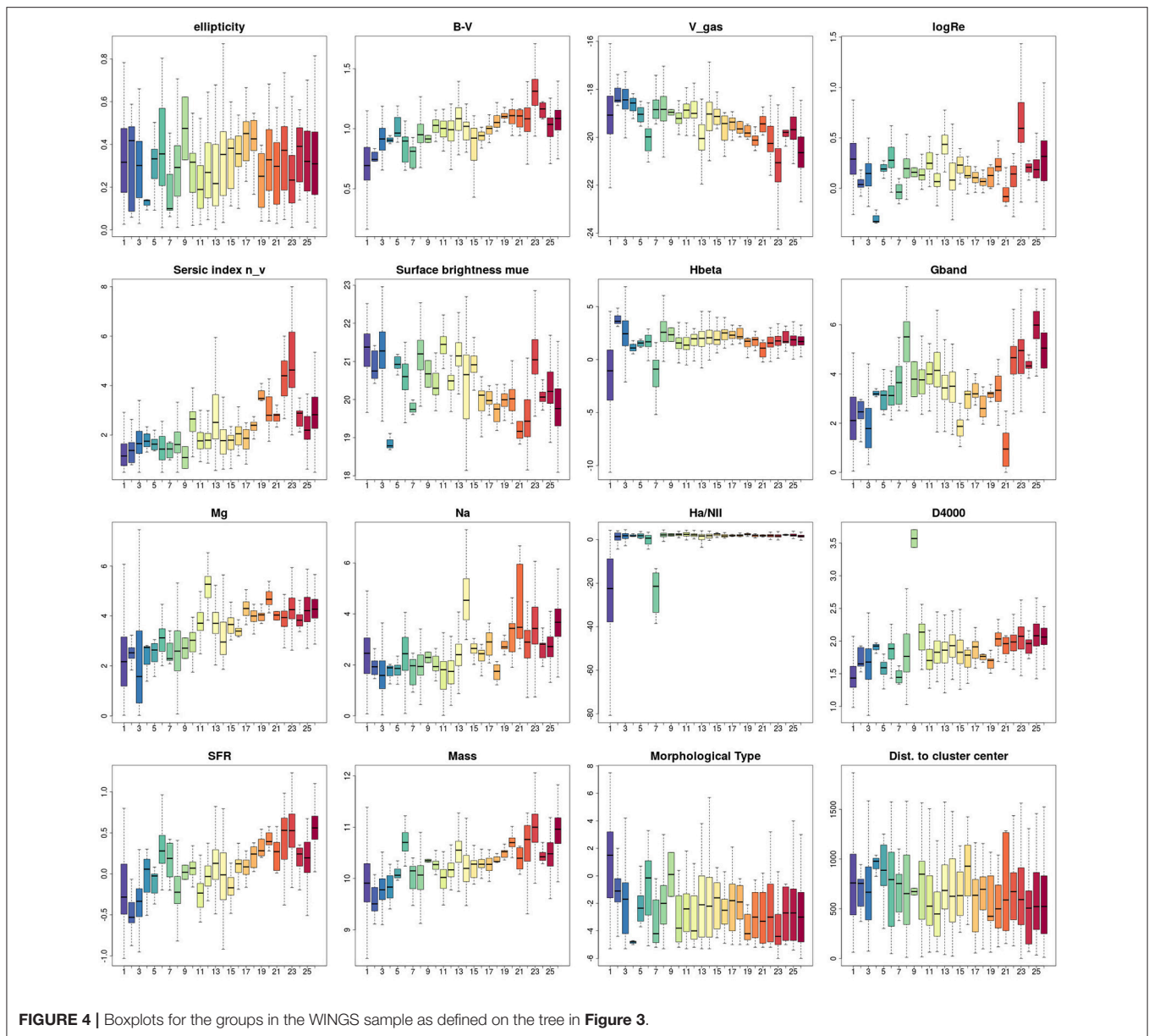
The tree (**Figure 3**) is obtained with the 300 pre-clusters. Each leaf (ending branch) of the tree is thus one pre-cluster. We have gathered these pre-clusters depending on the substructures of the tree, and the groups are represented by different colors. Each group of galaxies thus corresponds either to a single branch or to a bunch of branches on the tree.

The boxplots (**Figure 4**) show the statistics of several parameters for each of the groups. The order of the groups is arbitrary and has been chosen to underline the increase of the mass. On the tree in **Figure 3** this parameter increases from top to bottom.

The color progression from blue to red grossly matches the increase in mass of galaxies, as well as other clear trends as visible on the boxplots. Interestingly, the morphological type decreases along the tree downward, and possibly the distance to the cluster center as well even though the in-group scatters are large.

Sometimes, some groups stand out from these trends in some parameters, such as the group 6 for the mass or group 12 for Mg. These groups will be further investigated since they could be either the results of some weird data or, more interestingly, a new peculiar species of galaxies that could lead us to a better understanding of the evolution of galaxies than simply redder colors or larger masses.

The WINGS sample galaxies belong to X-ray bright clusters, which are rather evolved systems, predominantly close to a state of viral equilibrium. We find that most of the groups have a representant in all the clusters, or conversely all clusters span the entire tree. Despite the low statistics in some of the clusters, this would indicate that the classification scheme depicted on the tree



in **Figure 3** could be well of general validity for galaxies at low redshift.

We have also analyzed a control sample of 497 higher redshift field galaxies. It is impossible to root the tree such that the boxplots show as many monotonic trends as for the cluster sample above, indicating that the field galaxies of our sample may not possess a "common ancestor," that is they could be made of two distinct populations with different origins. Another possibility is that their evolution is more complex, but the sample is probably too small to conclude in this direction. The fact that the cluster sample of low-redshift galaxies is compatible with a common ancestor can be due to: (i) the general influence of clusters on galaxy evolution, (ii) time smoothing out somewhat the different origins of these galaxies, (iii) a lower diversity by a sort of volume selection effect.

4. CONCLUSION

Categorizing quasars or galaxies is usually made through a handful of properties at most. Multivariate clustering is still rare (Fraix-Burnet et al., 2015), but only phylogenetic tools like cladistics provide relationships that emerge from the data. Here (Fraix-Burnet et al., 2017), the quasar sample is small and relatively well contained in redshift, so probably in diversity. Indeed, the diversity of the quasar sample (which is exclusively low- z , $z \lesssim 0.7$) can be organized along a 1D sequence, the eigenvector-1 main sequence.

To extend this study to larger samples at higher redshifts, we present a possible strategy to perform the same kind of analysis by performing a pre-clustering using a hierarchical clustering technique, followed by a cladistic analysis on the pre-clusters.

This is applied on a galaxy samples due to the current lack of larger samples of quasars with similar parameters as above.

Even though this diversity is much larger for the WINGS galaxy sample, our proposed strategy successfully establishes a phylogenetic scheme that points to several evolutive properties (like color, mass, metallicity but also D4000 and the Sersic index n) characterizing a level of diversification (or evolution). Some of these evolutive correlations are very probably not causal, unlike the quasar evolution with MBH.

Some caution is necessary when interpreting the cladograms presented here. One should not conclude that every quasar or every galaxy follows some linear evolution along the tree. There are bunches of branches (sub-structures of the trees) that could suggest some dead ends, or the lack of more ancestral objects.

REFERENCES

- Cardone, V. F., and Fraix-Burnet, D. (2013). Hints for families of grbs improving the hubble diagram. *Mon. Not. R. Astron. Soc.* 434, 1930–1938. doi: 10.1093/mnras/stt1122
- De, T., Chattopadhyay, T., and Chattopadhyay, A. K. (2013). Comparison among clustering and classification techniques on the basis of galaxy data. *Calcutta Stat. Assoc. Bull.* 65, 257–260. doi: 10.1177/0008068320130110
- Fasano, G., Marmo, C., Varela, J., D’Onofrio, M., Poggianti, B. M., Moles, M., et al. (2006). Wings: a wide-field nearby galaxy-cluster survey. i. optical imaging. *Astron. Astrophys.* 445, 805–817. doi: 10.1051/0004-6361:20053816
- Fraix-Burnet, D. (2016). “Concepts of classification and taxonomy phylogenetic classification,” in *Statistics for Astrophysics: Clustering and Classification*, Vol. 77 (Paris: EAS Publications Series; EDP Sciences), 221–257.
- Fraix-Burnet, D. (2017). *Phylogenetic Tools in Astrophysics*. John Wiley & Sons, Ltd.
- Fraix-Burnet, D., Chattopadhyay, T., Chattopadhyay, A. K., Davoust, E., and Thuillard, M. (2012). A six-parameter space to describe galaxy diversification. *Astron. Astrophys.* 545:A80. doi: 10.1051/0004-6361/201218769
- Fraix-Burnet, D., Choler, P., and Douzery, E. (2006a). Towards a phylogenetic analysis of galaxy evolution : a case study with the dwarf galaxies of the local group. *Astron. Astrophys.* 455, 845–851. doi: 10.1051/0004-6361:20065098
- Fraix-Burnet, D., Choler, P., Douzery, E., and Verhamme, A. (2006b). Astrocladistics: a phylogenetic analysis of galaxy evolution I. Character evolutions and galaxy histories. *J. Classif.* 23, 31–56. doi: 10.1007/s00357-006-0003-5
- Fraix-Burnet, D., and Davoust, E. (2015). Stellar populations in ω centauri: a multivariate analysis. *Mon. Not. R. Astron. Soc.* 450, 3431–3441. doi: 10.1093/mnras/stv791
- Fraix-Burnet, D., Davoust, E., and Charbonnel, C. (2009). The environment of formation as a second parameter for globular cluster classification. *Mon. Not. R. Astron. Soc.* 398, 1706–1714. doi: 10.1111/j.1365-2966.2009.15235.x
- Fraix-Burnet, D., Douzery, E., Choler, P., and Verhamme, A. (2006c). Astrocladistics: a phylogenetic analysis of galaxy evolution II. Formation and diversification of galaxies. *J. Classif.* 23, 57–78. doi: 10.1007/s00357-006-0004-4
- Fraix-Burnet, D., Dugué, M., Chattopadhyay, T., Chattopadhyay, A. K., and Davoust, E. (2010). Structures in the fundamental plane of early-type galaxies. *Mon. Not. R. Astron. Soc.* 407, 2207–2222. doi: 10.1111/j.1365-2966.2010.17097.x
- Fraix-Burnet, D., Marziani, P., O’nofrio, M. D., and Dultzin, D. (2017). The phylogeny of quasars and the ontogeny of their central black holes. *Front. Astron. Space Sci.* 4:1. doi: 10.3389/fspas.2017.00001
- Fraix-Burnet, D., Thuillard, M., and Chattopadhyay, A. K. (2015). Multivariate approaches to classification in extragalactic astronomy. *Front. Astron. Space Sci.* 2:3. doi: 10.3389/fspas.2015.00003
- Gascuel, O., and Steel, M. (2006). Neighbor-joining revealed. *Mol. Biol. Evol.* 23, 1997–2000. doi: 10.1093/molbev/msl072
- Jofre, P., Das, P., Bertranpetit, J., and Foley, R. (2017). Cosmic phylogeny: reconstructing the chemical history of the solar neighbourhood with an evolutionary tree. *ArXiv e-prints* 467, 1140–1153. Submitted to MNRAS doi: 10.1093/mnras/stx075
- MacQueen, J. B. (1967). “Some methods for classification and analysis of multivariate observations” in *Proceedings of 5th Berkeley Symposium on Mathematical Statistics and Probability* (Berkeley, CA: University of California Press), 281–297.
- Marziani, P., Sulentic, J. W., Zamanov, R., Calvani, M., Dultzin-Hacyan, D., Bachev, R., et al. (2003). An optical spectroscopic atlas of low-redshift active galactic nuclei. *Astrophys. J. Suppl. Ser.* 145:199. doi: 10.1086/346025
- Marziani, P., Sulentic, J. W., Zwitter, T., Dultzin-Hacyan, D., and Calvani, M. (2001). Searching for the physical drivers of the eigenvector 1 correlation space. *Astrophys. J.* 558, 553–560. doi: 10.1086/322286
- Murtagh, F., and Legendre, P. (2014). Ward’s hierarchical agglomerative clustering method: which algorithms implement ward’s criterion? *J. Classif.* 31, 274–295. doi: 10.1007/s00357-014-9161-z
- Rampazzo, R., Mauro, D., Simone, Z., Debra, M. E., Eija, L., Pierre, A., et al. (2016). “Family traits of galaxies: from the tuning fork to a physical classification in a multi-wavelength context,” in *From the Realm of the Nebulae to Populations of Galaxies. Dialogues on a Century of Research, 1st Edn, Vol. 435, Astrophysics and Space Science Library* (Springer International Publishing), 189–242, 243–380.
- Saitou, N., and Nei, M. (1987). The neighbor-joining method: a new method for reconstructing phylogenetic trees. *Mol. Biol. Evol.* 4, 406–425.
- Sulentic, J., and Marziani, P. (2015). Quasars in the 4d eigenvector 1 context: a stroll down memory lane. *Front. Astron. Space Sci.* 2:6. doi: 10.3389/fspas.2015.00006
- Sulentic, J., Marziani, P., and Zamfir, S. (2011). The case for two quasar populations. *Balt. Astron.* 20, 427–434. doi: 10.1515/astro-2017-0314
- Sulentic, J. W., Bachev, R., Marziani, P., Negrete, C. A., and Dultzin, D. (2007). C iv 1549 as an eigenvector 1 parameter for active galactic nuclei. *Astrophys. J.* 666:757. doi: 10.1086/519916
- Sulentic, J. W., Marziani, P., del Olmo, A., Dultzin, D., Perea, J., and Alenka Negrete, C. (2014). Gtc spectra of $z \simeq 2.3$ quasars: comparison with local luminosity analogs. *Astron. Astrophys.* 570:A96. doi: 10.1051/0004-6361/201423975

Conflict of Interest Statement: The authors declare that the research was conducted in the absence of any commercial or financial relationships that could be construed as a potential conflict of interest.

Copyright © 2017 Fraix-Burnet, D’Onofrio and Marziani. This is an open-access article distributed under the terms of the Creative Commons Attribution License (CC BY). The use, distribution or reproduction in other forums is permitted, provided the original author(s) or licensor are credited and that the original publication in this journal is cited, in accordance with accepted academic practice. No use, distribution or reproduction is permitted which does not comply with these terms.