



Publication Year	2019
Acceptance in OA	2021-01-13T14:40:41Z
Title	Testing the rotation versus merger scenario in the galaxy cluster Abell 2107
Authors	LIU, ANG, TOZZI, Paolo
Publisher's version (DOI)	10.1093/mnras/stz713
Handle	http://hdl.handle.net/20.500.12386/29736
Journal	MONTHLY NOTICES OF THE ROYAL ASTRONOMICAL SOCIETY
Volume	485

Testing the rotation versus merger scenario in the galaxy cluster Abell 2107

Ang Liu^{1,2,3★} and Paolo Tozzi^{1★}

¹*INAF Osservatorio Astrofisico di Arcetri, Largo E. Fermi, I-50122 Firenze, Italy*

²*Department of Physics, Sapienza University of Rome, I-00185 Rome, Italy*

³*Department of Physics, University of Rome Tor Vergata, I-00133 Rome, Italy*

Accepted 2019 March 7. Received 2019 March 7; in original form 2018 December 21

ABSTRACT

We search for global rotation of the intracluster medium in the galaxy cluster Abell 2107, where previous studies have detected rotational motion in the member galaxies with a high-significance level. By fitting the centroid of the iron K_{α} line complex at 6.7–6.9 keV rest frame in *Chandra* ACIS-I spectra, we identify the possible rotation axis with the line that maximizes the difference between the emission-weighted spectroscopic redshift measured in the two halves defined by the line itself. Then, we measure the emission-weighted redshift in linear regions parallel to the preferred rotation axis, and find a significant gradient as a function of the projected distance from the rotation axis, compatible with a rotation pattern with maximum tangential velocity $v_{\max} = 1380 \pm 600 \text{ km s}^{-1}$ at a radius $\lambda_0 \sim 160 \text{ kpc}$. This result, if interpreted in the framework of hydrostatic equilibrium, as suggested by the regular morphology of Abell 2107, would imply a large mass correction of the order of $\Delta M = (6 \pm 4) \times 10^{13} M_{\odot}$ at $\sim 160 \text{ kpc}$, which is incompatible with the cluster morphology itself. A more conservative interpretation may be provided by an unnoticed off-centre, head-on collision between two comparable haloes. Our analysis confirms the peculiar dynamical nature of the otherwise regular cluster Abell 2107, but is not able to resolve the rotation versus merger scenario, a science case that can be addressed by the next-generation X-ray facilities carrying X-ray bolometers on board.

Key words: galaxies: clusters: intracluster medium – X-rays: galaxies: clusters.

1 INTRODUCTION

Galaxy clusters are the largest virialized structures in the Universe, and have been largely used to map the growth of cosmic structures through cosmic ages, and, ultimately, to constrain cosmological models (Borgani et al. 2008; Allen, Evrard & Mantz 2011) and modified gravity models (Schmidt, Vikhlinin & Hu 2009; Mitchell et al. 2018). The key quantity is the virialized mass, which is often computed under the assumptions of spherical symmetry, isotropic velocity distribution of the member galaxies, and hydrostatic equilibrium of the X-ray emitting intracluster medium (ICM). However, despite virialization is considered a fair assumption, substantiated by numerical simulations (see Kravtsov & Borgani 2012), it is now commonly accepted that it is not completely satisfied in several cases, as suggested by in-depth analysis of hydrodynamical numerical studies (see e.g. Biffi et al. 2016) and by the increasing claims of dynamical substructures and bulk motions observed in massive clusters (Girardi et al. 1997; Parekh

et al. 2015; Liu et al. 2016). In addition to the presence of bulk motions involving significant amount of the cluster mass, another aspect that can significantly affect mass estimates is the presence of global rotation, a possibility which is often ignored when applying the classic mass-weighting methods to galaxy clusters. In dynamical studies the possible presence of global rotation is almost always neglected, with the exception of few numerical works (Lau, Kravtsov & Nagai 2009; Biffi, Dolag & Böhringer 2011; Baldi et al. 2018). From the observational point of view, there are several ongoing projects aiming at quantifying the impact of bulk motions, particularly associated with mergers in the external regions of clusters (see e.g. Ghirardini et al. 2018, and references therein), and, in addition, detailed works have been devoted to the non-thermal pressure contribution from the combination of turbulence and bulk motions, in which rotation can be considered a particular case, despite not explicitly treated (see Eckert et al. 2019).

A fundamental issue concerns the observational difficulty in disentangling asymmetric bulk motions, due to the presence of substructures with anisotropic velocity distribution associated with multiple off-centred mergers or continuous accretion of matter

* E-mail: liuang@arcetri.astro.it (AL); ptozzi@arcetri.astro.it (PT)

along filaments, from a global rotation. In other words, it is almost impossible to distinguish two overlapping clusters from one rotating cluster (see Oegerle & Hill 1992), if not by tracing the rotation curve with high spatial resolution. In the optical band, these studies are practically limited by the sparse and discrete sampling of the velocity along the line of sight, due to the limited number of member galaxies. To date, the number of redshifts available in single clusters can reach a maximum of a thousand cluster members only for a few, well-known targets (see Rosati et al. 2014; Rines et al. 2016). Due to these difficulties, dynamical studies in the optical band, based on spectroscopic redshift distribution of the member galaxies, are mostly focused on the infall of smaller haloes in the outskirts, or galaxies flowing along filamentary structures that are observed to connect the cluster to the mildly non-linear large-scale structures of the Universe.

Although very few systematic studies of global rotation have been done, it was possible to show that a minority of clusters do show global rotation not associated with recent mergers on the basis of spectroscopic samples from SDSS and 2dFGRS (Hwang & Lee 2007). Other studies on cluster rotation have been focused to several specific targets. Apart from a few suggestions of cluster rotation from velocity gradients (for a complete set of historical references see Kalinkov et al. 2005), SC0316–44 was the first cluster for which a claim of rotation was made on the basis of the analysis of only 15 member galaxies (Materne & Hopp 1983). Abell 2107 (hereafter A2107) has been claimed to show spatial correlations in the galaxy velocities, consistent with rotation, in a study by Oegerle and Hill (1992), based on the redshifts of 68 member galaxies. However, the pure rotation model does not account for the peculiar velocity of its brightest cluster galaxy (BCG) of $\sim 270 \text{ km s}^{-1}$ with respect to the bulk of the cluster. Eventually, a more in-depth analysis confirmed the rotation of A2107 (Kalinkov et al. 2005), with the strongest evidence for rotation being the consistent positional angle of the velocity gradient for consecutive galaxy subsamples. Recently, a few systematic studies, using SDSS DR9 and DR10 spectroscopic data and new algorithms, found rotation in a significant but vastly different fraction of their samples, depending on the sample selection (see Tovmassian 2015a,b; Manolopoulou & Plionis 2017). If confirmed, a robust assessment of a widespread global rotation and the associated amount of rotational support across the cluster population, would allow one to include this contribution to the well known effects of turbulence and disordered bulk motions, and therefore to alleviate the bias affecting masses measured through classic hydrostatic equilibrium. Pushing further ahead with this study, we also remark that a statistical treatment of rotation among clusters of galaxies can be used to constrain the origin and growth of angular momentum in cosmic structures at cluster scales.

Another observational window potentially relevant to measure the inner dynamical structure of clusters, including rotation, is provided by the X-ray emission from the ICM. This technique has the advantage of tracing the continuous distribution of collisional matter constituted by the dominant baryonic component in clusters. Bulk motions in the ICM can be detected by measuring the spatial distribution of its emission-weighted redshift, and hence radial velocity, in limited regions. This is done by fitting the position of the prominent iron K_{α} line at 6.7–6.9 keV in the ICM X-ray spectrum. These measurements, however, require high spectral and spatial resolutions at the same time due to the expected patchy distribution of bulk motions. The tight requirement on spatial resolution limits these studies to the use of CCD data, which, in turn, implies a poor spectral resolution. Given this limitation, the measurement of the centroid of the most prominent emission line complex in CCD

spectra provides the most accurate spatially resolved measurement for the ICM redshift and the associated statistical error. The uncertainty on the redshift σ_z strongly depends on the strength of the signal, on the modelization of the thermal structure of the ICM, and on calibration issues, and typically is found in the range $0.002 < \sigma_z < 0.01$ for bright, nearby clusters and groups observed with *Chandra*. We refer the reader to Yu et al. (2011) for a discussion on the accuracy on the global ICM redshift and to Liu et al. (2015, 2016) for the accuracy in spatially resolved analysis of the ICM. Therefore, with a typical uncertainty on ICM velocity in nearby clusters in the range $c \times \sigma_z / (1+z) \sim 500\text{--}2000 \text{ km s}^{-1}$, the search of bulk motions provided positive results only in a few clusters with highly disturbed dynamical status (see Parekh et al. 2015; Liu et al. 2016; and references therein), including the remarkable case of the Bullet Cluster, where supersonic bulk motion has been identified along the line of sight and perpendicularly to the merger axis (Liu et al. 2015). In general, a direct comparison of bulk motions along the line of sight in the galaxy members and in the ICM shows that it is hard to associate galaxies and ICM motions (see e.g. Liu et al. 2018). This is due to the different dynamical evolution of merger and infall in collisionless (dark matter and galaxies) and collisional (ICM) components, which appears to become spatially decoupled within one dynamical time, as we can directly witness in the plane of the sky in the case of the so-called bullet-like clusters. In any case, global rotation, if any, is expected to be characterized by velocities significantly lower than the typical velocity dispersion in clusters, which makes it very hard to blindly search for global rotation of the ICM using the available spectral resolution of CCD X-ray imagers that can at best identify velocity differences of $\sim 1000 \text{ km s}^{-1}$ or larger, as previously mentioned. As a matter of fact, the study of ICM bulk motions will be always limited to a few cases until the advent of X-ray bolometers, which will be on board of XRISM and Athena (Guainazzi & Tashiro 2018). In the case of XRISM, the low angular resolution of the order of ~ 1 arcmin will enable study of bulk motions only in nearby clusters, since the signal from the ICM in distant clusters will be smeared out. On the other hand, the 5–10 arcsec angular resolution of the bolometer on board Athena (Barret et al. 2018) is expected to perform to the point of revolutionizing the study of ICM bulk motions. Currently, the launch of XRISM is planned for the year 2021¹, while Athena is expected to be launched around the year 2031². This impasse in the study of ICM dynamics follows the dramatic loss of the Hitomi satellite (Takahashi et al. 2018), which was anyhow able to provide a high spectral resolution view of the Perseus cluster, showing the effects of turbulence and bulk motions in its core (Hitomi Collaboration 2016).

In this context, no firm detection of global rotation in the ICM has been reported so far, but a fair number of numerical studies have been devoted to the investigation of the effects of major, off-centred mergers and continuous or minor merger infall from filaments on ICM rotation (Bianconi, Ettori & Nipoti 2013; Baldi et al. 2017). The only chance to test observationally ICM rotation is to focus on some extreme case, where the effects of rotation are maximum. In this work, we make a first attempt to find a signature of rotation in the ICM by targeting A2107, that is, to our knowledge, the best candidate for such a study. A2107 is a massive, cool core cluster at redshift $z = 0.0412$ (Oegerle & Hill 2001), with an estimated mass $M_{500} = 1.49 \times 10^{14} M_{\odot}$ (Piffaretti et al. 2011), and a global (i.e. including the cool core emission) temperature of $\sim 4 \text{ keV}$ within

¹ See <https://heasarc.gsfc.nasa.gov/docs/xrism/>

² See <https://www.the-athena-x-ray-observatory.eu/>

$\sim 0.3r_{500}$ (Fujita, Sarazin & Sivakoff 2006). This cluster, in addition to the historical claims of rotation previously mentioned, is also included among the clusters with significant rotation in the recent study of Manolopoulou and Plionis (2017), and confirmed by the recent study of Song et al. (2018), who found a 3.8σ signal of rotation based on the analysis of 285 member galaxies within $R < 20$ arcmin. The corresponding rotation velocity is $380\text{--}440 \text{ km s}^{-1}$ at 20 arcmin therefore which is slightly below the best spectral resolution expected for CCD data. Despite this, we aim at exploiting the archival *Chandra* observation of A2107 to search for global ICM rotation and compare it to the optical results.

The paper is organized as follows. In Section 2, we briefly describe the expected signatures of ICM rotation in the X-ray band in the simplest, idealized cases. In Section 3, we describe data reduction and analysis. In Section 4, we describe the measurement of global rotation, and present the results. In Section 5, after commenting on the constraints of possible systematics in our measurements, we discuss the rotation versus merger scenario on the basis of our findings and mention possible extensions of our study. Finally, our conclusions are summarized in Section 6. Throughout the paper, we adopt the concordance Λ CDM cosmology with $\Omega_\Lambda = 0.7$, $\Omega_m = 0.3$, and $H_0 = 70 \text{ km s}^{-1} \text{ Mpc}^{-1}$. We note that our results have a negligible dependence on the adopted cosmology. Quoted error bars correspond to a 1σ confidence level, unless noted otherwise.

2 ICM ROTATION: EXPECTED SIGNATURES IN X-RAYS

In this section, we briefly discuss the expected signature of ICM rotation in the X-ray band, assuming cylindrical rotation with no dependence along the rotation axis. We assume a dependence of the rotation velocity on the distance λ from the rotation axis of the kind

$$v(\lambda) = v_0 \frac{\lambda/\lambda_0}{(1 + \lambda/\lambda_0)^2}. \quad (1)$$

This rotation curve is introduced in Bianconi et al. (2013) as representative of a set of plausible rotation patterns in the ICM, as opposed to simpler but less physically motivated cases like rigid-body rotation (constant angular velocity) or flat rotation curve (a steep rise followed by a constant velocity). Here we do not make any attempt to connect the assumed rotation to the hydrostatic distribution of the ICM, which clearly would depend on the rotation pattern and on the stability of the ICM, which can be affected by turbulence due to a strong radial gradient in the tangential velocity. Therefore, we naively consider rotation in an almost spherically symmetric ICM distribution, which is unphysical. However, this is a good approximation to the case of A2107, which shows a regular morphology with small eccentricity, as we will discuss in Section 5.

To compute the map of the velocity along the line of sight, we need to include the effects of projection in the optically thin ICM distribution, and convolve the emission at each position with the corresponding emission weight. Clearly, the presence of different velocities projected along each line of sight results in both a broadening of the line and a shift of the line centroid. The first effect (see Zhuravleva et al. 2012) is not discussed here, since it is below the capability of CCD spectra, while the shift of the line centroid is potentially detectable, at least in the most prominent 6.7–6.9 keV emission line complex from the K_α lines of hydrogen and helium-like iron. To compute the emission-weighted shift at each

position on the plane of the sky, we need to assume a 3D density distribution of the ICM. The average ICM velocity (or redshift shift with respect to the global cluster redshift) along each line of sight is thus weighted by the emissivity, which, in turn, is given by the electron density squared n_e^2 multiplied by the cooling function $\Lambda(T, Z)$. The dependence of the emission weight on temperature and metallicity is relevant when both quantities rapidly vary with the radius, which typically occurs in cool cores. For simplicity, here we consider only the case of a smooth, isothermal ICM distribution with uniform metallicity described by a single β -model (Cavaliere & Fusco-Femiano 1976), with an emission weight proportional simply to n_e^2 .

Each line of sight sees the contribution of different rotation velocities corresponding to different distances from the rotation axis, and each contribution is weighted by n_e^2 . Therefore, the resulting projected velocity map depends on the ratio of the two scalelengths: the core radius r_c of the β -model distribution of the ICM and the scalelength λ_0 of the velocity curve. The detailed derivation of the projected line-of-sight velocity map is provided in the Appendix. An example with the rotation axis lying in the plane of the sky is shown in Fig. 1, where all the quantities are expressed in terms of the virial radius r_{vir} . The relevant parameters are therefore the concentration of the ICM 3D density distribution, defined as $c = r_{\text{vir}}/r_c$, and the concentration of the velocity curve, defined as $c_v = r_{\text{vir}}/\lambda_0$. In the left-hand panel of Fig. 1, the β parameter is set to $2/3$, while the concentration parameters c and c_v are put equal to 5 and 10, respectively. For example, this implies, for a virial radius of 1.5 Mpc, a core radius $r_c = 300 \text{ kpc}$, and a velocity scale of $\lambda_0 = 150 \text{ kpc}$, similar to the model adopted in Bianconi et al. (2013). For the sake of comparison, we show also the projected map in the case of a flat rotation and a rigid-body rotation (central and right-hand panel, respectively). In all the cases the maximum velocity is set to $v_{\text{max}} = 1000 \text{ km s}^{-1}$. In the case of a rotation profile described by equation (1), the velocity reaches its maximum for $\lambda = \lambda_0$, and corresponds to $v_{\text{max}} = v_0/4$.

In the left-hand panel of Fig. 1, the projected velocity map shows a peculiar shape that reflects the combined effects of the spherical ICM distribution and the cylindrical rotation pattern. This pattern can be, in principle, identified in high-resolution redshift maps. However, given the poor spectral resolution and the need to extract spectra from large regions to increase the S/N, we can simply assume a constant projected velocity along lines parallel to the rotation axis. The rotation axis can be efficiently identified from simple observables, such as the average emission-weighted projected velocity in opposing semicircles. In the lower panels of Fig. 1 we show the difference in the projected velocity averaged in each half of the cluster as a function of the angle θ (defined as in Section 4, with $\theta = \pi/2$ when the dividing line overlaps with the rotation axis).

From these examples we conclude that a simple analysis of CCD spectra with high S/N can identify the rotation axis, the maximum velocity, and the scalelength of the rotation curve, as long as the maximum velocity difference is comparable or larger than the spectral resolution of CCD data. This simple modelization does not take into account the flattening of the ICM distribution due to the rotation itself (see Bianconi et al. 2013), nor, obviously, the presence of disordered bulk motions across the ICM, which can in principle overlap with the rotation pattern. Therefore, in the following we assume that rotation, if present, occurs around an axis in the plane of the sky, and that there are no significant bulk motions. We will consequently proceed in two steps: first, we identify the rotation axis by maximizing the velocity difference

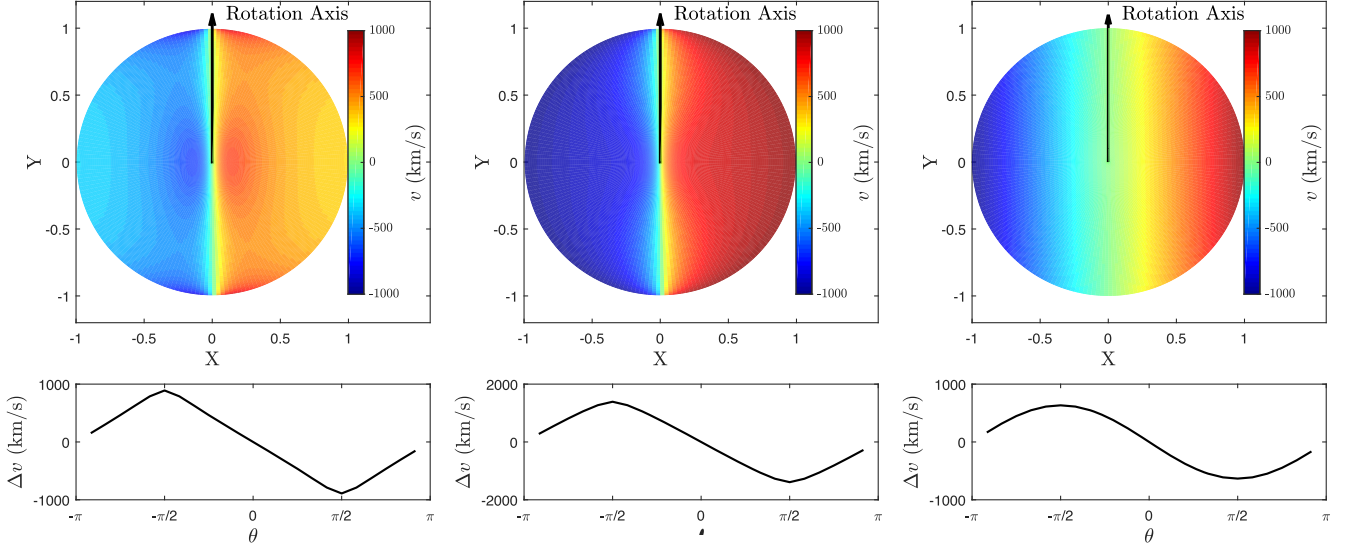


Figure 1. Left-hand panel: projected velocity map observed in a cluster rotating with a differential velocity curve according to equation (A2), where $c = 5$, $c_v = 10$, and $v_{\text{max}} = 1000 \text{ km s}^{-1}$, where $v_{\text{max}} = v(\lambda_0) = v_0/4$ as follows from equation (1). Middle and right-hand panels: same as the left-hand panel, but for rotation with a constant velocity of 1000 km s^{-1} , and a rigid body rotation with $\Omega = 1000 \text{ km s}^{-1}/r_{\text{vir}}$, respectively. In the lower panels, we plot the average velocity difference between the two semicircles defined by the dividing line, as a function of the angle θ ($\theta = \pi/2$ when the dividing line overlaps with the rotation axis).

between semicircles as a function of the angle of the dividing line; then, we measure the velocity in stripes parallel to the preferred rotation axis previously identified. Finally, we fit the observed rotation curve with equation (1) to derive the best-fitting values of v_0 and λ_0 .

3 DATA REDUCTION AND ANALYSIS

A2107 was observed with *Chandra* ACIS-I in VFaint mode on 2004 September 7 for a total exposure time of 35.4 ks (ObsID 4960). The data are reduced with CIAO 4.10, using the most updated *Chandra* Calibration Data base at the time of writing (CALDB 4.7.8). Unresolved sources within the ICM are identified with *wavdetect*, checked visually and eventually removed. The cluster appears as a strong, extended source centred on the aim point, and covering a significant fraction of each of the four CCDs of ACIS-I (see Fig. 2). The extraction radius we use to search for rotation is ~ 5 arcmin, corresponding to ~ 240 kpc. This roughly corresponds to $\sim 0.3r_{500}$, where the radius $r_{500} = 0.796$ Mpc has been estimated in Piffaretti et al. (2011) using the scaling relation between luminosity L_{500} and mass M_{500} . This radius has been chosen in order to maximize the S/N, and it includes a total of 6×10^4 net counts in the 0.5–7 keV band. Since the ICM emission is spread across the entire ACIS-I field of view, the background spectrum is extracted from the ‘blank sky’ files with the *blanksky* script.

The X-ray spectral analysis is performed with *Xspec* v12.9.1 (Arnaud 1996). A double *appec* thermal plasma emission model (Smith et al. 2001) is used to fit the ICM spectra. Galactic absorption is described by the model *tbabs* (Wilms, Allen & McCray 2000), where the Galactic HI column density is set to the value measured in Kalberla et al. (2005), which, at the position of A2107, is $n_{\text{H}} = 4.46 \times 10^{20} \text{ cm}^{-2}$. During the fit, the temperature, metallicity and normalization of the two thermal components are left free, while the redshift is unique for both. The use of a double *appec* model is required to avoid possible bias associated with the presence of multiple temperatures, which may reflect in a slight but relevant

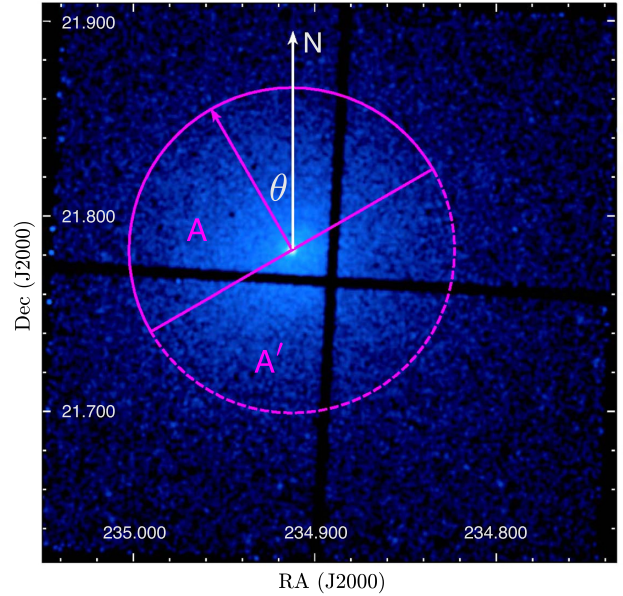


Figure 2. *Chandra* X-ray image of A2107 in the 0.5–7 keV energy range. We show the extraction regions and the definition of the position angle θ used to measure the projected velocity difference between semicircles and identify the preferred rotation axis. In the example shown in the figure, the axis (magenta arrow) with an orientation $\theta = 30^\circ$ divides the cluster into the two semicircles A and A’.

change of the centroid of the line emission complex if the spectral model is forced to have a single temperature. We also check that the use of the 2–7 keV band, as opposed to the full 0.5–7 keV band, gives consistent results on the redshift. Finally, since the measurement of n_{H} often has large uncertain and low spatial resolution, for example Starling et al. (2013) reports $n_{\text{H}} = 5.35 \times 10^{20} \text{ cm}^{-2}$ at the position of A2107, we also repeated the fits leaving the value of n_{H} free

Table 1. The *Chandra* data used in this work. Redshift values refer to optical estimates from the NASA/IPAC Extragalactic Data base (NED). In the fourth column we list the total exposure times after data reduction.

Cluster	z	<i>Chandra</i> ObsID	Exptime (ks)
A2107	0.041	4960	35.4
A2029	0.077	4977	77.1
A1689	0.183	5004, 6930, 7289, 7701	175.9

to vary, and find values ranging from 5.0 to $11.0 \times 10^{20} \text{ cm}^{-2}$ when analysing spectra extracted in annular bins at different radii. We do not consider this as a reliable indication for a larger value for n_{H} , mostly because the use of two *apec* models at different temperature increases the degeneracy with the Galactic absorption. Our main concern here is that leaving free the n_{H} parameter does not change significantly the best-fitting redshift. To summarize, this strategy allows us to keep under control the effects of colder gas and the complex interplay of different metallicity values at different temperatures, following the prescription discussed in Liu et al. (2015).

We also reduce the data of other two clusters observed with *Chandra*, selected in order to have a comparable data quality: A2029 and A1689. These two targets do not have reported claims of rotation and are considered relaxed clusters with regular morphology. We use these two targets as a basic control sample to test our strategy in searching and characterizing global rotation. In particular, we check whether a spurious rotation signature may appear as a result of our assumption. Clearly, a much larger control sample would be required to assess the statistical significance of a particular rotation measurement. This goes beyond the goal of this study. All the *Chandra* data used in this work, the ObsID and the total exposure time after data reduction are listed in Table 1.

4 MEASUREMENT OF GLOBAL ROTATION

To identify and quantify global rotation in our sources, we follow the two-step strategy described in Section 2. First, we identify the preferred axis of rotation, defined as the projected line that maximizes the velocity difference measured between the two semicircles. In practice, as shown in Fig. 2 we divide the cluster into two semicircles A and A' , with orientations θ and $\theta - \pi$, where θ is the angle from north counter-clockwise to the vertical axis of semicircle A . We perform our spectral analysis of the total emission extracted from the regions A and A' , and, in particular, we measure the best-fitting redshift. This value corresponds to the emission-weighted average redshift of all the ICM components observed along the line of sight in the selected region.

The measurement of ICM redshift and the assessment of its uncertainty have been described and applied in Liu et al. (2015, 2016) and Liu et al. (2018). From the difference of the two redshifts, we obtain the velocity difference between the two regions as $\Delta v = v_A - v_{A'} = c \times (z_A - z_{A'}) / (1 + z_{\text{cl}})$, where z_{cl} is the cluster redshift $z = 0.0412$ (Oegerle & Hill 2001). We repeat the measurement as a function of θ and sample Δv as a function of θ in the range $-\pi < \theta < \pi$. The $\Delta v - \theta$ plot is therefore made of points that are highly correlated, since nearby points come from spectral fits of overlapping regions. The resulting curve is then fitted with the function $\Delta v = \Delta v_{\text{max}} \cdot \cos(\theta - \theta_{\text{max}})$, where θ_{max} corresponds to the maximum velocity difference. The $\Delta v - \theta$ plot and the best-fitting function are shown in Fig. 3. The best-fitting parameters of the curve, obtained by a simple χ^2 fit, are $\Delta v_{\text{max}} = 3230 \pm 590 \text{ km s}^{-1}$

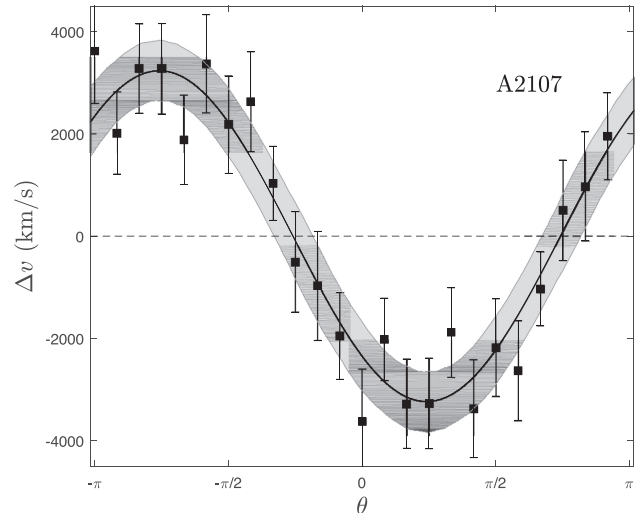


Figure 3. The $\Delta v - \theta$ plot of A2107 measured in steps of $\Delta\theta = 15^\circ$. The angle θ ranges from -180° to 180° , increasing counter-clockwise from north ($\theta = 0^\circ$) to east ($\theta = 90^\circ$), and decreasing clockwise from north to west ($\theta = -90^\circ$). Error bars correspond to 1σ uncertainty.

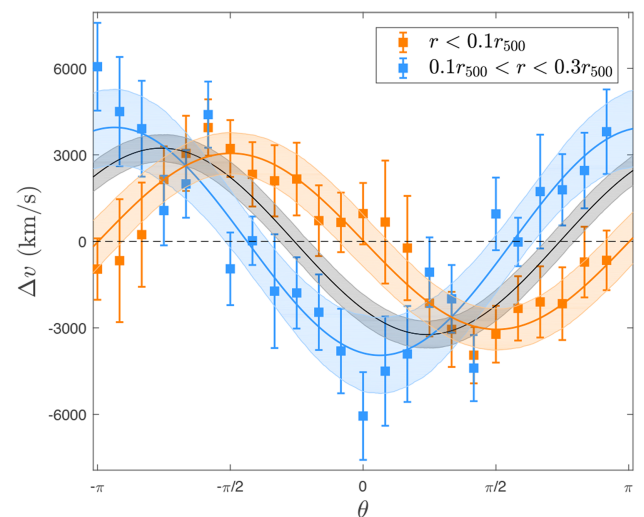


Figure 4. The velocity difference in A2107 measured across the rotation axis identified by θ at two different radial ranges. The black line shows the best-fitting curve in Fig. 3.

and $\theta_{\text{max}} = -137 \pm 13^\circ$, where the 1σ error bars are obtained by marginalizing with respect to the other parameter. This result by itself is not a probe of rotation, since a periodic curve is always obtained in any cluster with this method, simply because of noise, or because of the presence of some bulk motion in a particular region of the cluster. Clearly, a value of Δv_{max} significantly higher than zero constitutes a strong indication that the dynamical properties of the ICM are far from being consistent with the usual hydrostatic, no-rotation scenario.

A large uncertainty on the rotation axis may suggest that the shape of the curve is not in agreement with that expected from coherent rotation. To investigate this aspect, we repeat the same measurement using semi-annuli rather than semicircles, in order to search for rotation in shells. In Fig. 4 we show the rotation curves obtained with the same method but in different radial ranges, namely $r < 0.1r_{500}$ and $0.1r_{500} < r < 0.3r_{500}$. The best-fitting parameters

Table 2. The best-fitting parameters of the rotation curves corresponding to different radii.

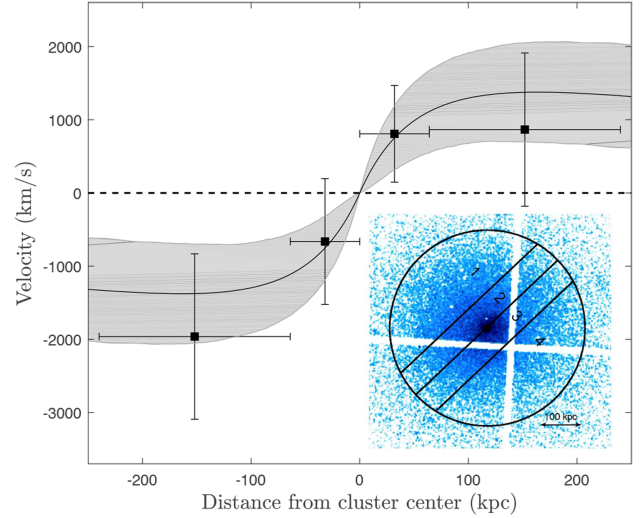
Radius	Δv_{\max} (km s^{-1})	θ_{\max}
0–0.3 r_{500}	3230 ± 590	$-137 \pm 13^\circ$
0–0.1 r_{500}	3050 ± 680	$-99 \pm 16^\circ$
0.1–0.3 r_{500}	3950 ± 1170	$-169 \pm 16^\circ$

of the rotation curves corresponding to different radii are listed in Table 2. We find that the two measurements of θ_{\max} obtained at different radii are inconsistent with each other at more than 3σ , showing that a complex, non-cylindrical rotation pattern may be more adequate to describe the results. This may well be a hint for the presence of asymmetric bulk motions, however the data quality is not high enough to further investigate this possibility. Therefore, in the following we will assume $\theta_{\max}^{\text{ICM}} = -137 \pm 13^\circ$.

After identifying the preferred rotation axis of the ICM and its uncertainty, we build the rotation curve by slicing the ICM into a number of independent linear regions parallel to the rotation axis. The average projected redshift is measured in each of these slices, whose size is chosen in order to have at least 10^4 net counts in the 0.5–7 keV band in each, and therefore a reasonable statistical error on the redshift. We identify four regions, where we compute the velocity difference with respect to the global redshift of the ICM, which is measured to be $z_X = 0.0393 \pm 0.0014$ by fitting the spectrum of the global emission within 5 arcmin. Incidentally, we note that the X-ray redshift is slightly more than 1σ lower than the optical redshift value $z_o = 0.0412$. This difference is not statistically significant, however it may be the hint of a disturbed ICM dynamics, possibly decoupled from the dynamics of the collisionless mass components (galaxies and dark matter), as may happen during mergers (see Liu et al. 2018). Moreover, the X-ray redshift we measure here is based on a smaller region of 5 arcmin radius, with respect to the 20 arcmin radius considered by Oegerle and Hill (1992), and Oegerle and Hill (2001) to compute the average optical redshift.

We can now compute the velocity of each slice as $v_i = c \times (z_i - z_X)/(1 + z_X)$, where i is the index of the slice. The result is shown in Fig. 5. If we fit these four points with the same rotation curve described in Section 2, we find $v_0 = 5500 \pm 2400 \text{ km s}^{-1}$, corresponding to $v_{\max} = 1380 \pm 600$, and $\lambda_0 = 165 \pm 110 \text{ kpc}$. The χ^2 value of the fit is below unity because of the large error bars ($\chi^2 = 0.48$), while the χ^2 value for no rotation is 5.79, which corresponds to rejection at a 95 per cent level for 3 degrees of freedom.

We repeat the same analysis on the two relaxed clusters A2029 and A1689, where no significant rotation is expected. In Fig. 6, we show the $\Delta v - \theta$ curves of these two clusters, where we do not find signatures of rotation. As already noticed, formally a rotation axis can be found for both clusters, but with large uncertainty, and on the basis of a non-significant maximum redshift difference. We proceed with the measurement of the rotation curve, slicing the clusters parallel to the rotation axis. The rotation curves are shown in the right-hand panel of Fig. 6. Both profiles are consistent with no rotation. Assuming no rotation in these two clusters results in χ^2 of 1.02 and 1.56 with 5 degrees of freedom. Clearly, we cannot exclude the presence of rotation in these clusters on the basis of our data, but we exclude a rotation signature with the same significance found for A2107.

**Figure 5.** Velocity gradient across the slices parallel to the rotation axis defined in Fig. 4. The solid line shows the best-fitting function and the shaded area shows the 1σ confidence interval.

We conclude that our spectral analysis of the ICM is consistent with a rotation reaching a maximum velocity of $1000\text{--}2000 \text{ km s}^{-1}$ at a radius between 100 and 300 kpc. The velocity difference between two sides of the cluster is significant at more than 2σ . We also find a null result in two regular clusters, showing that there are no obvious systematic effects in our analysis strategy that can mimic the presence of rotation, providing thus support to the capability of our analysis in finding velocity difference across the ICM.

5 DISCUSSION

Before discussing the implications of our findings, we rapidly review possible systematics that may affect our results. Uncertainties on the best-fitting redshift values due to calibration issues and fluctuation of the gain of CCDs as a function of the epoch of observation have been discussed in detail in Liu et al. (2015) and Liu et al. (2016). In this work, we only use a single observation, so the time variation of CCD is negligible. Calibration may also change as a function of the position on the CCD. We perform a quick check by computing the position of the Au $L\alpha$ and Ni $K\alpha$ fluorescent lines in the spectra obtained from the extraction regions used in our analysis and from the corners of the CCD. Within the statistical limits due to the modest exposure time we are not able to find any significant difference in the centroid of the lines in difference places. Despite we are not able to firmly rule out the presence of some gain variation across the CCD, we are nevertheless able to estimate its impact to be less than the current statistical error on our redshift measurements. We also refer to the extensive investigation on calibration issues on redshift measurement with *Chandra* presented in Liu et al. (2015), where we constrained these effects to be at maximum a 5–10 per cent of the typical statistical error, and therefore not relevant to our conclusions.

We also explore the impact of the uncertainty of background modelization on the redshift measurement. Because the background spectrum we used is generated from the *Chandra* ‘blank-sky’ files, its normalization in the hard energy range may not be appropriate for our observation. We conservatively consider a 10 per cent maximum variation in the normalization of the background spectrum, and

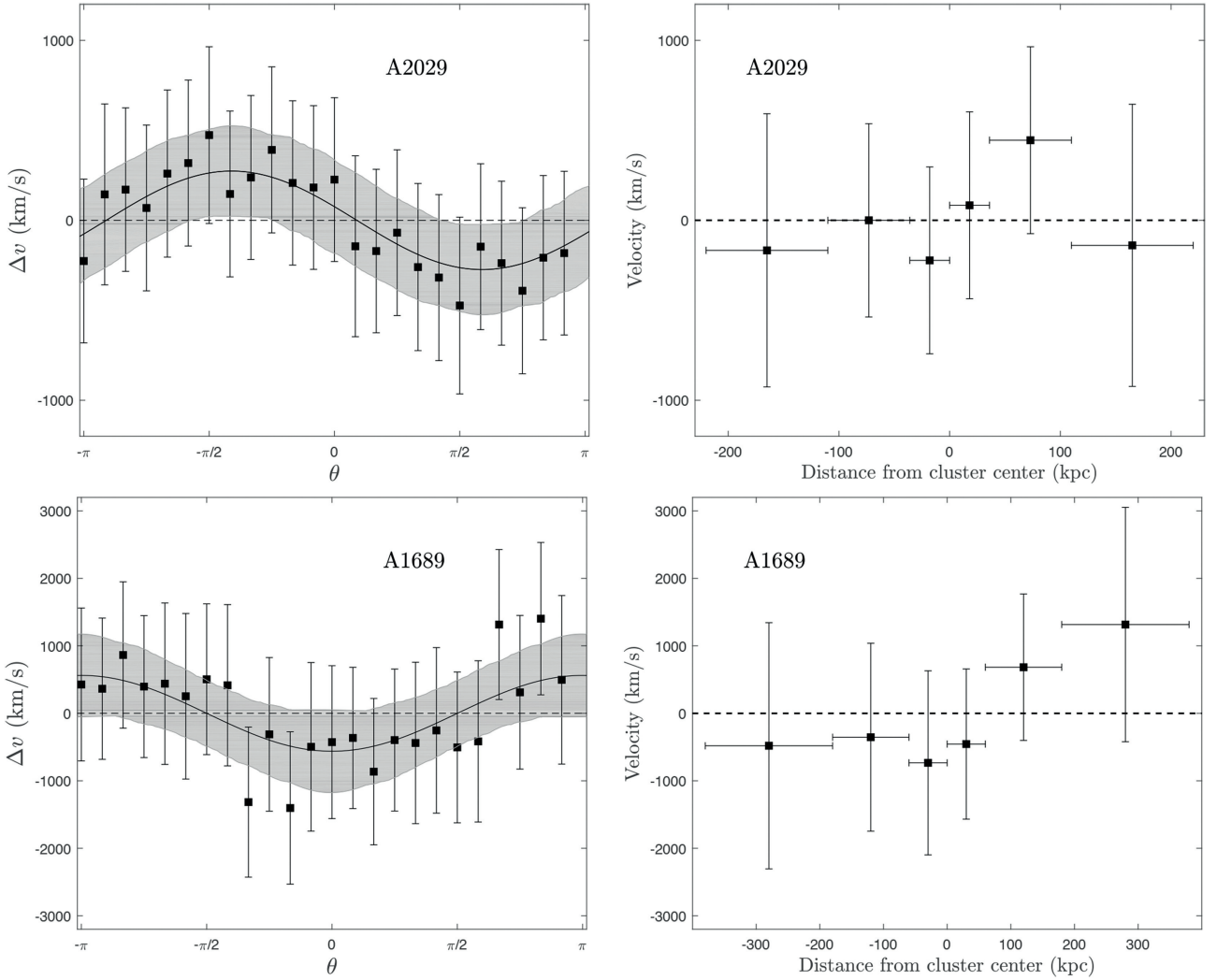


Figure 6. Results for the control sample A2029 and A1689. *Left:* $\Delta v - \theta$ curves. *Right:* Velocity gradient along the slices parallel to the rotation axis defined by the $\Delta v - \theta$ curve.

verify that this reflects in a fluctuation in redshift of the order of ~ 5 per cent, which is well below the statistical error, confirming that the redshift gradient shown in Fig. 5 is robust against uncertainties in the background modelization.

We then compare our results with the rotation identified by the spectroscopy of the member galaxies in Song et al. (2018). In this work, the orientations of the maximum velocity are measured in three different bins: $0 \text{ arcmin} \leq r < 20 \text{ arcmin}$, $20 \text{ arcmin} \leq r < 35 \text{ arcmin}$, and $35 \text{ arcmin} \leq r < 60 \text{ arcmin}$. Since the extraction radius in our X-ray analysis is only 5 arcmin, we compare our result with that of the [0 arcmin–20 arcmin] optical bin. We find that the rotation axis are significantly different, with $\theta_{\text{max}}^{\text{gal}} = 7 \pm 14^\circ$, and $\theta_{\text{max}}^{\text{ICM}} = -137 \pm 13^\circ$, with the corresponding momentum vectors pointing almost in opposite directions. In Fig. 7, where the X-ray surface brightness contours from *Chandra* are overlaid to the optical image of A2107 from the Sloan Digital Sky Survey, we also show the preferred rotation axis from the optical and X-ray data. Despite we are comparing rotation velocities estimated at different scales, we are surprised to find a rotation axis with a direction completely different from the optical one. It is not surprising to observe the ICM dynamically decoupled from the galaxies, however, in the case of

global rotation, we should have observed a consistent rotation axis. Incidentally, if we consider the 20–35 arcmin radial bin in Song et al. (2018) with $\theta_{\text{max}} = -150 \pm 36^\circ$, we find that the rotation axis of the galaxies and of the ICM are consistent within the statistical errors. Clearly, this may well be just a coincidence, and our findings seem to suggest that the velocity pattern is probably not uniform, and that the galaxies and ICM do not share the same projected velocity across the cluster.

Another critical aspect is the effect on the total mass measurement implied by the temperature profile and the measured rotation. The total mass without considering rotation is computed via the hydrostatic equation:

$$\frac{\nabla P}{\rho} = -\nabla \Phi = -\frac{GM(r)}{r^2}, \quad (2)$$

where ρ , P , and Φ denote the gas density, pressure, and the total gravitational potential, respectively. Inserting $P = nk_B T = \rho_g k_B T / (\mu m_p)$, the total mass within r is:

$$M(r) = -\frac{k_B T(r) r}{G \mu m_p} \left(\frac{d \ln \rho_g(r)}{d \ln r} + \frac{d \ln T(r)}{d \ln r} \right). \quad (3)$$

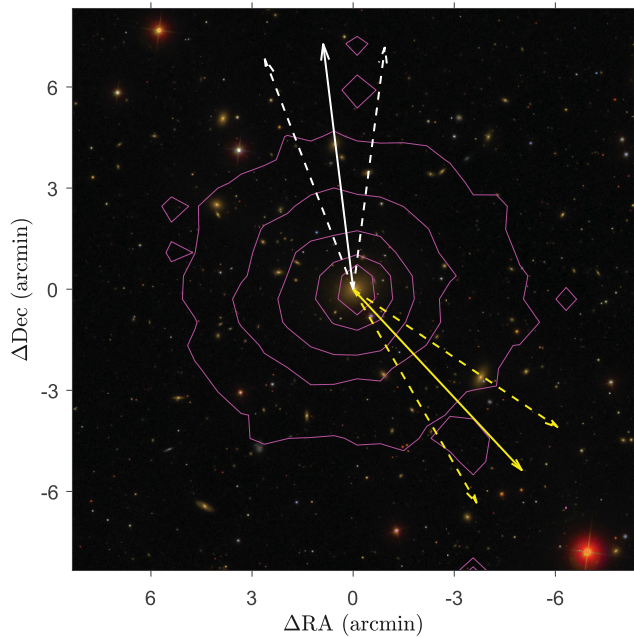


Figure 7. SDSS RGB image of A2107 obtained from g , r , i band images. Magenta contours correspond to isophotes in the *Chandra* X-ray image. White and yellow arrows mark the preferred direction of rotation of the member galaxies within 0–20 arcmin (from Song et al. 2018) and of the ICM, respectively. Dashed arrows show the 1σ uncertainty on the angle of the rotation axis.

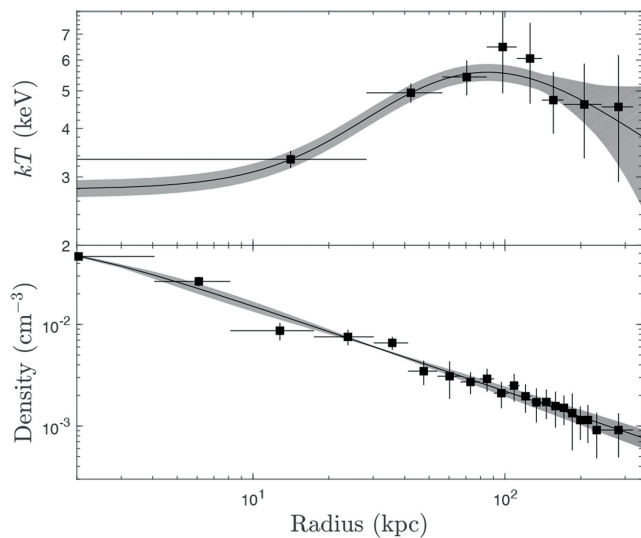


Figure 8. Deprojected temperature (upper panel) and density (lower panel) profiles of A2107.

We measure the deprojected temperature and density profiles using 8 and 20 bins, respectively, with the routine DSDEPROJ (see Sanders & Fabian 2007). We then fit the temperature profile with the model proposed by Vikhlinin et al. (2006), and the density profile with a single β model. The deprojected temperature and density profiles are shown in Fig. 8. The best-fitting functions are used to compute the logarithmic slopes in equation (3). The hydrostatic mass profile is shown in Fig. 9. With very large uncertainties in the outskirts, we measure a value of $(4.5 \pm 1.4) \times 10^{13} M_{\odot}$ at $r =$

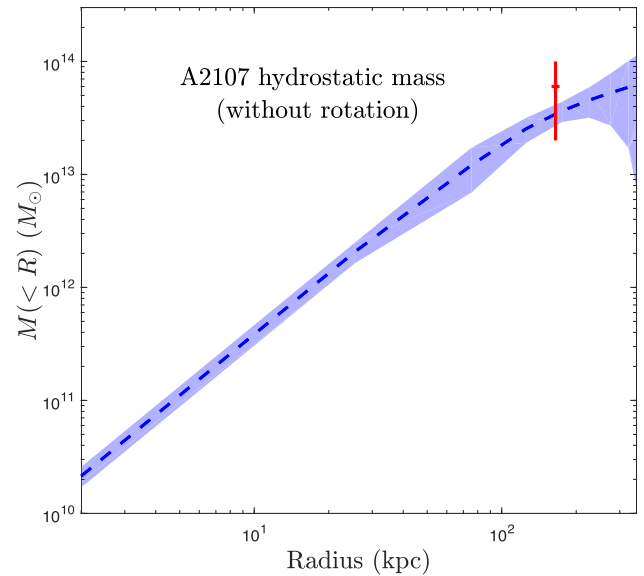


Figure 9. The hydrostatic mass profile of A2107 (without including the effect of global rotation) with 1σ uncertainty computed with bootstrapping shown as a shadowed area. The cross is the approximated mass-correction term due to rotation along the $z = 0$ plane at $\lambda_0 = 160$ kpc.

200 kpc, in agreement with the mass profile obtained from the galaxy velocity dispersion by Kalinkov et al. (2005).

If we consider hydrostatic equilibrium in presence of rotation, we are assuming that rotational motions do not affect motions along the radial direction. Therefore, we should consider a term proportional to $(v^2/\lambda)_{\text{rad}}$ in equation (3), which is the projection of the centripetal force on the radial direction at each point. A self-consistent treatment can be found in Bianconi et al. (2013). Here we do not make any attempt to solve for the ellipsoidal mass distribution implied by the presence of rotation and hydrostatic equilibrium. However, we can compute the mass term along the direction perpendicular to the rotation axis, which, at the radius λ_0 corresponds to a correction of $\sim 6 \times 10^{13} M_{\odot}$. From Fig. 9 it is possible to verify that this correction term is comparable, if not larger, to the hydrostatic mass computed in the assumption of no rotation at the same radius. This clearly shows that the spherical symmetry is inconsistent with such a large rotation. On the other hand, given the large uncertainties, if we consider the 2σ lower limit to the mass term due to rotation, we find a correction of the order of a few $10^{12} M_{\odot}$, which corresponds to ~ 10 per cent of the hydrostatic mass at the same radius, in better agreement with the cluster morphology.

The best-fitting value of v_{max} is therefore at variance with the regular and round isophotes of the surface brightness of A2107 that can be appreciated in Fig. 7. We fit the X-ray surface brightness distribution with a 2D elliptical β model, and get an ellipticity of 0.097, indicating an almost round morphology that, as shown, may be reconciled with the measured rotation only when assuming values lower by $\sim 2\sigma$ with respect to the best fit.

If we relax the hypothesis of hydrostatic equilibrium, we can consider a major merger scenario as opposed to rotation. This scenario is suggested by the measurement of an exceptionally high velocity of the BCG relative to the bulk of the galaxy population of $\sim 270 \text{ km s}^{-1}$ (Oegerle & Hill 1992). For some reason, however, this possible major merger along the line of sight is not observed in the galaxy distribution nor is associated with any disturbed morphology

in the X-ray image. In addition, the BCG is still perfectly centred on the cool core within a few arcsec, as shown in Fig. 7. On the other hand, the BCG is not active both in X-ray and in radio, an occurrence that, particularly in the radio, should be observed in the majority of cool cores (Sun 2009). A possible solution may be provided by an ongoing major merger along the line of sight in its early stages, when the ICM is already significantly decoupled from the bulk of the galaxy, including the BCG, and the cool core is still visible but is not ‘active’ anymore (in the sense that it does not feed the AGN in the BCG).

To summarize, the results obtained in this work do not allow us to conclude unambiguously that the ICM in A2107 is rotating to some degree. In particular, it is almost impossible with CCD data to distinguish a genuine rotation from disordered and asymmetric bulk motion, or from a major merger along the line of sight. Increasing the depth of the observation may help in reducing the statistical error on the measured redshift, an improvement that can be better achieved with CCD data from XMM–Newton, which has a significantly larger effective area with respect to *Chandra* and therefore it performs more efficiently in observations where high angular resolution is not mandatory. A better redshift map, in principle, can provide an unambiguous view of a rotation pattern. In particular, it will be possible to determine whether the rotation signature is due to a smooth pattern across the entire ICM distribution, or it is merely an effect of one or more mergers, with a patchy redshift map. However, spectral analysis of CCD data would improve rather slowly with increasing exposures, and therefore would require a large investment of observing time.

Another possible strategy is the observation with gratings at constrained angles. In this last case, the rotation (or the asymmetric bulk motion) should show up more clearly as a shift in the emission lines in the direction perpendicular to the dispersion, which should be aligned to the rotation axis. We remark that A2107 has the advantage of a relatively low temperature, so that several emission lines can be visible in the energy range probed by gratings. A real breakthrough in the study of the distribution of angular momentum at cluster scale, may be achieved in the next future only with the advent of X-ray bolometers, or, possibly, with better SZ data (as discussed in Cooray & Chen 2002).

6 CONCLUSIONS

In this work we define a strategy to search for signatures of rotation in CCD data, on the basis of a simple rotation model. We report the measurement of a possible rotation in the ICM of the cluster A2107, obtained through a spatially resolved measurement of the redshift inferred from the centroid of the iron emission line complex at 6.7 and 6.9 keV in *Chandra* ACIS-I spectra. We identify a preferred rotation axis, and find a significant velocity gradient compatible with a rotation pattern with maximum tangential velocity $v_{\max} = 1380 \pm 600 \text{ km s}^{-1}$ at a radius $\lambda_0 \sim 160 \text{ kpc}$.

If confirmed, this would be the first detection of ICM rotation. Although this work has been stimulated by the previous claims of rotation in A2107 obtained by Manolopoulou and Plionis (2017) and Song et al. (2018) on the basis of optical spectra of the member galaxies, our results differ both in the direction of the preferred rotation axis, and in the amplitude of the rotation curve. In particular, the high velocity associated with the ICM rotation in our data would be in conflict with the assumption of hydrostatic equilibrium and with the morphology of the cluster. We argue that an unnoticed off-centre major merger along the line of sight can be an alternative explanation of the dynamical status of A2107.

Therefore, our analysis confirms the peculiar dynamical nature of the otherwise regular cluster A2107, but is not able to provide a definitive answer to the rotation versus merger scenario. We argue that a discrimination among these two scenarios should wait for the next-generation X-ray facilities carrying X-ray bolometers on board, while some improvements can still be made with further CCD data and angle-constrained grating spectra, preferably with XMM–Newton. The measurement of ICM rotation is potentially relevant for investigation of the distribution of angular momentum at cluster scale, which is still a debated aspect of the gravitational growth of cosmic structures. Therefore, any insight that can be obtained on the basis of current X-ray facilities in the next years, particularly before XRISM, due to launch in the early 2020s, would be extremely useful to refine the analysis strategy in this field.

ACKNOWLEDGEMENTS

We thank the anonymous referee for a detailed and constructive report. We acknowledge financial contribution from the agreement ASI-INAF n.2017-14-H.O.

REFERENCES

- Allen S. W., Evrard A. E., Mantz A. B., 2011, *ARA&A*, 49, 409
 Arnaud K. A., 1996, in Jacoby G. H., Barnes J., eds, ASP Conf. Ser. Vol. 101, *Astronomical Data Analysis Software and Systems V*. Astron. Soc. Pac., San Francisco, p. 17
 Baldi A. S., De Petris M., Sembolini F., Yepes G., Lamagna L., Rasia E., 2017, *MNRAS*, 465, 2584
 Barret D. et al., 2018, Proc. SPIE Conf. Ser. Vol. 10699, *Space Telescopes and Instrumentation 2018: Ultraviolet to Gamma Ray*. Proceedings of SPIE, Bellingham, Washington USA, p. 15
 Bianconi M., Ettori S., Nipoti C., 2013, *MNRAS*, 434, 1565
 Biffi V. et al., 2016, *ApJ*, 827, 14
 Biffi V., Dolag K., Böhringer H., 2011, *MNRAS*, 413, 573
 Borgani S., Fabjan D., Tornatore L., Schindler S., Dolag K., Diaferio A., 2008, *Space Sci. Rev.*, 134, 379
 Cavaliere A., Fusco-Femiano R., 1976, *A&A*, 49, 137
 Cooray A., Chen X., 2002, *ApJ*, 573, 43
 Eckert D. et al., 2019, *A&A*, 621, 11
 Fujita Y., Sarazin C. L., Sivakoff G. R., 2006, *PASJ*, 58, 131
 Ghirardini V., Ettori S., Eckert D., Molendi S., Gastaldello F., Pointecouteau E., Hurier G., Bourdin H., 2018, *A&A*, 614, 22
 Girardi M., Escalera E., Fadda D., Giuricin G., Mardirossian F., Mezzetti M., 1997, *ApJ*, 482, 41
 Guainazzi M., Tashiro M. S., 2018, preprint (arXiv:1807.06903)
 Hitomi Collaboration, 2016, *Nature*, 535, 117
 Hwang H. S., Lee M. G., 2007, *ApJ*, 662, 236
 Kalberla P. M. W., Burton W. B., Hartmann D., Arnal E. M., Bajaja E., Morras R., Pöppel W. G. L., 2005, *A&A*, 440, 775
 Kalinkov M., Valchanov T., Valtchanov I., Kuneva I., Dissanska M., 2005, *MNRAS*, 359, 1491
 Kravtsov A. V., Borgani S., 2012, *ARA&A*, 50, 353
 Lau E. T., Kravtsov A. V., Nagai D., 2009, *ApJ*, 705, 1129
 Liu A., Yu H., Tozzi P., Zhu Z.-H., 2015, *ApJ*, 809, 27
 Liu A., Yu H., Tozzi P., Zhu Z.-H., 2016, *ApJ*, 821, 29
 Liu A., Yu H., Diaferio A., Tozzi P., Hwang H. S., Umetsu K., Okabe N., Yang L.-L., 2018, *ApJ*, 863, 102
 Manolopoulou M., Plionis M., 2017, *MNRAS*, 465, 2616
 Materne J., Hopp U., 1983, *A&A*, 124, L13
 Mitchell M. A., He J.-h., Arnold C., Li B., 2018, *MNRAS*, 477, 1133
 Oegerle W. R., Hill J. M., 1992, *AJ*, 104, 2078
 Oegerle W. R., Hill J. M., 2001, *AJ*, 122, 2858
 Parekh V., van der Heyden K., Ferrari C., Angus G., Holwerda B., 2015, *A&A*, 575, 28

- Piffaretti R., Arnaud M., Pratt G. W., Pointecouteau E., Melin J.-B., 2011, *A&A*, 534, 18
- Rines K. J., Geller M. J., Diaferio A., Hwang H. S., 2016, *ApJ*, 819, 63
- Rosati P. et al., 2014, *Messenger*, 158, 48
- Sanders J. S., Fabian A. C., 2007, *MNRAS*, 381, 1381
- Schmidt F., Vikhlinin A., Hu W., 2009, *Phys. Rev. D*, 80, 083505
- Smith R. K., Brickhouse N. S., Liedahl D. A., Raymond J. C., 2001, *ApJ*, 556, L91
- Song H., Hwang H. S., Park C., Smith R., Einasto M., 2018, *ApJ*, 869, 124
- Starling R. L. C., Willingale R., Tanvir N. R., Scott A. E., Wiersema K., O'Brien P. T., Levan A. J., Stewart G. C., 2013, *MNRAS*, 431, 3159
- Sun M., 2009, *ApJ*, 704, 1586
- Takahashi T. et al., 2018, *J. Astron. Telesc. Instrum. Sys.*, 4, 021402
- Tovmassian H. M., 2015a, *Astrophysics*, 58, 328
- Tovmassian H. M., 2015b, *Astrophysics*, 58, 471
- Vikhlinin A., Kravtsov A., Forman W., Jones C., Markevitch M., Murray S., Van Speybroeck L., 2006, *ApJ*, 640, 691
- Wilms J., Allen A., McCray R., 2000, *ApJ*, 542, 914
- Yu H., Tozzi P., Borgani S., Rosati P., Zhu Z.-H., 2011, *A&A*, 529, 13
- Zhuravleva I., Churazov E., Kravtsov A., Sunyaev R., 2012, *MNRAS*, 422, 2712
- Baldi A. S., De Petris M., Sembolini F. et al., 2018, *MNRAS*, 479, 4028

APPENDIX A: PROJECTED VELOCITY MAP OF THE ICM WITH A GENERIC ROTATION CURVE

To compute the projected velocity map for a generic rotation curve in a spherical ICM, we need to convolve a cylindrical rotation curve with a spherical distribution of ICM density. As noted in Section 2, we do not solve for a self-consistent hydrostatic and rotating ICM distribution in a fixed dark matter potential well, so we simply assume the case of a spherical symmetry for the ICM distribution despite its rotation. This assumption can be considered a fair description only when the rotational support is a minor correction to the pressure support at each radius. Our treatment here is meant only to give us a guideline on how to design the analysis strategy to recover the rotation curve.

The projected velocity is measured from the redshift of the iron complex emission line, which, at any position on the sky, is the emission-weighted value of the centroid of the lines emitted by each ICM component intercepted by the line of sight. To compute the emission-weighted quantity along the line of sight, we consider a cylindrical reference system with the z -axis pointing towards the observer, while the rotation axis is one of the two axis on

the plane of the sky. With this choice, the transformation from spherical coordinate r , θ , and ϕ (to describe the ICM properties) to the cylindrical coordinates ρ , θ , and z (to describe the projected redshift map) assume the convenient form $\rho = r\sin\phi$, $\theta = \theta$, and $z = r\cos\phi$.

We consider a generic rotation curve that depends only on the distance from the rotation axis λ , and it is characterized by an overall normalization and a scalelength λ_0 . The velocity perpendicular to the vector $\hat{\lambda}$ is thus $v(v_0, \lambda, \lambda_0)$.

The distance from the rotation axis reads

$$\lambda = \sqrt{(\rho \times \cos\theta)^2 + z^2}. \quad (\text{A1})$$

The velocity projected along the line of sight is therefore $v_{\text{los}} = v(v_0, \lambda, \lambda_0) \times \cos\alpha$, where α is the angle between the velocity vector and the line of sight. We can show that we also have $\cos\alpha = \rho \cos\theta / \lambda$. If we use a generic weighting function $W(\rho, \theta, z)$, we can express the observed v_{los} as

$$v_{\text{los}}(\rho, \theta) = \frac{\int W(\rho, \theta, z) \cdot v(v_0, \lambda, \lambda_0) \cdot \frac{\rho \cos\theta}{\lambda} dz}{\int W(\rho, \theta, z) dz}, \quad (\text{A2})$$

where λ depends on ρ , θ , and z through equation (A1), and the integral is performed over the range $-\sqrt{R_v^2 - \rho^2} < z < \sqrt{R_v^2 - \rho^2}$, with R_v being the virial radius. For example, if we assume the velocity curve described in Section 2, an isothermal ICM with a uniform metallicity and a single β model for the ICM 3D density distribution, with $\beta = 2/3$ for simplicity, we obtain the following expression:

$$v_{\text{los}}(\rho, \theta) = v_0 c_v \rho \cos\theta \frac{\int_{-\sqrt{1-\rho^2}}^{\sqrt{1-\rho^2}} \frac{dz}{(1+c^2(\rho^2+z^2))^2(1+c_v\sqrt{\rho^2\cos^2\theta+z^2})^2}}{\int_{-\sqrt{1-\rho^2}}^{\sqrt{1-\rho^2}} \frac{dz}{(1+c^2(\rho^2+z^2))^2}}, \quad (\text{A3})$$

where the two parameters describing the scalelength are defined as $c = R_v/R_c$ and $c_v = R_v/\lambda_0$, and the variables ρ and z have been rescaled by the virial radius R_v , and therefore range in the interval (0,1). This formula is valid for a rotation axis on the plane of the sky and it has been used to generate the velocity map in the left-hand panel of Fig. 1. Maps with different rotation curves can be obtained simply by substituting the curve function $v(v_0, \lambda, \lambda_0)$.

This paper has been typeset from a $\text{\TeX}/\text{\LaTeX}$ file prepared by the author.