



Publication Year	2015
Acceptance in OA	2020-03-16T11:50:00Z
Title	The Interstellar Medium and Feedback in the Progenitors of the Compact Passive Galaxies at $z \sim 2$
Authors	Williams, Christina C., Giavalisco, Mauro, Lee, Bomee, Tundo, Elena, Mobasher, Bahram, Nayyeri, Hooshang, Ferguson, Henry C., Koekemoer, Anton, Trump, Jonathan R., CASSATA, PAOLO, Dekel, Avishai, Guo, Yicheng, Lee, Kyoung-Soo, PENTERICCI, Laura, Bell, Eric F., CASTELLANO, MARCO, Finkelstein, Steven L., FONTANA, Adriano, GRAZIAN, Andrea, Grogin, Norman, Kocevski, Dale, Koo, David C., Lucas, Ray A., Ravindranath, Swara, SANTINI, Paola, VANZELLA, Eros, Weiner, Benjamin J.
Publisher's version (DOI)	10.1088/0004-637X/800/1/21
Handle	http://hdl.handle.net/20.500.12386/23264
Journal	THE ASTROPHYSICAL JOURNAL
Volume	800

THE INTERSTELLAR MEDIUM AND FEEDBACK IN THE PROGENITORS OF THE COMPACT PASSIVE GALAXIES AT $z \sim 2$

CHRISTINA C. WILLIAMS^{1,2}, MAURO GIAVALISCO¹, BOMEEL LEE¹, ELENA TUNDO³, BAHRAM MOBASHER⁴, HOOSHANG NAYYERI⁴,
HENRY C. FERGUSON⁵, ANTON KOEKEMOER⁵, JONATHAN R. TRUMP^{6,16}, PAOLO CASSATA⁷, AVISHAI DEKEL⁸, YICHENG GUO⁹,
KYOUNG-SOO LEE¹⁰, LAURA PENTERICCI¹¹, ERIC F. BELL¹², MARCO CASTELLANO¹¹, STEVEN L. FINKELSTEIN¹³,
ADRIANO FONTANA¹¹, ANDREA GRAZIAN¹¹, NORMAN GROGIN⁵, DALE KOCEVSKI¹⁴, DAVID C. KOO⁹, RAY A. LUCAS⁵,
SWARA RAVINDRANATH⁵, PAOLA SANTINI¹¹, EROS VANZELLA¹⁵, AND BENJAMIN J. WEINER²

¹ Department of Astronomy, University of Massachusetts, 710 North Pleasant Street, Amherst, MA 01003, USA; ccwilliams@email.arizona.edu

² Steward Observatory, 933 N. Cherry Ave., University of Arizona, Tucson, AZ 85721, USA

³ INAF, Osservatorio Astrofisico di Firenze, Largo Enrico Fermi 5, I-50125, Firenze, Italy

⁴ Department of Physics and Astronomy, University of California, Riverside, 900 University Avenue, Riverside, CA 92521, USA

⁵ Space Telescope Science Institute, 3700 San Martin Boulevard, Baltimore, MD 21218, USA

⁶ Department of Astronomy and Astrophysics, The Pennsylvania State University, University Park, PA 16802

⁷ Instituto de Física y Astronomía, Facultad de Ciencias, Universidad de Valparaíso, Gran Bretaña 1111, Valparaíso, Chile

⁸ Racah Institute of Physics, The Hebrew University, Jerusalem 91904, Israel

⁹ UCO/Lick Observatory, Department of Astronomy and Astrophysics, University of California, Santa Cruz, CA 95064, USA

¹⁰ Department of Physics, Purdue University, 525 Northwestern Avenue, West Lafayette, IN 47907, USA

¹¹ INAF - Osservatorio Astronomico di Roma, via Frascati 33, 00040 Monte Porzio Catone, Italy

¹² Department of Astronomy, University of Michigan, 500 Church Street, Ann Arbor, MI 48109, USA

¹³ Department of Astronomy, University of Texas, Austin, USA

¹⁴ Department of Physics and Astronomy, Colby College, Waterville, ME, 04901, USA

¹⁵ INAF - Osservatorio Astronomico di Bologna, via Ranzani 1, I-40127 Bologna, Italy

Received 2014 July 4; accepted 2014 December 8; published 2015 February 5

ABSTRACT

Quenched galaxies at $z > 2$ are nearly all very compact relative to $z \sim 0$, suggesting a physical connection between high stellar density and efficient, rapid cessation of star-formation. We present rest-frame UV spectra of Lyman-break galaxies (LBGs) at $z \sim 3$ selected to be candidate progenitors of the quenched galaxies at $z \sim 2$ based on their compact rest-frame-optical sizes and high Σ_{SFR} . We compare their UV properties to those of more extended LBGs of similar mass and star-formation rate (non-candidates). We find that candidate progenitors have faster bulk interstellar medium (ISM) gas velocities and higher equivalent widths of interstellar absorption lines, implying larger velocity spread among absorbing clouds. Candidates deviate from the relationship between equivalent widths of Ly α and interstellar absorption lines in that their Ly α emission remains strong despite high interstellar absorption, possibly indicating that the neutral H I fraction is patchy, such that Ly α photons can escape. We detect stronger C IV P-Cygni features (emission and absorption) and He II emission in candidates, indicative of larger populations of metal-rich Wolf–Rayet stars compared to non-candidates. The faster bulk motions, broader spread of gas velocity, and Ly α properties of candidates are consistent with their ISM being subject to more energetic feedback than non-candidates. Together with their larger metallicity (implying more evolved star-formation activity) this leads us to propose, if speculatively, that they are likely to quench sooner than non-candidates, supporting the validity of selection criteria used to identify them as progenitors of $z \sim 2$ passive galaxies. We propose that massive, compact galaxies undergo more rapid growth of their stellar mass content, perhaps because the gas accretion mechanisms are different, and quench sooner than normally sized LBGs at these (early) epochs.

Key words: galaxies: evolution – galaxies: formation – galaxies: high-redshift – galaxies: ISM

1. INTRODUCTION

The quenching of star-formation is a major event in the evolution of passively evolving galaxies; on rapid timescales, the star-formation ends over the full volume of the galaxy (Renzini 2006), dust and cold gas contents are removed, and the UV/optical spectral energy distribution (SED) evolves from blue to red. The combination of these processes gives rise to the well known Hubble sequence, and galaxies appear to follow these characteristics even 10 Gyr ago (Franx et al. 2008; Kriek et al. 2009a; Toft et al. 2009; Wuyts et al. 2011; Cameron et al. 2011; Szomoru et al. 2011; Wang et al. 2012; Lee et al. 2013a). However, star-formation quenching remains one of the most poorly understood physical processes affecting galaxies at any epoch in the universe’s history. While there is abundant

evidence that both the baryonic and halo masses, and also the environment of galaxies correlate with the cessation of star-formation (Kauffmann et al. 2003, 2004; Baldry et al. 2004; Hogg et al. 2004; Blanton et al. 2005; Thomas et al. 2005; Peng et al. 2010, 2012; Woo et al. 2013; Tal et al. 2014), there is a stark lack of understanding of the physical processes that underpin these observed trends, and how the fuel for star-formation, cold gas, in galaxies is affected.

Deep surveys such as the Great Observatories Origins Deep Survey (GOODS; Giavalisco et al. 2004) and the Cosmic Assembly Near-infrared Deep Extragalactic Legacy Survey (CANDELS; Grogin et al. 2011; Koekemoer et al. 2011) have, over the last decade, revealed a population of massive, quenched galaxies, very early in the universe’s history ($z \sim 2$; e.g., Franx et al. 2003; Cimatti et al. 2004, 2006; Glazebrook et al. 2004; Daddi et al. 2005; Trujillo et al. 2006; Bundy et al. 2006; van

¹⁶ Hubble Fellow.

der Wel et al. 2008; van Dokkum et al. 2008; Fontana et al. 2009; Saracco et al. 2009; Bezanson et al. 2009; Cassata et al. 2011, 2013; Guo et al. 2012a). Their spectra, colors and specific star-formation rates (sSFRs) imply star-formation must have been quenched for at least ~ 1 Gyr prior to observation (Kriek et al. 2006, 2009b; Onodera et al. 2012; Kaviraj et al. 2013; Gobat et al. 2012; van de Sande et al. 2013; Whitaker et al. 2013). The remarkable thing about these quenched galaxies (besides the fact that they have already assembled such high stellar mass and also quenched star-formation only ~ 2 Gyr after the big bang), is that they are significantly more compact relative to local passive galaxies (e.g., Daddi et al. 2005; Zirm et al. 2007; Toft et al. 2007; van Dokkum et al. 2008, 2010; Damjanov et al. 2009; Buitrago et al. 2008; Muzzin et al. 2009; Huang et al. 2013b; Davari et al. 2014). Nearly all ($>80\%$) quenched galaxies at $z > 1.5$ are more compact in stellar density than the lower 1σ of passive galaxies at $z \sim 0$ ($\Sigma_{M^*} > 3 \times 10^9 M_\odot \text{ kpc}^{-2}$; Cassata et al. 2011, 2013). More than 70% are ultra-compact ($\Sigma_{M^*} > 1.2 \times 10^{10} M_\odot \text{ kpc}^{-2}$). Very few local analogs to such galaxies exist (Trujillo et al. 2009; Taylor et al. 2010; Shih & Stockton 2011; although see Poggianti et al. 2013; Stockton et al. 2014; Trujillo et al. 2014), and even intermediate redshift passive galaxies appear structurally different (Hsu et al. 2014; Damjanov et al. 2014). Observations indicate this compactness is real, with large dynamical masses measured from velocity dispersions (van Dokkum et al. 2009; Cappellari et al. 2009; Newman et al. 2010; van de Sande et al. 2011; Toft et al. 2012; Bezanson et al. 2013; Belli et al. 2014), and deep high-resolution near-IR *Hubble Space Telescope* (*HST*) images and stacks confirming the small sizes (van Dokkum et al. 2008; Szomoru et al. 2012; Williams et al. 2014). Such high masses and steep light profiles suggest that highly dissipative gaseous processes must have been behind the stellar mass assembly.

These galaxies pose extreme challenges to simulations of galaxy formation. Simulated gas-rich mergers fail to reproduce the steep light profiles of these galaxies (Wuyts et al. 2010; Williams et al. 2014), primarily because the stellar components in the merger progenitors cannot effectively dissipate angular momentum (Hopkins et al. 2008, 2013). Furthermore, observed starburst galaxies that are thought to be gas-rich mergers due to their extreme star-formation rates (SFRs), dust contents, and irregular morphologies, appear morphologically distinct from the compact passive galaxies (CPGs), due to their extended half-light radii and clumpy morphology (Swinbank et al. 2010; Mosleh et al. 2011; Targett et al. 2011, 2013; Bussmann et al. 2012; Kartaltepe et al. 2012; Guo et al. 2012b; M. Giavalisco et al., in preparation). Transforming these extended starbursts into compact passive galaxies would require significant changes in morphology and gravitational potential within 1 Gyr, and it is unclear what mechanism would be capable of this. Alternatively, it has been argued that accretion of gas from the intergalactic medium (IGM; e.g., Birnboim & Dekel 2003; Kereš et al. 2005; Dekel & Birnboim 2006) can produce compact galaxies through the dissipation of angular momentum, e.g., through disk instabilities (Dekel et al. 2009, 2013; Bournaud et al. 2011). These gaseous disks may be large (e.g., $R_e \sim 6\text{--}8$ kpc; Dekel et al. 2009; Tacconi et al. 2010, 2013), and therefore the star-formation timescale in the accreted gas must be larger than the gas dissipation timescale in order to leave a negligible stellar halo (Dekel & Burkert 2014). Direct accretion of gas from the IGM, however, could deposit onto galaxies through filamentary configurations such that angular momentum is largely canceled,

allowing star formation to proceed in very compact regions of galaxies (Sales et al. 2012; Johansson et al. 2012; Cen 2014). In this case massive compact galaxies would mark the sites of galaxy formation by cold accretion at high redshift. The disappearance of these objects, either star-forming (e.g., van der Wel et al. 2014; van Dokkum et al. 2014) or passive (Cassata et al. 2011, 2013; Damjanov et al. 2014) at low redshift is consistent with the idea that cold accretion is shut down at $z \lesssim 2$ (Kereš et al. 2005; Dekel & Birnboim 2006; Kereš et al. 2009).

The fact that these massive and compact galaxies dominate the population of quenched galaxies at high redshift (Cassata et al. 2011, 2013) strongly suggests a physical connection between very high stellar density and the effective and rapid cessation of star formation. Indeed, quiescence is observed to be highly correlated with compact morphologies (Bell et al. 2012; Cheung et al. 2012). This hypothesis is consistent with the observation that equally compact galaxies that still form stars virtually disappear from the universe by $z < 1$, and has prompted analyses of compact star-forming galaxies (SFGs) as progenitors of these CPGs based on a diversity of selection criteria (Patel et al. 2013; Barro et al. 2013; Stefanon et al. 2013; Williams et al. 2014). To what extent these studies overlap in their sample selections is unclear, and detailed analysis of the light profiles of the samples is necessary to understand if their stellar distributions are indeed consistent with that of the descendant CPGs. The high fraction of active galactic nucleus (AGN) detection in some samples ($\sim 50\%$; e.g., Barro et al. 2013) makes it unclear whether it is the AGN in the galaxy that is responsible for the quenching, or the compactness of the stellar distribution. Diamond-Stanic et al. (2012), although studying compact SFGs at lower redshifts, find quenching is likely in compact SFGs without the necessity of AGNs.

The implied evolutionary connection between compact SFGs and CPGs illustrates the need to study the properties of compact SFGs in detail. A recent study by Nelson et al. (2014) provided evidence for this evolutionary connection, with the discovery of a massive, compact SFG whose morphology, mass, and (gas) velocity dispersion match that of the CPGs, without indication of AGN activity. Recently, Williams et al. (2014) identified plausible “candidate” progenitors of these CPGs among compact Lyman-break galaxies (LBGs) at $z \sim 3.4$, based on their morphological similarity, and also their stellar masses and SFRs, such that they would be capable of matching the selection criteria of CPGs by the time the universe evolves to $z \sim 1.5$. Their co-moving number density is similar to those of the CPGs, consistent with the suggestion that massive compact LBGs can evolve into the first quiescent systems, and the intensely star-forming, but much larger, sub-millimeter galaxies (e.g., Toft et al. 2014) are not the only avenue to such early quenching (Stark et al. 2009; Williams et al. 2014). These candidate progenitors are generally small in radius, and deep stacks show steep and compact stellar distributions, very similar to those of the CPG at $z \sim 2$. Furthermore, their rest-frame UV SED appears redder compared to more normal SFGs (in terms of mass and size), while having consistent colors at rest-frame optical-near IR (Williams et al. 2014). This shows that the redder UV indicated a more evolved stellar population than other LBGs.

These trends give rise to a number of unanswered questions. Could the dense stellar distribution in CPGs have formed through some dissipative gaseous process, such as accretion of cold gas from the IGM (Birnboim & Dekel 2003; Kereš et al. 2005; Dekel & Birnboim 2006; Sales et al. 2012; Johansson et al.

2012; Cen 2014)? What differentiates these compact galaxies such that they are so small and dense relative to the rest of SFGs at early epochs? What is the physical process that quenches their star formation so early, and is it directly related to stellar density? Therefore, it is imperative to search for evidence (if any) that the physical conditions in these compact galaxies are particularly hostile to continued star-formation.

The phenomenology of feedback in SFGs has been extensively documented (e.g., Shapley et al. 2003; Martin 2005; Tremonti et al. 2007; Weiner et al. 2009; Martin & Bouché 2009; Rubin et al. 2010, 2014; Steidel et al. 2010; Genzel et al. 2011; Heckman et al. 2011; Newman et al. 2012; Förster Schreiber et al. 2014, among others). However, how feedback depends on various properties (e.g., SFR, stellar density, surface density of star-formation) remains to be fully empirically understood. Feedback in the form of bulk outflows is observed ubiquitously in high-redshift SFGs, and high-velocity outflows have been observed in very compact starbursts, presumably due to the high surface densities of star-formation (Diamond-Stanic et al. 2012).

Recently, Law et al. (2012) studied the correlations between rest-frame optical morphology of galaxies, and their UV spectroscopic properties. The authors found that smaller galaxies ($R_e < 2$ kpc) are more likely to exhibit both Ly α in emission and more blue shifted interstellar absorption line centroids, suggesting a larger fraction of the gas appears outflowing in the smaller sized galaxies, as opposed to the larger fraction of gas at zero velocity in the larger galaxies. The presence of more zero velocity gas would imply that a larger fraction of the gas in large galaxies is not outflowing or as energized kinematically. The interpretation is that the feedback in larger galaxies is less effective in energizing the interstellar medium (ISM) gas, thus increasing the optical depth of gas at rest with respect to the galaxy, bringing absorption line centroids closer to the systemic velocity and diminishing the ability for Ly α to escape (Law et al. 2012).

Motivated additionally by these recent findings that galaxy morphology correlates with spectroscopic properties such as velocity spread of interstellar absorption line centroids, with this study we aim to characterize the nature of the quenching mechanism(s) affecting compact galaxies. This study presents a comparative analysis of spectroscopy of “candidate” star-forming progenitors of CPGs, compared with the properties of normal SFGs at the same epoch. In Section 2, we present the LBG samples at $z \sim 3.4$ and their spectroscopy, in Section 3 we present the results of this comparative analysis, and in Section 4, we discuss the implications of our findings in the context of star-formation quenching at high-redshift. Throughout this paper we assume a cosmology with $\Omega_\Lambda = 0.7$, $\Omega_m = 0.3$, and $H_0 = 70 \text{ km s}^{-1} \text{ Mpc}^{-1}$.

2. DATA

2.1. The LBG Samples

The galaxies discussed here are the LBG samples at $z \sim 3.4$ presented in Williams et al. (2014). These LBGs are z -band selected from the GOODS survey (Giavalisco et al. 2004), and are found over an area of 113 arcmin^2 from the GOODS-South field *HST*/WFC3 imaging from CANDELS (Grogin et al. 2011; Koekemoer et al. 2011). Through simulations we established our sample is 90% complete with $z \leq 26.5$ for galaxies of $< 0''.3$ half-light radius (Huang et al. 2013a). We measure multi-wavelength photometry using the object template-fitting method (TFIT; Laidler et al. 2007) software, which includes U -band

imaging from the Visible Multiobject Spectrograph (VIMOS) on the Very Large Telescope (VLT; Nonino et al. 2009), *HST*/ACS B , V , i , z -band, *HST*/WFC3 J , H -band, VLT/ISAAC K_s photometry (Retzlaff et al. 2010), and *Spitzer*/IRAC 3.6, 4.5, and 5.7 μm imaging (M. Dickinson et al., in preparation). The details of the construction of multi-wavelength photometry are discussed in Guo et al. (2013). Measurements of galaxy properties for the LBG samples using the multi-wavelength photometry assume a Salpeter initial mass function (IMF), and is described in Guo et al. (2012a) and Williams et al. (2014). Note that the specific assumption of an IMF here is relatively inconsequential, since the comparison between the two types of galaxies is done at fixed stellar mass. Changing the shape of the IMF will result in different absolute values of stellar mass, but comparisons between the two flavors of galaxies would remain unchanged. We use GALFIT (Peng et al. 2002) to fit Sersic models to the WFC3 H -band images of the galaxies (rest-frame 3600 \AA at $z \sim 3.4$) from which we measure half-light radii (the sample are bright, $H < 25$, which ensures robust morphological measurements). A detailed description of these measurements and also the selection of the LBG samples are presented in Sections 2 and 3 of Williams et al. (2014), and we briefly outline the procedure here.

This sample of LBGs was split into plausible “candidate” progenitors of CPGs, and “non-candidate” LBGs as described in Williams et al. (2014). The selection of candidate progenitors is based on evidence that any star-forming progenitors must also be compact, since merging and accretion tend to increase the sizes of galaxies (e.g., Hopkins et al. 2008). Therefore to identify candidate progenitors, we require that they be of similar size and morphology as the CPGs, and also have high enough SFR that if they quench soon after observation they will meet the CPG selection criteria (Cassata et al. 2013). This sample of CPGs is selected from CANDELS photometry to have low specific SFRs ($< 10^{-2} \text{ Gyr}^{-1}$), high masses ($> 10^{10} M_\odot$), non-detections in 24 and 100 μm maps inconsistent with dust obscured SF, and visually identified in the H -band to be “early-type.” It is impossible to know the future star-formation histories (SFHs) of galaxies; however, CPGs have strong constraints on their SFHs, because their low sSFRs implies they must have quenched star-formation $> 1 \text{ Gyr}$ prior to the epoch of observation (Kriek et al. 2006, 2009b; Onodera et al. 2012; Kaviraj et al. 2013; Gobat et al. 2012; van de Sande et al. 2013; Whitaker et al. 2013). Therefore, we assumed a projected (future) SFH for all galaxies (exponentially declining with $\tau = 100 \text{ Myr}$ so that all galaxies would be passive according to the sSFR criteria of Cassata et al. 2011, 2013) with the observed initial SFR, and estimated how much stellar mass would be accumulated from the time of observation until the epoch of CPGs, which we took to be $\langle z \rangle = 1.6$. We additionally assumed no growth in size. Those LBGs that would meet the CPG selection of Cassata et al. (2011, 2013) are considered candidate progenitors (from now on referred to as candidates). The candidate selection is primarily based on SFR and size, and to a lesser extent, the stellar mass. In other words, candidates tend to be more compact and a milder tendency to higher SFR. The combination of these two characteristics means that candidates have higher surface density of SFR (Σ_{SFR} ; see Figure 1 for the properties of the subset of candidates and non-candidates with spectroscopy studied in this paper, and Figure 2 for their *HST* color composites). The average SFRs, stellar masses, and circularized half-light radii, for candidates (non-candidates) in the spectroscopic sample are 520 (170) $M_\odot \text{ yr}^{-1}$, 9.8 (9.6) $\log_{10} M_\odot$, and 0.9 (1.9) kpc.

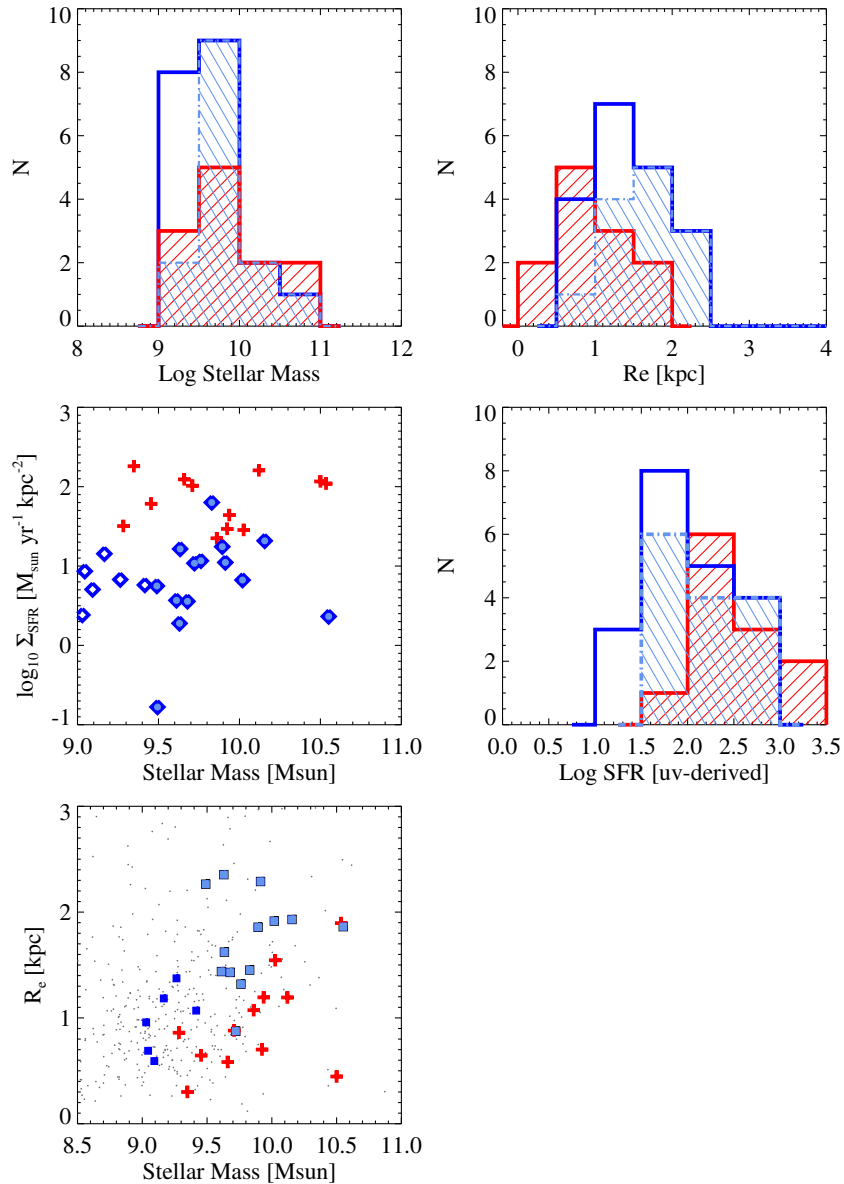


Figure 1. Photometric and morphological properties of both good quality spectroscopic samples of candidates (red) and non-candidates (dark blue). In light blue (dot-dashed lines) are plotted the distributions of non-candidates once low-mass galaxies are removed, as discussed in the text. The mean masses of red and light blue samples are the same. Histograms: the stellar mass distributions are very similar, while candidates exhibit higher SFRs and smaller half-light radii. As a result, the candidates have higher surface densities of star-formation (top right panel). Bottom right: candidates are more compact (i.e., smaller in size at a given stellar mass).

2.2. Spectroscopy

We use spectra in GOODS-South obtained at the European Southern Observatory’s VLT as part of the GOODS spectroscopy program with FORS2 (Vanzella et al. 2005, 2006, 2008), VIMOS (Popesso et al. 2009), and the Galaxy Mass Assembly Ultra-deep Spectroscopic Survey with FORS2 (Kurk et al. 2009, 2013). At $z \sim 3.4$, these optical spectra probe the rest-frame UV spectrum of the LBGs, a spectral region rich with diagnostics of the physical state of the ISM. The spectral resolution of these surveys varies between $R \sim 250\text{--}1000$, corresponding to velocity resolutions of $300\text{--}1200 \text{ km s}^{-1}$. The majority (60%) of the spectra we use in our analysis have $R \sim 660\text{--}1000$ (velocity resolution $300\text{--}450 \text{ km s}^{-1}$).

The scientific goal of the surveys above were to identify the redshifts of large samples (tens of thousands) of galaxies at $z > 1$, and while there are often multiple identifiable

emission or absorption lines, generally the spectra do not have adequate signal-to-noise ratios for detailed studies of the galaxy properties on an individual basis. In the following sections we therefore study the average properties using stacked spectra to maximize signal to noise. We visually inspected each individual spectrum, retaining only those of high quality for our final spectroscopic sample. This quality screening is qualitative, including visual identification of absorption and emission lines at the cataloged redshift, and also to some extent taking into account the quality flag published by each survey, whose redshifts may have been estimated using cross-correlations with galaxy templates rather than obvious lines. We additionally require “good” spectra to have identifiable features, which we use to estimate systemic redshifts (see next paragraph). Our final “good” quality spectroscopy sample includes 12 candidate progenitors and 20 non-candidates (27% and 15% of the original samples from Williams et al. (2014), respectively).

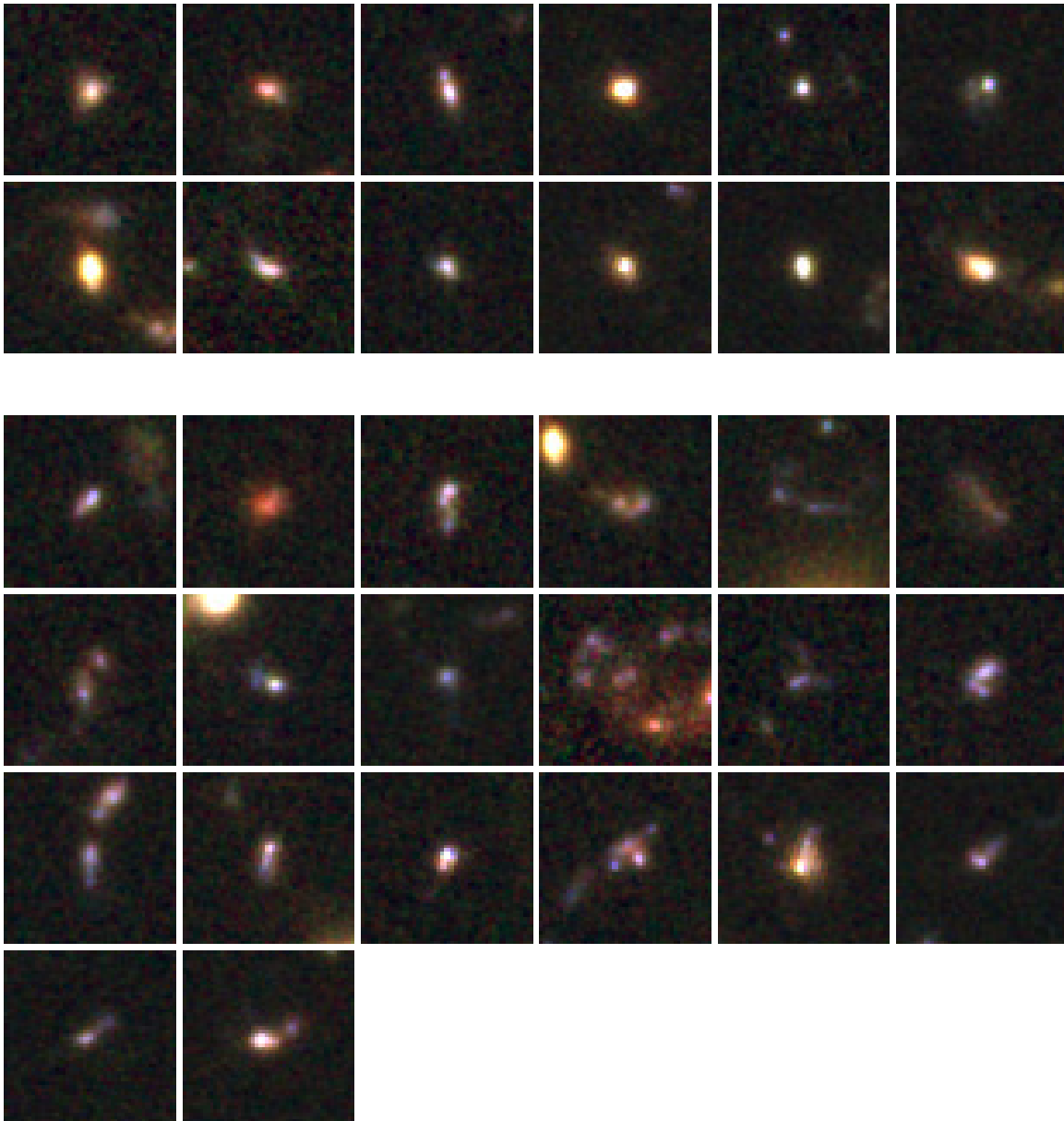


Figure 2. Color composites from the ACS and WFC3 filters, of candidates (top) and non-candidates (bottom). Images are 2 arcsec on a side.

The total exposure time in the stacks of each are ~ 103 and ~ 98 hr, respectively.

2.3. Systemic Redshifts

The cataloged redshifts that are published in the spectroscopic surveys were typically measured using spectral lines that are either resonant lines ($\text{Ly}\alpha$) or strong interstellar lines that may be heavily affected by outflows (for example Si II , Si IV and C IV). Therefore these redshifts are unlikely to be systemic (tracing the exact redshift of the galaxy) but rather reflect the redshift of the galaxy, modulated by additional velocities due to the kinematic properties of the ISM. Interstellar absorption lines are often observed blue shifted with respect to the rest transition wavelength due to large-scale outflows in the ISM of high-redshift galaxies. $\text{Ly}\alpha$ emission is often observed redshifted, since when redshifted out of resonance $\text{Ly}\alpha$ photons may travel freely, and therefore the $\text{Ly}\alpha$ may also reflect the properties of outflows (Shapley et al. 2003; Hansen & Oh 2006; Verhamme

et al. 2008; Schaerer & Verhamme 2008; Vanzella et al. 2009; Steidel et al. 2010; Kulas et al. 2012). Lines that trace the systemic redshift, for example photospheric lines that originate in the atmospheres of stars, are generally too faint to be detected in our spectra.

In this section, we document our procedure to estimate systemic redshifts using the UV spectroscopy. We also quantify our expected uncertainty in the systemic redshifts using a subset of galaxies for which systemic redshifts have been published based on rest-frame optical nebular emission lines, using NIR spectra. These NIR spectra and systemic redshifts come from Keck/MOSFIRE (Holden et al. 2014) and the Assessing the Mass-Abundance redshift[-Z] Evolution survey (Maiolino et al. 2008) with VLT/SINFONI. We use a comparison of 15 UV spectra of LBGs with published NIR-derived redshifts.

Previous studies have published methods to derive systemic redshifts from rest-frame UV spectroscopy, when no systemic lines are available (e.g., Adelberger et al. 2005; Steidel et al.

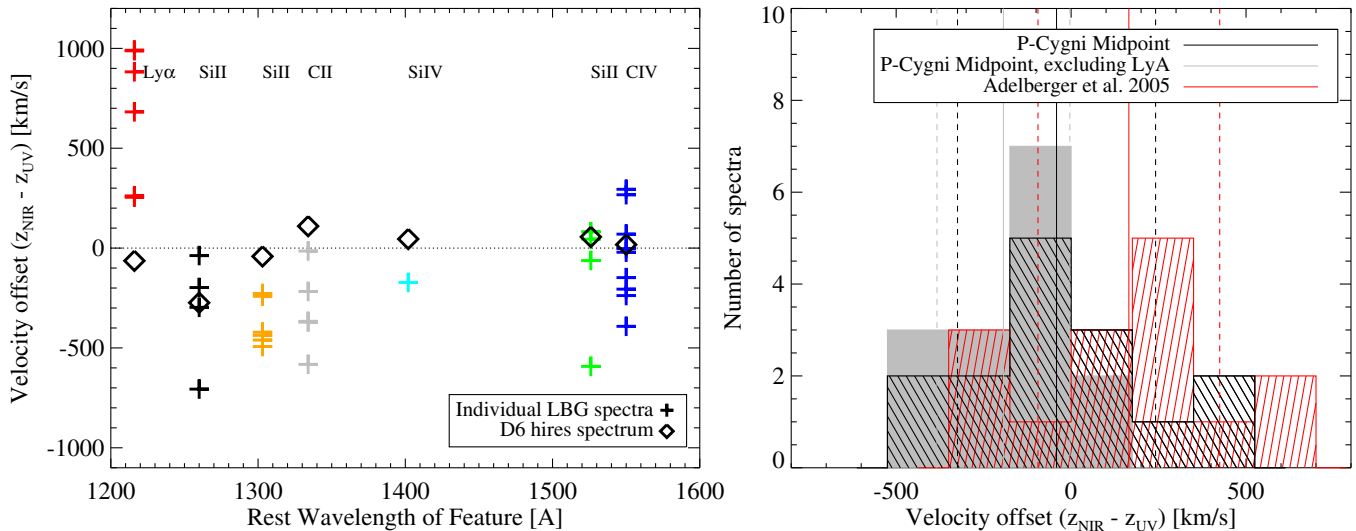


Figure 3. Left panel: velocity offset between the midpoint method of deriving the systemic redshift (as described in the text) and the actual systemic velocity from NIR spectroscopy, for individual galaxy spectra. Right panel: distribution of velocity offsets when individual midpoint-derived redshifts are averaged (black), which has a mean velocity offset of -42 (solid line) and a standard deviation of 283 km s^{-1} (dashed lines). In gray are the same measurements when Ly α is excluded from the measurement, whose distribution has a larger mean offset of -193 , and standard deviation of 190 km s^{-1} . In red is the same when measured using the method of Adelberger et al. (2005), which has a mean offset of 165 km s^{-1} with standard deviation of 260 km s^{-1} .

2010). In particular, Adelberger et al. (2005) have used a large sample of LBG at $z \sim 3$ with near-IR spectra to estimate systemic redshifts from the UV lines only, for the case where only Ly α is present, both ISM lines and Ly α are detected, and when only ISM lines are detected. This method is based primarily on the observed offsets in velocity between the various UV lines and NIR observed nebular emission lines. These velocity offsets are direct measurements of velocities in the ISM, and therefore these conversions from UV-line redshifts to estimated systemic redshifts will reflect the average outflowing ISM properties of their LBG samples. This means, by using their conversion, we artificially imprint the average kinematic properties of their LBG samples on our two galaxy samples, and as we are interested in studying outflow velocities, we approach this method with caution. We seek the best method to derive systemic redshifts from our samples, without any assumptions about the properties of the outflowing ISM.

Our individual spectra often exhibit emission lines immediately redward of broad interstellar absorption. These are most often seen in C IV $\lambda\lambda 1548, 1550$ and Ly α , which often exhibit P-Cygni profiles, but are also observed in other absorption lines (e.g., C II $\lambda 1334$, Si II $\lambda 1526$). Motivated by the need for an entirely empirical systemic redshift estimator that is independent of assumptions about the average properties of LBGs, we test how the redshift measured by the transition point between the absorption and emission components in various elemental species relates to the NIR-derived systemic redshift where available.

We measure these redshifts using a method based on the midpoint between the centroid wavelengths of emission and absorption components. We measure the wavelength of the midpoint between centroids for each observed feature, assuming this “midpoint” wavelength to be at rest with respect to the galaxy, and measure its redshift. Note that we are not suggesting a physical scenario to motivate the use of this mid-point method to estimate systemic redshifts and rather the method is entirely empirical. The left panel of Figure 3 shows the velocity offset between the predicted systemic redshift from the most common individual features (e.g., Ly α , Si II $\lambda 1260$, O I/Si II $\lambda 1303$,

C II $\lambda 1334$, Si II $\lambda 1526$, C IV $\lambda\lambda 1548, 1550$) compared with the systemic redshift of the galaxy measured from the NIR. We supplement these measurements with measurements from the Keck/HIRES spectrum of D6 (N. Reddy & C. Steidel 2014, private communication; Shapley et al. 2003; Steidel et al. 2010), whose systemic redshift has been derived from NIR spectroscopy (Pettini et al. 1998). We find that Ly α is the poorest estimator of systemic redshift among our LBG sample, not surprising since the resonant nature of the escape of Ly α photons from a galaxy may mean its transition point is not at rest, and also due to the complication of identifying the absorption component due to the Ly α forest. The measure from the Ly α in the HIRES spectrum of D6 may be better due to the more accurate identification of the P-Cygni absorption component. We also find that transitions of Si II may be poor estimators, possibly due to confusion between P-Cygni emission (if it exists) with fluorescent emission Si II* (if present), which exists at slightly longer wavelengths than would be expected of P-Cygni emission. C IV appears to be a good estimator. The midpoint derived redshift from C IV is relatively accurate, with the mean systemic redshift centered at zero and never deviating more than 500 km s^{-1} from the rest transition, and is the most frequently observed in our spectra of all features tested here.

In the right panel of Figure 3, we show how the combined information of all available transitions in individual spectra (i.e., the average redshift from each available midpoint) compares with the NIR-derived systemic redshift. The average redshift appears to agree remarkably well with the NIR-derived one. The mean of the distribution of velocity offsets between midpoint-derived redshifts and systemic redshifts is -42 km s^{-1} , with standard deviation of 283 km s^{-1} . No galaxy deviates larger than 490 km s^{-1} . Since Ly α is the most deviant in the left panel, we repeat the distribution of velocity offsets with the Ly α midpoint redshift removed from the average. We find that although removing Ly α tightens the distribution to 190 km s^{-1} , the offset from 0 increases to a mean offset of -193 km s^{-1} . We therefore conclude that we do not gain a closer estimate to systemic by excluding the Ly α , and it should be included where available. Examples of individual spectra that enter the stack

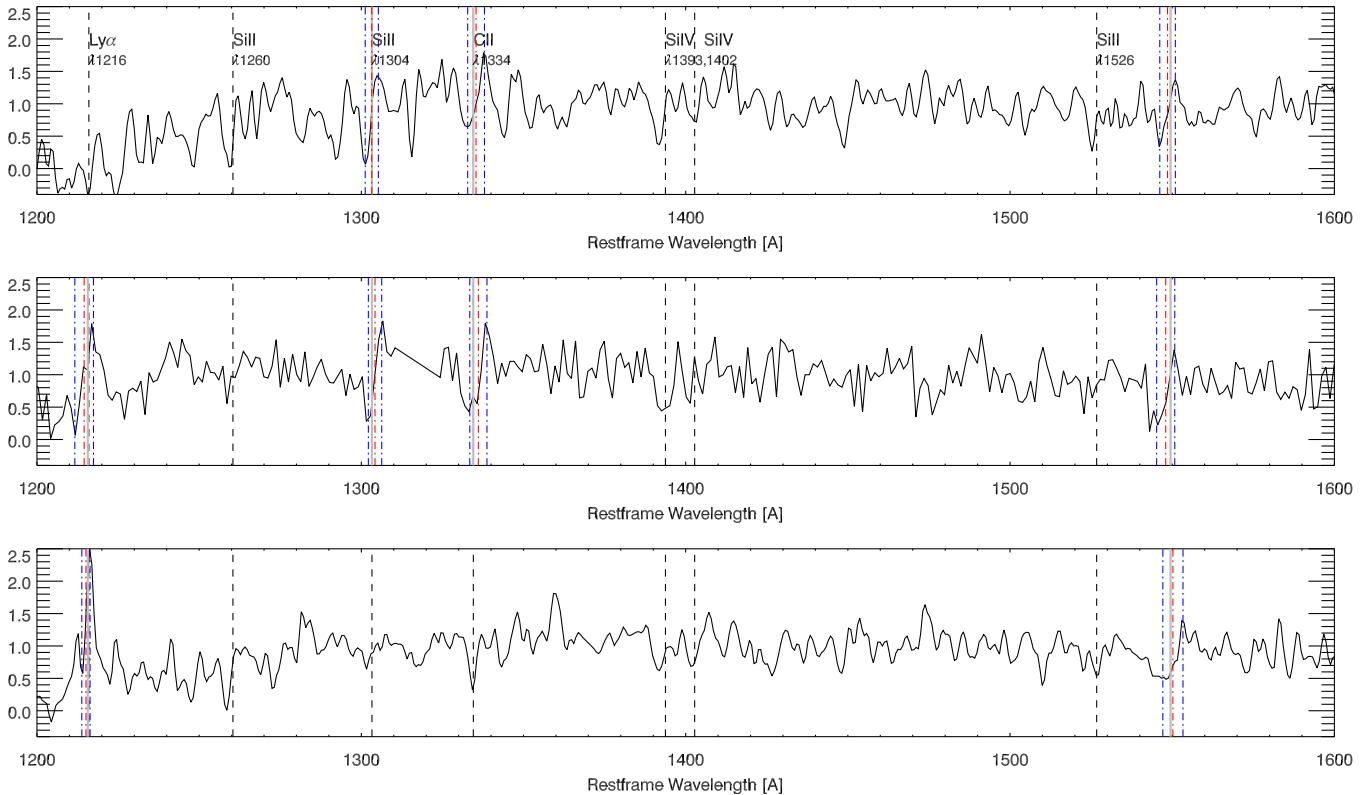


Figure 4. Individual VLT spectra that go into the stack. For each spectrum, the lines used in the calculation of the systemic redshift are identified, with blue showing the peak and trough and red showing the calculated midpoint. Gray vertical lines show the rest-wavelength of the line used for estimating the systemic redshift after de-redshifting the spectrum with the average of the red lines. The rest-frame wavelength of other interstellar lines that are not used to estimate redshift are shown with black dashed lines.

can be found in Figure 4, which illustrates the derivation of the systemic redshift derived from these midpoints.

In addition to testing the midpoint between emission and absorption, we also tested using the transition point between where the emission and absorption components meet the continuum level, and found that this continuum transition point did not trace systemic as accurately as the midpoint, and this may be due to the difficulty in accurately measuring the continuum level in noisy spectra.

For comparison, we have additionally computed systemic redshifts estimated using the Adelberger et al. (2005) method for comparison with the observed NIR redshifts. These are also plotted in red in the right panel of Figure 3, and find that the Adelberger et al. (2005) have a mean offset of 165 km s^{-1} , with a standard deviation of 260 km s^{-1} . This average offset is larger than that derived using the mid-point method with a similar distribution width, and results in multiple galaxies with offsets larger than 550 km s^{-1} .

Therefore, in the remainder of our analysis, we estimate systemic redshifts based on the midpoint method we have outlined here, which we have characterized to be a tracer of systemic with an expected uncertainty of $\sim 280 \text{ km s}^{-1}$. Since the main purpose of this paper is to study the *relative* properties of candidate progenitors, compared to ordinary LBGs, it is therefore very important to use a uniform way to estimate redshift from all galaxies studied here, *independent* of any assumptions on the properties of outflows in the ISM (e.g., Adelberger et al. 2005; Steidel et al. 2010). Although individual outflow velocities may not be accurate to more than this velocity uncertainty, we choose this option rather than mixing redshift estimators for different galaxies, which could smear

away differences between the samples. Importantly, however, we found that the results of this paper remain if we instead adopt either the Adelberger et al. (2005) method, or, if we combine the mid-point method with the NIR-derived redshift where available when producing the stacks. We found that all qualitative comparisons of the stacks are independent of the choice of the above methods used to convert spectra to the rest frame, and we would reach the same conclusions were we to adopt any of them.

2.4. Stacking Procedure

We stack our two samples of galaxies using the following procedure. We first individually de-redshift each spectrum using the estimate of systemic redshift from the mid-point of P-Cygni-like profiles discussed above. We then normalize each spectrum using the median value of the continuum measured between rest frame $1400 \text{ \AA} < \lambda < 1500 \text{ \AA}$. Finally, we stack using the *scombine* package in IRAF, where we rebinned to a common dispersion ($d\lambda = 0.6 \text{ \AA pixel}^{-1}$, rest frame), and performed a 3σ clipping during the stack (although we note that the clipping minimally affected the resulting stack, indicating that there are few significant outliers in terms of the features within our samples). Our final stacks are presented in the top panel of Figure 5. The bottom panel shows the spectral ratio (candidate stack divided by non-candidate stack). The ratio should be unity for identical features between the two samples, and therefore large deviations from this indicate features that differ. An indication of significance of the spectral differences can be seen in the pink region, which is defined by unity plus or minus the combined (in quadrature) sample standard deviations of candidates and non-candidates. These standard deviations are

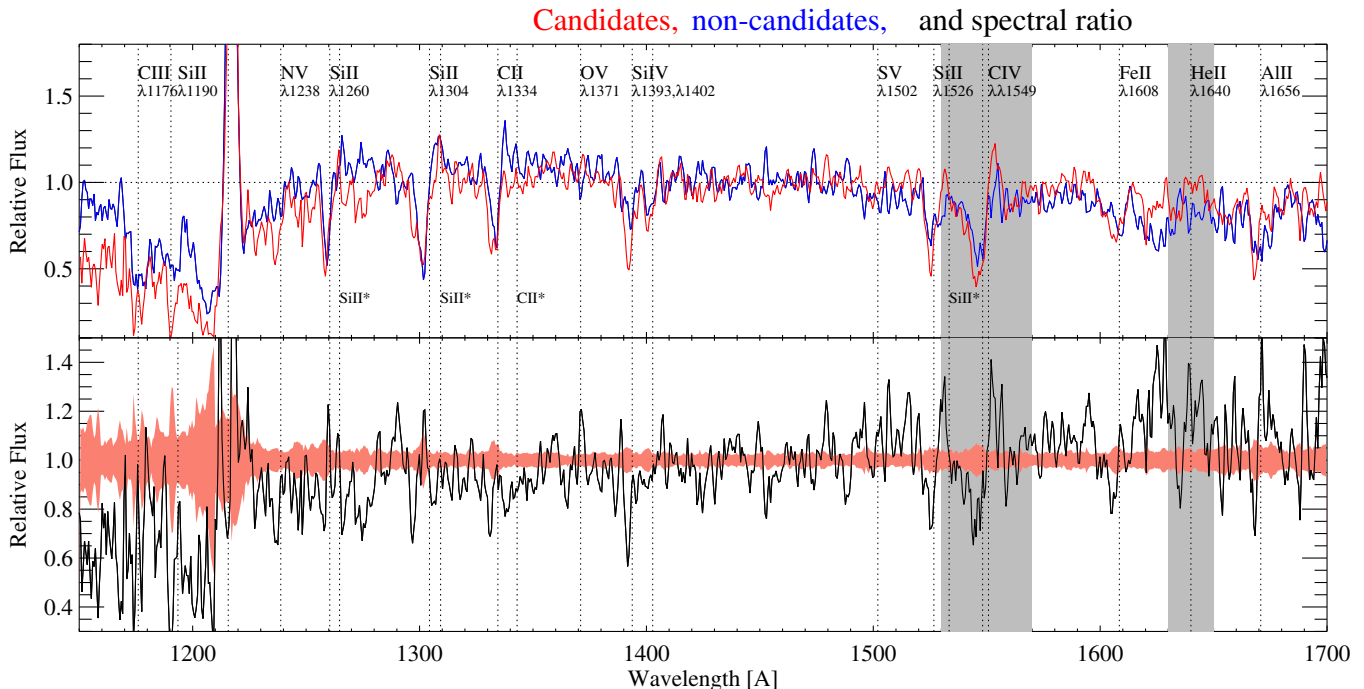


Figure 5. Top panel: stacks of good quality spectra for candidates (red), all non-candidates (dark blue). The rest-frame wavelengths of various observed interstellar lines are identified with the dashed lines. Bottom panel: spectral ratio of the two stacks (i.e., candidate stack divided by non-candidate stack). Various features that differ between the two samples are highlighted by the ratio, which would be unity for identical features. Pink region indicates unity plus or minus the sample standard deviations of the two samples added in quadrature. Shaded regions indicate two features that depend on metallicity in rest-frame UV spectra that will be discussed in Section 4.3.

estimated as follows. We repeat the stacks of each sample using jackknife resampling, each time removing one spectrum and stacking the rest. The final sample error on each spectral point is then the standard deviation of the jackknifed stacks. We then combine in quadrature the standard deviations of candidates and non-candidates around unity to make the pink region. We note that the combined region redward of 1250 Å is remarkably uniform, indicating the variation in those spectral features from galaxy to galaxy is relatively small. In contrast, the pink region near Ly α is much larger, indicating a diversity of Ly α properties among our samples. The differences in stacked Ly α between the candidates and non-candidates, along with error bars indicating the standard deviation of each stack, can be seen in Figure 6.

3. RESULTS

3.1. Sample Properties

In the composite spectrum shown in Figure 5 there are many features that are generically visible among LBGs at $z \sim 3\text{--}4$ (e.g., Shapley et al. 2003; Jones et al. 2012). There are a variety of high- and low-ionization lines visible in absorption. First, by comparing the rest-wavelength of these lines (dotted lines) it is obvious that both candidates and non-candidates exhibit outflows, as indicated by the blue shifts in absorption troughs relative to the rest wavelength. In particular, SiII, CII, SiIV, CIV, and FeII are visible in both spectra. We also see HeII in emission, detected in the candidates. The UV spectral slope is redder for candidates than non-candidates, similar to the redder UV observed photometrically in Williams et al. (2014). Both of the samples show strong Ly α in emission (although it extends beyond the range shown in Figure 5 to emphasize the weaker features in other parts of the UV spectrum, we show Ly α individually in Figure 6). The candidates exhibit stronger absorption in Ly α , and their Ly α emission is also

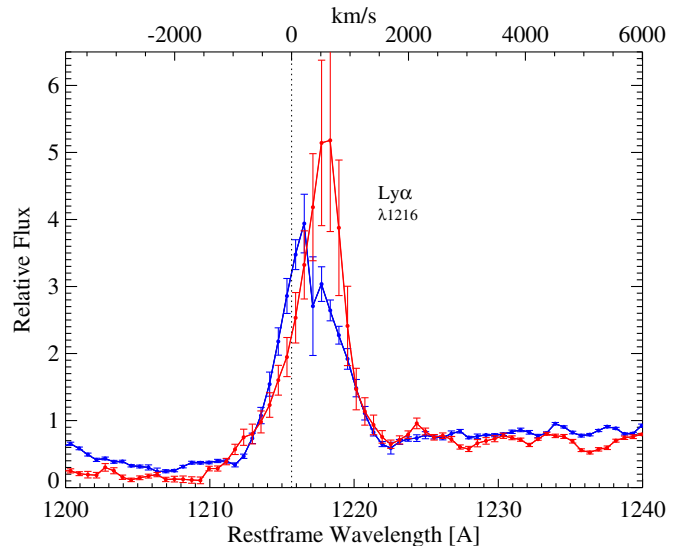


Figure 6. Zoom in of the stacks (candidates in red and non-candidates in blue) presented in Figure 5 around Ly α .

more redshifted. As these are stacks and therefore represents the average properties of galaxies selected according to our criteria, we do not focus on specific quantities from each stack. Rather, in the following sections, we will focus on comparing the spectral properties in a *relative* way.

Because of this relative comparison, it is necessary to test if mass differences between the two samples could produce the relative differences we observe. For example, it is possible that the kinematic properties of the absorbing gas may be a function of luminosity or mass. Additionally, if the mass–metallicity relation persists to $z > 3$ (e.g., Maiolino et al.

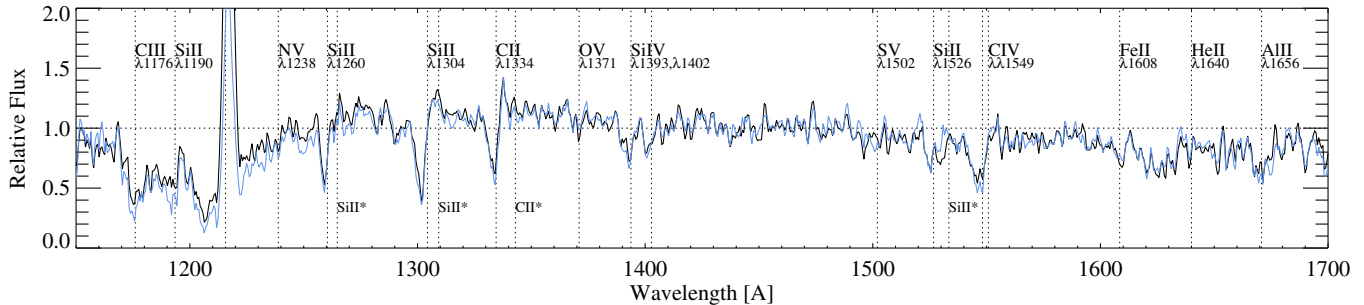


Figure 7. Stack of all non-candidates as shown in Figure 5 (black), and the stack of the high-mass sample of non-candidates (blue). Interstellar absorption line properties of the high-mass stack are very similar to that of the full sample. The major differences are a decrease in Ly α emission and redder far-UV slope in the high-mass sample.

2008), samples that are offset from each other in mass may be more likely to show offsets in metallicity. Both Steidel et al. (2010) and Lee et al. (2013b) have found that velocity offsets between interstellar absorption lines and the systemic redshifts of galaxies are dependent on the baryonic mass of the galaxy. In the top left panel of Figure 1, the non-candidate sample has a larger low-mass tail than the candidates, although their overall mass range and high-mass distribution are very similar. To explore the dependence of any of our main conclusions on this low-mass tail, we repeat the non-candidate stack with a subsample of non-candidates that are more similar to candidates in mass, such that the average mass of the distributions match. We remove all non-candidates whose $\log_{10} M^* < 9.6$, resulting in a sample of non-candidates with the same average stellar mass as the candidate sample, $\langle M_{\text{star}}/M_{\odot} \rangle \sim 9.8$. This high-mass sample includes 14 of the 20 non-candidates. Due to the smaller number of non-candidates that meet this criteria in mass, the noise in the stack is larger. The second (lighter) blue distributions in each panel of Figure 1 shows the sample differences when excluding these lowest mass galaxies. The stack of the high-mass sample compared with the full sample of non-candidates is presented in Figure 7. We find a slight increase in the equivalent width of some of the interstellar absorption lines (e.g., Si IV $\lambda 1393$), and a decrease in Ly α emission strength, but otherwise, the high-mass stack is qualitatively very similar to that of the stack of the full sample of non-candidates. We stress that the main results of this study, reported in the next sections, remain unchanged if we used measurements made with the high-mass stack of the non-candidate galaxies. Therefore, our results are independent of any offsets in their mass distributions, and rather reflect intrinsic differences between the candidates and non-candidates.

3.2. Kinematic Properties

In this section, we focus on the relative kinematic properties of the ISM in the two samples of galaxies, which can be derived from the following observed interstellar absorption lines: Si II $\lambda 1260$, the O I/Si II $\lambda 1303$ blend, C II $\lambda 1334$, Si IV $\lambda 1393$ and $\lambda 1402$, Si II $\lambda 1526$, and Fe II $\lambda 1608$. As can be seen in Figure 5, the candidates exhibit stronger absorption in the majority of these lines. Visual inspection of several lines shows the candidates have larger velocity offsets. Both of these are also true of the C IV $\lambda\lambda 1548, 1550$ doublet, however, due to the asymmetric nature of the P-Cygni profile, which is a combination of stellar absorption and emission, in combination with further absorption by outflowing material in the ISM, we defer analysis of this line to the next section.

Table 1
Line Centroid Measurements

Line	Rest Wavelength	Candidate Blueshift (km s $^{-1}$)	Non-candidate Blueshift (km s $^{-1}$)
Si II	1260.42	465 \pm 45	304 \pm 34
Si II O I	1303.27	675 \pm 66	471 \pm 33
C II	1334.50	454 \pm 33	316 \pm 39
Si IV	1393.76	313 \pm 29	259 \pm 70
Si IV	1402.77	389 \pm 75	312 \pm 71
Si II	1526.71	256 \pm 29	4 \pm 85
Fe II	1608.45	404 \pm 45	-60 \pm 38

We fit Gaussian profiles to the seven interstellar lines mentioned above, where the line center, width, continuum level and peak flux density are left as free parameters. The observed and fitted absorption profiles are shown in Figure 8, and the centroids of these fits are listed in Table 1. (For comparison, the same fits using the high-mass only non-candidate stack is shown in Figure 9). We also calculate equivalent widths of each line by directly integrating the line flux in the observed stack. For each ISM line, we fit a line to two continuum regions bracketing the ISM line that are devoid of other features, interpolate this continuum fit at the ISM line center, and then integrate the equivalent width with respect to the continuum. We estimate the error on the equivalent width using the standard deviation of 1000 Monte Carlo simulations generated from simulated stacks produced from Gaussian variates of each point according to the rms values in the continuum regions around each line, as measured by IRAF.

We compare the line centroid relative to the rest wavelength of the line, and the line equivalent width in Figure 10. This figure shows the equivalent width versus blueshift of each individual line fit in Figure 8 for both candidates and non-candidates. In the figure we show low- and high-ionization lines color coded separately, although we do not see that there is any trend with ionization state. It is apparent, however, that there is a tendency for the absorption lines from the candidate stack to exhibit a stronger blueshift with respect to the rest wavelength than the non-candidates.

We also plot in Figure 11 the same measurements with a different representation. The left panel shows the centroid blueshift of each individual line compared directly between the candidate and non-candidate stack. In other words, the blue shift of any given line (i.e., Si II $\lambda 1260$) in the candidate stack is compared directly with the blueshift of that same line in the non-candidate stack. Similarly we compare directly the absolute values of equivalent width in absorption of any given line in the right panel of Figure 11. The one-to-one line would

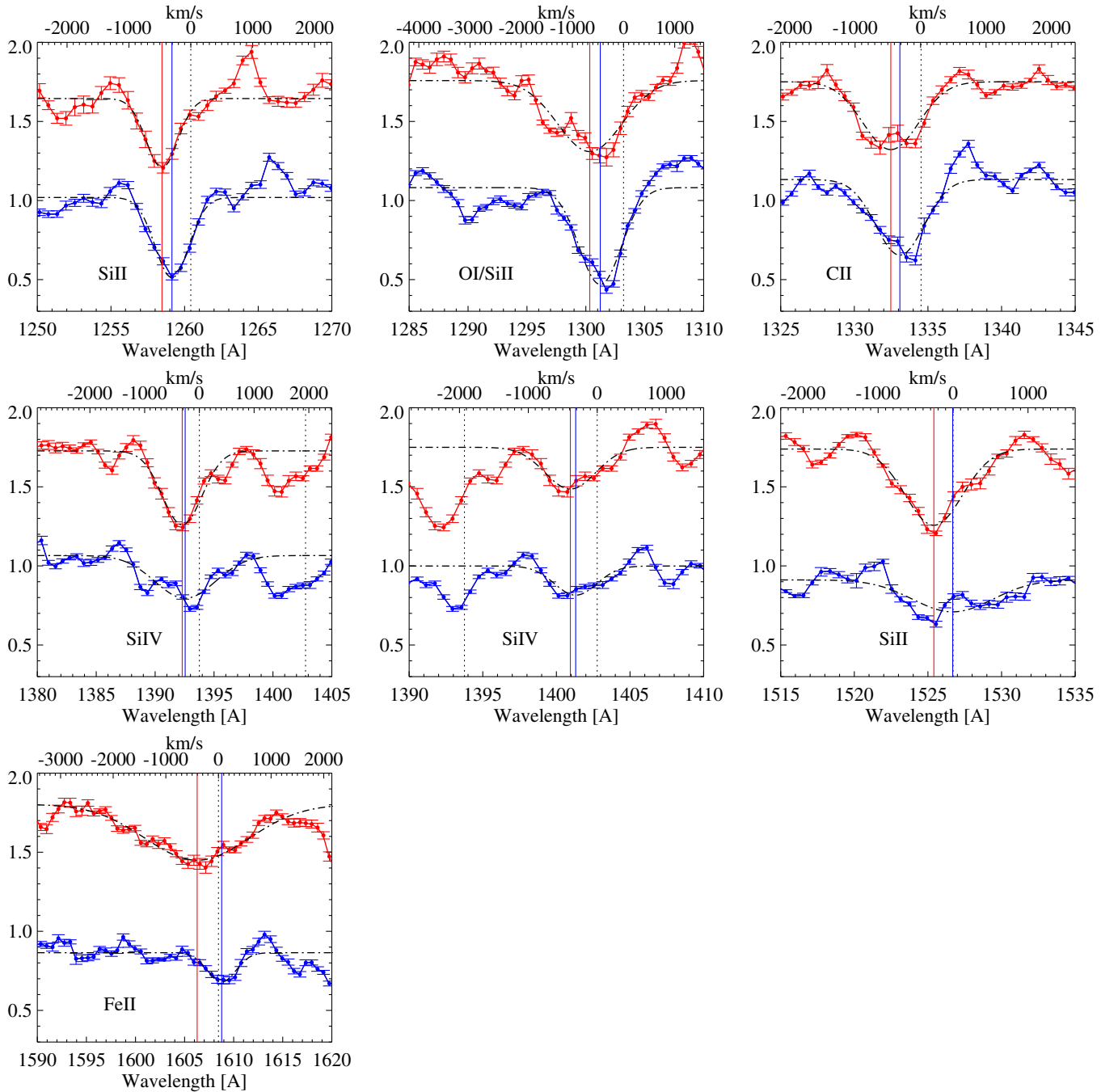


Figure 8. Zoom-ins of various interstellar lines visible in candidate (red) and non-candidate (blue) spectra in Figure 5 (candidate spectra are arbitrarily offset by 0.8 for clarity). Gaussian fits to each line are shown as black dot-dashed lines. Fitted line centroids are shown as vertical lines of appropriate color.

indicate the exact same centroid blueshift, or equivalent width, was measured in candidates and non-candidates for any given absorption line. This figure shows more clearly that in nearly all measurements of blueshift and equivalent width, the candidates show a larger measurement than the non-candidates, indicating that on a line by line basis, as well as globally, candidates exhibit larger centroid blueshifts and stronger equivalent widths than non-candidates.

This is indicative that the kinematics in the ISM of these two samples of galaxies may be distinct from each other. First, this offset in blueshift could in principle be an indication that the velocity spread of the outflowing component is higher on average among the candidate spectroscopic sample than that of the non-candidates, with more high-velocity gas contributing

to the growth of the absorption lines in the former than in the latter. Another way to state this is that the smaller blueshift of the centroid of the non-candidates could be the result of a larger component of zero-velocity gas component, i.e., their ISM is on average less energized than that of the candidate galaxies. The right panel of Figure 11 compares the equivalent width of each absorption line from the candidate stack with that same line in the non-candidate stack. These lines are saturated (e.g., Pettini et al. 2002; Shapley et al. 2003), and therefore any increase in equivalent width is only weakly related to column density of that gas in the ISM. Rather, the measured equivalent width is instead a reflection of the combined effect of the spread in velocities of the absorbing gas clouds in the ISM, and the covering fraction of gas. With this low-resolution data, it is

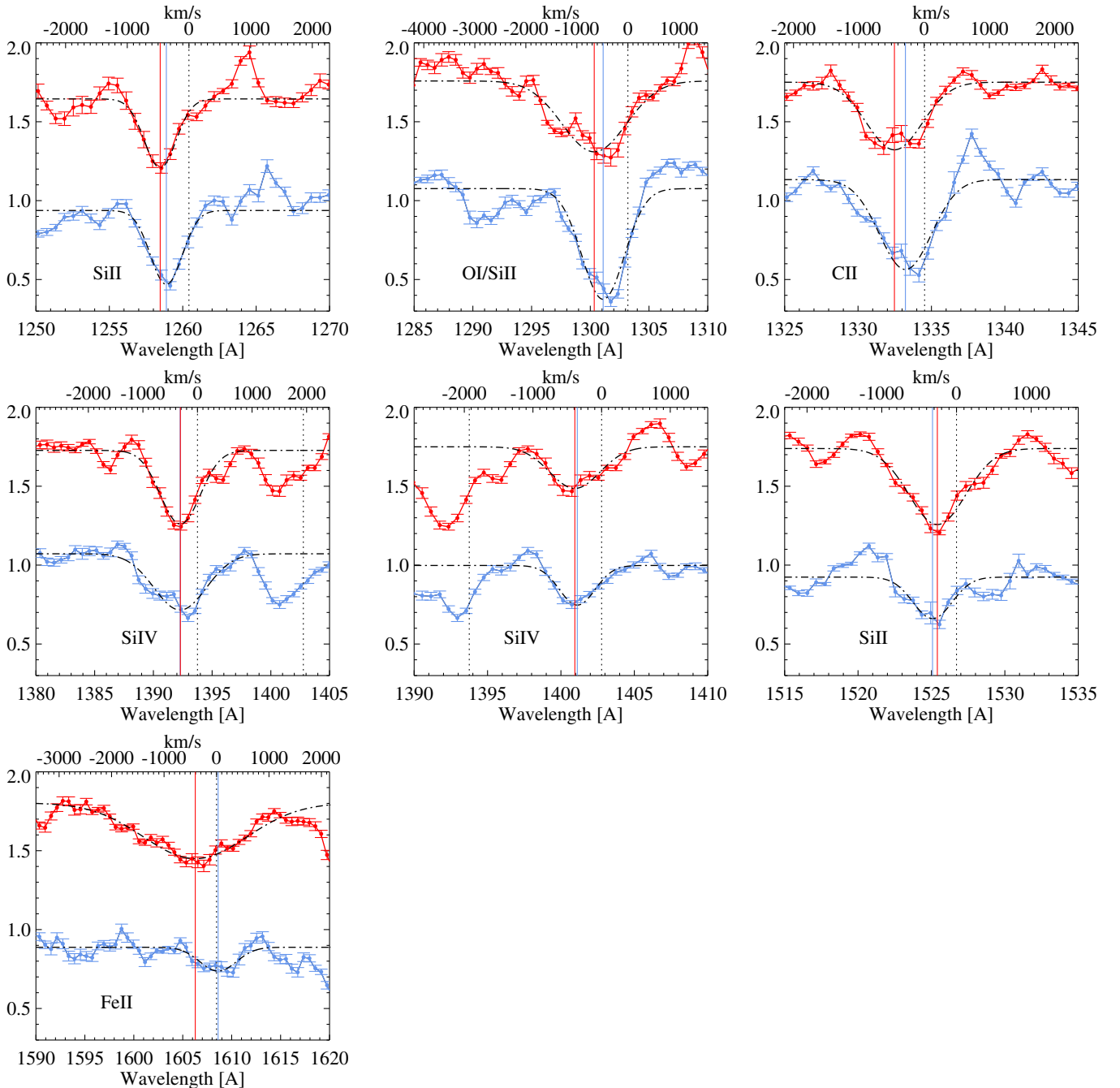


Figure 9. Same as Figure 8, except the blue spectra are from the high-mass non-candidate stack. The centroid velocities in candidates are larger than both the full non-candidate sample in Figure 8 and high-mass non-candidate samples.

not possible to distinguish these two contributions. The data presented in Figure 11 are consistent with a scenario where the outflowing gas of the candidates includes faster components and also a larger spread of velocities of its gas clouds in the ISM, compared with non-candidates. They also are consistent, however, with a lower covering fraction of the ISM in the non-candidates relative to the candidates, which is a distinct possibility since the morphology of the stellar component of the former is much more extended than that of the latter. It is not possible to clearly disentangle these two contributions with our data. As we discuss later in Section 3.3, however, the fact that the candidates have much stronger Ly α emission, given the strength of their interstellar absorption, compared to the non-candidates suggests that the gas covering fraction is unlikely

playing a key role here, since a larger covering fraction would generally tend to depress the strength of Ly α emission, not enhance it.

Since the candidates on average have higher SFRs than non-candidates, we investigate how these velocities relate to each other in terms of the differences in SFR. Relations between outflow velocity and SFR have been observed over many orders of magnitude in galaxy SFR, and Martin (2005) identified a relation between outflow velocity and SFR, such that $V \propto \text{SFR}^{0.35}$.

This relation is based on the upper envelope of the distribution of velocity versus SFR for galaxies at $z \sim 0$ over four orders of magnitude in SFR (the full distribution studied there exhibits a lot of scatter on an individual galaxy basis).

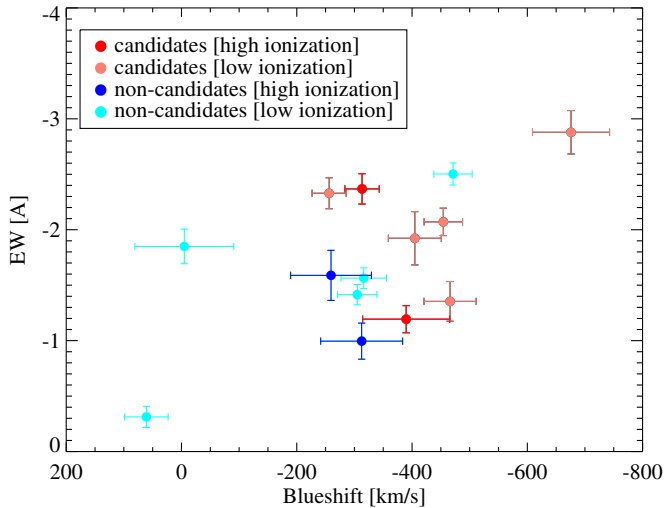


Figure 10. Equivalent width vs. the blueshift of that line’s centroid for all the absorption lines plotted in Figure 8. Lines from the candidate spectra are plotted in salmon (low-ionization lines) and red (high-ionization lines), and for non-candidates, cyan (low-ionization) and blue (high ionization). Candidates tend to show higher velocity blue shifts than the non-candidates, indicative that the velocity spread of the outflowing component is higher on average, and larger equivalent widths, indicating higher covering fraction and/or larger dispersion of velocities of absorbing interstellar clouds.

Other studies have found similar relationships between SFR and outflow velocity for a variety of galaxy populations (Weiner et al. 2009; Banerji et al. 2011; Song et al. 2014; although still other studies have found that a more significant relationship exists between outflow velocity and surface density of star-formation, see a more complete discussion in Section 4.2). Here, we use the observed relation from Martin (2005) to see if our observed average velocity differences and SFRs are consistent with this relation. The relation is given by $\log V = (0.35 \pm 0.06)\log(\text{SFR}) + (1.56 \pm 0.13)$, where V is outflow velocity in km s^{-1} and SFR is in $M_{\odot}\text{yr}^{-1}$. We plot this relation in Figure 10 (dashed line), where we use the relation to predict the ratio of the average outflow velocities, given the average SFRs of

the two samples. The gray region outlines the region within the uncertainties of the fit parameters for this relation (Martin 2005). We see that the average low-ionization line blueshift of the two stacks follow this empirical scaling relation between SFR and outflow velocity for galaxies at lower redshifts. The weighted averages and standard deviations of the low-ionization lines, which generally trace the same gas and therefore may have similar kinematics, are also presented. Candidate low-ionization lines exhibit on average centroid velocities and standard deviations of $-426 \pm 134 \text{ km s}^{-1}$, and that of non-candidates is $-262 \pm 202 \text{ km s}^{-1}$. Martin (2005) notes that although the upper envelope of the velocity-SFR distribution for the lower redshift sample of galaxies studied there follow this relation, at $\text{SFR} > 10$ the scatter in velocity at a given SFR is huge, and the slope may in fact be shallower. If such a scaling relation exists, and is flatter than that suggested by Martin (2005) and Weiner et al. (2009), the difference in centroid velocities between our two samples may be more significant than that expected purely from SFR differences using the scaling relation of the upper envelope. Regardless, we find that these velocities are consistent with what is expected given the differences in their SFRs.

These blueshift measurements obviously rely on a robust measurement of systemic redshift in each galaxy, and as discussed previously, the systemic redshift we measure is subject to some uncertainty. With these data this is unavoidable. However, it is possible to get a first-order check on our conclusion of the difference in *relative centroid* velocities between the two samples by comparing the net offsets in velocity between the absorption lines and the $\text{Ly}\alpha$. Because $\text{Ly}\alpha$ is a resonant line, it is generally seen redshifted with respect to systemic in high-redshift galaxies, because $\text{Ly}\alpha$ photons that scatter off outflows for example allows the line to redshift out of resonance (Shapley et al. 2003; Steidel et al. 2011). Indeed, LBGs generically show a difference in velocity between $\text{Ly}\alpha$ and interstellar absorption lines that is smaller than the difference between rest wavelengths, suggesting $\text{Ly}\alpha$ scatters off outflows in the background of galaxies (i.e., moving away) and interstellar lines absorbed by outflowing gas in the foreground (i.e., moving toward us).

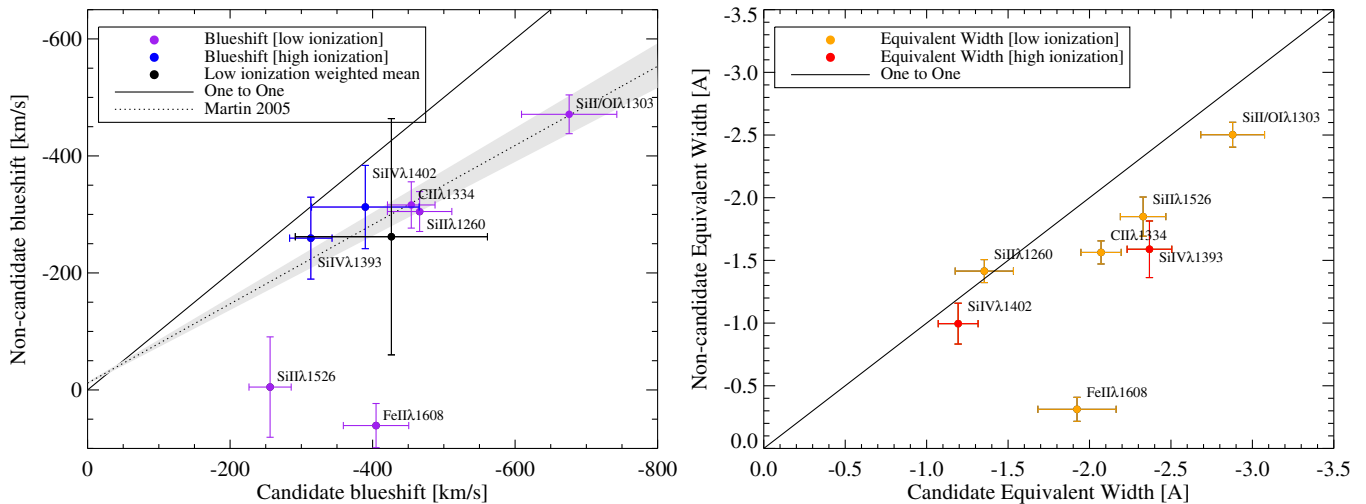


Figure 11. Same data as in Figure 10 but this time each line property measured from the non-candidate spectrum is plotted against the corresponding line property measured from the candidate spectrum. Each point represents a different absorption line. Those line properties are: blueshift of low-ionization lines (purple) and blueshift of high-ionization lines (blue) in the left panel, and equivalent widths of low-ionization lines (orange) and equivalent widths of high-ionization lines (red) in the right panel. A point on the one to one line (black) would indicate that the measured property is the same between the two samples. The shaded region in the left panel represents the fit from Martin (2005) for outflow velocity as a function of SFR. Measurements are larger in the candidate spectrum relative to non-candidates (i.e., lines are more blue shifted, or higher equivalent width).

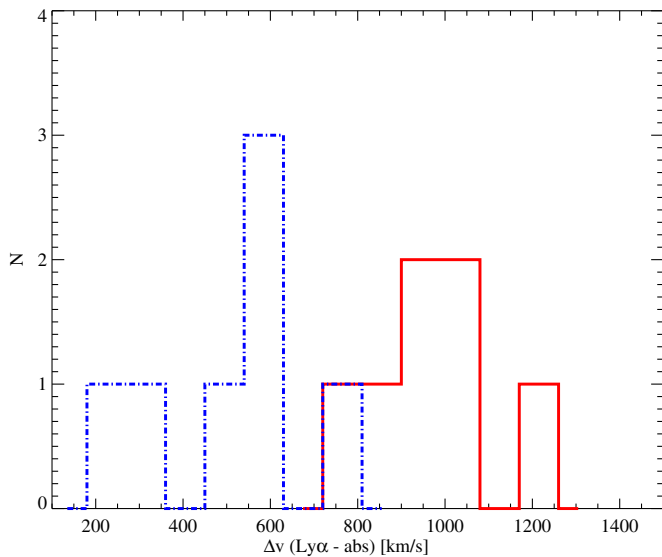


Figure 12. Histograms showing the velocity offset between Ly α and each absorption line presented in Figure 10. Candidates (red) show larger velocity offsets than non-candidates (blue).

As can be seen in Figure 6, both samples exhibit Ly α profiles that are redshifted, as would be expected if it traces outflowing gas and must be redshifted out of resonance in order to travel freely, or, if it is absorbed by neutral gas close to rest with respect to the galaxy. It is clear that the candidate Ly α profile exhibits a larger redshift, whereas the non-candidate Ly α profile is closer to the rest wavelength. In Figure 12, we plot a histogram of the velocity difference between the peak wavelength of the Ly α profile, and the Gaussian centroid of the interstellar absorption lines. This figure shows that the net offsets in velocity differ significantly between the two samples, with the candidates showing larger relative velocities between interstellar absorption and Ly α emission, independent of systemic velocities.

3.3. Ly α Properties

As is clear from the large jackknifed error bars on the stacks in Figure 6, which reflect the variation among the individual spectra, the LBGs making up both our samples exhibit a variety of Ly α properties. In the candidate stack, three galaxies lack Ly α coverage, and of the remaining, about half exhibit Ly α in emission (one weak detection, two with detected Ly α in excess of the average and two with detected Ly α below the average). Of the non-candidates, 1 galaxy lacks Ly α coverage, and 9 show well detected Ly α emission, 4 have weak detections, and 6 are not detected. To summarize, roughly half of each sample with Ly α spectral coverage has Ly α in emission and the other half in absorption. This is in good agreement with the global statistics observed among LBG at $z \sim 3$ in general, in which roughly half have Ly α detected in emission (e.g., Shapley et al. 2003). Thus, although the two samples of spectra that enter in both stacks are relatively small, we do not believe that small-number statistics are significantly affecting the average properties of each LBG sample as represented by the two stacks. We further note that removing the 4 galaxies without Ly α coverage from the stacks does not change our results.

Since the SFR and overall UV spectra of the two samples are similar, the differences between their Ly α lines very likely reflect differences in the coverage and conditions of neutral hydrogen in the ISM. As discussed previously, we observe the

candidate Ly α profile to be more redshifted than that of the non-candidates. However, the presence of Ly α emission blue shifted with respect to the rest wavelength may indicate the escape of Ly α photons through patchy or ionized foreground ISM (e.g., Heckman et al. 2011) or be an indication of infall (e.g., Kulas et al. 2012). In this section, we describe our measurement of the equivalent width of the Ly α line, and present analysis based on this measurement.

In addition to being characterized by redshifted emission, the Ly α line in our samples, like many galaxies at similar high-redshift, is characterized by asymmetric profiles, including some blue shifted emission, as well as blue shifted absorption. Measurement of the intrinsic equivalent width of Ly α at high-redshift is complicated by additional intervening absorption due to neutral hydrogen in the circum-galactic medium of the galaxy and by the Ly α forest. This extrinsic absorption, i.e., not intrinsic to the galaxy itself, makes defining the blue ward edge and shape of the Ly α profile highly uncertain. To ensure an equal comparison with previous measures in the literature, we adopt a similar procedure to that by Shapley et al. (2003); Stark et al. (2010); Jones et al. (2012) when we measure the equivalent width of the Ly α . Using the stacked spectrum of $z \sim 3$ of Shapley et al. (2003), we have reproduced their measurement of Ly α equivalent width of 14.3 Å using a continuum level defined by the mean value between rest wavelengths 1225–1235 Å, and where the bounds for the line are defined as follows. The red ward edge of the Ly α profiles is defined by where the flux in the line meets the continuum level, and the blue ward edge is defined to be as far from the rest wavelength of Ly α as the point where the red side of the profile hits the continuum, i.e., we use for the blue side of the line the same half-width at zero level observed for the red side. We found that this procedure reproduced the documented equivalent width in Shapley et al. (2003) for their LBG stack within our error on the equivalent width. We estimate our error on the equivalent width as described in Section 3.2, except we use the jackknifed error on the stack to produce Gaussian variates on the stack, since this error is much larger than the continuum rms in the vicinity of Ly α . Following this procedure, we find that the candidate stack is characterized by much stronger Ly α equivalent width (20.8 ± 2.1 Å) than the non-candidate stack (13.3 ± 0.8 Å). Furthermore, we note that non-candidates exhibit a larger equivalent width of blue shifted Ly α than the candidates, and makes up a higher fraction of the total equivalent width in Ly α (about 15%, compared to 7% in the candidate stack).

We compare our measurement of Ly α equivalent widths to the general trend of equivalent widths in Ly α and low-ionization interstellar absorption lines found among $z > 3$ LBGs in Figure 13, which is adapted from Jones et al. (2012). The figure shows that, in general, the Ly α equivalent width correlates with the equivalent width of low-ionization interstellar absorption lines. The sense of the correlation is that the larger the equivalent width of low-ionization interstellar absorption lines the smaller the emission equivalent width of Ly α , or the larger the absorption equivalent width of Ly α (Shapley et al. 2003; Vanzella et al. 2009; Jones et al. 2012; Berry et al. 2012). This is generally interpreted to indicate that Ly α is present in galaxies with patchy neutral covering fraction of gas in the ISM, or clumpy ISM (e.g., Shapley et al. 2003; Quider et al. 2009; Jones et al. 2012, 2013), since for Ly α to escape the galaxy it must travel freely without neutral hydrogen in the foreground. Alternatively, Ly α can escape if it is redshifted out of resonance (e.g., Verhamme et al. 2008; Steidel et al. 2010).

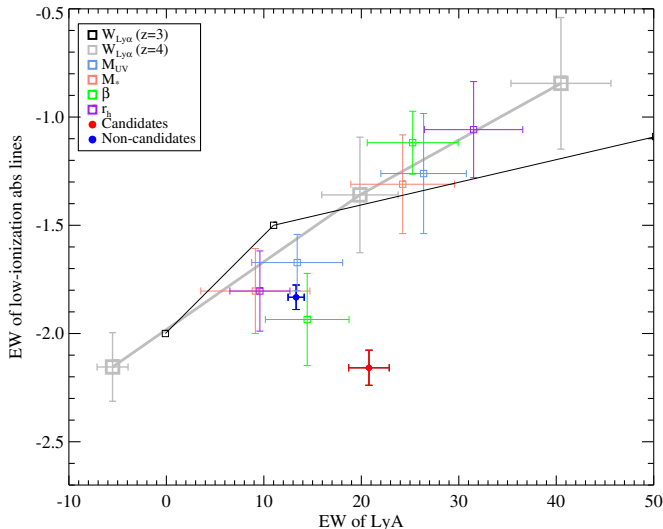


Figure 13. Comparison of Ly α equivalent width with that of the average equivalent width of low-ionization absorption lines in the ISM. Low-ionization ISM lines used to define the average equivalent width are Si II λ 1260, O I/Si II λ 1303, C IV λ 1334, and Si II λ 1526. The data are from Shapley et al. (2003, black squares), and Jones et al. (2012, gray and colored squares), where these points are binned by properties in the legend (see the text for full a description). While non-candidates display properties consistent with the trend of normal LBGs, candidates lie significantly off the trend, simultaneously displaying strong Ly α and strong interstellar absorption. Figure adapted from Jones et al. (2012).

Figure 13 also shows the general relation between the equivalent widths of the low-ionization ISM lines and Ly α for $z \sim 4$ LBGs that have been split into bins according to each of the following properties; equivalent width of Ly α ($W_{Ly\alpha}$), UV luminosity (M_{UV}), stellar mass (M^*), UV slope (β), and SExtractor half-light radius (r_h). The cluster of colored points at low Ly α equivalent width are half of the $z \sim 4$ galaxies, which are each the brightest and more massive, and have redder UV slopes and larger radii. Jones et al. (2012) note that all trends in Figure 13 with galaxy properties listed above are due to their correlations with either the neutral gas covering fraction, or the kinematics in the ISM.

The non-candidate stack has interstellar absorption and Ly α emission consistent with the general trend of $z \sim 3$ LBGs. However, the candidate stack does not, and instead has stronger Ly α emission than expected given the large (negative equivalent width) absorption.

Differences in morphology appear to correlate with this trend, as can be seen by the purple points in this figure. When split by half-light radius, larger galaxies make up the low equivalent width of Ly α part of the trend, while small galaxies have stronger Ly α . Vanzella et al. (2009); Law et al. (2012) find a relationship between Ly α and half-light radius, such that smaller galaxies are more likely to have Ly α in emission (see also Malhotra et al. 2012), although Pentericci et al. (2010) find no dependence of Ly α properties and UV morphology. Our two samples are not explicitly split in size, they are roughly split in the mass-size diagram (see Figure 1) and therefore comparison in the context of the trend with galaxy size may be complicated by the overlap in their size distributions. However, if we compare the candidates to galaxies in the small size bin, the discrepancy between the candidates and the LBG trend of Ly α and low-ionization lines becomes even larger. Given their smaller size on average, it might be expected that candidates should exhibit weaker interstellar absorption than

Table 2
Equivalent Width Measures

Galaxy Sample	Line	Equivalent Width (Å)
Candidates	C IV (abs)	-5.2 ± 0.3
	C IV (em)	0.9 ± 0.1
	He II	1.9 ± 0.2
Non-candidates	Ly α	20.8 ± 2.1
	C IV (abs)	-3.0 ± 0.2
	C IV (em)	0.3 ± 0.1
	He II	Undetected (rms = 0.09)
	Ly α	13.3 ± 0.8

non-candidates. The candidates, however, are not just smaller, they are denser and have a generally larger stellar mass and SFR such that, if they quench soon after $z \sim 3$, they are passively evolving by $z \sim 2$ and have stellar mass $M > 10^{10} M_{\odot}$. We will discuss plausible interpretations of this strong deviation among candidates in Section 4.

3.4. X-Ray Properties

In this section, we investigate any evidence in the data that either sample is affected by AGN activity. In Williams et al. (2014), the X-ray and infrared properties of the parent samples of candidate and non-candidate LBGs were studied. Only three non-candidates were detected in the *Chandra* 4 Ms data, and X-ray stacking indicated no statistical difference between the two samples. Additionally stacks in the *Spitzer* 24 μ m and *Herschel* 100 μ m images indicated no significant average IR emission among candidates, and a minor (4σ) 24 μ m detection among non-candidates, i.e., possible evidence of marginally larger dust obscuration. For the spectroscopic subsamples studied here, no galaxies are X-ray detected, three galaxies are detected in the 24 μ m images (two candidates, one non-candidate) and one of those two candidates has a 100 μ m detection based on the 24 μ m position. The high number of non-detections may very well be due to the fact that fluxes at these wavelengths for $z > 3$ galaxies are below the detection limits of the survey, rather than indicating a lack of (faint) AGN presence. To test for this possibility we have repeated the X-ray stacking in the *Chandra* 4 Ms imaging for this subsample of LBGs as in Williams et al. (2014). We find that the spectroscopic candidates show a very marginal detection in the soft band only, with only 1.6 σ significance. The average luminosity implied is 3.8×10^{41} erg sec $^{-1}$ cm $^{-2}$, too low to be the result of AGN activity. There is no significant detection in the hard band, suggesting that the soft-band detection, if real, is most likely due to star formation rather than AGN activity. The non-candidate sample do not show significant stacked signal in either band.

3.5. C IV and He II Properties

Figure 14 shows that candidates have larger equivalent width of C IV both in the absorption and emission components of the P-Cygni profile, as well as He II in emission. The non-candidate spectrum, however, exhibits smaller equivalent widths in both absorption and emission components of C IV and have no detected He II in emission. We measure the equivalent widths as in Section 3.2, and list the measured equivalent widths for each sample in Table 2. In this section, we present analysis of AGN contribution and constraints on the properties of their stellar populations based on these two features in the spectra of the two samples.

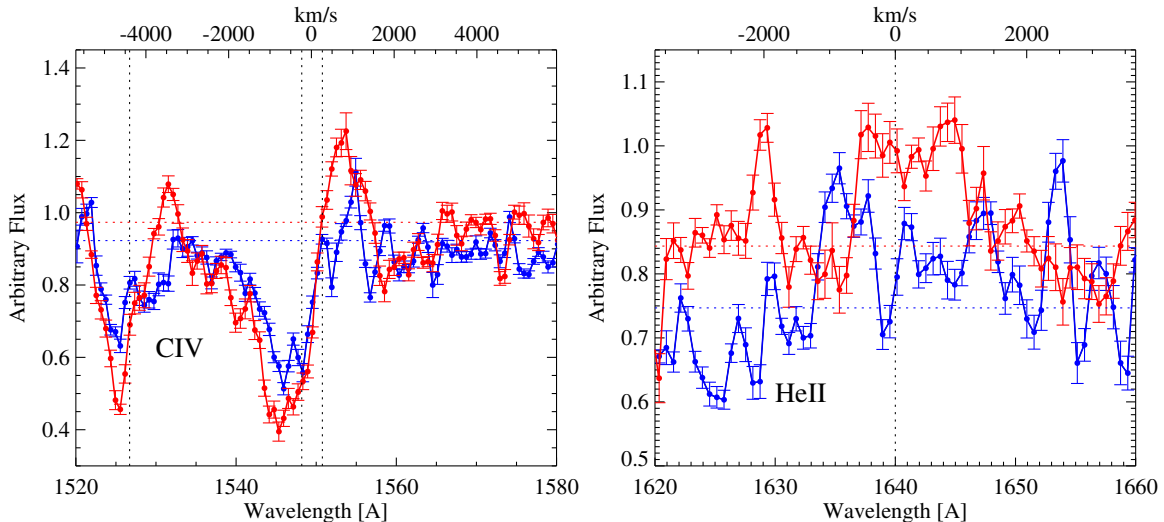


Figure 14. Zoom-ins of C IV and He II visible in candidate (red) and non-candidate (blue) spectra in Figure 5. Error bars reflect sample standard deviation, as described in Section 2.4. The horizontal dotted lines indicate the continuum level measured from the candidate (red) and non-candidate (blue) stacks for each line.

3.5.1. Emission Lines and AGNs

The presence of AGNs can be identified by broad emission lines, and assessed using a host of emission line diagnostics (Baldwin et al. 1981; Veilleux & Osterbrock 1987; Dopita & Sutherland 1996; Kewley et al. 2006). Unfortunately without rest-frame optical (observed near-infrared) spectroscopy we miss a large set of potential emission line probes of AGNs. Rest-frame UV spectroscopy of narrow-line and broad-line AGNs have been studied among the LBG samples in Steidel et al. (2002); Hainline et al. (2011). The stacked spectra of these LBGs with AGNs differ significantly from either of our samples, in that they exhibit strong and broad emission in many high-ionization lines including N v N IV], and C IV and also the low-ionization line He II. We detect neither N v nor N IV]. We detect both C IV and He II in emission in the candidate spectrum, but their properties are very different from what is observed in AGNs. The C IV emission is clearly a P-Cygni profile and, like He II is commonly observed among SFGs and lacks the strong and broad emission characteristic of AGNs. We compute the ratio of the equivalent widths of C IV and He II to compare with typical AGN values.

We find an equivalent width ratio of C IV to He II of 0.5 ± 0.1 , well below the AGN diagnostic ratio >1.5 for narrow-line AGNs and high-redshift radio galaxies (McCarthy 1993; Corbin & Boroson 1996; Humphrey et al. 2008; Matsuoka et al. 2009), showing that even if an AGN were present, it would be very weak and in any case not a significant contributor to the emission lines.

As a comparison, Hainline et al. (2011) find that the equivalent widths of C IV and He II in a composite spectrum of narrow-line AGNs in LBGs at $z \sim 2-3$ would yield a line ratio of $\sim 2 \pm 0.2$, well in excess of what we find in the candidate stack. Their subsample of AGNs that have Ly α equivalent width $<63 \text{ \AA}$, which is their subsample of AGNs with the weakest emission lines and the lowest C IV/He II ratio, is still in excess of what we find, with a ratio equal to 1.5 ± 0.4 . Although this may not be a conclusive rejection of AGN presence in these galaxies, to the best of the ability of the data we have available, we do not see obvious evidence that either sample is dominated by AGN activity. Further exploration of this possibility will be possible with NIR spectroscopy, to access the rest-frame optical emission lines in these galaxies.

3.5.2. Contribution from Massive Stars and Their Properties

Both the C IV P-Cygni feature and the He II emission line, which originate from Wolf-Rayet (WR) and other massive stars, are specifically related to the stellar metallicity, because the higher opacity results in increased radiation pressure (Vink & de Koter 2005). Additionally, the mass loss rates for WR stars appear to be metallicity dependent, with higher mass loss rates for increased metallicity (Vink & de Koter 2005). Thus, the ratio of WR stars to O type stars correlates with metallicity, in the sense that at higher metallicity, more O stars evolve through a WR phase because the mass threshold for evolving through the WR phase is lower. At lower metallicity the threshold for a WR phase is at a much higher mass, and therefore, for a given IMF, fewer stars will become WR (Maeder 1991; Meynet 1995; Crowther et al. 2002; Gräfener & Hamann 2005; Meynet & Maeder 2005; López-Sánchez & Esteban 2010). Therefore, an increase in the metallicity of a galaxy increases the likelihood of observing WR-associated features (Brinchmann et al. 2008b, 2008a).

The presence and luminosity of the He II emission line in the spectra of WR stars also depends on the metallicity (Crowther & Hadfield 2006), and in low-metallicity WR stars, the line may be absent altogether. Brinchmann et al. (2008b) find that in an (instantaneous) starburst model, the He II emission from O-type stars will increase until the emission peaks during the WR phase of the stars formed in the burst. In the case of continuous star-formation, however, the equivalent width of He II will eventually plateau at equivalent width $\sim 1.5 \text{ \AA}$ until star-formation ceases, provided the metallicity is at least half solar (Brinchmann et al. 2008b). It is interesting to note that in Table 2 we measure an equivalent width in He II of $1.9 \pm 0.3 \text{ \AA}$, roughly consistent with their value. In any case, the presence of the line in the candidate average spectrum and its absence in that of the non-candidates suggests that the former have higher metallicity than the latter, in agreement with the relative strength of the C IV feature.

In the rest of this section, we investigate evidence for metallicity differences using what indicators we have available in the rest-frame UV. Rix et al. (2004) established a variety of UV metallicity indicators, based on photospheric blends of iron in massive stars (the 1978 \AA index). Due to the high-redshift of our galaxies and relatively noisy spectra, we do not have good signal to noise in this spectral region of our stacks. Other metallicity

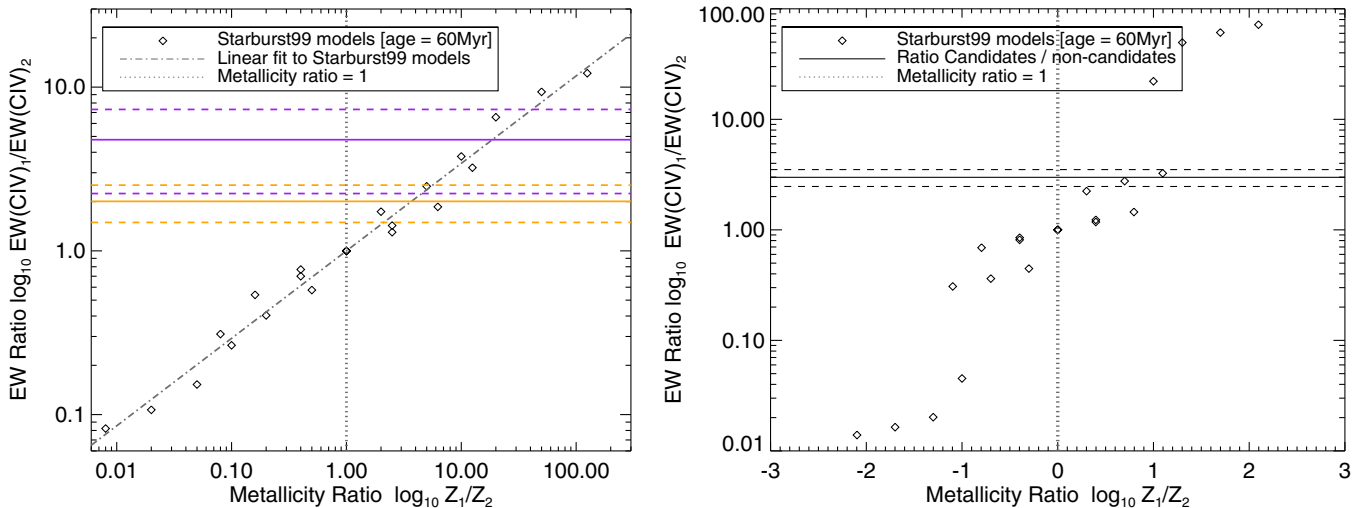


Figure 15. Metallicity is related to equivalent width (EW) of C IV, such that equivalent width increases with increasing metallicity. The relationship between EW of C IV and metallicity is quantified using Starburst99 models (Leitherer et al. 2010) of varying metallicity generated as described in the text. Left panel: the relationship between the ratio of equivalent width in C IV (absorption component) for any two Starburst99 models as a function of the metallicities of those models (points). Each diamond point represents the ratio of equivalent width in C IV absorption of two models, as a function of the metallicity of ratio. The observed ratio in C IV equivalent width of candidates to non-candidates (stellar absorption component, with approximate ISM contribution removed), is indicated by the horizontal lines (purple lines are the ratio where the ISM contribution is taken from the Si IV λ 1393 line, and orange lines are the more conservative estimate of the ISM contribution from the line with the largest equivalent width. Dotted lines are propagated equivalent width errors. Right panel: same as left panel, but the equivalent width of C IV is the emission component. The observed ratio of the emission component is the solid line, and dashed lines indicates propagated equivalent width errors. Candidates appear more metal enriched than non-candidates based on their C IV properties.

indices exist based on photospheric blends between 1370–1500 Å (Leitherer et al. 2001; Rix et al. 2004; Sommariva et al. 2012), in regions of our stacks with higher signal-to-noise. These indices have been used as metallicity indicators using bright lensed LBGs (Quider et al. 2009, 2010; Dessauges-Zavadsky et al. 2010), and also on a stack of 75 spectra at $z \sim 2$ (Halliday et al. 2008). It is unclear if with the noisiness of the continuum in our stacks and the redshift uncertainties that these would provide robust measures of metallicity. However, as mentioned above, stellar wind lines in the UV are metallicity dependent, and Keel et al. (2004) also noted the metallicity dependence of the C IV P-Cygni profile properties in observations, very similar to those in spectral synthesis codes (Rix et al. 2004; Eldridge & Stanway 2009), such that both the absorption and emission components increase their equivalent width with increasing metallicity. Such properties of the winds of hot massive stars, and their variation with metallicity, have been incorporated into the Starburst99 library of theoretical UV spectra (Leitherer et al. 1999, 2010).

Although it is not possible to use the exact equivalent width to estimate the average metallicity of the galaxies in the stack using these models, we can use them in a *relative* way to try to estimate how much more metal rich the candidates may be than the non-candidates, based on their stellar wind signature. To illustrate further the dependence on metallicity of both the emission and absorption component of the C IV P-Cygni profile in (purely stellar, excluding interstellar absorption) spectra, we have calculated the equivalent width of both components in Starburst99 models of varying metallicity. We have generated models at the five metallicity intervals available (0.05, 0.2, 0.4, 1, 2 Z_{\odot}) with continuous star-formation at an age of 60 Myr. We convolve the model spectra with a Gaussian of FWHM matching that of our observed VLT spectra, and calculate the equivalent width in both the emission and absorption components of C IV from each model. To illustrate the variation in C IV properties between any two models of differing metallicity, we calculate the equivalent width ratio (i.e., equivalent width of C IV₁/

equivalent width of C IV₂) and plot it as a function of metallicity ratio, z_1/z_2 in Figure 15. The left panel of Figure 15 shows this for the stellar C IV absorption component from the models (points), where it is obvious that the equivalent width ratio in stellar absorption is strongly correlated with the metallicity ratio. The equivalent width ratio is related to the metallicity ratio as a well-fit power-law. The C IV absorption in our spectra, however, are a blend of both stellar absorption as in the Starburst99 models, but also interstellar absorption, and from these data it is impossible to separate the two components. Therefore, we cannot use the measured C IV absorption as an estimate of metallicity.

The emission component, however, both in the models and our observed stacks is indeed stellar in origin. In the right panel of Figure 15, we repeat the same comparison for the emission component. The variation in equivalent width of the emission component is a bit more complicated than the absorption, but a trend of increasing equivalent width with metallicity is still apparent. We measure the observed ratio of equivalent width in the C IV emission in the candidate stack to that of the non-candidates, and include this as a horizontal line in the right panel of Figure 15. The dashed lines represent the propagated errors from the equivalent width measurements. Although the complicated nature of the equivalent width ratio of emission as a function of metallicity ratio precludes a robust translation of equivalent width ratio to value of metallicity ratio (as for example might be possible using the linear fit to the absorption component), the intersection of the observed ratio with the relation from the models clearly corresponds to a ratio larger than 1, indicative that the candidates have larger metallicity than non-candidates.

Although the emission components of C IV are stellar in origin, their equivalent width may be eroded by interstellar absorption near systemic, and it is impossible to tell if it preferentially does so in one sample versus the other. Therefore, we see if the C IV absorption component at least agrees with

our conclusion of increased metallicity after some simple assumptions.

In both stacks, C IV absorption equivalent width exceeds that of the other ISM lines on average by a factor of two, indicative of the additional contribution of stellar absorption. To compare the measured absorption component of C IV equivalent width from the stacks to the Starburst99 models, we first use the other ISM absorption lines as proxies for the interstellar component in the absorption of C IV. We do this two conservative ways. We first subtract an estimate of the contribution to the equivalent width from interstellar absorption using the largest equivalent width for the high-ionization line Si IV, which comes from the Si IV $\lambda 1393$ line in both samples. We then calculate the equivalent width ratio of candidates to non-candidates, using these ISM-corrected stellar C IV equivalent widths. This result, with the propagated errors on the equivalent width measurement, is shown as purple horizontal lines in the left panel of Figure 15. We repeat the ISM-corrected equivalent width ratio using a more conservative estimate of the ISM contribution, by using the largest equivalent width of all ISM lines we measure, that of the blend O I/Si II $\lambda 1303$ (orange). We find that in both cases, the ratio of equivalent widths imply that candidates are more metal enriched relative to non-candidates, by at least a factor of two, and quite possibly larger, in agreement with the findings from the emission component.

4. DISCUSSION

The observations that we have presented are concordant in showing that (1) the candidates exhibit more energetic feedback than the non-candidates in the form of more turbulent bulk motions in the ISM; (2) the candidates have more intense Ly α emission along with strong interstellar absorption, significantly deviating from the general trend of LBGs, pointing to a distribution of H I that is more conducive to the escape of Ly α photons than in the non-candidates; (3) the candidates have larger metallicity than the non-candidates. We now discuss these three lines of evidence in more detail.

4.1. Evidence for Differences in Feedback in the ISM

Figures 6 and 13 show that on average the candidates exhibit strong, redshifted Ly α emission, in combination with large equivalent width of interstellar absorption lines, characteristics that strongly deviate from the overall trend observed in LBGs at $z \sim 3$. Strong Ly α emission may escape a star-forming galaxy if the ISM has patchy distribution around the production regions, i.e., if there are holes punched in the neutral medium by ionizing sources, or, if the line is generated in the receding part of the outflow and is redshifted to an extent that its wavelength is too long for resonant scattering by the intervening ISM. In this section, we discuss the evidence for each of these processes in our samples, and the implications they have for energizing the ISM.

4.1.1. Holes in Neutral Gas and the Covering Fraction

Evidence of holes in the ISM of very compact SFGs has been reported by Heckman et al. (2011), who have studied local analogs to LBGs with high-resolution UV spectroscopy. The authors found that among galaxies that exhibit significant leakage of Ly α , and also of ionizing radiation, 75% also contain a very compact star-forming region (identified as a dominant compact object; DCO). The interpretation is that

holes in the ISM, presumably created by feedback in the dense environment, allow both ionizing and Ly α photons to escape. As a consequence, they also observed that the stellar continuum partially filled in absorption lines. In these cases, the Ly α emission is observed as either a single peak Ly α line with significant flux blueshifted relative to the resonant wavelength of the line, or, as a double-peaked line with the secondary peak located blue ward of the resonance wavelength. Between 30% and 75% of the total emission equivalent width of the line is contributed by wavelengths bluer than resonance. Galaxies with no filled-in interstellar lines and no leaking ionizing radiation have no Ly α emission at wavelengths bluer than the resonance one.

Our candidate sample is similar to that of the DCO, in that their Σ_{SFR} are of similar order (the DCO have SFR $\sim 10^1 M_{\odot} \text{yr}^{-1}$ and radii ~ 100 pc), and velocities from ISM line centroids in excess of 700 km s^{-1} . In both stacks, despite being redshifted relative to the resonance wavelength by several hundred km s^{-1} we still observe some Ly α emission at wavelength bluer than the resonance one. However, we found a lower fraction of the emission equivalent width is contributed by these blue wavelengths compared to the galaxies in Heckman et al. (2011). Specifically, we find 7% for the candidates and 15% in the non-candidates, which suggests that the distribution of H I around the regions of Ly α production has holes.

We do not observe any obvious filling-in of the interstellar lines as observed in the spectra of the leaking DCOs, although this could be an effect of the lower resolution of our spectra compared to those by Heckman et al. (2011). In low resolution spectra such as ours, however, the equivalent width of saturated absorption lines, like the low-ionization metal lines that we are considering here, does not depend on the column density of the absorbing trough but on the velocity spread of the individual clouds and the covering fraction. Thus, it is possible that any fill-in of the lines is diluted at our resolution and lost in the general velocity field of the trough. Although the absorption lines are stronger in the candidates, the physical interpretation of this fact is not necessarily clear given the degeneracy between velocity spread and covering fraction.

Whether or not this difference in Ly α properties between candidates and non-candidates is due to a difference in the neutral gas covering fraction is difficult to say. In both samples, the fraction of blue shifted Ly α is uncertain due to the uncertainties in the systemic redshift estimates. In the case of the candidates, the majority of the Ly α emission is strongly redshifted, which may indicate that the emergence of the Ly α flux is modulated significantly by outflows. We will discuss evidence for this point in depth in Section 4.1.2. Nevertheless, a difference in the H I covering fraction between our samples is qualitatively consistent with the morphologies shown in Figure 2. This figure illustrates the differences in morphology between our samples with rest-frame UV (tracing star-forming regions) and optical color (tracing the stellar distribution) composites. Non-candidates generally appear to be less concentrated, with more extended and disturbed morphologies, and most importantly often show the presence of UV flux from unobscured star-forming knots. Meanwhile, the candidate sample are characterized by smaller half-light radii and steeper Sersic indices ($n > 2$) (Williams et al. 2014), indicative of dense bulge-like stellar distributions. Thus, it is worth noting that the differences we observe in the ISM as probed by the Ly α properties could be related to morphology. Previous studies have found links between ISM properties, outflows and morphology. Law et al.

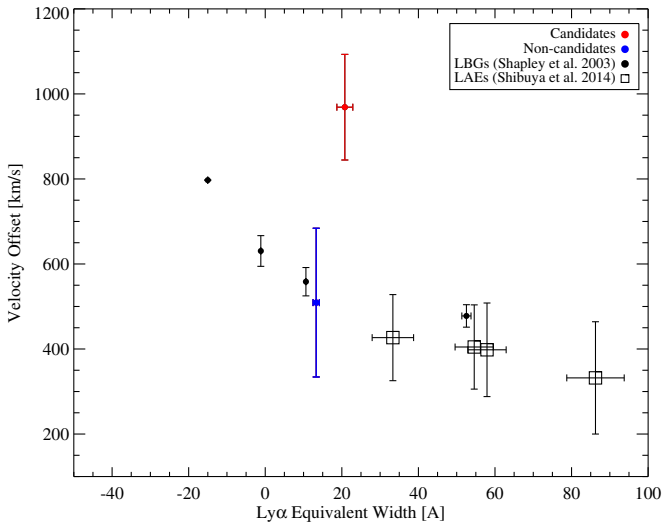


Figure 16. Relationship between equivalent width of Ly α and velocity offset between Ly α and interstellar absorption lines. As equivalent width of Ly α decreases the velocity offset increases. The candidates lie significantly off this trend. In black are data reproduced from Shapley et al. (2003, LBG at $z \sim 3$; circles) and Shibuya et al. (2014, Ly α emitters; LAEs; squares).

(2012) found that larger LBGs in general may exhibit a decreased gas evacuation efficiency from feedback based on their measurements of less strongly ionized outflows, and larger optical depth of gas at the systemic redshift of the galaxies. They also found the largest absorption line velocity offsets from the smallest galaxies. Our results are qualitatively in agreement with this finding.

4.1.2. Redshifted Ly α

The stronger interstellar absorption of the candidates implies a larger spread of velocities in the absorbing trough, which in turn suggest that their gas kinematics is more turbulent than the non-candidates, likely as the result of a more extreme feedback in their denser environment. This is also in qualitative agreement with the faster velocity spread of the outflowing component of the candidates. The relatively exceptional ISM of the candidates is illustrated in Figure 13, which shows that while the equivalent widths of Ly α emission and interstellar line absorption of the non-candidates follow the general trend observed for LBG at $z \sim 3-4$, the candidates markedly deviate from it because their Ly α emission is too strong given the amount of interstellar absorption. In fact, given the equivalent width of the interstellar lines of the candidates, their Ly α should have been observed in absorption had they followed the general trend.

Another evidence that the Ly α emission from the candidates is, on average, significantly different from that of the general LBG population is illustrated in Figure 16 (adapted from Shapley et al. 2003; Shibuya et al. 2014). This figure shows another trend characteristic of both LBGs and also Ly α emitters at $2 < z < 3$, which is that the velocity offset between Ly α and ISM absorption lines decreases as the equivalent width of the Ly α increases. Galaxies with stronger Ly α emission exhibit lower velocity offsets, whereas galaxies with Ly α in absorption exhibit the larger velocity offsets. Other studies find similar trends (Vanzella et al. 2009; Jones et al. 2012; Song et al. 2014), although Berry et al. (2012) do not find this correlation very significant on an individual galaxy basis, presumably due to the larger scatter in the measurements from individual spectra. Our two average spectra show that while the non-candidates

are in very good agreement with this general trend, the candidates strongly deviate from it, in the sense that their average velocity offset (the mean value of all lines from Figure 12 is $\sim 970 \text{ km s}^{-1}$) is much larger than that of the other galaxies given the observed Ly α strength. Again, given the observed velocity spread, the Ly α of the candidates should have been observed in absorption had the general trend be followed.¹⁷ We suggest that winds accelerated to very high speed very close to the galactic center, in combination with fast outflows could produce the deviation from the global trend of LBGs.

The redshifted, high equivalent width Ly α seen among candidates could also be a result of Ly α scattering off H I in the immediate circumgalactic medium, and in particular, the outflowing gas. Diffuse Ly α halos have been seen among LBG at $z \sim 3$, regardless of their spectroscopically determined Ly α equivalent width (i.e., emission or absorption; Steidel et al. 2011). These diffuse halos are faint relative to the UV continuum emitted by the central galaxy but appear to be generically present, independent of the morphological properties of LBG. In some cases, the total Ly α flux from halo regions between 2 and 4 arcsec around the galaxies is similar to that being emitted from the central 2'' (see Hayashino et al. 2004). The main driver of the Ly α emission in the halos is likely the fraction of photons that are able to escape the central regions (Steidel et al. 2011).

The faintness of these diffuse halos can to some extent be attributed to a decreased density of the outflowing neutral gas with radius as the outflow increases volume, and the fact that escaping Ly α photons end up distributed over the much larger projected area of the halo. A simple model of such outflowing media was outlined in Steidel et al. (2010), who showed that scattering of Ly α photons off circumgalactic gas in a high-velocity, spherically symmetric outflow with a uniform velocity field (i.e., independent of galactocentric radius) and a covering fraction that is radially dependent could explain the redshifted Ly α emission seen in LBGs. In this context, it is possible that the high-velocity outflowing medium immediately surrounding the candidate galaxies at small galactocentric radius could be capable of redshifting the Ly α we observe. As discussed in Steidel et al. (2011), if strong Ly α is observed in combination with strong interstellar absorption, the two must be originating from physically distinct regions, or the Ly α would be modified (e.g., the global trend in Figure 13 seen by Shapley et al. 2003; Jones et al. 2012). It is possible that, due to the strong outflowing medium in combination with the compact sizes of our galaxies, that dense, outflowing circumgalactic material at small galactocentric radius may scatter sufficient Ly α to reproduce the Ly α profiles we observe.

Mapping scattered light from outflowing material outside the ISM of the galaxy may confirm or reject this interpretation either through narrow band imaging or spectroscopy (e.g., Steidel et al. 2011; Martin et al. 2013). We conclude based on this data that the deviations of candidates from the trends of LBGs in terms

¹⁷ We noted in Section 2.3 that were we to adopt other methods of deriving systemic redshifts, we would still arrive at all our main conclusions. This is not entirely true in the case of the Ly α velocity offset relative to the interstellar absorption lines; using the method of Adelberger et al. (2005), the mean velocity offset measured from the candidate stack decreases to $\sim 560 \text{ km s}^{-1}$, and is identical to non-candidates. This is expected, as this method assumes all our galaxies have the same average velocity offsets of their galaxy sample, and ignores inherent differences between our two samples. We still detect faster velocity spread in the outflowing component from the ISM lines themselves compared to non-candidates using the Adelberger method; however, the candidates' deviation from the overall LBG trend in Ly α equivalent width and velocity difference is smaller. However, the high equivalent width of Ly α remains.

of their Ly α properties and other ISM properties is an indication of a larger fraction of gas moving at higher speed, suggestive that feedback is more effective in compact LBGs.

4.1.3. Implications

Taken all together, the larger bulk velocity of ISM gas in the candidates, their larger velocity field and/or covering fraction as traced by the strength of the interstellar absorption, the presence of significant Ly α emission blue ward of the line resonant wavelength as well as the overall strength of the Ly α emission lines, delineate a scenario where the ISM of these galaxies is subject to a more extreme form of feedback compared to the non-candidates and the general LBG population. This feedback would accelerate galactic winds to higher speed at shorter distance from the galaxy center than in non-candidates (so that the surface brightness of the Ly α line remains high and contributes to observed flux) and create a patchy distribution of neutral hydrogen such that Ly α photons can escape, including those close to the resonance wavelength or even blue ward of it (the presence of which would need to be confirmed with higher dispersion spectra). The more extreme feedback also produces a generally more turbulent ISM. Since the candidates differ from the non-candidates for being more compact, and having higher surface density of star-formation, their more extreme feedback might be the result of the denser environments where star formation takes place. We will discuss this point in depth in Section 4.3.

4.2. The Origin of Faster Winds among Candidates

In Section 3 we presented evidence that the compact LBG studied here have fast (weighted mean velocity -426 km s^{-1}) blueshifted velocity offsets measured from ISM absorption lines, with significantly larger equivalent width seen among candidates. Understanding the origin of the large velocity spread in the wind is important in the context of star-formation quenching. The presence of these strong winds in candidates, which are clearly more powerful than those in more normal SFGs of similar mass at similar epoch, i.e., the non-candidates (weighted mean velocity -262 km s^{-1}), is an indication that the conditions in the ISM of candidates may be more hostile to cold gas, and lends support to the hypothesis of Williams et al. (2014) that the candidates may quench sooner than normal SFGs. In this section, we discuss the plausible origins for this outflowing component.

Conventionally the generation of fast winds ($\sim 1000 \text{ km s}^{-1}$) have been attributed to AGNs (Trump et al. 2006; Tremonti et al. 2007; Sturm et al. 2011; Rupke & Veilleux 2013; Gabor & Bournaud 2014; Genzel et al. 2014), but see also Coil et al. (2011). For candidates, the properties of emission lines from our limited data do not indicate evidence of a detectable AGN. The rest-frame UV spectroscopic properties of AGNs among LBGs at $z \sim 2-3$ have been studied by Steidel et al. (2002); Hainline et al. (2011), and do not share similar properties with our candidate sample. If an AGN is present but obscured, this could prevent its presence from being detected in the He II/C IV emission line ratio. In a recent analysis of a compact post-starburst galaxy from the sample of candidate progenitors of local passive galaxies (Marchesini et al. 2014), Cemile Marsan et al. (2014) do find evidence of an obscured AGN using rest-frame optical emission lines. Their galaxy, like ours, is not X-ray detected, and has a similarly small C IV/He II emission line ratio (~ 0.8). However, Rupke et al. (2005) and Krug et al. (2010) found that obscured AGNs do not launch high-speed

large-scale outflows, and rather only launch local outflows near the central black hole. Further analysis including rest-frame-optical spectroscopy will be necessary to investigate further the presence of AGNs and its effect in driving winds in compact LBGs.

Whether or not star-formation driven (or supernova (SN) driven) winds are capable of halting star-formation on galaxy scales is still a matter of debate. Starburst driven winds often occur with lower velocities ($\sim 500 \text{ km s}^{-1}$; e.g., Fabian 2012). However, evidence that star-formation can launch high-velocity winds is accumulating, especially at high SFR surface densities, (Heckman et al. 2011; Diamond-Stanic et al. 2012; Bradshaw et al. 2013; Sell et al. 2014).

Our candidates have on average larger SFRs (although overlapping distributions in SFR), but have distinctly higher surface density of star-formation (see Figure 1). As discussed in Section 4.1, their surface density of SFR are similar to those of the DCO, whose outflows were determined to be star-formation driven (Overzier et al. 2009; Heckman et al. 2011). Therefore it is possible that the surface density of star-formation is related to our detection of differences in outflow velocities. (Nevertheless, as we showed in Section 3, our data is also consistent with the scaling relation presented in Martin (2005) between velocity and SFR.) Based on conflicting evidence in the literature, it is unclear if outflow velocities in SFGs are universally correlated with SFR or SFR surface density (Martin 2005; Rupke et al. 2005; Erb et al. 2012; Weiner et al. 2009; Sato et al. 2009; Rubin et al. 2010; Steidel et al. 2010; Chen et al. 2010; Kornei et al. 2012; Law et al. 2012; Bordoloi et al. 2014; Lee et al. 2013b; Song et al. 2014). With this data it is not possible to identify whether star-formation or surface density of star-formation is more strongly correlated with gas velocity in our galaxies.

Our detection of significant populations of massive evolving stars (i.e., the WR population), which currently affect the ISM with their strong winds, is consistent with this idea that the outflowing gas we detect are star-formation driven. The feedback from radiation and winds of the massive stars themselves (while on the main sequence) is especially significant at high stellar surface densities, leading (Hopkins et al. 2010) to conclude that feedback from massive stars sets a limit on stellar surface densities in galaxies ($\Sigma_{\text{max}} \sim 10^{11} M_{\odot} \text{ kpc}^{-2}$; similar to that observed in $z \sim 2$ ultra-compact passive galaxies; Cassata et al. 2011, 2013). These WR stars are expected to form SNe on short timescales. It has been shown that SNe from concentrated groups of young stars, such as that in large star-clusters, may be more effective at evacuating gas than isolated SNe (e.g., Murray et al. 2011; Nath & Shchekinov 2013; Sharma et al. 2014). Therefore, in such compact galaxies as our candidate sample, the compact stellar configurations of both the massive stars and SNe could thus be very effective at evacuating gas, compared to more extended distributions of stars.

4.3. Evidence for Differences in Metallicity

The implication that candidates exhibit higher metallicities may be important for the efficacy of feedback in the near future (i.e., over the next Gyr) as these galaxies evolve. If a significant portion of the feedback in these galaxies comes from a dense concentration of high-mass stars with strong stellar winds affecting a very concentrated distribution of cold ISM gas, this feedback may increase its impact as the metallicity of the galaxy continues to increase.

The strength of winds from WR stars in particular, the features of which we have observed in the candidate sample, is dependent strongly on metallicity (Vink & de Koter 2005), with wind velocity and mass loss (and therefore momentum) increasing with increasing metallicity (e.g., Leitherer et al. 1992; Kudritzki & Puls 2000; Crowther 2000, 2007; Nugis & Lamers 2000; Crowther & Hadfield 2006; Mokiem et al. 2007). Over time, therefore, as more metal enriched young stars produce stellar winds, the energy deposition to the surrounding dense ISM is expected to increase.

Although calibrating our metallicity measures onto an absolute scale is not possible with our data, and therefore it is unclear that candidates are already at metallicities high enough to be consistent with those of passive galaxies, the suggestion of enhanced metallicities does provide evidence for a more advanced evolutionary state. It is not currently possible to identify differences in the star-formation timescale of the two samples. Future robust measurements of metallicities and abundance ratios may be able to differentiate between a scenario where the candidate sample form stars on a faster timescale and quench earlier, or, form earlier on a similar timescale (but formed stars longer).

The presence of strong WR features, which arise during relatively short phases (10^5 yr) relative to the much larger timescale probed by the stack, argues for a relatively continuous SFH, perhaps driven by cold accretion, rather than burst-like star-formation from mergers that could elevate their star-formation during short periods of time. We argue that the enhanced metallicity of the candidates relative to the non-candidates is consistent with the idea that the former form their stars on a faster timescale than the latter during a period of sustained dissipative accretion of gas. Direct constraints on this interpretation will be possible with future NIR spectroscopic observations that would not only allow robust systemic redshifts to be measured, but also metallicity measurements, including α/Fe abundances, which could directly test our interpretation that these galaxies follow a faster evolution than normal main sequence galaxies.

4.4. Are the Candidates about to Quench Star Formation?

As detailed in Williams et al. (2014), the candidates have been selected based on their morphology, stellar mass and SFR to reproduce the observed properties of the CPG at $z \sim 2$, assuming that *they quench their star formation activity* shortly after the epoch of observation. Is this assumption well posed and is there any evidence that supports it?

We have provided evidence that the kinematics of the ISM of the candidates shows that they are subject to a more energetic feedback than the non candidates. The half-light radius of the candidates is $\approx 2\times$ smaller than the non-candidates, and since their average stellar mass is the about the same, the stellar density is $\approx 8\times$ higher. The velocity centroid of the outflowing component of the gas in candidates also is $\approx 2\times$ faster. Thus, the mechanical energy density of the ISM of the candidates is roughly $32\times$ larger than that of the non candidates. Since the SFR of the candidate also is larger by about $2\times$, the radiation energy density contributed by massive stars is also larger by the same amount.

The larger energy deposited in the ISM of the candidates is likely to increase its turbulence, temperature and ionization state, and this is broadly consistent with the observed Ly α properties, strength of the IS absorption lines and presence of He II emission. The larger SFR is also likely to result in

large metallicity, which is also consistent with the stronger C IV emission of the candidates. Their larger SFRs would also produce more dust, except that the larger radiation field and higher ISM temperature are likely to be conducive to destruction of dust grains more effectively than in the non-candidates, a scenario that is supported by the far-IR observations that show that dust-reprocessed emission is detected among the non-candidates but not among candidates, despite their larger SFR (Williams et al. 2014).

There is no evidence for AGN activity either in the X-ray emission or in the UV spectra of the candidates (as well as the non-candidates). So, if the quenching has to come by feedback, then this is likely to be provided by star formation through heating and removal of gas. The outflow velocity of both candidates and non candidates are very likely larger than the escape velocity from the regions where the stars are forming, $v_{esc} \sim \sqrt{2GM_{star}/r_e} \approx 300 \text{ km s}^{-1}$ for the candidates and $\approx 200 \text{ km s}^{-1}$ for the non candidates if the dark matter gravity can be neglected within the radius where star formation is observed. We have no direct information about the mass loading of the outflows, but if it is roughly proportional to the SFR (Heckman et al. 2011), then over a similar period of time, e.g., from $z \sim 3$ to $z \sim 2$, the candidates will have ejected one order of magnitude more gas in $\approx 1/5$ of the time than the non candidates, because their SFR is higher ($2.5\times$), the velocity of outflowing component of ISM gas is larger ($2\times$) and their size is smaller ($2\times$). Combined with heating the gas to a larger temperature, this might be sufficient to quench them.

Thus, it seems to us physically motivated to think that the candidates might quench their SFR sooner and in a shorter time scale than the non-candidates. This supports the validity of the selection criteria (which was based solely on morphology, stellar mass and SFR) that we adopted to identify them as progenitors of $z \sim 2$ CPGs. Unfortunately, we are not aware of any way at this time to quantitatively predict, based on the observed properties of the candidates, e.g., their $\approx 30\times$ energy density relative to the non-candidates, when and how fast they will quench. An additional question is whether the feedback is sufficient to prevent ejected gas recycling, such that cooling gas is prevented from refueling future star-formation. Future observations at (sub)millimeter wavelengths of the dust content and cold gas morphology and kinematics, e.g., with ALMA, as well as future refinement of theoretical modeling of feedback, will provide a path to progress.

5. SUMMARY

We have presented rest-frame UV spectroscopy of a sample of LBGs that may be the progenitors of the high-redshift CPGs, compared with that of more normal LBGs (in terms of the mass–size relation). We find evidence for faster outflowing gas among these candidate progenitors relative to non-candidate LBGs as traced by blue shifted interstellar absorption lines. These lines also have higher equivalent widths, indicative of a higher velocity dispersion among intervening clouds in the ISM. This strong interstellar absorption is seen in combination with strong, redshifted Ly α which may be explained by strong outflows. Analysis of emission lines present in the rest-frame UV spectrum do not suggest the presence of an AGN, and we conclude that the outflows are star-formation driven. We see significant features due to massive stars in candidates, in particular those of metal rich WR stars (C IV and He II), and argue that this is evidence that candidates are more metal enriched than normal, extended LBGs at that epoch. This could be a result of an

earlier formation time, or a more rapid evolutionary timescale. We conclude that these plausible progenitors are distinct from normal LBGs (at the same mass and epoch) and further investigation of this sample, in particular with larger samples and NIR spectroscopy, will put important constraints on quenching mechanisms affecting compact galaxies at high-redshift.

We thank the anonymous referee whose valuable suggestions have improved the paper significantly. The authors thank Naveen Reddy and Charles Steidel for graciously providing the HIRES spectrum of D6. We also thank Alvio Renzini for reading this document and providing his valuable and insightful comments. C.C.W. thanks Shawn Roberts, Joseph Burchett, Todd Tripp, Joseph Meiring, Claudia Scarlata, Eric Gawiser, Nadia Zakamska, Sanchayeeta Borthakur, and Brandon Bozek for enlightening discussions. This work is based on observations taken by the CANDELS Multi-Cycle Treasury Program with the NASA/ESA *HST*. We acknowledge support from grant program NSF AST 08-8133, and support for *HST* Program GO 12060.10-A was provided by NASA through grants from the Space Telescope Science Institute, which is operated by the Association of Universities for Research in Astronomy, Inc., under NASA contract NAS5-26555.

REFERENCES

- Adelberger, K. L., Steidel, C. C., Pettini, M., et al. 2005, *ApJ*, 619, 697
- Baldry, I. K., Glazebrook, K., Brinkmann, J., et al. 2004, *ApJ*, 600, 681
- Baldwin, J. A., Phillips, M. M., & Terlevich, R. 1981, *PASP*, 93, 5
- Banerji, M., Chapman, S. C., Smail, I., et al. 2011, *MNRAS*, 418, 1071
- Barro, G., Faber, S. M., Pérez-González, P. G., et al. 2013, *ApJ*, 765, 104
- Bell, E. F., van der Wel, A., Papovich, C., et al. 2012, *ApJ*, 753, 167
- Belli, S., Newman, A. B., & Ellis, R. S. 2014, *ApJ*, 783, 117
- Berry, M., Gawiser, E., Guaita, L., et al. 2012, *ApJ*, 749, 4
- Bezanson, R., van Dokkum, P., van de Sande, J., Franx, M., & Kriek, M. 2013, *ApJL*, 764, L8
- Bezanson, R., van Dokkum, P. G., Tal, T., et al. 2009, *ApJ*, 697, 1290
- Birnboim, Y., & Dekel, A. 2003, *MNRAS*, 345, 349
- Blanton, M. R., Eisenstein, D., Hogg, D. W., Schlegel, D. J., & Brinkmann, J. 2005, *ApJ*, 629, 143
- Bordoloi, R., Lilly, S. J., Hardmeier, E., et al. 2014, *ApJ*, 794, 130
- Bournaud, F., Chapon, D., Teyssier, R., et al. 2011, *ApJ*, 730, 4
- Bradshaw, E. J., Almaini, O., Hartley, W. G., et al. 2013, *MNRAS*, 433, 194
- Brinchmann, J., Kunth, D., & Durret, F. 2008a, *A&A*, 485, 657
- Brinchmann, J., Pettini, M., & Charlot, S. 2008b, *MNRAS*, 385, 769
- Buitrago, F., Trujillo, I., Conselice, C. J., et al. 2008, *ApJL*, 687, L61
- Bundy, K., Ellis, R. S., Conselice, C. J., et al. 2006, *ApJ*, 651, 120
- Bussmann, R. S., Gurwell, M. A., Fu, H., et al. 2012, *ApJ*, 756, 134
- Cameron, E., Carollo, C. M., Oesch, P. A., et al. 2011, *ApJ*, 743, 146
- Cappellari, M., di Serego Alighieri, S., Cimatti, A., et al. 2009, *ApJL*, 704, L34
- Cassata, P., Giavalisco, M., Guo, Y., et al. 2011, *ApJ*, 743, 96
- Cassata, P., Giavalisco, M., Williams, C. C., et al. 2013, *ApJ*, 775, 106
- Cemile Marsan, Z., Marchesini, D., Brammer, G. B., et al. 2014, e-print (arXiv:1406.0002)
- Cen, R. 2014, *ApJL*, 789, L21
- Chen, Y.-M., Tremonti, C. A., Heckman, T. M., et al. 2010, *AJ*, 140, 445
- Cheung, E., Faber, S. M., Koo, D. C., et al. 2012, *ApJ*, 760, 131
- Cimatti, A., Daddi, E., & Renzini, A. 2006, *A&A*, 453, L29
- Cimatti, A., Daddi, E., Renzini, A., et al. 2004, *Natur*, 430, 184
- Coil, A. L., Weiner, B. J., Holz, D. E., et al. 2011, *ApJ*, 743, 46
- Corbin, M. R., & Boroson, T. A. 1996, *ApJS*, 107, 69
- Crowther, P. A. 2000, *A&A*, 356, 191
- Crowther, P. A. 2007, *ARA&A*, 45, 177
- Crowther, P. A., Dessart, L., Hillier, D. J., Abbott, J. B., & Fullerton, A. W. 2002, *A&A*, 392, 653
- Crowther, P. A., & Hadfield, L. J. 2006, *A&A*, 449, 711
- Daddi, E., Renzini, A., Pirzkal, N., et al. 2005, *ApJ*, 626, 680
- Damjanov, I., Hwang, H. S., Geller, M. J., & Chilingarian, I. 2014, *ApJ*, 793, 39
- Damjanov, I., McCarthy, P. J., Abraham, R. G., et al. 2009, *ApJ*, 695, 101
- Davari, R., Ho, L. C., Peng, C. Y., & Huang, S. 2014, *ApJ*, 787, 69
- Dekel, A., & Birnboim, Y. 2006, *MNRAS*, 368, 2
- Dekel, A., & Burkert, A. 2014, *MNRAS*, 438, 1870
- Dekel, A., Sari, R., & Ceverino, D. 2009, *ApJ*, 703, 785
- Dekel, A., Zolotov, A., Tweed, D., et al. 2013, *MNRAS*, 435, 999
- Dessauges-Zavadsky, M., D'Odorico, S., Schaerer, D., et al. 2010, *A&A*, 510, A26
- Diamond-Stanic, A. M., Moustakas, J., Tremonti, C. A., et al. 2012, *ApJL*, 755, L26
- Dopita, M. A., & Sutherland, R. S. 1996, *ApJS*, 102, 161
- Eldridge, J. J., & Stanway, E. R. 2009, *MNRAS*, 400, 1019
- Erb, D. K., Quider, A. M., Henry, A. L., & Martin, C. L. 2012, *ApJ*, 759, 26
- Fabian, A. C. 2012, *ARA&A*, 50, 455
- Fontana, A., Santini, P., Grazian, A., et al. 2009, *A&A*, 501, 15
- Förster Schreiber, N. M., Genzel, R., Newman, S. F., et al. 2014, *ApJ*, 787, 38
- Franx, M., Labbé, I., Rudnick, G., et al. 2003, *ApJL*, 587, L79
- Franx, M., van Dokkum, P. G., Schreiber, N. M. F., et al. 2008, *ApJ*, 688, 770
- Gabor, J. M., & Bournaud, F. 2014, *MNRAS*, 441, 1615
- Genzel, R., Förster Schreiber, N. M., Rosario, D., et al. 2014, *ApJ*, 796, 7
- Genzel, R., Newman, S., Jones, T., et al. 2011, *ApJ*, 733, 101
- Giavalisco, M., Ferguson, H. C., Koekemoer, A. M., et al. 2004, *ApJL*, 600, L93
- Glazebrook, K., Abraham, R. G., McCarthy, P. J., et al. 2004, *Natur*, 430, 181
- Gobat, R., Strazzullo, V., Daddi, E., et al. 2012, *ApJL*, 759, L44
- Gräfenor, G., & Hamann, W.-R. 2005, *A&A*, 432, 633
- Grogin, N. A., Kocevski, D. D., Faber, S. M., et al. 2011, *ApJS*, 197, 35
- Guo, Y., Ferguson, H. C., Giavalisco, M., et al. 2013, *ApJS*, 207, 24
- Guo, Y., Giavalisco, M., Cassata, P., et al. 2012a, *ApJ*, 749, 149
- Guo, Y., Giavalisco, M., Ferguson, H. C., Cassata, P., & Koekemoer, A. M. 2012b, *ApJ*, 757, 120
- Hainline, K. N., Shapley, A. E., Greene, J. E., & Steidel, C. C. 2011, *ApJ*, 733, 31
- Halliday, C., Daddi, E., Cimatti, A., et al. 2008, *A&A*, 479, 417
- Hansen, M., & Oh, S. P. 2006, *MNRAS*, 367, 979
- Hayashino, T., Matsuda, Y., Tamura, H., et al. 2004, *AJ*, 128, 2073
- Heckman, T. M., Borthakur, S., Overzier, R., et al. 2011, *ApJ*, 730, 5
- Hogg, D. W., Blanton, M. R., Brinchmann, J., et al. 2004, *ApJL*, 601, L29
- Holden, B. P., Oesch, P. A., Gonzalez, V. G., et al. 2014, e-print (arXiv:1401.5490)
- Hopkins, P. F., Cox, T. J., Hernquist, L., et al. 2013, *MNRAS*, 430, 1901
- Hopkins, P. F., Hernquist, L., Cox, T. J., Dutta, S. N., & Rothberg, B. 2008, *ApJ*, 679, 156
- Hopkins, P. F., Murray, N., Quataert, E., & Thompson, T. A. 2010, *MNRAS*, 401, L19
- Hsu, L.-Y., Stockton, A., & Shih, H.-Y. 2014, *ApJ*, 796, 92
- Huang, K.-H., Ferguson, H. C., Ravindranath, S., & Su, J. 2013a, *ApJ*, 765, 68
- Huang, S., Ho, L. C., Peng, C. Y., Li, Z.-Y., & Barth, A. J. 2013b, *ApJL*, 768, L28
- Humphrey, A., Villar-Martín, M., Vernet, J., et al. 2008, *MNRAS*, 383, 11
- Johansson, P. H., Naab, T., & Ostriker, J. P. 2012, *ApJ*, 754, 115
- Jones, T., Stark, D. P., & Ellis, R. S. 2012, *ApJ*, 751, 51
- Jones, T. A., Ellis, R. S., Schenker, M. A., & Stark, D. P. 2013, *ApJ*, 779, 52
- Kartaltepe, J. S., Dickinson, M., Alexander, D. M., et al. 2012, *ApJ*, 757, 23
- Kauffmann, G., Heckman, T. M., White, S. D. M., et al. 2003, *MNRAS*, 341, 54
- Kauffmann, G., White, S. D. M., Heckman, T. M., et al. 2004, *MNRAS*, 353, 713
- Kaviraj, S., Cohen, S., Ellis, R. S., et al. 2013, *MNRAS*, 428, 925
- Keel, W. C., Holberg, J. B., & Treuhardt, P. M. 2004, *AJ*, 128, 211
- Kereš, D., Katz, N., Fardal, M., Davé, R., & Weinberg, D. H. 2009, *MNRAS*, 395, 160
- Kereš, D., Katz, N., Weinberg, D. H., & Davé, R. 2005, *MNRAS*, 363, 2
- Kewley, L. J., Groves, B., Kauffmann, G., & Heckman, T. 2006, *MNRAS*, 372, 961
- Koekemoer, A. M., Faber, S. M., Ferguson, H. C., et al. 2011, *ApJS*, 197, 36
- Kornei, K. A., Shapley, A. E., Martin, C. L., et al. 2012, *ApJ*, 758, 135
- Kriek, M., van Dokkum, P. G., Franx, M., Illingworth, G. D., & Magee, D. K. 2009a, *ApJL*, 705, L71
- Kriek, M., van Dokkum, P. G., Franx, M., et al. 2006, *ApJ*, 645, 44
- Kriek, M., van Dokkum, P. G., Labbé, I., et al. 2009b, *ApJ*, 700, 221
- Krug, H. B., Rupke, D. S. N., & Veilleux, S. 2010, *ApJ*, 708, 1145
- Kudritzki, R.-P., & Puls, J. 2000, *ARA&A*, 38, 613
- Kulas, K. R., Shapley, A. E., Kollmeier, J. A., et al. 2012, *ApJ*, 745, 33
- Kurk, J., Cimatti, A., Daddi, E., et al. 2009, *Msngr*, 135, 40
- Kurk, J., Cimatti, A., Daddi, E., et al. 2013, *A&A*, 549, A63
- Laidler, V. G., Papovich, C., Grogin, N. A., et al. 2007, *PASP*, 119, 1325
- Law, D. R., Steidel, C. C., Shapley, A. E., et al. 2012, *ApJ*, 759, 29
- Lee, B., Giavalisco, M., Williams, C. C., et al. 2013a, *ApJ*, 774, 47

- Lee, K.-S., Dey, A., Cooper, M. C., Reddy, N., & Jannuzi, B. T. 2013b, *ApJ*, **771**, 25
- Leitherer, C., Leão, J. R. S., Heckman, T. M., et al. 2001, *ApJ*, **550**, 724
- Leitherer, C., Ortiz Otálvaro, P. A., Bresolin, F., et al. 2010, *ApJS*, **189**, 309
- Leitherer, C., Robert, C., & Drissen, L. 1992, *ApJ*, **401**, 596
- Leitherer, C., Schaerer, D., Goldader, J. D., et al. 1999, *ApJS*, **123**, 3
- López-Sánchez, Á. R., & Esteban, C. 2010, *A&A*, **516**, A104
- Maeder, A. 1991, *A&A*, **242**, 93
- Maiolino, R., Nagao, T., Grazian, A., et al. 2008, *A&A*, **488**, 463
- Malhotra, S., Rhoads, J. E., Finkelstein, S. L., et al. 2012, *ApJL*, **750**, L36
- Marchesini, D., Muzzin, A., Stefanon, M., et al. 2014, *ApJ*, **794**, 65
- Martin, C. L. 2005, *ApJ*, **621**, 227
- Martin, C. L., & Bouché, N. 2009, *ApJ*, **703**, 1394
- Martin, C. L., Shapley, A. E., Coil, A. L., et al. 2013, *ApJ*, **770**, 41
- Matsuoka, K., Nagao, T., Maiolino, R., Marconi, A., & Taniguchi, Y. 2009, *A&A*, **503**, 721
- McCarthy, P. J. 1993, *ARA&A*, **31**, 639
- Meynet, G. 1995, *A&A*, **298**, 767
- Meynet, G., & Maeder, A. 2005, *A&A*, **429**, 581
- Mokiem, M. R., de Koter, A., Vink, J. S., et al. 2007, *A&A*, **473**, 603
- Mosleh, M., Williams, R. J., Franx, M., & Kriek, M. 2011, *ApJ*, **727**, 5
- Murray, N., Ménard, B., & Thompson, T. A. 2011, *ApJ*, **735**, 66
- Muzzin, A., van Dokkum, P., Franx, M., et al. 2009, *ApJL*, **706**, L188
- Nath, B. B., & Shchekinov, Y. 2013, *ApJL*, **777**, L12
- Nelson, E., van Dokkum, P., Franx, M., et al. 2014, *Natur*, **513**, 394
- Newman, A. B., Ellis, R. S., Treu, T., & Bundy, K. 2010, *ApJL*, **717**, L103
- Newman, S. F., Genzel, R., Förster-Schreiber, N. M., et al. 2012, *ApJ*, **761**, 43
- Nonino, M., Dickinson, M., Rosati, P., et al. 2009, *ApJS*, **183**, 244
- Nugis, T., & Lamers, H. J. G. L. M. 2000, *A&A*, **360**, 227
- Onodera, M., Renzini, A., Carollo, M., et al. 2012, *ApJ*, **755**, 26
- Overzier, R. A., Heckman, T. M., Tremonti, C., et al. 2009, *ApJ*, **706**, 203
- Patel, S. G., van Dokkum, P. G., Franx, M., et al. 2013, *ApJ*, **766**, 15
- Peng, C. Y., Ho, L. C., Impey, C. D., & Rix, H.-W. 2002, *AJ*, **124**, 266
- Peng, Y.-j., Lilly, S. J., Kovač, K., et al. 2010, *ApJ*, **721**, 193
- Peng, Y.-j., Lilly, S. J., Renzini, A., & Carollo, M. 2012, *ApJ*, **757**, 4
- Pentericci, L., Grazian, A., Scarlata, C., et al. 2010, *A&A*, **514**, A64
- Pettini, M., Kellogg, M., Steidel, C. C., et al. 1998, *ApJ*, **508**, 539
- Pettini, M., Rix, S. A., Steidel, C. C., et al. 2002, *ApJ*, **569**, 742
- Poggianti, B. M., Calvi, R., Biondi, D., et al. 2013, *ApJ*, **762**, 77
- Popesso, P., Dickinson, M., Nonino, M., et al. 2009, *A&A*, **494**, 443
- Quider, A. M., Pettini, M., Shapley, A. E., & Steidel, C. C. 2009, *MNRAS*, **398**, 1263
- Quider, A. M., Shapley, A. E., Pettini, M., Steidel, C. C., & Stark, D. P. 2010, *MNRAS*, **402**, 1467
- Renzini, A. 2006, *ARA&A*, **44**, 141
- Retzlaff, J., Rosati, P., Dickinson, M., et al. 2010, *A&A*, **511**, A50
- Rix, S. A., Pettini, M., Leitherer, C., et al. 2004, *ApJ*, **615**, 98
- Rubin, K. H. R., Prochaska, J. X., Koo, D. C., et al. 2014, *ApJ*, **794**, 156
- Rubin, K. H. R., Weiner, B. J., Koo, D. C., et al. 2010, *ApJ*, **719**, 1503
- Rupke, D. S., Veilleux, S., & Sanders, D. B. 2005, *ApJS*, **160**, 115
- Rupke, D. S. N., & Veilleux, S. 2013, *ApJ*, **768**, 75
- Sales, L. V., Navarro, J. F., Theuns, T., et al. 2012, *MNRAS*, **423**, 1544
- Saracco, P., Longhetti, M., & Andreon, S. 2009, *MNRAS*, **392**, 718
- Sato, T., Martin, C. L., Noeske, K. G., Koo, D. C., & Lotz, J. M. 2009, *ApJ*, **696**, 214
- Schaerer, D., & Verhamme, A. 2008, *A&A*, **480**, 369
- Sell, P. H., Tremonti, C. A., Hickox, R. C., et al. 2014, *MNRAS*, **441**, 3417
- Shapley, A. E., Steidel, C. C., Pettini, M., & Adelberger, K. L. 2003, *ApJ*, **588**, 65
- Sharma, P., Roy, A., Nath, B. B., & Shchekinov, Y. 2014, *MNRAS*, **443**, 3463
- Shibuya, T., Ouchi, M., Nakajima, K., et al. 2014, *ApJ*, **788**, 74
- Shih, H.-Y., & Stockton, A. 2011, *ApJ*, **733**, 45
- Sommariva, V., Mannucci, F., Cresci, G., et al. 2012, *A&A*, **539**, A136
- Song, M., Finkelstein, S. L., Gebhardt, K., et al. 2014, *ApJ*, **791**, 3
- Stark, D. P., Ellis, R. S., Bunker, A., et al. 2009, *ApJ*, **697**, 1493
- Stark, D. P., Ellis, R. S., Chiu, K., Ouchi, M., & Bunker, A. 2010, *MNRAS*, **408**, 1628
- Stefanon, M., Marchesini, D., Rudnick, G. H., Brammer, G. B., & Whitaker, K. E. 2013, *ApJ*, **768**, 92
- Steidel, C. C., Bogosavljević, M., Shapley, A. E., et al. 2011, *ApJ*, **736**, 160
- Steidel, C. C., Erb, D. K., Shapley, A. E., et al. 2010, *ApJ*, **717**, 289
- Steidel, C. C., Hunt, M. P., Shapley, A. E., et al. 2002, *ApJ*, **576**, 653
- Stockton, A., Shih, H.-Y., Larson, K., & Mann, A. W. 2014, *ApJ*, **780**, 134
- Sturm, E., González-Alfonso, E., Veilleux, S., et al. 2011, *ApJL*, **733**, L16
- Swinbank, A. M., Smail, I., Chapman, S. C., et al. 2010, *MNRAS*, **405**, 234
- Szomoru, D., Franx, M., Bouwens, R. J., et al. 2011, *ApJL*, **735**, L22
- Szomoru, D., Franx, M., & van Dokkum, P. G. 2012, *ApJ*, **749**, 121
- Tacconi, L. J., Genzel, R., Neri, R., et al. 2010, *Natur*, **463**, 781
- Tacconi, L. J., Neri, R., Genzel, R., et al. 2013, *ApJ*, **768**, 74
- Tal, T., Dekel, A., Oesch, P., et al. 2014, *ApJ*, **789**, 164
- Targett, T. A., Dunlop, J. S., Cirasuolo, M., et al. 2013, *MNRAS*, **432**, 2012
- Targett, T. A., Dunlop, J. S., McLure, R. J., et al. 2011, *MNRAS*, **412**, 295
- Taylor, E. N., Franx, M., Glazebrook, K., et al. 2010, *ApJ*, **720**, 723
- Thomas, D., Maraston, C., Bender, R., & Mendes de Oliveira, C. 2005, *ApJ*, **621**, 673
- Toft, S., Franx, M., van Dokkum, P., et al. 2009, *ApJ*, **705**, 255
- Toft, S., Gallazzi, A., Zirm, A., et al. 2012, *ApJ*, **754**, 3
- Toft, S., Smolčić, V., Magnelli, B., et al. 2014, *ApJ*, **782**, 68
- Toft, S., van Dokkum, P., Franx, M., et al. 2007, *ApJ*, **671**, 285
- Tremonti, C. A., Moustakas, J., & Diamond-Stanic, A. M. 2007, *ApJL*, **663**, L77
- Trujillo, I., Cenarro, A. J., de Lorenzo-Cáceres, A., et al. 2009, *ApJL*, **692**, L118
- Trujillo, I., Ferré-Mateu, A., Balcells, M., Vazdekis, A., & Sánchez-Bláquez, P. 2014, *ApJL*, **780**, L20
- Trujillo, I., Feulner, G., Goranova, Y., et al. 2006, *MNRAS*, **373**, L36
- Trump, J. R., Hall, P. B., Reichard, T. A., et al. 2006, *ApJS*, **165**, 1
- van der Wel, A., Franx, M., van Dokkum, P. G., et al. 2014, *ApJ*, **788**, 28
- van der Wel, A., Holden, B. P., Zirm, A. W., et al. 2008, *ApJ*, **688**, 48
- van de Sande, J., Kriek, M., Franx, M., et al. 2011, *ApJL*, **736**, L9
- van de Sande, J., Kriek, M., Franx, M., et al. 2013, *ApJ*, **771**, 85
- van Dokkum, P. G., Bezanson, R., van der Wel, A., et al. 2014, *ApJ*, **791**, 45
- van Dokkum, P. G., Franx, M., Kriek, M., et al. 2008, *ApJL*, **677**, L5
- van Dokkum, P. G., Kriek, M., & Franx, M. 2009, *Natur*, **460**, 717
- van Dokkum, P. G., Whitaker, K. E., Brammer, G., et al. 2010, *ApJ*, **709**, 1018
- Vanzella, E., Cristiani, S., Dickinson, M., et al. 2005, *A&A*, **434**, 53
- Vanzella, E., Cristiani, S., Dickinson, M., et al. 2006, *A&A*, **454**, 423
- Vanzella, E., Cristiani, S., Dickinson, M., et al. 2008, *A&A*, **478**, 83
- Vanzella, E., Giavalisco, M., Dickinson, M., et al. 2009, *ApJ*, **695**, 1163
- Veilleux, S., & Osterbrock, D. E. 1987, *ApJS*, **63**, 295
- Verhamme, A., Schaerer, D., Atek, H., & Tapken, C. 2008, *A&A*, **491**, 89
- Vink, J. S., & de Koter, A. 2005, *A&A*, **442**, 587
- Wang, T., Huang, J.-S., Faber, S. M., et al. 2012, *ApJ*, **752**, 134
- Weiner, B. J., Coil, A. L., Prochaska, J. X., et al. 2009, *ApJ*, **692**, 187
- Whitaker, K. E., van Dokkum, P. G., Brammer, G., et al. 2013, *ApJL*, **770**, L39
- Williams, C. C., Giavalisco, M., Cassata, P., et al. 2014, *ApJ*, **780**, 1
- Woo, J., Dekel, A., Faber, S. M., et al. 2013, *MNRAS*, **428**, 3306
- Wuyts, S., Cox, T. J., Hayward, C. C., et al. 2010, *ApJ*, **722**, 1666
- Wuyts, S., Förster Schreiber, N. M., van der Wel, A., et al. 2011, *ApJ*, **742**, 96
- Zirm, A. W., van der Wel, A., Franx, M., et al. 2007, *ApJ*, **656**, 66