



Publication Year	2015
Acceptance in OA	2020-03-13T16:54:55Z
Title	Automated physical classification in the SDSS DR10. A catalogue of candidate quasars
Authors	BRESCIA, Massimo, Cavuoti, S., Longo, G.
Publisher's version (DOI)	10.1093/mnras/stv854
Handle	http://hdl.handle.net/20.500.12386/23219
Journal	MONTHLY NOTICES OF THE ROYAL ASTRONOMICAL SOCIETY
Volume	450

Automated physical classification in the SDSS DR10. A catalogue of candidate quasars

M. Brescia,^{1★} S. Cavioti¹ and G. Longo²

¹*Astronomical Observatory of Capodimonte-INAf, Via Moiarriello 16, I-80131 Napoli, Italy*

²*Department of Physics, University Federico II, Via Cinthia 6, I-80126 Napoli, Italy*

Accepted 2015 April 13. Received 2015 April 7; in original form 2014 November 20

ABSTRACT

We discuss whether modern machine learning methods can be used to characterize the physical nature of the large number of objects sampled by the modern multiband digital surveys. In particular, we applied the MLPQNA (Multi Layer Perceptron with Quasi Newton Algorithm) method to the optical data of the Sloan Digital Sky Survey (SDSS) Data Release 10, investigating whether photometric data alone suffice to disentangle different classes of objects as they are defined in the SDSS spectroscopic classification. We discuss three groups of classification problems: (i) the simultaneous classification of galaxies, quasars and stars; (ii) the separation of stars from quasars; (iii) the separation of galaxies with normal spectral energy distribution from those with peculiar spectra, such as starburst or star-forming galaxies and AGN. While confirming the difficulty of disentangling AGN from normal galaxies on a photometric basis only, MLPQNA proved to be quite effective in the three-class separation. In disentangling quasars from stars and galaxies, our method achieved an overall efficiency of 91.31 per cent and a QSO class purity of ~ 95 per cent. The resulting catalogue of candidate quasars/AGNs consists of ~ 3.6 million objects, of which about half a million are also flagged as robust candidates, and will be made available on CDS VizieR facility.

Key words: methods: data analysis – techniques: photometric – catalogues – galaxies: active – quasars: general.

1 INTRODUCTION

Broad-band photometry from wide-field imagers mounted on dedicated telescopes and instruments has been and will continue to be our main source of information for a large fraction of the extragalactic universe. Spectroscopy provides a more detailed and deeper understanding of the physical properties of individual objects than photometry. However, spectroscopy will never be able to fully sample the populations of galactic or extragalactic objects in either number or depth. It is therefore of great interest to determine whether it is possible to extract estimates of physical parameters, such as distance, metallicity, star formation rate, morphology and the presence or absence of an active nucleus, from the coarse information provided by photometry.

For a given object, photometric quantities, such as magnitudes in different bands, momenta of the light distribution and morphological indexes, define its position in a high dimensional parameter space which we shall call the observed parameter space (or OPS; cf. Djorgovski et al. 2012). The de-projection of the OPS into the physical parameter space (PPS, i.e. the parameter space defined by

the physical quantities), is however a complex operation, made in some cases almost impossible by the degeneracy existing in both the data and the physical parameters themselves. Most of the time, such de-projections require an intermediate passage, i.e. the de-projection of the OPS on to the spectroscopic parameter space (or SPS), i.e. the space defined by observable spectroscopic quantities such as redshift, equivalent widths of specific spectral lines and spectroscopic indexes. The parameters defining the SPS are in fact more directly related to the intrinsic physical properties of the objects. Spectroscopy, for instance, is more effective than photometry in disentangling normal galaxies from those hosting an AGN, or in classifying different types of AGN in broad classes (e.g. Seyfert, LINERS, etc.). Actually, the definition of nearly all AGN classes is based on spectroscopic criteria through the equivalent widths of some lines (see for instance Kewley et al. 2001; Lamareille 2010).

The problem of mapping the OPS on to some subspaces of the SPS and then on the PPS, is frequently encountered in the literature. Examples include the determination of photometric redshifts, which is an attempt to reproduce what is decidedly a spectroscopic quantity (the redshift) using photometry alone; the search for candidate quasars and blazars using photometric diagnostics; or the search for candidate AGN and starburst galaxies.

* E-mail: brescia@na.astro.it

Usually, these mapping functions are quite complex and difficult (if not plainly impossible) to be derived in simple analytical forms and require statistical or empirical approaches that are common in the field of machine learning (hereinafter ML). In fact, if higher accuracy information is available for a subset of objects (in the case discussed here, spectroscopic parameters or flags in the SPS), it can be used to teach an ML method how to map the available data (the photometric data in the OPS) into the higher accuracy ones. In the ML field, this approach is usually called supervised learning. We emphasize that, while supervised learning is very powerful in uncovering the hidden relationship between input parameters and the so-called knowledge base (hereafter KB), there are two main limitations:

- (i) the mapping function cannot be extrapolated outside of the region of the OPS that is properly sampled by the SPS;
- (ii) any bias present in the KB is necessarily reproduced (if not amplified) in the output.

To better exemplify these two points, let us focus on the main topic addressed in this work where we use a specific ML method, the MLPQNA (Multi Layer Perceptron with Quasi Newton Algorithm; Brescia et al. 2013; Cavuoti et al. 2014b), to tackle a particular incarnation of the so-called *physical classification of galaxies* problem. We will specifically address the possibility of disentangling normal, non-active galaxies from those hosting an AGN using only photometric measurements.

In a previous paper, we have discussed the use of the same method to classify different types of AGN (Cavuoti et al. 2014b). In this work, we shall instead focus on the question of whether it is possible to use only optical colours to produce reliable (or at least statistically well controlled) AGN candidates and to disentangle normal-inactive galaxies from those hosting an AGN.

As already pointed out in Cavuoti et al. (2014b), in spite of the unique physical mechanism responsible for the nuclear activity (Antonucci 1993; Urry & Padovani 1995), the phenomenological complexity of AGNs is so high that there cannot be a unique method equally effective in identifying all AGN phenomenologies in every redshift range (cf. Messias et al. 2010). Moreover, AGN and starbursts, long studied separately, are now thought to be correlated (Schweitzer et al. 2006; Pilbratt et al. 2010) and difficult to disentangle without using mid-IR data.

Furthermore, we also investigate the possibility of identifying a catalogue of candidate QSOs, by comparing the efficiency of classification in terms of a compromise between purity and completeness following two different strategies: (i) by exploiting a self-consistent strategy starting from three different classes of objects (for instance galaxies, stars and QSOs); (ii) by assuming a pre-determined separation between resolved and unresolved objects (star/galaxy), we performed the usual two-class classification between stars and QSOs.

The paper is structured as follows. In Section 2, we discuss in same detail the data. In Section 3, we summarize the general methodology adopted and provide a short description of the ML method used. In Section 4, we describe in some detail the various classification experiments performed and, finally, in Section 5 we discuss the results.

2 THE DATA

Among the countless merits of the Sloan Digital Sky Survey (SDSS; York et al. 2000; Stoughton et al. 2002), there is also the fact that it has paved the way to the experimenting and wide adoption within the astronomical community of innovative methods based on ML

(or on statistical pattern recognition), thus fostering the birth of the emerging field of Astroinformatics (Borne 2010).

The SDSS in fact provides an ideal test ground for ML algorithms and methods: a large and complex photometric data base with hundreds of features measured for hundreds of millions of objects (defining the SDSS subregion of the OPS), complemented by spectroscopic information for a significant subsample (roughly ~ 1 per cent) of objects (i.e. the SPS). Furthermore, it offered to different groups, working with different methodologies, the possibility to address significant problems, thus allowing a robust and fair assessment of the performance of any new method.

Even constraining ourselves to the specific interest of the present work, it would be difficult to summarize the applications of ML methods to SDSS data and we shall just mention two. The search for candidate quasars has been widely discussed in Richards et al. (2004), Richards et al. (2009), D’Abrusco et al. (2009) and Abraham et al. (2012). While the characterization of AGN has been discussed in Cavuoti et al. (2014b). Last but not least, ML methods have been crucial for the first successful astronomical citizen science project: the galaxy Zoo (Lintott et al. 2008), where empirical methods were used to compare and evaluate the performance of a large number of human simple, repetitive, and independent classification tasks.

In this paper, we use photometric and spectroscopic data extracted from the SDSS Data Release 10 (DR10; Ahn et al. 2014; Eisenstein et al. 2011). The DR10 photometry covers $14\,555\text{ deg}^2$ of the celestial sphere for a total of more than 469 millions unique (i.e. without duplicates, overlaps and repeated measurements) objects, but not necessarily unique *astrophysical* objects. DR10 also includes spectroscopic information for more than 3 million objects. These data come from a wide range of concurrent experiments: the seven initial SDSS data releases, the Sloan Extension for Galactic Understanding and Exploration (Yanny et al. 2009), the Apache Point Observatory Galaxy Evolution Experiment (Majewski et al. 2014) mainly targeted to Milky Way stars; the Barion Oscillation Spectroscopic Survey (Dawson et al. 2013) and, finally, the Multi Object APO Radial Velocity Exoplanet Large-Area Survey (Ge et al. 2008).

In order to build our KB, we used the spectroscopic classification flags provided by the SDSS DR10. It includes also a spectroscopic classification (parameters *CLASS* and *SUBCLASS*) obtained by the SDSS team through the comparison of individual spectra with templates and from equivalent width ratios. This classification is articulated in three main classes: *GALAXY*, *QSO* and *STAR* as follows:

GALAXY. Objects having a galaxy template. Its subclasses are:

- (i) *STARFORMING*: based on whether the galaxy has detectable emission lines that are consistent with star formation according to the criteria:

$$\log_{10}(O_{III}/H\beta) < 0.7 - 1.2(\log_{10}(N_{II}/H\alpha) + 0.4).$$

- (ii) *STARBURST*: set if the galaxy is star forming but has an equivalent width of $H\alpha$ greater than 50 \AA .

- (iii) *AGN*: based on whether the galaxy has detectable emission lines that are consistent with being a Seyfert or LINER according to the relation:

$$\log_{10}(O_{III}/H\beta) > 0.7 - 1.2(\log_{10}(N_{II}/H\alpha) + 0.4).$$

QSO. Objects identified with a QSO template. Based on the SDSS definition, if a galaxy or quasar has spectral lines detected at the 10σ level with $\sigma > 200\text{ km s}^{-1}$ at the 5σ level, the indication *BROADLINE* is appended to their subclass.

Table 1. Partition of the SDSS-DR10 spectroscopic objects into spectroscopic classes and subclasses. Column 1: gives the broad spectral type; column 2: spectral subtype; column 3: number of objects belonging to that specific subclass; column 4: total number of objects in a given class.

Class	Subclass	Nr. of obj.	Total nr.
GALAXY	AGN	22 589	
	BROADLINE	18 629	
	STARBURST	73 166	
	STARFORMING	265 704	385 298
	AGN BROADLINE	3505	
	STARBURST BROADLINE	166	
	STARFORMING BROADLINE	1539	
	NORMAL		1 526 215
	Subtotal		1 911 513
QSO	AGN	970	
	BROADLINE	257 572	
	AGN BROADLINE	2954	
	STARBURST BROADLINE	9127	271 603
	STARFORMING BROADLINE	552	
	STARBURST	315	
	STARFORMING	113	
	NORMAL		97 695
	Subtotal		369 298
STAR			798 340

Table 2. Description of the parameters (features and targets) used in this work. The first part of the table lists the photometric parameters in the OPS, the second one the spectroscopic data and targets. Column 1: collective name of a given set of parameter; column 2: the corresponding SDSS parameters.

Type	Parameters
Identification	objID, specObjID
Coordinates	RA, Dec.
psfMag	<i>ugriz</i> magnitudes and related errors <i>mag_err</i>
fiberMag	<i>ugriz</i> magnitudes and related errors <i>mag_err</i>
modelMag	<i>ugriz</i> magnitudes and related errors <i>mag_err</i>
emodelMag	<i>ugriz</i> magnitudes and related errors <i>mag_err</i>
deredMag	<i>ugriz</i> magnitudes
Extinction	<i>ugriz</i> extinction values
Spectroscopic redshift	<i>z</i> , <i>zWarning</i>
Classification	Type, class, subclass, flags

STAR. Objects matching a stellar template (among 26 spectral subclasses). Since we were not interested in these subclasses, they will be ignored in what follows.

The total number of spectroscopic objects is 3 079 151 divided in different types as summarized in Table 1. We assumed all galaxies not flagged otherwise to be normal, i.e. neither AGN or starburst.

It is worth noting that sharp cuts based on crisp thresholds introduce ambiguities in the mapping of the SPS on to the PPS. To be more clear: a large fraction of the objects with spectroscopic features near the threshold values may be misclassified (i.e. a galaxy hosting an AGN may be erroneously put in the normal galaxy bins due spectroscopic errors and vice versa). These ambiguities are intrinsic to the KB and will affect the projection of the OPS on to the SPS and therefore the PPS.

For all spectroscopic objects, we downloaded the sets of magnitudes listed in the upper part of Table 2. The choice of using different sets of magnitudes was dictated by the fact that, since we were interested also in finding AGN candidates, different apertures

can be used to weight in different ways the contribution of the central unresolved source and of the extended surrounding galaxy.

We performed a preliminary photometric filtering at the query time, by using the *primary* mode and by taking into account the DR10 prescriptions encapsulated by the flags *calibStatus* and *clean*. Besides these flags, any use of the produced candidate QSOs should be carefully investigated in terms of their photometric reliability (Palanque-Delabrouille et al. 2013).

Finally, the catalogue had to be cleaned for an handful of objects which appear to be duplicated in the main SDSS-DR10 archive.

3 THE METHOD

Supervised ML methods used for classification tasks require an extensive KB formed by objects for which the outcome of the classification (i.e. the target) is a priori known. The methods learn from these examples the unknown and often complex rule linking the input data (in this case the photometric parameters) to the target (in this case a physical class known from the KB). Since these methods cannot be used for extrapolating knowledge outside the KB ranges, it is crucial to keep in mind that the regions of the OPS adequately sampled by the KB define also the domain of applicability of the method.

The KB is usually split in three different subsets to be used for training, validation and test, respectively. The training set is used by the method to learn the mapping function, the validation set is mainly used to avoid the so-called *overfitting*, i.e. the loss of generalization capabilities, and a blind test set is used to evaluate the performance of the method, by exposing the trained network to objects in the KB which have never been seen before by the network itself.

Evaluation of the results with the a priori known values of the objects in the blind test set allows evaluation of a series of statistical indicators and parametrization of the performance of the method itself.

An alternative approach, which is also the one used in this work, is the so-called *leave-one-out k-fold cross-validation* that can be implicitly performed during training (Geisser 1975). The automatized process of the cross-validation consists of performing *k* different training runs with the following procedure: (i) random splitting of the training set into *k* random subsets, each one composed by the same percentage of the data set (depending on the *k* choice); (ii) at each run the remaining part of the data set is used for training and the excluded fraction for validation. While avoiding overfitting, the *k*-fold cross-validation leads to an increase of the execution time of $\sim k - 1$ times the total number of runs.

In all experiments listed in the following section, we used the MLPQNA method and a five-fold cross-validation.

3.1 The model MLPQNA

DAMEWARE (DATA Mining & Exploration Web Application Resource; Brescia et al. 2014) is an infrastructure which offers to anyone the possibility of engaging in complex data mining tasks by means of a web-based approach to a variety of data mining methods. Among the methods available, for the present work we used a Multi Layer Perceptron (MLP; Rosenblatt 1961) neural network which is among the most used feed-forward neural networks in a large variety of scientific and social contexts. MLPs may differ widely in both architecture and learning rules. In this work, we used the MLPQNA model, i.e. an MLP implementation (Fig. 1) where the learning rule is based on the Quasi Newton Algorithm (QNA).

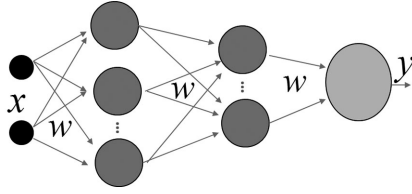


Figure 1. The typical topology of a feed-forward neural network, in this case representing the architecture of MLPQNA. In the example, there are two hidden layers between the input (X) and output (Y) layers, corresponding to the architecture mostly used in the case of complex problems.

The QNA relies on Newton’s method to find the stationary (i.e. the zero gradient) point of a function and the QNA algorithm is an optimization of the basic Newton learning rule based on a statistical approximation of the Hessian of the training error obtained through a cyclic gradient calculation. MLPQNA makes use of the well known L-BFGS algorithm (Limited memory-Broyden Fletcher Goldfarb Shanno; Byrd, Nocedal & Schnabel 1994), which was originally designed for problems with a very large number of features (hundreds to thousands).

The MLPQNA method has been extensively discussed elsewhere in the contexts of both classification (Brescia et al. 2012) and regression (Brescia et al. 2013; Cavuoti et al. 2015, 2012; Cavuoti, Brescia & Longo 2014a); a first attempt to use MLPQNA for a similar problem, namely the classification of emission-line galaxies, was presented in Cavuoti et al. (2014b).

4 EXPERIMENTS

We now describe the main classification experiments which were performed. Since the general astronomer may not be familiar with the ML methodology and could be confused in dealing with the following sections, we wish to emphasize a few points.

Most of ML methods are not deterministic and there is no clear-cut rule to optimize the parameters of the models. This is particularly true in the astronomical case, due to classification degeneracy in some parts of the OPS. Thus, it is often not possible to establish a priori which combination of input parameters is optimal for a given task. This implies that, in order to find the optimal method, many experiments with different settings need to be run and evaluated. A full understanding of the performance of a specific experiment can be achieved only through the comparison of the outcomes of a large number of experiments, each run with different settings.

Our experiments can be divided into three main families:

- (i) two-class experiments for disentangling normal galaxies from other types (normal – AGN/QSO).
- (ii) two-class experiment to disentangle quasars from stars (QSO–STAR);
- (iii) three-class experiments (STAR–GALAXY–QSO).

Before entering into a detailed description of these three groups of experiments, it is useful to list the criteria which were adopted in order to reduce the number of experiments.

Input features and targets. As input features we used the 5 *psfMag* and the 5 *modelMag* magnitudes provided by the SDSS in the u, g, r, i, z photometric system. As target vectors, we used the spectroscopic taxonomy provided by SDSS and discussed in Section 2. Following a similar approach but using a different ML method, Abraham et al. (2012) found that better performance can be obtained by using 10 colours, obtained from all possible combinations of the SDSS *psfMag* magnitudes, plus the *uband* PSF magnitude. Although the

Table 3. Confusion matrix for a two-class experiment. N_{AA} is the number of objects in the class A correctly classified; N_{AB} number of objects belonging to class A erroneously classified in class B; N_{BA} : number of objects belonging to class B erroneously classified as belonging to class A; N_{BB} : number of objects in class B which were correctly classified.

		Output	
		Class A	Class B
Target	Class A	N_{AA}	N_{AB}
	Class B	N_{BA}	N_{BB}

information in 10 colours is in principle degenerate (i.e. could be described with just 5 mag), in order to perform a direct comparison with Abraham et al. (2012), from the *psfMag* we derived 10 colours. Furthermore, we also performed a few experiments on a subregion of the OPS defined by a cut in the i magnitude which was forced to fall in the range [14, 24], plus the following cuts in colours:

- (i) $-0.25 \leq u - g \leq +1.00$;
- (ii) $-0.25 \leq g - r \leq +0.75$;
- (iii) $+0.30 \leq r - i \leq +0.50$;
- (iv) $-0.30 \leq i - z \leq +0.50$.

The performance of the experiments were evaluated as percentages of the standard statistical indicators: *overall efficiency*, *completeness*, *purity* and *contamination*. With reference to the confusion matrix in Table 3:

(i) *Overall efficiency* e_{tot} : defined as the ratio between the number of correctly classified objects and the total number of objects in the data sets. With reference to Table 3

$$e_{tot} \equiv \frac{N_{AA} + N_{BB}}{N_{AA} + N_{AB} + N_{BA} + N_{BB}}. \quad (1)$$

(ii) *Completeness* C_i : defined as the ratio between the number of correctly classified objects in a class and the total number of objects of the same class present in the data set. Always with reference to class A:

$$C_A \equiv \frac{N_{AA}}{N_{AA} + N_{AB}}. \quad (2)$$

(iii) *Purity* P_i : defined as the ratio between the number of correctly classified objects in a class and the total number of objects classified in that class. For instance, for class A:

$$P_A \equiv \frac{N_{AA}}{N_{AA} + N_{BA}}. \quad (3)$$

(iv) *Contamination* Co_i : defined as the dual of purity, namely as the ratio between the misclassified objects in a given class and the number of objects classified in that class. With reference to class A:

$$Co_A \equiv 1 - P_A = \frac{N_{BA}}{N_{AA} + N_{BA}}. \quad (4)$$

Finally, all experiments were performed using a two-layer MLPQNA model, i.e. a complex feed-forward architecture including two hidden layers of neurons, besides the input and output layers (Fig. 1).

4.1 Two-class experiment: normal galaxies versus others

As mentioned before, a first set of experiments was performed on the *galaxy* subset of the SDSS-DR10 catalogue. The main goal

Table 4. Characteristics of the KBs used to perform the normal galaxies versus others experiments (from Section 4.1).

KB	Step	Normal	Others	Total
ALL	Training	77 692	76 970	154 662
	Test	311 236	308 323	619 559
CUTS	Training	77 004	75 915	152 919
	Test	308 512	304 488	613 300

of these experiments was to evaluate whether optical photometry could be used to distinguish between normal galaxies and galaxies with a *peculiar* spectrum. This is particularly important for the new surveys, which are expected to expand the amount of known AGNs, by probing them rather than QSOs only.

We therefore built a KB, based on the 10 mag (*psfMag* and *modelMag*) available in all SDSS bands, using the objects listed in the upper side of Table 1, with also an additional flag, set to 0 for the normal galaxies and 1 for all other types.

With reference to Table 1, we see that in the whole KB there are 1 911 513 objects among which 1 526 215 normal galaxies and 385 298 objects belonging to the other classes. In order to equally weight the two groups, we randomly extracted ~ 25 per cent of the galaxies obtaining a smaller data set. We also cleaned the KB by removing Not-a-Number entries. The resulting data set (hereafter named *ALL*) contained 619 559 objects among which 311 236 were flagged as normal galaxies. Furthermore, in order to exclude objects falling in the poorly populated parts of the OPS, we also created a second data set by applying some cuts in magnitudes, i.e. by removing the very low significant tails of the magnitude distributions, consisting of ~ 1 per cent of the original data. This second KB will be referred to as *CUTS* in what follows. The properties of the two different KBs and the way they were split into training and test set, are listed in Table 4.

The main results of the classification with the MLPQNA model are summarized in Table 5, while in Tables 6 and 7 are listed, respectively, the misclassified objects for the *ALL* and for the *CUTS* experiments, divided according to the SDSS spectroscopic subclasses.

Table 5. Summary of the performance on the blind test sets for the MLPQNA experiments on the *ALL* and *CUTS* KBs. The values are calculated with equations (1)–(3).

Experiment	Per cent e_{tot}	Per cent C_{normal}	Per cent P_{normal}	Per cent C_{others}	Per cent P_{others}
ALL	89.50	90.20	89.03	88.79	89.97
CUTS	89.59	90.44	89.05	88.73	90.15

Table 6. Summary of misclassified objects in the *ALL* experiment. Column 1: SDSS spectroscopic class; column 2: SDSS spectroscopic subclass; columns 3 and 4: number of objects in the subclass and in the class; column 5: fraction of misclassified objects.

Class	Subclass	N. objects subclass	N. objects class	Misclassified per cent
NORMAL			311 236	10
	AGN	18 119		41
	BROADLINE	14 936		67
	STARBURST	58 371		2
OTHERS	STARFORMING	212 748	308 323	7
	AGN BROADLINE	2798		47
	STARBURST BROAD	133		14
	STARFORMING BROAD	1218		30

The first thing to be noted from the results of Table 5 is that the performance of the MLPQNA on the two different data sets differ only by a negligible amount, although with a slightly better behaviour in the *CUTS*. Nonetheless we considered the *ALL* experiment as the best one, because it does not require any restriction on the OPS. This induced us to exclude any cut in further experiments.

Looking at Tables 6 and 7, which summarize the results of these experiments, one notices that all objects labelled as *broad-line* are poorly classified (with contamination ranging from 69 to 30 per cent). This fact induced us to check whether a different partition of the spectroscopic subclasses could lead to some improvements in the performance.

We therefore performed two additional experiments on the *ALL* data set. In the first case by grouping the objects in two broad classes: NORMAL galaxies plus BROADLINE types versus others (hereafter *NOnly* experiment); in the second case by grouping together all the BROADLINE types versus others (hereafter *NBall* experiment).

Finally, always in order to minimize the number of misclassified objects, an additional *two-class* classification experiment was performed by splitting the data set in two classes: one containing NORMAL, BROADLINE, AGN and AGN BROADLINE, and the other including all remaining types (hereafter experiment *NBA*).

The results for the three experiments are summarized in Table 11, while the percentage of misclassified objects in the three cases are reported, respectively, in Table 8 for *NOnly*, Table 9 for *NBall* and Table 10 for *NBA*.

4.2 Two-class experiment: QSO versus Star

The identification of quasar candidates on photometric grounds is a topic of the highest relevance. In order to evaluate the best possible combination of input features and model architecture, we run several experiments but, given the large computational load, it was not advisable to run the experiments on the whole KB and therefore, for these exploratory experiments, we used a reduced KB randomly

Table 7. Summary of misclassified objects in the *CUTS* experiment. Columns as in Table 6.

Class	Subclass	N. objects subclass	N. objects class	Misclassified per cent
NORMAL			308 512	10
	AGN	17 971		41
	BROADLINE	14 356		69
	STARBURST	56 922		2
OTHERS	STARFORMING	211 238	304 488	7
	AGN BROADLINE	2688		48
	STARBURST BROAD	132		15
	STARFORMING BROAD	1181		31

Table 8. Summary of misclassified objects in the *NBonly* experiment. Columns as in Table 6.

Class	Subclass	N. objects subclass	N. objects class	Misclassified per cent
NORMAL	NORMAL	278 213	292 850	9
+ BROADLINE	BROADLINE	14 637		9
OTHERS	AGN	17 750	285 104	46
	STARBURST	56 443		2
	STARFORMING	206 853		7
	AGN BROADLINE	2715		67
	STARBURST BROAD	133		17
	STARFORMING BROAD	1210		41

Table 9. Summary of misclassified objects in the *NBall* experiment. Columns as in Table 6.

Class	Subclass	N. objects subclass	N. objects class	Misclassified per cent
	NORMAL	277 977		9
NORMAL	BROADLINE	14 626		7
+ ALL	AGN BROADLINE	2764	296 691	31
BROADLINE	STARBURST BROAD	127		84
	STARFORMING BROAD	1197		51
	AGN	17 633		48
OTHERS	STARBURST	56 484	280 657	2
	STARFORMING	206 540		7

Table 10. Summary of misclassified objects in the *NBA* experiment. Columns as in Table 6.

Class	Subclass	N. objects subclass	N. objects class	Misclassified per cent
NORMAL	NORMAL	236 847	272 700	8
+ BROADLINE	BROADLINE	14 356		5
+ AGN	AGN	18 119		43
+ AGN BROAD	AGN BROADLINE	2798		23
OTHERS	STARBURST	58 371	272 470	2
	STARFORMING	212 748		9
	STARBURST BROAD	133		9
	STARFORMING BROAD	1218		54

extracted from the original one. Furthermore, in terms of taxonomy of all the combinations among magnitudes and colours, we were also interested in evaluating performance in comparison with the experiment types described in Abraham et al. (2012). Hence, only colours have been used. The performed experiments were indeed composed by the following cases:

(a) two experiments with four colours and 1 mag, respectively, u and r (hereinafter named as, respectively, 2a-u and 2a-r);

(b) as with 2a, but with all same cuts in magnitudes and colours as in Abraham et al. (2012, hereinafter named as, respectively, 2b-u and 2b-r);

(c) as with 2a, but with only a cut in the *i* magnitude, by taking into account what was done by Abraham et al. (2012, hereinafter named as, respectively, 2c-u and 2c-r);

(d) as with 2a, but using 10 colours, obtained by combinations of *psfMag* magnitudes (hereinafter named as, respectively, 2d-u and 2d-r);

Table 11. Summary of the statistical performance on the two-class experiments named as *NBonly*, *NBall* and *NBA*. The columns 2 and 5 are calculated with equations (1)–(3)

Experiment	Per cent e_{tot}	Class	Per cent completeness	Per cent purity
<i>NBonly</i>	91.03	NORMAL+BROADLINE	91.25	91.06
		OTHERS	90.80	90.99
<i>NBall</i>	91.11	NORMAL+ALL BROADLINE	91.07	91.57
		OTHERS	91.14	90.62
<i>NBA</i>	91.17	NORMAL+BROADLINE+ALL AGN	89.88	92.27
		OTHERS	92.46	90.13

Table 12. Summary of the results of the two-class experiments (from Section 4.2), where the best is indicated with the asterisk (referenced in the text as 2d-r) referred to the parameter space composed by the 10 colours without any cut for each object. The training and test sets are, respectively, 10 and 90 per cent of the given data set. The last five columns are referred to equations (1)–(3). All the quantities reported in the table are percentages.

EXP ID	Per cent e_{tot}	Star per cent C_S	Star per cent P_S	QSO per cent C_Q	QSO per cent P_Q
2a-u	91.24	87.76	95.23	95.11	87.48
2a-r	91.30	87.92	95.18	95.05	87.63
2b-u	88.06	78.71	98.72	98.04	81.19
2b-r	88.13	79.73	98.92	98.21	81.96
2c-u	91.22	87.20	95.68	95.56	87.13
2c-r	91.15	86.25	96.47	96.53	86.47
2d-u	91.34	88.09	95.06	94.93	87.81
2d-r*	91.42	88.08	95.23	95.11	87.82
2e-u	89.15	80.52	98.39	98.56	82.28
2e-r	89.05	80.10	98.61	98.77	82.05
2f-u	91.42	88.49	95.23	94.83	87.61
2f-r	91.43	88.67	95.16	94.68	87.63

Table 13. Summary of the results of the three-class experiments (from Section 4.3). The best one is with the asterisk (referenced in the text as 3a), referred to the parameter space composed by the 10 mag (*psfMag* and *magModel*) for each object. The training and test sets are, respectively, 12 and 88 per cent of the given data set. The columns are referred to equations (1)–(3). All the quantities reported in the table are percentages.

EXP ID	Per cent e_{tot}	Galaxy per cent C_G	Galaxy per cent P_G	QSO per cent C_Q	QSO per cent P_Q	Star per cent C_S	Star per cent P_S
3a*	91.31	97.02	93.49	90.49	86.90	86.40	93.82
3b	91.02	96.96	93.49	88.95	86.84	87.19	92.89
3c-u	87.83	92.69	88.00	88.27	85.56	82.57	90.21
3c-r	87.77	92.64	88.03	88.42	85.60	82.27	89.93
3d-psf	86.62	90.73	86.58	87.94	83.28	81.23	90.65
3d-model	87.64	93.60	87.32	88.13	85.76	81.23	90.17

(e) as with 2b, extended to 10 colours (hereinafter named as, respectively, 2e-u and 2e-r);

(f) as with 2c, extended to 10 colours (hereinafter named as, respectively, 2f-u and 2f-r).

The results of the experiment are reported in Table 12. In statistical terms, the experiments with the *i* cut resulted comparable to those without any cut. Hence, we considered the latter group as the best. These results will be further discussed in Section 5.

4.3 Three-class experiments

This set of experiments aimed at reproducing on photometric grounds the SDSS spectroscopic classification in the three main classes (STAR, GALAXY, QSO). We therefore performed our three-class experiments using:

(a) 10 mag (hereinafter named as 3a), composed by the five *magModel* plus the five *psfMag*, without any photometric cut, in order to properly weight the contribution from the nuclear regions;

(b) 10 mag composed by the five *magModel* and the five *psfMag* with a cut in the *i* magnitude (hereinafter named as 3b);

(c) 10 colours from *psfMag* type and a *magModel* magnitude, respectively, *u* and *r* (hereinafter named as, respectively, 3c-u and 3c-r);

(d) 5 mag, alternately from *psfMag* and *magModel* (hereinafter named, respectively, as 3d-psf and 3d-model), in order to evaluate the single contribution of the two types.

In all cases the training set was randomly extracted by balancing the number of examples presented to the network for each class, while the given data set has been always randomly split into a training and a blind test sets, by using percentages of, respectively, 12 and 88 per cent.

The results of the three-class experiments are reported in Table 13. By looking at the QSO statistics, the purity/completeness results of 3a experiment appeared very similar to those obtained in the 3b experiment. Although these two experiments led to comparable

results, we consider the 3a as the best, because obtained without any cut in the parameters. For a complete discussion see Section 5.3.

5 DISCUSSION

The classification experiments described in the previous sections aimed at producing a reliable catalogue of candidate QSOs/AGNs by exploiting the photometric information available within the DR10. In what follows we give a detailed overview of their results.

5.1 Galaxy versus others

The set of experiments described in Section 4.1 aimed at investigating whether optical photometry could be used to isolate different types of galaxies as defined by the spectroscopic subclasses in the SDSS-DR10 spectroscopic archive. With reference to Table 1 it is apparent that different types of objects are represented in the KB in a very uneven way. In the first couple of experiments (*ALL* and *CUTS*), we tried to separate normal galaxies from those having a *peculiar* spectrum (i.e. all the other subclasses in the SDSS classification scheme). The performance of the method, shown in Table 5, was not affected by the application of colour and magnitude cuts and the efficiency remained stationary around a value of ~ 90 per cent. Given the lack of improvements between the *ALL* and *CUTS* experiments, we decided to perform supplementary experiments by freezing the *ALL* KB, the same configuration for the network and the input parameters.

The statistics of misclassified objects, reported in Tables 6 and 7, show that the MLPQNA is quite effective in disentangling starburst and star-forming galaxies both narrow and broadline (misclassification rates of 2 and 7 per cent, respectively), and much less effective in identifying other types of objects such as, for instance, AGN (misclassification rate 41 per cent) and AGN broadline objects (~ 47 per cent). The performance of the starburst broadline and star-forming broadline types, however, is difficult to evaluate, since these two groups are very poorly represented in the KB and therefore the network may have failed in capture their specific signatures in the OPS.

The fact that 41 per cent of the AGN, 67 per cent of the broadline and 47 per cent of the AGN broadline were misclassified induced us to check whether different groupings of the subclasses could lead to improvements in the classification efficiency.

In the *NBonly* experiment (Table 8), the misclassification rate improved to 9 per cent for the normal galaxies and dropped to 9 per cent (from 67 per cent) for the broadline. The misclassification rates for AGN broadline, starburst broadline and star-forming broadline increased, confirming the fact that the network is not capable to disentangle these spectroscopic subclasses in an effective way. In the *NBall* experiment (Table 9), the results did not change in a significant way. In fact, the normal, starburst and star-forming-type objects still maintain a misclassification rate of, respectively, 9, 2 and 7 per cent. While for the broadline galaxies the misclassification decreases to 7 per cent. A slightly better result is obtained for the AGN broadline type, going from 47 in *ALL* and 67 in *NBonly*, to 31 per cent. The AGN and star-forming broadline types are even worse reaching a misclassification of, respectively, 48 and 51 per cent. Finally, the starburst broadline, although sparsely represented in the data set, resulted almost completely misclassified (84 per cent).

The last experiment (*NBA*), resulted as the best one in terms of overall efficiency as well as for classes normal, broadline, AGN

broadline and starburst broadline, where the misclassification rates decreased to, respectively, 8, 5, 23 and 9 per cent. Only starburst type rate remains unchanged (2 per cent), while AGN objects perform slightly worse (43 versus 41 per cent obtained in the *ALL* case). On the other hand, the classification of star-forming and star-forming broadline type decreases to, respectively, 9 and 54 per cent, although the star-forming rate decreases by 2 per cent only. The strong decrease for the star-forming broadline type could be due to its poor presence within the data set.

5.2 QSO versus Stars

Already in the earliest SDSS works (Stoughton et al. 2002; Richards et al. 2002) optical colours were used to disentangle stars from quasars in the SDSS colour space. D’Abrusco et al. (2009) used an unsupervised clustering algorithm followed by an agglomeration phase to identify candidate QSOs in a parameter space based only on photometric colours.

Sinha et al. (2007) and Abraham et al. (2012) used a Difference Boosting Neural Network on SDSS optical colours only, achieving excellent performance (~ 98 per cent) in disentangling QSO from normal galaxies in the unresolved source catalogues (thus including stars, quasars and unresolved galaxies). They however applied a cut in colours by isolating the region of this space where most (84 per cent) of the spectroscopically confirmed quasars lay. This choice, however, penalizes the recognition of peculiar objects that are likely to lay outside of the main distribution of normal *well-behaved* objects.

Our experiments are described in Section 4.2 and related results are shown in Table 12. The immediate conclusion which can be drawn by analysing the results is that our method is able to achieve ~ 95 per cent of completeness and a purity of ~ 88 per cent without having to apply any colour cuts.

5.3 Star–Galaxy–QSO

In the three-class classification experiment, the KB included all objects in the spectroscopic catalogue regardless their extended or unresolved nature.

The first thing to notice is that all experiments reported in Table 13 have performance, which differ only by very little amount. The experiment which led to the best results was the 3a with an overall efficiency of ~ 91 per cent. This experiment was performed using a two-layer MLPQNA and a quite small training set (only 12 per cent of the available KB) using as input parameters the 10 SDSS magnitudes. Having identified the experiment 3a as the best one, two additional experiments were performed on the 3a parameter space, by changing either the topology of the neural network or the amount of training set to evaluate their individual contribution to the performance. In the first case, we used a one-layer MLPQNA and in a second case a larger training set (60 per cent of the KB). The case with the increased training set led to a negligible improvement in the overall efficiency but at the price of a huge increase in computing time. While, in the case of a single layer MLPQNA network, the performance decreased of about 1 per cent. This can be understood by taking into account that the complexity introduced by the second hidden layer in the architecture of the neural network is always justified when the KB samples the OPS only sparsely. In the case discussed here, even with a reduced KB, the number of samples in the training set was sufficiently high to ensure a proper coverage of the OPS and to minimize the requirements on generalization capabilities. The additional complexity introduced by the

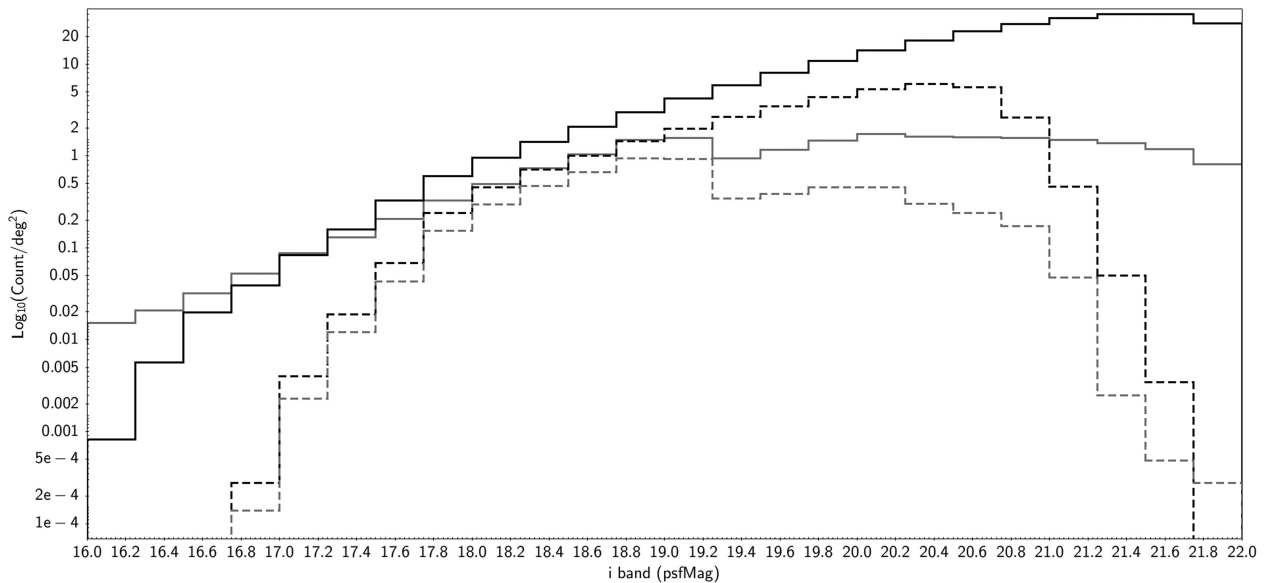


Figure 2. Logarithmic distribution of the number of objects per square degree as a function of $psfMag_i$ magnitude, before (solid line) and after (dashed line) the quality cut specified by Croom et al. (2009). Black lines refer to our catalogue, grey lines to the SDSS spectroscopic sample. The solid black line represents the resulting catalogue of candidate quasars/AGNs, consisting of ~ 3.6 million objects. While the dashed black line indicates the ~ 0.5 million objects flagged as robust candidates.

second layer proves indeed very useful in presence of much smaller KBs (Cavuoti et al. 2012). Surprisingly enough, the introduction of mag i cuts in the parameter space (experiment 3b) did not lead to any significant improvement in the method efficiency.

In summary, using optical data only, the MLPQNA seems quite effective in identifying galaxies (completeness 97.02 and contamination 6.51 per cent) from QSO and stars (Table 13).

We performed the supervised learning classification experiment to produce a catalogue of high fidelity candidate QSO selected on photometric data only. The classification is based on a membership probability criterion: for each object the model output is based on three different membership pseudo-probabilities (a confidence level for each class). Therefore, the values in Table 13 are referred to these confidence levels for all objects of the blind test set (technique also known as *winner-takes-all*; Grossberg 1973). With this method, in the case of the selected best experiment, we reached a QSO class purity of ~ 87 per cent. Afterwards, since our goal was to reach the highest level of purity in the produced catalogue, we performed a further statistical analysis of the test set starting from the results of the experiment 3a, by assessing the variation of purity versus completeness as a function of the increasing confidence threshold used to evaluate the QSO candidates from the trained MLPQNA model output. At the end, we reached a purity of ~ 95 per cent in the blind test set, at the price of a reduced completeness. The resulting QSO photometric catalogue contains 3 602 210 candidates and will be made publicly available through the CDS VizieR facility.

We wish to emphasize that a three-class classification approach offers a significant advantage with respect to the traditional approach based on serialized series of two-class classification steps, since it does not introduce systematic biases due to objects which are misclassified at each step of the sequence. Specifically, the separation among star, galaxies and quasars could be achieved via two independent classification steps: first separating resolved (galaxies) from unresolved objects (stars and quasars) and then dividing the latter group into stars and quasars. Objects misclassified at the first step would be propagated into the next step.

Restricting ourselves to the QSO versus STAR classification, in the three-class experiment we achieve an overall accuracy of 91.5 per cent, with a QSO purity of 88.4 per cent and QSO completeness of 95.3 per cent. Therefore, by comparing this result with those of the two-class experiment (Table 12) there is a noticeable improvement of accuracy in the three-class experiment. This confirms the fact that a three-class approach is preferable to the hierarchical chain of two-class experiments. The slight decrease in QSO completeness found in the three-class experiment may be simply due to the higher separation complexity of the experiment.

It needs to be stressed, however, that the catalogue of candidate quasars needs to be used with some cautions. In fact, no a priori defined photometric cuts have been applied to the data and our operative definition of a quasar was induced only by the properties of the spectroscopic KB. Hence, any bias, potentially present in the KB, would be reflected in the final definition of the catalogue.

Let us, for instance, take into account the bright end of the luminosity distribution. It is well known that the SDSS quasar catalogue is fairly (~ 95 per cent) complete for $i < 19.1$ (Winchatz & Anderson 2007; Ross et al. 2012). If we consider the produced catalogue, within the flux limit of $i < 19.1$ we find ~ 50 per cent more candidates than those present in the spectroscopic sample. But, as already discussed in the literature (Croom et al. 2009), this bright end is strongly contaminated by stars, UVX sources and, mainly, by narrow emission-line galaxies. In order to isolate luminous quasars, Croom et al. (2009) used a complex system of photometric cuts:

- (A) $u-g < 0.8 \cap g-r < 0.6 \cap r-i < 0.6$;
- (B) $u-g > 0.6 \cap g-i > 0.2$;
- (C) $u-g > 0.45 \cap g-i > 0.35$;
- (D) $galprob > 0.99 \cap u-g > 0.2 \cap g-r > 0.25 \cap r-i < 0.3$;
- (E) $galprob > 0.99 \cap u-g > 0.45$.

These cuts were indeed combined through the logical expression $[A \cap B \cap C \cap D \cap E]$, to carve the optimal quasar locus in the OPS.

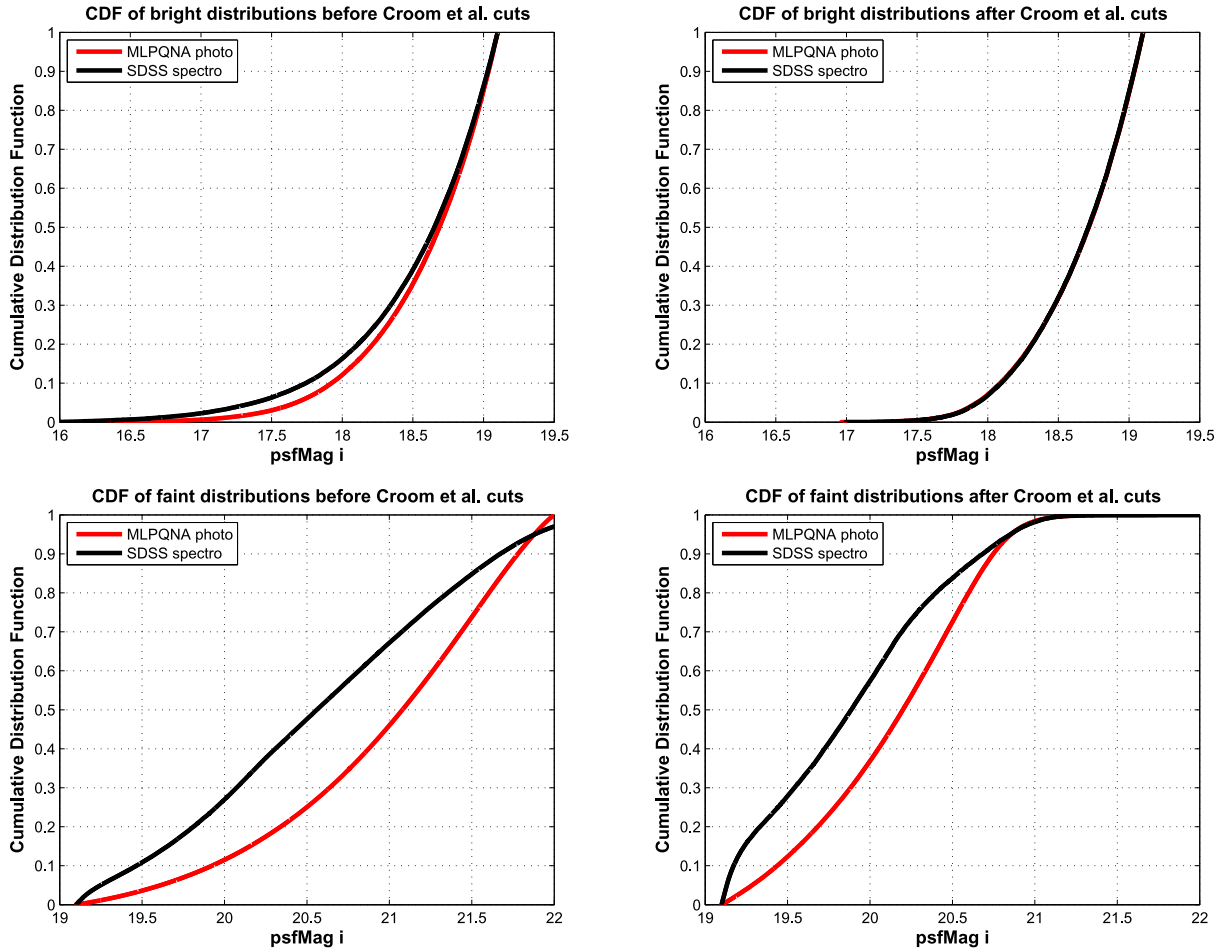


Figure 3. Results of the 1D Kolmogorov–Smirnov (K–S) test to compare the $psfMag_i$ band distributions of QSO/AGN candidates between the photometric catalogue (red line) and the spectroscopic KB (black line). The upper side diagrams show the tests done for brighter sources ($i < 19.1$), respectively, before (upper left) and after (upper right) the cuts of Croom et al. (2009). The lower side reports the same type diagrams for fainter sources ($i \geq 19.1$). The K–S test resulted positive in the two cases shown in the upper side diagrams, confirming the similarity at the 95 per cent of significance level within the spectroscopic completeness limit. In particular, the two distributions appear perfectly overlapped in the upper right diagram.

If we apply the above conditions to both spectroscopic KB and the final catalogue of candidate quasars, under the flux limit of $i < 19.1$ the overabundance of objects in the produced catalogue is reduced of the ~ 17 per cent.

In other words, while ML methods prove very effective in partitioning the OPS accordingly to the information contained in the spectroscopic KB, the correct interpretation of their output needs to be fine tuned using the expert’s (i.e. the astronomer’s) knowledge. For this reason, in order to allow interested readers to apply their own filters to the data, the catalogue contains all the relevant photometric information.

In Fig. 2, we compare the number of candidate QSOs (solid black line) in our catalogue versus the number of objects in the KB which are spectroscopically identified as QSOs (solid grey line), both before and after (dashed lines) the cuts of Croom et al. (2009). Before the cuts, the excess of spectroscopically confirmed AGNs/QSOs at bright magnitudes ($i < 17$) can be easily explained by the fact that low-luminosity AGNs, which are spectroscopically identified, can easily escape photometric detection since the relative weight of the AGN contribution is negligible with respect to the contribution of the central regions of the galaxy. Furthermore, in this magnitude range the SDSS sample is highly unbalanced, thus causing the

MLPQNA model to be less accurate in terms of training performance on the QSO class. After applying the Croom et al. (2009) selection criteria, however, the agreement between the two distributions becomes remarkably good and it is maintained down to the completeness limit of the SDSS spectroscopic sample ($i = 19.1$). Beyond such limit, the two distributions begin to differ due to both new candidate quasars that were not spectroscopically confirmed in the SDSS (region between the two dashed lines) and to a contamination from low-/medium-luminosity AGNs (region between the two black lines) which, as it has been discussed in Section 5.1, cannot be disentangled on the grounds of optical photometry only.

The trends depicted in the diagram of Fig. 2 find a statistical confirmation in Fig. 3, where we show the results of the 1D Kolmogorov–Smirnov (K–S) test (Ledermann 1982), graphically represented through the cumulative $psfMag_i$ band distribution functions. The test has been performed to compare the distributions of QSO/AGN candidate sources, respectively, between the photometric catalogue and the spectroscopic KB, before and after the completeness limit of the SDSS spectroscopic sample ($i = 19.1$) and the Croom et al. (2009) cuts application. Within the completeness limit, the K–S test confirms the similarity of the two distributions, perfectly overlapping after the application of Croom et al. (2009)

cuts. Beyond the completeness limit, the K–S test makes evident a difference between the two distributions, considered reasonable by taking into account the incompleteness of the spectroscopic sample.

In the produced catalogue, a quality flag has been included to take the Croom et al. (2009) cuts into consideration.

6 CONCLUSIONS

The main scope of the present work was to investigate the possibility of disentangling different spectral classes of objects, by exploiting the ML based model named MLPQNA (Brescia et al. 2012). In order to reach these goals, three categories of experiments have been performed.

In a first group of experiments, we investigated the possibility to disentangle different spectroscopic types present in the GALAXY class. All experiments, summarized in Tables 5 and 11, were unable to separate AGNs from normal galaxies on the grounds of optical data only, although the overall efficiency is always ~ 90 per cent, thus confirming what we found in Cavuoti et al. (2014b). By excluding the AGN class, in all other cases where the number of representative objects in the KB is sufficiently large, the disentangling appears quite feasible, in particular by considering results of the experiment *NBA* (Table 10).

The second one concerned distinguishing between QSO and STAR classes. The results, shown in Table 12, confirmed the findings of Abraham et al. (2012), that the use of 10 colours, rather than the standard four colours, although without carrying a great amount of additional information, may help ML methods to find better solutions.

The third category focused on identifying candidate QSOs from the whole catalogue including also stars and galaxies, thus permitting to release the candidate QSO photometric catalogue. In this case, the possibility of avoiding the known downside of hierarchical pairwise classification (multiplicative propagation of misclassification), induced an intrinsic advantage of a direct classification of QSOs from the whole catalogue. The resulting catalogue of QSO candidates contains 3 602 210 objects, of which 529 923 are flagged as robust candidates, according to the quality flag introduced to take into account the Croom et al. (2009) selection criteria. This catalogue will be made publicly available through the CDS VizieR facility. As discussed in the text, the catalogue requires to be filtered according to the specific needs of the user.

ACKNOWLEDGEMENTS

The authors wish to thank the anonymous referee for all very useful comments and suggestions which greatly helped to clarify and to improve the readability of the paper. The authors wish to acknowledge the financial support from the PRIN 2011 MIUR grant *Cosmology with Euclid*. MB acknowledges financial support from PRIN-INAF 2014 *Glittering Kaleidoscopes in the sky, the multifaceted nature and role of galaxy clusters*. We made use of Topcat tool developed within the Virtual Observatory, and the data mining infrastructure DAMEWARE. This research has made use of the SDSS III DR10 and VizieR catalogue data access tools.

REFERENCES

Abraham S., Philip N. S., Kembhavi A., Wadadekar Y. G., Sinha R., 2012, *MNRAS*, 419, 80
Ahn C. P. et al., 2014, *ApJS*, 211, 17

Antonucci R., 1993, *ARA&A*, 31, 473
Borne K., 2010, *BAAS*, 42, 578
Brescia M., Cavuoti S., Paolillo M., Longo G., Puzia T. H., 2012, *MNRAS*, 421, 1155
Brescia M., Cavuoti S., D’Abrusco R., Mercurio A., Longo G., 2013, *ApJ*, 772, 140
Brescia M. et al., 2014, *PASP*, 126, 743
Byrd R. H., Nocedal J., Schnabel R. B., 1994, *Math. Prog.*, 63, 129
Cavuoti S., Brescia M., Longo G., Mercurio A., 2012, *A&A*, 546, 13
Cavuoti S., Brescia M., Longo G., 2014a, *Proc. IAU Symp. 306, Data-Rich Astronomy: Mining Sky Surveys with PhotoRapToR*. In: *Statistical Challenges in Cosmology in the 21st Century*, Cambridge Univ. Press, Cambridge
Cavuoti S., Brescia M., D’Abrusco R., Longo G., Paolillo M., 2014b, *MNRAS*, 437, 968
Cavuoti S., Brescia M., De Stefano V., Longo G., 2015, *Experimental Astronomy*. Springer, *MNRAS*, 39, 45
Croom S. M. et al., 2009, *MNRAS*, 392, 19
D’Abrusco R., Longo G., Walton N. A., 2009, *MNRAS*, 396, 223
Dawson K. S. et al., 2013, *AJ*, 145, 10
Djorgovski S. G., Mahabal A., Drake A., Graham M., Donalek C., 2012, in Bond H., Oswalt T., eds., *Astronomical Techniques, Software, and Data, Vol. 2, Planets, Stars, and Stellar Systems*. Springer-Verlag, Berlin, p. 223
Eisenstein D. J. et al., 2011, *AJ*, 142, 72
Ge J. et al., 2008, in Fischer D. et al., eds., *ASP Conf. Ser. Vol. 398. Extreme Solar Systems*, proceedings of the conference held 25–29 June, 2007, Santorini Island, Greece, p. 449
Geisser S., 1975, *J. Am. Stat. Ass.*, 70, 320
Grossberg S., 1973, *Studies Appl. Math.*, 52, 213
Kewley L. J., Dopita M. A., Sutherland R. S., Heisler C. A., Trevena J., 2001, *ApJ*, 556, 121
Lamareille F., 2010, *A&A*, 509, A53
Ledermann W., 1982, *Handbook of Applicable Mathematics*, Vol. 6. Wiley, New York
Lintott C. J. et al., 2008, *MNRAS*, 389, 1179
Majewski S. R., SDSS-3/APOGEE Coll., 2014, *AAS Meeting*, 223
Messias H., Afonso J., Hopkins A., Mobasher B., Dominici T., Alexander D. M., 2010, *ApJ*, 719, 790
Palanque-Delabrouille N. et al., 2013, *A&A*, 551, A29
Pilbratt G. L. et al., 2010, *A&A*, 518, L1
Richards G. T. et al., 2002, *AJ*, 123, 2945
Richards G. T. et al., 2004, *ApJS*, 155, 257
Richards G. T. et al., 2009, *ApJS*, 180, 67
Rosenblatt F., 1961, *Principles of Neurodynamics: Perceptrons and the Theory of Brain Mechanisms*. Spartan Books, Washington DC
Ross N. P. et al., 2012, *ApJSS*, 199, 29
Schweitzer M. et al., 2006, *ApJ*, 649, 79
Sinha R. P., Philip N. S., Kembhavi A. K., Mahabal A. A., 2007, *Highlights Astron.*, 14, 609
Stoughton C. et al., 2002, *ApJ*, 123, 485
Urry M. C., Padovani P., 1995, *PASP*, 107, 803
Winchatz B. B., Anderson S. F., 2007, *MNRAS*, 374, 1506
Yanny B. et al., 2009, *AJ*, 137, 4377
York D. G. et al., 2000, *AJ*, 120, 1579

This paper has been typeset from a $\text{\TeX}/\text{\LaTeX}$ file prepared by the author.