



Publication Year	2020
Acceptance in OA	2022-03-17T13:18:20Z
Title	The spectral impact of magnetic activity on disc-integrated HARPS-N solar observations: exploring new activity indicators
Authors	Thompson, A. P. G., Watson, C. A., Haywood, R. D., Costes, J. C., de Mooij, E., Collier Cameron, A., Dumusque, X., Phillips, D. F., Saar, S. H., Mortier, A., Milbourne, T. W., Aigrain, S., Cegla, H. M., Charbonneau, D., COSENTINO, Rosario, Ghedina, A., Latham, D. W., López-Morales, M., MICELA, Giuseppina, MOLINARI, Emilio Carlo, PORETTI, Ennio, SOZZETTI, Alessandro, Thompson, S., Walsworth, R.
Publisher's version (DOI)	10.1093/mnras/staa1010
Handle	http://hdl.handle.net/20.500.12386/31661
Journal	MONTHLY NOTICES OF THE ROYAL ASTRONOMICAL SOCIETY
Volume	494



The spectral impact of magnetic activity on disc-integrated HARPS-N solar observations: exploring new activity indicators

A. P. G. Thompson¹,¹★ C. A. Watson,¹ R. D. Haywood,²† J. C. Costes,¹ E. de Mooij,^{1,3}
A. Collier Cameron^{1,4}, X. Dumusque,⁵ D. F. Phillips,² S. H. Saar,² A. Mortier^{1,6},
T. W. Milbourne,² S. Aigrain,⁷ H. M. Cegla^{1,5}, D. Charbonneau,² R. Cosentino,⁸
A. Ghedina,⁸ D. W. Latham,² M. López-Morales,¹ G. Micela,⁹ E. Molinari,¹⁰
E. Poretti,⁸ A. Sozzetti,¹⁰ S. Thompson⁶ and R. Walsworth²

¹*Astrophysics Research Centre, School of Mathematics and Physics, Queen's University Belfast, BT7 1NN Belfast, UK*

²*Center for Astrophysics, Harvard & Smithsonian, 60 Garden Street, Cambridge, MA 02138 USA*

³*School of Physical Sciences and Centre for Astrophysics and Relativity, Dublin City University, Glasnevin, Dublin 9, Ireland*

⁴*SUPA, School of Physics and Astronomy, University of St Andrews, North Haugh, St Andrews KY16 9SS, UK*

⁵*Observatoire Astronomique de l'Université de Genève, 51 Chemin des Maillettes, 1290 Sauverny, Suisse*

⁶*Astrophysics Group, Cavendish Laboratory, University of Cambridge, J.J. Thomson Avenue, Cambridge CB3 0HE, UK*

⁷*Oxford Astrophysics, Denys Wilkinson Building, University of Oxford, OX1 3RH Oxford, UK*

⁸*INAF – Fundacion Galileo Galilei, Rambla Jose Ana Fernandez Perez 7, E-38712 Brena Baja, Spain*

⁹*INAF – Osservatorio Astronomico di Palermo, Piazza del Parlamento 1, I-90134 Palermo, Italy*

¹⁰*INAF – Osservatorio Astrofisico di Torino, via Osservatorio 20, I-10025 Pino Torinese, Italy*

Accepted 2020 April 7. Received 2020 April 7; in original form 2019 June 7

ABSTRACT

Stellar activity is the major roadblock on the path to finding true Earth-analogue planets with the Doppler technique. Thus, identifying new indicators that better trace magnetic activity (i.e. faculae and spots) is crucial to aid in disentangling these signals from that of a planet's Doppler wobble. In this work, we investigate activity related features as seen in disc-integrated spectra from the HARPS-N solar telescope. We divide high-activity spectral echelle orders by low-activity master templates (as defined using both $\log R'_{HK}$ and images from the Solar Dynamics Observatory, SDO), creating 'relative spectra'. With resolved images of the surface of the Sun (via SDO), the faculae and spot filling factors can be calculated, giving a measure of activity independent of, and in addition to, $\log R'_{HK}$. We find pseudo-emission (and pseudo-absorption) features in the relative spectra that are similar to those reported in our previous work on α Cen B. In α Cen B, the features are shown to correlate better to changes in faculae filling factor than spot filling factor. In this work, we more confidently identify changes in faculae coverage of the visible hemisphere of the Sun as the source of features produced in the relative spectra. Finally, we produce trailed spectra to observe the radial velocity component of the features, which show that the features move in a redward direction as one would expect when tracking active regions rotating on the surface of a star.

Key words: techniques: radial velocities – Sun: activity – Sun: faculae, plages – planets and satellites: detection.

1 INTRODUCTION

In Thompson et al. (2017), and hereafter Paper I, we investigated the impact of stellar activity from α Cen B on HARPS spectra,

by comparing observations taken during magnetically active and inactive phases. This work uncovered a forest of 'pseudo-emission features': increases in the intensity of the relative spectra constructed by dividing 'high-activity' spectra (as defined by $\log R'_{HK}$) by a low-activity template spectrum. These features varied in strength and velocity on time-scales of the stellar rotation period, and also correlated well with the passage of a region of activity as seen in $\log R'_{HK}$. This work has since been verified by Wise

* E-mail: athompson1501@qub.ac.uk

† NASA Sagan Fellow.

et al. (2018) and Lisogorskyi, Jones & Feng (2019). In addition, in Paper I, we found morphological differences in the pseudo-emission features that pointed to the underlying physics driving the line-profile changes. Simple modelling of the shapes and strengths of these pseudo-emission features strongly indicated that the spectral variability was likely being driven by faculae, rather than starspots.

This is potentially an important result in the field of radial velocity (RV) measurements of extrasolar planets. While active stars are spot-dominated, quiet stars are known to be plage/faculae-dominated (Radick, Lockwood & Baliunas 1990; Hall et al. 2009; Lockwood et al. 2007; Shapiro et al. 2016). Faculae and plage are the terms used to describe bright magnetic regions in stellar atmospheres, with faculae being used when describing these regions within the photosphere, and plage as its chromospheric counterpart. It is faculae that is believed to represent the fundamental barrier to the RV detection of, for example, an Earth analogue (Saar & Donahue 1997; Saar 2003; Meunier, Desort & Lagrange 2010; Dumusque, Boisse & Santos 2014; Haywood et al. 2016). Appearing as bright magnetic regions, faculae suppresses the underlying convection in the stellar atmosphere. Since convection consists of uprising, bright, hot material (granules) that cools and sinks into dark intergranular lanes, convective motion imprints a predominantly blueshifted signal on spectral lines. Where faculae occurs, the associated enhanced magnetic field inhibits convection – which suppresses the convective blueshift component relative to the surrounding photosphere. This leads to spurious RV signals as active regions both evolve and rotate across the stellar disc. The higher filling factor, more homogeneous distribution, and lower contrast of faculae compared to the much darker spots have made faculae difficult to track in both light curves and spectra. As a result, techniques to remove their effects such as the FF' method (Aigrain, Pont & Zucker 2012) assume that faculae and spots are spatially coincident, which then allows the light curves to inform the RV noise solution (since the light-curve modulation of the spots can be monitored). In the case of the Sun, however, we know that this underlying assumption (that spots and faculae are spatially coincident) is not the case. For example, the longer lifetimes of facular regions relative to spots (see Shapiro et al. 2020, and references therein) mean they can persist for several solar rotations, whereas sunspots rarely complete more than 1 rotation. Thus, faculae are frequently unrelated to spots.

While there are a number of other sophisticated astrophysical noise removal techniques that perform well (see Dumusque et al. 2017, for a comprehensive breakdown of the most up-to-date techniques used within RV measurements), most do not make use of the wealth of information contained within a spectrum. The standard approach to mitigating RV noise from stellar activity is to decorrelate stellar noise from measured RVs using cross-correlation function (CCF) parameters. These include the CCF full width at half-maximum (e.g. Queloz et al. 2009; Hatzes et al. 2010) and bisector span (Queloz et al. 2001) – although recent work has demonstrated that using a skewed-normal distribution provides a more self-consistent result than measuring CCF parameters and bisector span separately (Simola, Dumusque & Cisewski-Kehe 2019). Other recent work has also tried to make better use of the high-resolution spectral information by instruments like HARPS. Dumusque (2018), for example, looked at the RV motion of individual lines rather than using a CCF. They were able to categorize spectral lines as either being sensitive or insensitive to changes in activity, allowing for either a reduction in the RV variation due to activity (i.e. better for planet detection) or to better isolate the RV variation due to activity to probe the surface of stars. Indeed, with

our previous work in Paper I, we see individual lines responding differently to the effects of activity, with some lines more affected by activity than others. This valuable activity information can become more entangled with planetary RV signals when using the averaging approach of the CCF.

The aim of this paper is to conduct a similar analysis to that of Paper I and determine whether individual spectral-line variability (driven by stellar activity) can also be identified in disc-integrated spectra of the Sun. This would also enable the underlying cause (sunspots or faculae) of such variability to be determined by directly relating such variability to observable features on the solar surface. Determining the activity-sensitive lines in the Sun may also be of future use for uncovering an Earth-analogue planet. We obtained high-resolution, disc-integrated solar spectra using the HARPS-N solar telescope (Phillips et al. 2016), a small solar telescope that feeds light into the HARPS-N instrument on the Telescopio Nazionale Galileo (TNG, Cosentino et al. 2012). In this study, we perform a similar analysis to Paper I and follow the framework laid out in it: producing relative solar spectra to highlight any changes in the strength of spectral lines and correlate these with activity indicators like $\log R'_{HK}$, as well as spot- and faculae-filling factors determined via Solar Dynamics Observatory (SDO) images.

The paper is structured as follows. In Section 2, we describe the HARPS-N solar telescope, as well as the data reduction process. This section also includes an investigation into, and removal of, a strong etaloning found in the data. In Section 3, we perform a search of the data for features similar to those found in α Cen B (Paper I) and produce trailed spectra to better visualize the RV variations of the features. The results of this search are discussed and summarized in Section 4.

2 DATA AND DATA REDUCTION

Data for this study were obtained using the HARPS-N solar telescope. This is an instrument that takes full disc-integrated spectroscopic measurements of the Sun to better understand how surface inhomogeneities can affect precise RV measurements. Using its unique ‘Sun-as-a-star’ observing capabilities, the RV signatures of stellar activity can be isolated from that of the (known) Doppler wobble shifts induced by the solar-system planets – providing a clean trace of the astrophysical noise associated with solar activity. Only a brief description of the instrument is given here, see Phillips et al. (2016) for more detail on the telescope and Dumusque et al. (2015) for information on its science goals. The HARPS-N solar telescope is a small 3-inch telescope that takes light from the Sun and fibre feeds it to the HARPS-N instrument. Being the only setup to operate at the telescope during the day, the survey is run continuously and limited only by weather. A 5-min exposure time is selected to reduce the effects of solar oscillations. Since seeing first light on 2015 July 18, the telescope has been continuously taking data, and at the time of writing there are over 60 000 high-resolution, high signal-to-noise (S/N) measurements of the Sun spanning over three years (see Cameron et al. 2019, for the data of the first three years).

For the analysis presented in this paper, a small subset of the data was selected based on the level of solar activity, and was processed in a similar way to Paper I to produce comparable results. The time interval selected contained 69 d worth of data from 2016 June 16 to August 24 (MJD:57555–57624). This 2016 interval was selected as this shows a clear periodic modulation of the $\log R'_{HK}$ over two solar rotation periods (highlighted in the embedded panel in Fig. 1) and exhibited one of the largest changes in activity over a single

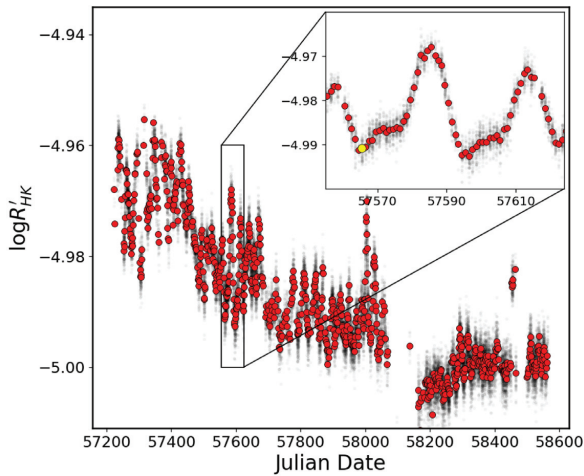


Figure 1. HARPS-N solar telescope $\log R'_{HK}$ measurements of the Sun, where the variability seen is due to active regions rotating on and off the solar surface, with the red points representing the average value per day. Although a large amount of variation can be seen, all these values can be considered as being from a ‘quiet’ star since, during this period, the Sun was on descent into solar minimum. The 2016 interval selected for analysis (MJD:57555–57624) is shown by the zoomed-in region and chosen from the $\log R'_{HK}$ values. The day used for the low-activity template is marked in yellow.

solar rotation period. For this analysis a low-activity template was created, and we selected data from 2016 June 26 for this purpose as it was one of the lowest activity days during the 2016 interval (highlighted as a yellow point in Fig. 1). The spectra from this day were compared to SDO/HMI (Helioseismic and Magnetic Imager) images, which showed no spots on the surface and very little faculae, so represent a close approximation of the Sun having a truly immaculate photosphere.

We would like to note one difference between the analysis conducted in this work, and that conducted in Paper I. In this work, the low-activity template spectrum (against which all other spectra are compared in our analysis in order to monitor spectral-line changes) is taken from within the 2016 June 16–August 24 period itself. This is different from our analysis presented in Paper I, where the low-activity template spectrum used was from the minimum of α Cen B’s activity cycle – which occurred some years before the ‘high-activity’ period analysed. Thus, in the analysis of the solar-spectrum variations presented in this work, any variations observed are due to rotationally modulated activity (i.e. spots and faculae), and not due to activity-cycle changes. In addition, this will reduce the strength of the activity-related spectral changes we detect, since we have not maximized the activity-level differences between ‘active’ and ‘inactive’ phases.

2.1 Data processing

Initial analysis followed a similar approach to that of Paper I, where the spectra for a single day were stacked after being continuum normalized and interpolated on to the wavelength grid of the low-activity template spectrum. While the $\log R'_{HK}$ for the Sun is much lower than that of α Cen B, the large number of higher S/N spectra technically allows greater sensitivity to spectral changes arising due to activity.

In our analysis of α Cen B, we employed the final merged and re-interpolated 1D-spectra data products from the HARPS data-reduction pipeline. However, in the case of the HARPS-N solar telescope, we observed what turned out to be etaloning of significant amplitude in the high S/N relative spectra (discussed in more detail in Section 2.2). Initially, we thought the observed ripple pattern might be due to the interpolation to a constant wavelength grid done as part of the standard HARPS-N data reduction. We show later in Section 2.2 that this is not the case but is due to etaloning of an optical element within the light path of the instrument. None the less, we used the 2D HARPS-N spectra (a lower level data reduction pipeline product) that consist of stacks of individually extracted echelle orders prior to applying a wavelength solution and stitching into the 1D spectra, adding some additional steps in the subsequent data processing not outlined in Paper I.

First, the blaze profile was removed by dividing through by the blaze calibration file available per day, and if more than one blaze file was available these were averaged together. The blaze correction was applied on an order-by-order basis, where individual blaze functions are available for each order. Second, a wavelength solution was then applied to the 2D spectra using:

$$\lambda = a_0 + \sum_{i=1}^3 a_i n_{\text{pix}}^i \quad (1)$$

where n_{pix} is the pixel number, and a_i are calibration coefficients defined per echelle order and are determined as part of the standard HARPS-N data reduction pipeline. After this point the data were processed in a similar fashion to Paper I; a master template spectrum was created to act as a reference wavelength grid, as well as being the low solar-activity comparison for the data. For this low-activity master template, data from 2016 June 26 were used, and the spectra from this day were individually checked for any obvious issues. A total of 107 spectra from this day were selected. The header files contain the S/N per order, which were used to identify the highest S/N spectrum to use as the template to continuum normalize all the other spectra. A mean of the S/N values for orders 40–50 was used for the selection. Spectra from this day showed S/N values ranging from 267 to 357, with > 90 per cent of the spectra used for the creation of the low-activity master template having an S/N of >300.

Each echelle order was then RV corrected, but rather than using the barycentric RV defined by the HARPS pipeline, the RV corrections were calculated using the JPL Horizons system.¹ While the HARPS-N pipeline is able to accurately measure RVs to the m s^{-1} level, the instrument is not calibrated for taking solar data. The effects of the solar-system planets (most notably Jupiter) on the Sun are not properly corrected for when moving to this barycentric reference frame – see Cameron et al. (2019) for more detail. Therefore, we used JPL Horizons to remove the planetary induced solar RVs as seen from the Earth following the procedure outlined in Cameron et al. (2019). In this sense, the HARPS-N solar telescope data set presents a unique testbed for studying astrophysical noise since it provides data on the only star for which we can confidently say that all the planetary RV signals have been removed. This means that, in our analysis of the impact of stellar activity, we do not have to disentangle its RV effects from those induced by bona-fide planets – providing a ‘clean’ data set for such stellar activity studies.

¹JPL Horizons: <https://ssd.jpl.nasa.gov/horizons.cgi>

The effects of differential extinction across the Solar disc were not considered as part of our data processing. This effect is due to the Solar surface being resolvable in the sky (i.e. it cannot be treated as a point source) causing different parts of its surface to experience different levels of extinction as the Sun moves across the sky. When summed together in a disc-integrated way (as is done with the HARPS-N solar telescope), this can affect the line-profile shape, producing a signal similar to that seen for Rossiter–McLaughlin type measurements, where the leading, or trailing, hemisphere of the Sun would be differently extinguished. As can be seen later in Section 2.2, the effects of differential extinction are not apparent in our results and that, although not directly considered, the effects are reduced as part of our data processing.

These blaze and RV-corrected 2D spectra were next interpolated on to a common wavelength grid using a spline fit, with a spline knot defined at each point on the reference spectrum. Finally, all spectra were stacked per echelle order using a weighted mean with the weights being the same mean of the S/N in orders 40–50 defined earlier. Unlike the 1D spectra, which interpolates each echelle order on to a set wavelength scale, we decided to preserve the original dispersion of each order. In this analysis, we are searching for features within each echelle order, when comparing a single order over a range of observations this dispersion does not change and so will not affect our results. In addition, keeping the original dispersion helps limit any propagation of errors that might be caused by re-interpolating multiple times.

For all high-activity spectra, a similar process was followed but with a number of caveats. First, the low-activity master templates created were used to define the wavelength grid and second, rather than a by-eye evaluation of the spectra, a cut of >100 was set in the S/N to remove bad spectra. Again, the spectra were RV corrected using the JPL Horizons data and stacked per echelle order using a weighted mean. Finally, each stacked spectral echelle order was divided by the equivalent low-activity master template echelle order to produce relative spectra for each order. On producing the relative spectra, however, a significant sinusoidal variation could be seen across the entire range, as mentioned earlier. The left-hand panel of Fig. 2 shows a few examples of the etaloning seen in the relative spectra, which was persistent across all the relative spectra, becoming more obvious towards redder wavelengths.

2.2 Investigation and removal of the etaloning pattern

An initial investigation of the periodic intensity fluctuations across each echelle order showed that these ripples do not have a constant period, but instead their period (measured in \AA) increases from the blue to the red end of the spectrum. The separation between peaks at $\sim 4000 \text{\AA}$ is $\sim 0.2 \text{\AA}$, which becomes $\sim 0.5 \text{\AA}$ at $\sim 5800 \text{\AA}$. The pattern also appears invariant to the activity of the Sun, with the variations of $\log R'_{HK}$ over the period range having no impact on the strength or periodicity of the ripple pattern. This dispersion and lack of correlation with changes on the Sun, coupled with observations of the same periodicity in flat-fielding images suggest that the source of the pattern is instrumental and is likely due to etaloning of an optical element. Below, however, we explore potential other sources (i.e. bad data and/or bad data processing) that could be responsible for the pattern. Our investigation of the etaloning focused on relative spectra generated for the most active phase studied in this paper, namely the 2016 July 14 (with the 2016 June 26 used as the low-activity template comparison). These days were chosen as they show a large difference in $\log R'_{HK}$, and were expected to show the strongest pseudo-emission features in the relative spectrum if

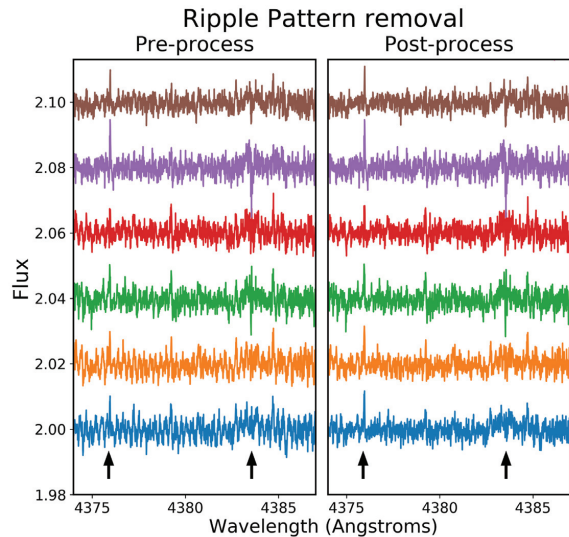


Figure 2. Pre- (left-hand panel) and post-processing (right-hand panel) of the daily stacked relative spectra to remove the etaloning. Each relative spectrum, produced by dividing each spectrum by the low-activity template, is from a different day and shows the variation in the strength of the pattern. This demonstrates the need for a manual by-eye reduction. The black arrows indicate the position of known features in the relative spectrum (see Section 3 where we show that these are indeed activity-related features). The relative spectrum in blue shows a good example of the success of the etaloning removal process, where the features cannot be clearly seen prior to the removal but are an obvious signal in the post-processed relative spectrum.

present. As the purpose of this investigation was to identify the source of, and remove, the etaloning (while maintaining any activity related pseudo-emission features), relative spectra showing larger pseudo-emission features were selected in order to aid the evaluation of the effectiveness of the removal process.

Prior to investigating the etaloning, each spectrum from the sample were individually checked for obvious features that could lead to the pattern. Effects from echelle order mismatch, poor seeing/weather, and RV offsets were considered as potential sources of the pattern but none of the spectra showed any effects from these. As production of the relative spectra involved continuum matching and interpolating the wavelength grid to that of the low-activity template, the choice of low-activity template could also be the source of the pattern observed, or at least may potentially contribute to it. In order to check this, spectra from 2016 November 12 were selected as an alternative low-activity template but, again, the etaloning persisted.

As outlined above, instead of working with full 1D spectra, we used 2D spectra to remove any errors introduced by resampling of the data to an even wavelength grid. The data were processed following the procedure outlined earlier (Section 2.1) to produce relative spectra for each order. The etaloning pattern was analysed for each order using a Generalised Lomb–Scargle (GLS) periodogram (Zechmeister & Kürster 2009), which showed that the frequency (measured in \AA^{-1}) with peak amplitude decreases moving from the lower echelle orders to the higher orders (see Fig. 3). A number of individual orders from other daily stacked relative spectra were also analysed using a GLS periodogram. These showed a similar result, with equivalent echelle orders showing a peak in power at the same

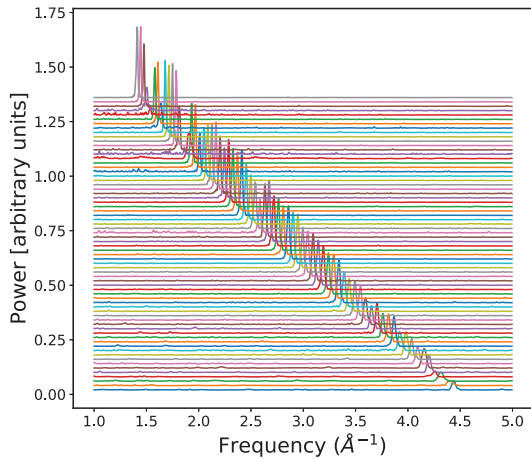


Figure 3. The GLS per echelle order, with internal order 1 (central wavelength $\sim 3897\text{\AA}$) at the bottom and internal order 68 (central wavelength $\sim 6797\text{\AA}$) at the top highlighting the period of the ripple pattern. Per order, the ripple is close to having a non-evolving static periodicity.

frequency. Importantly, the GLS periodograms show that, per order, the ripple pattern is well defined by a small range of frequencies.

This evidence points towards the source of the pattern being the etaloning of an optical element. Per echelle order the pattern is well constrained to a small frequency range – making it a relatively clean signal for the purposes of removing it. The slowly evolving frequency of the etaloning in each individual order can be approximated by fitting a number of sinusoids to the relative spectra. Over a single echelle order the etaloning was captured by applying a low number of sinusoidal fits, with the fit done on an order-by-order basis. To start, a GLS periodogram was performed on the relative spectra of a single echelle order, the highest peak was then identified and set as the frequency of the sine wave – with the amplitude of the fit calculated following the derivation from Zechmeister & Kürster (2009). Finally, a Markov Chain Monte Carlo (MCMC) simulation was used to obtain the wave phase.

The MCMC approach is typically used when analysing models with multidimensional distributions helping prevent these models fits getting stuck in local maxima/minima. For this analysis, the MCMC was chosen to model the phase of the sinusoidal fit as it was found that more conventional χ^2 minimization techniques were not effective at determining a precise value for the phase. This is due to the weak nature of the signal, as well as the model only approximating the evolving frequency of the pattern. Rather than a full rigorous MCMC approach, we use the method to help better explore the parameter space around the best-fitting value. This MCMC-like approach uses similar acceptance/rejection criteria but we did not go through the process of checking for convergence or mixing. As we are fitting only one parameter strong correlation between parameters was not an issue and we found that the technique converged very quickly (within a few 100 steps from a any random starting position). The MCMC-like approach was run with multiple, sequential burn-in phases, after which a final MCMC was run to explore the local parameter space. A boundary condition was also put on the phase that only allowed the MCMC to uniformly sample values between 0 and 2π . A total of 10 burn-in phases, each having 1000 steps, were run one after the other. At each step, the χ^2 value of the fit was calculated and compared to the previous fit for acceptance or rejection based on the Metropolis–Hastings

Table 1. List of the eight internal echelle orders selected for processing to remove the etaloning. None of the other 61 orders showed any pseudo-emission features and so were not considered for the rest of the analysis. Note that the wavelength range is only an approximate value due to RV variations changing the wavelength window in each orders.

Internal order	Wavelength range
15	$\sim 4253\text{--}4300$
18	$\sim 4344\text{--}4393$
22	$\sim 4472\text{--}4522$
24	$\sim 4538\text{--}4589$
30	$\sim 4751\text{--}4804$
36	$\sim 4985\text{--}5041$
37	$\sim 5026\text{--}5082$
61	$\sim 6269\text{--}6339$

algorithm (Metropolis et al. 1953). At the end of each burn-in run the step size was adjusted and taken as the standard deviation of the values in that run. This allows for a larger step size when far from the best fit and a reduced step size as the model parameters approach good estimates. The starting position of the next burn-in was taken as the last value of the previous run (with the phase initially set to zero prior to the first burn-in run). This burn-in phase is used to get good estimates of the parameter starting position and step sizes. A final MCMC was run over 5000 steps and the values of this run were used to estimate the phase. A histogram of this final MCMC run was calculated and a Gaussian was fit to it, where the peak of the fitted Gaussian defined the phase of the sine wave model.

This model sine wave was then removed from the relative spectrum and the residuals checked, using a GLS periodogram, to determine its effectiveness. If any strong periods are found in the periodogram, the process was rerun over the residuals to fit the next strongest periodic signal. This process is repeated until the GLS shows no strong peaks above the noise floor. It was found that by applying the etaloning removal process three times the evolving periodicity was almost entirely removed. On some occasions only 1 or 2 sine waves were needed to remove the etaloning. Conversely, by fitting additional sine waves, variations were re-introduced into the relative spectra. The choice of the final model then required a by-eye approach to stop any overfitting. Examples of the etaloning and the results after its removal are shown in Fig. 2, where the pattern can be seen in some cases to completely obscure real spectral features.

As a check, each of the echelle orders from the relative spectra of 2016 July 14 were processed to remove the etaloning (i.e. the same date initially chosen for the investigation into the etaloning). While the approach used was able to substantially reduce the impact of the etaloning per echelle orders, it was found that for a number of orders the residual effects of the etaloning still dominated the relative spectra. However, we were able to identify 8 out of the 69 orders (see Table 1) that exhibited strong features that could be activity-related spectral variations similar to those of α Cen B reported in Paper I. In addition, the 2016 July 14 represents the highest activity level (as measured by $\log R'_{HK}$) of the 2016 interval, meaning that any activity-based features would be strongest here. For these reason, only the 8 orders in Table 1 were processed to remove the etaloning for the rest of the 2016 interval. This has the added advantage of speeding up the analysis as the etaloning removal process is time intensive, requiring a visual inspection of each model fit to confirm its effectiveness.

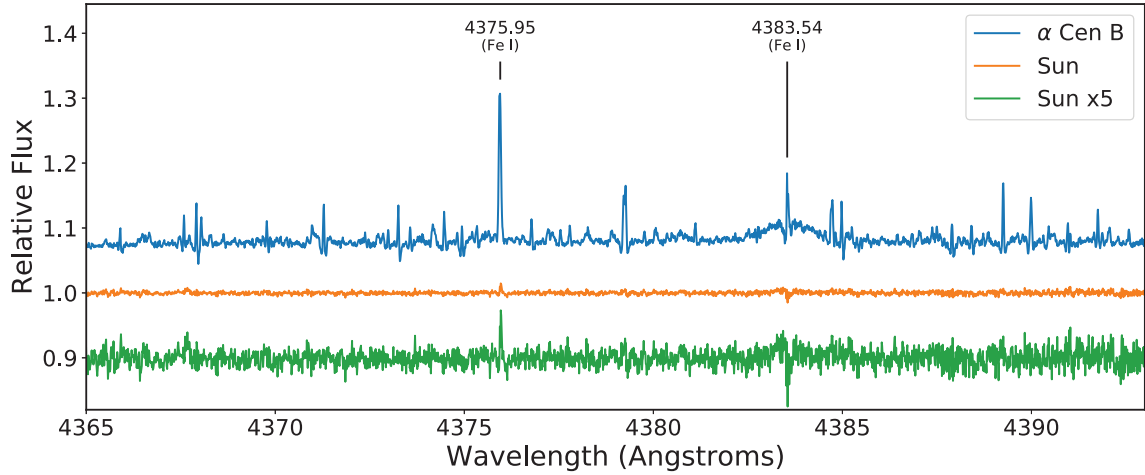


Figure 4. Comparison of the features found on the relative spectra (generated by dividing a high-activity spectrum by a low-activity template) of α Cen B (blue), discussed in Paper I, with features found on the Sun (orange). The strongest narrow peak belongs to the Fe I 4375 Å line, and the broader feature is due to Fe I 4383 Å as indicated. The lower activity level of the Sun means that the features are considerably weaker. Both the orange and green lines show relative spectra from the Sun, but with the values increased by a factor of 5 for the green line, allowing the features to be more easily compared. Note that, for the Sun, only a few features are easily visible compared to the forest of features found on α Cen B, which is due, in part, to residual etaloning noise.

Table 2. Lines that show a feature in the relative spectra and the echelle order each line is in. The Pearson’s r statistic is shown for each of the features with respect to spot filling factor, faculae filling factor, $\log R'_{HK}$, and the daily medians of the activity indices measured by Maldonado et al. (2019, see the text for details). This is for the interval 2016 June 16–August 24. The identified element/ion is taken from the Vienna Atomic line Database (Ryabchikova et al. 2015).

Line (wavelength, Å)	Element/ Ion	Echelle order	Spots	faculae	Pearson’s r $\log R'_{HK}$	H α	H β	H γ	H δ	He	Na
4375.95	Fe I	18	0.214	0.392	0.387	0.105	−0.133	0.272	0.099	0.142	0.315
4501.35	Ti II	22	0.651	0.731	0.740	0.069	−0.211	−0.185	0.150	−0.192	−0.006
4783.43	Mn I	30	0.209	0.496	0.454	0.114	−0.335	−0.170	0.012	0.134	0.334
5007.27	Fe I	36	0.118	0.387	0.546	0.101	0.091	−0.130	0.213	−0.123	−0.081
5012.12	Fe I	36	0.165	0.495	0.531	0.254	−0.307	−0.123	0.277	0.288	0.438
5014.27	Ti I	36	0.340	0.684	0.587	0.029	−0.417	−0.062	0.187	0.016	0.288

3 RESULTS

The relative spectra of the final eight reduced echelle orders all showed some indications of features that could be due to solar activity. The three strongest features (out of the hundreds present) highlighted in our study of α Cen B in Paper I (4375, 4383, and 4404 Å) are also seen in the Sun, but are far weaker due to the Sun’s lower activity level. Fig. 4 shows a comparison between the relative spectrum of the Sun (this study) and that of α Cen B (from Paper I) for echelle order 18 – which contains prominent pseudo-emission features arising in the 4375 and 4383 Å lines (the 4404 Å line, although present, is not shown as this line is in a different echelle order). Both of these features are also clearly visible in the Sun, while the multitude of weaker features seen in the relative spectra of α Cen B are less easy to identify visually in the solar data.

As a note, in Section 2 we mentioned that the effects of differential extinction were not considered, and that this could impact the shape of the observed solar-absorption lines – mimicking a Rossiter–McLaughlin like signature as the leading or trailing hemisphere becomes more heavily extinguished. However, to first order, such an effect would impact all lines equally, which is not what we see here. In addition, our use of daily stacks would also act to largely cancel out such intraday effects. Thus, the impact of differential extinction is not responsible for the features seen in Fig. 4 and, as we explain later, such features are clearly linked to the solar

rotation period and appearance of active regions. This also provides confidence that such features do not arise due to incorrect removal of the etaloning (Section 2.2).

Visual inspection of the relative spectra was used to identify features that showed variability that could be linked to solar activity – from this, six relatively strong features were identified for further investigation (see Table 2 and Appendix A for plots of each of the features found). Other features initially identified were either too weak to be seen in many of the other relative spectra, or did not show variability consistent with activity (and are likely weak telluric lines that are only seen due to the very high S/N of the daily stacked spectra). A Gaussian was fit to each of the activity-related features identified, with the area of the fitted Gaussian taken as an estimate of the feature strength (a pseudo-equivalent width measure similar to that used in Paper I). For cases where the features were too weak to measure, no pseudo-equivalent width was calculated.

The pseudo-equivalent widths of the features were compared to $\log R'_{HK}$ (as was done in Paper I) to determine if activity is the driving force behind the changes in strength observed. While $\log R'_{HK}$ is a good proxy for the level of activity on the surface of a star, it traces chromospheric activity and not changes to the photosphere. In the Solar case, we have the additional benefit of images of the surface. Changes in the relative spectra can be directly compared to inhomogeneities seen on the photosphere of the Sun

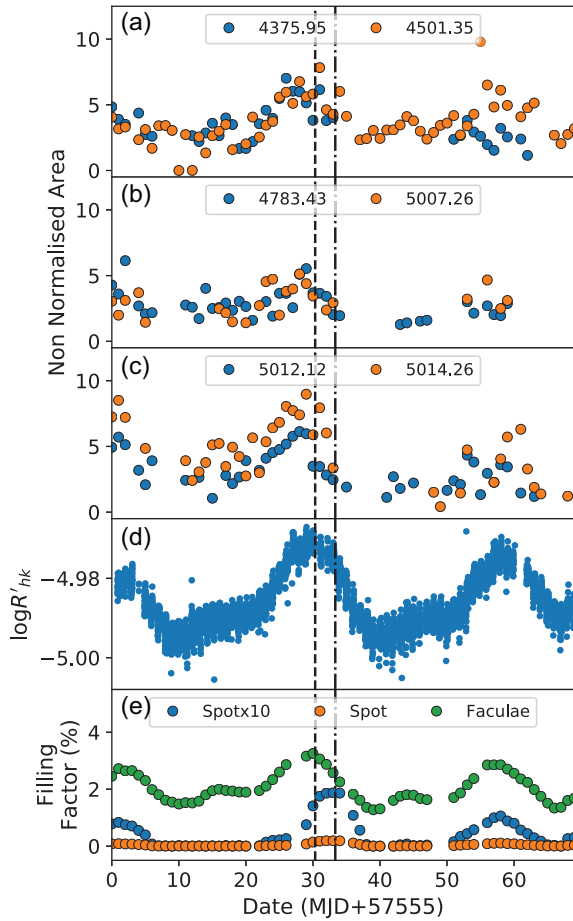


Figure 5. Pseudo-equivalent widths for all six features separated over three plots for ease of viewing. (a) Features at 4375 and 4501 Å, (b) features at 4783 and 5007 Å, and (c) features at 5012 and 5014 Å (missing data points are due to the feature at that time being too weak to reliably measure). These are compared to (d) $\log R'_{HK}$ and (e) spot and facular filling factors. The spot filling factor has been increased by a factor of 10 to allow ease of viewing. The dashed and dotted–dashed lines show the peak in faculae and spot filling factors, respectively. Note the faculae have a phase offset in their peak filling factor, indicating unassociated facular regions, and how the changing equivalent width of the pseudo-emission features appear to better trace the variation in faculae filling factor rather than spots filling factor.

and additionally allow for spot and faculae contributions to be monitored separately. We use the method outlined in Haywood et al. (2016), where the authors used images from the HMI aboard the SDO (Scherrer et al. 2012) to measure the filling factors of facular regions and spots on the visible surface of the Sun. Using SDO/HMI flattened intensitygrams, line-of-sight Dopplergrams and unsigned magnetograms, a threshold in the magnetic field strength of each pixel ($B > 24$ G) was used to separate quiet Sun from active regions, while a threshold in the flattened continuum intensity ($I > 0.89\hat{I}_{QS}$, where \hat{I}_{QS} is the mean intensity of the quiet Sun) allows for spots and faculae to be differentiated. The pseudo-equivalent width of the features in the relative spectra were then compared to $\log R'_{HK}$ and the spot and faculae filling factors as shown in Fig. 5.

All six features show variations that appear to correlate with $\log R'_{HK}$, showing a peak in the pseudo-equivalent width measurements close to where the peak in $\log R'_{HK}$ can be seen. This is most

clear for the lines at 4375 and 4501 Å in Fig. 5, where the two peaks in $\log R'_{HK}$ at ~ 30 and ~ 57 d have equivalent peaks in the pseudo-equivalent width of the two lines. This is a similar result to that seen in Paper I and adds further evidence that the features are generated by activity. Additionally, comparing the pseudo-equivalent widths with the spot and faculae filling factors shows an offset in the peak of the pseudo-equivalent widths compared to the peak in the spot filling factor. Pearson’s r correlations for pseudo-equivalent widths versus spot and faculae filling factors, as well as $\log R'_{HK}$, are shown in Table 2. This indicates that the pseudo-emission features being tracked in the solar spectra change in a manner more strongly correlated to changes in the faculae filling factor, rather than the spot filling factor.

Maldonado et al. (2019) conducted a study of conventional solar-activity indicators (using the same HARPS-N solar telescope data used in this work) and include activity indices of the $H\alpha$, $H\beta$, $H\gamma$, $H\delta$, $Na\ I\ D1\ D2$, and $He\ I\ D3$ lines. We also present the Pearson’s r correlation coefficients between the daily medians of these indices and our pseudo-equivalent widths in the final six columns of Table 2. We find no particularly strong correlation or anticorrelation between our pseudo-emission features and these other activity indicators, with the strongest correlations still with the faculae filling factors and $\log R'_{HK}$. The lack of correlation with these other activity indicators is perhaps unsurprising. Maldonado et al. (2019) note that measurements of $He\ I$, $Na\ I$, and $H\alpha$ are all impacted by telluric lines either contaminating the cores or continua of these indices. We also checked the spectra over the dates analysed, and indeed found substantial telluric contamination of these lines during the dates under study. The pseudo-emission features, however, are telluric free – demonstrating a potential advantage of using these new activity indicators. In addition, the response of the $H\alpha$ line to activity can be complex, first showing a deeper absorption profile as activity increases until the electron density becomes sufficiently high that the line then becomes collisionally excited, at which point increasing core emission is observed. Furthermore, on short time-scales it is known that $\log R'_{HK}$ and $H\alpha$ does not correlate strongly. Indeed, Maldonado et al. (2019) find that the Pearson’s r correlation coefficient between $H\alpha$ and S-index for the Sun can vary from nearly -0.7 to $+0.6$ when analysing different ~ 90 -d observation windows, and for other stars a large dispersion is also seen in the correlations between $H\alpha$ and the $Ca\ II\ H\ \&\ K$ activity indicators (e.g. Cincunegui, Díaz & Mauas 2007). This dispersion may be caused by filaments, which are more prominent in the Balmer lines (e.g. Meunier & Delfosse 2009). Thus, if filaments are not well correlated with faculae, then such activity indicators may fail to follow the faculae filling factors.

To further test the correlation between the pseudo-emission features in the solar spectra and the faculae filling factor, the interval of the 2016 July 4–27 was isolated in the data set. This period is of interest as a facular region rotates on to the visible hemisphere several days prior to the emergence of a prominent spot group. This provides a small time window where we can directly disentangle whether the spectral variability we observe is driven by faculae or by spots. This lag between the faculae and the spots rotating into view is clearly demonstrated in Fig. 6. This lag can also be seen in the bottom panel of Fig. 5, where the faculae filling factor can be seen to rise several days before the spot filling factor follows suit – with the peaks in the respective filling factors indicated by the vertical dashed/dotted–dashed lines. As can be easily seen, the pseudo-emission feature strengths closely follow the faculae filling factor. Pearson’s r correlation coefficients were measured for the features over this time range, and shows an overall increase in the

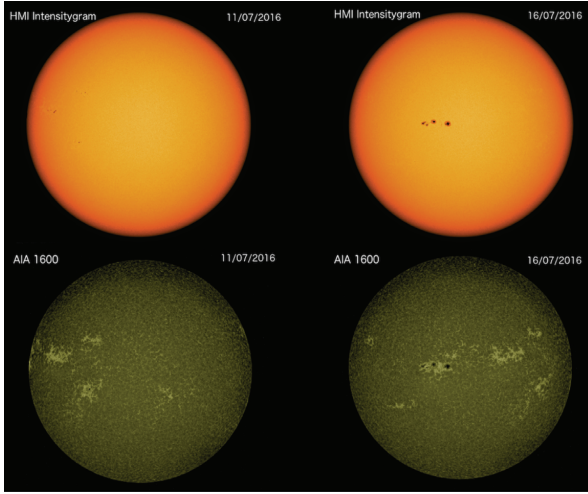


Figure 6. SDO/HMI images of the Sun from two different dates highlighting the extended unassociated facular regions. The images show two filters chosen to better view each type of activity, with the spots clearly seen in the HMI intensitygram (top panels) and the faculae most visible in the AIA 1600 (bottom panels). The left-hand panels (taken from the 2016 July 11) clearly shows that faculae, with little to no associated spots, rotates into view first. A few days later on 2016 July 16 (right-hand panels) an extended spot group then rotates into view and is offset from the major facular region.

correlation with the faculae, but a slight decrease in correlation with the spots (see Table 3) – further supporting our interpretation that the pseudo-emission features are faculae driven. This was also what we concluded in Paper I, where we used simple modelling to fit the morphologies of the features seen in α Cen B, which consisted of a limb-darkened disc (representing the stellar surface) with an active region (either spot or faculae) placed at disc centre. The properties of the disc and active region could then be altered to fit the different pseudo-emission morphologies observed (more details can be found in Paper I). The results of this model showed evidence that faculae are needed to fully account for the pseudo-absorption troughs observed. This result further corroborates our findings in Paper I.

The feature at 4501.35 Å does not show much of a change in correlation strength between the full 2016 interval data set and the reduced set. This feature, however, is the only one to show a pseudo-absorption dip rather than a pseudo-emission peak in the relative spectra (Fig. 7 shows an example of this feature, as well as the 4375 Å feature for comparison). This suggests that the line responsible for this feature is deeper when the Sun is in a higher activity state, as opposed to the rest of the lines, which show pseudo-emission peaks and are shallower in the high-activity state, and may indicate

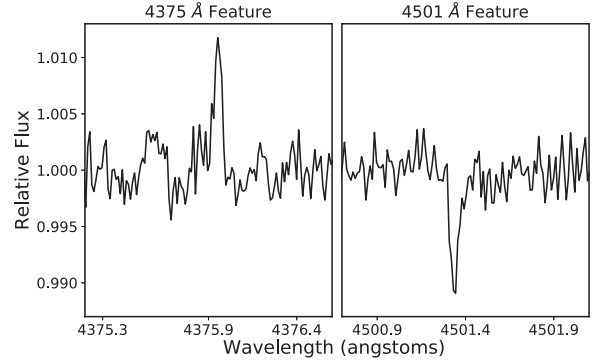


Figure 7. Example of the pseudo-absorption dip of the 4501 Å feature as well as the 4375 Å feature for comparison. This example is from the 2016 July 14 and is one of the highest activity days of the 2016 interval.

a different mechanism that alters this line. A more in-depth analysis of the different morphologies of the pseudo-emission lines (and the physical mechanisms responsible for these) will be the subject of a future paper.

Recent work by Milbourne et al. (2019) performed a complementary analysis to that presented here. They compare HARPS-N solar telescope RV and $\log R'_{HK}$ measurements to activity filling factors using a similar approach as Haywood et al. (2016) to identify activity from SDO/HMI images. In addition to defining spot and faculae filling factors, as we do in this work, the authors further defined a network filling factor. Network is similar to faculae and differs only in size, Meunier et al. (2010) define network as being bright structures outside of active regions (while faculae are bright structures in active regions). Following this approach, Milbourne et al. (2019) split their bright activity filling factor into faculae (bright active regions having a size >20 micro-hemispheres) and network (<20 micro-hemispheres) filling factors.

We measured the correlation of the pseudo-emission features with respect to both the faculae and network filling factors as defined in Milbourne et al. (2019) and find that the features more strongly correlate to faculae than to network. This is not an unexpected result and can be understood by examining the nature of the two activity structures. Although both faculae and network cause brightening of the photosphere due to increased concentration of magnetic field lines, network is much more homogeneously distributed than faculae. This means that, over the short-period range considered in this analysis, only a small change in the network filling factor is seen as the network does not evolve much over this time-scale. Faculae, being more localized on the solar surface, shows a much larger variation as extended active regions rotate on and off the visible hemisphere of the Sun. When correlating the pseudo-emission

Table 3. Same as Table 2, but for the range 2016 July 4–27, which is dominated by faculae that is unassociated with spots. The results indicate that the features better trace the changes in faculae coverage than spot coverage.

Line (wavelength, Å)	Element/ Ion	Echelle Order	Pearson's r Spots	Pearson's r faculae	$\log R'_{HK}$	H α	H β	H γ	H δ	He	Na
4375.95	Fe I	18	0.252	0.646	0.768	0.233	-0.068	-0.198	0.365	-0.119	0.151
4501.35	Ti II	22	0.635	0.832	0.838	-0.031	-0.099	-0.003	0.193	-0.193	0.014
4783.43	Mn I	30	-0.010	0.662	0.607	-0.354	-0.172	-0.025	-0.032	-0.301	-0.065
5007.27	Fe I	36	0.049	0.385	0.548	0.026	-0.041	-0.190	0.267	-0.088	0.071
5012.12	Fe I	36	-0.239	0.402	0.675	0.203	-0.325	-0.370	0.261	0.258	0.381
5014.27	Ti I	36	0.217	0.743	0.731	-0.103	-0.203	-0.214	0.187	-0.200	0.005

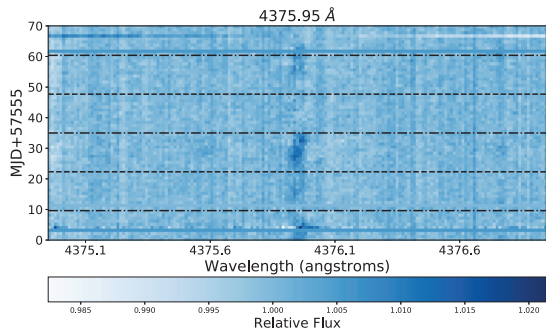


Figure 8. Trailed relative spectrum of the 4375 Å line, where the horizontal dashed and dotted–dashed lines are the Carrington rotation and half periods, respectively. The main feature from the 4375 Å pseudo-emission peak can be seen to have a positive slant indicating that the feature has an RV component appearing to move from blueshift to redshift as it traverse the solar disc. Note the spectrum at ~ 5 d has low S/N, explaining the offset feature. Featureless horizontal blue bands (e.g. as seen at day 4) represent periods where no HARPS-N solar telescope data were taken.

features presented in this work with faculae and network filling factors of Milbourne et al. (2019), we see higher correlation with the more localized, rotationally modulated, faculae compared to the much more homogeneously distributed network. This comparison further strengthens the result that the features are not only driven by magnetic activity, but are tracking changes in the faculae filling factor.

3.1 Radial velocity variations of features

In order to investigate any RV motion the features may have, we create trailed spectra centred at the wavelength of each of the features. Fig. 8 shows a trailed spectrum of the strong pseudo-emission feature seen in the relative spectra for the 4375 Å line. The dashed and dotted–dashed lines represent the Carrington rotation period (i.e. 25.38 d, Carrington 1859) and half of that, respectively. As only one hemisphere of the Sun can be seen, the half rotation period can be useful in determining when an active region would migrate off the visible surface of the Sun after it first rotates into view. The position of the markers were chosen from the SDO/HMI images, with the zero-point based on identifying a large feature seen to rotate on to the visible surface of the Sun and is *not* chosen to intentionally line up with any features in the relative spectra. In Fig. 8, the feature at 4375 Å is seen to be encapsulated within a half-rotation of the Sun, as one would expect from an active region rotating on and off the visible solar hemisphere. This can most easily be seen at ~ 22 – 35 d, where the feature can be easily picked out from the background noise. The feature can also be seen to have a directionality showing a positive slant indicating an RV component of the feature moving from blueshift to redshift, which would be expected if the feature was a result of activity rotating across the solar surface. A number of daily spectra were not considered from the time range due to instrumental or weather effects, the position of these spectra can be seen as solid horizontal lines in the trailed spectrum.

Fig. 9 shows the same trailed spectrum for the 4501 Å feature, which appears as absorption in the relative spectra. Again, this is fully captured within the same ~ 22 – 35 d half rotation period block and shows the same positive slant – indicating that the variation in this feature is also driven by changes due to active regions

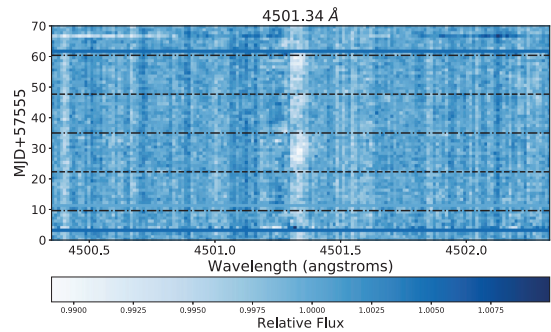


Figure 9. Trailed relative spectrum of the 4501 Å line. The difference in colour with respect to Fig. 8 is due to this line producing a pseudo-absorption dip. Again, the feature can be seen moving from blueshift to redshift.

rotating across the solar surface. This RV motion of the pseudo-emission features is similar to that measured for the features in α Cen B in Paper I, further supporting that result. Measurement of these pseudo-emission features then not only give an indication of the level of activity, but also provides velocity information of the active regions themselves, potentially allowing for the active regions to be better localized on the stellar surface. Such velocity information could be highly beneficial in dealing with astrophysical noise in RV measurements, providing a more detailed understanding that could be used to more completely model and remove its effects.

The rest of the features show a similar scenario with the peaks in pseudo-equivalent width modulated on the solar rotation period, however no indication of RV variation can be seen in any of these other cases.

4 DISCUSSION

We show that some of the same ‘pseudo-emission’ features found in α Cen B (Paper I) are also seen in the Sun. This is despite the Sun being in, or approaching, a relatively deep minimum in the solar-activity cycle. This work shows that we are sensitive to variations in individual lines in even quiet stars and, from a stellar activity point of view, information gained from studying solar activity can be scaled, at least, to the activity level of α Cen B. With resolved images of the surface of the Sun, the features can be further characterized as being due to changes in the level of faculae coverage, which is supported by the Pearson’s r statistic showing a stronger correlation of the features with faculae than spots – as well as the stronger correlation to faculae than network using the filling factors from Milbourne et al. (2019). In Paper I, we found that assuming spots alone was not enough to produce the distinct pseudo-emission feature morphologies observed in α Cen B and that the addition of faculae was needed to more fully recreate the features. The results here further strengthen this conclusion, as we are able to relate the spectral signals detected directly to the appearance of faculae on the solar surface.

In addition, we find that the peak in the pseudo-equivalent widths of the relative features are offset from the spot filling factor. By considering the SDO/HMI images, the peak can be seen to better coincide with the appearance of the extended faculae region and the rotation of this region as it moves from the east to the west limb of the Sun. The second peak in the pseudo-equivalent width can be seen at ~ 58 d and corresponds to the same extended unassociated faculae region returning. This suggests that regions dominated by faculae, with little to no associated spots (i.e. unassociated facular

regions), are the main driver of the features seen in the relative spectra of the Sun.

Although we do not show the magnitude of the RV variation of the pseudo-emission features, the trailed spectra demonstrate that, at least for the two strongest (4375 and 4501 Å), there is an RV component (a result similar to that found in Paper I). This motion may be a source of astrophysical noise that could impact the RV measurements of planets if not correctly accounted for. The addition of velocity information to these new stellar activity indicators could prove useful in future astrophysical noise correction techniques or as a new set of priors for existing correction techniques that model activity using a Bayesian framework (e.g. Rajpaul et al. 2015).

Other work has shown that faculae dominates inactive stars (Radick et al. 1990; Hall et al. 2009; Lockwood et al. 2007; Shapiro et al. 2016) and thus will dominate the RV jitter signal (Saar & Donahue 1997; Saar 2003; Meunier et al. 2010; Dumusque et al. 2014; Haywood et al. 2016), the results here for the Sun align with this paradigm. The results also show, however, that the effects of activity are more complex than can be captured by the $\log R'_{HK}$ of a star. For the Sun at least, faculae that are not associated with spots seem to show a larger impact on the relative spectra and may be the main source of pseudo-emission features seen. From this, one can see that the configurations of active regions (i.e. whether or not spots and faculae are associated) is just as important as the level of coverage. This suggests that the RV jitter due to activity could vary even if the $\log R'_{HK}$ of the star does not change and could have a significant impact on the use of some stellar jitter reduction techniques. This is most likely to only be applicable for low-activity stars where the faculae dominates in activity, but these are also the kind of stars that Earth analogues are most likely to be found around.

While the effects of faculae and plage can dominate the RV jitter of low-activity stars, the low contrast of these active regions against the quiet star photosphere means they cause little photometric variability. Methods such as the FF' (Aigrain et al. 2012), for example, accounts for the effects of faculae and plage by assuming that it is related to the spots. The technique assumes that a spot is surrounded by an extended magnetised area that suppresses the convective blueshift (e.g. plage/faculae) and the RV jitter caused by this region can be estimated by tracking photometric variability due to spots. The results here show that, for low-activity stars like the Sun and for certain configurations of activity, the unassociated faculae may generate a more significant impact on the relative spectrum than that of associated spots and faculae.

The nature of the impact of this on methods like the FF' is twofold. In one instance, if faculae/plage are not associated with spots, then the effects of these regions will not be accounted for by using spots as a proxy for activity. Additionally, as the unassociated faculae is offset from any spots, any RV jitter correction applied that assumes faculae and spots are coincident will have a phase shift from what could be a major contributor to the activity. This could, in turn, inject spurious signals into the RV measurements. Recent work by Oshagh et al. (2017) found that the FF' method systematically underpredicted the amplitude of the RV jitter over the range of activity levels tested, which became significant at low-activity levels, i.e. the level at which plage/faculae effects are expected to dominate. The work here further supports this result, giving a physical interpretation of how activity-driven photometric variability may incorrectly account for the RV jitter of low-activity stars.

Photometrically driven methods such as the FF' method are still good first steps in accounting for activity (and still hold for more active stars that are spot dominated). It is possible that the

activity indicators presented here could be incorporated into such a physically motivated model to improve the removal process in the low-activity regime.

Although we were able to limit the effects of the strong etaloning seen in the relative spectra, we were not able to fully identify its source. This effect may be resolved, or at the very least better modelled, by performing our own reduction of the raw images that is better optimized for the high S/N, daily stacked regime we consider. However, this would be a substantial undertaking and outside the scope of this current investigation.

As a brief final note, in Paper I, we show the existence of two distinct morphologies within the relative features – those with and without a pseudo-absorption trough surrounding the main peak of the narrow features. In the Sun we did not find conclusive evidence for this ‘trough’ morphology. This is most likely due to the lower activity level of the Sun, which produces a dearth of features in the relative spectra when compared to that of α Cen B. The features that we do see are smaller in strength so more difficult to determine if a trough feature is present. A better model for the etaloning may increase the detail of the features presented here as well as identify other, weaker features. The choice of low-activity template could also be re-visited. Newer data, showing lower levels of activity, could be used instead, which would boost the strength of the features. Both these improvements could not only help determine if the same variation in pseudo-emission feature morphology is seen in the solar case but also identify other lines that may be activity sensitive.

5 CONCLUSIONS

In conclusion, using data from the HARPS-N solar telescope, we produce ‘relative spectra’ by dividing high-activity echelle orders by low-activity templates and find, after removing a pattern caused by etaloning, a number of pseudo-emission features. These features correlate well with $\log R'_{HK}$ and the faculae-filling factors derived from SDO images, but show significantly smaller or no correlation with spot-filling factors or activity indices published by Maldonado et al. (2019) for the $H\alpha$, $H\beta$, $H\gamma$, $H\delta$, Na I D1 D2, and He I D3 lines.

In addition, we focus on a period when a prominent facular region can be seen to rotate on to the visible solar hemisphere at a time when no sunspots are visible. Again, we see that the pseudo-emission features react strongly to the appearance of this facular region – suggesting that these features are directly tracking changes in faculae coverage. This strengthens the conclusions made in our previous work on α Cen B (Paper I), providing further evidence that the pseudo-emission features track changes in stellar activity and, in particular, faculae. This is important, since it is faculae (and the underlying suppression of the convective blueshift) that is thought to represent the fundamental barrier to RV measurement precisions in the context of exoplanet detection. The fact that the correlation with more standard activity indices (such as $H\alpha$) is much smaller may be due to a combination of effects – including telluric line contamination of the $H\alpha$, Na I D1 D2, and He I D3 lines; complex line formation; and that some of these indicators (in particular the Balmer lines) may be more sensitive to filaments.

Finally, we produce trailed spectra and observe the features redshifting as they move across the solar surface, indicating the pseudo-emission feature have an RV motion. The features are encapsulated within one-half of a solar rotation, and further supports our interpretation that the features are driven by activity on the visible surface of the Sun. The pseudo-emission features thus contain both activity and velocity information and could form the

basis of an activity indicator that can directly track and remove the effects of faculae to improve planet RV measurements.

ACKNOWLEDGEMENTS

The HARPS-N project has been funded by the Prodex Program of the Swiss Space Office (SSO), the Harvard University Origins of Life Initiative (HUOLI), the Scottish Universities Physics Alliance (SUPA), the University of Geneva, the Smithsonian Astrophysical Observatory (SAO), and the Italian National Astrophysical Institute (INAF), the University of St Andrews, Queen's University Belfast, and the University of Edinburgh.

Based on observations made with the Italian TNG operated by the *Fundación Galileo Galilei* (FGG) of the *Istituto Nazionale di Astrofisica* (INAF) at the *Observatorio del Roque de los Muchachos* (La Palma, Canary Islands, Spain).

CAW acknowledges support from Science and Technology Facilities Council grant ST/P000312/1.

ACC acknowledges support from the Science and Technology Facilities Council (STFC) consolidated grant number ST/R000824/1.

XD is grateful to The Branco Weiss Fellowship – Society in Science for its financial support.

SHS is grateful for support from NASA Heliophysics LWS grant NNX16AB79G. HMC acknowledges the financial support of the National Centre for Competence in Research Planets supported by the Swiss National Science Foundation (SNSF).

AM acknowledges support from the senior Kavli Institute Fellowships.

This work was performed partly under contract with the California Institute of Technology (Caltech)/Jet Propulsion Laboratory (JPL) funded by NASA through the Sagan Fellowship Program executed by the NASA Exoplanet Science Institute (RDH).

This publication was made possible through the support of a grant from the John Templeton Foundation. The opinions expressed in this publication are those of the authors and do not necessarily reflect the views of the John Templeton Foundation. This work was performed in part under contract with the Jet Propulsion Laboratory (JPL) funded by NASA through the Sagan Fellowship Program executed by the NASA Exoplanet Science Institute (in support of RDH).

Finally, we would like to acknowledge the excellent discussions and scientific input by members of the International Team, 'Towards Earth-like Alien Worlds: Know thy star, know thy planet', supported by the International Space Science Institute (ISSI, Bern).

REFERENCES

Aigrain S., Pont F., Zucker S., 2012, *MNRAS*, 419, 3147
Cameron A. C. et al., 2019, *MNRAS*, 487, 1180

- Carrington R. C., 1859, *MNRAS*, 19, 81
Cincunegui C., Díaz R. F., Mauas P. J. D., 2007, *A&A*, 469, 309
Cosentino R., et al., SPIE, 2012, in *Ground-based and Airborne Instrumentation for Astronomy IV*, p. 84461V
Dumusque X., 2018, *A&A*, 620, A47
Dumusque X., Boisse I., Santos N. C., 2014, *ApJ*, 796, 132
Dumusque X. et al., 2015, *ApJ*, 814, L21
Dumusque X. et al., 2017, *A&A*, 598, A133
Hall J. C., Henry G. W., Lockwood G. W., Skiff B. A., Saar S. H., 2009, *AJ*, 138, 312
Hatzes A. P. et al., 2010, *A&A*, 520, A93
Haywood R. D. et al., 2016, *MNRAS*, 457, 3637
Lisogorskiy M., Jones H., Feng F., 2019, *MNRAS*, 485, 4804
Lockwood G. W., Skiff B. A., Henry G. W., Henry S., Radick R. R., Baliunas S. L., Donahue R. A., Soon W., 2007, *ApJS*, 171, 260
Maldonado J. et al., 2019, *A&A*, 627, A118
Metropolis N., Rosenbluth A. W., Rosenbluth M. N., Teller A. H., Teller E., 1953, *J. Chem. Phys.*, 21, 1087
Meunier N., Delfosse X., 2009, *A&A*, 501, 1103
Meunier N., Desort M., Lagrange A. M., 2010, *A&A*, 512, A39
Milbourne T. W. et al., 2019, *ApJ*, 874, 107
Oshagh M. et al., 2017, *A&A*, 606, A107
Phillips D. F., et al., 2016, in *Advances in Optical and Mechanical Technologies for Telescopes and Instrumentation II*, SPIE, p. 99126Z
Queloz D. et al., 2001, *A&A*, 379, 279
Queloz D. et al., 2009, *A&A*, 506, 303
Radick R. R., Lockwood G. W., Baliunas S. L., 1990, *Science*, 247, 39
Rajpaul V., Aigrain S., Osborne M. A., Reece S., Roberts S., 2015, *MNRAS*, 452, 2269
Ryabchikova T., Piskunov N., Kurucz R. L., Stempels H. C., Heiter U., Pakhomov Y., Barklem P. S., 2015, *Phys. Scr.*, 90, 054005
Saar S. H., 2003, in Deming D., Seager S., eds, *ASP Conf. Ser. Vol. 294, Scientific Frontiers in Research on Extrasolar Planets*. Astron. Soc. Pac., San Francisco, p. 65
Saar S. H., Donahue R. A., 1997, *ApJ*, 485, 319
Scherrer P. H. et al., 2012, *Sol. Phys.*, 275, 207
Shapiro A. I., Solanki S. K., Krivova N. A., Yeo K. L., Schmutz W. K., 2016, *A&A*, 589, A46
Shapiro A. I., Amazo-Gómez E. M., Krivova N. A., Solanki S. K., 2020, *A&A*, 633, A32
Simola U., Dumusque X., Cisewski-Kehe J., 2019, *A&A*, 622, A131
Thompson A. P. G., Watson C. A., de Mooij E. J. W., Jess D. B., 2017, *MNRAS*, 468, L16
Wise A. W., Dodson-Robinson S. E., Bevenour K., Provini A., 2018, *AJ*, 156, 180
Zechmeister M., Kürster M., 2009, *A&A*, 496, 577

APPENDIX A:

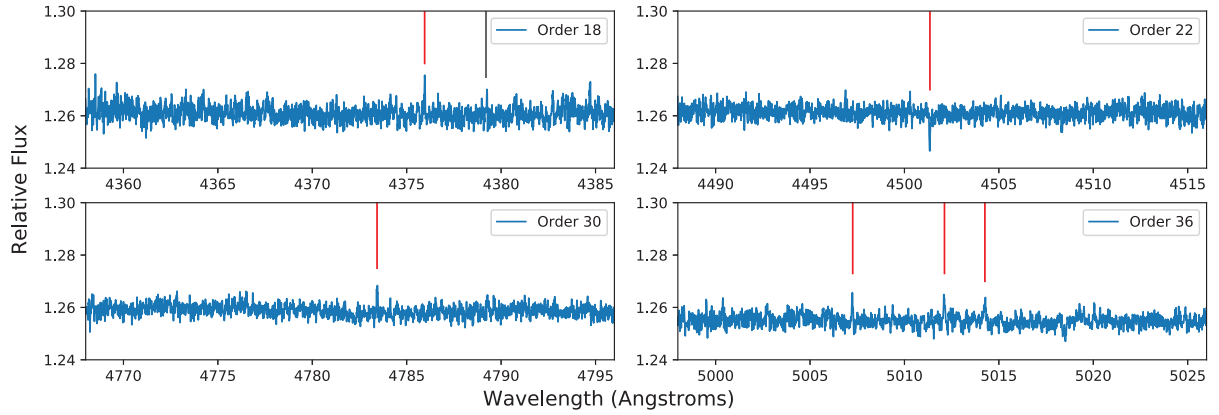


Figure A1. Relative spectra of each of the echelle orders used in this analysis taken from the day with the highest activity as traced by $\log R'_{HK}$ (that of 2016 July 14). The vertical lines in red show the positions of identified pseudo-emission (and pseudo-absorption in the case of order 22) features found in the relative spectra that correlate with activity measurements (either $\log R'_{HK}$ or spot and faculae filling factors). The exact positions of the features can be found in Table 2. The grey vertical lines shows the position of the 4383 Å line, this produces a broad features (which can be seen more clearly in Fig. 4) and not used in this analysis due to difficulties in obtaining an accurate measure of it.

This paper has been typeset from a $\text{\TeX}/\text{\LaTeX}$ file prepared by the author.