










# Sub-damped Lyman $\alpha$ systems in the XQ-100 survey – II. Chemical evolution at $2.4 \leq z \leq 4.3$

Trystyn A. M. Berg <sup>1</sup>★, Michele Fumagalli <sup>2,3,4</sup>, Valentina D’Odorico <sup>5,6</sup>, Sara L. Ellison <sup>7</sup>,  
 Sebastián López <sup>8</sup>, George D. Becker <sup>9</sup>, Lise Christensen <sup>10</sup>, Guido Cupani,<sup>5</sup> Kelly D. Denney,<sup>11</sup>  
 Rubén Sánchez-Ramírez <sup>12,13</sup> and Gábor Worseck <sup>14,15</sup>

<sup>1</sup>European Southern Observatory, Alonso de Cordova 3107, Casilla 19001, Santiago, Chile

<sup>2</sup>Dipartimento di Fisica G. Occhialini, Università degli Studi di Milano Bicocca, Piazza della Scienza 3, I-20126 Milano, Italy

<sup>3</sup>Institute for Computational Cosmology, Durham University, South Road, Durham DH1 3LE, UK

<sup>4</sup>Centre for Extragalactic Astronomy, Durham University, South Road, Durham DH1 3LE, UK

<sup>5</sup>INAF – Osservatorio Astronomico di Trieste, Via Tiepolo 11, I-34143 Trieste, Italy

<sup>6</sup>Scuola Normale Superiore, Piazza dei Cavalieri, 7, I-56126 Pisa, Italy

<sup>7</sup>Department of Physics and Astronomy, University of Victoria, Victoria, BC V8P 1A1, Canada

<sup>8</sup>Departamento de Astronomía, Universidad de Chile, Casilla 36-D, Santiago, 7550000, Chile

<sup>9</sup>Department of Physics & Astronomy, University of California, Riverside, CA 92521, USA

<sup>10</sup>DARK, Niels Bohr Institute, University of Copenhagen, Lyngbyvej 2, DK-2100 Copenhagen, Denmark

<sup>11</sup>Department of Astronomy, The Ohio State University, 140 West 18th Avenue, Columbus, OH 43210, USA

<sup>12</sup>INAF, Istituto di Astrofisica e Planetologia Spaziali, Via Fosso del Cavaliere 100, I-00133 Roma, Italy

<sup>13</sup>Instituto de Astrofísica de Andalucía (IAA-CSIC), Glorieta de la Astronomía s/n, E-18008 Granada, Spain

<sup>14</sup>Max-Planck-Institut für Astronomie, Königstuhl 17, D-69117 Heidelberg, Germany

<sup>15</sup>Institut für Physik und Astronomie, Universität Potsdam, Karl-Liebknecht-Str 24/25, D-14476 Potsdam, Germany

Accepted 2021 January 18. Received 2021 January 18; in original form 2020 February 21

## ABSTRACT

We present the measured gas-phase metal column densities in 155 sub-damped Ly $\alpha$  systems (subDLAs) with the aim to investigate the contribution of subDLAs to the chemical evolution of the Universe. The sample was identified within the absorber-blind XQ-100 quasar spectroscopic survey over the redshift range  $2.4 \leq z_{\text{abs}} \leq 4.3$ . Using all available column densities of the ionic species investigated (mainly C IV, Si II, Mg II, Si IV, Al II, Fe II, C II, and O I; in order of decreasing detection frequency), we estimate the ionization-corrected gas-phase metallicity of each system using Markov chain Monte Carlo techniques to explore a large grid of CLOUDY ionization models. Without accounting for ionization and dust depletion effects, we find that the H I-weighted gas-phase metallicity evolution of subDLAs is consistent with damped Ly $\alpha$  systems (DLAs). When ionization corrections are included, subDLAs are systematically more metal poor than DLAs (between  $\approx 0.5\sigma$  and  $\approx 3\sigma$  significance) by up to  $\approx 1.0$  dex over the redshift range  $3 \leq z_{\text{abs}} \leq 4.3$ . The correlation of gas phase [Si/Fe] with metallicity in subDLAs appears to be consistent with that of DLAs, suggesting that the two classes of absorbers have a similar relative dust depletion pattern. As previously seen for Lyman limit systems, the gas phase [C/O] in subDLAs remains constantly solar for all metallicities indicating that both subDLAs and Lyman limit systems could trace carbon-rich ejecta, potentially in circumgalactic environments.

**Key words:** galaxies: high-redshift – galaxies: ISM – quasars: absorption lines.

## 1 INTRODUCTION

The production and dispersal of metals is a key product of the astrophysical processes that grow and regulate the evolution of galaxies. With the bulk of metals being produced in stars, studying the metallicity evolution of galactic systems within the Universe provides a tracer of the systems’ integrated star formation history (McWilliam 1997; Tolstoy, Hill & Tosi 2009). Galactic-scale winds and outflows are thought to redistribute the stellar material both within and outside galaxies, depositing material from the interstellar medium (ISM) into

both the circumgalactic (CGM) and intergalactic (IGM) media (e.g. Steidel et al. 2010; Lehner et al. 2013; Péroux et al. 2013; Rubin et al. 2014; Kacprzak et al. 2015). Thus characterizing the distribution and evolution of metals in these gaseous reservoirs places fundamental constraints on models of galaxy evolution (Pontzen et al. 2008; Davé, Finlator & Oppenheimer 2011; Peeples et al. 2014).

Gaseous absorbers seen along quasar (QSO) sightlines provide a unique method of probing the evolution of the neutral gas content of the Universe across cosmic time. Both damped and sub-damped Lyman  $\alpha$  systems (DLAs and subDLAs, respectively; H I column densities of  $\log N(\text{H I}) \geq 20.3$  and  $19.0 \leq \log N(\text{H I}) < 20.3$ ) dominate the cosmic H I mass density (Péroux et al. 2003; Prochaska & Wolfe 2009; Noterdaeme et al. 2012; Zafar et al. 2013; Berg et al. 2019a).

\* E-mail: [Trystyn.Berg@eso.org](mailto:Trystyn.Berg@eso.org)

Studies of subDLAs and DLAs with high-resolution spectrographs provide detailed chemical abundances and kinematic structure of the absorbing gas, enabling studies of the chemical enrichment of the Universe (Pettini et al. 1997; Rafelski et al. 2012; Jorgenson, Murphy & Thompson 2013; Som et al. 2015; Fumagalli, O’Meara & Prochaska 2016; Quiret et al. 2016) and kinematic properties of absorbing systems (Prochaska & Wolfe 1997; Ledoux et al. 2006; Neeleman et al. 2013; Christensen et al. 2014).

Despite the wealth of spectroscopic information obtained from individual QSO sightlines, identifying the physical properties of QSO absorbers has remained a challenge. Several studies have focused on distinguishing the masses of the host galaxies associated with subDLAs and DLAs. By assuming a mass–metallicity relation and comparing the metallicity and velocity dispersion (e.g. as traced by the velocity width of the metal line,  $v_{90}$ ; Prochaska & Wolfe 1997) of subDLAs and DLAs, it has been proposed that subDLAs are associated with more massive galaxies than DLAs, as subDLAs are typically found to be more metal rich than DLAs, particularly at redshifts  $z \lesssim 3$  (Khare et al. 2007; Kulkarni et al. 2010).

An alternative explanation for the elevated metallicities in subDLAs is a bias in their identification that stems from selection effects. At  $z \lesssim 1.5$ , when the Ly  $\alpha$  is observed in the UV from space-based observatories, the bulk of subDLAs in the literature has been selected based on the presence of strong Mg II absorption that is easily observed from the ground. While the Mg II pre-selection provides an efficient use of space-based resources (Rao et al. 2017), it potentially leads to the selection of metal-rich systems (Ellison 2006; Murphy et al. 2007; Dessauges-Zavadsky, Ellison & Murphy 2009; Berg et al. 2017). Using simulations, Rhodin et al. (2019) demonstrated that the mass difference of DLAs and subDLA host is an effect of the gas cross-section selections, primarily at  $z < 1$ . Despite several large literature compilations of blind (Rafelski et al. 2012) or uniformly selected DLA studies (Jorgenson et al. 2013), there are only a few blind literature compilations or homogeneous samples of subDLA metal abundances available (Dessauges-Zavadsky et al. 2003; Prochaska et al. 2015; Quiret et al. 2016, with respective sample sizes of 12, 99, and 92 subDLAs). These homogeneous samples of subDLAs have typically shown stronger metallicity evolution in subDLAs with respect to DLAs at  $z_{\text{abs}} \approx 2\text{--}3$  (Péroux et al. 2007; Fumagalli et al. 2016; Quiret et al. 2016).

In concert with the interest in subDLAs for their impact on global metallicity evolution, detailed chemical abundance patterns and their nucleosynthetic origins have been used to understand the physical properties of the host system. The evolution of  $[\alpha/\text{Fe}]$  (where  $\alpha$  represents the elements from  $\alpha$ -capture, such as O, Si, and Mg) and  $[\text{C}/\text{O}]$  in the local Universe, as measured using stellar and nebular abundances, can be used as a diagnostic to differentiate dwarf-like and Milky Way-like chemical enrichment patterns (McWilliam 1997; Venn et al. 2004; Tolstoy et al. 2009; Berg et al. 2019b). While similar arguments have been made for subDLAs and DLAs by comparing  $[\alpha/\text{Fe}]$ ,  $[\text{C}/\text{O}]$ ,  $[\text{Zn}/\text{Fe}]$ , and  $[\text{Mn}/\text{Fe}]$  to stellar abundances measured in the Local Group (Meiring et al. 2009; Rafelski et al. 2012; Som et al. 2013; Berg et al. 2015b; Cooke, Pettini & Steidel 2017; Skúladóttir et al. 2017), separating nucleosynthetic patterns from the effects of dust depletion (Pettini et al. 1997; Vladilo et al. 2001; Berg et al. 2015b; De Cia et al. 2018), ionization corrections (ICs; Vladilo et al. 2001; Dessauges-Zavadsky et al. 2009; Milutinovic et al. 2010), and absorber selection effects remains a challenge, particularly for subDLAs.

Here, we present the chemical abundances of a blind sample of 155 H I-selected subDLAs across redshifts  $2.4 < z_{\text{abs}} < 4.3$ , as identified in the XQ-100 survey (López et al. 2016). In a previous

paper (Berg et al. 2019a), we have assessed the contribution of subDLAs to the cosmic H I budget, finding that they contribute 10–20 per cent at  $2.4 < z_{\text{abs}} < 4.3$ . In this paper, we present metal column density measurements of these absorbers in order to quantify the contribution of subDLAs to the chemical enrichment of the Universe. Throughout this paper, we assume a flat  $\Lambda$ CDM Universe with  $H_0 = 70.0 \text{ km s}^{-1} \text{ Mpc}^{-1}$  and  $\Omega_{\text{m},0} = 0.3$ .

## 2 DATA

### 2.1 XQ-100 survey design and data

The XQ-100 Legacy Survey (López et al. 2016) observed 100 QSO sightlines between redshifts  $3.5 \leq z_{\text{em}} \leq 4.5$  with the X-Shooter Spectrograph (Vernet et al. 2011) on the Very Large Telescope (VLT). Each QSO was observed for  $\approx 0.5$  or  $\approx 1$  h based on the QSO’s brightness; providing a median signal-to-noise ratio of  $\approx 30$  per pixel. The survey was designed for multiple science cases; from studying the associated absorbers near QSOs (Perrotta et al. 2016, 2018) to characterizing the Ly  $\alpha$  forest (Iršič et al. 2017a, b). As the QSOs were purposefully chosen to be blind to any intervening absorption line systems, the XQ-100 data set provides a randomly selected sample of subDLAs and DLAs to assess their cosmological contribution to the evolution of neutral gas at redshifts modestly probed in past surveys (Sánchez-Ramírez et al. 2016; Berg et al. 2016a, 2017, 2019a; Christensen et al. 2017). Details about the XQ-100 survey design and data reduction are summarized in López et al. (2016).

The XQ-100 absorber catalogue consists of 155 subDLAs and 43 DLAs (Sánchez-Ramírez et al. 2016; Berg et al. 2019a). In brief, the absorbers were visually identified in the XQ-100 spectra by searching for simultaneous Ly  $\alpha$ , Ly  $\beta$ , and Ly  $\gamma$  absorption consistent with simulated Voigt profiles of column density of  $\log N(\text{H I}) \geq 19.0$ . The search for subDLA Ly  $\alpha$  absorption was truncated bluewards of the observed-frame wavelength corresponding to the Lyman limit of the QSO due to the lack of continuum to properly fit any Ly  $\alpha$  absorption. H I column densities and absorption redshifts ( $z_{\text{abs}}$ ) for the identified systems were measured by simultaneously fitting the continuum and Voigt profiles to the corresponding absorption for several Lyman series lines (typically Ly  $\alpha$ , Ly  $\beta$ , Ly  $\gamma$ , and Ly  $\delta$ ). For more details about the identification and H I properties of the XQ-100 subDLAs, see Berg et al. (2019a).

With the increasing density of Lyman series absorption towards bluer wavelengths, there is an increasing chance of false-positive identification of  $\log N(\text{H I}) \lesssim 19.4$ ,  $z_{\text{abs}} \lesssim 3.2$  subDLAs due to blending of lower column density systems. Although using the presence of metal lines to remove false positives is common practice in the literature, the method introduces potential metallicity biases by preferentially removing low metallicity systems. Given the resolution and signal-to-noise ratio of the XQ-100 data, requiring the presence of metal lines would potentially remove systems with  $[\text{M}/\text{H}] \lesssim -2$  from the sample. Furthermore,  $\approx 40$  per cent of the subDLAs identified in Berg et al. (2019a) have the commonly identified C IV and Si IV in blended or noisy regions, which can also produce selection effects at various redshifts when these key metal lines shift into the Ly  $\alpha$  forest.

To provide an upper and lower limit on the true distribution of subDLAs within the XQ-100 survey, we follow the method outlined in Berg et al. (2019a) and split the XQ-100 subDLA absorbers into two samples: the full catalogue of subDLAs (abbreviated FS; 155 subDLAs) and those with at least one confirmed detection of a metal species from the method outlined in Section 2.2 (referred to as the

**Table 1.** XQ-100 subDLA ion detection statistics.

Ion	$n_{\text{det}}$	$n_{\text{covered}}$	$f_{\text{det}}$
Al II	37	123	0.30
Al III	4	109	0.04
C I	0	120	0.00
C II	26	35	0.74
C IV	61	101	0.60
Ca I	0	87	0.00
Ca II	0	72	0.00
Cr II	0	124	0.00
Fe II	29	152	0.19
Mg I	0	43	0.00
Mg II	39	89	0.44
Mn II	0	104	0.00
Ni II	0	143	0.00
O I	21	31	0.68
S II	0	11	0.00
Si II	45	136	0.33
Si III	0	107	0.00
Si IV	38	56	0.68
Ti II	0	102	0.00
Zn II	0	124	0.00

metal-selected sample, MS, see Table 3; 80 systems). Throughout the paper, we remove all proximate absorbers to the host QSO (i.e. absorbers whose  $z_{\text{abs}}$  is within  $5000 \text{ km s}^{-1}$  of the QSO's redshift), as proximate systems have been shown to have different metal abundance patterns and ionization conditions (Ellison et al. 2002, 2010; Ellison, Prochaska & Mendel 2011; Berg et al. 2016a; Perrotta et al. 2016).

## 2.2 Metal column density measurements

For each subDLA in the XQ-100, we searched for absorption corresponding to the 20 species presented in Table 1 within  $\pm 250 \text{ km s}^{-1}$  of the H I absorption redshift  $z_{\text{abs}}$  where there is sufficient signal-to-noise ratio ( $\text{snr} \gtrsim 5 \text{ pixel}^{-1}$ ) and little contamination from saturated or broad absorption features (such as the Ly $\alpha$  forest or telluric lines). Gas-phase metal column densities were measured using the continuum-normalized spectrum presented in López et al. (2016). For detected absorption lines, column densities were estimated using the apparent optical depth method (AODM; Savage & Sembach 1991). In brief, the AODM uses the integrated optical depth ( $\tau$ ) across an unsaturated absorption line to estimate the column density  $N$ , i.e.

$$N = \frac{m_e c}{\pi e^2 f \lambda} \int_{v_{\text{min}}}^{v_{\text{max}}} \tau dv, \quad (1)$$

where  $m_e$  and  $e$  are the electron mass and charge, respectively,  $c$  is the speed of light, and  $f$  and  $\lambda$  are, respectively, the oscillator strength and rest-frame wavelength of the atomic transition being measured (taken from Morton 2003). For each subDLA, the velocity bounds  $v_{\text{min}}$  and  $v_{\text{max}}$  used for the AODM column density derivation were selected to encompass the full range of absorption of the strongest metal line detected in the system. However, if any absorption not associated with the system was present in a region associated with clean continuum or lengthy regions of clean continuum and minimal absorption, the velocity bounds were reduced to encompass only the observed, associated absorption. On rare occasions, we also shrunk the velocity bounds to avoid substantial blending to provide a more accurate lower limit on the column density.

Due to the modest resolution of X-Shooter ( $R = 5100, 8800, \text{ and } 5300$  for the UVB, VIS, and NIR arms, respectively), it is possible

that there is unseen contamination or saturation that would lead to incorrect AODM measurements. Following previous studies using X-Shooter and similar resolution spectrographs (Prochaska et al. 2015; Berg et al. 2016a; Krogager et al. 2016), we conservatively flagged the line as a lower limit if the strongest absorption component dropped below a continuum-normalized flux of 0.5 unless a weaker absorption line of the same species could confirm the measured column density is accurate. Additionally, any absorption containing some blending was flagged as an upper limit.

If no absorption was detected for the metal species, we derive a  $3\sigma$  upper limit assuming the metal absorption line is an unresolved single component with a full width at half-maximum (FWHM) equal to the instrument resolution (Pettini et al. 1994). The resulting column density limit is given by

$$N = \frac{3m_e c^2 \text{FWHM}}{\pi e^2 f \lambda^2 (1 + z_{\text{abs}}) \text{snr}}, \quad (2)$$

where the FWHM corresponds to the resolution (measured in the same units as  $\lambda$ ) of the corresponding X-Shooter arm and snr is the average signal-to-noise ratio (per pixel) of the continuum within the velocity bounds for the AODM measurement. Note that the measured snr and thus the column density upper limits are sensitive to continuum level (Berg et al. 2016a). Errors on the AODM are derived using the variance obtained from the corresponding error spectrum. For marginally detected absorption lines, we demand a  $5\sigma$  detection to be considered as a detection. Anything below this threshold, we adopt the  $3\sigma$  upper limit instead, unless a stronger line from the same species could confirm the detected AODM column density is accurate. Through visually inspecting the data, we confirmed that requiring a  $5\sigma$  detection for our sample only removes uncertain cases where small dips in the continuum close to the expected absorption can be consistent with noise.

The column density for each absorption line is tabulated in Table 2 (full version of Table 2 is available online), along with the corresponding AODM velocity bounds, and flag indicating whether the absorption is adopted (+1), saturated or a lower limit (+2), undetected (+4), or blended (+8). Note that these flags can be combined, such that lines that are both blended and saturated would have a flag of +10. For reference, Table 1 summarizes the number of subDLAs where: the species is detected (including both unsaturated and saturated absorption;  $n_{\text{det}}$ ), and there is sufficient data quality to obtain a reliable column density or upper limit measurement ( $n_{\text{covered}}$ ). The frequency of metal line detections for species ( $f_{\text{det}} = \frac{n_{\text{det}}}{n_{\text{covered}}}$ ) is also provided in Table 1. Fig. A1 provides the absorption line profiles in each subDLA (only metal species with  $f_{\text{det}} > 0$ ).

Following our previous metal column density measurements for the XQ-100 DLAs (Berg et al. 2016a), the final adopted column density ( $N_{\text{adopt}}$ ) for each ion was computed using the following criteria:

- (i) If only one transition line has a flag of +1, the corresponding column density is adopted.
- (ii) If multiple transition lines of a given ionization species have a flag of +1, the error-weighted average column density using all cleanly detected lines is taken. The error on the adopted column density is computed using the standard deviation of the column densities. Note that the errors on individual column density measurements are typically much smaller than the difference in column densities measured.
- (iii) If there are no transition lines with a flag of +1, but the difference between the most constraining upper and lower limits on

**Table 2.** XQ-100 subDLA metal column densities (shown for one absorber; full version online).

QSO	$z_{\text{abs}}$	Ion	$\lambda$ (Å)	$v_{\text{min}}$ (km s <sup>-1</sup> )	$v_{\text{max}}$ (km s <sup>-1</sup> )	$\log(N)$ log(atoms cm <sup>-2</sup> )	Flag	$\log(N_{\text{adopt}})$ log(atoms cm <sup>-2</sup> )	$\log(N_{\text{adopt}} + \text{IC})$ log(atoms cm <sup>-2</sup> )
J0003–2603	3.05490	Al II	1670	-100	100	<11.53	+5	–	–
J0003–2603	3.05490	Al II	–	–	–	–	+5	<11.53	< 12.26 <sup>+0.05</sup> <sub>-0.05</sub>
J0003–2603	3.05490	Al III	1854	-100	100	<11.65	+5	–	–
J0003–2603	3.05490	Al III	1862	-100	100	<12.09	+4	–	–
J0003–2603	3.05490	Al III	–	–	–	–	+5	<11.65	< 12.34 <sup>+0.05</sup> <sub>-0.05</sub>
J0003–2603	3.05490	C IV	1548	-275	-15	13.02 ± 0.03	+1	–	–
J0003–2603	3.05490	C IV	1550	-275	-25	13.14 ± 0.04	+1	–	–
J0003–2603	3.05490	C IV	–	–	–	–	+1	13.08 ± 0.05	14.22 <sup>+0.06</sup> <sub>-0.06</sub>
J0003–2603	3.05490	Ca I	2276	-100	100	<12.62	+4	–	–
J0003–2603	3.05490	Ca I	4227	-100	100	<10.93	+5	–	–
J0003–2603	3.05490	Ca I	–	–	–	–	+5	<10.93	< 12.19 <sup>+0.06</sup> <sub>-0.06</sub>
J0003–2603	3.05490	Ca II	3934	-100	100	<11.76	+5	–	–
J0003–2603	3.05490	Ca II	3969	-100	100	<12.26	+4	–	–
J0003–2603	3.05490	Ca II	–	–	–	–	+5	<11.76	< 12.31 <sup>+0.05</sup> <sub>-0.05</sub>
J0003–2603	3.05490	Cr II	2056	-100	100	<12.25	+5	–	–
J0003–2603	3.05490	Cr II	2062	-100	100	<12.57	+4	–	–
J0003–2603	3.05490	Cr II	2066	-100	100	<12.65	+4	–	–
J0003–2603	3.05490	Cr II	–	–	–	–	+5	<12.25	< 12.31 <sup>+0.01</sup> <sub>-0.01</sub>
J0003–2603	3.05490	Fe II	1608	-100	100	<12.77	+4	–	–
J0003–2603	3.05490	Fe II	2586	-70	70	12.64 ± 0.17	+1	–	–
J0003–2603	3.05490	Fe II	2600	-70	70	12.51 ± 0.06	+1	–	–
J0003–2603	3.05490	Fe II	–	–	–	–	+1	12.57 ± 0.06	13.34 <sup>+0.06</sup> <sub>-0.06</sub>
J0003–2603	3.05490	Mn II	2576	-100	100	<11.89	+5	–	–
J0003–2603	3.05490	Mn II	2594	-100	100	<12.08	+4	–	–
J0003–2603	3.05490	Mn II	2606	-100	100	<12.30	+4	–	–
J0003–2603	3.05490	Mn II	–	–	–	–	+5	<11.89	< 11.97 <sup>+0.01</sup> <sub>-0.01</sub>
J0003–2603	3.05490	Ni II	1709	-100	100	<13.25	+4	–	–
J0003–2603	3.05490	Ni II	1751	-150	50	<13.07	+5	–	–
J0003–2603	3.05490	Ni II	–	–	–	–	+5	<13.07	< 13.10 <sup>+0.01</sup> <sub>-0.01</sub>
J0003–2603	3.05490	Ti II	3073	-100	100	<12.25	+5	–	–
J0003–2603	3.05490	Ti II	3242	-100	100	<12.30	+4	–	–
J0003–2603	3.05490	Ti II	–	–	–	–	+5	<12.25	< 12.26 <sup>+0.00</sup> <sub>-0.00</sub>
J0003–2603	3.05490	Zn II	2026	-100	100	<11.67	+5	–	–
J0003–2603	3.05490	Zn II	2062	-100	100	<12.00	+4	–	–
J0003–2603	3.05490	Zn II	–	–	–	–	+5	<11.67	< 11.69 <sup>+0.00</sup> <sub>-0.00</sub>

the column density is <0.4 dex, the average of the two constraining column densities is taken. The error in the adopted column density is replaced by half the difference between the corresponding limits.

(iv) If there are no transition lines with a flag of +1, the most constraining limit is adopted. If there is both an upper and lower limit, the upper limit is preferentially adopted (unless the conditions of step iii are met).

We adopt a minimum error on  $N_{\text{adopt}}$  of 0.05 dex to account for errors in the continuum placement as was measured using multiple continuum fits to the XQ-100 quasars (Berg et al. 2016a).

### 2.3 Metallicities and ionization modelling

To enable the comparison of the gas-phase metallicity evolution between subDLAs and DLAs, we adopt the same method as previous studies (Rafelski et al. 2012, 2014; Quiret et al. 2016) that choose a single low ionization species to represent the total gas-phase metallicity of the system ( $[M/H]$ ), with preference for volatile elements to avoid effects of dust depletion. Following Quiret et al. (2016), we adopt the following ion abundance in decreasing order of preference (for both DLAs and subDLAs): Zn II, O I, S II, Si II, Mg II, Fe II, and Ni II. Note that Zn II and S II lines are not detected in the XQ-100 subDLA sample, but upper limits for these two ions are used.

The gas-phase metallicity for all the XQ-100 subDLAs following this method is tabulated in Table 3, and assume the Asplund et al. (2009) solar abundances.

Although the described method works well for DLAs due to the presence of self-shielded gas, it is unclear for a given subDLA how much of the material is ionized to a higher state from the UV background radiation, as corrections typically range between  $\approx 0$  and 0.7 dex (Dessauges-Zavadsky et al. 2003; Milutinovic et al. 2010). To account for these ionization effects in this work, we used the same method as Crighton et al. (2015) and Fumagalli et al. (2016) to run Markov chain Monte Carlo (MCMC) modelling on each subDLA to estimate an ionization-corrected gas-phase metallicity ( $[M/H]_{\text{IC}}$ ). In brief, the MCMC modelling method uses a grid of CLOUDY models (version 17; Ferland et al. 2017) that maps each set of CLOUDY input parameters (gas density, HI column density, redshift, and  $[M/H]_{\text{IC}}$ ) to the corresponding column densities of all metal ions that we considered in this work. The MCMC sampler searches this input parameter space for models with the column density pattern that best matches the HI and metal ion column densities measured (excluding C I as it probes cold gas), including lower and upper limits. The output of the MCMC modelling is a probability distribution of the independent sets of input parameters that can best match the observed column densities. In this paper, we adopt the minimal model parameters of Fumagalli et al. (2016) that assume a single

**Table 3.** XQ-100 subDLA metallicities (full version online).

QSO	$z_{\text{abs}}$	$\log N(\text{H I})$ (atoms $\text{cm}^{-2}$ )	[M/H]	[M/H] ion	[M/H] <sub>IC</sub>	$\log(n_{\text{H}})$ ( $\text{cm}^{-3}$ )	Sample
J0003–2603	2.78140	$19.00 \pm 0.20$	$< -2.68$	Mg II	$-3.83^{+0.57}_{-0.45}$	$-1.17^{+1.45}_{-2.04}$	FS
J0003–2603	3.05490	$20.00 \pm 0.15$	$-2.88 \pm 0.16$	Fe II	$-3.31^{+0.12}_{-0.12}$	$-2.80^{+0.08}_{-0.08}$	MS
J0006–6208	3.45890	$19.30 \pm 0.20$	$< -2.54$	Mg II	$-3.68^{+0.56}_{-0.55}$	$-1.39^{+1.62}_{-2.00}$	FS
J0034+1639	2.99540	$19.00 \pm 0.15$	$< 0.57$	Zn II	$-3.57^{+0.83}_{-0.62}$	$-1.04^{+1.38}_{-2.12}$	FS
J0034+1639	3.02170	$19.30 \pm 0.15$	$< 0.60$	Zn II	$-3.59^{+0.75}_{-0.61}$	$-1.15^{+1.45}_{-2.01}$	FS
J0034+1639	3.22750	$19.80 \pm 0.15$	$< -0.33$	Zn II	$-3.83^{+0.48}_{-0.45}$	$-0.97^{+1.31}_{-1.25}$	FS
J0034+1639	3.75350	$20.25 \pm 0.15$	$-1.73 \pm 0.16$	Si II	$-2.22^{+0.13}_{-0.12}$	$-2.70^{+0.13}_{-0.08}$	MS
J0034+1639	3.82470	$19.00 \pm 0.20$	$< 0.73$	Zn II	$-3.46^{+0.87}_{-0.70}$	$-0.70^{+1.14}_{-1.36}$	FS
J0034+1639	4.22715	$19.60 \pm 0.20$	$< -3.28$	Si II	$-3.68^{+0.13}_{-0.10}$	$-4.40^{+0.29}_{-0.07}$	MS
J0042–1020	2.75482	$20.10 \pm 0.15$	$> -1.35$	Mg II	$-1.09^{+0.17}_{-0.23}$	$-4.38^{+0.22}_{-0.09}$	MS

phase slab of gas at constant gas density ( $n_{\text{H}}$ ) illuminated on one side by both the Haardt & Madau (2012) UV and the cosmic microwave backgrounds. All metals are assumed to be in the gas phase with a solar abundance pattern of Asplund et al. (2009). We refer the reader to Fumagalli et al. (2016) for a thorough assessment of the model and its implications for CGM gas.

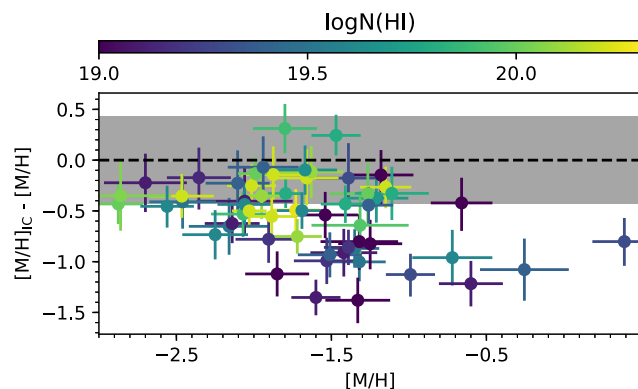
For each subDLA, the input priors include the measured  $N(\text{H I})$  and error,  $z_{\text{abs}}$  (assuming an error of 0.001), and all adopted metal column densities with their corresponding errors. The precision of the estimated output parameters depends on how many column density measurements are provided to constrain the sampled models. In Table 3 (full version online), we report the values of the ionization-corrected gas-phase metallicity ( $[\text{M}/\text{H}]_{\text{IC}}$ ) and gas density corresponding to the median of the probability distribution function (PDF) and the  $1\sigma$  percentiles errors derived from the MCMC analysis. We note that for the candidate subDLAs where no metals are detected (Section 2.1), the MCMC modelling of the  $[\text{M}/\text{H}]_{\text{IC}}$  is only constrained by upper limits on a couple of key metal lines. In these cases, the MCMC modelling is poorly constrained and it is thus possible that the true metallicity of the subDLA is below the minimum metallicity of the CLOUDY grid ( $[\text{M}/\text{H}]_{\text{IC}} < -4$ ). Although we include the output from the MCMC modelling in Table 3 for these poorly constrained systems, we caution the user that the corresponding  $[\text{M}/\text{H}]_{\text{IC}}$  is potentially upper limits to the true metallicity.

The resulting difference between  $[\text{M}/\text{H}]$  and  $[\text{M}/\text{H}]_{\text{IC}}$  for all the metal-selected sample is shown in Fig. 1, as a function of both  $[\text{M}/\text{H}]$  and  $\log N(\text{H I})$  (as shown by the colour of the points). As expected, the largest differences between  $[\text{M}/\text{H}]$  and  $[\text{M}/\text{H}]_{\text{IC}}$  occur more frequently at  $\log N(\text{H I}) \lesssim 19.6$ , where the effects of self-shielding are lost (Zheng & Miralda-Escudé 2002).

We also estimate ICs on the column densities for each ion by comparing the measured column density to the total column density of all ionization states within a CLOUDY model ( $N_{\text{c}}(X)$ ). For ion  $X_i$ , the corresponding IC to the column density  $[\text{IC}(X_i)]$  is defined as

$$\text{IC}(X_i) = N_{\text{c}}(X) - N(X_i). \quad (3)$$

Using the marginalized PDFs of CLOUDY models from the MCMC modelling of each system to obtain a distribution of  $N_{\text{c}}(X)$  values, we adopt the median and  $1\sigma$  percentiles of the resulting  $\text{IC}(X_i)$  distribution for each system as the IC and error for every species. The ionization-corrected column densities  $[\log(N + \text{IC})]$  and associated errors are provided in Table 2 only for systems with detected metals (i.e. within the MS). Note that the IC PDFs in this work are consistent with the range of ICs derived for other subDLAs in previous works that use CLOUDY (e.g. Dessauges-Zavadsky et al. 2003; Milutinovic



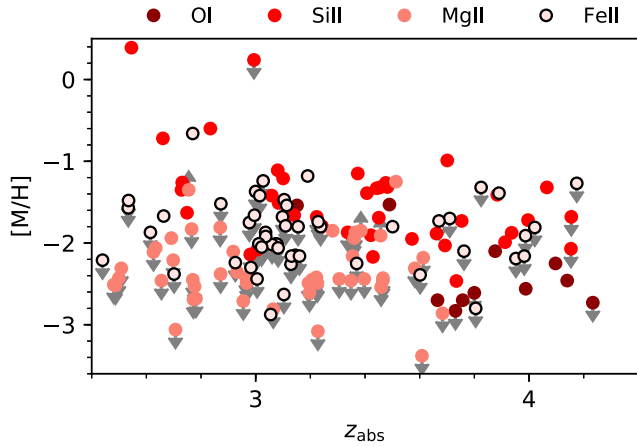
**Figure 1.** The difference between the metallicities measured using the MCMC modelling ( $[\text{M}/\text{H}]_{\text{IC}}$ ) and using a single representative ion ( $[\text{M}/\text{H}]$ ) as a function of  $[\text{M}/\text{H}]$ . Points are colour coded by their H I column density. The grey band spans the median error in the metallicity difference, such that any points outside the grey band imply a large IC is likely required.

et al. 2010; Battisti et al. 2012; Som et al. 2015). We emphasize that differences in the IC PDFs will arise when a particular ion (or set of ions) is used, especially if the selected ion(s) traces a particular ionization state of the gas, as our statistical approach combines all available ionization species. Below we discuss the effects of combining multiple ionization states on the derived ICs (Section 2.3.2).

### 2.3.1 Effects of dust depletion

The depletion of gas on to dust grains plagues metallicity measurements in QSO absorber analyses, as a component of the total metal content is missed. Such an effect is suspected to have an impact on the total metallicity evolution of subDLAs and DLAs (De Cia et al. 2018; Krogager et al. 2019; Poudel et al. 2020). Corrections for dust depletion can be computed, but require the detection of multiple chemical elements in the absorber to either model the physical and chemical properties (Jenkins 2009; De Cia et al. 2016) or measure abundance ratios of elements with similar nucleosynthetic origins (Berg et al. 2015a). For the XQ-100 subDLAs, there are insufficient detections of multiple elements to appropriately model the dust depletion in these systems.

In such cases, the most appropriate course of action is to use available volatile metal tracers to measure the metallicity (Rafelski et al. 2012). As described above, we implemented such a strategy to measure  $[\text{M}/\text{H}]$ . Fig. 2 shows the XQ-100 subDLAs  $[\text{M}/\text{H}]$  as a



**Figure 2.** The  $[M/H]$  of the XQ-100 subDLAs as a function of redshift. Each point is coloured by what ion was used to determine  $[M/H]$  (O I as dark red, Si II as red, Mg II as light red, and Fe II as outlined circles) such that the darker the point the more volatile the ion that was used to measure  $[M/H]$ .

function of redshift, colour coded by the ion used. The colour coding was chosen such that volatile elements are darker than refractory elements. From Fig. 2 it is evident that there are clear selection effects as a function of redshift in what ion is chosen to measure  $[M/H]$  in the XQ-100 subDLAs. For example, systems that have  $[M/H]$  estimated by O I are preferentially found at higher redshifts. This is likely due to a combination of absorbers being more metal poor on average at high redshifts (and thus the strong O I 1302 Å is not saturated) and the line is often found outside of the Ly  $\alpha$  forest given the XQ-100 QSO redshifts. On the other hand, the more commonly observed refractory ions Si II and Fe II have a variety of wavelengths and oscillator strengths, making them easier to identify across all redshifts covered by the XQ-100 absorbers. Coupled with underestimates in  $[M/H]$  due to dust depletion, we note that using a single ion as a  $[M/H]$  tracer can lead to potential selection effects that complicate the interpretation of metallicity evolution.

In their MCMC ionization modelling, Fumagalli et al. (2016) experimented with changing the underlying solar abundance pattern by the Jenkins (2009) dust depletion pattern. From their experiment, Fumagalli et al. (2016) found that both the inferred ionization-corrected metallicity and gas density between their nominal and dust-depleted abundance patterns models are highly correlated, with strong metallicity differences at low redshifts and high metallicity ( $[M/H]_{IC} \gtrsim -1.0$ ). For the 85 subDLAs in the Fumagalli et al. (2016) sample that match the redshift and metallicity range of the XQ-100 subDLAs, the median  $[M/H]_{IC}$  offset (with  $\pm 1\sigma$  percentile confidence intervals) after including the effects of dust depletion is  $0.00^{+0.10}_{-0.06}$ . Note that for the majority of the absorbers in Fumagalli et al. (2016), the systematic offsets in  $[M/H]_{IC}$  after including dust depletion are much smaller than the error in the ionization modelling. We have not included any dust corrections to our derived  $[M/H]_{IC}$ . As we are using the same MCMC-based  $[M/H]_{IC}$  modelling as Fumagalli et al. (2016), we expect the effects of including dust depletion and/or nucleosynthesis in the ionization modelling to be equally similar for the XQ-100 sample and expect the same statistical systematic offsets of  $0.00^{+0.10}_{-0.06}$  to apply for the XQ-100 subDLAs.

### 2.3.2 Effects of ionization assumptions

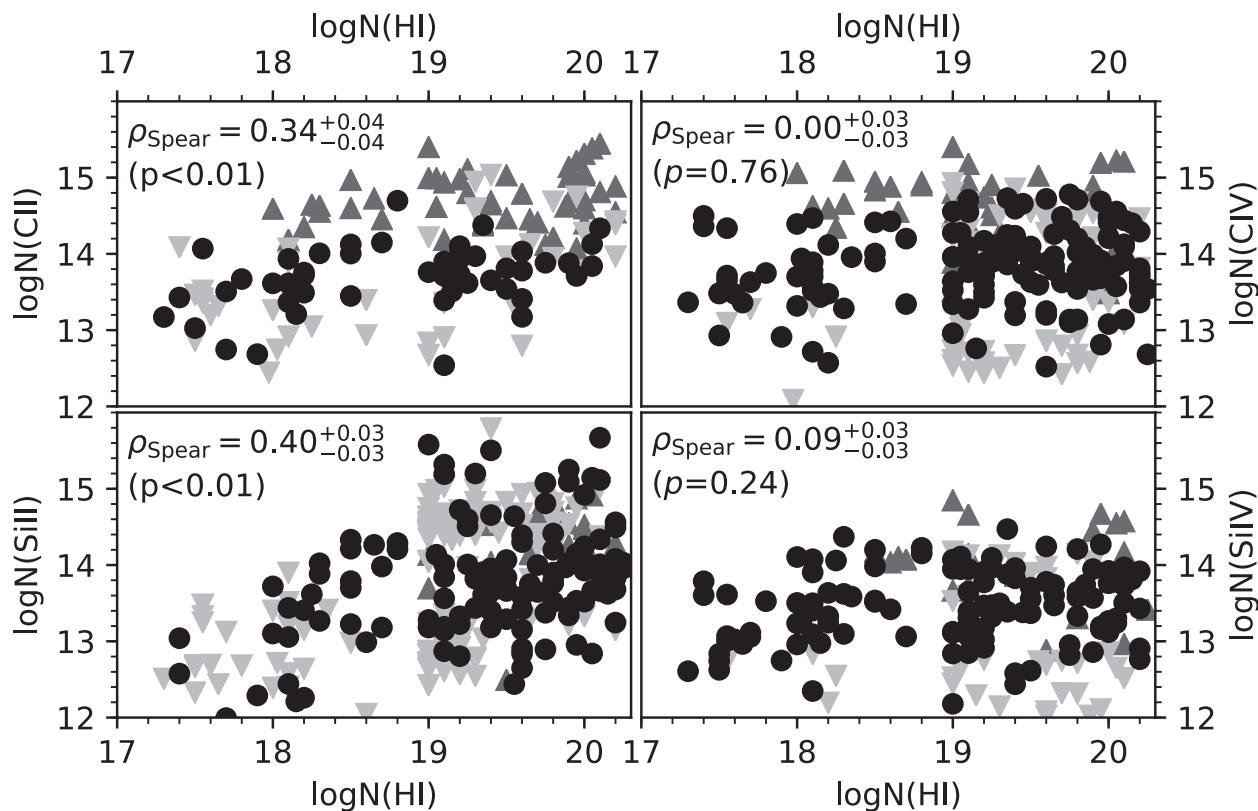
While we assume a typical QSO absorption line model of a single phase medium in our CLOUDY modelling, it is possible that the

subDLAs probe multiphase gas or gas exposed to a local stellar radiation source. For example, the lack of correlation in column density of high ionization species (e.g. C IV and Si IV) across more than three orders of magnitude in  $N(H I)$  can potentially be explained as a kinematically distinct outer shell of CGM-like material surrounding the increasing amount of neutral, ISM-like gas within a galaxy (Fox et al. 2007; Milutinovic et al. 2010; Prochaska et al. 2015). For reference, Fig. 3 shows  $\log N(C IV)$  and  $\log N(Si IV)$  (top right and bottom right panels, respectively) as a function of  $\log N(H I)$  for Lyman Limit systems (LLS; QSO absorbers with  $17.0 \leq \log N(H I) < 19.0$ ) and subDLAs from XQ-100 and Prochaska et al. (2015). A Spearman-rank correlation test<sup>1</sup> demonstrates a lack of correlation of high ion column density with increasing  $N(H I)$ ;  $\rho_{Spear}$  and its associated p-value are shown in the respective panels of Fig. 3. For comparison, the low ion counterparts ( $\log N(C II)$  and  $\log N(Si II)$ ; top left and bottom left panels, respectively) show an increase in metal column with increasing  $\log N(H I)$  (with the null hypothesis that there is no correlation rejected at  $>3\sigma$  significance using a Spearman-rank correlation test, as previously seen by Jorgenson et al. 2013; Prochaska et al. 2015). Therefore, if there is indeed a multiphase structure to subDLA gas, it may not be appropriate to mix both high and low ions' states as constraints in the modelling.

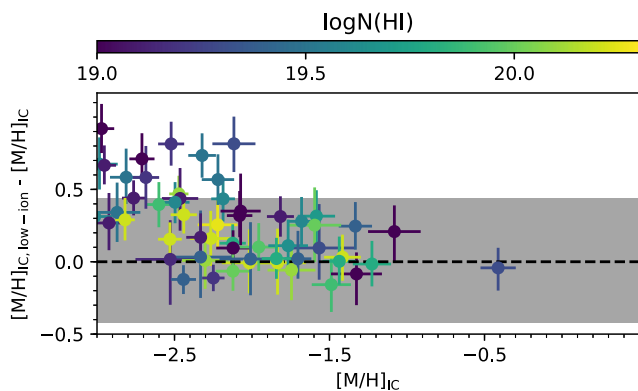
To test how much influence the high ion component has on the MCMC modelling, we reran our code assuming all  $\log N(C IV)$  and  $\log N(Si IV)$  measurements as upper limits, assuming only a portion of the high ion material is co-existent with the low ionized species. Fig. 4 shows the difference in the gas-phase metallicity measured when treating  $\log N(C IV)$  and  $\log N(Si IV)$  as upper limits ( $[M/H]_{IC, low ion}$ ) relative to the original run ( $[M/H]_{IC}$ ), as a function of  $[M/H]_{IC}$  and  $\log N(H I)$  (represented by the colour of the points). Note that the absorbers shown in these plots represent a biased subset of the subDLAs, in that they must also have a detection (including lower limits) of at least one low ionization species to be able to properly assess  $[M/H]_{IC, low ion}$ . Comparing to the typical error in  $[M/H]_{IC}$  (grey band in both panels of Fig. 4), subDLAs with  $\log N(H I) \lesssim 19.5$  and  $[M/H]_{IC} \lesssim -2$  tend to have underestimated metallicities when assuming a single phase, and potentially need to be modelled with a multiphase prescription. However, many of these systems with large offsets in  $[M/H]_{IC, low ion} - [M/H]_{IC}$  have  $[M/H]_{IC, low ion}$  constrained only by either a single ion's column density or rely solely on lower limits on the metal column densities, leading to highly uncertain ICs (see discussion above). Despite this systematic increase in the gas-phase metallicity from assuming a multiphase medium, we emphasize that when including this affect in the results presented in Section 3, our conclusions remain consistent within the  $1\sigma$  scatter of the measurements from assuming a single phase, and thus do not change our interpretations.

We also reran our MCMC modelling with the inclusion of a galaxy radiation component on top of the UV background. We used the same local galaxy source models as described in Fumagalli et al. (2016), using an updated model grid with the same resolution as the minimal model. In brief, the galaxy source term in our models was derived using a STARBURST99 (Leitherer et al. 1999) galaxy model undergoing a continuous star formation rate of  $1 M_{\odot} \text{ yr}^{-1}$ , at a fixed

<sup>1</sup>The Spearman-rank correlation parameter ( $\rho_{Spear}$ ) was computed using a Monte Carlo simulation of 10 000 iterations by varying each data point within its Gaussian errorbars. Limits on column densities are varied uniformly between their measured value and  $\pm 1$  dex from the limiting value (depending on the limit type). The results are consistent irrespective of treating the limits as assumed detections.

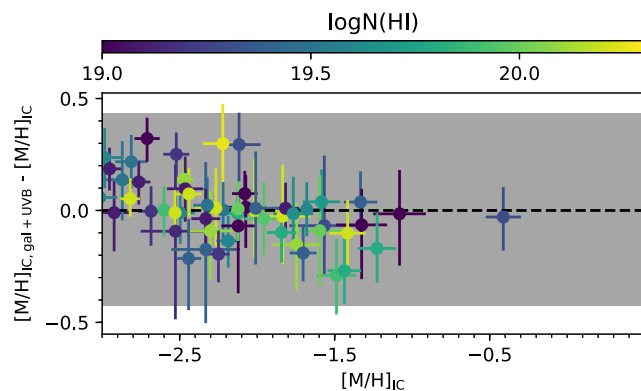


**Figure 3.** The metal column density of four commonly observed species (C II, Si II, C IV, Si IV; top left, bottom left, top right, and bottom right, respectively) as a function of  $\log N(\text{H I})$  for LLSs and subDLAs from XQ-100 and Prochaska et al. (2015). Upper and lower limits are denoted by the light and dark grey triangles (respectively), while clean detections are shown as black circles. The Spearman-rank correlation parameters ( $\rho_{\text{Spear}}$ ) and its  $1\sigma$  confidence intervals, and associated p-values are shown in the top left corner of each panel. It is clear from the Spearman-rank correlation tests that there is no evidence of correlation of  $\log N(\text{C IV})$  nor  $\log N(\text{Si IV})$  with  $\log N(\text{H I})$ , but a modest correlation exists for C II and Si II.



**Figure 4.** The relative difference in the gas-phase metallicity measured upon treating  $\log N(\text{C IV})$  and  $\log N(\text{Si IV})$  as upper limits ( $[\text{M}/\text{H}]_{\text{IC, low ion}}$ ) relative to the original run ( $[\text{M}/\text{H}]_{\text{IC}}$ ). The difference in metallicity is shown as a function of  $[\text{M}/\text{H}]_{\text{IC}}$ , with the points colour coded by their H I column density. The shaded grey band shows the region in which the measured difference is consistent within the typical 17th and 83rd percentiles of the  $[\text{M}/\text{H}]_{\text{IC}}$  distribution, while the error bars on the individual points represent the same percentile range for the individual system. SubDLAs with  $\log N(\text{H I}) \lesssim 19.5$  and  $[\text{M}/\text{H}]_{\text{IC}} \lesssim -2$  are the only systems that are significantly sensitive to a multiphase prescription.

distance from the slab of gas. The distance of the source to the gas slab is accounted for by varying the flux of the stellar radiation term within the MCMC ionization modelling. Similar to Fig. 4, Fig. 5 shows the relative difference in  $[\text{M}/\text{H}]_{\text{IC}}$  when including the stellar radiation



**Figure 5.** The relative difference in the gas-phase metallicity measured upon including a stellar radiation component ( $[\text{M}/\text{H}]_{\text{IC, gal + UVB}}$ ) relative to the original run with only the extragalactic UV background ( $[\text{M}/\text{H}]_{\text{IC}}$ ). The notation of this figure is the same as Fig. 4. There appears to be no significant effect of including a stellar component in the CLOUDY modelling.

component ( $[\text{M}/\text{H}]_{\text{IC, gal + UVB}}$ ) to the fiducial  $[\text{M}/\text{H}]_{\text{IC}}$  for the FS subDLAs. We remind the reader that, as with the low ionization modelling above, several systems are poorly constrained due to a lack of detection of metals, particularly those at low metallicity. Differences in metallicity for these systems are highly uncertain. As  $[\text{M}/\text{H}]_{\text{IC}}$  is predominantly constrained by the ionization parameter  $U \propto \phi n_{\text{H}}^{-1}$  (where  $\phi$  is the ionizing photon flux), the  $\lesssim 1\sigma$  difference between  $[\text{M}/\text{H}]_{\text{IC, gal + UVB}}$  and  $[\text{M}/\text{H}]$  for the bulk of the subDLAs

is suggestive that the metallicity and ICs are less sensitive to the inclusion of the stellar ionizing flux for the range of  $n_{\text{H}}$  probed (see also Fumagalli et al. 2016).

### 3 RESULTS

#### 3.1 Mean metallicity

Within a given redshift bin, we define the H I-weighted mean gas-phase metallicity ( $\langle Z/Z_{\odot} \rangle$ ) as

$$\langle Z/Z_{\odot} \rangle = \log \left( \frac{\sum_i N(\text{H}1)_i 10^{[\text{M}/\text{H}]_i}}{\sum_i N(\text{H}1)_i} \right), \quad (4)$$

where  $N(\text{H}1)_i$  and  $[\text{M}/\text{H}]_i$  are the respective  $N(\text{H}1)$  and metallicity of the  $i$ th subDLA in the redshift bin. To properly include both sampling and measurement errors in our computation of  $\langle Z/Z_{\odot} \rangle$ , we use a bootstrap-Monte Carlo (B-MC) resampling technique, as was implemented in Sánchez-Ramírez et al. (2016) and Berg et al. (2019a). In summary, for each iteration of the B-MC method, the measured  $[\text{M}/\text{H}]$  and  $\log N(\text{H}1)$  for each subDLA is varied within their errors (assuming a Gaussian distribution). Within each iteration, a mock XQ-100 subDLA sample (i.e. 150 systems) is then randomly selected from these varied measurements (with replacement). This process is repeated 10 000 times to create 10 000 simulated catalogues of absorbers.

We experimented with including and excluding  $[\text{M}/\text{H}]$  limits into the B-MC simulation by adopting a random metallicity from a uniform distribution of values between an arbitrary minimum or maximum metallicity (for upper or lower limits, respectively) and the limiting value. Given that there is no true metallicity floor or ceiling, the choice of these arbitrary bounds can affect the calculation of  $\langle Z/Z_{\odot} \rangle$ . We experimented with different metallicity floors ( $[\text{M}/\text{H}] = -3, -5, \text{ and } -7$ ) and ceilings ( $[\text{M}/\text{H}] = +0.25, +0.5, +0.75, \text{ and } +1.0$ ). Once the metallicity upper limits are included (rather than being ignored), there is a significant drop in the computed  $\langle Z/Z_{\odot} \rangle$  of XQ-100 by up to  $\approx -0.4$  dex. The choice of metallicity floor does not significantly affect  $\langle Z/Z_{\odot} \rangle$  ( $\lesssim 0.1$  dex differences comparing the metallicity floors of  $[\text{M}/\text{H}] = -3$  and  $-\infty$ ). We therefore include upper limits in our B-MC simulations following this methodology, using a metallicity floor of  $[\text{M}/\text{H}] = -7$  (in line with the most metal-poor stars known; e.g.  $[\text{Fe}/\text{H}] \approx -7$  from Keller et al. 2014). For lower limits, the choice of the maximum metallicity adopted has a significant impact on the  $\langle Z/Z_{\odot} \rangle$  by up to  $+0.25$  dex (assuming a ceiling of  $[\text{M}/\text{H}] \geq +1.0$ ; see thick and thin purple lines in the top panel of Fig. 6). Given that subDLAs and DLAs at such high metallicities are rarely observed (Rafelski et al. 2012; Berg et al. 2015b; Fumagalli et al. 2016; Quiret et al. 2016) and that the typical  $1\sigma$  variation in  $\langle Z/Z_{\odot} \rangle$  is  $\approx 0.3$  dex from measurement errors and sampling effects, we chose to exclude metallicity lower limits in our calculations as they should have little effect on the computation  $\langle Z/Z_{\odot} \rangle$ .

#### 3.2 Mean metallicity evolution of subDLAs

In order to compare the gas-phase metallicity evolution of subDLAs with DLAs, we applied the B-MC methodology to the XQ-100 subDLAs and a statistical DLA sample composed of DLAs from Rafelski et al. (2012, 2014) and the XQ-100 survey (Berg et al. 2016a). Given the uncertainty in the number of metal-poor subDLAs without metal line detections [i.e. absorbers only in the full sample (FS) catalogue], we also computed the mean gas-phase metallicity evolution of both the full and metal-selected subDLAs. To compute

the evolution of  $\langle Z/Z_{\odot} \rangle$  with redshift, we used a sliding bin technique, where  $\langle Z/Z_{\odot} \rangle$  is computed within redshift bin width of  $\Delta z_{\text{abs}} = 0.5$ . The bin is then moved in redshift increments of  $\delta z_{\text{abs}} = 0.05$  in order to finely sample the effects of absorbers being added and removed from the bin and remove effect from the choice of bins. The results using the sliding bin technique are broadly independent of the choice of  $\Delta z_{\text{abs}}$  and  $\delta z_{\text{abs}}$ , assuming reasonable values for these two parameters.

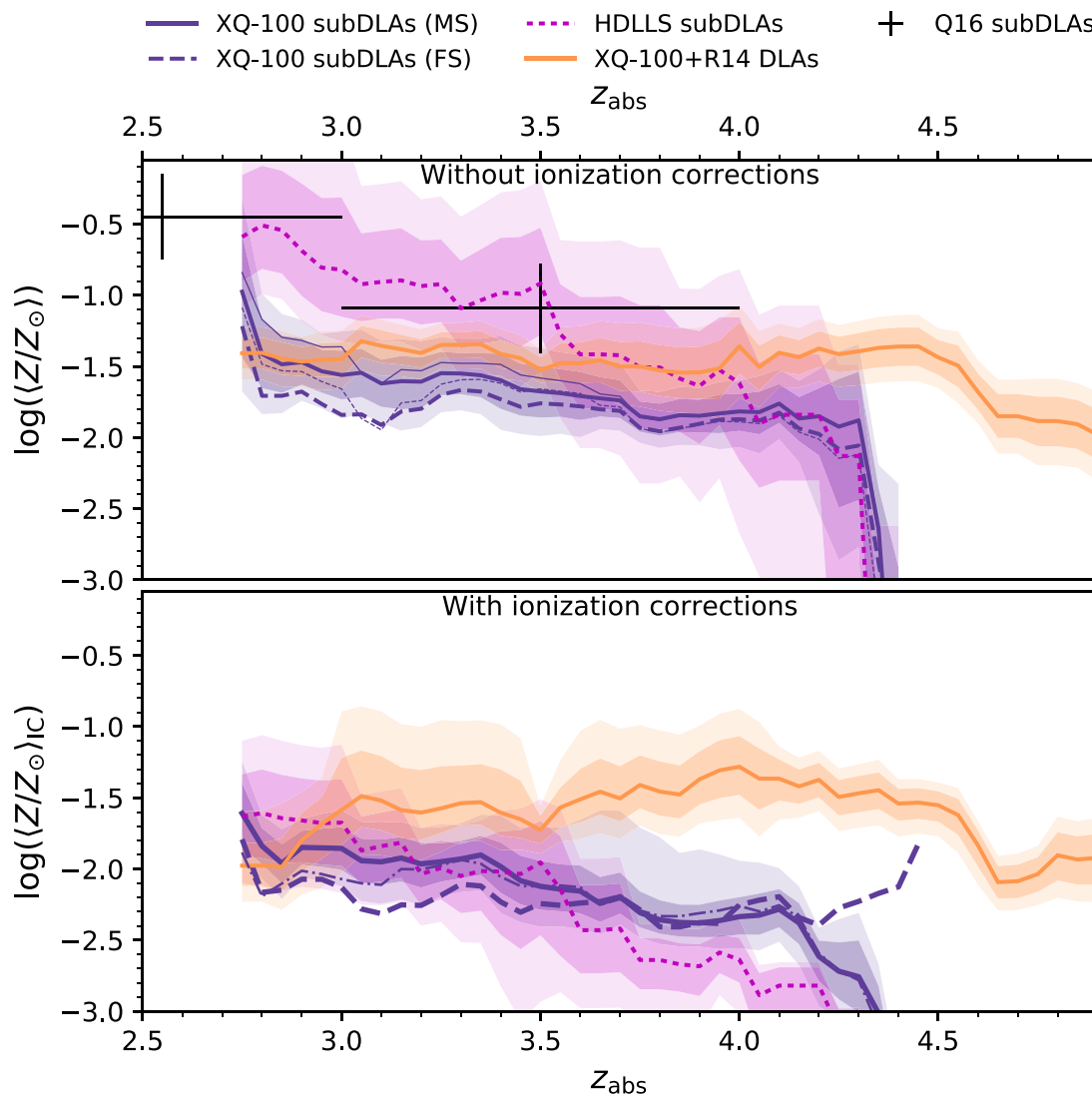
The top panel of Fig. 6 shows the median  $\langle Z/Z_{\odot} \rangle$  evolution for the subDLA (purple lines) and DLA (orange line) samples. The subDLA is split into the FS (solid purple line) and MS (dashed purple line). The darker and lighter shaded regions represent the 67 and 90 per cent confidence intervals (respectively) for the DLA and FS subDLAs.

To compare to previous subDLA studies over a similar redshift range, we also included the sample from the High Dispersion LLS survey (HD-LLS; Prochaska et al. 2015; Fumagalli et al. 2016, magenta dotted line, computed using the same B-MC method without ionization or dust corrections). In brief, the HD-LLS survey selected all absorbers (including subDLAs) from QSO sightlines targeted for H I absorption studies, with the subDLAs being identified solely based on the presence of H I. We also show the two high-redshift bins of the mean gas-phase metallicity for subDLAs from the ESO UVES Advance Data Products Quasar Sample (EUADP; Zafar et al. 2013; Quiret et al. 2016) as the black crosses. As the EUADP sample typically probes lower redshifts than XQ-100 or the HD-LLS surveys and the EUADP subDLAs were selected based on metal absorption lines, it is not possible to make a direct comparison to the EUADP sample. We point out that the sudden drop in gas-phase metallicity for subDLAs at  $z_{\text{abs}} \gtrsim 4.2$  is a consequence of a decreasing number of systems at these redshifts, and is likely not real.

There are three striking results in the top panel of Fig. 6. First, there appears to be very little difference in the gas-phase metallicity evolution between the XQ-100 subDLAs (either MS and FS) and DLAs, with both populations exhibiting an approximately constant H I-weighted gas-phase metallicity between  $2.7 \lesssim z_{\text{abs}} \lesssim 4.3$ . However, the subDLAs are systematically more metal poor on average than the DLAs by 0.2–0.3 dex (albeit at  $< 1\sigma$  significance) across the entire redshift range. The low metallicities that we find in  $z_{\text{abs}} > 3$  subDLAs contrast with  $z_{\text{abs}} \lesssim 3$  subDLAs, which have been previously found to have metallicities that are higher than DLAs (Péroux et al. 2008; Kulkarni et al. 2010; Som et al. 2015; Quiret et al. 2016). Our results are also in contrast with the HD-LLS subDLAs, which show a much steeper evolution, matching the high metallicities seen in the literature at  $z_{\text{abs}} \lesssim 3$ , but quickly dropping to the low metallicities traced by the XQ-100 subDLAs. The differences between the various samples could potentially be explained by at least one of the following issues: selection biases between the three subDLA samples, dust depletion, or ICs (Dessauges-Zavadsky et al. 2009). We discuss each of these in turn below.

##### 3.2.1 Sample selection effects

As pointed out in Section 2.1 and discussed in more detail in Berg et al. (2019a), metal-selection techniques of H I absorbers are typically employed to discern between genuine subDLAs and false positives (such as two blended Ly  $\alpha$  forest clouds), and may potentially introduce biases into the selection of metal abundances. For example, these metallicity-selection methods can miss metal-poor subDLAs if the observations are not sufficiently deep, and thus artificially increases the  $\langle Z/Z_{\odot} \rangle$  measurement. Additionally,  $z_{\text{abs}} \lesssim 1.7$  subDLAs are selected using strong Mg II absorption,



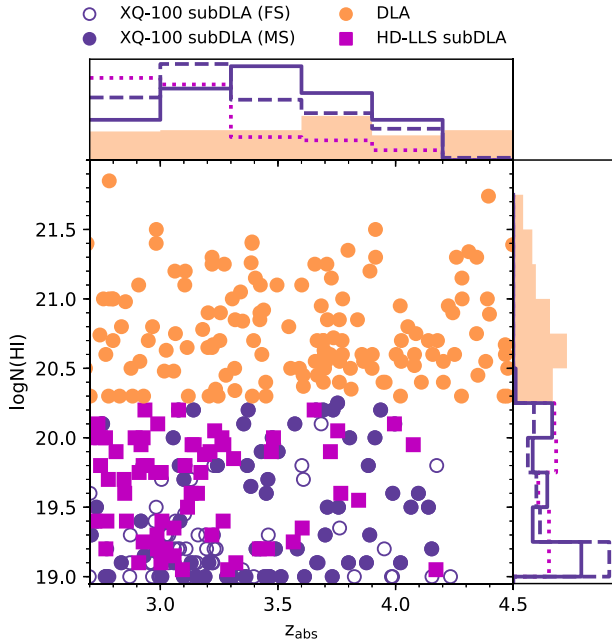
**Figure 6.** Gas-phase metallicity evolution of the subDLAs (purple) and DLAs (orange) without (top panel) and with (bottom panel) ICs applied. SubDLAs are split into full (purple dashed line) and metal-selected (purple solid line) samples. Curves are generated from sliding bin approach used in previous XQ-100 DLA/subDLA papers. The DLA sample consists of the XQ-100 DLA measurements (Berg et al. 2016a) plus the literature catalogue of Rafelski et al. (2014, R14). The mean gas-phase metallicity for the two highest redshift bins of Quiret et al. (2016, Q16) are shown as black crosses in the top panel. The B-MC method is also applied to the subDLAs from the HD-LLS sample (Fumagalli et al. 2016), and is shown by the dashed magenta line. The thin purple lines in the upper panel denote the effects of including lower limits in the XQ-100 subDLA data set, assuming a metallicity ceiling of +1.0 dex. Note that for the FS of subDLAs with no metal lines detected, the best-fitting ionization models are poorly constrained, typically reaching the lowest metallicity limit of the CLOUDY ionization grid ( $[M/H] = -4$ ), but could still be lower if such low metallicity systems exist. The thin dash-dotted line in the lower panel shows the  $\langle Z/Z_{\odot} \rangle$  evolution of the FS subDLAs upon the inclusion of an additional local galaxy radiation source.

which can potentially lead to biases in the overall metallicity of these systems (Murphy et al. 2007; Dessauges-Zavadsky et al. 2009; Berg et al. 2017, conversely see discussions in Kulkarni et al. 2007 and Rao et al. 2017 for counterarguments) and thus lead to higher metallicities and/or stronger metallicity evolution relative to DLAs. While these metal line selection methods are effective at finding systems, particularly at low redshifts when the metallicity is higher, we must proceed with caution at higher redshift where low column density, metal-poor systems are more frequent.

We tested the significance of metal-selection techniques using the XQ-100 data by splitting the subDLAs into the MS and FS (solid and dashed purple lines in the top panel of Fig. 6), effectively providing bounds on the  $\langle Z/Z_{\odot} \rangle$  evolution from using metal selection

techniques or not. It is clear that, although the measured  $\langle Z/Z_{\odot} \rangle$  for the MS is indeed higher than the FS subDLAs, it is not sufficient to explain the higher gas-phase metallicity of the Quiret et al. (2016) best-fitting evolution at lower redshifts (i.e. black line in Fig. 6). As discussed in Berg et al. (2019a), Ly $\alpha$  absorption from low column density subDLAs seen at  $z_{\text{abs}} \lesssim 3.2$  become increasingly difficult to separate from higher Lyman series lines. In addition, strong metal lines (e.g. C IV and Si IV doublets) common in subDLAs shift into the Ly $\alpha$  forest. While the FS subDLAs may have a significant number of false-positives, the FS provides a lower bound on  $\langle Z/Z_{\odot} \rangle$  from metal-blind selection effects.

To highlight the properties of the various samples, Fig. 7 shows the distribution of  $\log N(\text{H I})$  as a function  $z_{\text{abs}}$  for the three absorber



**Figure 7.** The distribution of  $\log N(\text{H I})$  as a function of  $z_{\text{abs}}$  for the XQ-100 (purple circles) and HD-LLS (magenta squares) subDLA and DLA (orange circles) samples. The open and filled purple circles denote the full (FS) and metal-selected (MS) subDLAs. The normalized distributions of  $\log N(\text{H I})$  and  $z_{\text{abs}}$  for the respective samples are also shown in the right and top panel. The notation of the lines follows that of Fig. 6 for the subDLAs (solid purple is for the FS subDLAs, dashed purple for the MS subDLAs, dotted magenta for the HD-LLS subDLAs), while the DLAs distributions are denoted by the filled orange histograms.

samples (XQ-100 subDLA, HD-LLS subDLA, and DLA samples; purple circles, magenta squares, and orange circles, respectively). We highlight two differences in the sampling of the two subDLA samples: the bulk of the HD-LLS subDLAs are at  $z_{\text{abs}} \lesssim 3.3$  with only 14 subDLAs at higher redshift, and the XQ-100 sample contains only five  $\log N(\text{H I}) \gtrsim 19.5$  absorbers at redshift  $z_{\text{abs}} \leq 3$  (compared to the 18 HD-LLS systems in the same redshift and H I column density range). The poor sampling of subDLAs in the respective regimes can potentially lead to the significant difference between the XQ-100 and HD-LLS subDLA samples, particularly as the XQ-100 subDLAs are mostly at  $[\text{M}/\text{H}] \lesssim -1.5$  at  $z_{\text{abs}} \leq 3$ . The differences in the column density distributions of both XQ-100 and HD-LLS subDLA samples likely imply the two samples are probing different physical conditions (such as different gas densities), resulting in different ICs. As discussed below, the inclusion of ionization modelling can correct for these differences in physical conditions between samples.

Another possibility for the large discrepancies could come from variations in data quality. While the XQ-100 survey provides a consistently modest signal-to-noise ratio across all 100 QSO spectra, both the HD-LLS and EUADP samples use data from various observing programs of different data quality, instrumental resolutions (HD-LLS only), and target selection (such as pre-selecting for absorbers). For example, the signal-to-noise ratio of the HD-LLS measurements vary between  $\approx 10$  and  $40 \text{ pixel}^{-1}$ , using resolving powers  $R \approx 5000$ – $10\,000$  (Prochaska et al. 2015), introducing variations in metallicity sensitivity by up to  $\lesssim 1$  dex across the HD-LLS data. Thus some HD-LLS sightlines are more sensitive to metal-poor objects than XQ-100. Although the higher resolution of Keck/HIRES (HD-LLS sample) and VLT/UVES (EUADP) should both aid in the removal

of equivalent metal-poor false positive absorbers found in XQ-100 at  $z_{\text{abs}} \lesssim 3.2$  and potentially explain the discrepancy in the steeper  $\langle Z/Z_{\odot} \rangle$  evolution implied by the HD-LLS and EUADP samples, we emphasize that most of the absorbers exclusively in the FS have  $\log N(\text{H I}) \leq 19.4$  and are at  $z_{\text{abs}} \leq 3.2$  (i.e. where the prominent metal lines are within the Ly  $\alpha$  forest; Berg et al. 2019a); the FS systems should not contribute significantly to the H I-weighted  $\langle Z/Z_{\odot} \rangle$  due to their low H I column densities.

### 3.2.2 Dust depletion

The differences in sample properties (Section 2.3.1), data quality, and resolution between the XQ-100 and HD-LLS surveys can greatly influence the detection of different elements, as some of the typical volatile elements used as total metallicity tracers are also weak lines (i.e. S II and Zn II) or are often blended with the Ly  $\alpha$  forest (O I). For redshifts  $z_{\text{abs}} \leq 3.2$  (where the discrepancy between the XQ-100 and HD-LLS  $\langle Z/Z_{\odot} \rangle$  evolution is biggest), only 1 of 24 of the  $[\text{M}/\text{H}]$  detections for the XQ-100 subDLAs makes use of a volatile element compared to  $\approx 25$  per cent of the HD-LLS subDLAs. When only refractory elements are used (Si, Fe, Mg) in our computation of  $\langle Z/Z_{\odot} \rangle$  for the XQ-100 and HD-LLS samples at  $z_{\text{abs}} \geq 3.2$ , we found  $\langle Z/Z_{\odot} \rangle$  changed by at most 0.2 dex in a given redshift bin. Assuming there is little redshift evolution in the dust content in absorbers (De Cia et al. 2018), it is unlikely that the treatment of dust can explain the discrepancy in  $\langle Z/Z_{\odot} \rangle$  between the three subDLA samples (Péroux et al. 2007).

We note that the bulk of QSOs observed in the XQ-100, EUADP, and HD-LLS surveys were selected based on optical photometry. Various studies have demonstrated that optically selected QSOs can have a significant effect on the measured H I column density distribution function and  $\langle Z/Z_{\odot} \rangle$  by missing some of the most metal- and H I-rich systems (Jorgenson et al. 2013; Krogager et al. 2019). Given that the two surveys being compared in this work all use optically selected QSOs and the systems’ metallicities are measured with the same methodology, their relative evolution of  $\langle Z/Z_{\odot} \rangle$  should be consistent with each other; but may not completely encompass the total metallicity evolution of subDLAs.

### 3.2.3 Ionization effects

As discussed in Section 2.3, subDLAs are not completely self-shielded and can be affected by external ionizing radiation sources. To study the effects of ionizing radiation, we recomputed the  $\langle Z/Z_{\odot} \rangle$  for all the subDLAs and DLA samples using the MCMC-derived metallicities ( $[\text{M}/\text{H}]_{\text{IC}}$ ) presented in Section 2.3. We elected to draw  $[\text{M}/\text{H}]_{\text{IC}}$  values from the resulting MCMC posterior probability density distribution for each subDLA in the B-MC simulation to account for the errors in the metallicity. The bottom panel of Fig. 6 shows the resulting  $\langle Z/Z_{\odot} \rangle$  curves using  $[\text{M}/\text{H}]_{\text{IC}}$  in place of  $[\text{M}/\text{H}]$  for the two subDLA samples. We remind the reader that the MCMC simulations poorly constrain  $[\text{M}/\text{H}]_{\text{IC}}$  for systems without metal detections such that the solid purple line in the bottom panel of Fig. 6 is only used as a reference to study the relative effects on  $\langle Z/Z_{\odot} \rangle$  from including these metal-poor systems.

With the inclusion of the estimated ICs for subDLAs, it is clear from the bottom panel of Fig. 6 that the difference at low redshifts in  $\langle Z/Z_{\odot} \rangle$  between the HD-LLS and XQ-100 subDLA samples disappears. The inclusion of ICs demonstrates, with respect to DLAs, that the XQ-100 subDLAs exhibit a steeper gas-phase metallicity evolution for redshifts  $2.7 \leq z_{\text{abs}} \leq 4.4$ . Additionally, subDLAs still

appear to be more metal poor than DLAs at  $\gtrsim 1\sigma$  significance ( $-2.5 \leq [M/H]_{IC} \leq -1.7$ ; compared to  $[M/H] \approx -1.5$  in DLAs over the same redshift range), consistent with what is seen in Fumagalli et al. (2016).

The thin dash-dotted line in the bottom panel of Fig. 6 shows the FS subDLA sample using ICs derived from the inclusion of a galaxy radiation source (Section 2.3.2). There is a  $\lesssim 0.3$  dex offset in  $\langle Z/Z_{\odot} \rangle$  once a stellar component to the radiation field is added. Nevertheless, the general trend of  $\langle Z/Z_{\odot} \rangle$  from the inclusion of a galaxy radiation source remains consistent with the trends seen for the MS and FS samples. With the dash-dotted metallicity curve bounded by the FS and MS samples, the effects of sample selection have a much more significant effect than the choice of radiation source.

Independent of potential ionization and sample selection effects, it is evident from the top and bottom panels of Fig. 6 that subDLAs at  $3.0 \leq z_{\text{abs}} \leq 4.3$  are on average more metal poor than DLAs across the same redshift range, which is in contrast to what is seen at redshifts  $z_{\text{abs}} \lesssim 2$  (Péroux et al. 2007; Dessauges-Zavadsky et al. 2009; Som et al. 2013; Quiret et al. 2016). The inclusion of ICs (i.e. bottom panel of 6), which are required to remove significant systematic errors, can also reconcile the differences between the observed  $\langle Z/Z_{\odot} \rangle$  evolution from the HD-LLS and XQ-100 subDLAs. At face value, the inclusion of ICs extends the redshift range (from  $z_{\text{abs}} \gtrsim 3.5$ ) at which the  $\langle Z/Z_{\odot} \rangle$  of subDLAs evolves much more rapidly than DLAs (Péroux et al. 2007; Meiring et al. 2009; Som et al. 2013; Quiret et al. 2016). However, as discussed in Section 2.3, the interpretation of the nature of the redshift evolution of  $\langle Z/Z_{\odot} \rangle$  hinges on correct assumptions in the ionization modelling (as previously noted, e.g. Dessauges-Zavadsky et al. 2009; Fumagalli et al. 2016) along with a proper characterization of the false positive rate of H I selected absorbers (i.e. the difference in the solid and dashed purple curves in the bottom panel of Fig. 6), and consistent dust corrections. The evidence of multiphase gas (Fox et al. 2007; Milutinovic et al. 2010; Prochaska et al. 2015, and demonstrated in Fig. 3) requires more complex modelling (see  $z_{\text{abs}} \approx 0$  example in Buie, Fumagalli & Scannapieco 2020). As noted in Fig. 4, assuming a multiphase model may increase the metallicities of the subDLAs by  $\approx 0.2$ – $0.3$  dex. Including such a shift in the subDLA gas-phase metallicity would be insufficient to raise the subDLA curves in the bottom panel of Fig. 6 to completely match the higher metallicity DLA curve for redshifts  $z_{\text{abs}} \gtrsim 3.5$ .

Studies comparing the metallicity of the CGM to the host galaxies ISM at  $z \leq 0.2$  have typically found lower metallicities in the CGM (Prochaska et al. 2017; Kacprzak et al. 2019), which is also found for the host galaxies of  $z < 1$  subDLAs (Rahmani et al. 2016; Rhodin et al. 2018). Combining with the results of subDLAs being on average more metal poor than DLAs, this could potentially imply that subDLAs tend to trace CGM-like rather than ISM-like environments more frequently than DLAs (Fumagalli et al. 2011). Rhodin et al. (2019) analysed zoom-in simulations of a Milky Way-like progenitor and found subDLAs and DLAs arising in the galaxy CGM, but with higher metallicities than measured from the XQ-100 subDLAs. Future cosmological simulations with improved resolution in CGM environments (e.g. Peebles et al. 2019; van de Voort et al. 2019) could provide more detailed predictions for the distributions of metallicities as a function of  $\log N(\text{H I})$  in both the ISM and outer regions of the CGM, bringing more context to interpreting these differences in metallicity of subDLA and DLA absorbers.

### 3.3 The mass density of metals in subDLAs

In order to compare the relative contribution of subDLAs and DLAs to the overall metal budget of the Universe, we computed the mass

density of metals ( $\log(\Omega_m)$ ). For absorbers with an  $N(\text{H I})$  between  $N_1$  and  $N_2$ ,  $\Omega_m$  is given by

$$\Omega_m = \frac{1.3m_p H_0}{c \rho_{\text{crit}}} \int_{N_1}^{N_2} \frac{N f(N)}{X_{\text{H I}}} 10^{\log(Z/Z_{\odot})_{IC}} Z_{\odot} dN, \quad (5)$$

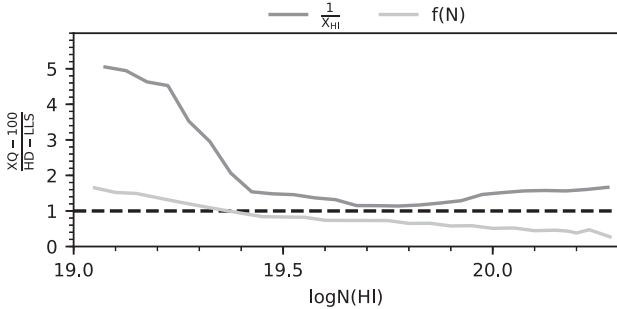
where  $m_p$  is the mass of the proton,  $\rho_{\text{crit}}$  is the critical density of the Universe at redshift 0,  $X_{\text{H I}}$  is the neutral fraction of atomic hydrogen gas,  $f(N)$  is the H I column density distribution function of the absorber, and  $Z_{\odot}$  is the metallicity of the Sun in mass units ( $Z_{\odot} = 0.0142$ ; Asplund et al. 2009). The factor of 1.3 accounts for the mass of both atomic H and He. For each  $\log N(\text{H I})$  bin in equation (5), we compute the H I-weighted mean of  $X_{\text{H I}}(Z/Z_{\odot})_{IC}$ . To estimate the errors on  $\log(\Omega_m)$ , we follow the same B-MC method by sampling the posterior distributions of the gas-phase metallicity and  $X_{\text{H I}}$  of each system's ionization modelling to reconstruct 10 000 samples to compute  $\log(\Omega_m)$ . For each system, we randomly draw pairs of neutral fraction and metallicity from the MCMC modelling output to include any possible degeneracies between the two parameters in our computation of  $\log(\Omega_m)$ . We also sample the respective  $f(N)$  distributions from Berg et al. (2019a) for the FS subDLAs, MS subDLAs, and DLAs. Note that as the HD-LLS subDLA sample is selected in a similar fashion to the XQ-100 FS subDLAs, we adopt the FS  $f(N)$  distribution for the computation of  $\log(\Omega_m)$  for the HD-LLS subDLAs.  $\log(\Omega_m)$  is computed within the same two redshift bins of  $f(N)$  from Berg et al. (2019a,  $2.3 \leq z_{\text{abs}} < 3.2$  and  $3.2 \leq z_{\text{abs}} < 4.5$ ).

Table 4 presents the median and  $1\sigma$  percentile confidence intervals of  $\log(\Omega_m)$  for subDLAs and DLAs for the respective subDLA and DLA samples. We find DLAs and subDLAs contribute approximately the same amount of metals to the cosmic metal budget, with DLAs contributing between  $\approx 0.8$  and  $1.1 \times$  as many metals compared to subDLAs (depending on the subDLA sample and type of ionization modelling). We note that the errors on  $\log(\Omega_m)$  for the XQ-100 sample are larger than for the other subDLA and DLA samples as a result of a significant fraction of XQ-100 absorbers having poorly constrained ICs due to the few number of line detections. Our results are inconsistent with similar measurements at  $2 \lesssim z_{\text{abs}} \lesssim 3$  in the literature (Prochaska et al. 2006; Péroux et al. 2007; Fumagalli et al. 2016), where subDLAs contribute  $\gtrsim 3 \times$  the amount of metals than DLAs (as measured by Rafelski et al. 2014).

Although our method recovers the same  $\log(\Omega_m)$  value as Rafelski et al. (2014) for the DLAs, we point out that we underestimate the  $\log(\Omega_m)$  derived for the HD-LLS sample by almost an order of magnitude compared to the value of Fumagalli et al. (2016,  $\log(\Omega_m) \approx -5.8$ ) using the same metallicity data. Using the functional forms of  $f(N)$  and neutral fraction from Fumagalli et al. (2016), we are able to reproduce the  $\log(\Omega_m)$  for the HD-LLS sample, highlighting that the effects of the underlying functional forms of  $f(N)$  and neutral fractions of the sample have a significant effect on computing  $\log(\Omega_m)$ . As stated above, we elected to randomly drawn pairs of neutral fraction and metallicity from the MCMC ionization modelling done by Fumagalli et al. (2016) over using a functional form fitted to the data, as this accounts for any possible degeneracies between metallicity and neutral fraction in the posterior distributions of the ionization modelling. Furthermore, the functional form of the neutral fraction used by Fumagalli et al. (2016) is a linear regression spanning three orders of magnitude of H I to cover both LLS and subDLAs in the HD-LLS sample; and thus may not be the best description of the neutral fraction in the subDLAs. To investigate the discrepancy in the derived  $\log(\Omega_m)$  between Fumagalli et al. (2016) and this paper, Fig. 8 shows the fractional difference in both the adopted neutral fraction (shown as  $\frac{1}{X_{\text{H I}}}$  following equation (5); dark grey line) and  $f(N)$  (light grey line) as a function of  $\log N(\text{H I})$  using

**Table 4.**  $\log(\Omega_m)$  estimates.

Sample	$2.3 \leq z_{\text{abs}} < 3.2$			$3.2 \leq z_{\text{abs}} < 4.5$		
	$\log(\Omega_m)_{17}$	$\log(\Omega_m)_{50}$	$\log(\Omega_m)_{83}$	$\log(\Omega_m)_{17}$	$\log(\Omega_m)_{50}$	$\log(\Omega_m)_{83}$
XQ-100 subDLAs (FS)	−6.8	−5.8	−4.7	−7.0	−6.3	−5.5
XQ-100 subDLAs (MS)	−7.1	−5.9	−4.8	−7.0	−6.4	−5.5
XQ-100 subDLAs (MS; low ions only)	−7.7	−6.9	−6.3	−7.8	−7.4	−6.9
HD-LLS subDLAs	−6.9	−6.7	−6.5	−7.4	−7.1	−6.9
XQ-100 + R14 DLAs	−6.9	−6.5	−6.0	−6.4	−6.0	−5.4



**Figure 8.** The fractional difference of the assumed neutral fraction ( $\frac{1}{x_{\text{H I}}}$ , dark grey line) and  $f(N)$  (light grey line) of this work relative to Fumagalli et al. (2016,  $\frac{XQ-100}{HD-LLS}$ ) as a function of  $\log N(\text{H I})$ . Values of  $\frac{XQ-100}{HD-LLS} > 1$  (i.e. above the dashed black line) imply the measured quantity from the method used in this paper is larger than that from Fumagalli et al. (2016). While  $f(N)$  has a small difference between the two methods, the neutral fraction can vary by up to a factor of 5 for low column density subDLAs ( $\log N(\text{H I}) \lesssim 19.4$ ).

the same HD-LLS data. It is clear from Fig. 8 that the neutral fraction is at most  $\approx 5\times$  larger when using our method compared to the linear regression of Fumagalli et al. (2016), while the choice of  $f(N)$  has a much smaller effect on the calculation of  $\log(\Omega_m)$ . We emphasize that, while our  $[M/H]_{\text{IC}}$  analysis is robust to the choice of ionization modelling (Sections 2.3 and 3.2), the calculation of  $\log(\Omega_m)$  is very sensitive to a combination of both the method used to describe the neutral fraction of gas in subDLAs and LLS samples (Fumagalli et al. 2016), and the small sample sizes that do not adequately sample the diverse range in physical environments probed by subDLAs (see discussion above about differences in the HD-LLS and XQ-100 subDLA samples).

To better quantify the contribution of metals from absorbers of different  $\log N(\text{H I})$  and redshift, Fig. 9 shows  $\log(\Omega_m)$  as a function of  $\log N(\text{H I})$  across the two redshift bins ( $2.3 \leq z_{\text{abs}} < 3.2$ , and  $3.2 \leq z_{\text{abs}} < 4.5$ ). The  $\log(\Omega_m)$  curves are generated using a sliding bin of width  $\Delta \log N(\text{H I}) = 0.2$  dex and a sliding step size of 0.02 dex. Although the respective curves between the top and bottom panels are consistent with the  $1\sigma$  distributions, we note that all the  $\log(\Omega_m)$  curves for the subDLAs (XQ-100 and HD-LLS samples, purple and magenta lines, respectively) show a steeper dependence on  $\log N(\text{H I})$  in the low-redshift bin compared to the higher redshift curves, in contrast to the DLA  $\log(\Omega_m)$  curves that remain unchanged.

While the absolute contribution to  $\log(\Omega_m)$  is dependent on the implementation of the ionization modelling (such as assuming a single versus multiphase medium, solid and dashed purple lines of Fig. 9, respectively), absorbers with  $\log N(\text{H I}) \lesssim 19.5$  appear to contribute  $\approx 0.4$ – $0.8$  dex more metals at lower redshifts while higher column density systems show a small decrease in  $\log(\Omega_m)$  (see also the total values in Table 4). This tentative redshift evolution is likely independent of absorber selection effects, as the  $\log(\Omega_m)$

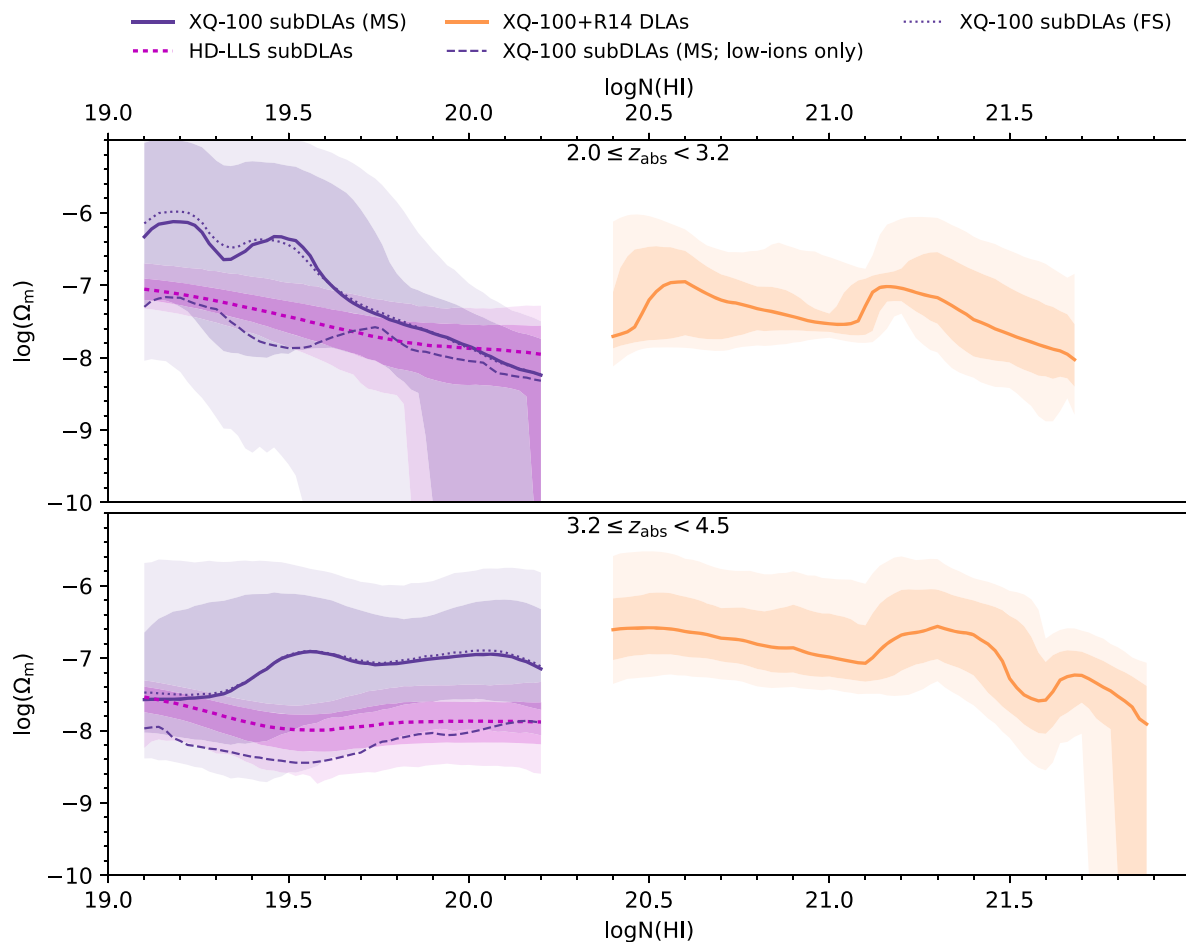
curves for the FS and MS subDLAs (dotted and solid purple lines, respectively) are nearly identical. If such a redshift evolution exists, it would imply feedback processes are efficient at rapidly ejecting metals from higher density environments (such as the ISM) into lower density environments (CGM). However, larger statistical samples of subDLAs in both redshift regimes are needed to truly constrain this result.

### 3.4 $[\alpha/\text{Fe}]$ in subDLAs

$[\alpha/\text{Fe}]$  is a commonly used diagnostic to probe the star formation history within a galaxy (Tinsley 1979), tracing the relative nucleosynthetic contribution of massive stars (the primary source of  $\alpha$  elements; such as O, Si, S) to Type Ia supernovae (the main source of the Fe-peak elements). As the metallicity of the system increases,  $[\alpha/\text{Fe}]$  remains constant at the Type II supernovae yield ( $[\alpha/\text{Fe}] \approx +0.3$  dex) until the time-delayed contribution of Fe from Type Ia supernovae. The metallicity at which  $[\alpha/\text{Fe}]$  begins to include Type Ia contributions (typically referred to as the  $[\alpha/\text{Fe}]$  ‘knee’) provides information on how many stars were formed in the past, and can be used as a probe of relative galaxy mass (e.g. dwarfs versus Milky Way-like galaxies; Tolstoy et al. 2009).

Fig. 10 displays the evolution of the gas-phase  $[\text{Si}/\text{Fe}]$  for subDLAs (both XQ-100 and HD-LLS absorbers; purple circles) compared to a literature compilation of DLAs and Milky Way stars (Berg et al. 2015a; orange squares and grey stars, respectively). ICs are not included on the subDLAs and DLAs as the observed  $[\alpha/\text{Fe}]$  is typically only overestimated by at most  $\approx 0.02$  dex based on our modelled ICs (see Table 2). It is well known that the DLA’s  $[\text{Si}/\text{Fe}]$  pattern deviates from the expected Milky Way  $[\alpha/\text{Fe}]$  pattern, as the increased relative depletion of Fe (with respect to Si) on to dust will artificially enhance the measured  $[\text{Si}/\text{Fe}]$  as a function of metallicity (e.g. Rafelski et al. 2012; Berg et al. 2015a). As previously noted by Quiret et al. (2016), the subDLAs in Fig. 10 appear to follow the same trend of  $[\text{Si}/\text{Fe}]$  as DLAs. The near-identical trends of DLAs and subDLA suggest the relative dust depletion pattern of Si to Fe is similar (to a precision within the scatter of  $[\alpha/\text{Fe}]$ , i.e.  $\approx \pm 0.25$  dex), as both subDLAs and DLAs at  $[M/H] \gtrsim -0.5$  show  $[\text{Si}/\text{Fe}] \approx +0.5$  when  $[\alpha/\text{Fe}]$  is (sub)solar in both the Milky Way and dwarf galaxies. Using dust depletion modelling from Jenkins (2009), Quiret et al. (2016) concluded that subDLAs show similar dust properties to DLAs, regardless of ionization effects (contrary to expectations from previous studies, e.g. Meiring et al. 2009; Prochaska et al. 2015), agreeing with the implications of Fig. 10.

In Fig. 10, the scatter in  $[\alpha/\text{Fe}]$  ( $\approx \pm 0.25$  dex) for both DLAs and subDLAs is of the order of the expected nucleosynthetic signature of the  $[\alpha/\text{Fe}]$  enhancement (0.3 dex). Combined with the increasing  $[\alpha/\text{Fe}]$  with metallicity with dust depletion, this washes out any potential underlying nucleosynthetic signature. Thus,  $[\alpha/\text{Fe}]$  in subDLAs and DLAs cannot be used without an accurate dust

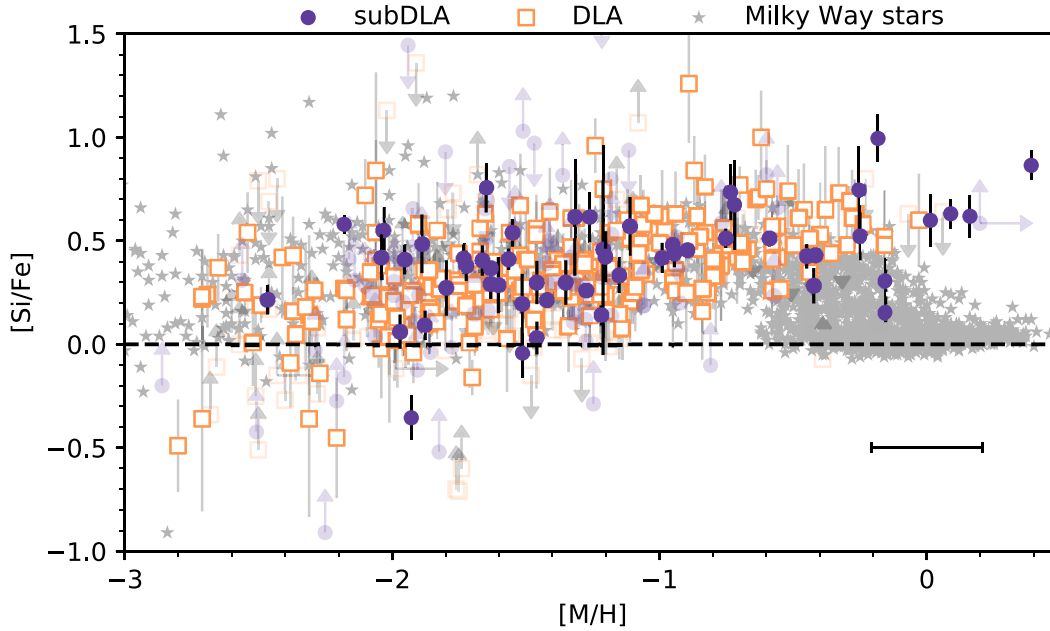


**Figure 9.** The mass density of metals ( $\log(\Omega_m)$ ) as a function of  $\log N(\text{HI})$  for both subDLAs (magenta and purple curves) and DLAs (orange curves). The purple lines represent different subsamples of the XQ-100 subDLAs, while the curves for the HD-LLS are shown by the dotted magenta lines. The darker and lighter shaded regions represent the  $1\sigma$  and  $2\sigma$  percentile confidence intervals on the respective curves. The top and bottom panels show the evolution for two different redshift bins ( $2.3 \leq z_{\text{abs}} < 3.2$  and  $3.2 \leq z_{\text{abs}} < 4.5$ , respectively). All curves in both the top and lower panels are consistent within  $1\sigma$ . However, the increased contribution to  $\log(\Omega_m)$  from  $\log N(\text{HI}) \lesssim 19.5$  absorbers at lower redshifts (top panel) is suggestive that low density environments are being enriched with metals faster than higher density regions.

correction to determine whether individual absorbers have surpassed the expected  $[\alpha/\text{Fe}]$  knee. In attempts to correct for the depletion of Fe in DLAs, previous studies have used Zn as a proxy for Fe as Zn is volatile and the Milky Way shows a solar  $[\text{Zn}/\text{Fe}]$  for  $[\text{M}/\text{H}] \gtrsim -2$  (Snedden & Crocker 1988; Pettini et al. 1997; Vladilo et al. 2001; Nissen et al. 2007). As such,  $[\alpha/\text{Zn}]$  is typically measured to be (sub)solar across the full range of metallicities probed by DLAs (Centurión et al. 2000; Prochaska & Wolfe 2002; Nissen et al. 2004; Dessauges-Zavadsky et al. 2006; Rafelski et al. 2012; Berg et al. 2015a). Recent studies of dwarf galaxies have shown that  $[\text{Zn}/\text{Fe}]$  is typically subsolar, and can be as low as  $-1.0$  dex (Shetrone et al. 2003; Sbordone et al. 2007; Berg et al. 2015a; Skúladóttir et al. 2017), negating the use of  $[\text{Zn}/\text{Fe}]$  as a dust depletion metric in DLAs as DLAs likely probe a mix of both dwarf and Milky Way enrichment histories. However, Berg et al. (2015a) argued that independent of assuming an intrinsically solar  $[\text{Zn}/\text{Fe}]$  for DLAs, the significant fraction of DLAs with low  $[\alpha/\text{Zn}]$  (Rafelski et al. 2012; Berg et al. 2015a) imply DLAs have undergone Type Ia supernovae enrichment. Given that Zn is not detected in the XQ-100 subDLAs, we cannot apply the same approach for the subDLAs. Higher signal-to-noise ratio spectra are required to study Zn and the nature of  $[\alpha/\text{Fe}]$  in subDLAs.

### 3.5 [C/O] in subDLAs

$[\text{C}/\text{O}]$  is a useful tracer of the nucleosynthetic contribution of high to intermediate mass stars, as  $[\text{C}/\text{O}]$  is expected to increase with increasing metallicities as the intermediate-mass stars begin contributing C to the chemical evolution of the system (Berg et al. 2016b). In low metallicity Milky Way stars and dwarfs galaxies ( $[\text{M}/\text{H}] \leq -1.5$ ), observations suggest  $[\text{C}/\text{O}]$  remains at a subsolar value. At metallicities  $[\text{M}/\text{H}] \lesssim -2.5$ , there has been an observed increase in  $[\text{C}/\text{O}]$  with decreasing metallicity, that is thought to originate from massive zero-metallicity supernovae contributing to the production of carbon (Akerman et al. 2004; Spite et al. 2005; Berg et al. 2016b), but this rise in  $[\text{C}/\text{O}]$  may also be a result of not including 3D or non-local thermodynamic equilibrium assumptions in stellar abundance modelling (Nissen et al. 2017; Amarsi, Nissen & Skúladóttir 2019, see grey stars in Fig. 11). By varying the duration and efficiency of the star formation of dwarf galaxies, Berg et al. (2019b) demonstrated that the rate of increase in  $[\text{C}/\text{O}]$  with metallicity could be explained by star formation burst cycles, with repeated nucleosynthetic contributions from massive stars (diluting  $[\text{C}/\text{O}]$ ) followed by a delayed contribution from AGB winds (enhancing  $[\text{C}/\text{O}]$ ). Such cycling in the star formation history



**Figure 10.** The metallicity evolution of gas-phase  $[\text{Si}/\text{Fe}]$  for subDLAs (purple circles; this work), DLAs (orange squares; Berg et al. 2015a), and Milky Way stars (grey stars; Berg et al. 2015a). The increasing trend of  $[\text{Si}/\text{Fe}]$  with metallicity in DLAs is typically explained by the increasing contribution of dust depletion of Fe with metallicity. The ICs for  $[\text{Si}/\text{Fe}]$  are typically small in magnitude ( $\approx 0.02$  dex) and are not included in the plot. Errors in  $[\text{Si}/\text{Fe}]$  are denoted by the vertical lines, and include the error in the IC. The horizontal error bar in the bottom right shows the median error in metallicity for the subDLAs. Despite the inclusion of ICs, subDLAs appear to follow the same trend as the DLAs and potentially indicating that the two populations have similar dust depletion patterns.

could explain the return to solar  $[\text{C}/\text{O}]$  much more quickly in dwarf galaxies relative to the Milky Way. In DLAs, measuring the  $[\text{C}/\text{O}]$  ratio is only well constrained in the lowest metallicity systems, as the strong  $\text{O I } 1302 \text{ \AA}$  and  $\text{C II } 1334 \text{ \AA}$  lines quickly saturate at  $[\text{M}/\text{H}] \gtrsim -2$ . For the most metal-poor DLAs,  $[\text{C}/\text{O}] \approx -0.4$  dex, and appears to agree with metal-poor Milky Way stars (Pettini et al. 2008; Cooke et al. 2011, 2017). Using Si in place of O as an  $\alpha$ -element tracer, previous work has demonstrated that  $[\text{C}/\alpha] \approx 0$  in LLSs at all metallicities, suggesting LLSs trace material that has been polluted by ejecta from galaxies (Prochaska et al. 2015; Lehner et al. 2016), and is consistent with the idea that LLSs gas is material associated with circumgalactic environments (Fumagalli et al. 2013, 2016).

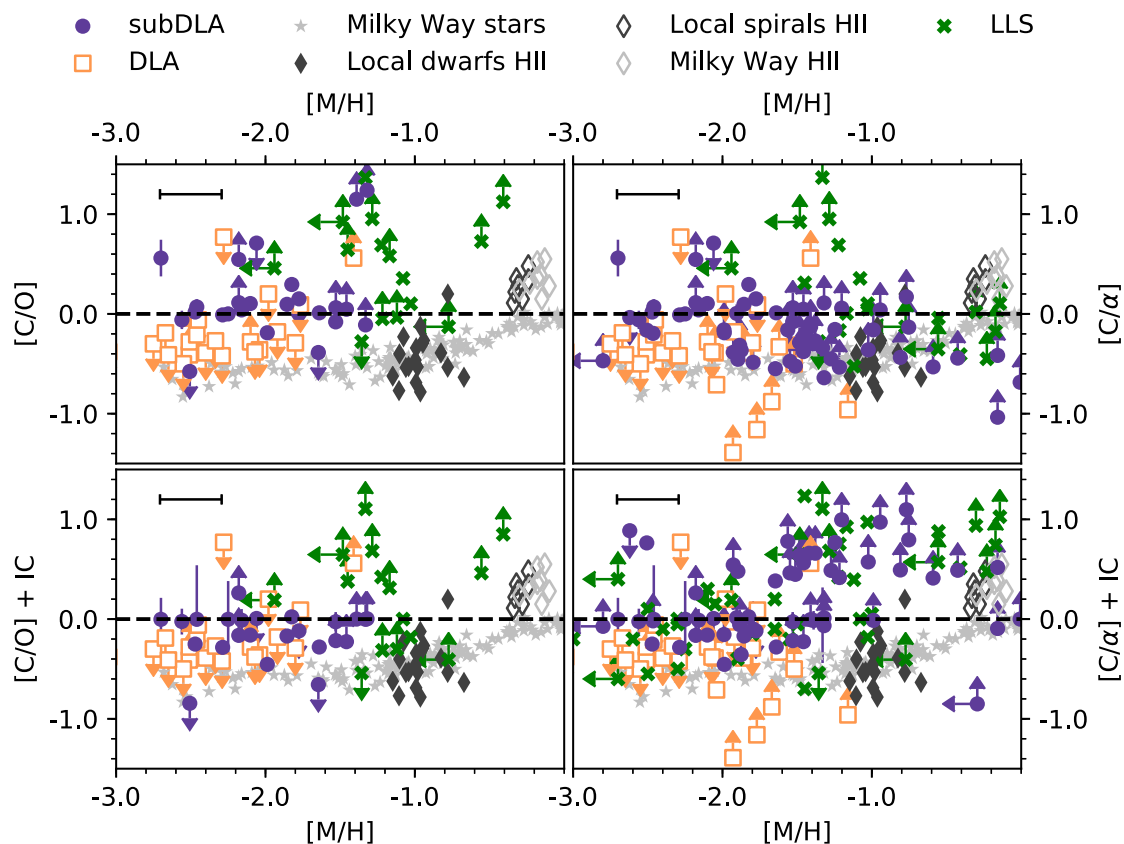
The top panels of Fig. 11 compare the metallicity evolution of the gas-phase  $[\text{C}/\text{O}]$  (left-hand panels) and  $[\text{C}/\alpha]$  (right-hand panels; using either O or Si as the  $\alpha$ -element tracer) in subDLAs (XQ-100 and HD-LLS subDLAs; purple circles), DLAs (orange squares; Cooke et al. 2011; Berg et al. 2015a; Cooke et al. 2017), and LLSs (green crosses; Prochaska et al. 2015; Lehner et al. 2016).  $[\text{C}/\text{O}]$  for Milky Way stars (light grey stars; Amarsi et al. 2019, which include 3D and non-local thermodynamic equilibrium effects), as well as in H II regions in the Milky Way (García-Rojas & Esteban 2007, light grey open diamonds), nearby spirals (Esteban et al. 2009, dark grey open diamonds), and nearby dwarf galaxies (Berg et al. 2019b, dark grey filled diamonds) are shown in all four panels. The bottom panels show the effects of including ICs on the measured  $[\text{C}/\text{O}]$  and  $[\text{C}/\alpha]$  (for DLAs, subDLAs, and LLSs). Note that we elected to continue to plot the ionization-corrected  $[\text{C}/\text{O}]$  and  $[\text{C}/\alpha]$  as a function of  $[\text{M}/\text{H}]$  in the bottom panel to emphasize the effect of ICs. Using  $[\text{M}/\text{H}]_{\text{IC}}$  in the bottom panels would shift the subDLA points to  $\approx 0.3$  dex lower metallicities (i.e. the typical offsets seen in Fig. 1).

Independent of whether ICs are included, subDLAs consistently exhibit  $[\text{C}/\text{O}] \gtrsim -0.4$ , similar to the typical  $[\text{C}/\text{O}]$  in metal-poor

DLAs and  $\gtrsim 0.1$  dex higher than the Milky Way abundances of Amarsi et al. (2019). However, for the bulk of the subDLAs and DLAs, both the C and O lines become saturated with increasing metallicity, making  $[\text{C}/\text{O}]$  difficult to measure. In place of  $[\text{C}/\text{O}]$ , the more commonly measured  $[\text{C}/\alpha]$  (right-hand panels of Fig. 11) shows that subDLAs are consistent with LLS measurements (Prochaska et al. 2015; Lehner et al. 2016). Again, regardless of including ICs, the bulk of subDLAs and LLS  $[\text{C}/\alpha]$  measurements are consistently above the Milky Way  $[\text{C}/\text{O}]$  trend by at least 0.1 dex (without ICs) or 0.7 dex (with ICs). Such large discrepancies in  $[\text{C}/\alpha]$  could potentially be explained by dust depletion, as Si is more refractory than C. As discussed in Sections 3.2 and 3.4, we currently do not have sufficient detections of elements to constrain the amount of dust depletion in individual subDLAs, but it appears that subDLAs follow similar amounts of depletion as DLAs. Assuming a typical depletion pattern from DLAs would only decrease  $[\text{C}/\alpha]$  by 0.1–0.3 dex (Vladilo et al. 2011; Berg et al. 2015a; De Cia et al. 2018), which is insufficient to reach the typical Milky Way values upon including ICs. Given the results of Berg et al. (2019b) and the assumption that DLAs and subDLAs have similar relative depletion patterns as DLAs, the bulk of LLS (as suggested by Lehner et al. 2016) and subDLAs are consistent with being enriched by material ejected from several burst cycles in the star formation of galaxies.

## 4 CONCLUSION

This paper presents the ionic column density and abundance measurements in the gas phase for 20 ionic species (Table 1;  $\approx 4$  ionic species are detected on average per subDLA system) in a blind, H I-selected sample of subDLAs from the XQ-100 survey. Using the measured column densities for all ionic species as constraints (mainly



**Figure 11.**  $[C/O]$  (left-hand panels) and  $[C/\alpha]$  ratio (right-hand panels) as a function of metallicity in subDLAs (purple circles), DLAs (orange squares; Cooke et al. 2011, 2017; Rafelski et al. 2014; Berg et al. 2015a), LLSs (green crosses; Prochaska et al. 2015; Lehner et al. 2016), Milky Way stars (light grey stars; Amarsi et al. 2019), using the 3D non-local thermodynamic equilibrium values and H II regions (unfilled light grey diamonds), and H II regions in nearby spiral (unfilled dark grey diamonds) and dwarf galaxies (filled dark grey diamonds). The top panels show the measured values of the respective abundance ratios, while the lower panels have applied an IC to the DLAs, subDLAs, and LLSs. Errors in  $[C/\alpha]$  and  $[C/O]$  are typically smaller than the symbol size. The horizontal error bar in the top right of each panel shows the median error in metallicity for the subDLAs. Despite including the IC, the bulk of subDLAs and LLS above a metallicity of  $[M/H] \gtrsim -2$  appear to have near-solar  $[C/O]$  and  $[C/\alpha]$  at metallicities  $-3 \leq [M/H] \leq -1$  while the measured abundance ratio in stars drops to a  $[C/O] \approx -1$ .

C IV, Si II, Mg II, Si IV, Al II, Fe II, C II, and O I; in order of decreasing detection frequency), we estimate the ionization corrected gas-phase metallicity ( $[M/H]_{IC}$ ) of the subDLAs derived from MCMC analysis based on a large grid of CLOUDY ionization models. No dust corrections have been included in the  $[M/H]_{IC}$  measurements. We expect similar statistical offsets in  $[M/H]_{IC}$  from including a Jenkins (2009) dust depletion model in the MCMC analysis found by Fumagalli et al. (2016) (median  $[M/H]_{IC}$  offset of  $0.00^{+0.10}_{-0.06}$ , Section 2.3.1). Comparing with gas-phase metal abundances of other H I-selected subDLAs (i.e. XQ-100 and HD-LLS; Prochaska et al. 2015), we investigated the redshift evolution of the H I-weighted mean gas-phase metallicity ( $\langle Z/Z_{\odot} \rangle$ ; Fig. 6), the redshift evolution of the cosmic mass density of metals ( $\log(\Omega_m)$ ; Fig. 9), and the metallicity evolution of  $[\alpha/Fe]$  (Fig. 10) and  $[C/O]$  (Fig. 11) probed by both subDLAs and DLAs. We find that: (i) subDLAs appear to be systematically more metal poor by 0.2–1.0 dex than DLAs when ICs are included across redshifts  $3.0 \leq z_{abs} \leq 4.3$  in contrast to  $z_{abs} \lesssim 2$  studies (Péroux et al. 2007; Dessauges-Zavadsky et al. 2009; Som et al. 2013; Quirot et al. 2016), (ii) the observed metallicity evolution of gas-phase  $[\alpha/Fe]$  in subDLAs traces that of DLAs almost identically (within  $\approx \pm 0.25$  dex of scatter), and (iii) the gas-phase  $[C/O]$  in subDLAs remains constantly higher than the Milky Way value by, on average,

$\gtrsim 0.7$  dex across a large range in metallicities ( $-3 \lesssim [M/H] \lesssim -1$ ). These results are robust to ICs derived from MCMC modelling using several different CLOUDY ionization grids. The near-identical trend of  $[\alpha/Fe]$  in subDLAs and DLAs is suggestive that the relative dust depletion patterns of DLAs and subDLAs are similar. However, the total amount of the dust depletion for each ion in subDLAs may be different. As seen in lower redshift systems, the relatively low metallicity gas in subDLAs with respect to DLAs, and the near-solar  $[C/O]$  is suggestive of subDLAs typically tracing CGM environments that host carbon-rich ejecta (Fumagalli et al. 2016; Lehner et al. 2016; Prochaska et al. 2017; Kacprzak et al. 2019). The tentative redshift evolution in the contribution to  $\log(\Omega_m)$  from  $\log N(H I) \lesssim 19.5$  absorbers supports the idea that the CGM is being enriched with metals more quickly than higher column density environments typically associated with the ISM. Given that ICs are critical for accurate measurements in subDLAs, more ionization modelling in future is necessary to accurately model the metallicity of multi-phase gas seen along QSO sightlines. Accurate chemical abundance measurements are required to constrain upcoming cosmological simulations of the gaseous environments of galaxies probed by QSO absorption line systems (Peeples et al. 2019; van de Voort et al. 2019).

## ACKNOWLEDGEMENTS

We are grateful to Ryan Cooke for providing unpublished abundance measurements to compute the ICs for the metal-poor DLAs. This project has received funding from the European Research Council (ERC) under the European Union's Horizon 2020 research and innovation programme (grant agreement No 757535). This work has been supported by Fondazione Cariplo, grant No 2018-2329. SL was funded by FONDECYT grant number 1191232.

## DATA AVAILABILITY

The data underlying this article are available in the article and in its online supplementary material. The data presented in this article were extracted from observations made with ESO Telescopes at the Paranal Observatory under programme IDs 189.A-0424(A) and 189.A-0424(B). These observations are available on the ESO archive (<http://archive.eso.org/>).

## REFERENCES

- Akerman C. J., Carigi L., Nissen P. E., Pettini M., Asplund M., 2004, *A&A*, 414, 931
- Amarsi A. M., Nissen P. E., Skúladóttir Á., 2019, *A&A*, 630, A104
- Asplund M., Grevesse N., Sauval A. J., Scott P., 2009, *ARA&A*, 47, 481
- Battisti A. J. et al., 2012, *ApJ*, 744, 93
- Berg D. A., Erb D. K., Henry R. B. C., Skillman E. D., McQuinn K. B. W., 2019b, *ApJ*, 874, 93
- Berg D. A., Skillman E. D., Henry R. B. C., Erb D. K., Carigi L., 2016b, *ApJ*, 827, 126
- Berg T. A. M., Ellison S. L., Prochaska J. X., Venn K. A., Dessauges-Zavadsky M., 2015b, *MNRAS*, 452, 4326
- Berg T. A. M., Neeleman M., Prochaska J. X., Ellison S. L., Wolfe A. M., 2015a, *PASP*, 127, 167
- Berg T. A. M. et al., 2016a, *MNRAS*, 463, 3021
- Berg T. A. M. et al., 2017, *MNRAS*, 464, L56
- Berg T. A. M. et al., 2019a, *MNRAS*, 488, 4356
- Buie Edward I., Fumagalli M., Scannapieco E., 2020, *ApJ*, 890, 33
- Centurión M., Bonifacio P., Molaro P., Vladilo G., 2000, *ApJ*, 536, 540
- Christensen L., Møller P., Fynbo J. P. U., Zafar T., 2014, *MNRAS*, 445, 225
- Christensen L. et al., 2017, *A&A*, 608, A84
- Cooke R., Pettini M., Steidel C. C., Rudie G. C., Nissen P. E., 2011, *MNRAS*, 417, 1534
- Cooke R. J., Pettini M., Steidel C. C., 2017, *MNRAS*, 467, 802
- Crighton N. H. M., Hennawi J. F., Simcoe R. A., Cooksey K. L., Murphy M. T., Fumagalli M., Prochaska J. X., Shanks T., 2015, *MNRAS*, 446, 18
- Davé R., Finlator K., Oppenheimer B. D., 2011, *MNRAS*, 416, 1354
- De Cia A., Ledoux C., Mattsson L., Petitjean P., Srianand R., Gavignaud I., Jenkins E. B., 2016, *A&A*, 596, A97
- De Cia A., Ledoux C., Petitjean P., Savaglio S., 2018, *A&A*, 611, A76
- Dessauges-Zavadsky M., Ellison S. L., Murphy M. T., 2009, *MNRAS*, 396, L61
- Dessauges-Zavadsky M., Prochaska J. X., D'Odorico S., Calura F., Matteucci F., 2006, *A&A*, 445, 93
- Dessauges-Zavadsky M., Péroux C., Kim T. S., D'Odorico S., McMahon R. G., 2003, *MNRAS*, 345, 447
- Ellison S. L., 2006, *MNRAS*, 368, 335
- Ellison S. L., Prochaska J. X., Hennawi J., Lopez S., Usher C., Wolfe A. M., Russell D. M., Benn C. R., 2010, *MNRAS*, 406, 1435
- Ellison S. L., Prochaska J. X., Mendel J. T., 2011, *MNRAS*, 412, 448
- Ellison S. L., Yan L., Hook I. M., Pettini M., Wall J. V., Shaver P., 2002, *A&A*, 383, 91
- Esteban C., Bresolin F., Peimbert M., García-Rojas J., Peimbert A., Mesa-Delgado A., 2009, *ApJ*, 700, 654
- Ferland G. J. et al., 2017, *Rev. Mex. Astron. Astrofis.*, 53, 385
- Fox A. J., Ledoux C., Petitjean P., Srianand R., 2007, *A&A*, 473, 791
- Fumagalli M., O'Meara J. M., Prochaska J. X., 2016, *MNRAS*, 455, 4100
- Fumagalli M., O'Meara J. M., Prochaska J. X., Worseck G., 2013, *ApJ*, 775, 78
- Fumagalli M., Prochaska J. X., Kasen D., Dekel A., Ceverino D., Primack J. R., 2011, *MNRAS*, 418, 1796
- García-Rojas J., Esteban C., 2007, *ApJ*, 670, 457
- Haardt F., Madau P., 2012, *ApJ*, 746, 125
- Iršič V. et al., 2017a, *Phys. Rev. D*, 96, 023522
- Iršič V. et al., 2017b, *MNRAS*, 466, 4332
- Jenkins E. B., 2009, *ApJ*, 700, 1299
- Jorgenson R. A., Murphy M. T., Thompson R., 2013, *MNRAS*, 435, 482
- Kacprzak G. G., Muzahid S., Churchill C. W., Nielsen N. M., Charlton J. C., 2015, *ApJ*, 815, 22
- Kacprzak G. G., Pointon S. K., Nielsen N. M., Churchill C. W., Muzahid S., Charlton J. C., 2019, *ApJ*, 886, 91
- Keller S. C. et al., 2014, *Nature*, 506, 463
- Khare P., Kulkarni V. P., Péroux C., York D. G., Lauroesch J. T., Meiring J. D., 2007, *A&A*, 464, 487
- Krogager J.-K., Fynbo J. P. U., Møller P., Noterdaeme P., Heintz K. E., Pettini M., 2019, *MNRAS*, 486, 4377
- Krogager J.-K., Fynbo J. P. U., Noterdaeme P., Zafar T., Møller P., Ledoux C., Krühler T., Stockton A., 2016, *MNRAS*, 455, 2698
- Kulkarni V. P., Khare P., Som D., Meiring J., York D. G., Péroux C., Lauroesch J. T., 2010, *New Astronomy*, 15, 735.
- Kulkarni V. P., Khare P., Péroux C., York D. G., Lauroesch J. T., Meiring J. D., 2007, *ApJ*, 661, 88
- Ledoux C., Petitjean P., Fynbo J. P. U., Møller P., Srianand R., 2006, *A&A*, 457, 71
- Lehner N., O'Meara J. M., Howk J. C., Prochaska J. X., Fumagalli M., 2016, *ApJ*, 833, 283
- Lehner N. et al., 2013, *ApJ*, 770, 138
- Leitherer C. et al., 1999, *ApJS*, 123, 3
- López S. et al., 2016, *A&A*, 594, A91
- McWilliam A., 1997, *ARA&A*, 35, 503
- Meiring J. D., Kulkarni V. P., Lauroesch J. T., Péroux C., Khare P., York D. G., 2009, *MNRAS*, 393, 1513
- Milutinovic N., Ellison S. L., Prochaska J. X., Tumlinson J., 2010, *MNRAS*, 408, 2071
- Morton D. C., 2003, *ApJS*, 149, 205
- Murphy M. T., Curran S. J., Webb J. K., Ménager H., Zych B. J., 2007, *MNRAS*, 376, 673
- Neeleman M., Wolfe A. M., Prochaska J. X., Rafelski M., 2013, *ApJ*, 769, 54
- Nissen P. E., Akerman C., Asplund M., Fabbian D., Kerber F., Kaufl H. U., Pettini M., 2007, *A&A*, 469, 319
- Nissen P. E., Chen Y. Q., Asplund M., Pettini M., 2004, *A&A*, 415, 993
- Nissen P. E., Silva Aguirre V., Christensen-Dalsgaard J., Collet R., Grundahl F., Slumstrup D., 2017, *A&A*, 608, A112
- Noterdaeme P. et al., 2012, *A&A*, 547, L1
- Peeples M. S., Werk J. K., Tumlinson J., Oppenheimer B. D., Prochaska J. X., Katz N., Weinberg D. H., 2014, *ApJ*, 786, 54
- Peeples M. S. et al., 2019, *ApJ*, 873, 129
- Perrotta S. et al., 2016, *MNRAS*, 462, 3285
- Perrotta S. et al., 2018, *MNRAS*, 481, 105
- Pettini M., Smith L. J., Hunstead R. W., King D. L., 1994, *ApJ*, 426, 79
- Pettini M., Smith L. J., King D. L., Hunstead R. W., 1997, *ApJ*, 486, 665
- Pettini M., Zych B. J., Steidel C. C., Chaffee F. H., 2008, *MNRAS*, 385, 2011
- Pontzen A. et al., 2008, *MNRAS*, 390, 1349
- Poudel S., Kulkarni V. P., Cashman F. H., Frye B., Péroux C., Rahmani H., Quiret S., 2020, *MNRAS*, 491, 1008
- Prochaska J. X., O'Meara J. M., Fumagalli M., Bernstein R. A., Burles S. M., 2015, *ApJS*, 221, 2
- Prochaska J. X., O'Meara J. M., Herbert-Fort S., Burles S., Prochter G. E., Bernstein R. A., 2006, *ApJ*, 648, L97

- Prochaska J. X., Wolfe A. M., 1997, *ApJ*, 487, 73
- Prochaska J. X., Wolfe A. M., 2002, *ApJ*, 566, 68
- Prochaska J. X., Wolfe A. M., 2009, *ApJ*, 696, 1543
- Prochaska J. X. et al., 2017, *ApJ*, 837, 169
- Péroux C., Bouché N., Kulkarni V. P., York D. G., 2013, *MNRAS*, 436, 2650
- Péroux C., Dessauges-Zavadsky M., D'Odorico S., Kim T.-S., McMahon R. G., 2007, *MNRAS*, 382, 177
- Péroux C., McMahon R. G., Storrie-Lombardi L. J., Irwin M. J., 2003, *MNRAS*, 346, 1103
- Péroux C., Meiring J. D., Kulkarni V. P., Khare P., Lauroesch J. T., Vladilo G., York D. G., 2008, *MNRAS*, 386, 2209
- Quiret S. et al., 2016, *MNRAS*, 458, 4074
- Rafelski M., Neeleman M., Fumagalli M., Wolfe A. M., Prochaska J. X., 2014, *ApJ*, 782, L29
- Rafelski M., Wolfe A. M., Prochaska J. X., Neeleman M., Mendez A. J., 2012, *ApJ*, 755, 89
- Rahmani H. et al., 2016, *MNRAS*, 463, 980
- Rao S. M., Turnshek D. A., Sardane G. M., Monier E. M., 2017, *MNRAS*, 471, 3428
- Rhodin N. H. P., Agertz O., Christensen L., Renaud F., Fynbo J. P. U., 2019, *MNRAS*, 488, 3634
- Rhodin N. H. P., Christensen L., Møller P., Zafar T., Fynbo J. P. U., 2018, *A&A*, 618, A129
- Rubin K. H. R., Prochaska J. X., Koo D. C., Phillips A. C., Martin C. L., Winstrom L. O., 2014, *ApJ*, 794, 156
- Savage B. D., Sembach K. R., 1991, *ApJ*, 379, 245
- Sbordone L., Bonifacio P., Buonanno R., Marconi G., Monaco L., Zaggia S., 2007, *A&A*, 465, 815
- Shetrone M., Venn K. A., Tolstoy E., Primas F., Hill V., Kaufer A., 2003, *AJ*, 125, 684
- Skúladóttir Á., Tolstoy E., Salvadori S., Hill V., Pettini M., 2017, *A&A*, 606, A71
- Snedden C., Crocker D. A., 1988, *ApJ*, 335, 406
- Som D., Kulkarni V. P., Meiring J., York D. G., Péroux C., Khare P., Lauroesch J. T., 2013, *MNRAS*, 435, 1469
- Som D., Kulkarni V. P., Meiring J., York D. G., Péroux C., Lauroesch J. T., Aller M. C., Khare P., 2015, *ApJ*, 806, 25
- Spite M. et al., 2005, *A&A*, 430, 655
- Steidel C. C., Erb D. K., Shapley A. E., Pettini M., Reddy N., Bogosavljević M., Rudie G. C., Rakic O., 2010, *ApJ*, 717, 289
- Sánchez-Ramírez R. et al., 2016, *MNRAS*, 456, 4488
- Tinsley B. M., 1979, *ApJ*, 229, 1046
- Tolstoy E., Hill V., Tosi M., 2009, *ARA&A*, 47, 371
- van de Voort F., Springel V., Mandelker N., van den Bosch F. C., Pakmor R., 2019, *MNRAS*, 482, L85
- Venn K. A., Irwin M., Shetrone M. D., Tout C. A., Hill V., Tolstoy E., 2004, *AJ*, 128, 1177
- Vernet J. et al., 2011, *A&A*, 536, A105
- Vladilo G., Abate C., Yin J., Cescutti G., Matteucci F., 2011, *A&A*, 530, A33
- Vladilo G., Centurión M., Bonifacio P., Howk J. C., 2001, *ApJ*, 557, 1007
- Zafar T., Péroux C., Popping A., Milliard B., Deharveng J.-M., Frank S., 2013, *A&A*, 556, A141
- Zheng Z., Miralda-Escudé J., 2002, *ApJ*, 568, L71

## SUPPORTING INFORMATION

Supplementary data are available at *MNRAS* online.

**Figure A1.** The metal line profiles for species in the XQ-100 subDLA sample.

**Table 2.** XQ-100 subDLA metal column densities.

**Table 3.** XQ-100 subDLA metallicities.

Please note: Oxford University Press is not responsible for the content or functionality of any supporting materials supplied by the authors. Any queries (other than missing material) should be directed to the corresponding author for the article.

This paper has been typeset from a  $\text{\TeX}/\text{\LaTeX}$  file prepared by the author.