



Publication Year	2015
Acceptance in OA	2020-03-07T14:26:38Z
Title	First stars and their local relics
Authors	SCHNEIDER, RAFFAELLA, de Bressan, M., Marassi, S., Graziani, L., VALIANTE, ROSA, LIMONGI, Marco, Salvadori, S., BIANCHI, SIMONE, Ferrara, A., Chiaki, G., Omukai, K.
Handle	http://hdl.handle.net/20.500.12386/23174

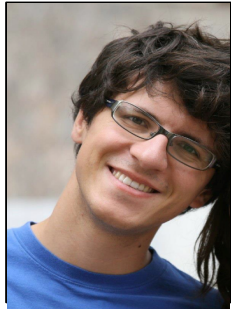


First stars and their local relics

Raffaella Schneider

INAF/Osservatorio Astronomico di Roma

the FIRST team and collaborators



Matteo de Bennassuti, PhD
INAF/OAR



Stefania Marassi, Pdoc
INAF/OAR



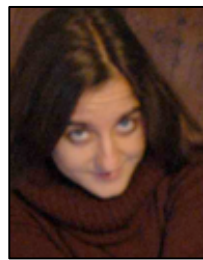
Luca Graziani, Pdoc
INAF/OAR



Rosa Valiante, Pdoc
INAF/OAR



Marco Limongi
INAF/OAR



Stefania Salvadori
Kepteyn, Groningen



Simone Bianchi
INAF/OAA



Andrea Ferrara
Scuola Normale



Gen Chiaki
Tokyo University



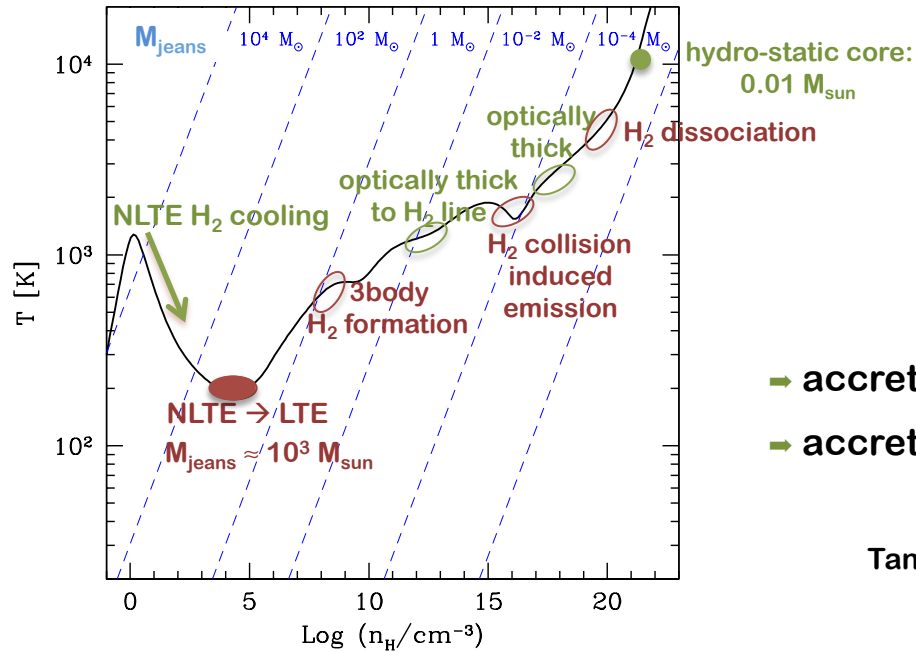
Kazu Omukai
Tohoku University

<http://www.oa-roma.inaf.it/FIRST/>

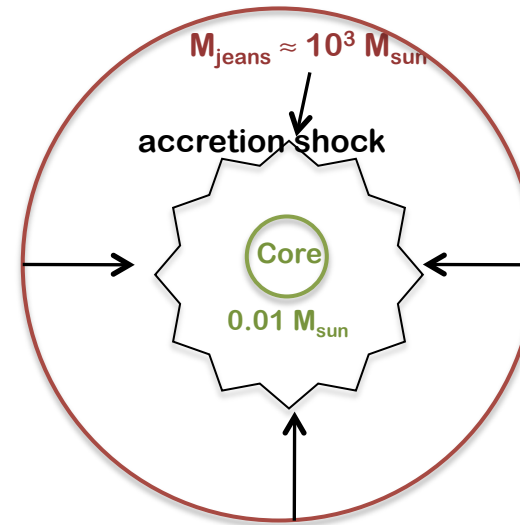
the formation of the first stars

Standard model for the formation of the first Pop III stars predicts an IMF dominated by high-mass stars

- ✓ collapse of $\approx 10^6 M_{\text{sun}}$ mini-halos at $z \approx 20$
- ✓ H_2 cooling
- ✓ gas cloud becomes Jeans unstable $M_{\text{jeans}} \approx 10^3 M_{\text{sun}}$



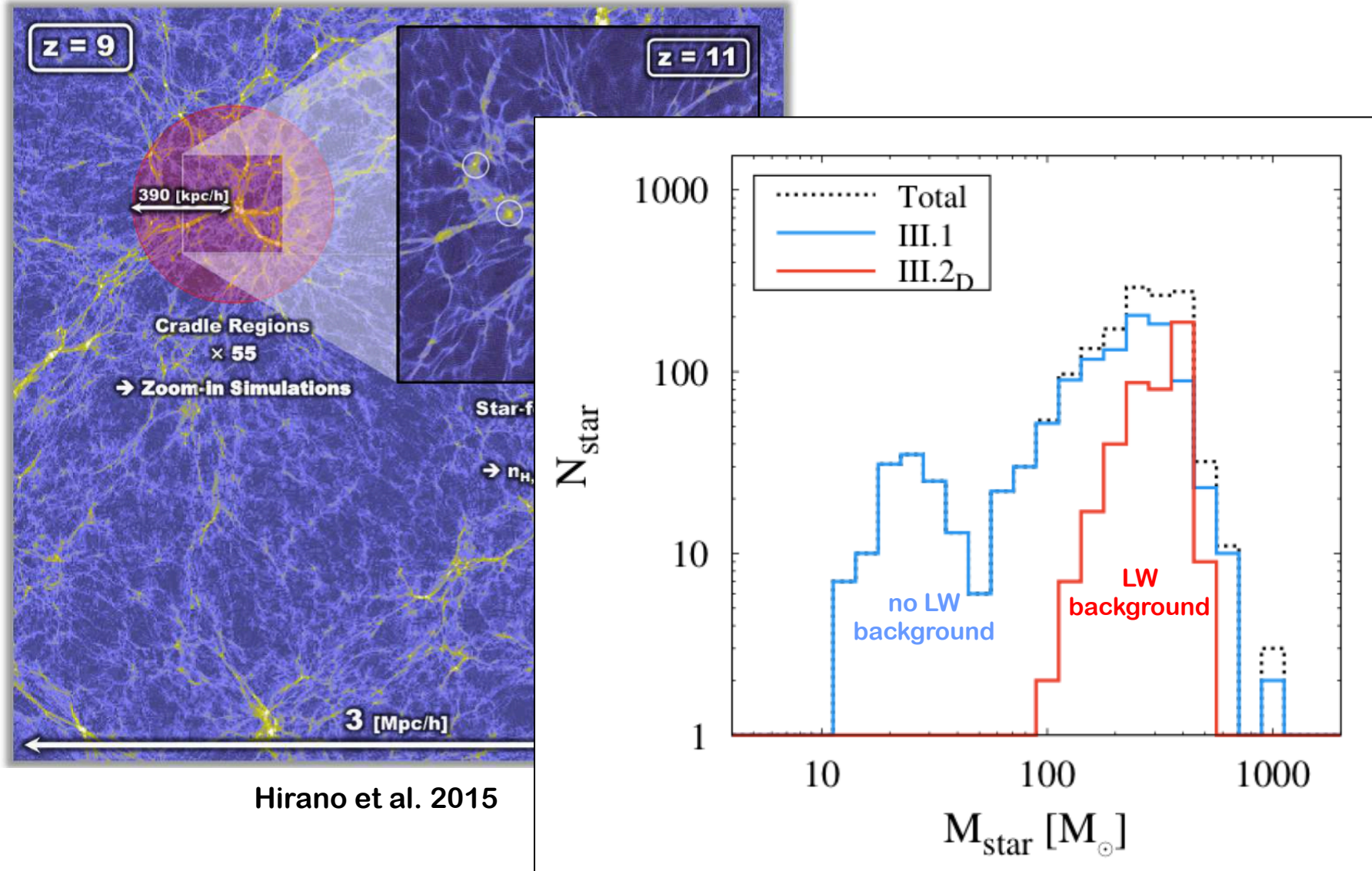
Omukai et al. 2005



- accretion rate $dM/dt \approx M_J/t_{\text{ff}} \approx c_s^3/G \approx T^{3/2}$ (x 100 larger than @ Z_{sun})
- accreted gas mass $M_{\star} \equiv [10 - 1000] M_{\text{sun}}$

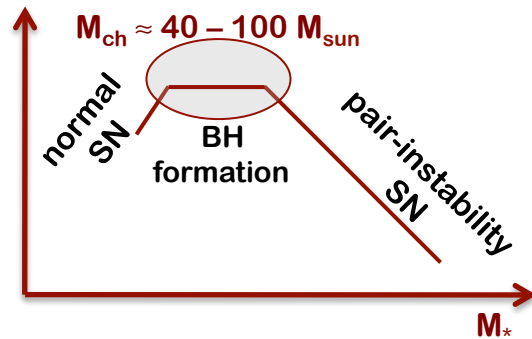
Omukai & Palla 2003; Bromm et al 2004; O'Shea et al. 2007;
Tan & McKee 2004; McKee & Tan 2008; Hosokawa et al. 2011,2012;
Hirano+14, Susa+14; Hirano+15

An ab-initio calculation of the Pop III IMF



the end-products of Pop III stars

Pop III IMF ?

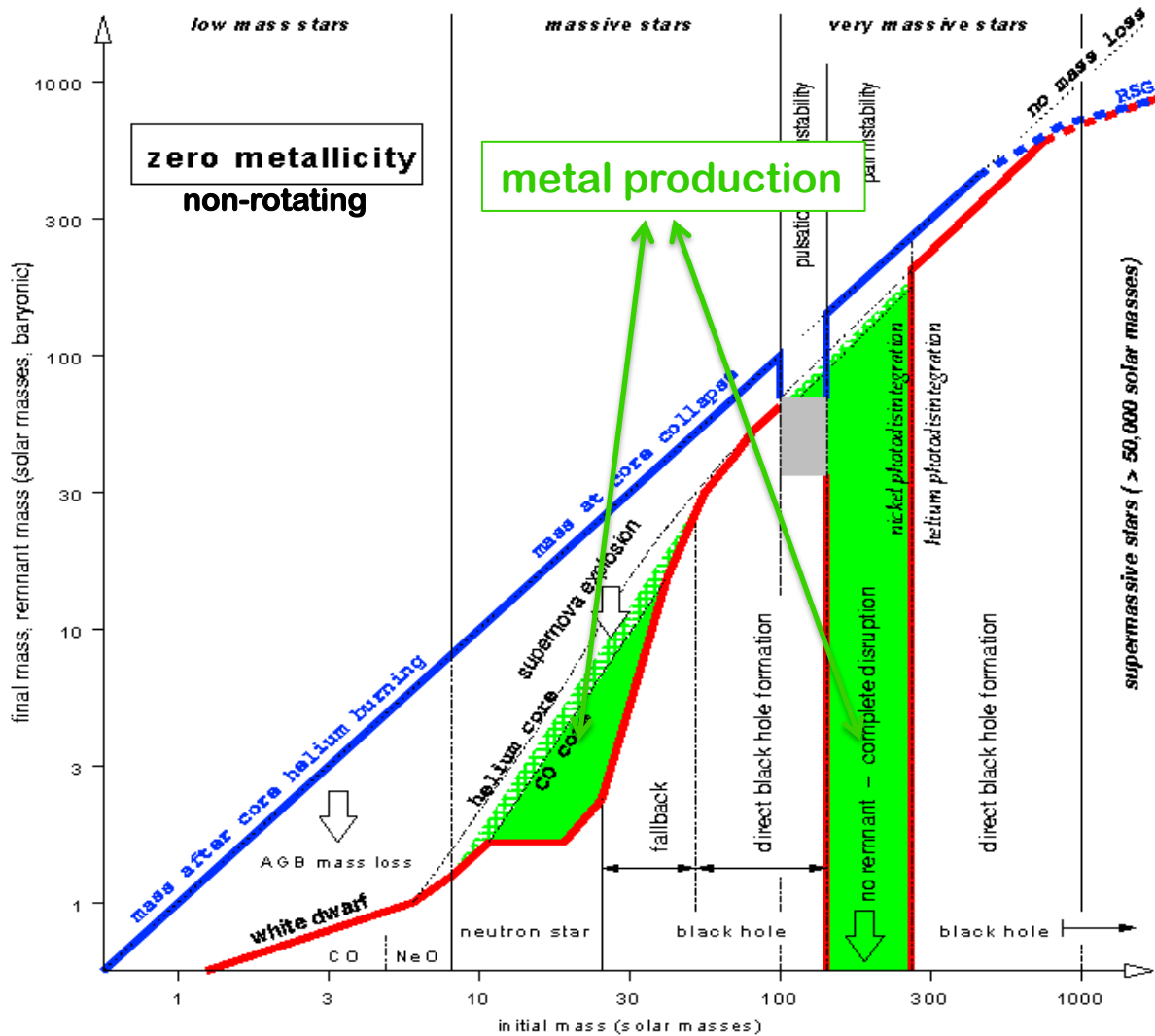


$10 M_{sun} < M_* < 40 M_{sun}$

metal production

$140 M_{sun} < M_* < 260 M_{sun}$

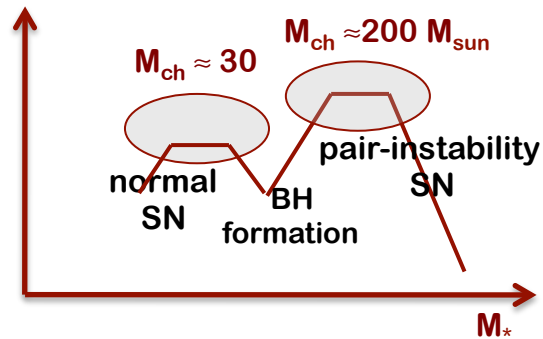
metal production



Heger & Woosley (2002), Yoon et al (2012), Marassi et al. in prep

the end-products of Pop III stars

Pop III IMF ?

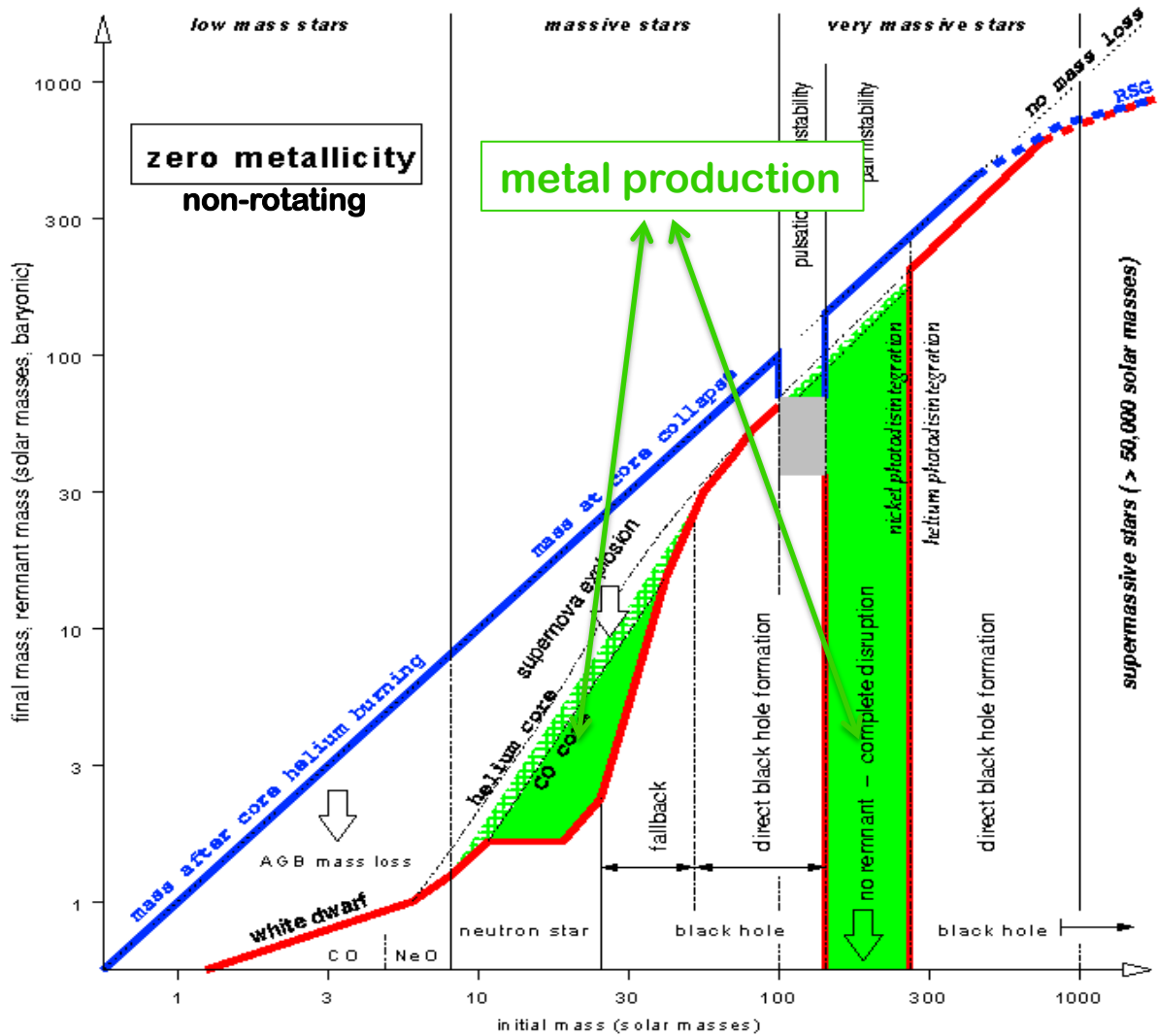


$10 M_{\text{sun}} < M_* < 40 M_{\text{sun}}$

metal production

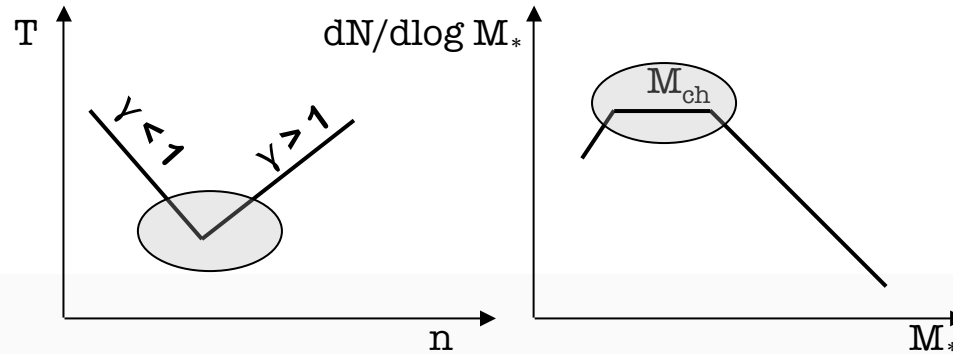
$140 M_{\text{sun}} < M_* < 260 M_{\text{sun}}$

metal production



Heger & Woosley (2002), Yoon et al (2012), Marassi et al. in prep

H₂, metal and dust-driven fragmentation: three different mass-scales



H₂-line cooling:

$M_{\text{jeans}} \sim 10^3 M_{\text{sun}}$

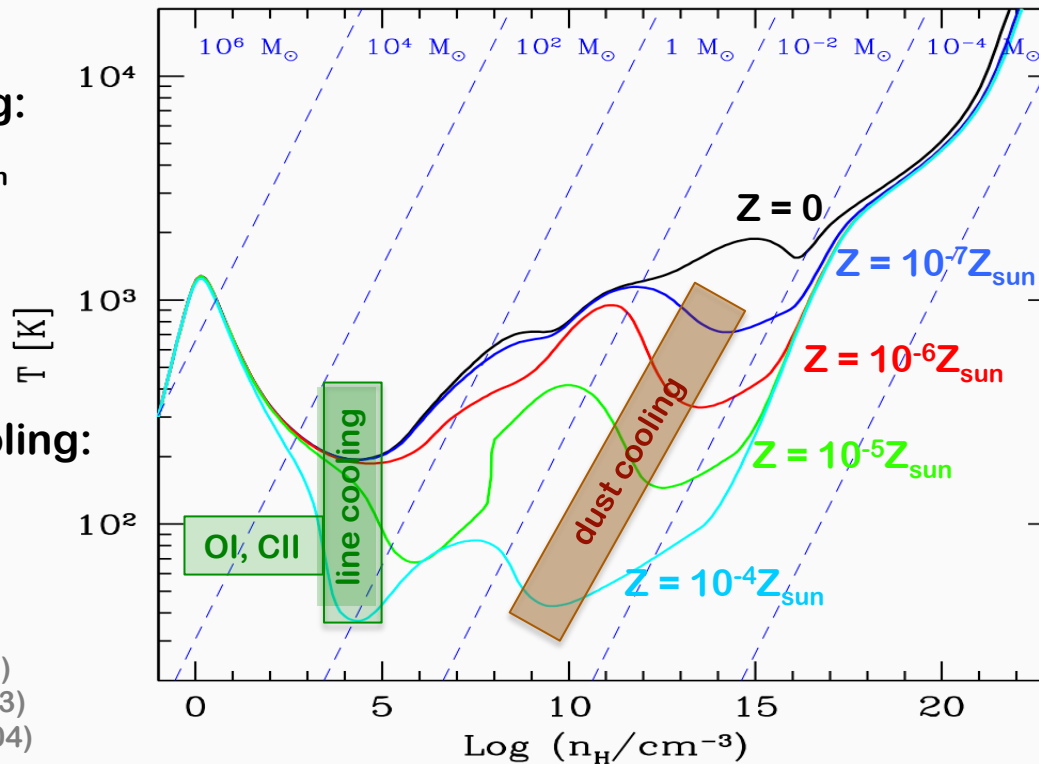
Abel+(2002)
Bromm+(2002)
Yoshida+(2008)

metal-line cooling:

$Z > 10^{-4} Z_{\text{sun}}$

$M_{\text{jeans}} > 10 M_{\text{sun}}$

Bromm et al. (2001)
Bromm & Loeb (2003)
Santoro & Shull (2004)



dust cooling:

$Z > 10^{-6} Z_{\text{sun}}$

$M_{\text{jeans}} < 1 M_{\text{sun}}$

RS et al. (2002,2003,2006),
Omukai et al. (2005)

stellar archaeology with the most metal poor stars

[Fe/H] < -3 [Fe/H] < -5

Survey	Effective sky coverage	Effective mag limit	$N < -3.0$ (EMP)	$N < -5.0$ (HMP)	People
HES	6,400 deg ²	$B < 16.5$	200	2	Christlieb et al.
SEGUE	1,000 deg ²	$B < 19$	(1,000)	(10)	Beers et al.; Caffau et al.
LAMOST	12,200 deg ²	$B < 18.0$	(3,000)	(30)	Zhao et al.
SSS	20,000 deg ²	$B < 17.5$	(2,500)	(25)	Keller et al.

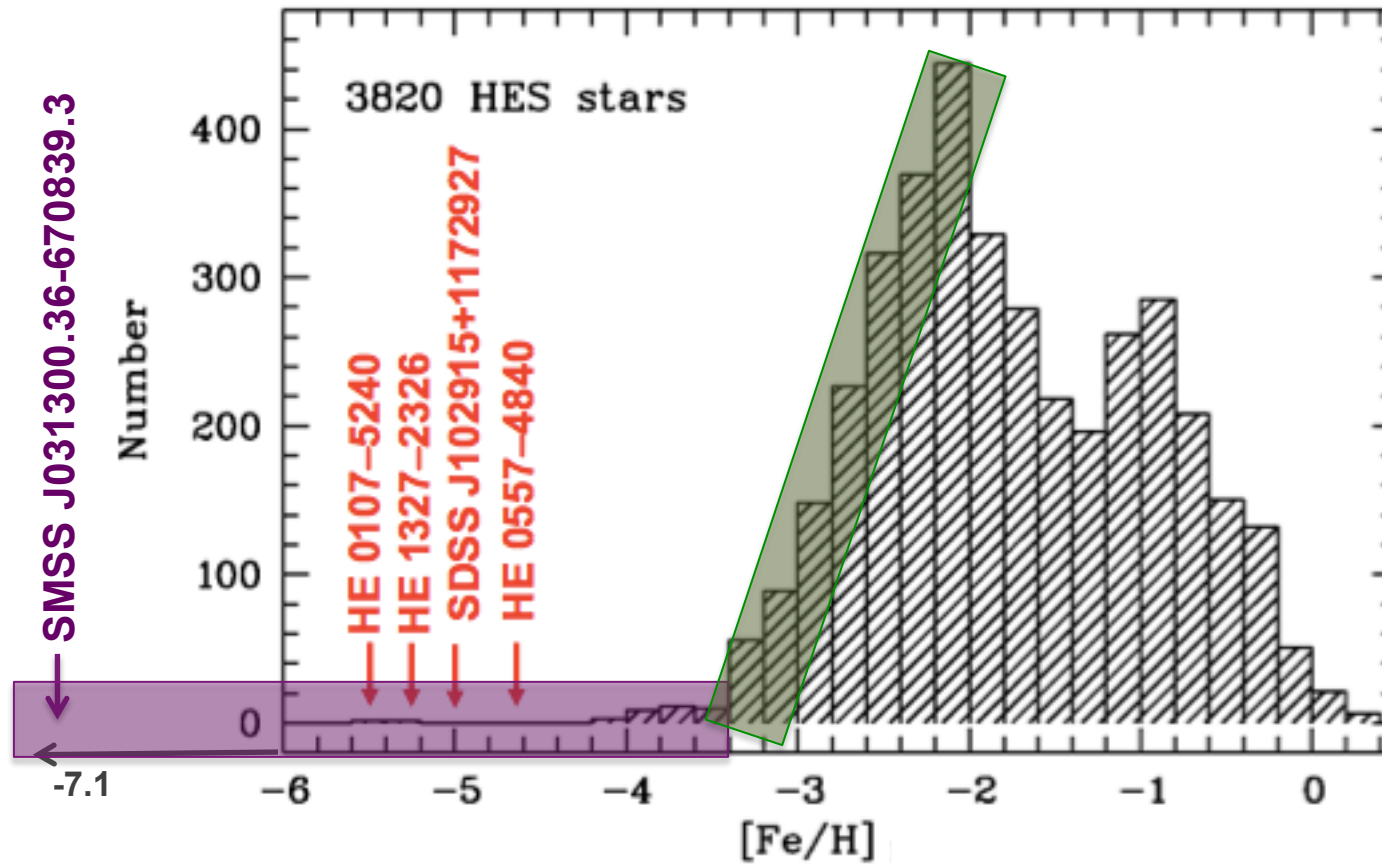
2014 Nature, 506, 463

A single low-energy, iron-poor supernova as the source of metals in the star SMSS J031300.36-670839.3

S. C. Keller¹, M. S. Bessell¹, A. Frebel^{*}, A. R. Casey¹, M. Asplund¹, H. R. Jacobson^{*}, K. Lind^{*}, J. E. Norris¹, D. Yong¹, A. Heger⁺, Z. Magic^Δ, G. S. Da Costa¹, B. P. Schmidt¹, & P. Tisserand¹

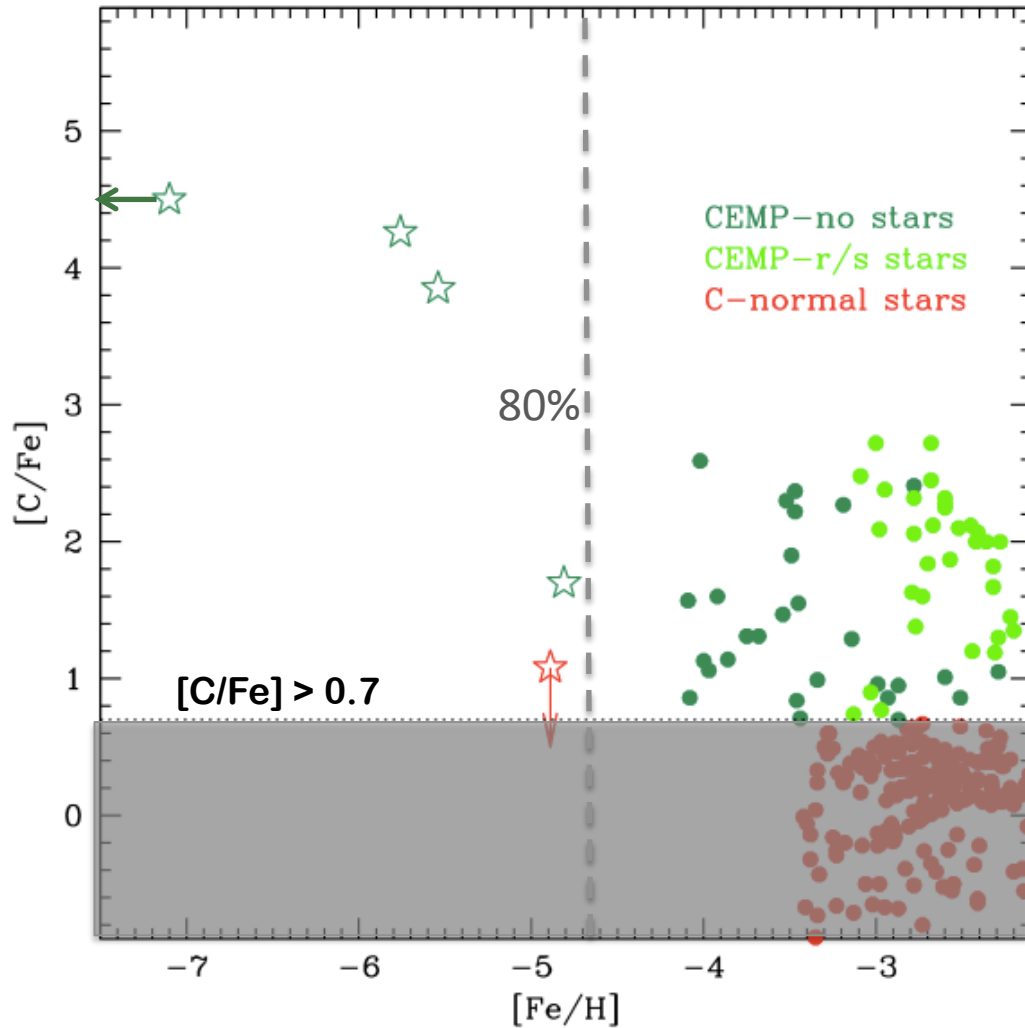
[Fe/H] < -7.1

the metallicity distribution function of the Galactic halo



carbon-enhanced metal poor stars

~ 20 % of stars with $[\text{Fe}/\text{H}] < -2$ are C-enhanced: $[\text{C}/\text{Fe}] > 0.7$



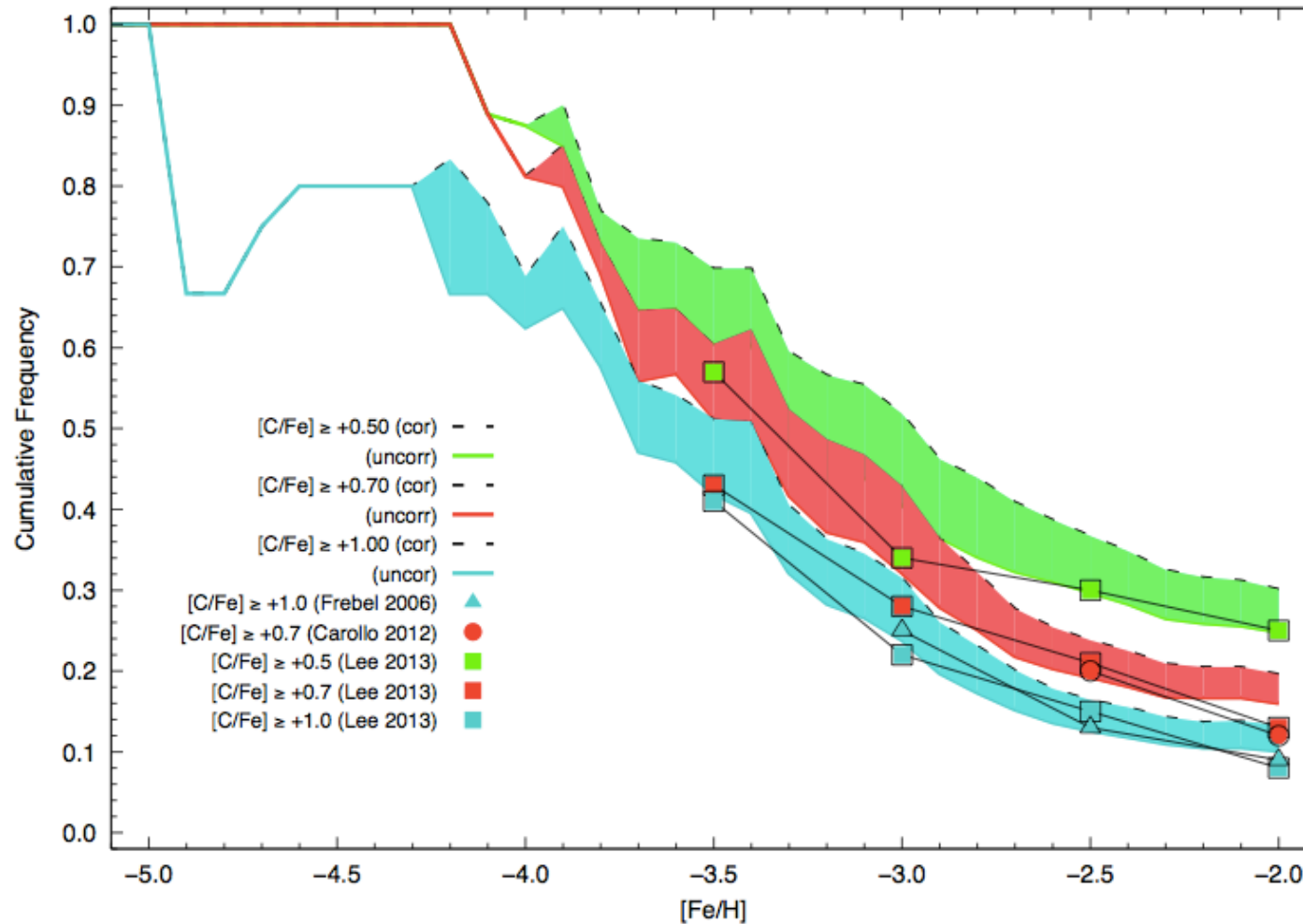
CEMP – r/s
mass transfer from an AGB companion
in binary systems

CEMP – no
metal yields from faint SNe with
mixing/fallback

Yong et al. 2013; Norris et al. 2013

The frequency of CEMP-no stars

Placco et al. 2014



$[Fe/H] \leq -2.0$, 20% exhibit $[C/Fe] \geq +0.7$

$[Fe/H] \leq -3.0$, 43% exhibit $[C/Fe] \geq +0.7$

$[Fe/H] \leq -4.0$, 81% exhibit $[C/Fe] \geq +0.7$

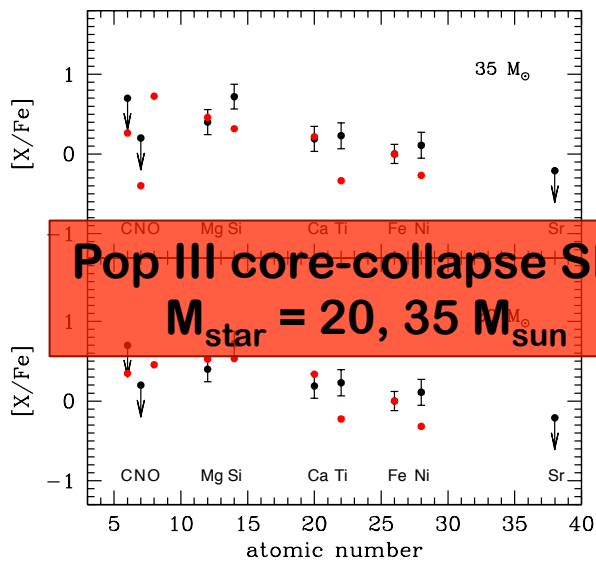
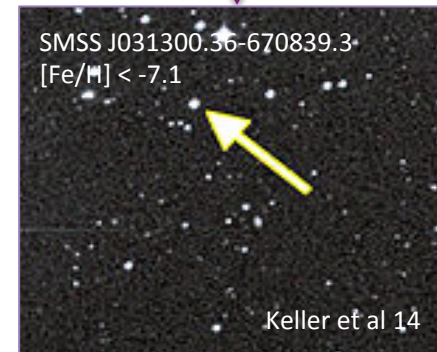
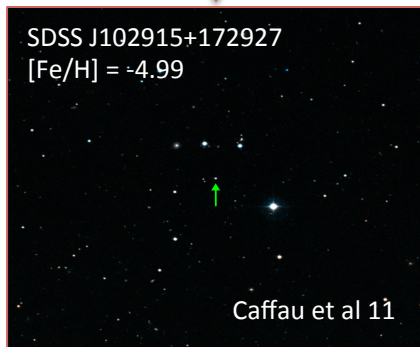
Questions that we want to address:

What are the formation pathways of C-normal and C-rich stars?

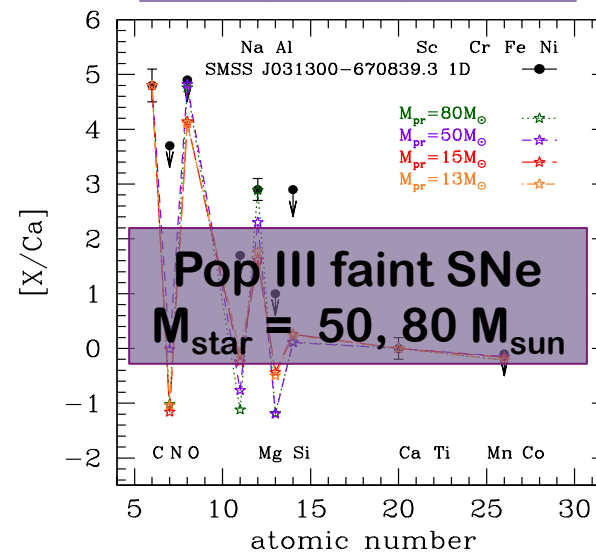
What are the physical processes that shape the low-[Fe/H] tail of the MDF ?

Why is the relative fraction of C-normal and C-rich stars varying with [Fe/H] ?

simulating the birth environment of C-normal and C-rich stars

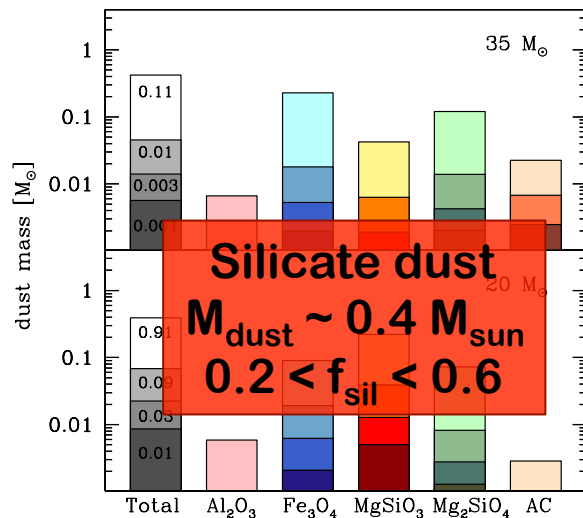
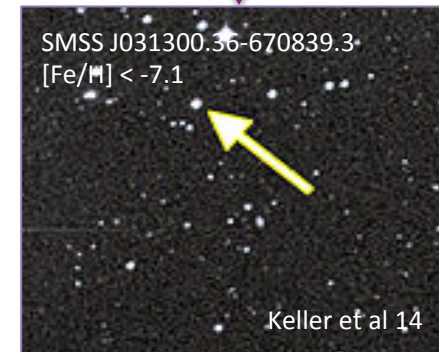
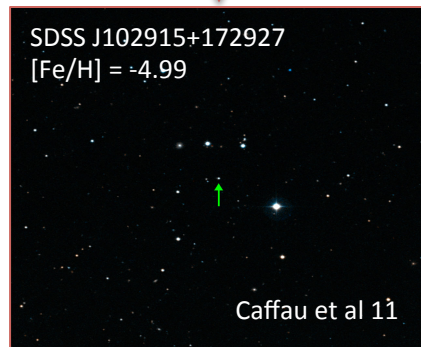


Schneider et al. 2012

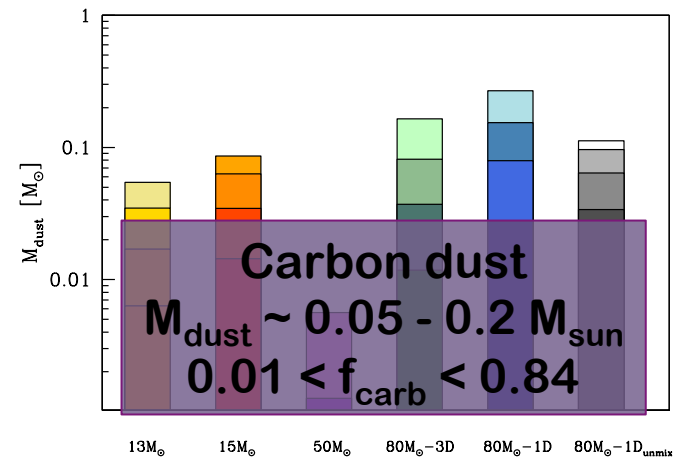


Marassi et al. 2014

simulating the birth environment of C-normal and C-rich stars

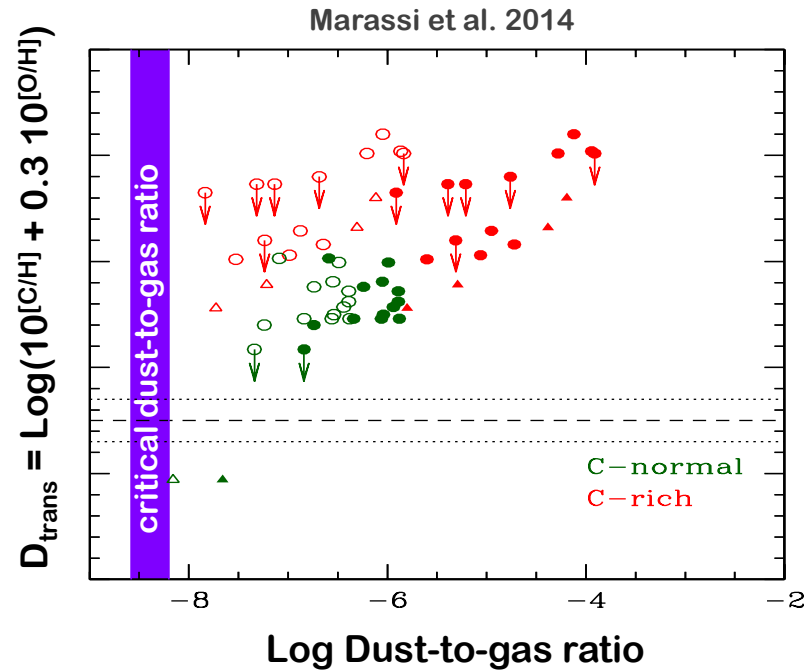


Schneider et al. 2012

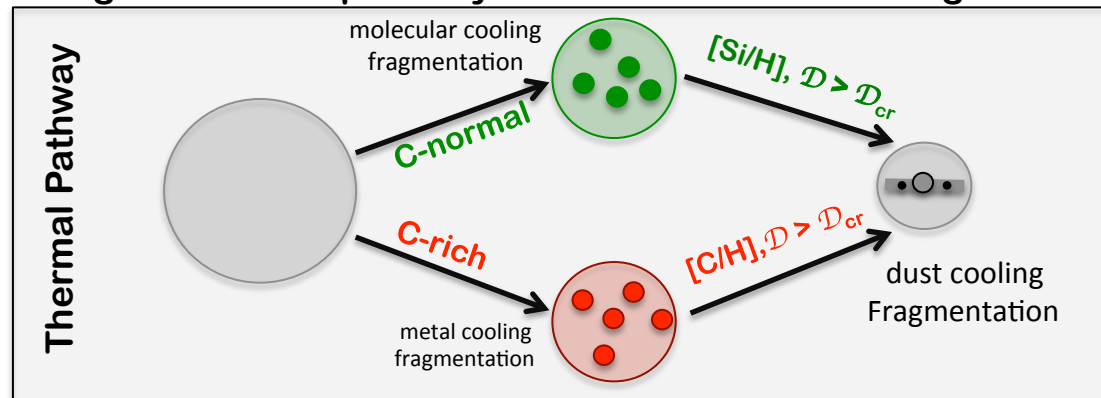


Marassi et al. 2014

simulating the birth environment of C-normal and C-rich stars

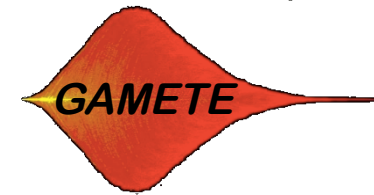


a single formation pathway based on dust-driven fragmentation



GAMETE

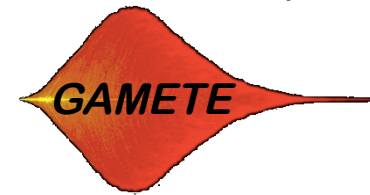
GALaxy MERger Tree and Evolution



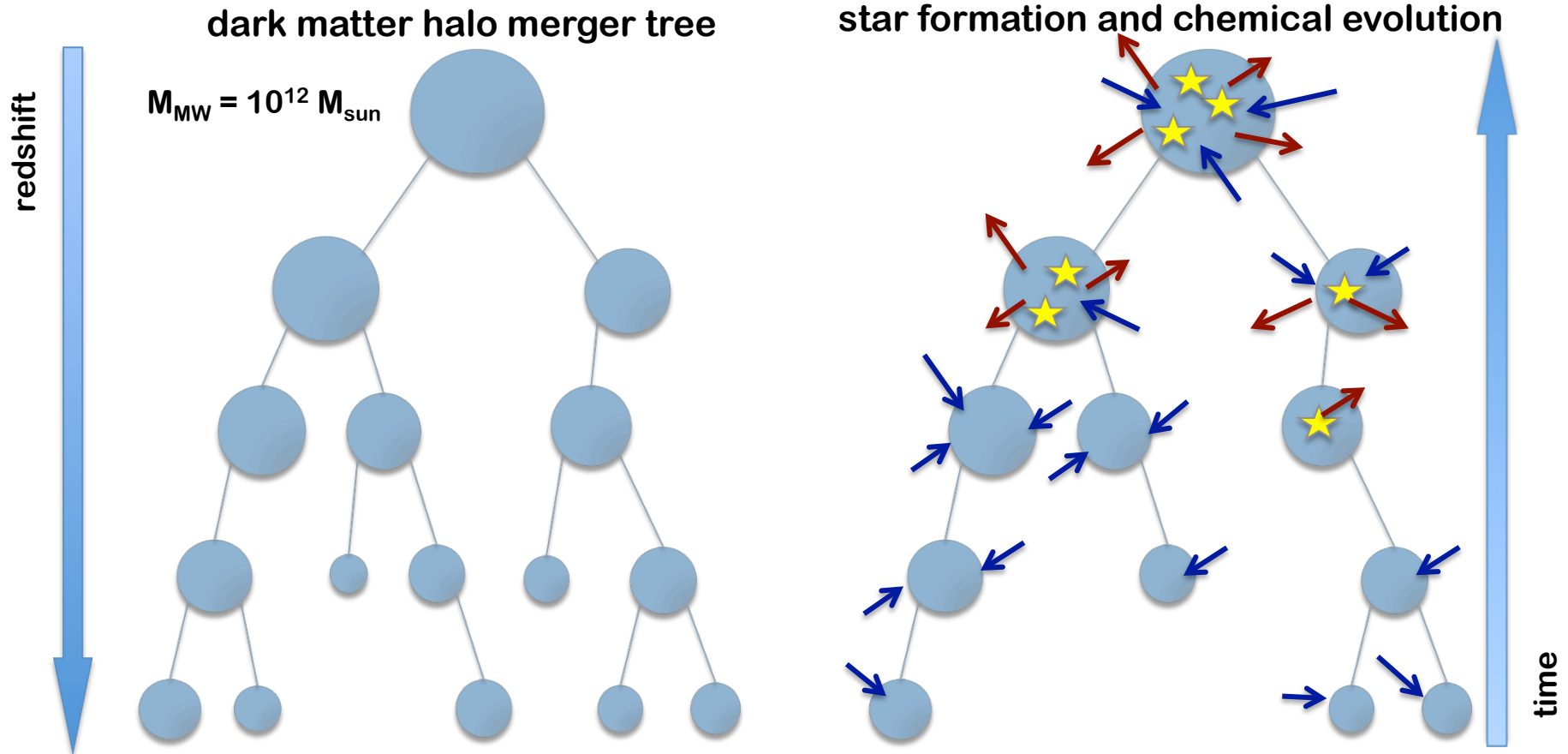
Salvadori et al. 2007, 2008, 2009; Valiante et al. 2011, 2014; de Bressan et al. 2014

GAMETE

Galaxy MErger Tree and Evolution

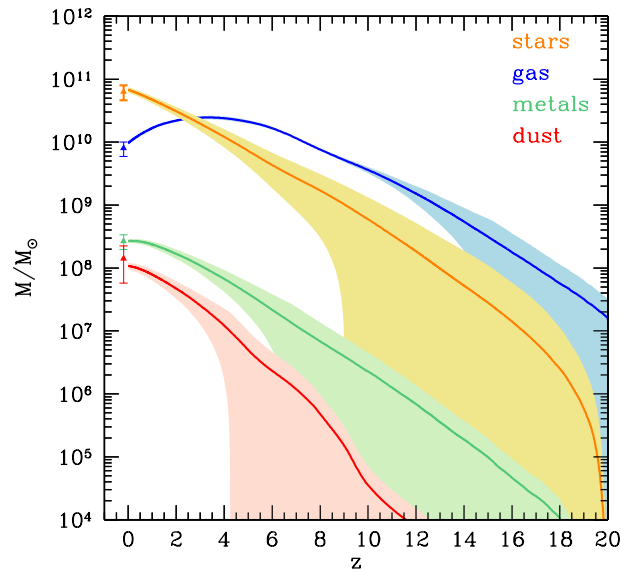


Salvadori et al. 2007, 2008, 2009; Valiante et al. 2011, 2014; de Bressan et al. 2014

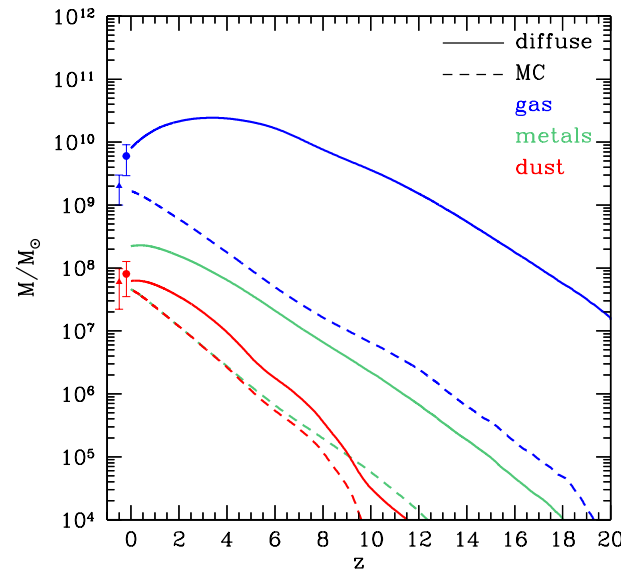


The MW and its dusty progenitors

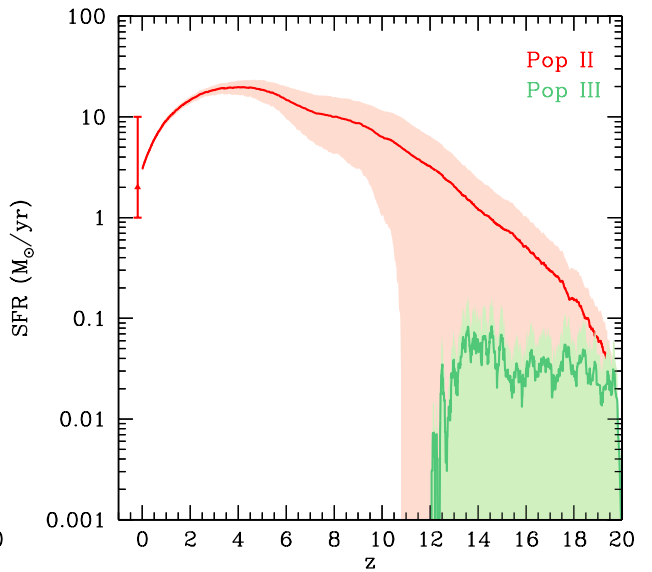
global properties of the MW



2-phase structure of the ISM



Pop III and Pop II SFRs



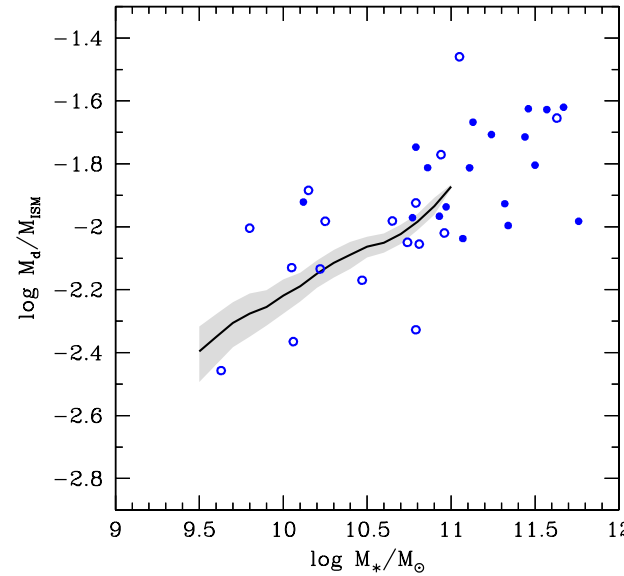
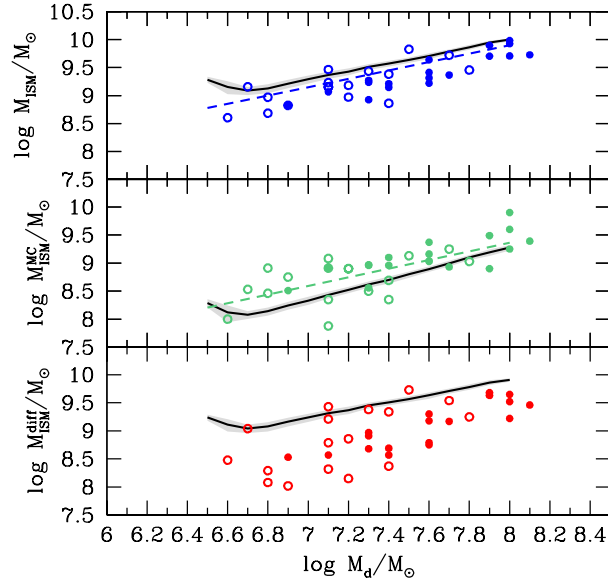
— average over 50 independent merger trees

■ $1-\sigma$

The MW and its dusty progenitors

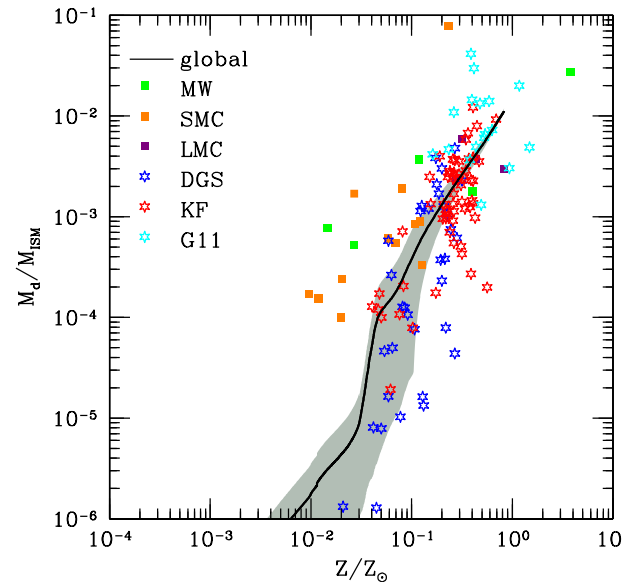
de Bennassuti et al 2014

gas and dust scaling relations



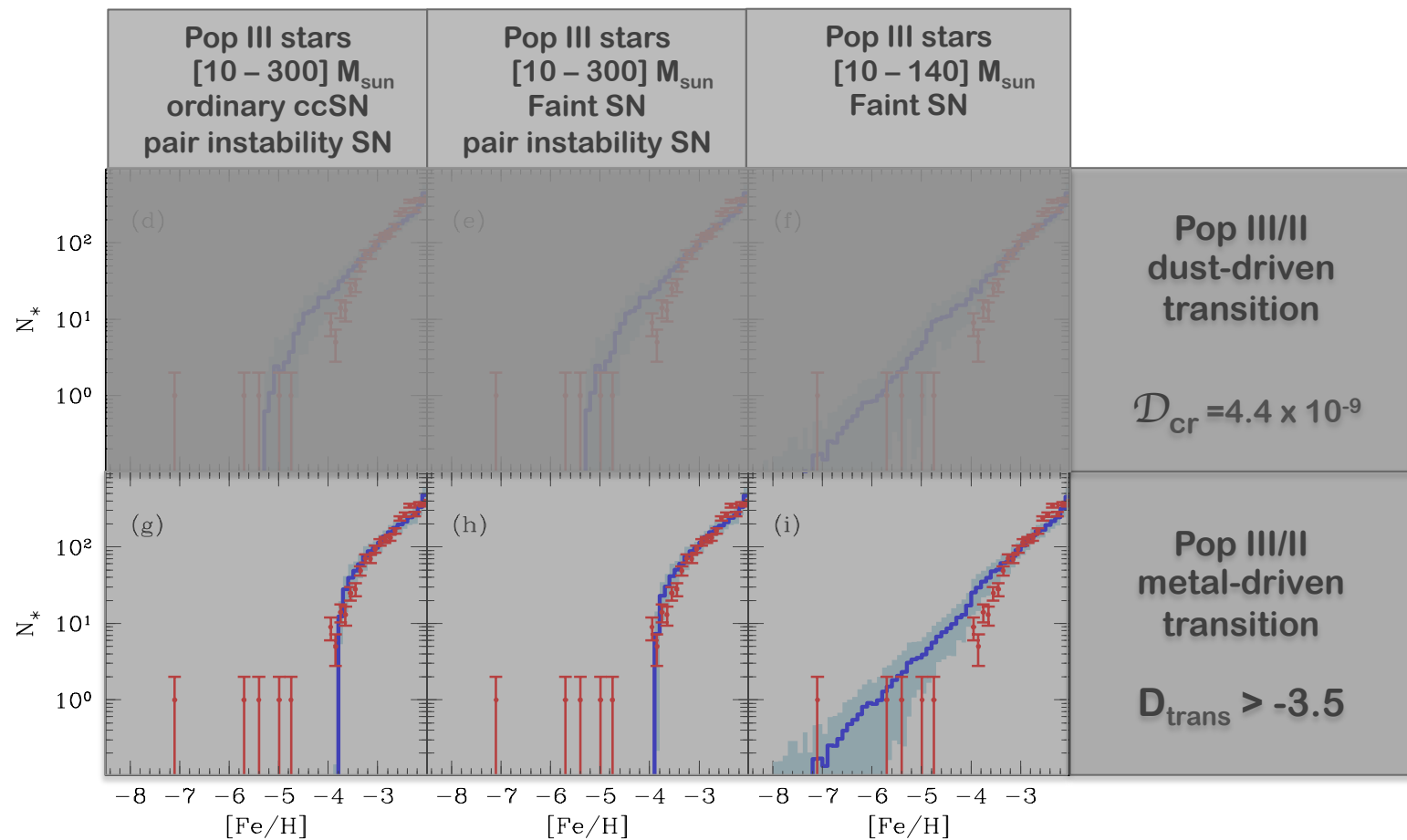
data points:
sample of local
Virgo galaxies
Corbelli et al. (2012)

dust-to-gas ratio vs metallicity



data points:
sample of GRB hosts
 $0.1 < z < 6.3$ Zafar & Watson (2013)
Local dwarfs Galametz et al. (2011)
Madden et al. (2013),
Remy-Ruyer et al. (2014)

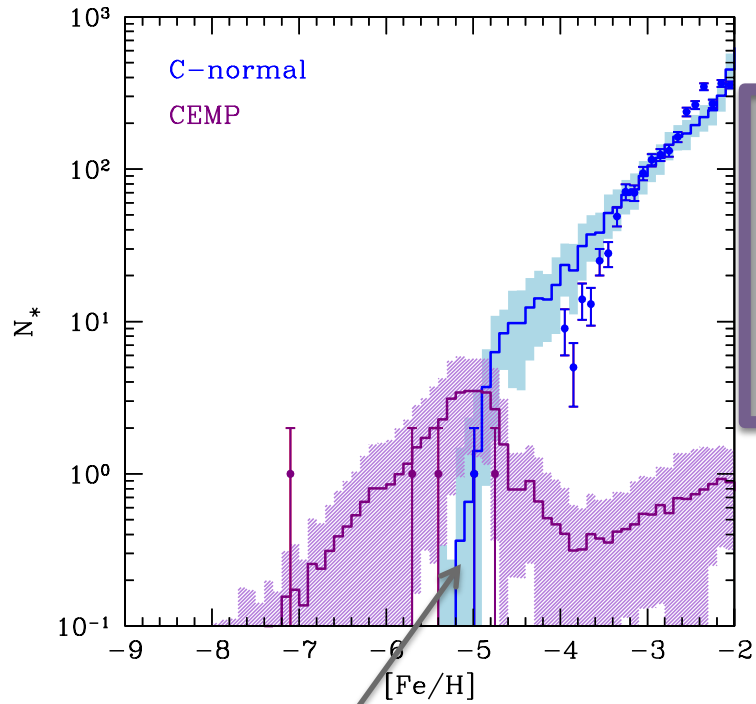
The low-[Fe/H] tail of the MDF



Pop III stars IMF $\rightarrow [10-140] M_{\text{sun}}$ and explode as faint SN

Pop III/II transition criterium \rightarrow degenerate with the Pop III IMF

Metallicity distribution of C-rich stars

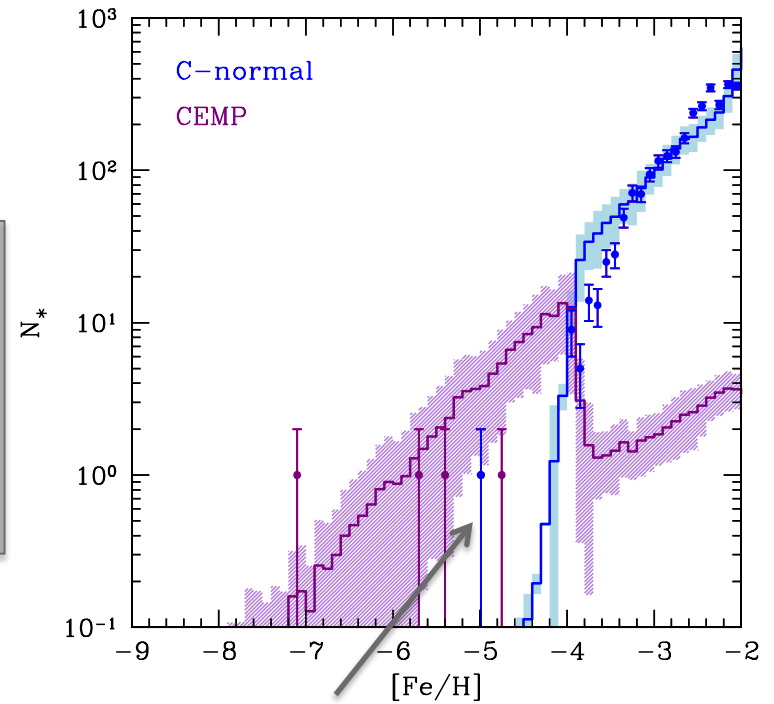


Pop III/II
dust-driven
transition

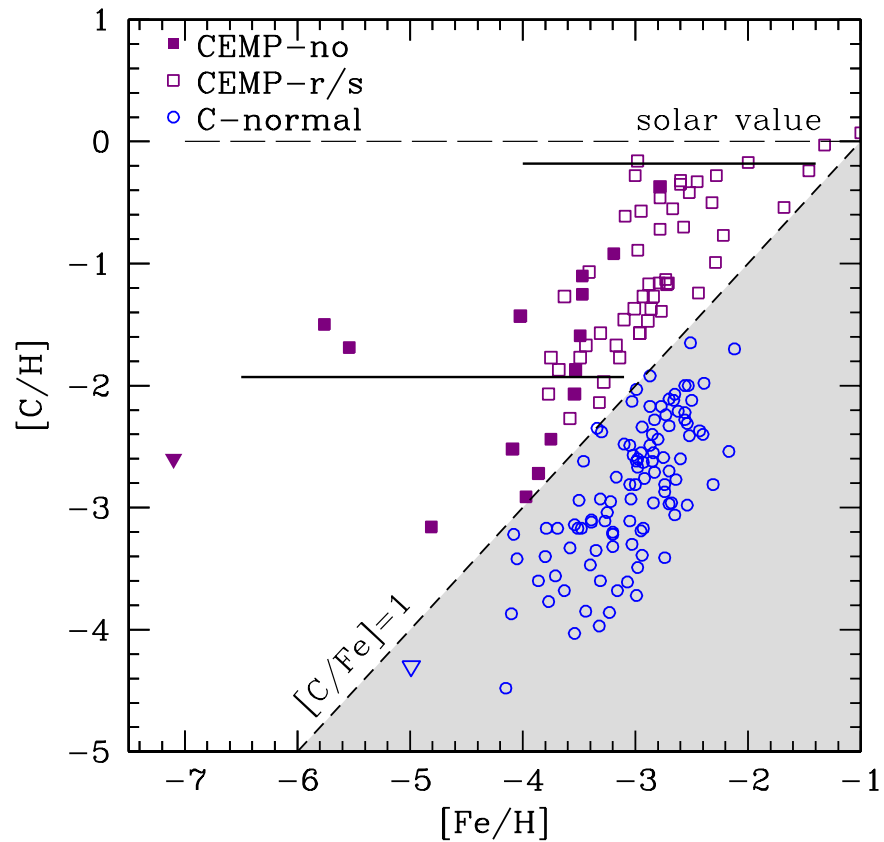
$$D_{\text{cr}} = 4.4 \times 10^{-9}$$

Pop III/II
metal-driven
transition

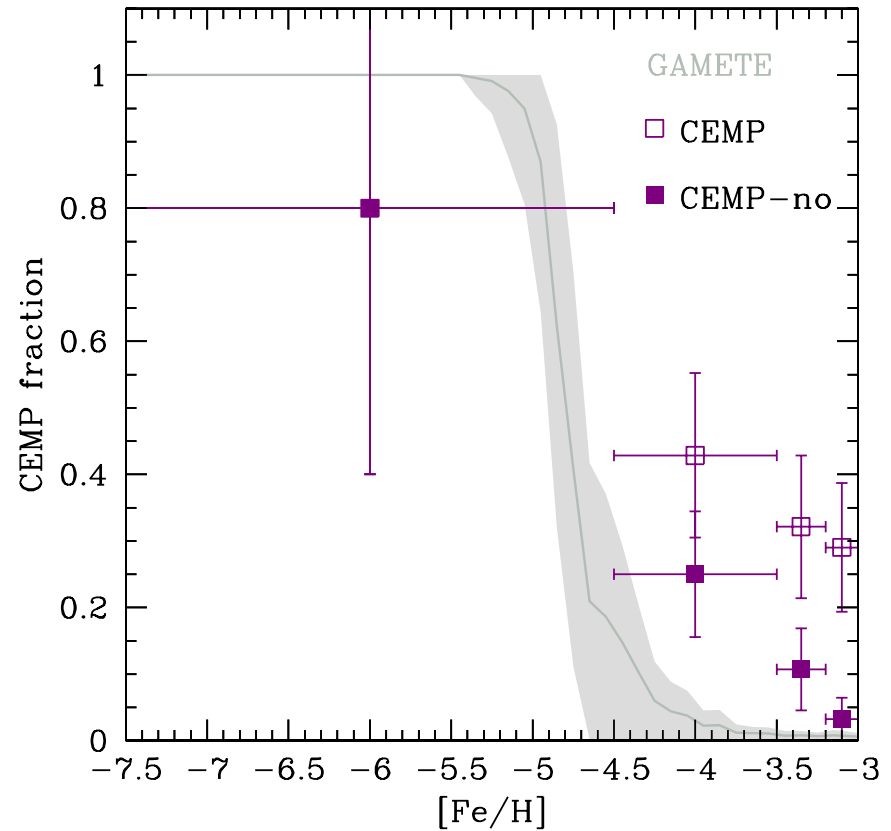
$$D_{\text{trans}} > -3.5$$



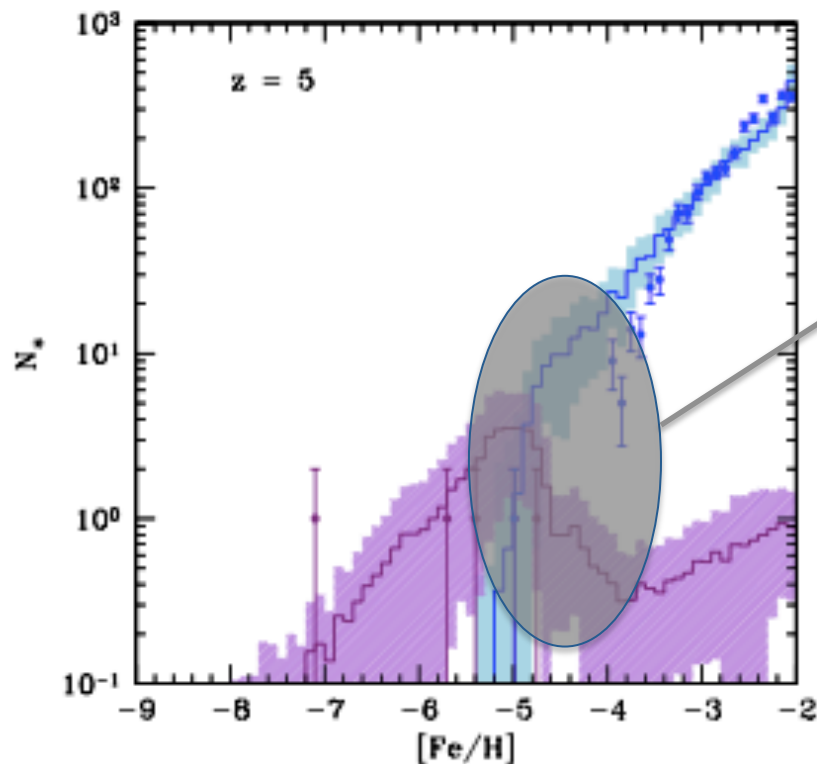
Relative fraction of C-rich and C-normal stars



data points from Yong et al. (2013)



When do the low- $[\text{Fe}/\text{H}]$ tail of the MDF of C-rich and C-normal stars form?

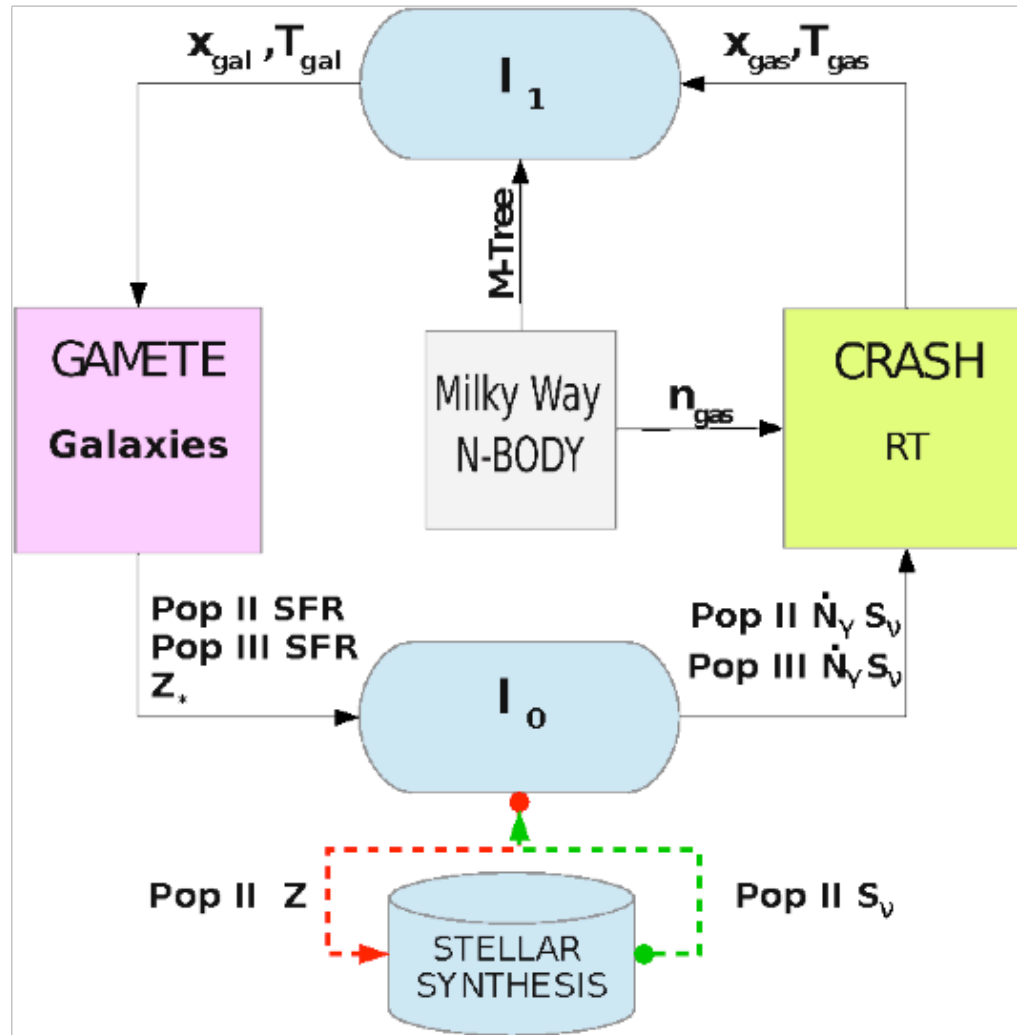


the “excess” stars are predicted to form at $15 < z < 5$

interplay between chemical and radiative feedback effects

Galaxy formation with radiative and chemical feedback

GAMESH, a new pipeline integrating the latest release of cosmological radiative transfer code CRASH (Graziani+ 2013) with the semi-analytic model of galaxy formation GAMETE, powered by an N-body simulation (Salvadori+2010, Kawata+2010)



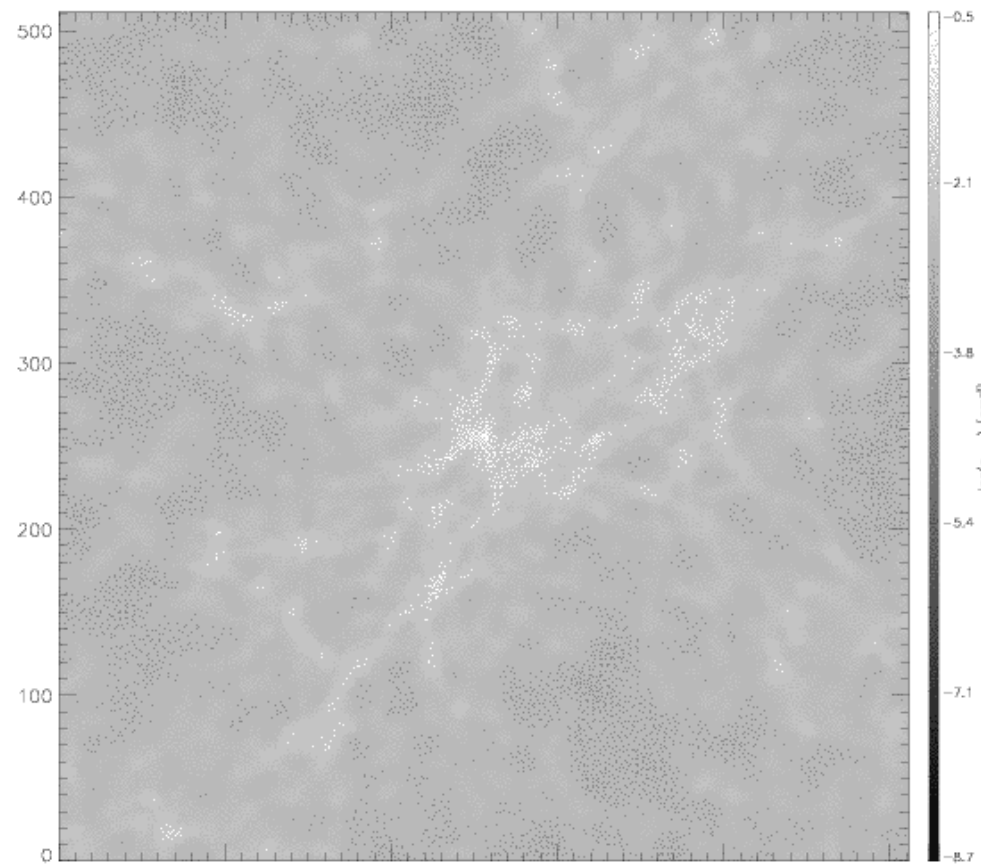
The cosmic assembly of the Milky Way

N-body simulation of a MW-sized halo in Planck cosmology

GCD+ code with multi-resolution technique (Kawata & Gibson 03):

Low-res spherical region of $R_l \sim 20 h^{-1} \text{ Mpc}$ taken from a low-res cosmological simulation

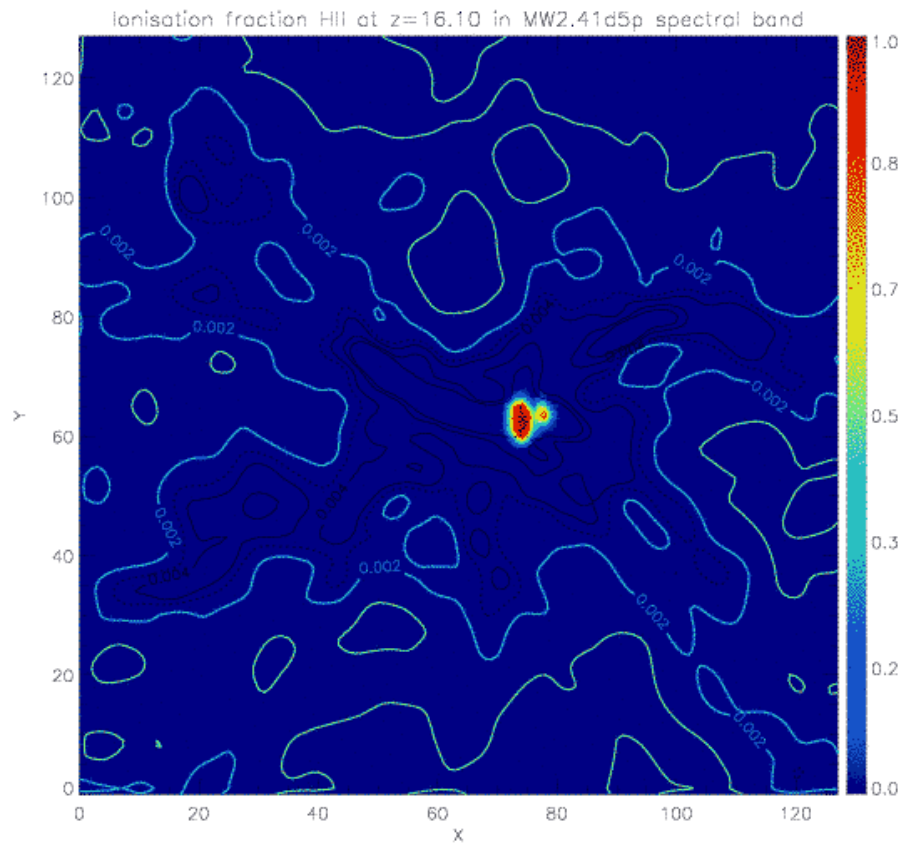
High-res spherical region of $R_h \sim 2 h^{-1} \text{ Mpc}$ with $M_p = 3.4 \times 10^5 M_{\text{sun}}$



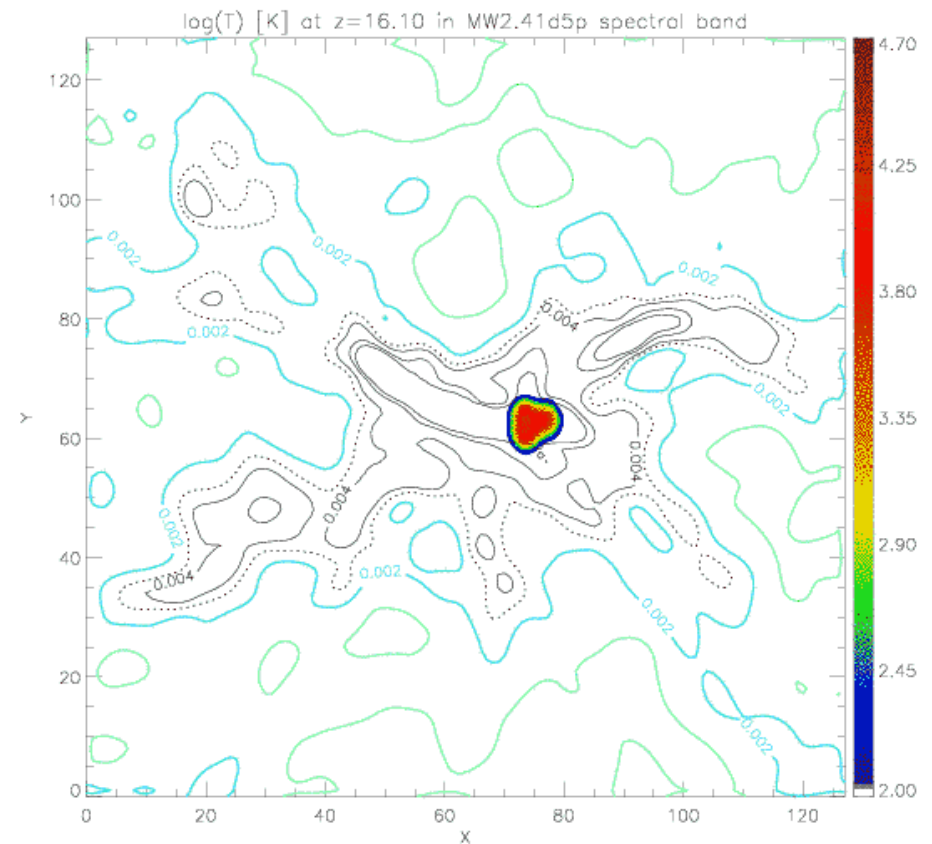
$z=20.38$

The Milky Way reionisation simulation

redshift evolution of the HII fraction



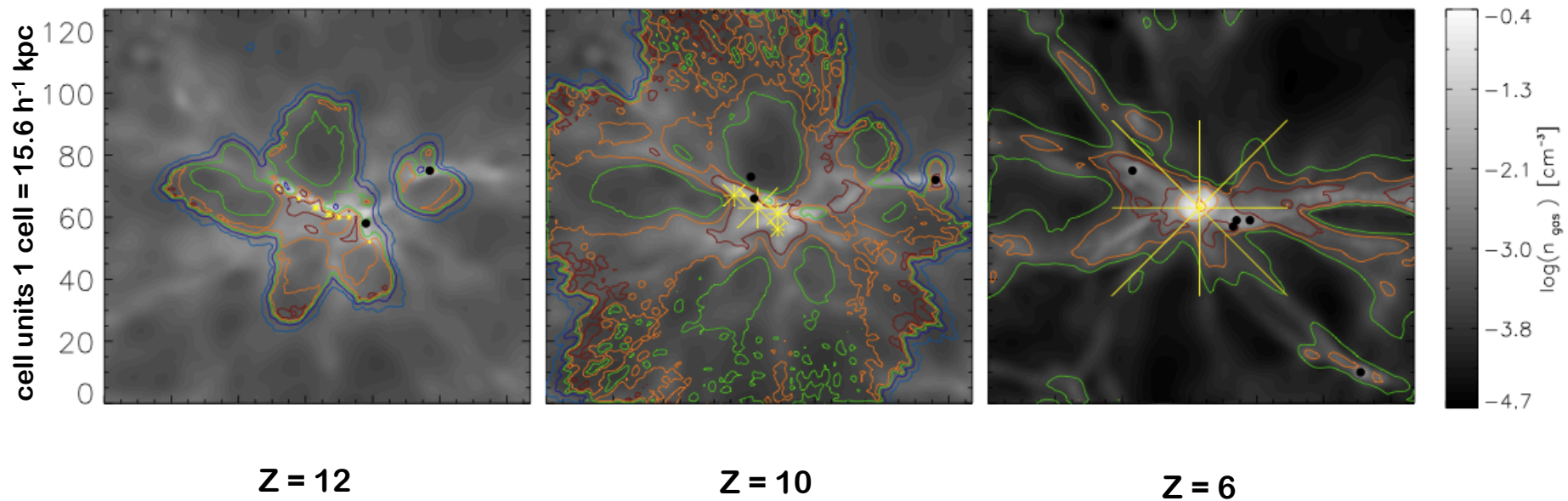
and of the gas temperature



Slice cuts (distances in cell units 1 cell = $15.6 h^{-1}$ kpc)

The Milky Way reionisation simulation

effects of inhomogeneous radiative feedback



Temperature contours:

$T \sim 100, 4 \times 10^3, 10^4, 1.3 \times 10^4, 1.5 \times 10^4 \text{ K}$

Summary

- ★ the Pop III IMF is likely to be top-heavy and characterized by masses of 10s – 1000s M_{sun}
- ★ metals and dust grains produced by the first Pop III SNe have important effects on the stellar mass scales
- ★ dust grains condensed in the ejecta of the first SN allow the formation of the first low mass stars $\leq 1 M_{\text{sun}}$ at $Z_{\text{cr}} > 10^{-6} Z_{\text{sun}}$
- ★ stellar archaeology is a fundamental benchmark for theoretical models