



<b>Publication Year</b>	2015
<b>Acceptance in OA</b>	2020-03-11T10:09:17Z
<b>Title</b>	Gas-phase Oxygen Abundances and Radial Metallicity Gradients in the Two nearby Spiral Galaxies NGC 7793 and NGC 4945
<b>Authors</b>	STANGHELLINI, Letizia, MAGRINI, LAURA, CASASOLA, VIVIANA
<b>Publisher's version (DOI)</b>	10.1088/0004-637X/812/1/39
<b>Handle</b>	<a href="http://hdl.handle.net/20.500.12386/23198">http://hdl.handle.net/20.500.12386/23198</a>
<b>Journal</b>	THE ASTROPHYSICAL JOURNAL
<b>Volume</b>	812

## GAS-PHASE OXYGEN ABUNDANCES AND RADIAL METALLICITY GRADIENTS IN THE TWO NEARBY SPIRAL GALAXIES NGC 7793 AND NGC 4945

LETIZIA STANGHELLINI<sup>1</sup>, LAURA MAGRINI<sup>2</sup>, AND VIVIANA CASASOLA<sup>2,3</sup><sup>1</sup>National Optical Astronomy Observatory, Tucson, AZ 85719, USA; [lstanghellini@noao.edu](mailto:lstanghellini@noao.edu)<sup>2</sup>INAF—Osservatorio Astrofisico di Arcetri, Largo E. Fermi, 5, I-50125 Firenze, Italy; [laura@arcetri.astro.it](mailto:laura@arcetri.astro.it), [casasola@arcetri.astro.it](mailto:casasola@arcetri.astro.it)<sup>3</sup>INAF—Istituto di Radioastronomia & Italian ALMA Regional Center, Bologna, Italy

Received 2015 March 23; accepted 2015 August 3; published 2015 October 6

## ABSTRACT

Gas-phase abundances in H II regions of two spiral galaxies, NGC 7793 and NGC 4945, have been studied to determine their radial metallicity gradients. We used the strong-line method to derive oxygen abundances from spectra acquired with GMOS-S, the multi-object spectrograph on the 8 m Gemini South telescope. We found that NGC 7793 has a well-defined gas-phase radial oxygen gradient of  $-0.321 \pm 0.112$  dex  $R_{25}^{-1}$  (or  $-0.054 \pm 0.019$  dex  $\text{kpc}^{-1}$ ) in the galactocentric range  $0.17 < R_G/R_{25} < 0.82$ , not dissimilar from gradients calculated with direct abundance methods in galaxies of similar mass and morphology. We also determined a shallow radial oxygen gradient in NGC 4945,  $-0.253 \pm 0.149$  dex  $R_{25}^{-1}$  (or  $-0.019 \pm 0.011$  dex  $\text{kpc}^{-1}$ ) for  $0.04 < R_G/R_{25} < 0.51$ , where the larger relative uncertainty derives mostly from the larger inclination of this galaxy. NGC 7793 and NGC 4945 have been selected for this study because they are similar, in mass and morphology, to M33 and the Milky Way, respectively. Since at zeroth order we expect the radial metallicity gradients to depend on mass and galaxy type, we compared our galaxies in the framework of radial metallicity models best suited for M33 and the Galaxy. We found a good agreement between M33 and NGC 7793, pointing toward similar evolution for the two galaxies. We notice instead differences between NGC 4945 and the radial metallicity gradient model that best fits the Milky Way. We found that these differences are likely related to the presence of an active galactic nucleus combined with a bar in the central regions of NGC 4945, and to its interacting environment.

*Key words:* galaxies: abundances – galaxies: individual (NGC 7793, NGC 4945) – H II regions

*Supporting material:* machine-readable tables

## 1. INTRODUCTION

The metallicity of galaxies reveals their chemical evolution through cosmic time, and it varies according to star formation history, gas accretion during the early evolutionary stages, and subsequent gas inflows and outflows. The gas-phase metallicity has been studied in the Milky Way and nearby spiral galaxies through abundance analysis of H II regions (e.g., Vila-Costas & Edmunds 1992; Sánchez et al. 2014), disclosing that a radial metallicity gradient across the galactic disk is almost invariably negative (i.e., higher abundances near the galactic center). The oxygen metallicity gradient is a key constraint to models of chemical evolution. It is in fact essential to pin down this value in the present-day spiral galaxies to assess the gas infall processes. Metal-poor gas infall into the galaxy potential well would lower the central metallicity. Gas accretion through interactions with nearby galaxies would change the gradient as well, compromising the metallicity pattern achieved with stellar evolution and recycling. Even the sophisticated, cosmological-compatible, chemical evolution models of spiral galaxies (e.g., Rahimi et al. 2011; Pilkington et al. 2012; Gibson et al. 2013) cannot give such constraints ab initio. Observational constraints are essential to advance in this field.

In the recent years, a remarkable body of H II region abundances has become available to show that resolved spiral galaxies display negative gas-phase radial oxygen gradients. A few galaxies have been studied through direct abundance analysis, which is based on the determination of the electron temperature in the regions from the auroral emission lines. While a discrepancy has been noted between electron temperatures derived from auroral and recombination lines

(e.g., Peña 2011), this method gives, arguably, the best sets of abundances published to date, resulting in shallow radial oxygen gradients with slopes in a narrow range ( $-0.02$  to  $-0.09$  dex  $\text{kpc}^{-1}$ ) for M33 (Magrini et al. 2010), NGC 300 (Bresolin et al. 2009), M81 (Stanghellini et al. 2014), and NGC 628 and NGC 2403 (Berg et al. 2013). The database of galaxies whose H II region oxygen abundance is known through direct abundance analysis is limited, thus there was reason to continue this type of study in a variety of galaxy types. It is also essential to perform abundance analysis in galaxies that are *twins* to the ones already well studied. In fact, at first glance, the gradient differences across galaxies can be imputed to the galaxy mass, its morphology, or its situation within a group. As an example, Stanghellini et al. (2014) found that M81 had the steepest gradient slope of all galaxies studied through H II direct abundance analysis, arguably due to its environment.

In order to augment the sample of spiral galaxies whose resolved H II regions can be used to constrain the metallicity gradients, we embarked on a series of multi-object spectrographic studies to detect H II oxygen abundances in a variety of nearby spiral galaxies. In this paper we present a study of the Sculptor galaxy NGC 7793 and of the Centaurus galaxy NGC 4945. NGC 7793 apparently has sub-solar metallicity ( $0.6 Z_{\odot}$ , Van Dyk et al. 2012), determined only locally from H II regions. With a distance of  $3.91 \pm 0.41$  Mpc (Karachentsev et al. 2003), apparent diameter of 10 arcmin, and intermediate inclination, this galaxy is an ideal target for GMOS multi-object spectroscopy. NGC 7793 is morphologically very similar to M33: it also lacks a defined bulge and has similar mass and size. Our other target is the less studied NGC 4945, referred to as a Milky Way twin for its similarity with our

**Table 1**  
Basic Parameters of the Target Galaxies and Their Twins

	NGC 7793	M33	NGC 4945	MW	Ref.
Type	SA(s)d	SA(s)cd	SB(s)cd	SAB(rs)bc	<sup>a</sup>
$M_V$	$-20.01 \pm 0.24$	$-19.4$	$-20.6$	$-20.9$	<sup>b</sup>
$M$ ( $10^{10} M_\odot$ )	0.32	0.49	8–15	21	<sup>c</sup>
$\alpha_{c,2000}$	23:57:49.8	01:33:50.9	13:05:27.5	...	<sup>b</sup>
$\delta_{c,2000}$	$-32:35:27.7$	30:39:36.8	$-49:28:05.6$	...	<sup>b</sup>
$R_{25}$ (arcmin) <sup>d</sup>	$5.24 \pm 0.24$	$30.8 \pm 0.7$	$11.72 \pm 0.27$	...	<sup>a</sup>
Dist. (Mpc)	$3.91 \pm 0.41$	840	$3.82 \pm 0.31$	...	<sup>e</sup>
PA (deg)	$99 \pm 1$	$23 \pm 5$	$43 \pm 1$	...	<sup>f</sup>
$i$ (deg)	$53.7 \pm 0.2$	54	$78 \pm 3$	...	<sup>f</sup>

**Notes.**

<sup>a</sup> Hyperleda database and references therein.

<sup>b</sup> NED database and references therein.

<sup>c</sup> Leroy et al. (2008), Corbelli et al. (2014), Ables et al. (1987), Dahlem et al. (1993), and Kafle et al. (2012).

<sup>d</sup> For the MW we used  $R_{25} = 11.5$  kpc from de Vaucouleurs & Piece (1987).

<sup>e</sup> Karachentsev et al. (2003), Freedman et al. (1991), Lin et al. (2011).

<sup>f</sup> Corbelli & Schneider (1997), Ables et al. (1987), and Dahlem et al. (1993).

Galaxy, due to its mass, size, and morphological type. NGC 4945 is very inclined on the plane of the sky and has a heliocentric distance ( $3.82 \pm 0.31$  Mpc, Lin et al. 2011) similar to that of NGC 7793. The basic physical parameters of both galaxies, and those of their twins, are given in Table 1.

We describe the observations and spectral analysis in Section 2. In Sections 3 and 4 we present the detailed flux and abundance analysis, both for NGC 7793 and NGC 4945. The study of radial metallicity gradients is given in Section 5. The discussion in Section 6 includes a comparison of the strong-line and direct abundances in M33 and M81, and the radial metallicity gradients in NGC 7793 and NGC 4945 compared with chemical evolution models. Our conclusions are given in Section 7.

## 2. OBSERVATIONS AND SPECTRAL ANALYSIS

In Table 2 we give the GMOS-S observing logs. The NGC 7793 images were acquired in 2012 September and October, while spectroscopic observations of this galaxy have been acquired in 2013 July and August. The H II regions were identified on the images by means of the onband/offband technique, utilizing continuum-subtracted H $\alpha$  images. We built the MOS mask by selecting targets that were bright in the H $\alpha$  continuum-subtracted frames. H $\alpha$  images of NGC 4945 have been acquired in 2013 March, while spectroscopy was obtained in June and July of the same year. We have also acquired [O III] 5007 Å continuum-subtracted images of both galaxies as part of the original program, aimed at both planetary nebula (PN) and H II region spectroscopy. [O III] images can be used to determine PN contamination in the frames. As it turned out, all H II regions observed were marginally extended in the images, thus they cannot be PNe. The [O III] images will be used in the future to build MOS masks for PN spectroscopy.

In Figures 1 and 2 we show the images of NGC 7793 and NGC 4945. These figures have been obtained from continuum-subtracted H $\alpha$  images. We mark the H II regions selected for spectral analysis in these images. The spatial distribution of the selected H II regions, in each galaxy, is adequate for radial metallicity gradient analysis.

The NGC 7793 galaxy has an inclination similar to that of NGC 2403, and to both NGC 300 and M33. Its gradient can be

**Table 2**  
Observing Log

Program	Target	Type	$t_{\text{exp}}$ (hr)
GS2012BQ082	NGC 7793	Imaging <sup>a</sup>	1.14
GS2012BQ046	NGC 4945, F1	Imaging <sup>a</sup>	1.13
GS2012BQ046	NGC 4945, F2	Imaging <sup>a</sup>	1.13
GS2013AQ046	NGC 7793	MOS B600	3.36 <sup>b</sup>
GS2013AQ046	NGC 7793	MOS R400	2.26
GS2013AQ046	NGC 4945, F1	MOS B600	2.26
GS2013AQ046	NGC 4945, F1	MOS R400	2.23
GS2013AQ046	NGC 4945, F2	MOS B600	2.29
GS2013AQ046	NGC 4945, F2	MOS R400	3.52 <sup>b</sup>

**Notes.**

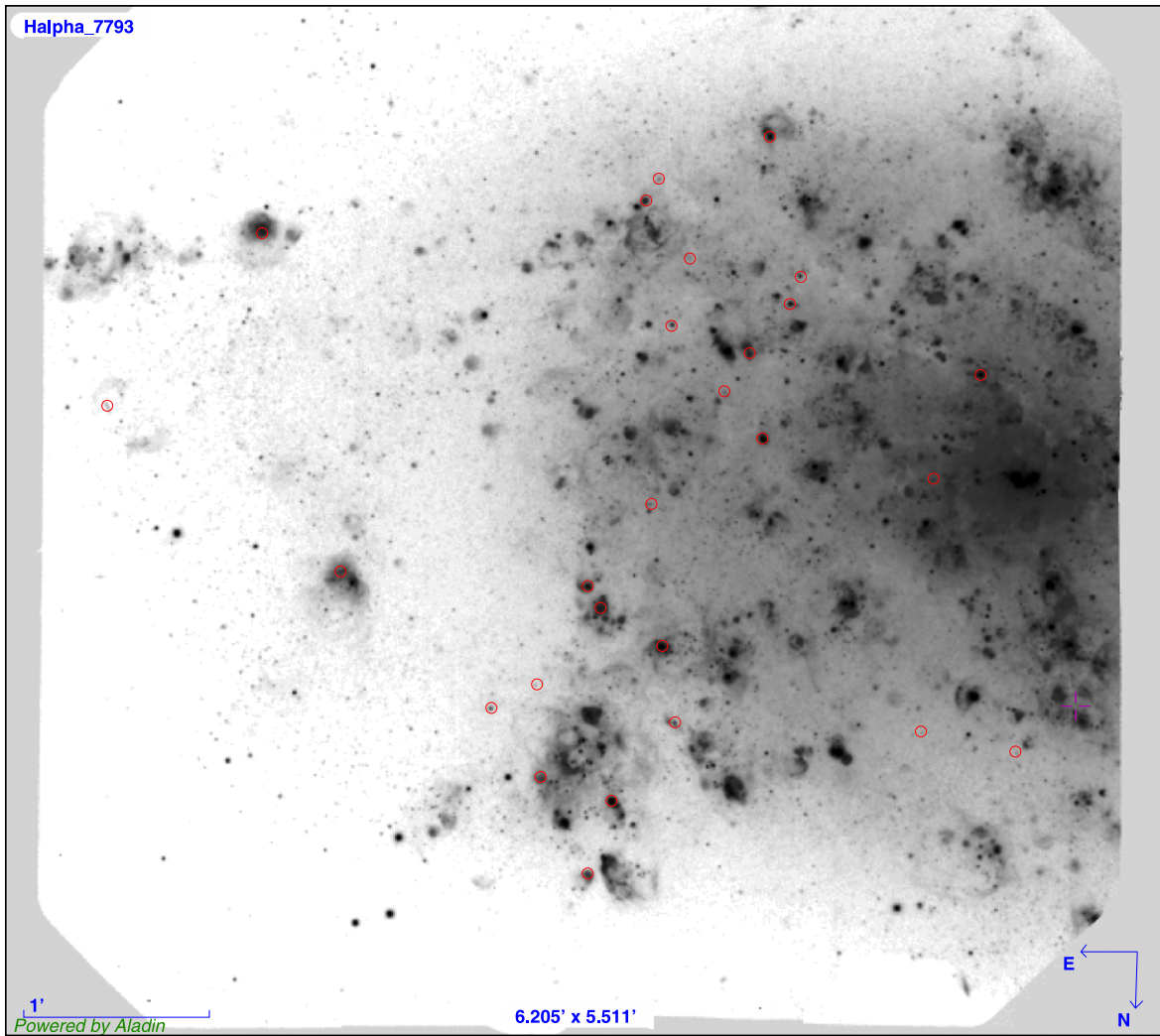
<sup>a</sup> Imaging includes [O III]  $\lambda 5007$ , H $\alpha$ , and continuum filters.

<sup>b</sup> Few low quality observations were repeated. Total time includes repeats.

reasonably explored through just one GMOS field that includes about half of the galactic face. In order to establish the metallicity gradients based on the observed surface of NGC 7793, we have to assume no or little azimuthal variation of gas-phase oxygen, which is consistent with the low metallicity scatter of  $\sim 0.05$  dex measured in various spiral galaxies to date (e.g., Bresolin 2009, 2011).

On the other hand, NGC 4945 is nearly edge-on, and its projection results are elongated on the plane of the sky, so that we acquired two MOS fields of this galaxy, in order to detect suitable H II region spectroscopy for metallicity gradients.

Spectroscopy of 27 H II regions in NGC 7793 and 33 H II regions in NGC 4945 was obtained with dark sky background (SB50), high cloud coverage (CC70), and poor image quality (IQ70), which yielded to lower quality data than requested for the originally planned science goal, i.e., to determine direct abundances. Our preliminary data analysis confirmed that the data were adequate for strong-line analysis, with a signal-to-noise ratio (S/N) of  $> 3$  in all diagnostic lines, unless specifically noted (see Table 4). Even with lowered observing conditions, it is worth publishing the present data sets, including line fluxes and their uncertainties, and the strong-line abundances.



**Figure 1.**  $H\alpha$  image of the NGC 7793 field. The galaxy center is to the center right. The (red) circles represent the studied  $H\text{ II}$  regions.

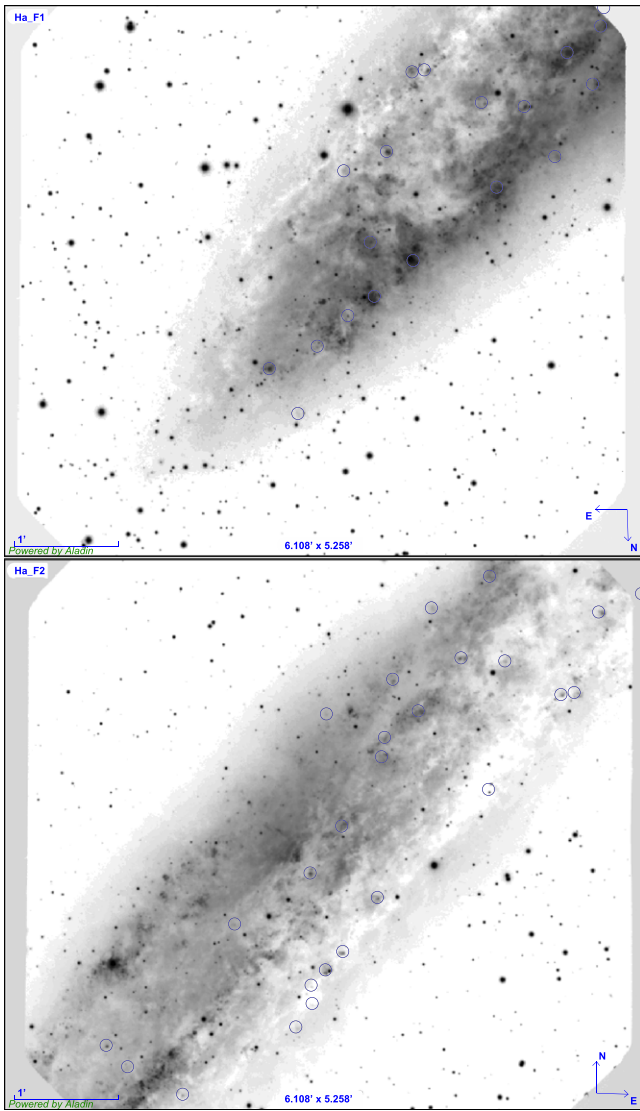
Our observational design is identical to that used in Stanghellini et al. (2014) for the  $H\text{ II}$  regions of M81, and details can be found therein. We employed both the R400 and B600 gratings in order to obtain the full spectral domain between 3200 and 9000 Å, which is needed for the science goals. We used 1'' slitlet widths with  $2 \times 2$  binning. Data analysis has been performed with the *Gemini* IRAF routines, as in Stanghellini et al. (2014). Sky subtraction (and, more correctly, galactic background subtraction) was performed using extended slit margins during spectral extraction, which was possible, having designed masks with slitlet lengths larger than the spatial target dimensions. Our target slitlets are 4''–10'' in length.

### 3. $H\text{ II}$ REGION SPECTROSCOPY

In Tables 3 and 4 we list the regions observed in NGC 7793 and NGC 4945, respectively. Preliminary spectral inspection of NGC 7793 showed that S/N was very low in regions 4, 7, and 10, so their fluxes cannot be used for abundance determination. A few regions (5, 13, and 27) have low quality spectra, and thus only suitable for limited analysis. In Tables 3 and 4 we also give the galactocentric distances of the regions, both in terms of the isophotal radius (Column 4) and in kpc (Column

5). The uncertainties in the galactocentric distances have been determined with error propagation, including the inclination, position angle, and either the isophotal radius (for  $R_G$  in terms of  $R_{25}$ ) or the galaxy distance (for  $R_G$  in kpc) uncertainties.

In order to confirm that the observed targets are indeed  $H\text{ II}$  regions we have used the BPT diagram, which is based on Balmer, and on [N II], [O III], and [S II], emission lines (Baldwin et al. 1981; Kniazev et al. 2008). In Figure 3 we show the [O III]  $\lambda 5007/H\beta$  versus [N II]  $\lambda 6584/H\alpha$  diagnostic plot for the observed regions in both galaxies. We plot all regions except regions 4, 7, and 10 in NGC 7793. All flux ratios are plotted with their formal errors, propagated from the individual flux uncertainties. Most NGC 7793 targets, indicated with filled circles in the figure, are located below the  $I_{5007}/I_{H\beta} > 0.61(I_{6584} - 0.47) + 1.19$  curve (Kniazev et al. 2008), confirming their  $H\text{ II}$  nature. For this galaxy, a few regions are located on or above the curve. Of these, we can confirm that NGC 7793 regions 16 and 25 are likely  $H\text{ II}$  regions by using the [S II] line diagnostic from Kniazev et al. (2008), where  $\log(I_{6717}/I_{H\alpha}) < 0.63 \log(I_{6584}/I_{H\alpha}) - 0.55$ . On the other hand, regions 14, 17, 23, and 26 in NGC 7793 could be PNe based on the [S II] diagnostics, and are excluded from further analysis. All NGC 4945  $H\text{ II}$  regions studied here are located



**Figure 2.**  $H\alpha$  images of the two fields of NGC 4945. The (blue) circles represent the studied  $H\text{ II}$  regions.

below the BPT curve, except region 20 of field 2, which we also exclude from gradient analysis.

Observations of the complete optical spectra were achieved using two gratings per MOS field, specifically, B600 and R400. Since the same emission lines could occasionally be measured in both gratings, the comparison across gratings is a sanity check to determine whether the data reduction has been performed properly. Also, scaling the red and blue spectra allow us to use diagnostics across the spectra, for example, to determine line extinction. In Figure 4 we show the comparison of the bright lines across gratings, where we plotted the logarithmic fluxes detected in the R400 versus those in the B600 grating. Both galaxies, and all regions with common lines across gratings, have been included in this plot (we did exclude regions 4, 7, and 10 of NGC 7793; see above). We used the brightest common line in each region (typically  $H\alpha$ ,  $[\text{O III}] \lambda 5007$ , or  $[\text{N II}] \lambda 6584 \text{ \AA}$ ) to make the grating comparison. We found that the line fluxes across gratings are generally well correlated in all fields studied. By excluding targets of uncertain nature and those with low S/N spectra, we obtain the linear correlation index  $R_{xy} = 0.98$  (in the logs) in NGC

**Table 3**  
Positions and Distances of  $H\text{ II}$  Regions in NGC 7793

Region	$\alpha_{2000}$	$\delta_{2000}$	$R_G/R_{25}$	$R_G$ (kpc)
2	23:58:00.51	-32:33:20.09	$0.87 \pm 0.04$	$5.20 \pm 0.22$
3	23:57:58.64	-32:34:33.27	$0.50 \pm 0.02$	$3.01 \pm 0.09$
4 <sup>a</sup>	23:58:01.84	-32:34:20.97	$0.66 \pm 0.02$	$3.93 \pm 0.11$
5 <sup>b</sup>	23:57:58.32	-32:34:09.05	$0.59 \pm 0.02$	$3.53 \pm 0.13$
6	23:58:01.73	-32:33:51.02	$0.77 \pm 0.03$	$4.60 \pm 0.16$
7 <sup>a</sup>	23:57:52.05	-32:34:05.74	$0.46 \pm 0.02$	$2.75 \pm 0.14$
8	23:58:02.96	-32:34:13.66	$0.72 \pm 0.02$	$4.32 \pm 0.12$
9	23:57:59.91	-32:33:43.89	$0.75 \pm 0.03$	$4.46 \pm 0.18$
10 <sup>a</sup>	23:57:49.65	-32:33:59.58	$0.47 \pm 0.02$	$2.79 \pm 0.14$
11	23:58:06.81	-32:34:57.25	$0.75 \pm 0.01$	$4.46 \pm 0.05$
12	23:58:00.54	-32:34:52.47	$0.51 \pm 0.01$	$3.05 \pm 0.06$
13 <sup>b</sup>	23:58:00.19	-32:34:45.73	$0.52 \pm 0.01$	$3.08 \pm 0.07$
14 <sup>c</sup>	23:58:12.72	-32:35:50.38	$0.93 \pm 0.01$	$5.57 \pm 0.01$
15	23:57:56.08	-32:35:39.77	$0.26 \pm 0.00$	$1.53 \pm 0.00$
16 <sup>d</sup>	23:57:51.73	-32:35:26.95	$0.08 \pm 0.00$	$0.48 \pm 0.00$
17 <sup>c</sup>	23:57:58.93	-32:35:19.10	$0.39 \pm 0.00$	$2.31 \pm 0.02$
18	23:58:08.79	-32:36:46.10	$0.82 \pm 0.01$	$4.91 \pm 0.02$
19	23:57:58.72	-32:37:03.34	$0.57 \pm 0.02$	$3.43 \pm 0.09$
20	23:57:59.07	-32:36:56.26	$0.55 \pm 0.01$	$3.30 \pm 0.08$
21	23:57:55.11	-32:36:32.10	$0.37 \pm 0.01$	$2.23 \pm 0.07$
22	23:57:50.55	-32:36:00.49	$0.17 \pm 0.01$	$1.03 \pm 0.05$
23 <sup>e</sup>	23:57:57.06	-32:35:55.05	$0.31 \pm 0.00$	$1.85 \pm 0.01$
24	23:57:55.39	-32:36:23.44	$0.34 \pm 0.01$	$2.05 \pm 0.05$
25 <sup>f</sup>	23:57:56.41	-32:36:07.16	$0.31 \pm 0.00$	$1.87 \pm 0.02$
26 <sup>f</sup>	23:57:57.92	-32:36:37.79	$0.46 \pm 0.01$	$2.72 \pm 0.05$
27 <sup>b</sup>	23:57:58.40	-32:36:16.24	$0.40 \pm 0.00$	$2.39 \pm 0.02$
28	23:57:55.90	-32:37:16.79	$0.59 \pm 0.02$	$3.53 \pm 0.13$

**Notes.**

<sup>a</sup> Very poor spectrum, not used for abundance analysis.

<sup>b</sup> Poor spectrum, low S/N, not included in gradients.

<sup>c</sup>  $H\text{ II}$  region nature possible, but it could also be a PN. On BPT boundary. Not included in gradients.

<sup>d</sup>  $H\text{ II}$  nature very probable. On BPT boundary. Not included in gradients.

<sup>e</sup>  $H\text{ II}$  region nature possible, but it could also be a PN. BPT outlier. Not included in gradients.

<sup>f</sup>  $H\text{ II}$  nature very probable. BPT outlier. Not included in gradients.

7793, and 0.995 and 0.991, respectively, for fields 1 and 2 in NGC 4945. We used the flux ratio of the brightest lines detected in both gratings to scale the red and blue fluxes. For regions with no lines in common across gratings, we used the average flux ratios from the same field to scale lines across gratings. The average flux ratio for NGC 7793 and for fields 1 and 2 of NGC 4945 are, respectively,  $\langle F_{B600}/F_{R400} \rangle = 1.388 \pm 0.556$ ,  $1.25 \pm 0.16$ , and  $1.09 \pm 0.22$ .

Line fluxes were measured on the reduced and scaled spectra with the IRAF routine *splot*. Flux uncertainties were carried over from these measurements. We determined extinction correction, following Osterbrock & Ferland's (2006) prescription for  $T_e = 10,000 \text{ K}$ , for most regions. In Tables 5 and 6 (machine-readable versions available) we list the measured emission lines scaled to  $H\beta = 100$ , respectively, for  $H\text{ II}$  regions in NGC 7793 and NGC 4945. We give name, logarithmic extinction correction, and  $H\beta$  flux first, then we list all emission lines by giving the wavelength (Column 1), line identification (Column 2), and observed flux (Column 3) and uncertainty (Column 4), and finally the de-reddened flux (Column 5). In a few cases the extinction turns out to be negative, and we set it to zero.

**Table 4**  
Positions and Distances of H II Regions in NGC 4945

Region	$\alpha_{2000}$	$\delta_{2000}$	$R_G/R_{25}$	$R$ (kpc)
Field 1				
1	13:05:43.31	-49:24:40.00	$0.41 \pm 0.02$	$5.34 \pm 0.31$
2 <sup>a</sup>	13:05:47.16	-49:24:08.30	$0.46 \pm 0.02$	$5.97 \pm 0.23$
3 <sup>a</sup>	13:05:50.08	-49:23:12.24	$0.58 \pm 0.03$	$7.61 \pm 0.44$
4	13:05:48.94	-49:23:50.64	$0.49 \pm 0.02$	$6.39 \pm 0.22$
5	13:05:51.75	-49:23:38.17	$0.51 \pm 0.01$	$6.67 \pm 0.09$
6	13:05:45.57	-49:24:19.49	$0.44 \pm 0.02$	$5.77 \pm 0.28$
7 <sup>a</sup>	13:05:45.79	-49:24:50.76	$0.38 \pm 0.00$	$4.90 \pm 0.03$
8	13:05:47.37	-49:25:31.45	$0.43 \pm 0.03$	$5.57 \pm 0.44$
9	13:05:44.85	-49:25:42.38	$0.36 \pm 0.02$	$4.68 \pm 0.30$
10 <sup>a</sup>	13:05:43.39	-49:26:28.10	$0.41 \pm 0.05$	$5.29 \pm 0.65$
11	13:05:36.77	-49:26:08.22	$0.23 \pm 0.01$	$3.02 \pm 0.16$
12	13:05:34.25	-49:26:39.06	$0.17 \pm 0.01$	$2.24 \pm 0.12$
Field 2				
1	13:05:15.92	-49:29:50.46	$0.23 \pm 0.01$	$3.01 \pm 0.12$
2	13:05:17.14	-49:30:02.91	$0.22 \pm 0.004$	$2.91 \pm 0.06$
3	13:05:20.38	-49:30:18.50	$0.34 \pm 0.04$	$4.43 \pm 0.56$
4	13:05:27.88	-49:28:11.78	$0.05 \pm 0.01$	$0.59 \pm 0.11$
5	13:05:27.07	-49:29:39.96	$0.43 \pm 0.07$	$5.60 \pm 0.97$
6	13:05:28.00	-49:29:26.86	$0.41 \pm 0.07$	$5.33 \pm 0.93$
7 <sup>a</sup>	13:05:31.86	-49:28:25.79	$0.31 \pm 0.06$	$3.98 \pm 0.72$
8	13:05:23.44	-49:28:40.83	$0.08 \pm 0.004$	$1.08 \pm 0.06$
9 <sup>a</sup>	13:05:28.82	-49:29:07.35	$0.35 \pm 0.06$	$4.61 \pm 0.82$
10 <sup>b</sup>	13:05:29.80	-49:28:57.05	$0.35 \pm 0.06$	$4.58 \pm 0.82$
11 <sup>a</sup>	13:05:27.95	-49:29:16.33	$0.36 \pm 0.06$	$4.65 \pm 0.81$
12	13:05:29.73	-49:27:44.90	$0.04 \pm 0.001$	$0.58 \pm 0.02$
13	13:05:38.38	-49:27:24.01	$0.37 \pm 0.06$	$4.76 \pm 0.75$
14	13:05:32.27	-49:26:54.32	$0.16 \pm 0.01$	$2.05 \pm 0.19$
15	13:05:32.08	-49:27:05.11	$0.12 \pm 0.01$	$1.60 \pm 0.10$
16	13:05:28.82	-49:26:40.39	$0.35 \pm 0.06$	$4.56 \pm 0.77$
17 <sup>a</sup>	13:05:42.66	-49:26:29.42	$0.38 \pm 0.04$	$4.92 \pm 0.58$
18 <sup>b</sup>	13:05:32.74	-49:26:20.89	$0.28 \pm 0.04$	$3.69 \pm 0.49$
19	13:05:39.31	-49:26:10.36	$0.23 \pm 0.004$	$3.06 \pm 0.05$
20 <sup>c</sup>	13:05:34.99	-49:25:39.60	$0.39 \pm 0.05$	$5.05 \pm 0.66$
21	13:05:38.42	-49:25:21.81	$0.36 \pm 0.03$	$4.69 \pm 0.43$

**Notes.**

<sup>a</sup> Low S/N spectrum, not included in gradients.

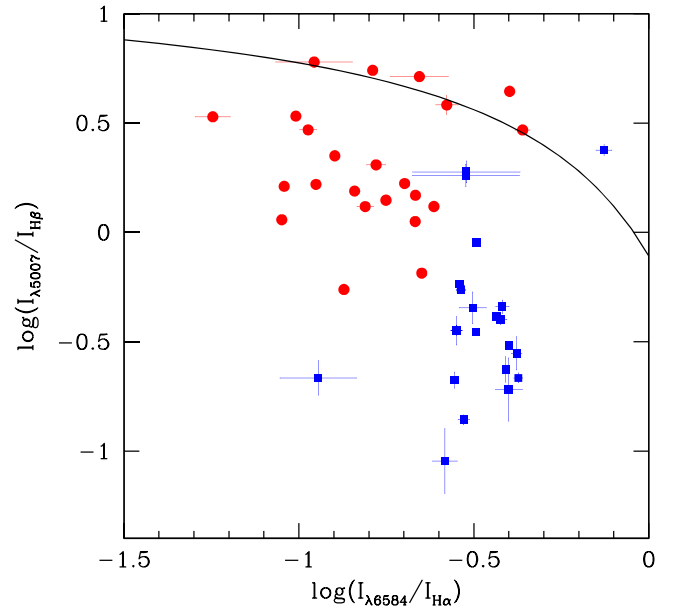
<sup>b</sup> [S II] emission lines have  $2.5 < S/N < 3$ .

<sup>c</sup> Probably not a H II region. BPT outlier. Not included in gradients.

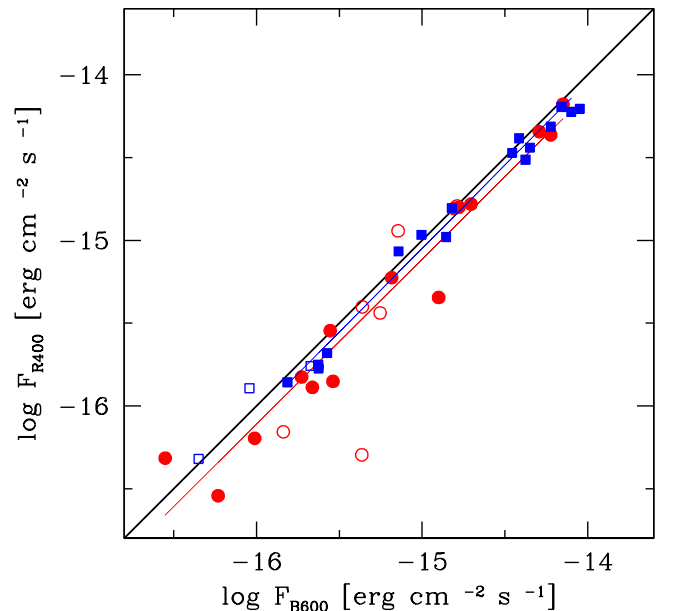
We requested to observe all MOS fields with the most suitable parallactic angle. Instead, most of the spectra were acquired with parallactic angle  $\sim 90^\circ$ , thus the lines near the blue end of the B600 spectra are not usable. In particular, the blue [O II] 3727–3729 Å lines, where present, have low S/N. We deem those lines not suitable for abundance analysis. In this paper we publish only the strong-line fluxes relative to the abundance analysis presented here.

#### 4. STRONG-LINE ABUNDANCES

Gas-phase oxygen abundances are best derived directly from line fluxes and electron densities and temperatures of the gas. Our data set suffers from low S/N auroral lines, making direct analysis unfeasible, allowing instead the determination of oxygen abundances via strong-line diagnostics. The fundamental strong lines in our spectra that can be used for abundance diagnostics are H $\beta$ , [O III]  $\lambda\lambda 4959, 5007$ , H $\alpha$ , [N II]  $\lambda\lambda 6548, 6584$ , and [S II]  $\lambda\lambda 6717, 6731$  Å. The various diagnostic methods use all or a partial suite of these lines;



**Figure 3.** Observed regions in NGC 7793 (red filled circles) and NGC 4945 (blue filled squares), in the  $\log(I_{\lambda 5007}/I_{H\beta})$  vs.  $\log(I_{\lambda 6584}/I_{H\alpha})$  plane. The solid line represents the limiting relation for H II regions (H II regions are located below the curve).



**Figure 4.** Comparison of bright emission lines detected in R400 and B600 for the same targets. NGC 7793 (red filled circles: high S/N spectra of confirmed H II regions; open symbols: other regions) and NGC 4945 (blue filled squares: high S/N spectra of confirmed H II regions; open symbols: other regions). The red and blue lines are the fits (high S/N only) for NGC 7793 and NGC 4945, field 2 (the fit for field 1 overlaps that of NGC 7793). The thick solid line is the 1:1 relation.

maximizing the number of diagnostic lines helps to break degeneracy between abundances and ionization parameters.

We took the opportunity offered by the many emission lines observed and measured to obtain abundances from several strong-line methods. The availability of the [N II] 6584 Å and [S II]  $\lambda\lambda 6717, 6731$  Å lines, together with the strong [O III] and the optical Balmer lines, allow the determination of the ionizing field in the absence of [O II] observations. In the cases where

**Table 5**  
NGC 7793 Fluxes

$\lambda$ (Å)	ID	$F$ (erg cm <sup>-2</sup> s <sup>-1</sup> )	$\Delta F$ (erg cm <sup>-2</sup> s <sup>-1</sup> )	$I$ (erg cm <sup>-2</sup> s <sup>-1</sup> )
Region 2, $c = 0$ , $F_{H\beta} = 2.70e-15 \pm 5e-17$				
H $\beta$	4861	100.0	1.922	100.0

(This table is available in its entirety in machine-readable form.)

**Table 6**  
NGC 4945 Fluxes

$\lambda$ (Å)	ID	$F$ (erg cm <sup>-2</sup> s <sup>-1</sup> )	$\Delta F$ (erg cm <sup>-2</sup> s <sup>-1</sup> )	$I$ (erg cm <sup>-2</sup> s <sup>-1</sup> )
Field 1				
Region 1, $c = 0.65$ , $F_{H\beta} = 4.446e-15 \pm 1e-17$				
H $\beta$	4861	100.0	0.382	100.0

(This table is available in its entirety in machine-readable form.)

[O III], [S II], [N II], H $\alpha$ , and H $\beta$  were all simultaneously available, we determined the oxygen abundances based on the O3S2N2 (also known as *NS*) method by Pilyugin & Mattsson (2011). We followed their prescription at different metallicities (i.e., Equations (8) in Pilyugin & Mattsson 2011) and give the resulting abundances in Column (2) of Tables 7 and 8 (for NGC 7793 and NGC 4945, respectively).

The O3N2 index can be used even when the [S II] lines are either too faint or not available in the spectra. This method is based on the empirical correlation between the O3N2 flux ratio, defined as  $O3N2 = \log([O III] \lambda 5007 / H\beta / [N II] \lambda 6584 / H\alpha)$ , and the oxygen abundance. Pettini & Pagel (2004) and Charlot & Longhetti (2001, case E) have calibrated this index. More recently, Marino et al. (2013) have used a large number of calibrators with known  $T_e$  to determine a new correlation between the O3N2 index and the oxygen abundances of hundreds of extragalactic H II regions, and were able to lower calibration uncertainties with respect to those quoted by previous authors. We used Equation (2) in Marino et al. (2013) to determine the O3N2 abundances presented here. The O3N2 abundances, calculated only if O3N2 is within the domain of the correlation (Marino et al. 2013), are given in Column (3) of Tables 7 and 8.

If only [N II] and H $\alpha$  are available, a rough estimate of the oxygen abundances can be obtained by fitting the direct oxygen abundances versus the N2 ( $\log[N II] \lambda 6584 / H\alpha$ ) index (see e.g., Denicoló et al. 2002; Pettini & Pagel 2004). We calculated the N2 abundances following the new N2 calibration by Marino et al. (2013, Equation (4)). We give the N2 abundances in Column (4) of Tables 7 and 8 for all cases where the index N2 is within the domain of the calibration. It is worth noting that strong-line abundances from both the O3N2 and N2 methods do not suffer from uncertainties associated with cross-grating calibrations, and that the extinction corrections have a small impact on these calibrations since they utilize line ratios that are close in wavelength.

The [O II] emission lines at  $\lambda 3727 \text{ \AA}$  are available for several regions but their fluxes should be considered lower limits, and thus are not useful to determine abundances with the O2 prescription by Kewley & Dopita (2002).

In Figure 5 we compare abundances based on the O3N2 (filled symbols) and N2 (open symbols) indexes versus those obtained with the O3S2N2 calibration for regions in both

**Table 7**  
Strong-line Oxygen Abundances of NGC 7793 Regions

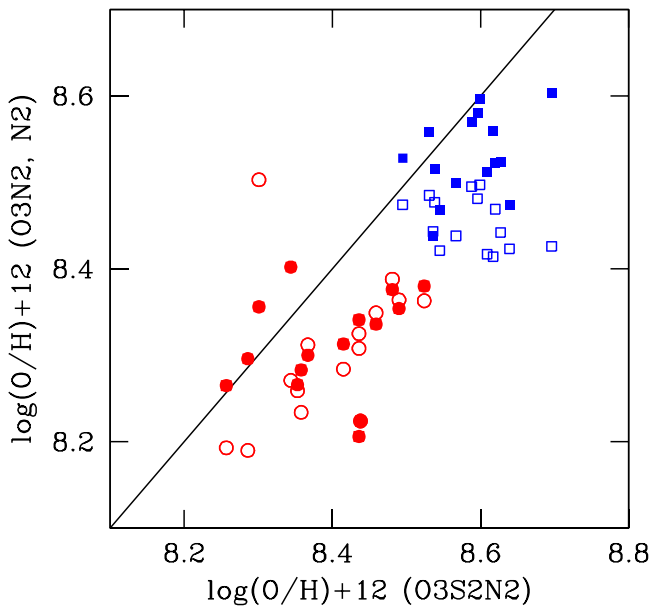
Region	12 + log(O/H) O3S2N2	12 + log(O/H) O3N2	12 + log(O/H) N2
3	8.436 ± 0.077	8.341 ± 0.180	8.325 ± 0.179
4	...	...	8.325 ± 0.275
5	8.300 ± 0.079	8.334 ± 0.179	8.298 ± 0.180
6	8.438 ± 0.080	8.224 ± 0.179	8.224 ± 0.180
7	...	8.407 ± 0.077	...
8	8.358 ± 0.078	8.283 ± 0.180	8.234 ± 0.179
9	8.257 ± 0.077	8.265 ± 0.180	8.193 ± 0.179
10	...	8.261 ± 0.083	8.518 ± 0.236
11	...	...	8.100 ± 0.182
12	8.344 ± 0.077	8.402 ± 0.180	8.271 ± 0.179
13	8.370 ± 0.077	8.203 ± 0.180	8.208 ± 0.179
14	...	8.285 ± 0.176	8.404 ± 0.180
15	8.524 ± 0.077	8.380 ± 0.180	8.363 ± 0.179
16	8.301 ± 0.077	8.356 ± 0.179	8.503 ± 0.180
17	...	...	8.232 ± 0.194
18	8.286 ± 0.077	8.296 ± 0.180	8.190 ± 0.179
19	8.367 ± 0.079	8.300 ± 0.179	8.312 ± 0.180
20	8.415 ± 0.077	8.313 ± 0.180	8.284 ± 0.179
21	8.459 ± 0.077	8.336 ± 0.180	8.349 ± 0.179
22	8.490 ± 0.077	8.354 ± 0.180	8.364 ± 0.179
23	...	8.310 ± 0.180	8.486 ± 0.179
24	8.481 ± 0.077	8.376 ± 0.180	8.388 ± 0.179
25	8.436 ± 0.077	8.206 ± 0.180	8.308 ± 0.179
26	...	8.240 ± 0.169	8.369 ± 0.188
27	8.444 ± 0.077	8.434 ± 0.180	8.372 ± 0.179
28	8.353 ± 0.077	8.266 ± 0.180	8.259 ± 0.179

galaxies (circles for NGC 7793, squares for NGC 4945). Here we exclude all regions that are flagged for low S/N ( $< 2\sigma$ ) or uncertain identification. By calculating the residuals between the O3S2N2 abundances and those obtained with the O3N2 and N2 indexes, we find  $\langle \log(O/H)_{O3S2N2} - \log(O/H)_{O3N2} \rangle = 0.07 \pm 0.072$ , and  $\langle \log(O/H)_{O3S2N2} - \log(O/H)_{N2} \rangle = 0.11 \pm 0.08$ , both based on 30 targets. The linear correlation coefficients (in the logs) are  $R_{xy} = 0.81$  and  $0.71$ , respectively, for the O3N2 and N2 comparisons.

A further quantitative assessment of the different abundance calibrations is given in the discussion. While the O3S2N2 method is preferred, being based on three flux ratios that are

**Table 8**  
Strong-line Oxygen Abundances of NGC 4945 Regions

Region	$12 + \log(\text{O}/\text{H})$ O3S2N2	$12 + \log(\text{O}/\text{H})$ O3N2	$12 + \log(\text{O}/\text{H})$ N2
Field 1			
2	$8.334 \pm 0.077$	$8.670 \pm 0.180$	...
5	$8.545 \pm 0.077$	$8.468 \pm 0.180$	$8.421 \pm 0.120$
6	$8.538 \pm 0.077$	$8.516 \pm 0.178$	$8.477 \pm 0.121$
7	...	...	$8.401 \pm 0.123$
9	$8.531 \pm 0.077$	$8.558 \pm 0.180$	$8.485 \pm 0.120$
10	$8.624 \pm 0.077$	$8.511 \pm 0.179$	$8.417 \pm 0.121$
11	$8.588 \pm 0.077$	$8.570 \pm 0.171$	$8.495 \pm 0.121$
12	$8.617 \pm 0.077$	$8.559 \pm 0.178$	$8.414 \pm 0.121$
Field 2			
1	$8.627 \pm 0.077$	$8.524 \pm 0.180$	$8.442 \pm 0.120$
2	...	...	$8.419 \pm 0.125$
3	...	...	$8.440 \pm 0.121$
4	$8.596 \pm 0.077$	$8.580 \pm 0.175$	$8.481 \pm 0.121$
6	$8.495 \pm 0.077$	$8.528 \pm 0.179$	$8.474 \pm 0.121$
7	$8.439 \pm 0.082$	$8.365 \pm 0.139$	$8.429 \pm 0.161$
9	$8.578 \pm 0.078$	$8.632 \pm 0.144$	$8.402 \pm 0.123$
10	$8.567 \pm 0.078$	$8.499 \pm 0.170$	$8.438 \pm 0.123$
11	$8.626 \pm 0.078$	$8.601 \pm 0.145$	$8.485 \pm 0.123$
12	$8.639 \pm 0.077$	$8.474 \pm 0.180$	$8.423 \pm 0.121$
14	$8.696 \pm 0.077$	$8.603 \pm 0.179$	$8.426 \pm 0.121$
15	$8.620 \pm 0.077$	$8.522 \pm 0.180$	$8.469 \pm 0.120$
17	$8.344 \pm 0.135$	$8.473 \pm 0.153$	$8.237 \pm 0.142$
18	$8.609 \pm 0.077$	$8.512 \pm 0.174$	$8.417 \pm 0.121$
19	$8.536 \pm 0.077$	$8.438 \pm 0.180$	$8.443 \pm 0.120$
20	$8.249 \pm 0.077$	$8.425 \pm 0.178$	...
21	$8.599 \pm 0.077$	$8.596 \pm 0.179$	$8.497 \pm 0.121$



**Figure 5.** Comparison between abundances from the O3N2 and N2 indexes (Marino et al. 2013) vs. those from OP3N2S2. Circles indicate NGC 7793 H II regions, squares NGC 4945 H II regions. Filled symbols: O3N2 vs. O3S2N2; open symbols: N2 vs. O3S2N2. The solid line represents the 1:1 relation.

sensitive to both ionization and abundance, it is also the one that suffers most from the correction across gratings, since all red line fluxes are divided by  $H\beta$  to produce the indexes. The O3N2 method also suffers from the calibration across gratings.

The abundance uncertainties in Tables 7 and 8 are calculated by error propagation, and include both the calibration uncertainties from the indexes, both random and systematic, and the flux uncertainties from our measurements.

## 5. RADIAL OXYGEN GRADIENTS AND CHARACTERISTIC ABUNDANCES

We determine the radial metallicity gradients for both galaxies by fitting the (logarithmic) oxygen abundances versus the galactocentric distances with the *fitexy* routine in Numerical Recipes (Press et al. 1988). We calculate the gradients both in dex  $R_{25}^{-1}$ , and in dex  $\text{kpc}^{-1}$ . We included in these fits both the galactocentric distance and abundance uncertainties; the abundance uncertainties have been derived by error propagation as described in the previous section; uncertainties in the galactocentric distance are estimated by propagating the errors in inclination, position angle, and  $R_{25}$  (or the galaxy distance, if the gradient is given in dex  $\text{kpc}^{-1}$ ).

In Table 9 we give the calculated gradients and average abundances for both galaxies. In Column (1) we give the abundance calibration index; Column (2) gives the number of data points available; Column (3) gives the galactocentric range of the data points, in terms of  $R_{25}$ ; Columns (4) and (5) give the gradient slope, respectively, in dex  $R_{25}^{-1}$  and in dex  $\text{kpc}^{-1}$ , with their uncertainties; Column (6) gives the intercept of the fit, and its uncertainty; and finally, Column (7) gives the average abundance in the radial range of Column (3).

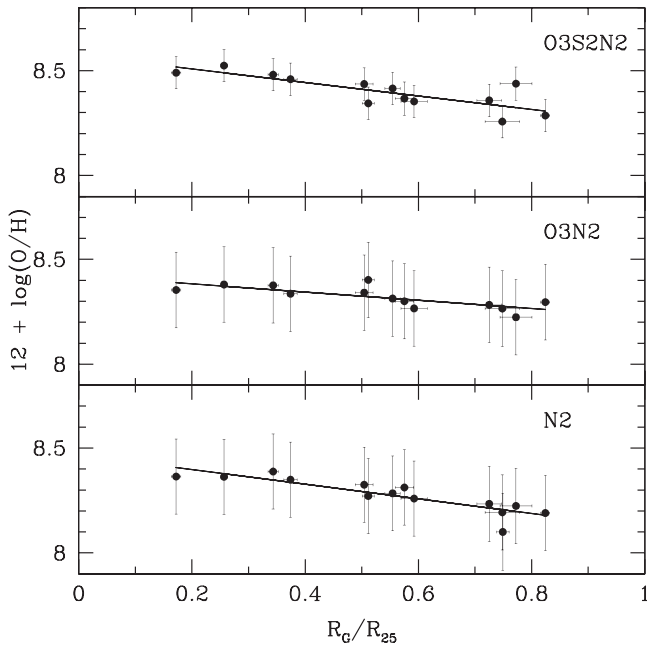
It is evident from Table 9 that the average abundances are higher for the O3S2N2 index than for the other ones, in both galaxies, by a factor of  $\sim 1.1$ – $1.4$ . Note that all averages have been calculated for the same radial range within each galaxy.

In Figure 6 we show the radial metallicity gradients derived for NGC 7793 H II regions with the three indexes. We show the results from the different calibrations in three different panels for clarity (see figure caption) and determine radial oxygen gradients from homogeneous data sets (i.e., from the same calibration). In the gradient analysis we excluded all flagged regions of Table 3, thus we also exclude probable (but not confirmed) H II regions (which are instead included in the abundance comparison of Figure 5).

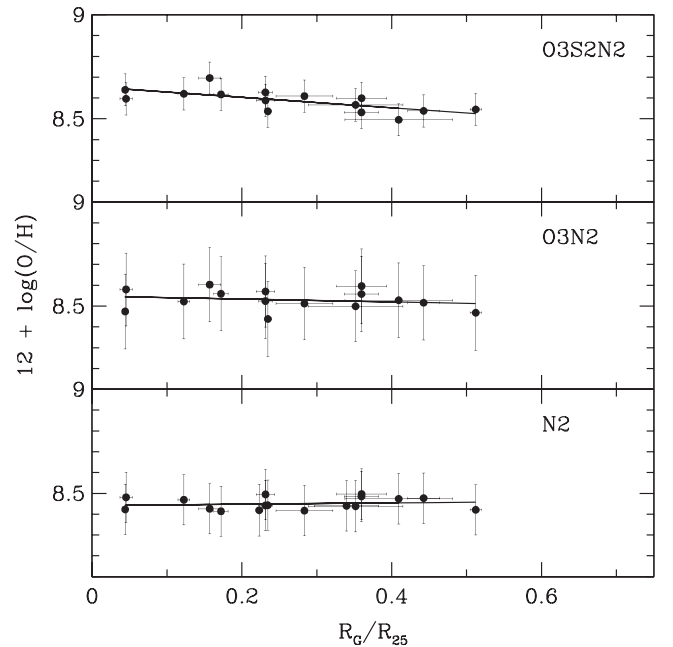
As a comparison, and to show the improvement of our data set over the existing literature, we have considered the line fluxes of H II regions in NGC 7793 from Bibby & Crowther (2010) and Webster & Smith (1983; as corrected by Moustakas et al. 2010) whose oxygen abundances we recalculate following the N2 method (Marino et al. 2013) and found a gradient slope  $\sim -0.270$  dex  $R_{25}^{-1}$ . The gradient described by our own abundances has considerably less scatter (the O3S2N2 calibration gives a linear correlation  $R_{xy} \sim -0.8$ ) than that from the existing literature data ( $R_{xy} = -0.6$ ). NGC 7793 was also analyzed within the data sets included in the comprehensive work by Pilyugin et al. (2014). They found a radial oxygen gradient  $-0.305 \pm 0.048$  dex  $R_{25}^{-1}$ , which is consistent with our result within the errors. Figure 7 is similar to Figure 6, but for NGC 4945 H II regions. All regions not flagged in Table 4 are included in the gradients. We plot radial oxygen gradients from the different abundance calibrations, where the galactocentric distances are from Table 4 and the abundances from Table 8.

**Table 9**  
Radial Oxygen Gradients in NGC 7793 and NGC 4945 from Strong-line Abundances of H II Regions

Method	$N$	Range ( $R_{25}$ )	Slope (dex $R_{25}^{-1}$ )	Slope (dex kpc $^{-1}$ )	Intercept (dex)	$\langle O/H \rangle$ ( $10^{-4}$ )
NGC 7793						
O3S2N2	13	0.17–0.82	$-0.321 \pm 0.112$	$-0.054 \pm 0.019$	$8.572 \pm 0.063$	$2.55 \pm 0.46$
O3N2	13	0.17–0.82	$-0.195 \pm 0.276$	$-0.033 \pm 0.046$	$8.422 \pm 0.145$	$2.09 \pm 0.25$
N2	14	0.17–0.82	$-0.350 \pm 0.263$	$-0.059 \pm 0.044$	$8.468 \pm 0.142$	$1.92 \pm 0.35$
NGC 4945						
O3S2N2	15	0.04–0.51	$-0.253 \pm 0.149$	$-0.019 \pm 0.011$	$8.654 \pm 0.041$	$3.89 \pm 0.47$
O3N2	15	0.04–0.51	$-0.070 \pm 0.275$	$-0.005 \pm 0.021$	$8.548 \pm 0.100$	$3.41 \pm 0.37$
N2	19	0.04–0.51	$0.031 \pm 0.179$	$0.002 \pm 0.014$	$8.442 \pm 0.067$	$2.83 \pm 0.19$



**Figure 6.** Radial oxygen gradients with NGC 7793 H II region abundances. Top panel: oxygen abundances calculated with the O3S2N2 calibration; middle panel: O3N2 calibration; bottom panel: N2 calibration. The solid lines correspond to the fits to the data points, as explained in the text.



**Figure 7.** Same as Figure 6, but for NGC 4945 H II regions.

## 6. DISCUSSION

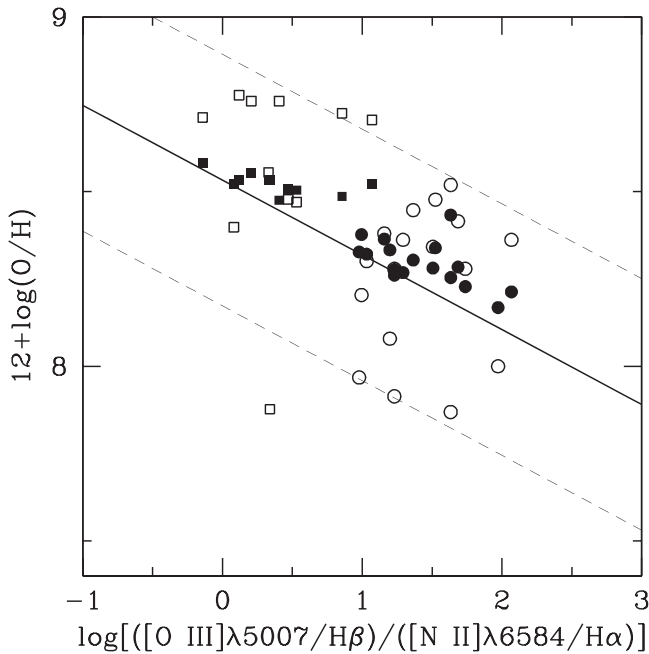
### 6.1. Testing the Reliability of Strong-line Abundance Calibrations: Comparing Strong and Direct Abundances of M81 and M33 H II Regions

We have shown that strong-line oxygen abundances of H II regions in NGC 7793 and NGC 4945 yield to shallow radial metallicity gradients, with negative slopes. An additional check of the different calibration can be obtained by analyzing H II regions in M33 and M81, where direct abundances are available for large samples of H II regions. These two galaxies have recently been analyzed in terms of their direct gas-phase oxygen abundances (Magrini et al. 2010; Stanghellini et al. 2014) and have rather different metallicities, thus are excellent probes of the methods.

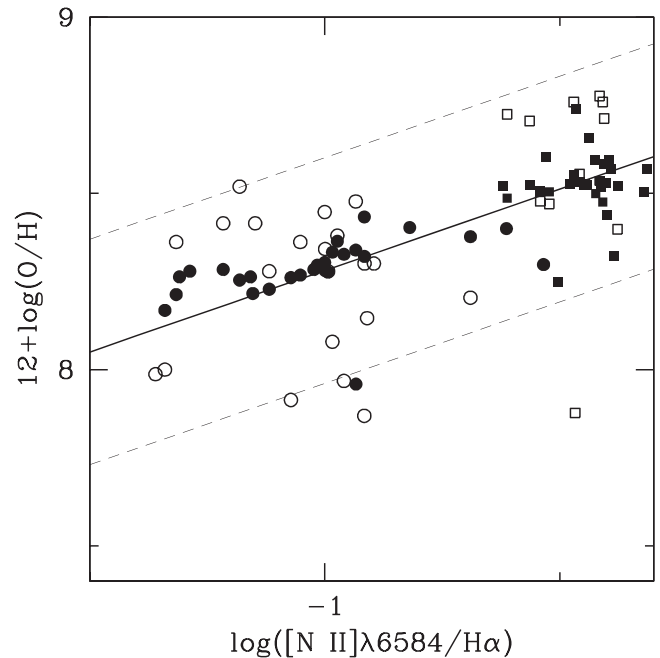
We thus selected line fluxes of M81 and M33 H II regions from Stanghellini et al. (2014) and Magrini et al. (2009a) and calculated strong-line abundances with the O3S2N2, O3N2, and N2 indexes. We then compared strong-line and direct abundances. We choose targets whose fluxes in the  $T_e$  diagnostic lines

had strengths  $>2\sigma$ . By correlating O3S2N2-calibrated and direct abundances, based on 28 common targets, we found that the average of the residuals is  $\langle |\log(O/H)_{\text{direct}} - \log(O/H)_{\text{O3S2N2}}| \rangle = 0.18 \pm 0.16$ . By comparing O3N2 calibration with direct abundances we obtained  $\langle |\log(O/H)_{\text{direct}} - \log(O/H)_{\text{O3N2}}| \rangle = 0.20 \pm 0.14$ , based on 27 targets. For abundances calibrated with N2 we could compare 32 targets, and found  $\langle |\log(O/H)_{\text{direct}} - \log(O/H)_{\text{N2}}| \rangle = 0.20 \pm 0.13$ . The O3S2N2 calibration gives the lowest residuals with respect to the direct abundances and should be preferred when available. This conclusion does not depend on the selected  $2\sigma$  limit for the diagnostic line fluxes. In fact, by choosing line strengths  $>3\sigma$  we would obtain that the O3S2N2 calibration has the smaller residuals, on average.

In Figure 8 we plot the direct (open symbols) and O3S2N2-derived (filled symbols) abundances against the O3N2 index, as derived from observations of M33 (circles) and M81 (squares) H II regions. Direct abundances plotted here are based on temperature diagnostic lines with strengths  $>2\sigma$ . The solid line represents the O3N2 calibration and the broken lines are its range of uncertainty, as given in the original paper ( $\pm 0.36$  dex, where, according to Marino et al., 95% of the data points are to



**Figure 8.** Direct ( $T_e$ , open symbols) and O3S2N2 (filled symbols) abundances against the O3N2 index. Circles: M33 H II regions, squares: M81 H II regions. The solid line is Marino et al.’s calibration; the broken lines are the  $\pm 0.36$  dex limits.



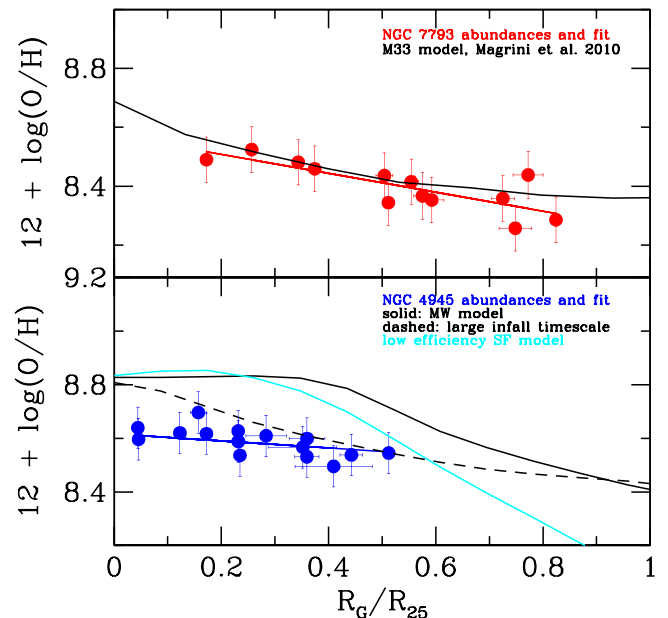
**Figure 9.** Direct ( $T_e$ , open symbols) and O3S2N2 (filled symbols) abundances against the N2 index. Circles: M33 H II regions, squares: M81 H II regions. The solid line is Marino et al.’s calibration; the broken lines are the  $\pm 0.32$  dex limits.

be found). It is worth noting that the M33 and M81 abundances were not included in Marino et al.’s calibrations. A similar plot, but for the N2 calibrator, is shown in Figure 9. From the figures, we noted that the O3N2 method predicts abundances that are lower than both direct and O3S2N2-derived abundances, while the N2-derived abundances are more scattered but seem to trace both the direct and the O3S2N2 abundances.

### 6.2. The Radial Metallicity Gradients of NGC 7793 and NGC 4945 as Compared to Those of Their Twins

As described in the introduction, NGC 7793 and NGC 4945 are two important test galaxies because of their strong similarities with the well-studied M33 and the MW. As seen earlier, Table 1 gives the main properties of each galaxy and of its closer twin. From the characteristics shown in Table 1 we see that M33 and NGC 7793 are both flocculent late-type spiral galaxies, with similar radii and baryonic masses. The MW is slightly brighter and more massive than NGC 4945, but they belong to the same morphological class. Our aim is to compare their strong-line oxygen gradients to see if their intrinsic characteristics—mass and morphology—are enough to guarantee that their present-time gradients, as traced by H II regions, are comparable with those of their twins.

To do that, we contrast the observed metallicity gradients of NGC 7793 and NGC 4945 with the results of two chemical evolution models designed to reproduce the main observational features of M33 and of the MW, respectively. The two models are presented in Magrini et al. (2007, 2010) for M33 and in Magrini et al. (2009b) for the MW. They are part of the family of multiphase models in which the formation and destruction of diffuse gas, clouds, and stars are followed by means of the simple parameterizations of physical processes (e.g., Ferrini et al. 1992). The details and equations of the models, together with the specific parameters adopted for the two galaxies, can



**Figure 10.** Top panel: NGC 7793 gradient from O3S2N2 abundances, with their fit (blue dots and red solid line), and the M33 radial gradient (black line) from the model, as described in the text. Bottom panel: same for NGC 4945, where the solid black line is the basic MW model, the light blue line is the MW model with low-efficiency star formation, and the dashed line is the MW model with larger infall timescale, as described in the text.

be found in the original papers. For both galaxies, their model oxygen gradients are constrained with the abundances of H II regions obtained by direct measurement of their electron temperature, i.e., by direct oxygen abundances.

The comparisons of our data with the models are shown in Figure 10, where we plot the gradients from our O3S2N2 abundance analysis to the models of M33 and the Milky

Way. In the top panel we show the observed oxygen abundances from the O3S2N2 calibration against the M33 model gradient (B1 model,  $t = 0$ , the timescale of the infall =  $0.003 \times 10^{-7} [\text{yr}^{-1}]$ , the coefficient of star formation by cloud collisions =  $0.06 \times 10^{-7} [\text{yr}^{-1}]$ , the coefficient of cloud disruption by cloud collisions =  $0.2 \times 10^{-7} [\text{yr}^{-1}]$ , and the coefficient of cloud formation by condensation of diffuse gas =  $0.01 \times 10^{-7} [\text{yr}^{-1}]$ ; Magrini et al. 2007). The model curve of the oxygen gradient of M33 is built to reproduce the direct oxygen abundances of H II regions. The good agreement between the O3S2N2-gradient of NGC 7793 with the M33 gradient from the basic model points toward a very similar evolution and chemical enrichment history for the two galaxies. As shown in Table 1, the two galaxies are indeed very similar in many aspects, as well as in their relative isolation within the groups of which they are part (the Local Group for M33, and the Sculptor Group from NGC 7793; Radburn-Smith et al. 2011). The average of the residuals between the two radial metallicity gradients plotted in Figure 10 is  $<0.06$  dex.

The situation shown in the bottom panel of Figure 10, representing NGC 4945, is different. On the O3S2N2-derived abundances we overplot the basic MW model by Magrini et al. (2009b, see their Figure A3, present-time model, plotted here with a black solid line. In this case star formation is driven by cloud–cloud collisions, with a timescale of the infall =  $0.012 \times 10^{-7} [\text{yr}^{-1}]$ , the coefficient of star formation by cloud collisions =  $0.2 \times 10^{-7} [\text{yr}^{-1}]$ , the coefficient of cloud disruption by cloud collisions =  $1.0 \times 10^{-7} [\text{yr}^{-1}]$ , and the coefficient of cloud formation by condensation of diffuse gas =  $0.09 \times 10^{-7} [\text{yr}^{-1}]$ ). The observed O3S2N2 oxygen abundances in NGC 4945, while producing a shallow gradient, also give lower metallicity than that observed in the MW. In particular the few regions toward the galactic center do not trace the MW model. We recall that the MW model gradient is constrained with the H II region oxygen abundances derived by Deharveng et al. (2000) with the direct method.

We have thus considered the astrophysical differences between the MW and NGC 4945. Analyzing the main features of the two galaxies, we found that their diversities are related to the nuclear activity and to the environment. The central region of NGC 4945 contains an active galactic nucleus (AGN) revealed most unambiguously by its strong and variable hard X-ray emission (Iwasawa et al. 1993; Done et al. 1996; Madejski et al. 2000). The AGN is classified as Seyfert 2 (Braatz et al. 1997; Madejski et al. 2000; Schurch et al. 2002) and is a strong radio continuum source (e.g., Whiteoak & Wilson 1990). Surrounding the AGN, there is an inclined circumnuclear starburst ring with a radius of  $\sim 2''5$  ( $\sim 46$  pc), seen most clearly in Pa $\alpha$  (Marconi et al. 2000). The central region of NGC 4945 is among the strongest and most prolific extragalactic sources of molecular lines (e.g., Henkel et al. 1994; Curran et al. 2001; Wang et al. 2004; Chou et al. 2007). For these reasons, NGC 4945 is a particularly attractive candidate for studying the nature of molecular gas at the center of an active galaxy, and the role this gas plays in fueling. On the other hand, the MW does not presently appear to be hosting an AGN, given the lack of accretion activity in spite of the presence of a super massive central black hole ( $\sim 10^6 M_{\odot}$ ). It is worth noting that the *Fermi* Gamma-ray Space Telescope revealed two large gamma-ray bubbles in the Galaxy, which extend about  $50^{\circ}$  ( $\sim 10$  kpc) above and below the Galactic center and are symmetric about the Galactic plane

(Guo & Mathews 2012). A recent ( $\sim 1$ – $3$  Myr ago) Galactic AGN jet activity of duration of  $\sim 0.1$ – $0.5$  Myr could have created these bubbles, as follows from the comparison between these *Fermi* data and axisymmetric hydrodynamic simulations. Nonetheless, any presence of an AGN seems to be confined to the Galaxy’s past.

In addition, NGC 4945 belongs to the Centaurus A Group of galaxies, one of the closest groups of galaxies outside the Local Group whose composition is, however, much different from that of the Local Group, being formed by a heterogeneous assembly of early- and late-type galaxies, all of them characterized by a period of enhanced star formation (Côté et al. 2009). Both the AGN nature and the interaction within a galaxy group might have some importance in shaping the radial metallicity gradient of NGC 4945 through the induction of gas flows along the galactic disk. Among the main mechanisms that produce gas flows, there are indeed (i) the large quantity of gas around the AGN combined with the presence of one or more bars that produce a falling of gas into the central regions (AGN fueling, e.g., Athanassoula 1992; Friedli et al. 1994; Casasola et al. 2008, 2011; Perez et al. 2011; Combes et al. 2013) and/or (ii) the interaction of galaxies that induces gas flows from the outer parts to the center of each component (Toomre & Toomre 1972; Casasola et al. 2004; Dalcanton 2007).

From the observational point of view, radial inflows, which fuel AGNs together with the central starburst, might lead to a flattening of the metallicity gradient by gas mixing (e.g., Onodera et al. 2004). In this framework, the comparison of NGC 4945 with our Galaxy is, thus, of great importance because we have the possibility to compare a MW twin—in terms of mass and morphology—but having a central AGN and inhabiting a different environment. Although NGC 4945 resides in a galaxy group, it does not have any close massive companion. Thus, we suspect that the origin of the differences between the gradients of the two galaxies is mainly related to the presence of an AGN and a bar that induce continuous infall of material toward the central regions. The presence of a central bar in NGC 4945 has been known for some time (see e.g., Peterson 1980; Lin et al. 2011). From spectroscopic investigation of the ionized gas, Peterson (1980) found strong indication of infalling gas on the southwest side of the galaxy, inferred from departure from purely circular motions.

Starting from the chemical evolution model of the MW as described in Magrini et al. (2009b), we sketch the effect of an AGN combined with a central bar, as observed in NGC 4945, in two different ways: (i) assuming AGN feedback that reduces the star formation efficiency in the inner part of the NGC 4945 disk (e.g., Weinmann et al. 2006) and (ii) considering a higher and more continuous infall of metal-poor material, necessary to fuel the AGN activity. We thus modified some of the MW model parameters accordingly. In particular, we considered a model with half the star formation efficiency of the MW, and one with an infall rate more diluted in time, corresponding to a longer infall time and a higher infall rate at present time. The results of these two models in terms of the radial oxygen gradients are shown in Figure 10, bottom panel, where we plot the low star-forming efficiency model with a light blue solid line and the larger infall model with a dashed line. The lower star formation efficiency has the effect of producing a smaller disk, where the metallicity is rapidly declining for regions at galactocentric distances of  $R_G/R_{25} > 0.3$ , which is not observed in NGC 4945. On the other hand, the longer timescale

for the infall produces a shallow metallicity gradient and a metallicity offset consistent with our NGC 4945 observations. The model gradient is still more peaked in the central  $0.1 R_G/R_{25}$  than the observed one.

However, the dynamical effect of the bar, not considered in the chemical evolution model shown here, may have a mixing effect that further flattens the inner gradient, and reduces the overall metallicity because of the dilution by primordial gas inflowing from the outer disk (see, e.g., Portinari & Chiosi 2000) and/or by AGN-driven super-winds driving gas out of the central regions (Narayanan et al. 2008). Since our model is a simple semi-analytical chemical evolution model that does not include dynamical effects, we can only speculate that the differences between NGC 4945 and the MW gradients are induced by a presence of gas flows due to both AGN-driven winds and to the bar.

## 7. CONCLUSIONS

The strong-line abundance calibrations available to date can give a handle to calculate radial oxygen gradients in spiral galaxies. While more uncertain than the direct methods, if chosen appropriately, they can give constraints to evolutionary models. Strong-line and direct abundances cannot be compared directly in the studied galaxies, since our observations were not deep enough to obtain electron temperatures of the H II targets. Strong-line fluxes allow us to determine abundances by using three different calibrations: the O3S2N2 calibration, and the O3N2 and N2 calibrations.

To probe the quality of strong-line abundances, we used the available flux data of M33 and M81 H II regions, and their direct abundances. Comparison between direct and strong-line abundances for these samples indicates that the better calibration is the O3S2N2 index, the one with the larger number of constraints. The O3S2N2 index gives an average abundance of  $(2.55 \pm 0.46) \times 10^{-4}$  for 13 NGC 7793 regions in the  $0.17 < R_G/R_{25} < 0.82$  radial range, and  $(3.89 \pm 0.37) \times 10^{-4}$  for 17 NGC 4945 regions in the  $0.044 < R_G/R_{25} < 0.51$  radial range.

We obtained a good fit to the abundances and galactocentric distances of NGC 7793, yielding to a radial metallicity gradient with slope of  $-0.321 \pm 0.112$  dex  $R_{25}^{-1}$ . This gradient compares well with that of its galactic twin, M33, which is similar in mass and morphology. The two gradients differ in ordinate less 0.05 dex in the whole radial range for which the NGC 7793 gradient is defined, and with average residuals between the two gradients of  $0.029 \pm 0.016$  dex, pointing toward a similar chemical evolution for those two galaxies.

The gradients of NGC 4945 and of the Galaxy show, instead, a substantial difference in the absolute scale of their metallicity, with an offset of about  $\sim 0.15$  dex at the galactic center, which cannot be accounted for entirely by calibration uncertainties. We have analyzed the differences between NGC 4945 and the MW, and considered the effects of the presence of an AGN combined with a central bar in NGC 4945, which might have primary importance in shaping the radial gradient. Using the multiphase chemical evolution models developed by Magrini et al. (2009b) for the MW, we have varied the infall rate according to the AGN and bar observations, finding that we are able to reproduce a milder gradient with a lower metallicity for NGC 4945, assuming a more continuous inflow of material than for the MW. We conclude that, while mass and morphology are among the main drivers of the shape of the

radial metallicity gradient, other aspects, such as the presence of a bar, or central activity, or of a close interacting companion, can lead to substantial changes in the shape and/or absolute scale of the metallicity gradients.

The study of twin pairs of galaxies is at its early stages, and we plan to continue to use this powerful tool to assess chemical evolution of nearby spiral galaxies via gas-phase metallicity analysis. The oxygen abundance analysis of NGC 4945 would be more effective if the S/N of the spectra would allow direct abundances. We plan more observations along these lines in the future.

We thank Marcel Bergmann for his help in implementing Phase 2 of this program, and Katia Cunha and Arjun Dey for scientific discussions. We also thank an anonymous referee for very useful suggestions on an earlier version of this paper. Based on observations obtained at the Gemini Observatory, which is operated by the Association of Universities for Research in Astronomy, Inc., under a cooperative agreement with the NSF on behalf of the Gemini partnership: the National Science Foundation (United States), the National Research Council (Canada), CONICYT (Chile), the Australian Research Council (Australia), Ministério da Ciência, Tecnologia e Inovação (Brazil) and Ministerio de Ciencia, Tecnología e Innovación Productiva (Argentina). This research has made use of the NASA/IPAC Extragalactic Database (NED) which is operated by the Jet Propulsion Laboratory, California Institute of Technology, under contract with the National Aeronautics and Space Administration. We acknowledge the usage of the HyperLeda database (<http://leda.univ-lyon1.fr>).

Facility: Gemini

## REFERENCES

- Ables, J. G., Forster, J. R., Manchester, R. N., et al. 1987, *MNRAS*, **226**, 157  
 Athanassoula, E. 1992, *MNRAS*, **259**, 328  
 Baldwin, J. A., Phillips, M. M., & Terlevich, R. 1981, *PASP*, **93**, 5  
 Berg, D. A., Skillman, E. D., Garnett, D. R., et al. 2013, *ApJ*, **775**, 128  
 Bibby, J. L., & Crowther, P. A. 2010, *MNRAS*, **405**, 2737  
 Braatz, J. A., Wilson, A. S., & Henkel, C. 1997, *ApJS*, **110**, 321  
 Bresolin, F. 2011, *ApJ*, **730**, 129  
 Bresolin, F., Gieren, W., Kudritzki, R.-P., et al. 2009, *ApJ*, **700**, 309  
 Casasola, V., Bettoni, D., & Galletta, G. 2004, *A&A*, **422**, 941  
 Casasola, V., Combes, F., García-Burillo, S., et al. 2008, *A&A*, **490**, 61  
 Casasola, V., Hunt, L. K., Combes, F., García-Burillo, S., & Neri, R. 2011, *A&A*, **527**, AA92  
 Charlot, S., & Longhetti, M. 2001, *MNRAS*, **323**, 887  
 Chou, R. C. Y., Peck, A. B., Lim, J., et al. 2007, *ApJ*, **670**, 116  
 Combes, F., García-Burillo, S., Casasola, V., et al. 2013, *A&A*, **558**, A124  
 Corbelli, E., & Schneider, S. E. 1997, *ApJ*, **479**, 244  
 Corbelli, E., Thilker, D., Zibetti, S., Giovanardi, C., & Salucci, P. 2014, *A&A*, **572**, A23  
 Côté, S., Draginda, A., Skillman, E. D., & Miller, B. W. 2009, *AJ*, **138**, 1037  
 Curran, S. J., Johansson, L. E. B., Bergman, P., Heikkilä, A., & Aalto, S. 2001, *A&A*, **367**, 457  
 Dahlem, M., Golla, G., Whiteoak, J. B., et al. 1993, *A&A*, **270**, 29  
 Dalcanton, J. J. 2007, *ApJ*, **658**, 941  
 Deharveng, L., Peña, M., Caplan, J., & Costero, R. 2000, *MNRAS*, **311**, 329  
 Denicoló, G., Terlevich, R., & Terlevich, E. 2002, *MNRAS*, **330**, 69  
 Done, C., Madejski, G. M., & Smith, D. A. 1996, *ApJL*, **463**, L63  
 Ferrini, F., Matteucci, F., Pardi, C., & Penco, U. 1992, *ApJ*, **387**, 138  
 Friedli, D., Benz, W., & Kennicutt, R. 1994, *ApJL*, **430**, L105  
 Freedman, W. L., Wilson, C. D., & Madore, B. F. 1991, *ApJ*, **372**, 455  
 Gibson, B. K., Pilkington, K., Brook, C. B., Stinson, G. S., & Bailin, J. 2013, *A&A*, **554**, A47  
 Guo, F., & Mathews, W. G. 2012, *ApJ*, **756**, 181  
 Henkel, C., Whiteoak, J. B., & Mauersberger, R. 1994, *A&A*, **284**, 17  
 Iwasawa, K., Koyama, K., Awaki, H., et al. 1993, *ApJ*, **409**, 155

- Kafle, P. R., Sharma, S., Lewis, G. F., & Bland-Hawthorn, J. 2012, *ApJ*, **761**, 98
- Karachentsev, I. D., Grebel, E. K., Sharina, M. E., et al. 2003, *A&A*, **404**, 93
- Kewley, L. J., & Dopita, M. A. 2002, *ApJS*, **142**, 35
- Kniazev, A. Y., Pustilnik, S. A., & Zucker, D. B. 2008, *MNRAS*, **384**, 1045
- Leroy, A. K., Walter, F., Brinks, E., et al. 2008, *AJ*, **136**, 2782
- Lin, L.-H., Taam, R. E., Yen, D. C. C., Muller, S., & Lim, J. 2011, *ApJ*, **731**, 15
- Madejski, G., Życki, P., Done, C., et al. 2000, *ApJL*, **535**, L87
- Magrini, L., Corbelli, E., & Galli, D. 2007, *A&A*, **470**, 843
- Magrini, L., Sestito, P., Randich, S., & Galli, D. 2009b, *A&A*, **494**, 95
- Magrini, L., Stanghellini, L., Corbelli, E., Galli, D., & Villaver, E. 2010, *A&A*, **512**, A63
- Magrini, L., Stanghellini, L., & Villaver, E. 2009a, *ApJ*, **696**, 729
- Marconi, A., Oliva, E., van der Werf, P. P., et al. 2000, *A&A*, **357**, 24
- Marino, R. A., Rosales-Ortega, F. F., Sánchez, S. F., et al. 2013, *A&A*, **559**, A114
- Moustakas, J., Kennicutt, R. C., Jr., Tremonti, C. A., et al. 2010, *ApJS*, **190**, 233
- Narayanan, D., Cox, T. J., Kelly, B., et al. 2008, *ApJS*, **176**, 331
- Onodera, S., Koda, J., Sofue, Y., & Kohno, K. 2004, *PASJ*, **56**, 439
- Osterbrock, D. E., & Ferland, G. J. 2006, in *Astrophysics of Gaseous Nebulae and Active Galactic Nuclei*, ed. D. E. Osterbrock & G. J. Ferland (2nd ed.; Sausalito, CA: Univ. Science Books)
- Peña, M. 2011, *RMxAA*, **39**, 91
- Perez, J., Michel-Dansac, L., & Tissera, P. B. 2011, *MNRAS*, **417**, 580
- Peterson, C. J. 1980, *PASP*, **92**, 397
- Pettini, M., & Pagel, B. E. J. 2004, *MNRAS*, **348**, L59
- Pilkington, K., Few, C. G., Gibson, B. K., et al. 2012, *A&A*, **540**, A56
- Pilyugin, L. S., Grebel, E. K., & Kniazev, A. Y. 2014, *AJ*, **147**, 131
- Pilyugin, L. S., & Mattsson, L. 2011, *MNRAS*, **412**, 1145
- Portinari, L., & Chiosi, C. 2000, *A&A*, **355**, 929
- Press, W. 1988, *Numerical Recipes* (Cambridge: Cambridge Univ. Press)
- Radburn-Smith, D. J., de Jong, R. S., Seth, A. C., et al. 2011, *ApJS*, **195**, 18
- Rahimi, A., Kawata, D., Allende Prieto, C., et al. 2011, *MNRAS*, **415**, 1469
- Sánchez, S. F., Rosales-Ortega, F. F., Iglesias-Páramo, J., et al. 2014, *A&A*, **563**, AA49
- Schurch, N. J., Roberts, T. P., & Warwick, R. S. 2002, *MNRAS*, **335**, 241
- Stanghellini, L., Magrini, L., Casasola, V., & Villaver, E. 2014, *A&A*, **567**, AA88
- Toomre, A., & Toomre, J. 1972, *ApJ*, **178**, 623
- Van Dyk, S. D., Davidge, T. J., Elias-Rosa, N., et al. 2012, *AJ*, **143**, 19
- Vaucouleurs, G., & Pence, W. D. 1978, *AJ*, **83**, 1163
- Vila-Costas, M. B., & Edmunds, M. G. 1992, *MNRAS*, **259**, 121
- Wang, M., Henkel, C., Chin, Y.-N., et al. 2004, *A&A*, **422**, 883
- Webster, B. L., & Smith, M. G. 1983, *MNRAS*, **204**, 743
- Weinmann, S. M., van den Bosch, F. C., Yang, X., et al. 2006, *MNRAS*, **372**, 1161
- Whiteoak, J. B., & Wilson, W. E. 1990, *MNRAS*, **245**, 665