



Publication Year	2018
Acceptance in OA	2021-01-21T18:40:20Z
Title	Studying the late evolution of a radio-loud AGN in a galaxy group with LOFAR
Authors	Savini, F., BONAFEDE, ANNALISA, Brügger, M., Wilber, A., Harwood, J. J., MURGIA, MATTEO, Shimwell, T., Rafferty, D., Shulevski, A., BRIENZA, MARISA, Hardcastle, M. J., Morganti, R., Röttgering, H., Clarke, A. O., De Gasperin, F., van Weeren, R., Best, P. N., Botteon, A., BRUNETTI, GIANFRANCO, CASSANO, Rossella
Publisher's version (DOI)	10.1093/mnras/stx2876
Handle	http://hdl.handle.net/20.500.12386/29929
Journal	MONTHLY NOTICES OF THE ROYAL ASTRONOMICAL SOCIETY
Volume	474

Studying the late evolution of a radio-loud AGN in a galaxy group with LOFAR

F. Savini,^{1★} A. Bonafede,^{1,2★} M. Brüggén,^{1★} A. Wilber,¹ J. J. Harwood,³ M. Murgia,⁴ T. Shimwell,^{3,5} D. Rafferty,¹ A. Shulevski,³ M. Brienza,^{3,6} M. J. Hardcastle,⁷ R. Morganti,^{3,6} H. Röttgering,⁵ A. O. Clarke,⁸ F. de Gasperin,⁵ R. van Weeren,⁹ P. N. Best,⁵ A. Botteon,^{2,10} G. Brunetti² and R. Cassano²

¹Hamburger Sternwarte, Universität Hamburg, Gojenbergsweg 112, D-21029, Hamburg, Germany

²INAF IRA, via Gobetti 101, I-40129 Bologna, Italy

³ASTRON, the Netherlands Institute for Radio Astronomy, Postbus 2, NL-7990 AA, Dwingeloo, the Netherlands

⁴INAF/Osservatorio Astronomico di Cagliari, Loc. Poggio dei Pini, Strada 54, I-09012 Capoterra (CA), Italy

⁵Leiden University, Rapenburg 70, NL-2311 EZ Leiden, the Netherlands

⁶Kapteyn Astronomical Institute, University of Groningen, PO Box 800, NL-9700 AV, Groningen, the Netherlands

⁷Centre for Astrophysics Research, School of Physics, Astronomy and Mathematics, University of Hertfordshire, College Lane, Hatfield AL10 9AB, UK

⁸University of Manchester, Jodrell Bank Centre for Astrophysics, Manchester, M139PL, UK

⁹Harvard-Smithsonian Center for Astrophysics, 60 Garden Street, Cambridge, MA 02138, USA

¹⁰Dipartimento di Fisica e Astronomia, Università di Bologna, via P. Gobetti 93/2, I-40129 Bologna, Italy

Accepted 2017 November 2. Received 2017 November 2; in original form 2017 August 8

ABSTRACT

Feedback by radio-loud active galactic nuclei (AGNs) in galaxy groups is not fully understood. Open questions include the duty cycle of the AGN, the spatial extent of the radio lobes, the effect they have on the intragroup medium and the fate of the cosmic rays. We present the discovery of a 650 kpc-radio galaxy embedded in steep diffuse emission at $z = (0.18793 \pm 5) \times 10^{-5}$ located at the centre of the galaxy group MaxBCG J199.31832+51.72503 using an observation from the LOFAR Two-metre Sky Survey (LoTSS) at the central frequency of 144 MHz. Subsequently, we performed a Giant Meterwave Radio Telescope observation at the central frequency of 607 MHz to study the spectral properties of the source. The observations reveal a radio galaxy with a total radio power $P_{\text{tot}, 1.4} \sim 2.1 \times 10^{24} \text{ W Hz}^{-1}$, exhibiting two asymmetrical jets and lobes. The derived spectral index map shows a steepening towards the inner regions and a steep-spectrum core region. We model the integrated radio spectrum, providing two possible interpretations: the radio source is evolved but still active or it is just at the end of its active phase. Finally, in the same field of view we have discovered Mpc-sized emission surrounding a close pair of AGN located at a redshift $z = (0.0587 \pm 2) \times 10^{-4}$ (SDSS J131544.56+521213.2 and SDSS J131543.99+521055.7) which could be a radio remnant source.

Key words: galaxies: groups: general – galaxies: jets – galaxies: magnetic fields – radio continuum: galaxies.

1 INTRODUCTION

The majority of galaxies in the local Universe are grouped in dynamically bound systems, such as galaxy groups and clusters. Groups differ from clusters in terms of scaling relations, luminosity functions and halo masses, which are in the range 10^{12} – $10^{14} M_{\odot}$ for groups and $\sim 10^{15} M_{\odot}$ for clusters (e.g. Kravtsov & Borgani 2012). Low-power radio galaxies are commonly found in the centres of

rich galaxy groups and clusters, and contribute to the heating of the intra-cluster/-group medium (ICM/IGM) through the ongoing activity in their nuclei (Croston, Hardcastle & Birkinshaw 2005; Croston & Hardcastle 2014). Radio-loud active galactic nuclei (AGNs) play a crucial role in the thermal evolution of galaxy clusters, providing energy that can offset the radiative losses suffered by the medium and hence averting catastrophic cooling (Fabian, Nulsen & Canizares 1991; O’Sullivan et al. 2011).

The details of this feedback mechanism are still not fully understood, particularly in small galaxy groups, since X-ray measurements are inherently limited to high-temperature groups. Among the many uncertainties about the features of radio galaxies in

*E-mail: federica.savini@hs.uni-hamburg.de (FS); annalisa.bonafede@hs.uni-hamburg.de (AB); mbrueggen@hs.uni-hamburg.de (MB)

Table 1. MaxBCG J199 in the SDSS (Koester et al. 2007). Col. 1–4: target position, right ascension and declination, longitude and latitude; Col. 5: photometric redshift; Col. 6: luminosity in i band; Col. 7: number of red-sequence galaxies in the cluster; Col. 8: radius within which the density of galaxies is 200 times the mean density of such galaxies; Col. 9: N_{gal} within R_{200} from the cluster centre. Note that R_{200} and $N_{\text{gal}, 200}$ are related through a power law (Hansen et al. 2005; Rykoff et al. 2012).

1: RA (h:m:s, J2000)	2: DEC (°:′:″, J2000)	3: l (°)	4: b (°)	5: z	6: L_i ($\times 10^{10} L_{\odot}$)	7: N_{gal}	8: R_{200} (kpc)	9: $N_{\text{gal}, 200}$
13:17:16.4	+51:43:30.0	199.318	51.725	0.18 ± 0.01	17.658	13	530	10

groups, it is not clear how the AGN affects the thermal state of the intragroup gas and hence the accretion in the nucleus, and how the cosmic rays in the lobes of the radio-loud AGN diffuse, mix and cool in the IGM (e.g. Giacintucci et al. 2011). The AGN emission can reach hundreds of kpc and in the case of galaxy groups, the low-density environment allows the lobes to expand to scales of up to Mpc (e.g. Kaiser & Alexander 1999; Clarke et al. 2017), which has implications for the hydrodynamics of a possible feedback process. Furthermore, the electrons injected into the intragroup medium provide a seed population that could be re-accelerated by shocks and turbulence during group mergers, as occurs in cluster mergers (e.g. van Weeren et al. 2017).

In addition, little is known about what sets the duty cycle of the AGN, i.e. the activity/quiescence phases that radio-loud galaxies undergo. Once the jets of a radio galaxy stop supplying fresh cosmic ray electrons (CRe) to the lobes, the radio sources start to fade on a time-scale of $\sim 10^7$ Myr due to losses through synchrotron radiation, inverse Compton and plasma adiabatic expansion (e.g. Kardashev 1962; Murgia et al. 1999). Due to particle energy losses, the high-frequency spectrum steepens with spectral indices¹ of $\alpha < -1$, and a spectral break develops depending on the magnitude of the energy loss and the age of the particle population.

Low-frequency observations are ideal for discovering steep-spectrum diffuse radio emission since they trace the low-energy, old CRe less affected by the energy losses.

The Low-Frequency ARray (LOFAR; van Haarlem et al. 2013) probes the right frequency range and offers the good sensitivity to diffuse, low-surface brightness emission regions due to its uv plane sampling properties. With its high imaging angular resolution, LOFAR can identify the presence of evolved radio galaxies, explore their morphology and model their spectrum. With LOFAR, so far, only few remnants have been detected and studied in detail (Brienza et al. 2016c; Hardcastle et al. 2016; Shulevski et al. 2017). However, the first systematic searches of these sources in the LOFAR fields have already provided an indication of their fraction (between 10 and 30 per cent) relative to the entire radio source population (Brienza, Godfrey & Morganti 2016a; Hardcastle et al. 2016). In this paper, we study the peculiar radio source discovered at the centre of the galaxy group MaxBCG J199.31832+51.72503 (hereinafter MaxBCG J199) using multifrequency radio observations to constrain the properties and the origin of the emission discovered by LOFAR. The target was selected from a pointing within the LOFAR Two-metre Sky Survey (LoTSS; Shimwell et al. 2017) after a preliminary inspection of the data set with the aim of finding radio diffuse emission associated with galaxy groups/clusters. LoTSS is a deep imaging survey carried out as part of the LOFAR Surveys Key Science Project (Röttgering et al. 2006) to obtain deep ($\sim 100 \mu\text{Jy beam}^{-1}$) high-resolution (~ 5 arcsec) images at 120–

168 MHz using the Dutch part of the array in order to map the entire Northern sky.

The structure of the paper is the following: we present the source in Section 1.1, we outline the radio observations and data reduction in Section 2, our main results are presented in Section 3 and we discuss our findings and conclusions in Sections 4–6. Throughout the paper, we assume a flat, Λ CDM cosmology with matter density $\Omega_M = 0.3$ and Hubble constant $H_0 = 67.8 \text{ km s}^{-1} \text{ Mpc}^{-1}$ (Planck Collaboration XIII 2016). The angular to physical scale conversion at $z = 0.188$ is $3.167 \text{ kpc arcsec}^{-1}$.

1.1 The galaxy group MaxBCG J199

The source MaxBCG J199 was classified as a galaxy cluster by Koester et al. (2007) after being identified in the Sloan Digital Sky Survey (SDSS I/II; York et al. 2000). The SDSS photometric data were searched for clusters in the redshift range $0.1 \leq z \leq 0.3$ containing 10 or more red-sequence² galaxies (Bower, Lucey & Ellis 1992). The number of galaxies, N_{gal} , gives a first estimate of the cluster richness, which is then used to estimate the cluster size $R_{200} \propto N_{\text{gal}}^{0.6} \text{ Mpc}$, where R_{200} is the radius within which the mean density of red-sequence galaxies is 200 Ω_M times the mean galaxy density (Hansen et al. 2005). Considering the scaled richness estimate $N_{\text{gal}, 200}$, i.e. the number of galaxies within R_{200} from the cluster centre, we can use the scaling relation between M_{500} and $N_{\text{gal}, 200}$ in Rozo et al. (2009) to get an estimate of the cluster mass (contained within an overdensity of 500 relative to critical at the group redshift): $M_{500} = e^B (N_{\text{gal}, 200}/40)^A \times 10^{14} M_{\odot}$, where $A = 1.06 \pm 0.17$ and $B = 0.95 \pm 0.16$. Based on the SDSS selection, the number of galaxies in MaxBCG J199 within R_{200} is 10 and $M_{500} = (0.6 \pm 0.2) \times 10^{14} M_{\odot}$. The richness and the estimated mass for MaxBCG J199 are much lower than the typical values for galaxy clusters, hence we will refer to it as a galaxy group. Details of the group are summarized in Table 1.

2 RADIO OBSERVATIONS AND DATA REDUCTION

Summaries of the observations can be found in Table 2. The calibration and imaging procedure performed on the Low-Frequency Array (LOFAR) and Giant Meterwave Radio Telescope (GMRT) observations are outlined below. We consider a calibration error of 15 per cent on all the measured flux densities (Shimwell et al. 2016; van Weeren et al. 2016b).

2.1 LOFAR

LOFAR is an array of antenna dipoles grouped into so-called stations (see van Haarlem et al. 2013 for details). The Low Band

¹ The spectrum is defined by $S(\nu) \propto \nu^{\alpha}$.

² Galaxies with $-24 < M_r < -16$, where M_r is the magnitude in the r band.

Table 2. Details of the radio observations.

	LOFAR	GMRT
Telescope	LOFAR	GMRT
Observation ID	LC2_038	31_071
Pointing centre (RA,DEC)	13:12:03.2, +52:07:19.4	13:17:16.4, +51:43:30.0
Observation date	2014 Aug 24	2016 Dec 25
Total on-source time	8 h	8 h
Flux calibrator	3C295	3C147 and 3C286
Central frequency	144 MHz	607 MHz
Bandwidth	48 MHz	32 MHz
Channels	64	256
Integration time	1 s	8 s
Field of view	5°	1°
Baselines	Dutch (80–40 000) λ	(150–49 000) λ

Antennas (LBA) operate in the range 10–90 MHz and the High Band Antennas (HBA) in the range 110–240 MHz.

In this paper, we present an HBA LOFAR observation at the central frequency of 144 MHz within LoTSS. A preliminary pre-processing step has been performed through a pipeline offered by the Radio Observatory (ASTRON) to flag bad data and average in time and frequency (down to 0.1 MHz ch^{-1} and 8 s). Data reduction was performed following the calibration scheme described in van Weeren et al. (2016a), which has been developed to correct for direction-dependent effects within the observed field of view at HBA frequencies. The calibration scheme consists of two main components: a non-directional part and a directional part, briefly summarized below. For more details, we refer the reader to van Weeren et al. (2016a).

2.1.1 Pre-Facet Calibration

The direction-independent part, so-called Pre-Facet Calibration (Prefactor pipeline³), is a preparatory step for the directional calibration processing. Amplitudes and phase gains, station phase correlation offsets and clock-TEC⁴ solutions are calculated for the flux calibrator, adopting the flux scale of Scaife & Heald (2012). The flux calibrator for our data set is 3C295 and was observed for 10 min.

After these steps, we transferred the amplitude gains, station phase correlation offsets and clock offset to the target data. An initial phase calibration was performed using a low-resolution sky model (Global Sky Model for LOFAR⁵) from the VLA Low-Frequency Sky Survey Redux (VLSSr; Lane et al. 2012), the Westerbork Northern Sky Survey (WENSS; Rengelink et al. 1997), and the NRAO VLA Sky Survey (NVSS; Condon et al. 1998).

High-resolution (39 arcsec \times 31 arcsec) and low-resolution (126 arcsec \times 108 arcsec) direction-independent calibrated images were obtained through a step called Initial Subtraction.

In this step, high-resolution compact sources are masked and imaged. Their clean components are then subtracted from the uv data and listed into a sky model (one for each subband). Diffuse emission that was not visible in the high-resolution images can now be detected and low-resolution sources are then masked and imaged. The low-resolution components are also subtracted from the uv data and then added to the sky model. The calibrator 3C295, which appears as a bright source far outside the FWHM of the primary beam ($\sim 8^\circ$ far away from the science target) causing some artefacts in the field of view, was peeled off from the first half of the bandwidth where the effects are more relevant.

³ <https://github.com/lofar-astron/prefactor>

⁴ TEC refers to the station differential Total Electron Content.

⁵ <https://www.astron.nl/radio-observatory/lofar/lofar-imaging-cookbook>

2.1.2 Facet Calibration

The direction-dependent step, so-called Facet-Calibration (Factor pipeline⁶), is based on dividing the sky into a discrete number of directions (facets) covering the observed field of view and calibrating each of these directions separately. The aim is to calculate the direction-dependent corrections needed to obtain near-thermal-noise-limited images using the full resolution offered by LOFAR. The input needed for the pipeline are the sky models obtained through Initial Subtraction and empty data sets that will be filled with the calibrated sources. A default calibrator, typically a bright compact source, is selected for each facet with restrictions, such as minimum flux density in the highest frequency band and maximum size. The user may modify the calibration region, and multiple sources within the region can be used. We use settings in the Factor pipeline to restrict the facet calibrator sources to have a reasonable total number of facets with reasonable sizes. The aim is to compute solutions on small portions of the sky and reduce the processing time. We choose a minimum flux density of 0.6 Jy for the calibrators, and we also choose to calibrate and image using baselines above 80 λ to prevent residual diffuse emission seen by the shortest baselines from affecting the results. The coordinates of MaxBCG J199 and a 10 arcmin radius around it are also specified to include the source in one single facet. After performing self-calibration cycles on the calibrator, all the fainter sources in the facet are added back and calibrated using the calculated solutions which are assumed to apply to the whole facet. An updated sky model for the region of the sky covering the facet is obtained and then subtracted from the uv data and the whole process is repeated to finally obtain a direction-dependent corrected image for each facet. Finally, a mosaic field image containing all the facets' images is corrected for the primary beam. Re-imaging was performed with different parameters on the target facet to obtain different resolutions and weights to increase sensitivity to diffuse, extended emission. As we were focusing on one single science target, we chose to process only nine facets, i.e. the brightest sources in the field and those bordering the target facet. In addition, the last and 10th facet we processed was the target facet itself, so that it could benefit from the improved subtraction obtained by calibrating the preceding facets. The calibration regions of the processed facets are indicated with yellow boxes in Fig. 1.

2.2 GMRT

We used a follow-up GMRT observation in the range 591–623 MHz to enable a study of the spectral properties of the sources.

⁶ <https://github.com/lofar-astron/factor>

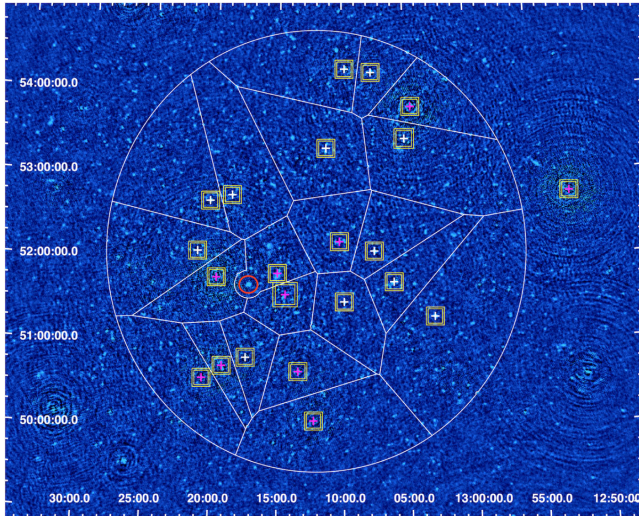


Figure 1. Wide-field high-resolution image with the overlay of the facet layout generated by the Factor pipeline. White regions show the facets and the elliptical region that encompasses the faceted area with a 2.5° radius adjusted for the primary beam shape. Outside this radius, only small patches, which are faster to process, are used. The coordinates of the target were specified in the parameter settings to include the source in one single facet that therefore shows a curved boundary. Each calibrator is indicated with a cross (magenta for the facets that were processed with Factor and white for the non-processed facets) and the region used in the self-calibration step is indicated with a yellow square. The target is indicated with a red circle.

In the GMRT calibration, the sources 3C147 and 3C286 were used as absolute flux and bandpass calibrators, respectively, and were observed for 10–15 min, at the beginning and at the end of the target observation. The source 1400+621 was used as a phase calibrator and was observed every 10–15 min. Data reduction was performed using the Common Astronomy Software Applications (CASA, version 4.5.2; McMullin et al. 2007) tools. After inspecting the data set, bad data were flagged through both manual flagging and using the AOFlogger software (Offringa, van de Gronde & Roerdink 2012). Flux and bandpass calibration were performed against 3C147 and 3C286, adopting the flux scale in Perley & Butler (2013)⁷. Gain phases and amplitudes were calibrated every 10–15 min against 1400+621. One compact source (13:09:46, +51:48:10) residing in the primary lobes of the primary beam was peeled off. To speed up the imaging process, the data set has been averaged in frequency and time (down to 3.2 MHz ch^{-1} and 16 s). Imaging was carried out in CASA, using the multifrequency synthesis (MFS) CLEAN algorithm (Rau & Cornwell 2011) and the wide-field imaging technique to compensate for the non-coplanarity of the array.

Only one cycle of phase self-calibration cycle was needed to reach convergence and obtain an image of the target field, which was finally corrected for the primary beam.

3 RESULTS

To study the emission and its spectral properties, we have made several images at high- and low-resolution, summarized in Table 3

⁷ We used the most updated flux scale, although different from the scale used for LOFAR observations, since the flux difference between the Perley–Butler 2013 and Scaife–Heald models is within the calibration error of 15 per cent.

and shown in Fig. 2. The images obtained for spectral analysis (see Section 3.1) are not shown.

The LOFAR images show that the radio emission associated with MaxBCG J199 is coming from a radio galaxy with a pair of jets and lobes extending from a compact core, and diffuse emission likely connected to the AGN. The core of the radio galaxy is coincident with the optical source SDSS J131716.39+514330.1, which corresponds to the brightest galaxy of the group and is identified as a broad-line galaxy with a redshift of $z = (0.18793 \pm 5) \times 10^{-5}$ (Data Release 13; SDSS Collaboration et al. 2016). However, the structure of the core region appears to be more complex, since SDSS images show three galaxies which create a multiple core system, as visible in the bottom right panel of Fig. 3. Moreover, there is an offset (smaller than beam in the full-resolution LOFAR image) between the peak of the radio emission and the central galaxy seen in the optical image.

The radio diffuse emission has a mean surface brightness of $4.5 \mu\text{Jy arcsec}^{-2}$ at 144 MHz and an extent of 3.4 arcmin, which corresponds to a projected linear size of 650 kpc at the spectroscopic redshift of the BCG⁸. Only the brightest and more compact emission is visible in the GMRT images at the achieved sensitivity level.

We note an asymmetry in the jet intensity and morphology: the NW lobe is brighter and it extends across the direction of the jet axis with a wing in the south-west direction, whereas the SE lobe is fainter, fading away towards the edge, but with a larger projected linear size.

Radio emission at the group coordinates is observed in the following surveys: NVSS at 1.4 GHz, WENSS at 325 MHz and the VLA survey at 1.4 GHz, Faint Images of the Radio Sky at Twenty Centimetres (FIRST; Becker, White & Helfand 1995). NVSS and WENSS are sensitive to emission from sources extended on scales of arcminutes, but their resolution ($45 \text{ arcsec} \times 45 \text{ arcsec}$ and $54 \text{ arcsec} \times 68 \text{ arcsec}$ at the group declination, respectively) and sensitivity (500 and $300 \mu\text{Jy beam}^{-1}$, respectively) are too low to identify features, such as a core or jet emission, in the radio emission. With FIRST, which is a 3-min snapshot with resolution of 5 arcsec, only the region closest to the core is visible. The FIRST image with an overlay of NVSS contours is shown in the top right panel of Fig. 3. In addition, the source is detected in the Green Bank 6 cm survey at 4.85 GHz (GB6; Gregory et al. 1996), and in the VLSSr at 74 MHz. The flux densities from these survey observations can be combined to obtain an integrated radio spectrum (see Section 3.1).

No information about the X-ray emission of the group is available in the literature. The group is not detected in the ROSAT All Sky Survey (RASS; Voges et al. 1999) and no pointed observations exist.

From the NVSS image we measured the integrated flux density at 1.4 GHz to be $S_{\text{tot}, 1.4} = 21 \pm 3 \text{ mJy}$, corresponding to a total radio power of $P_{\text{tot}, 1.4} \sim 2.1 \times 10^{24} \text{ W Hz}^{-1}$.

The core is resolved at 1.4 GHz by FIRST and we measure the integrated flux density of the core region to be $S_{\text{core}, 1.4} = 1.3 \pm 0.2 \text{ mJy}$.

3.1 Spectral analysis

In order to study the spectral properties of MaxBCG J199, we have reimaged LOFAR and GMRT data with a resolution of 19 arcsec,

⁸ The photometric redshift of the galaxy group ($z = 0.18 \pm 0.01$) given in Koester et al. (2007) is not used throughout the paper, instead we use the spectroscopic redshift of the BCG [$z = (0.18793 \pm 5) \times 10^{-5}$] given by SDSS Collaboration et al. (2016) since the radio emission observed is related to that galaxy.

Table 3. Col. 1: telescope/survey; Col. 2: central frequency; Col. 3: minimum baseline; Col. 4: largest angular scale; Col. 5: resolution; Col. 6: rms noise; Col. 7: parameters used for LOFAR and GMRT imaging, such as taper (T) and weighting scheme; when Briggs weighting scheme is used, the robust value is specified (Briggs 1995).

1: Telescope	2: Freq. (MHz)	3: B_{\min} (λ)	4: LAS (arcsec)	5: Res. (arcsec ²)	6: rms (mJy beam ⁻¹)	7: Imaging
LOFAR	144	80	2578	10.6 × 6.0	135	Briggs −0.25
		150	1375	19 × 19	350	uniform, 15 arcsec T
		80	–	27 × 26	350	Briggs 0, 20 arcsec T
GMRT	607	150	1375	6.0 × 4.8	60	Briggs −0.25
		150	–	18 × 17	250	Briggs 0, 20 arcsec T
		150	–	19 × 19	290	uniform, 20 arcsec T
VLSSr	74	94	1100	80 × 80	50 000	–
WENSS	325	150	1375	54 × 68	300	–
NVSS	1400	210	970	45 × 45	500	–
FIRST	1400	1720	60	5.4 × 5.4	200	–

and same pixel size, baseline range (150–49000 λ) and uniform weighting scheme to minimize the effects of differences in the uv coverage of the two interferometers. We have produced a low-frequency spectral index map using CASA tasks, shown in Fig. 4. The spectral index values are calculated in the region where both LOFAR and GMRT images are above 3σ , where σ is 290 and 350 $\mu\text{Jy beam}^{-1}$ for GMRT and LOFAR, respectively. Pixels below 3σ are blanked out. The spectral index error map is obtained using the following equation:

$$\Delta\alpha = \frac{1}{\log \frac{\nu_1}{\nu_2}} \sqrt{\left(\frac{\Delta S_1}{S_1}\right)^2 + \left(\frac{\Delta S_2}{S_2}\right)^2}, \quad (1)$$

where S_1 and S_2 are the flux densities at frequencies ν_1 and ν_2 and ΔS_1 and ΔS_2 are the respective errors which include the measured map noises and flux calibration errors.

The spectral index values range from -1.3 to -1.1 in the core region and inner edges, and from -0.7 to -0.5 at the outer edges. The lobes have spectral index values that flatten towards the outermost lobe edges; this is especially prominent in the NW lobe. We note that the regions that show the flattest spectral indices, which are also regions with large errors, do not match the highest surface brightness regions in the LOFAR and GMRT maps.

The global spectral index value of the source calculated using the integrated flux densities from the area where the GMRT detection is above 3σ is relatively steep: $\alpha_{144}^{607} = -1.14 \pm 0.13$.

The observed LOFAR emission extends well beyond the GMRT emission and the diffuse emission detected at 144 MHz that can not be seen at 607 MHz must be much steeper. This emission is detected by LOFAR even when only the same baselines as the GMRT are imaged. This enables us to derive a spectral index upper limit to the value of $\alpha_{144}^{607} < -1.8 \pm 0.2$, considering the LOFAR integrated flux density of the lobe and a 3σ GMRT flux density upper limit where σ was determined from a set of flux density measurements in the radio galaxy region.

The spectral index map reveals that the emission closest to the radio galaxy core is steep with $\alpha_{144}^{607} < -1$. The core can be seen in the intensity images also at 1.4 GHz (FIRST). Therefore, we can obtain a three-point spectrum of the core region, using LOFAR, GMRT and FIRST images readjusted to have the same uv range, and same beam (6 arcsec)⁹. We measured the flux density from a

region corresponding to the brightest central emission in each map and respective errors that include the measured map noises and flux calibration errors and estimated the spectral index of the core to be $\alpha_{144, 607, 1400} = -1.16 \pm 0.12$ performing a linear fit, as shown in Fig. 5.

In addition to the spectral information derived from our observations with LOFAR and GMRT, we measured the flux densities from VLSSr, WENSS, NVSS and GB6 in the region of MaxBCG J199 constrained by the 3σ LOFAR contours to obtain the integrated radio spectrum of the source shown in Fig. 6. In Table 4, we report all the measurements. They were placed on to the absolute flux density of Baars et al. (1977) by scaling for the multiplicative factor listed in Helmboldt et al. (2008).

We computed the best-fitting synchrotron model of the spectrum using the Broadband Radio Astronomy ToolS (BRATS¹⁰; Harwood et al. 2013; Harwood, Hardcastle & Croston 2015) software package, comparing two models:

(i) the continuous injection (CI; Jaffe & Perola 1973) model for active sources, which assumes that fresh electrons are injected at a constant rate for a duration t_{CI} (Pacholczyk 1970). When the source is active, its radio spectrum changes as a function of time t , and the break frequency ν_b shifts to lower values, via

$$\nu_b \propto \frac{B}{t^2 (B^2 + B_{\text{IC}}^2)}, \quad (2)$$

where B is the magnetic field and B_{IC} is the equivalent magnetic field due to inverse Compton scattering of cosmic microwave background photons.

(ii) the CI_{off} model (Komissarov & Gubanov 1994; Murgia et al. 2011), which extends the Jaffe & Perola model (Jaffe & Perola 1973) to inactive sources. When the electron supply stops, the source enters the quiescence phase of duration t_{off} and the synchrotron age is $t_s = t_{\text{CI}} + t_{\text{off}}$. The break frequency $\nu_{b, \text{off}}$ evolves via

$$\nu_{b, \text{off}} = \frac{\nu_b (t_{\text{off}} + t_{\text{CI}})^2}{t_{\text{off}}^2}. \quad (3)$$

a different scheme. However, the effects of different weighting schemes should not be relevant since only the core region is visible in the FIRST image and it is unresolved.

¹⁰ <http://www.askanastronomer.co.uk/brats>

⁹ We used a uniform weighting scheme to image GMRT and LOFAR data sets, whereas we note that the FIRST image could have been obtained with

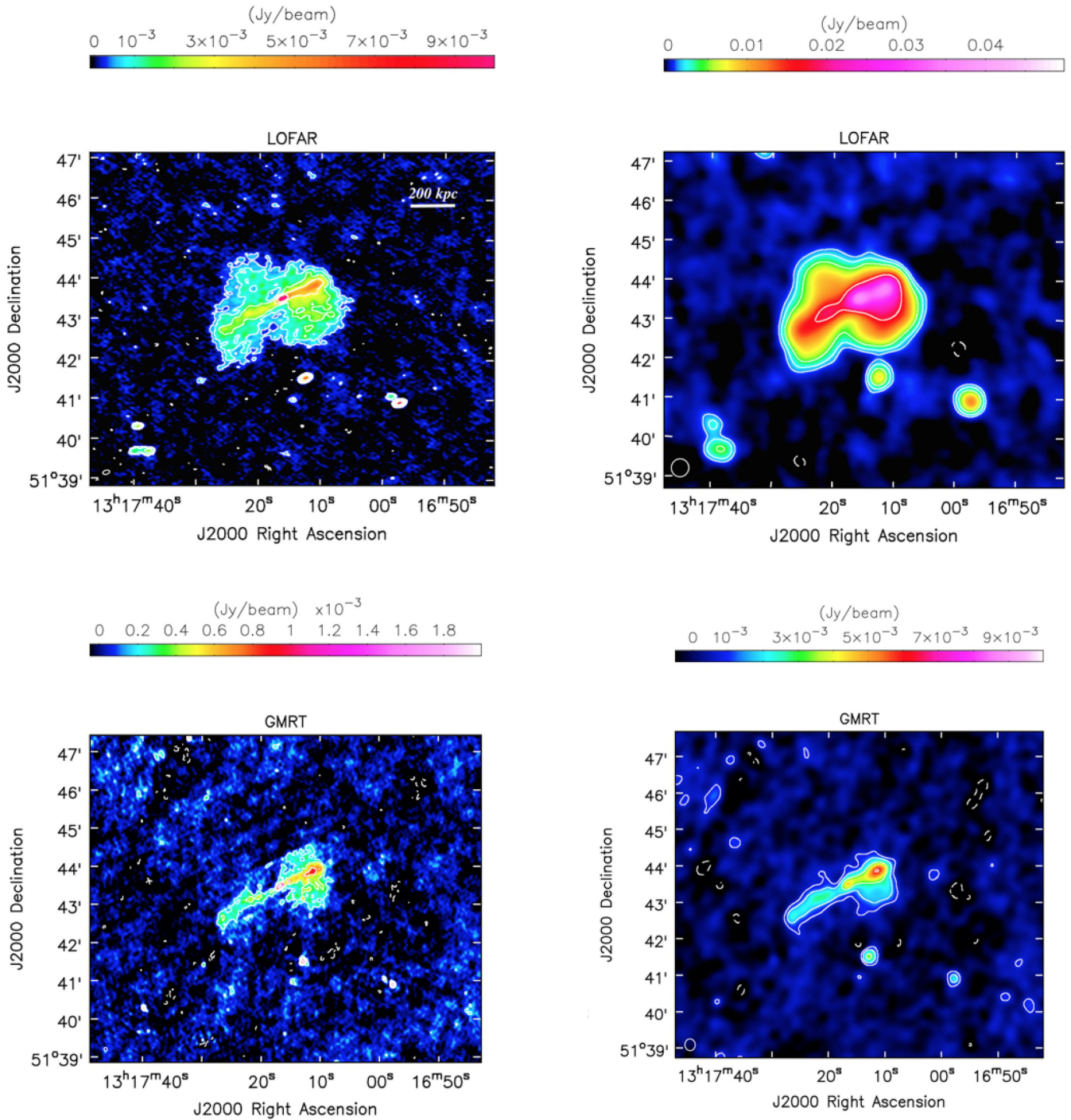


Figure 2. Top left: LOFAR image of MaxBCG J199 at the central frequency 144 MHz obtained with the Briggs scheme (Briggs 1995), robust = -0.25 , and no taper. The contour levels are at $(-1, 1, 2, 4, 8, 16) \times 3\sigma$, where $\sigma = 135 \mu\text{Jy beam}^{-1}$. The beam shown at the bottom left of the image is $10.6 \text{ arcsec} \times 6.0 \text{ arcsec}$. The image shows the presence of a radio galaxy embedded in radio diffuse emission with maximum angular size of 3.4 arcmin , which corresponds to projected linear size of 650 kpc . Top right: LOFAR image of MaxBCG J199 at the central frequency 144 MHz obtained with the Briggs scheme (Briggs 1995), robust = 0 , and taper of 15 arcsec . The contour levels are at $(-1, 1, 2, 4, 8, 16) \times 3\sigma$, where $\sigma = 350 \mu\text{Jy beam}^{-1}$. The beam shown at the bottom left of the image is $27 \text{ arcsec} \times 26 \text{ arcsec}$. No additional diffuse emission can be observed in this image. Bottom left: GMRT image of MaxBCG J199 at the central frequency 607 MHz obtained with the Briggs scheme (Briggs 1995), robust = 0 , and no taper. The contour levels are at $(-1, 1, 2, 4, 8, 16) \times 3\sigma$, where $\sigma = 60 \mu\text{Jy beam}^{-1}$. The beam shown at the bottom left of the image is $6.0 \text{ arcsec} \times 4.8 \text{ arcsec}$. The image shows the presence of the jets of the radio galaxy. Bottom right: GMRT image of MaxBCG J199 at the central frequency 607 MHz obtained with the Briggs scheme (Briggs 1995), robust = -0.25 , and taper of 20 arcsec . The contour levels are at $(-1, 1, 2, 4, 8, 16) \times 3\sigma$, where $\sigma = 250 \mu\text{Jy beam}^{-1}$. The beam shown at the bottom left of the image is $19 \text{ arcsec} \times 17 \text{ arcsec}$. No diffuse emission can be observed in this image.

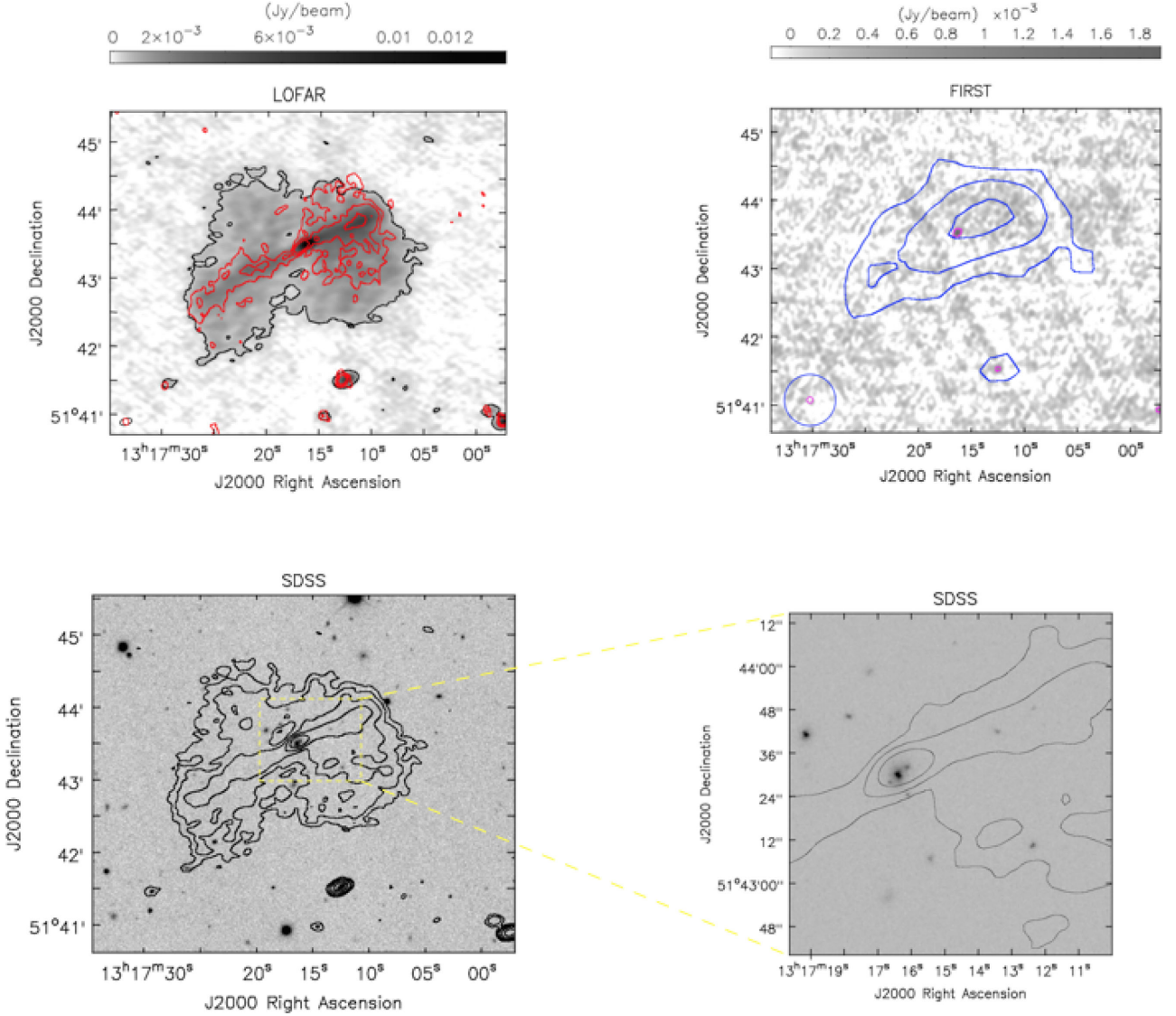


Figure 3. Top left: LOFAR image of MaxBCG J199 at the central frequency 144 MHz in grey-scale with its contour level at 3σ , where $\sigma = 135 \mu\text{Jy beam}^{-1}$ in black. GMRT 607 MHz contours levels at $(1, 2, 4, 8, 16) \times 3\sigma$, where $\sigma = 60 \mu\text{Jy beam}^{-1}$ are overlaid in red. The beams shown at the bottom left of the image are $10.6 \text{ arcsec} \times 6.0 \text{ arcsec}$ and $6.0 \text{ arcsec} \times 4.8 \text{ arcsec}$ for LOFAR and GMRT respectively. Top right: FIRST image of MaxBCG J199 at 1.4 GHz in grey-scale with its contour level at 3σ , where $\sigma = 200 \mu\text{Jy beam}^{-1}$ in magenta. NVSS contours levels at $(1, 2, 4) \times 3\sigma$, where $\sigma = 500 \mu\text{Jy beam}^{-1}$ are overlaid in blue. The beams shown at the bottom left of the image are $5.4 \text{ arcsec} \times 5.4 \text{ arcsec}$ and $45 \times 45 \text{ arcsec}$ for FIRST and NVSS, respectively. With the FIRST snapshot observation only the core region of the radio galaxy is visible, whereas NVSS observation could detect radio emission but without the resolution required to distinguish internal features. Bottom left: SDSS g, r, i mosaic image in grey-scale with LOFAR 144 MHz contour levels at 3σ , where $\sigma = 135 \mu\text{Jy beam}^{-1}$ in black and GMRT 607 MHz contour levels at 3σ , where $\sigma = 60 \mu\text{Jy beam}^{-1}$ in red. The radio diffuse emission surroundings the two jets can be seen only with LOFAR. Bottom right: zoom of the SDSS g, r, i mosaic image in the core region. LOFAR 144 MHz contour levels at $(4, 8, 16) \times 3\sigma$, where $\sigma = 135 \mu\text{Jy beam}^{-1}$ in black. Three galaxies can be seen corresponding to the inner region of the radio emission.

To estimate the magnetic field, we made the simple assumption of equipartition between relativistic particles and a uniform magnetic field and we calculated the minimum energy density u_{min} and the equipartition magnetic field B_{eq} for MaxBCG J199 using the revised formula in Beck & Krause (2005). We adopted the source flux density at 144 MHz, where the energy losses of the synchrotron electrons ($\propto E^2$) should be negligible, the global spectral index value computed in the previous section ($\alpha \sim -1.1$), an electron/proton ratio of 100, and a volume filling factor of 1. Moreover, we assumed ellipsoidal geometry, hence a value of 200 kpc for the source depth. The resulting value is $B_{\text{eq}}[\mu\text{G}] \sim 15$.

The fit to the models and the best-fitting parameters are shown in Fig. 6. For both models, we assumed that the injected particles have a power-law energy spectrum $N(E) \propto E^\delta$ which results in a power-law radiation spectrum with spectral index $\alpha_{\text{inj}} = (\delta + 1)/2$ over a wide range of frequencies. For the injection spectral index, we assumed $\alpha_{\text{inj}} = -0.7$, which is the value measured in the flattest regions of the source. Fixing α_{inj} helps us to limit the number of free parameters for the model. We also neglect adiabatic losses and assume that the pitch angles of the radiating electrons are continually isotropized in a time much shorter than the radiative time-scale, which implies that the synchrotron energy losses are the same for all electrons.

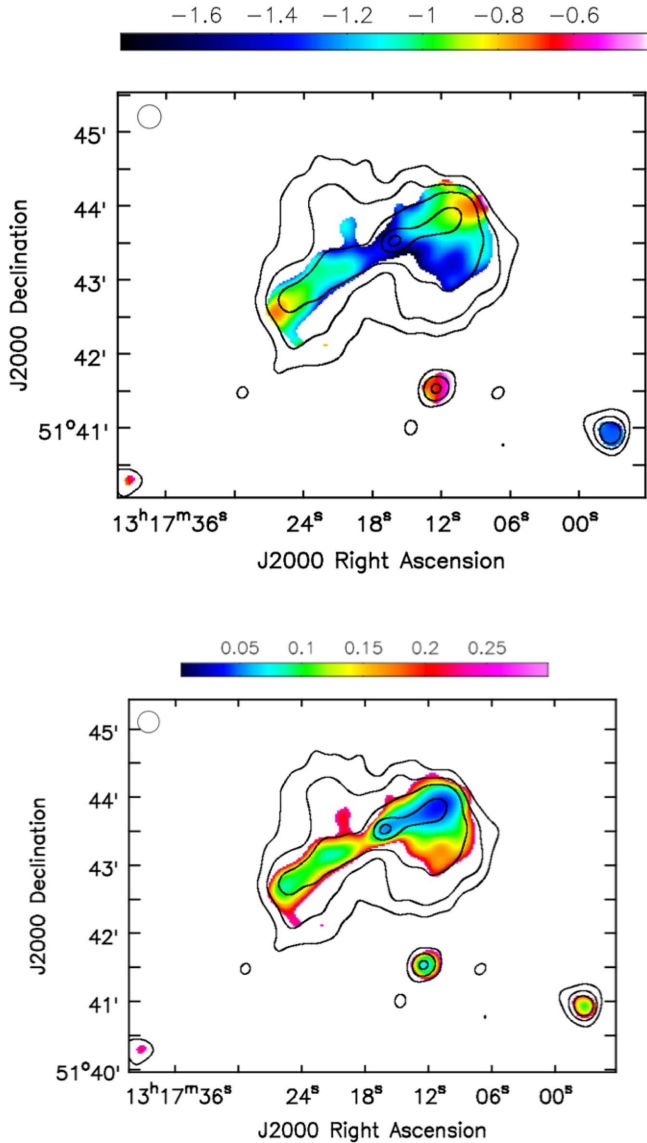


Figure 4. Spectral index map (top) and relative error map (bottom) between the 144 MHz LOFAR image and the 607 MHz GMRT image with an overlay of LOFAR contour levels at $(3, 10, 20, 50, 70) \times \sigma$, where $\sigma = 350 \mu\text{Jy beam}^{-1}$. The beam shown at the top left of the image is $19 \text{ arcsec} \times 19 \text{ arcsec}$.

Using an estimate of the magnetic field strength $B[\mu\text{G}]$ and the break frequency $\nu_b[\text{GHz}]$ obtained from the spectral fitting of CI and CI_{off} models, it is possible to derive the spectral age of the source (Murgia et al. 2011), via

$$t_s[\text{Myr}] = 1590 \frac{B^{0.5}}{(B^2 + B_{\text{IC}}^2) [(1+z)\nu_b]^{0.5}}. \quad (4)$$

Assuming the source magnetic field B constant and equal to the value computed using the above equipartition approach, the characteristic spectral age can be calculated for both models.

The best fit for the CI model is found for the break frequency value 0.6 MHz. However, the age that can be derived is very poorly fitted ($t_{\text{CI}} \sim 830 \text{ Myr}$), since the fit is forced to be as steep as possible before being limited by the low-energy cut-off.

The best fit for the CI_{off} model is found for the break frequency value 439 MHz with an off component break at 12 GHz. The time

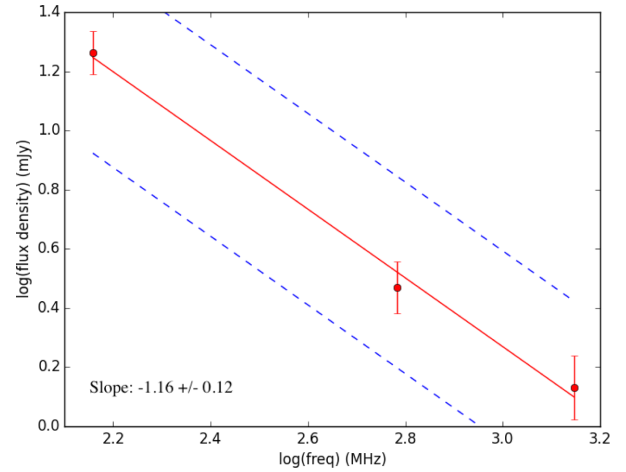


Figure 5. Plot of flux density against frequency with linear fit overlaid for LOFAR, GMRT and FIRST measurements of the core region of MaxBCG J199.

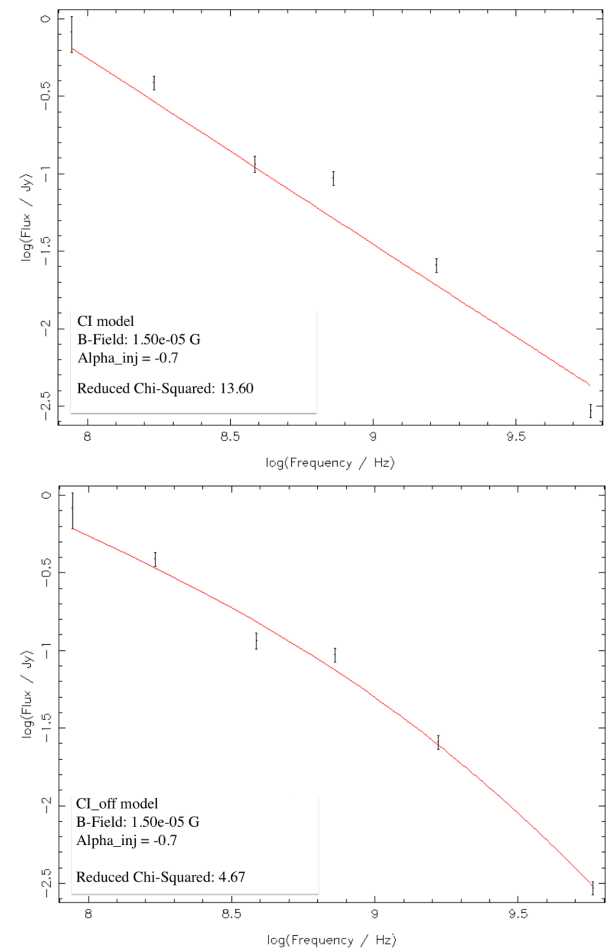


Figure 6. Fit and best-fit parameters of the CI model and CI_{off} model of the integrated radio spectrum.

during which the source has been on and off are estimated to $t_{\text{CI}} \sim 25$ and $t_{\text{off}} \sim 6 \text{ Myr}$, respectively, which give a total age of $t_s \sim 31 \text{ Myr}$.

As recently demonstrated by Harwood (2017), though, the CI and CI_{off} models are unable to provide a robust measure of the source's spectral age. Therefore, the break frequencies derived by modelling the integrated spectrum are to be considered only an indication of

Table 4. Flux densities from VLSSr, LOFAR, WENSS, GMRT, NVSS, and GB6 in the region of MaxBCG J199. All the measurements on to the absolute flux density of Baars et al. (1977).

Central frequency (MHz)	Flux density (mJy)	Error (mJy)
74	823.0	214.0
144	388.0	38.8
325	115.5	14.0
607	93.7	9.4
1400	25.7	2.6
4850	2.9	0.3

the break frequencies of the source, whereas they can provide a potentially useful tool for discerning between active and remnant radio galaxies. Possible interpretations of the origin of this source will be investigated in Section 4.

4 DISCUSSION

At LOFAR frequencies it was possible to resolve the inner structure of the radio emission of the galaxy group MaxBCG J199, hosting a central radio galaxy which shows opposing radio jets, and lobes extending from the core out to hundreds of kpc. The spectrum of the brightest galaxy of the group indicates a broad-line galaxy (Data Release 13; SDSS Collaboration et al. 2016), therefore we expect an inclination of the AGN with respect to the line of sight, i.e. the jets are not in the plane of the sky. Moreover, the structure of the jets clearly shows an asymmetry in brightness that is a further indication that the source is inclined. The jet pointing towards NW is likely to be directed towards the observer, since the intensity of the approaching jet is enhanced as a consequence of bulk relativistic motion (Doppler boosting effect; Rybicki & Lightman 1979). Analysing the statistical distribution of the broad-line AGN orientations, Marin (2016) placed the inclination angle between the jets and the line of sight in the range 0° – 70° , with a mean expected value of 33° .

Luminous jets are typical of FR-I sources since the energy transport from the core to the edges is inefficient due to radiative losses and interaction with the surrounding environment. On the other hand, the spectral index map for this source suggests that there might be electron acceleration at the lobe edges in regions known as hotspots, and a consequential backflow typical of FR-II sources: the two jets are bent by interaction with the intragroup medium and the plasma is aging while travelling back towards the core region. However, clear hotspots are not visible in the intensity maps. As the classification scheme is purely morphological, other observed features, such as the power of the radio galaxy, cannot provide a definitive test of the source’s FR type. The asymmetry in the jets’ brightness suggests Doppler boosting that requires relativistic electrons, and usually the most powerful jets are observed in FR-II sources.

We suggest that the source is a radio galaxy with asymmetric jets and lobes, probably caused by Doppler boosting and interaction with the ambient medium, and with a morphology indicating a FR-I galaxy. However, the morphological classification of this source is challenging due to the variety of characteristics observed. There are no conclusive morphological elements to clearly classify the source as an FR-I or FR-II, therefore we can not exclude the FR-II scenario.

The global spectral index distribution is steeper ($\alpha \sim -1.1$) than that observed in most active radio galaxies. The steep diffuse emis-

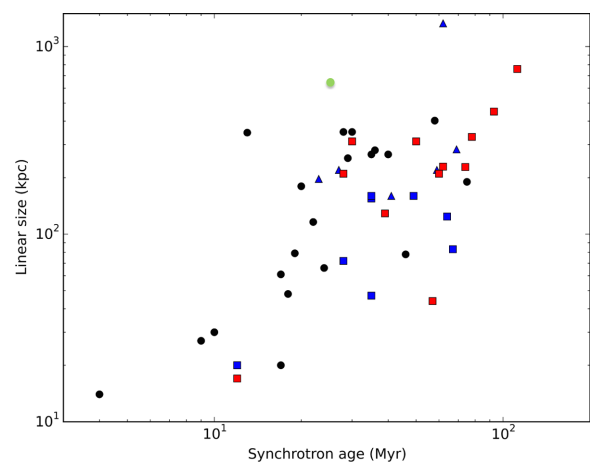


Figure 7. Linear size as a function of the synchrotron age for the sample of low-luminosity radio galaxies in Parma et al. 1999. We added the values for MaxBCG J199, whose age being a lower limit is indicated by a green circle. Squares represent FR-I sources, triangles FR-II sources, and circles sources whose classification is not clear. The colour represents the spectral type: red for type 1, blue for type 2, black for sources whose spectral classification is not clear.

sion that is fairly bright at LOFAR frequencies has not been detected at higher frequency, which allows us to limit the spectral index to $\alpha < -1.8 \pm 0.2$. We interpret this emission as lobe emission seen in projection, i.e. old plasma from the two jets that were forced to bend (or old plasma left behind) by interacting with the ambient medium. The steep spectrum of the inner regions indicates that the particle energy content there is dominated by the low-energy electron population emitting below the sensitivity limit of the GMRT. In this scenario, the oldest plasma is located in the inner regions of the radio galaxy.

The spectral analysis shows that the inner regions have steeper spectral indices compared to the outer lobe regions (we refer to it as spectral type 2). This trend of spectral index steepening in the direction of the core region has already been found in both FR-I and FR-II radio galaxies (e.g. Parma et al. 1999). When the steepening occurs from the core outward, we refer to it as spectral type 1. We compared the linear size LS and synchrotron age of MaxBCG J199 computed via the CI_{off} model with those of low-luminosity radio galaxies (both FR-I and FR-II) in the sample selected by Parma et al. (1999). As shown in Fig. 7, MaxBCG J199 (indicated by a green circle) lays within the correlation $LS \propto t_s^{0.97 \pm 0.17}$. We note that the linear size of MaxBCG J199 is larger than most of the galaxies in the sample, placing it in the upper region of the correlation plot.

The overall integrated flux density (3σ NVSS) at 1.4 GHz is $S_{\text{tot}, 1.4} = 21 \pm 3$ mJy, corresponding to a total radio power of $P_{\text{tot}, 1.4} \sim 2.1 \times 10^{24}$ W Hz $^{-1}$ and the integrated flux density of the core region (3σ FIRST) is $S_{\text{core}, 1.4} = 1.3 \pm 0.2$ mJy, corresponding to a total radio power of $P_{\text{core}, 1.4} \sim 1.3 \times 10^{23}$ W Hz $^{-1}$.

The ratio R of core radio power at 1.4 GHz to total flux density at 150 MHz is defined as core prominence, and is used by a few authors as a criterion to search for remnant sources (e.g. Hardcastle et al. 2016). When $R < 10^{-4} - 5 \times 10^{-3}$, it might indicate a remnant source. However, this method alone is not enough to select remnant sources efficiently. The core prominence of our source is $R = P_{\text{core}, 1.4}/P_{\text{tot}, 1.4} \sim 6 \times 10^{-2}$, which does not place the source in the remnant range.

MaxBCG J199 is an evolved source: material was transported up to hundreds of kpc and then travelled back towards the inner

regions. The youngest plasma is located at the outer lobe edges and regions closer to the host galaxy become progressively older with the oldest material is found close to the core region. However, the compact core of radio galaxies has usually a flat spectrum, on the contrary of what happens in MaxBCG J199, where it shows a steep spectral index. Therefore, we consider two possible scenarios:

(i) the source is still active and the core region has a spectrum steeper than standard active radio galaxies; this could be explained assuming that the steep-spectrum emission from the lobes is preventing us from resolving the core; the active core could be flat ($\alpha \sim 0$) or steep ($\alpha \sim -0.7$; e.g. Laing & Bridle 2014). Assuming the lower limit $\alpha \sim -0.7$ and extrapolating from the 1.4 GHz FIRST flux density ($S_{\text{core}, 1.4}$), we derived the upper limit on the core emission at 144 MHz to be 6.4 mJy. As expected, the result is lower than the measured value $S_{\text{core}, 144} = 8.9 \pm 1.3$ mJy.

(ii) the source could be a dying AGN with the radio emission at the position of the host galaxy being the oldest; the jets and the core are still detectable, but the synchrotron spectrum is steepening towards the inner region that has recently stopped supplying fresh particles through the nuclear activity. Moreover, the core region that includes the base of the NW jet is likely to be beamed.

The spectral trend of the core region supports the dying-scenario, as well as the overall steep spectral value ($\alpha \sim -1.1$). Harwood (2017) shows that there is a significant difference in the spectrum of active and remnant sources and the models used to fit the spectrum can be a good indicator of a source's current state. The model fitting of the spectrum of MaxBCG J199 gives a significantly smaller chi-square value for the CI_{off} model. However, the dying-scenario is not fully convincing since the core region can be seen up to 1.4 GHz, even though showing a low level emission. A more detailed study of the spectrum that would allow for instance a resolved fitting (see Harwood 2017) is needed to better understand the origin of the source and its diffuse emission.

Under simple assumptions, we derived the total radiative ages of the source despite of the problems with CI models applied to radio galaxies. The age estimated through the CI_{off} model is comparable with the ages of known dying radio sources (10^7 – 10^8 Myr; Giacintucci et al. 2007; Parma et al. 2007; Murgia et al. 2011; Brienza et al. 2016c). We note that the dying radio sources presented in Parma et al. 2007, Murgia et al. 2011 and Giacintucci et al. 2007 have been studied at higher radio frequencies than LOFAR and they all have linear sizes <230 kpc, which is much smaller than the size of the radio source in MaxBCG J199. In Brienza et al. (2016c), the discovery of a 700-kpc remnant radio galaxy is reported. The oldest and diffuse emission can be only seen up to 1.4 GHz.

With the present observations, we can not exclude other scenarios. A possibility is that we might also be observing a second episode of activity. Identifying restarting/intermitting AGN is usually related to morphological features, such as multiple radio lobes, the motion of the core or hints of a jet precession. The AGN dormant phase, i.e. the period of inactivity between two episodes, could last from several Myr to tens of Myr. In our case, the source might have switched on after a rotation of the jet axis, leaving a wing in the south-west lobe as a result of the first active phase. In this scenario, the old plasma seen in projection is the aged large-scale structure with an embedded restarted radio source. Distinct episodes of AGN activity in a radio galaxy have already been observed with LOFAR, such as recurrent AGN activity in Shulevski et al. (2015) or an AGN relic with a restarted core in Brienza et al. (2016b). Moreover, the multiple core system might contain more than one AGN, each one of them with a different duty cycle.

5 A SUSPECTED REMNANT SOURCE

Two further interesting sources can be found close to MaxBCG J199: the lensing, X-ray luminous galaxy cluster A1703 (13:15:06.6, +51:49:29; $z = 0.281$), which will be treated in a separate paper (Savini et al., in preparation), and a new radio source (13:15:44.0, +52:10:55.7), which has previously never been detected. This source is clearly visible only in the LOFAR low-resolution images that are more sensitive to diffuse emission than higher resolution (non-tapered) images. The source is shown in Fig. 8 and has an integrated flux density of $S_{144} \sim 600$ mJy.

NVSS, WENSS and other radio surveys do not show any extended diffuse emission in that region of the sky. The extent of the source is ~ 1200 arcsec (20 arcmin). We note that the largest angular scales that NVSS (VLA in D configuration; 1.4 GHz; overlay in right-hand panel in Fig. 8) is 970 arcsec, therefore this source may be partially or completely resolved out in those surveys. The largest angular scale that FIRST and VLSSr (VLA in B configuration, snapshots at 1.4 GHz and 74 MHz, respectively) can observe is 60–1100 arcsec. Only the latter is comparable to the extent of the source. However, no diffuse emission is present, probably due to the very low sensitivity of these snapshots surveys. The GMRT minimum baseline is 150λ , which corresponds to a maximum detectable scale of 1375 arcsec (23 arcmin), which is comparable to the extent of the source (with the caveat that the inner uv coverage could be not sufficient). However, we do not detect any emission in our GMRT observation centred on MaxBCG J199.

Hence, no upper limits on the spectrum can be computed. Observations, such as a LOFAR LBA pointing will help to determine the nature and morphology of this peculiar emission.

We searched in the NASA/IPAC Extragalactic Database (NED)¹¹ for possible counterparts to this diffuse emission. In Fig. 9, the position of close-by galaxy clusters and galaxies with known redshift is shown. We found no massive galaxy clusters in the region of the source within an angular radius of 0.5° . The two galaxies SDSS J131544.56+521213.2 and SDSS J131543.99+521055.7 at the spectroscopic redshift of $z = (0.0587 \pm 2) \times 10^{-4}$ (Adelman-McCarthy et al. 2007) might be associated with the radio emission. The emission detected by LOFAR above 10σ seems to be centred on these two galaxies, which are indicated with dashed circles in the right-hand panel in Fig. 8. Therefore, we speculate that the faint diffuse radio emission in its entire extent is connected to the two galaxies with a projected separation of ~ 79 arcsec that corresponds to ~ 90 kpc. They are classified as an AGN pair by Liu et al. (2011), where interacting AGN pairs with separations from kpc to tens of kpc are optically selected from SDSS (Data Release 7; Abazajian et al. 2009). This implies that the supermassive black holes (SMBH) in their nuclei are active during the same stage of a galaxy–galaxy merger, and accretion on to the SMBH and host-galaxy star formation is enhanced by the galaxy tidal interactions (Liu, Shen & Strauss 2012). At the spectroscopic redshift of this AGN pair, the extension of the source would be ~ 1 Mpc. The northern member of the AGN pair is located at the peak of the radio emission, while the second member is offset from the second peak of the radio emission. One possible scenario is that the optical galaxies are actually dying radio galaxies which interacted as an AGN pair in the past, and whose radio emission might be old and steep. The lobes are fading away and the emission can be interpreted as a radio remnant source.

¹¹ <https://ned.ipac.caltech.edu>

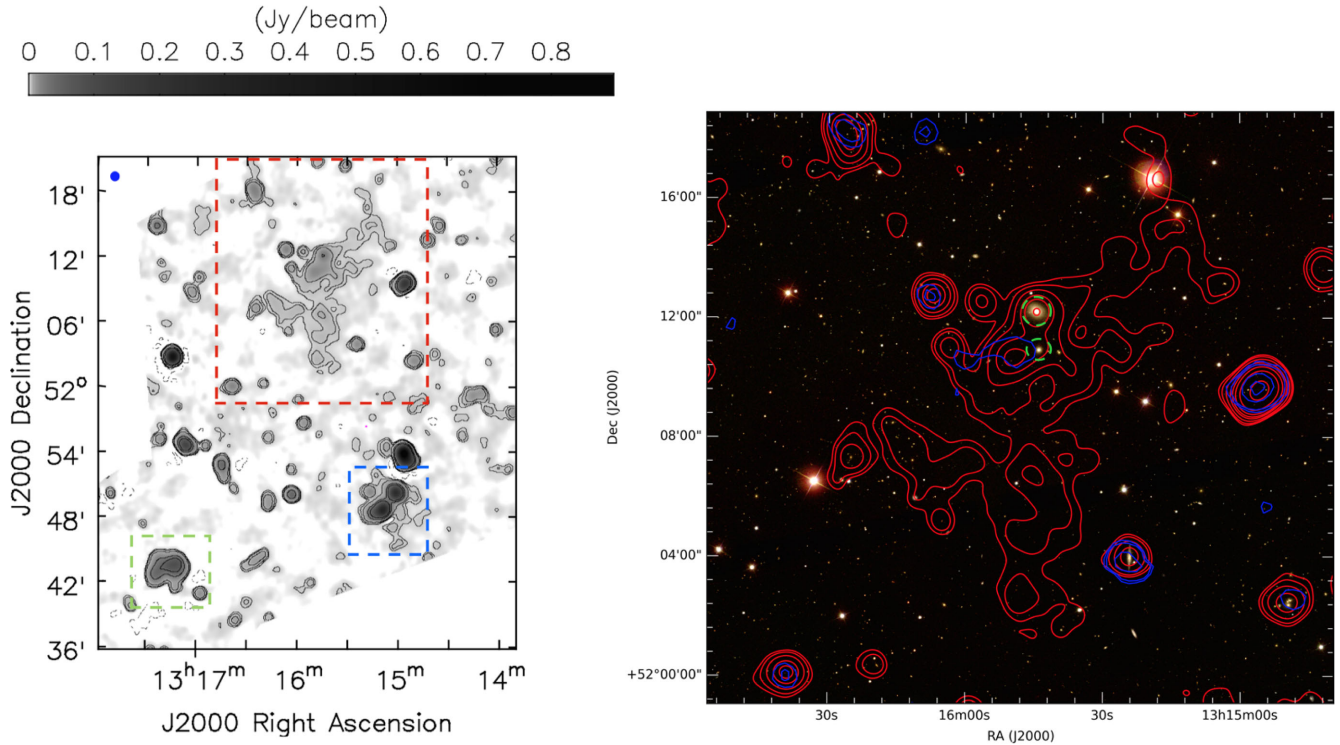


Figure 8. *Left panel:* Target facet image at the central frequency 144 MHz obtained with the Briggs scheme (Briggs 1995), robust = 0.2, and 30′ taper. The contour levels are at $(-3, 3, 5, 10, 50, 100) \times \sigma$, where $\sigma = 450 \mu\text{Jy beam}^{-1}$. The beam shown in blue at the top left is $50'' \times 47''$. MaxBCG J199 (green square) is at the south-east, A1703 (blue square) at the south west and the new diffuse source (red square) extends to the north side of the facet. *Right panel:* SDSSg,r,i mosaic image of the diffuse source with radio contours from NVSS in blue and LOFAR in red. NVSS contour levels are at $(3, 5, 20, 40) \times \sigma$, where $\sigma = 440 \mu\text{Jy beam}^{-1}$. LOFAR contour levels are at $(3, 5, 10, 20, 30, 50, 100, 300) \times \sigma$, where $\sigma = 450 \mu\text{Jy beam}^{-1}$. The two galaxies at a redshift of $z = (0.0587 \pm 2) \times 10^{-4}$ that might be associated with this radio emission are indicated with green dashed circles.

We note that the shape of this source is comparable with the dying radio galaxy WNB 1851+5707a seen at 1.4 GHz, although the latter extends on a much smaller scale (fig. 6 in Murgia et al. 2011).

6 SUMMARY

We present the discovery of extended radio emission at LOFAR frequencies at the coordinates of the galaxy group MaxBCG J199 (RA = 13:17:16.4, DEC = +51:43:30.0, J2000). SDSS photometric data reveal a total of 13 galaxies within this group and a multiple core system composed of three galaxies. We performed the reduction of the LOFAR data using the facet calibration method to reach a rms noise of $135 \mu\text{Jy beam}^{-1}$ and resolution of 10.6×6.0 arcsec at HBA frequencies (120–168 MHz). LOFAR observations show that the radio diffuse emission is connected to a central radio galaxy whose powerful radio jets and lobes extend on angular scales of 3.4 arcmin, corresponding to a linear size of 650 kpc at the spectroscopic redshift of the source. The core of the radio galaxy is coincident with the brightest galaxy of the group at $z = (0.18793 \pm 5) \times 10^{-5}$.

We obtained a GMRT follow-up observation at 607 MHz to study the spectral properties of the sources. GMRT images reach a rms noise of $60 \mu\text{Jy beam}^{-1}$ at $6.0 \text{ arcsec} \times 4.8 \text{ arcsec}$ resolution. LOFAR images show a greater extent than GMRT emission: only the brightest and more compact emission is visible in the GMRT image, which can be used to obtain a low-frequency spectral index map. The spectral index values range from -1.3 to -1.1 in the core region and inner edges, and from -0.7 to -0.5 at the outer edges, therefore it steepens going towards the inner regions. The global spectral index value of the source calculated using the integrated

flux densities above 3σ from GMRT and LOFAR is relatively steep, around -1.1 . The diffuse emission detected at 120–168 MHz that can not be seen at 591–623 MHz must be steeper, and we place an upper limit of -1.8 ± 0.2 . We interpret this emission as old lobe emission seen in projection. The extension of the source suggests a strong nuclear activity of the central engine. The low-frequency spectral index map obtained between LOFAR and GMRT images reveals a steepening of the spectrum from the lobe outer edge inward and a steep core, which is in disagreement with the usual spectrum of active nuclei. Moreover, the spectral index map indicates activity only at the edge of the lobes. Therefore, we considered two possible interpretations: the source is active, but we observe a mix of core and steep spectrum emission that causes the spectral index of the core to appear steeper than it really is; or the source is dying, i.e. the AGN has recently entered a phase of quiescence, where the nucleus stopped supplying fresh electrons to the lobes.

We conclude that the radio source found in MaxBCG J199 is an evolved radio-loud AGN surrounded by diffuse emission that can be best studied with LOFAR and is likely related to old plasma left behind by the jets forming the lobes or a continuation of the lobes that experienced a backflow at the edges. The two jets are interacting with the intragroup medium that shows asymmetrical features in the lobe regions.

These observations probe the great potential of LOFAR to detect old plasma, and demonstrate that low-energy electrons are present in the intragroup medium, and could furnish a seed population for particle re-acceleration mechanisms. The source that we have presented in this paper is an example of steep-spectrum radio source that low-frequency surveys, such as LoTSS, can discover.

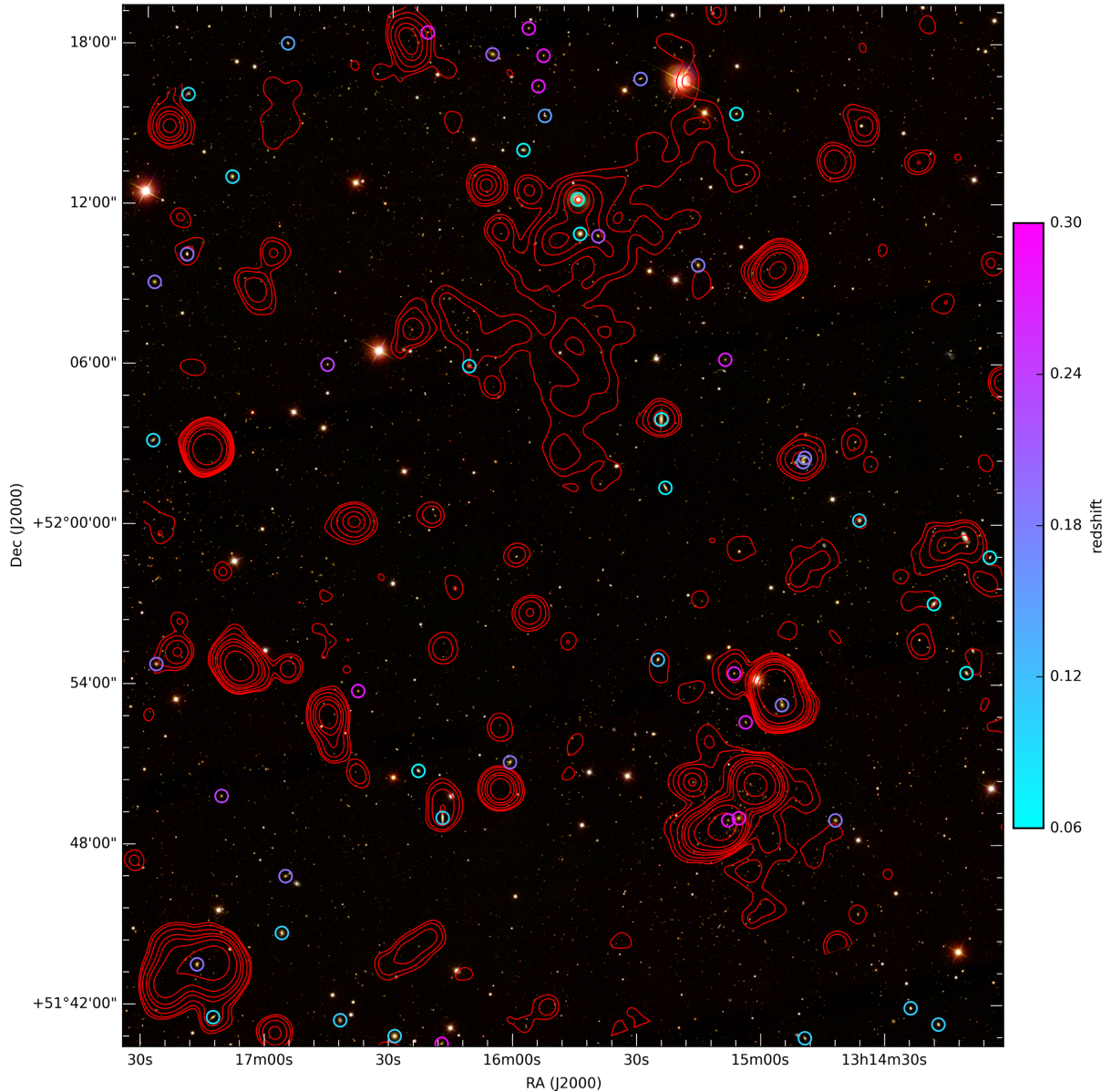


Figure 9. SDSS *g,r,i* mosaic image of the target facet. LOFAR contour levels are at $(-3, 3, 5, 10, 50, 100) \times \sigma$, where $\sigma = 450 \mu\text{Jy beam}^{-1}$. Galaxies with known spectroscopic redshift are marked with circles colored by their corresponding redshift.

ACKNOWLEDGEMENTS

LOFAR, the Low Frequency Array designed and constructed by ASTRON, has facilities owned by various parties (each with their own funding sources), and that are collectively operated by the International LOFAR Telescope (ILT) foundation under a joint scientific policy.

We would like to thank the staff of the GMRT that made the observation possible. GMRT is run by the National Centre for Radio Tata Institute of Fundamental Research.

The research leading to these results has received funding from the European Research Council under the European Union's Seventh Framework Programme (FP/2007-2013)/ERC Advanced Grant RADIOLIFE-320745. M. J. Hardcastle acknowledges support from the UK Science and Technology Facilities Council [ST/M001008/1]. P. N. Best is grateful for support from the UK STFC via grant ST/M001229/1. A. O. Clarke gratefully

acknowledges support from the European Research Council under grant ERC-2012-StG-307215 LODESTONE.

This research made use of the NASA/IPAC Extragalactic Database (NED), which is operated by the Jet Propulsion Laboratory, California Institute of Technology, under contract with the National Aeronautics and Space Administration.

This research made use of APLpy, an open-source plotting package for Python hosted at <http://aplpy.github.com>.

F. Savini thanks Steven N. Shore (University of Pisa) for his helpful comments.

REFERENCES

- Abazajian K. N. et al., 2009, *ApJS*, 182, 543
 Adelman-McCarthy J. K. et al., 2007, *ApJS*, 172, 634

- Baars J. W. M., Genzel R., Pauliny-Toth I. I. K., Witzel A., 1977, *A&A*, 61, 99
- Beck R., Krause M., 2005, *Astronomische Nachrichten*, 326, 414
- Becker R. H., White R. L., Helfand D. J., 1995, *ApJ*, 450, 559
- Bower R. G., Lucey J. R., Ellis R. S., 1992, *MNRAS*, 254, 601
- Brienza M., Godfrey L., Morganti R., 2016a, Remnant radio galaxies in the LOFAR Lockman Hole. In *Active Galactic Nuclei: What's in a Name? Proceedings of a conference held 27 June – 1 July, 2016 in Garching*, p. 102
- Brienza M., Morganti R., Shulevski A., Godfrey L., Vilchez N., 2016b, *Astron. Nachr.*, 337, 31
- Brienza M. et al., 2016c, *A&A*, 585, A29
- Briggs D. S., 1995, New Mexico Institute of Mining Technology, Socorro, New Mexico, USA
- Clarke A. O. et al., 2017, *A&A*, 601, A25
- Condon J. J., Cotton W. D., Greisen E. W., Yin Q. F., Perley R. A., Taylor G. B., Broderick J. J., 1998, *AJ*, 115, 1693
- Croston J. H., Hardcastle M. J., 2014, *MNRAS*, 438, 3310
- Croston J. H., Hardcastle M. J., Birkinshaw M., 2005, *MNRAS*, 357, 279
- Fabian A. C., Nulsen P. E. J., Canizares C. R., 1991, *A&A Rev.*, 2, 191
- Giacintucci S., Venturi T., Murgia M., Dallacasa D., Athreya R., Bardelli S., Mazzotta P., Saikia D. J., 2007, *A&A*, 476, 99
- Giacintucci S. et al., 2011, *ApJ*, 732, 95
- Gregory P. C., Scott W. K., Douglas K., Condon J. J., 1996, *ApJS*, 103, 427
- Hansen S. M., McKay T. A., Wechsler R. H., Annis J., Sheldon E. S., Kimball A., 2005, *ApJ*, 633, 122
- Hardcastle M. J. et al., 2016, *MNRAS*, 462, 1910
- Harwood J. J., 2017, *MNRAS*, 466, 2888
- Harwood J. J., Hardcastle M. J., Croston J. H., Goodger J. L., 2013, *MNRAS*, 435, 3353
- Harwood J. J., Hardcastle M. J., Croston J. H., 2015, *MNRAS*, 454, 3403
- Helmboldt J. F., Kassim N. E., Cohen A. S., Lane W. M., Lazio T. J., 2008, *ApJS*, 174, 313
- Jaffe W. J., Perola G. C., 1973, *A&A*, 26, 423
- Kaiser C. R., Alexander P., 1999, *MNRAS*, 305, 707
- Kardashev N. S., 1962, *Soviet Ast.*, 6, 317
- Koester B. P. et al., 2007, *ApJ*, 660, 239
- Komissarov S. S., Gubanov A. G., 1994, *A&A*, 285, 27
- Kravtsov A. V., Borgani S., 2012, *ARA&A*, 50, 353
- Laing R. A., Bridle A. H., 2014, *MNRAS*, 437, 3405
- Lane W. M., Cotton W. D., Helmboldt J. F., Kassim N. E., 2012, *Radio Sci.*, 47, RS0K04
- Liu X., Shen Y., Strauss M. A., Hao L., 2011, *ApJ*, 737, 101
- Liu X., Shen Y., Strauss M. A., 2012, *ApJ*, 745, 94
- Marin F., 2016, *MNRAS*, 460, 3679
- McMullin J. P., Waters B., Schiebel D., Young W., Golap K., 2007, in Shaw R. A., Hill F., Bell D. J., eds, *ASP Conf. Ser. Vol. 376, Astronomical Data Analysis Software and Systems XVI*. Astron. Soc. Pac., San Francisco, p. 127
- Murgia M., Fanti C., Fanti R., Gregorini L., Klein U., Mack K.-H., Vigotti M., 1999, *A&A*, 345, 769
- Murgia M. et al., 2011, *A&A*, 526, A148
- Offringa A. R., van de Gronde J. J., Roerdink J. B. T. M., 2012, *A&A*, 539, A95
- O'Sullivan E., Worrall D. M., Birkinshaw M., Trinchieri G., Wolter A., Zezas A., Giacintucci S., 2011, *MNRAS*, 416, 2916
- Pacholczyk A. G., 1970, *Radio Astrophysics. Nonthermal Processes in Galactic and Extragalactic Sources*. W. H. Freeman, San Francisco
- Parma P., Murgia M., Morganti R., Capetti A., de Ruiter H. R., Fanti R., 1999, *A&A*, 344, 7
- Parma P., Murgia M., de Ruiter H. R., Fanti R., Mack K.-H., Govoni F., 2007, *A&A*, 470, 875
- Perley R. A., Butler B. J., 2013, *ApJS*, 204, 19
- Planck Collaboration XIII, 2016, *A&A*, 594, A13
- Rau U., Cornwell T. J., 2011, *A&A*, 532, A71
- Rengelink R. B., Tang Y., de Bruyn A. G., Miley G. K., Bremer M. N., Roettgering H. J. A., Bremer M. A. R., 1997, *A&AS*, 124
- Röttgering H. J. A. et al., 2006, *Astrophysics*, preprint ([arXiv: astro-ph/0610596](https://arxiv.org/abs/astro-ph/0610596))
- Rozo E. et al., 2009, *ApJ*, 699, 768
- Rybicki G. B., Lightman A. P., 1979, *Radiative Processes in Astrophysics*. Wiley-Interscience, New York, p. 393
- Rykoff E. S. et al., 2012, *ApJ*, 746, 178
- Scaife A. M. M., Heald G. H., 2012, *MNRAS*, 423, L30
- SDSS Collaboration et al., 2016, *ApJS*, preprint ([arXiv:1608.02013](https://arxiv.org/abs/1608.02013))
- Shimwell T. W. et al., 2016, *MNRAS*, 459, 277
- Shimwell T. W. et al., 2017, *A&A*, 598, A104
- Shulevski A. et al., 2015, *A&A*, 579, A27
- Shulevski A. et al., 2017, *A&A*, 600, A65
- van Haarlem M. P. et al., 2013, *A&A*, 556, A2
- van Weeren R. J. et al., 2016a, *ApJS*, 223, 2
- van Weeren R. J. et al., 2016b, *ApJ*, 818, 204
- van Weeren R. J. et al., 2017, *Nature Astron.*, 1, 0005
- Voges W. et al., 1999, *A&A*, 349, 389
- York D. G. et al., 2000, *AJ*, 120, 1579

This paper has been typeset from a $\text{\TeX}/\text{\LaTeX}$ file prepared by the author.