



Publication Year	2019
Acceptance in OA	2020-12-23T11:21:34Z
Title	The luminosity-volume test for cosmological fast radio bursts
Authors	Locatelli, N., Ronchi, M., GHIRLANDA, Giancarlo, GHISELLINI, Gabriele
Publisher's version (DOI)	10.1051/0004-6361/201834722
Handle	http://hdl.handle.net/20.500.12386/29147
Journal	ASTRONOMY & ASTROPHYSICS
Volume	625

The luminosity–volume test for cosmological fast radio bursts

N. Locatelli^{1,2}, M. Ronchi^{3,4}, G. Ghirlanda^{4,3,5}, and G. Ghisellini⁴

¹ Università di Bologna, Dip. di Fisica & Astronomia DIFA, Via Gobetti 92, Bologna, Italy
e-mail: locatelli@ira.inaf.it

² INAF – Istituto di Radioastronomia, Via Gobetti 92, Bologna, Italy

³ Università degli Studi di Milano-Bicocca, Dip. di Fisica “G. Occhialini”, Piazza della Scienza 3, 20126 Milano, Italy

⁴ INAF – Osservatorio Astronomico di Brera, Via Bianchi 46, 23807 Merate, Italy

⁵ INFN – Sezione di Milano Bicocca, Piazza della Scienza 3, 20126 Milano, Italy

Received 26 November 2018 / Accepted 1 April 2019

ABSTRACT

We have applied the luminosity–volume test, also known as $\langle V/V_{\max} \rangle$, to fast radio bursts (FRBs). We compare the 23 FRBs, recently discovered by ASKAP, with 20 of the FRBs found by Parkes. These samples have different flux limits and correspond to different explored volumes. We put constraints on their redshifts with probability distributions (PDFs) and applied the appropriate cosmological corrections to the spectrum and rate in order to compute the $\langle V/V_{\max} \rangle$ for the ASKAP and Parkes samples. For a radio spectrum of FRBs $\mathcal{F}_\nu \propto \nu^{-1.6}$, we found $\langle V/V_{\max} \rangle = 0.68 \pm 0.05$ for the ASKAP sample, that includes FRBs up to $z = 0.72^{+0.42}_{-0.26}$, and 0.54 ± 0.04 for Parkes, that extends up to $z = 2.1^{+0.47}_{-0.38}$. The ASKAP value suggests that the population of FRB progenitors evolves faster than the star formation rate, while the Parkes value is consistent with it. Even a delayed (as a power law or Gaussian) star formation rate cannot reproduce the $\langle V/V_{\max} \rangle$ of both samples. If FRBs do not evolve in luminosity, the $\langle V/V_{\max} \rangle$ values of ASKAP and Parkes sample are consistent with a population of progenitors whose density strongly evolves with redshift as $\sim z^{2.8}$ up to $z \sim 0.7$.

Key words. methods: statistical – radio continuum: general

1. Introduction

Fast radio bursts (FRB) are very rapid (~ 0.1 – 10 ms) and bright (~ 0.1 – 1 Jy) radio pulses typically observed at ~ 1 GHz frequency. Their detection is characterised by a frequency-dependent delay ($\propto \nu^{-2}$) of the arrival time and a frequency-dependent broadening ($\propto \nu^{-4}$) of the radio signal. These are typical signatures of a signal propagating through a low-density relativistic plasma. The signal dispersion is quantified by the dispersion measure (DM), proportional to the integral of the free electron density n_e along the line-of-sight (LOS) from the observer to the source.

A collection of 52 FRBs has been made public through a database¹ by Petroff et al. (2016). The large values of the observed dispersion measure DM_{obs} (Lorimer et al. 2007; Thornton et al. 2013) and the detection of the host galaxy for the repeating FRB 121102 (Marcote et al. 2017), seem to favour their extra-galactic nature. The host galaxy redshift $z \sim 0.19$ (Chatterjee et al. 2017; Tendulkar et al. 2017) is in fact consistent with the distance estimated from the observed DM. Despite the confirmed extra-galactic origin of this source, the fact that it remains the only repeater holds the possibility that it could be representative of a different class.

The “debate” on the origin of FRBs reminds much of the similar case of gamma ray bursts (GRBs; see Kulkarni 2018). Indeed, if extragalactic, FRBs have νL_ν luminosities around 10^{43} erg s⁻¹ and energetics of the order of 10^{40} erg (Fig. 1).

Such large energies and short durations imply a huge brightness temperature, of the order of $T_B \sim 10^{34}$ – 10^{37} K. This in turn requires a coherent radiation process possibly originating from masers or compact bunches of emitting particles, as it has been

recognised by many authors (Ghisellini 2017; Kumar et al. 2017; Yang & Zhang 2017; Ghisellini & Locatelli 2018; Katz 2018).

Many of the proposed progenitor theories of extragalactic FRBs include merging of compact objects such as neutron stars (Totani 2013); or white dwarfs (Kashiyama et al. 2013). FRBs could be flares from magnetars (Totani 2013; Thornton et al. 2013; Lyubarsky 2014; Beloborodov 2017) or giant pulses from pulsars (Cordes & Wasserman 2015), or they could be associated to the collapse of supra-massive neutron stars (Zhang 2014; Falcke & Rezzolla 2014); or dark matter induced collapse of neutron stars (Fuller & Ott 2015). See Platts et al. (2018), for an updated list of FRB theories.

A classical way to probe the unknown distance of a population of objects is through the $\langle V/V_{\max} \rangle$ test (also called luminosity–volume test). Firstly proposed by Schmidt (1968), the $\langle V/V_{\max} \rangle$ tests whether the distribution of objects is uniform within the volume of space defined by the observational selection criteria. Among other advantages, it is suitable for samples containing few objects and allows to combine samples of sources obtained with different selection criteria. Historically, it has been employed to study the space distribution of quasars and to assess the cosmic evolution of their population.

For a uniform population of sources with measured fluxes S , V/V_{\max} are the ratios of the volume V within which each source is distributed to the maximum volume V_{\max} within which each source could still be detected (which is individually defined by the sample selection flux limit). In an Euclidean space V/V_{\max} should be uniformly distributed between 0 and 1 with an average value $\langle V/V_{\max} \rangle = 0.5$. Equivalently the cumulative source count distribution is $N(>S) \propto S^{-3/2}$.

The standard Euclidean approach to the luminosity–volume test has been performed on FRBs by different authors:

¹ Fast Radio Burst Catalog (FRBCAT), <http://frbcatalog.org/>

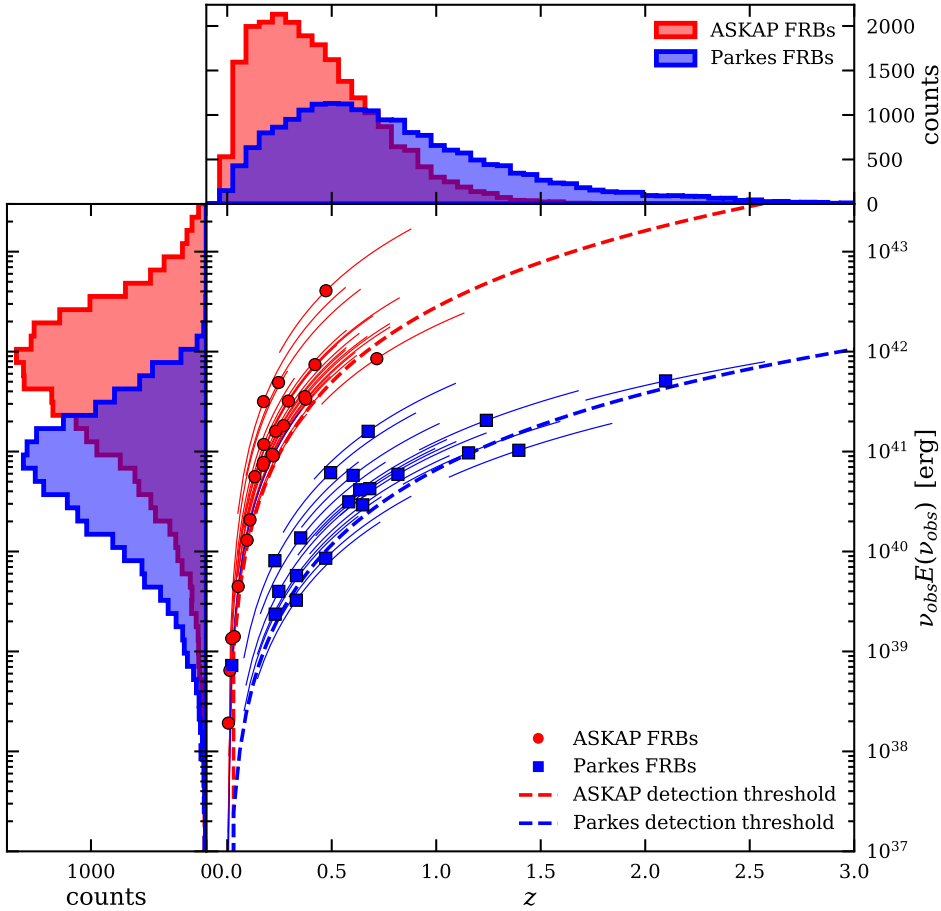


Fig. 1. Energy (νE_ν) as a function of redshift for FRBs detected by ASKAP (red circles) and Parkes (blue squares). The dashed lines correspond to the fluence limit for ASKAP and Parkes (red and blue respectively) obtained assuming the average FRB duration of the respective samples. *Top and right panels:* energy and redshift distributions of the two samples (same colour coding of the central plot). The thin curves represent, for each data point, the 1σ uncertainty on the energy produced by the uncertainty on the redshift.

Oppermann et al. (2016) find $N(>S) \propto S^{-n}$ with $0.8 \leq n \leq 1.7$; Caleb et al. (2016), report $n = 0.9 \pm 0.3$ Li et al. (2017) find a much flatter population with $n = 0.14 \pm 0.20$. More recently, James et al. (2019; hereafter J18), updated these results with 23 new FRBs (Shannon et al. 2018) discovered by the ASKAP array through the CRAFT survey (Macquart et al. 2010). They find $n = 1.52 \pm 0.24$ for the combined ASKAP and Parkes FRB samples. However, for the first time, they compare different surveys with sufficient statistics, claiming a significant difference between the ASKAP CRAFT ($n = 2.20 \pm 0.47$) and Parkes HTRU ($n = 1.18 \pm 0.24$) surveys, respectively.

However, the assumption of a uniform distribution in Euclidean space for the number counts – $\langle V/V_{\max} \rangle$ test does not deal with the transient nature of FRBs. In this paper we performed the volume–luminosity test using the redshift estimated through the DM. We accounted for the possible uncertainty on z in terms of a probability density function (PDF) which encodes the uncertainties on (i) the Galactic free electron density model; (ii) the baryon distribution in the Inter-Galactic Medium (IGM) and (iii) the free electron density model of the FRB host environment. Furthermore, we applied to each FRB the appropriate K -correction and accounted for the proper transformation from the observed to the intrinsic rate.

In Sect. 2 we present the two FRB samples used; in Sect. 3 we describe how to derive their $\langle V/V_{\max} \rangle$ accounting for their cosmological nature. A Monte Carlo approach is adopted to perform the $\langle V/V_{\max} \rangle$ for cosmological rate distributions (3.2) and compare with the real samples in Sect. 4. In Sect. 5 we discuss our results, and in Sect. 6 we draw our conclusions. We adopted a standard cosmology with $\Omega_{\max} = 0.286$, $h = 0.696$ and $\Omega_\Lambda = 0.714$.

2. Data samples

The ASKAP array of radio telescopes and the Parkes telescope provided two relatively large and well defined samples of FRBs which allow us to perform statistical analysis. From the online catalogue FRBCAT² (Petroff et al. 2016), we collected all ASKAP and Parkes FRBs that have been confirmed via publication with a known signal-to-noise ratio (S/N) threshold.

2.1. ASKAP

We considered the 23 FRBs detected by ASKAP and recently published by Shannon et al. (2018) and Macquart et al. (2019). The ASKAP survey has an exposure of $5.1 \times 10^5 \text{ deg}^2 \text{ h}$, a field of view of 20 deg^2 and a unique S/N threshold of 9.5 which corresponds to a limiting fluence of $23.16 \times (w_{\text{obs}}/1 \text{ ms})^{1/2} \text{ Jy ms}$ (Shannon et al. 2018). Although FRB 171216 has been detected with a $S/N = 8$ in a single beam, it has a $S/N = 10.3$ considering its detection in the two adjacent beams (Shannon et al. 2018) and we then included this event in our sample.

The ASKAP sample is shown in Fig. 1 (red circles). To properly compare the energy density of FRBs at different redshifts we evaluated the energies at the observed frequency $\nu_{\text{obs}} = 1.3 \text{ GHz}$ for all the FRBs. We applied the K -correction assuming an energy power law spectrum $E_\nu \propto \nu^{-\alpha}$ with $\alpha = 1.6$ (Macquart et al. 2019). Therefore the K -corrected energy density is given by Eq. (A.3), $E_\nu(\nu_{\text{obs}}) = E_\nu(\nu_{\text{rest}})(1+z)^\alpha$. The red dashed line corresponds to the ASKAP limiting fluence assuming the average intrinsic duration of the ASKAP sample

² Available at <http://www.frbcats.org>

$\langle w_{\text{rest}} \rangle = 2.2$ ms. The observed pulse duration (which defines the limiting curve – see above) scales as $w_{\text{obs}} = \langle w_{\text{rest}} \rangle (1+z)$. Because of the large field of view and the high fluence threshold, the ASKAP survey is more sensitive to nearer and relatively powerful events. This is evident in the redshift and energy distributions (top and left panels of Fig. 1) of the ASKAP sample whose mean values are $\langle z \rangle = 0.25$ and $\langle E \rangle = 4.3 \times 10^{41}$ erg respectively.

2.2. Parkes

Among all Parkes FRBs we found 20 verified events with known S/N threshold. In this case, since FRBs were detected in various surveys with different instrumental setups, the S/N threshold is not equal for all FRBs and therefore the corresponding fluence limit is not unique. The mean fluence limit of this sample results $0.54 \times (w_{\text{obs}}/1 \text{ ms})^{1/2}$ Jy ms and is represented by the dashed blue line in Fig. 1. Compared with ASKAP, the Parkes telescope is characterised by a smaller field of view ($\sim 0.01 \text{ deg}^2$) and a lower fluence limit being thus sensitive to more distant and less powerful events on average (cf. the distributions in the top and left panels of Fig. 1). The total exposure of the HTRU survey made at Parkes is $1441 \text{ deg}^2 \text{ h}$ (Champion et al. 2016). The mean redshift and energy of the Parkes sample are $\langle z \rangle = 0.67$ and $\langle E \rangle = 7.2 \times 10^{40}$ erg, respectively.

The total sample includes 43 FRBs. When different data analyses for the same FRB were found, we chose the one computed with the method presented in Petroff et al. (2016) (if available) in order to build a uniform sample and because alternative searches tend to under-estimate the S/N (see Keane & Petroff 2015). Table 3 lists the galactic longitude and latitude (gl and gb), the observed dispersion measure (DM_{obs}), the signal-to-noise ratio (S/N), the survey S/N threshold (S/N_{lim}), fluence $\mathcal{F}(\nu_{\text{obs}})$, duration w_{obs} and flux density $S(\nu_{\text{obs}})$ all evaluated at the observed frequency ν_{obs} , the redshift calculated as presented in Sect. 3 and the references of the S/N_{lim} for all the 43 FRBs in our sample.

3. Method

Redshift information is necessary to perform the luminosity-volume test for a cosmological population of sources. In order to estimate z , Ioka (2003) and Inoue (2004) proposed a linear relation between the redshift and the dispersion measure due to the IGM (DM_{IGM}):

$$DM_{\text{IGM}} = C \cdot z, \quad (1)$$

where $C = 1200 \text{ pc cm}^{-3}$. The redshift of a transient radio source can be estimated from the residual dispersion measure DM_{excess} , that is, once the Milky Way contribution is subtracted from the observed DM_{obs} measured for the particular source:

$$\begin{aligned} DM_{\text{excess}} &= DM_{\text{obs}} - DM_{\text{MW}} \\ &= \frac{DM_{\text{host}}}{1+z} + DM_{\text{IGM}}, \end{aligned} \quad (2)$$

where DM_{host} is the dispersion measure of the host galaxy environment. The Milky Way dispersion measure DM_{MW} is estimated in this work using the model of Yao et al. (2017; hereafter YMW16). The redshift of the source can be found from Eq. (2).

In principle, a large uncertainty on the redshift estimate is expected due to either the local environment and host galaxy free electron density and inclination (Xu & Han 2015; Luo et al. 2018) and to the high variance $\sigma_{\text{DM}}^2(z)$ of the unknown

baryon halos and sub-structures along the LOS (McQuinn 2014; Dolag et al. 2015). In order to take into account these two sources of uncertainty – affecting DM_{host} and DM_{IGM} respectively in Eq. (2) – we calculated the $\langle V/V_{\max} \rangle$ building appropriate probability functions for the redshifts PDF(z), rather than a unique value as obtained through Eq. (1).

Firstly we needed to model the host galaxy contribution DM_{host} . Xu & Han (2015) estimated DM_{host} for different galaxy morphologies and inclination angles i with respect to the LOS. In particular, for spiral galaxies they fitted skew normal functions $f(DM, i)$ to the DM_{host} distributions for different values of the inclination angle i . We found the overall DM_{host} PDF ($P(DM_{\text{host}})$) by averaging the functions $f(DM, i)$, each weighted with the probability of the inclination angle $\sin i$. We extracted the DM_{host} values from $P(DM_{\text{host}})$. This allowed us to calculate the redshift z_{peak} , corresponding to the most probable value to be associated to the DM_{excess} of the j th FRB. The DM distribution of the host galaxy and environment has been also estimated by Luo et al. (2018). They obtained in general a smaller contribution of DM_{host} to the DM_{excess} than what derived by Xu & Han (2015). This is probably due to the simplistic but more conservative assumption of a MW, M31-like galaxy as a host environment in the latter work, from which we derived the DM_{host} distribution.

The other source of uncertainty is related to the variance of DM_{IGM} . This has been studied for example by McQuinn (2014) and Dolag et al. (2015). We considered the scenario giving the largest $\sigma_{\text{DM}}(z)$ as reported in McQuinn (2014), obtained with a baryon (i.e. n_e) distribution tracing the dark matter halos above a certain mass threshold. Although dedicated simulations show smaller uncertainties (McQuinn 2014; Dolag et al. 2015) we chose the most conservative $\sigma_{\text{DM}}(z)$ relation, represented by the power-law function:

$$\sigma_{\text{DM}}(z) = \frac{379.2}{C_{1200}} z^{0.313}, \quad (3)$$

where C_{1200} is the coefficient C in units of 1200 pc cm^{-3} .

We calculated an inferior (z_{inf}) and superior value (z_{sup}) for the redshift in the PDF by introducing the left and right standard deviations $\sigma_{\text{DM}}(z)$ respectively in the RHS of Eq. (2):

$$DM_{\text{excess}} \equiv C \cdot z_{\text{inf}} + \sigma_{\text{DM}}(z_{\text{inf}}) + \frac{DM_{\text{host}}}{1+z_{\text{inf}}}, \quad (4)$$

$$DM_{\text{excess}} \equiv C \cdot z_{\text{sup}} - \sigma_{\text{DM}}(z_{\text{sup}}). \quad (5)$$

In the second equation a null DM_{host} contribution gives an upper limit to the redshift distribution. The PDF was then shaped as an asymmetric Gaussian: the peak of the PDF was assigned to the redshift z_{peak} ; the left and right dispersion are $\sigma_{\text{DM}}(z_{\text{inf}}) = z_{\text{peak}} - z_{\text{inf}}$ and $\sigma_{\text{DM}} = z_{\text{sup}} - z_{\text{peak}}$ respectively, where $z_{\text{inf}} < z_{\text{peak}} < z_{\text{sup}}$.

To calculate the Galactic contribution to the DM (DM_{MW}) we considered two n_e models: the NE2001 model (Cordes & Lazio 2001) and the model of YMW16³. Assuming different models for the MW free electron contribution did not significantly affect the redshift distribution of the FRB sample. The same result has also been found by Luo et al. (2018) who also considered the presence of a free electron dark halo around the Milky Way. Its effect is found to be negligible however. This enabled us to base our analysis assuming one of the DM models without losing generality. We considered the YMW16 as our baseline model.

³ Online calculators are available respectively at: <https://www.nrl.navy.mil/rsd/RORF/ne2001/model.cgi> <http://www.atnf.csiro.au/research/pulsar/ywm16>

Up to now we accounted for the stochastic dispersion around the $DM_{IGM}(z)$ relation. However, an additional source of uncertainty can systematically arise from the choice of the average $DM_{IGM}(z)$ relation, namely the C coefficient of Eq. (2). In fact simulations (Dolag et al. 2015) show a lower value than the one derived from modelling of the free electron density in the IGM. To account also for this systematic effect we calculated redshift uncertainties assuming different values of C in the range [950, 1200].

In general, large values of C decrease both the redshift z and the maximum observable redshift z_{max} , but by a slightly different amount, making the average $\langle V/V_{max} \rangle$ to also decrease. However, the relative change of the $\langle V/V_{max} \rangle$ values, for the C values considered, is limited to less than 3% for all spectral indexes. For simplicity, we thus assumed $C = 1200$.

3.1. $\langle V/V_{max} \rangle$ of the FRB samples

The cosmological $\langle V/V_{max} \rangle$ test is defined as the average over the sample of the ratios between the volume of space included within the source distance and the maximum volume in which an event, holding the same intrinsic properties, could have been observed. In terms of comoving distance $D(z)$:

$$\left\langle \frac{V}{V_{max}} \right\rangle = \frac{1}{N} \sum_{i=0}^N \left[\frac{D^3(z)}{D_{max}^3(z_{max})} \right]_i, \quad (6)$$

where N is the total number of FRBs in one sample, $D(z)$ and z are, respectively, the comoving distance and redshift of each object. D_{max} and z_{max} are the same quantities that would be evaluated if that same source was observed at the limiting threshold of the same survey that found it, that is if its measured fluence \mathcal{F}_v (or S/N) coincided with the survey detection thresholds, $\mathcal{F}_{v,lim}$ (or S/N_{lim}), assuming the same intrinsic properties of the event.

A large value of $\langle V/V_{max} \rangle$ indicates sources distributed closer to the boundary of the volume probed by the given survey. Conversely, a low $\langle V/V_{max} \rangle$ value indicates a population distributed closer to the observer with respect to the total survey-inspected volume.

The largest volume which can be probed $\propto D_{max}^3(z_{max})$ is uniquely defined by the survey (e.g. instrumental) parameters once a cosmology is assumed. It can be expressed in terms of the maximum possible redshift z_{max} at which a given source can be observed with the survey considered. In practice, we solved for z_{max} the equation (see Appendix A for the complete derivation):

$$\frac{D(z)}{D_{max}(z_{max})} = \left[\frac{S/N_{lim}}{S/N} \left(\frac{1+z}{1+z_{max}} \right)^{-\frac{1}{2}-\alpha} \right]^{\frac{1}{2}}, \quad (7)$$

for each FRB in our sample. Here α is the observed spectral index of FRBs. Our formulation of the luminosity–volume test has been implemented for transient events embedded in a non-Euclidean cosmological volume and can be used with any user-defined luminosity function, source distribution, source spectral index and cosmology.

Following Shannon et al. (2018), we assumed a power-law spectrum for the whole FRB population, with non-evolving spectral index α . We considered three possible values of the spectral index $\alpha = 0$, $\alpha = 1.6$ (see Macquart et al. 2019) and $\alpha = 3$ in order to test how the spectral slope affects the estimate of $\langle V/V_{max} \rangle$. Redshift were obtained through a Monte-Carlo extraction, as described at the beginning of this section. By estimating z_{max} for each FRB we can compute $\langle V/V_{max} \rangle$ for the two samples of ASKAP and Parkes FRBs and for the full combined

Table 1. $\langle V/V_{max} \rangle$ for different values of the spectral index α .

α	ASKAP	Parkes	Full sample
0	0.634 ± 0.054	0.443 ± 0.048	0.538 ± 0.109
1.6	0.681 ± 0.049	0.538 ± 0.046	0.624 ± 0.086
3	0.711 ± 0.046	0.593 ± 0.045	0.652 ± 0.075
$\langle z \rangle$	0.429 ± 0.063	0.820 ± 0.120	0.624 ± 0.218

Notes. Values were obtained for the full sample and for the ASKAP and Parkes sub-samples. We assumed $C = 1200$. The mean redshift $\langle z \rangle$ in each sample is also reported.

Table 2. $\langle V/V_{max} \rangle$ obtained at different $\langle z \rangle$ for populations extracted via the Monte Carlo method from the three tested redshift distributions described in the text.

$\langle z \rangle$	CSFR (MD14)	SGRBs (G16)	Const.
0.429	0.536	0.519	0.474
0.624	0.544	0.519	0.464
0.820	0.549	0.516	0.457

ASKAP+Parkes sample. We then repeated the test 10^4 times to account for the stochastic uncertainty on redshift. Considering a spectral index of 1.6 as found by Macquart et al. (2019), we found $\langle V/V_{max} \rangle = 0.681 \pm 0.049$ and $\langle V/V_{max} \rangle = 0.538 \pm 0.046$ for ASKAP and Parkes, respectively, and $\langle V/V_{max} \rangle = 0.624 \pm 0.086$ for the full sample. Values of $\langle V/V_{max} \rangle$ for different values of the spectral index α are reported in Table 1.

3.2. Comparison with simulated populations

We compared the values of the $\langle V/V_{max} \rangle$ obtained for the ASKAP and Parkes samples with the $\langle V/V_{max} \rangle$ expected for different cosmological population of sources. We tested three different redshift density distributions: (i) the cosmic star formation rate (Madau & Dickinson 2014; hereafter MD14); (ii) the short GRBs redshift distribution (as found by Ghirlanda et al. 2016; hereafter G16); (iii) a constant density distribution (i.e. no evolution).

We called “energy function” (EF) the density of sources (in the comoving volume) as a function of their radiated energy (in analogy with the luminosity function). For simplicity, we here neglected any EF evolution in cosmic time, considering only the density evolution corresponding to three cases above (Table 2).

Synthetic populations were generated through a Monte Carlo extraction from a PDF proportional to a given $\psi_k(z)$ which represents the source density (i.e. per unit comoving volume) rate (i.e. per unit comoving time). The sub-scripts $k = 1, 2, 3$ refer to the three cases considered above. By accounting for the cosmological time dilation and volume, the sampling probability density function is:

$$\text{pdf}_k(z) dz \propto \psi_k(z) \cdot (1+z)^{-1} \frac{dV}{dz}(z) dz. \quad (8)$$

We then used the following procedure: we assumed a value of z_{max} as the maximum redshift at which a FRB population can be detected and generate a fake FRB sample from $z = 0$ to $z = z_{max}$. Then we evaluated the average $\langle V/V_{max} \rangle$ and average $\langle z \rangle$ of the synthetic sample corresponding to that z_{max} . The $\langle V/V_{max} \rangle$ calculated from these events was then assigned to the mean redshift $\langle z \rangle$ of the simulated FRBs. It became a point of the plotted curve in Fig. 2. We repeated this procedure for all values of z_{max} in order to obtain the model curves in Fig. 2.

Table 3. Observational and instrumental parameters of FRBs in our sample.

FRB name	gl (deg)	gb (deg)	DM_{obs} (pc cm $^{-3}$)	S/N	S/N_{lim}	Fluence (Jy ms)	w_{obs} (ms)	Flux (Jy)	z^{\dagger}	Ref.
ASKAP										
180525	349.0	50.7	388.1	27.4	9.5	300	3.8	78.9	$0.174^{+0.391}_{-0.123}$	Ma18
180324	245.2	-20.5	431	9.8	9.5	71	4.3	16.51	$0.172^{+0.392}_{-0.121}$	Ma18
180315	13.2	-20.9	479	10.4	9.5	56	2.4	23.34	$0.215^{+0.396}_{-0.142}$	Ma18
180212	338.3	50.0	167.5	18.3	9.5	96	1.81	53.04	$0.022^{+0.321}_{-0.020}$	Sh18
180131	0.6	-50.7	657.7	13.8	9.5	100	4.5	22.22	$0.420^{+0.403}_{-0.210}$	Sh18
180130	5.9	-51.8	343.5	10.2	9.5	95	4.1	23.17	$0.132^{+0.390}_{-0.099}$	Sh18
180128.2	327.8	-48.6	495.9	9.6	9.5	66	2.3	28.7	$0.270^{+0.399}_{-0.164}$	Sh18
180128.0	326.7	52.2	441.4	12.4	9.5	51	2.9	17.6	$0.221^{+0.397}_{-0.144}$	Sh18
180119	199.5	-50.4	402.7	15.9	9.5	110	2.7	40.74	$0.175^{+0.394}_{-0.123}$	Sh18
180110	7.8	-51.9	715.7	35.6	9.5	420	3.2	131.25	$0.472^{+0.406}_{-0.222}$	Sh18
171216	273.9	-48.4	203.1	10.3	9.5	40	1.9	21.06	$0.034^{+0.345}_{-0.030}$	Sh18
171213	200.6	-48.3	158.6	25.1	9.5	133	1.5	88.67	$0.013^{+0.308}_{-0.012}$	Sh18
171116	205.0	-49.8	618.5	11.8	9.5	63	3.2	19.69	$0.372^{+0.404}_{-0.198}$	Sh18
171020	29.3	-51.3	114.1	19.5	9.5	200	3.2	62.5	$0.006^{+0.282}_{-0.006}$	Sh18
171019	52.5	-49.3	460.8	23.4	9.5	219	5.4	40.56	$0.245^{+0.391}_{-0.155}$	Sh18
171004	282.2	48.9	304	10.9	9.5	44	2	22.	$0.095^{+0.381}_{-0.075}$	Sh18
171003	283.4	46.3	463.2	13.8	9.5	81	2	40.5	$0.232^{+0.398}_{-0.150}$	Sh18
170906	34.2	-49.5	390.3	17	9.5	74	2.5	29.6	$0.173^{+0.395}_{-0.123}$	Sh18
170712	329.3	-51.6	312.79	12.7	9.5	53	1.4	37.86	$0.109^{+0.383}_{-0.084}$	Sh18
170707	269.1	-50.5	235.2	9.5	9.5	52	3.5	14.86	$0.053^{+0.361}_{-0.045}$	Sh18
170428	359.2	-49.9	991.7	10.5	9.5	34	4.4	7.73	$0.716^{+0.416}_{-0.263}$	Sh18
170416	337.6	-50	523.2	13	9.5	97	5	14.4	$0.293^{+0.402}_{-0.173}$	Sh18
170107	266.0	51.4	609.5	16	9.5	58	2.4	24.17	$0.376^{+0.402}_{-0.198}$	Ba17
Parkes										
160102	18.9	-60.8	2596.1	16	10	1.8	3.4	1.06	$2.097^{+0.473}_{-0.381}$	Bh18
151230	239.0	34.8	960.4	17	10	1.9	4.4	0.86	$0.682^{+0.412}_{-0.257}$	Bh18
151206	32.6	-8.5	1909.8	10	10	0.9	3	0.6	$1.395^{+0.445}_{-0.332}$	Bh18
150610	278.0	16.5	1593.9	18	10	1.3	2	0.53	$1.155^{+0.437}_{-0.312}$	Bh18
150418	232.7	-3.2	776.2	39	10	1.76	0.8	2.2	$0.247^{+0.405}_{-0.157}$	Ke16
150215	24.7	5.3	1105.6	19	10	2.02	2.88	0.7	$0.582^{+0.411}_{-0.242}$	Pe17
140514	50.8	-54.6	562.7	16	10	1.32	2.82	0.47	$0.331^{+0.404}_{-0.186}$	Pe15
131104	260.6	-21.9	779	34	10	2.75	2.37	1.16	$0.352^{+0.403}_{-0.192}$	Sh16
130729	324.8	54.7	861	14	10	3.43	15.61	0.22	$0.602^{+0.411}_{-0.246}$	Ch15
130628	226.0	30.7	469.88	29	10	1.22	0.64	1.91	$0.230^{+0.396}_{-0.149}$	Ch15
130626	7.5	27.4	952.4	21	10	1.47	1.98	0.75	$0.648^{+0.413}_{-0.253}$	Ch15
121002	308.2	-26.3	1629.18	16	10	2.34	5.44	0.43	$1.240^{+0.439}_{-0.319}$	Ch15
120127	49.3	-66.2	553.3	13	9	0.75	1.21	0.62	$0.331^{+0.399}_{-0.186}$	Th13
110703	81.0	-59.0	1103.6	17	9	1.75	4.3	0.41	$0.817^{+0.422}_{-0.276}$	Th13
110626	355.9	-41.8	723	12	9	0.89	1.41	0.63	$0.471^{+0.407}_{-0.222}$	Th13
110220	50.8	-54.8	944.38	54	9	7.31	6.59	1.11	$0.674^{+0.417}_{-0.257}$	Th13
110214	290.7	-66.6	168.9	13	5	51.3	1.9	27.	$0.022^{+0.329}_{-0.020}$	Pe18
090625	226.4	-60.0	899.55	30	10	2.19	1.92	1.14	$0.634^{+0.415}_{-0.251}$	Ch15
010621	25.4	-4.0	745	18	8	4.24	8.	0.53	$0.228^{+0.399}_{-0.148}$	Pe16
010125	356.6	-20.0	790	25	7	5.72	10.6	0.54	$0.495^{+0.406}_{-0.226}$	Ke12

Notes. † Redshifts z are calculated from DMs as in Sect. 3.

References. In the last column we report the references for the S/N_{lim} : Ma18: [Macquart et al. \(2019\)](#); Sh18: [Shannon et al. \(2018\)](#), Ba17: [Bannister et al. \(2017\)](#); Bh18: [Bhandari et al. \(2018\)](#); Ke17: [Keane et al. \(2016\)](#); Pe17: [Petroff et al. \(2017\)](#); Pe15: [Petroff et al. \(2015\)](#); Sh16: [Shand et al. \(2016\)](#); Ch15: [Champion et al. \(2015\)](#); Sc16: [Scholz et al. \(2016\)](#); Th13: [Thornton et al. \(2013\)](#); Pe18: [Petroff et al. \(2018\)](#); ke12: [Keane et al. \(2012\)](#). Parkes FRBs parameters are taken from [Petroff et al. \(2016\)](#) when available, or from the reference in the last column.

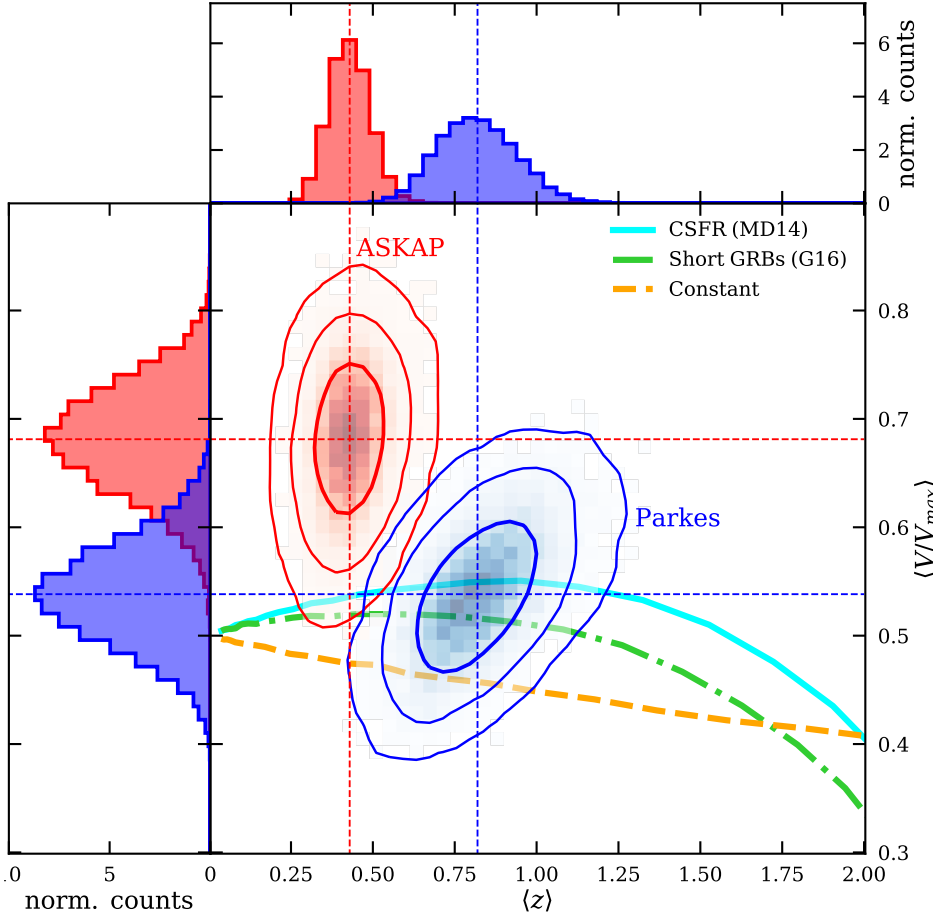


Fig. 2. $\langle V/V_{\max} \rangle$ of the ASKAP and Parkes FRB samples (red and blue squares, respectively) computed accounting for the cosmological terms (K -correction and rate) and the redshifts dispersion. Contours represent the 1-, 2- and 3- σ uncertainties on $\langle V/V_{\max} \rangle$. A spectral index $\alpha = 1.6$ is assumed in this figure. Similar plots obtained with other possible values of the spectral index are shown in Fig. 3. The lines show the trends of $\langle V/V_{\max} \rangle$ as a function of increasing average redshift (i.e. survey depth). The different colours (styles) thick lines show the results of the evolution of $\langle V/V_{\max} \rangle$ obtained assuming different star formation rates (as labelled, see also Sect. 5).

The value of z_{\max} is linked to the value of the intrinsic energy of the FRB through Eq. (A.10), once the dependence of S/N on the energy, intrinsic duration and distance is made explicit (see Appendix A):

$$D_{\max}^2(z_{\max})(1+z_{\max})^{\alpha+\frac{1}{2}} = \frac{E_{\nu}(\nu_{\text{obs}})}{4\pi A (w_{\text{rest}}/\text{ms})^{1/2}}, \quad (9)$$

where $D_{\max}(z_{\max})$ is the proper distance at redshift z_{\max} ; $E_{\nu}(\nu_{\text{obs}})$ is the energy density of the FRB at the observed frequency $\nu_{\text{obs}} \approx 1.3$ GHz. The constants $A = 23.16$ Jy ms for ASKAP and $A = 0.54$ Jy ms for Parkes specify the fluence limit of the two instruments:

$$F_{\text{lim}}(\nu_{\text{obs}}) = A \sqrt{\frac{w'_{\text{obs}}}{\text{ms}}} = A \left(\frac{w_{\text{rest}}}{\text{ms}} \right)^{1/2} (1+z_{\max})^{1/2} [\text{Jy ms}], \quad (10)$$

where $w'_{\text{obs}} = w_{\text{rest}}(1+z_{\max})$ is the pulse duration we would observe if the FRB were located at redshift z_{\max} . Therefore fixing z_{\max} for a given extraction implies choosing the same intrinsic energy density $E_{\nu}(\nu_{\text{obs}})$ for all FRBs of the fake sample generated according to that z_{\max} .

We note that the resulting curve $\langle V/V_{\max} \rangle$ as a function of $\langle z \rangle$ is actually independent of the instrument (i.e. of the A parameter). In fact, if the A parameter is changed (namely, for different flux limits of the survey), at a given z_{\max} the corresponding value of $E_{\nu}(\nu_{\text{obs}})$ changes, but the curve remains the same.

4. Results

The $\langle V/V_{\max} \rangle$ test that we performed here includes the cosmological terms (K -correction and time dilation) arising from considering FRBs at cosmological distances as derived from their large

observed dispersion measures. The $\langle V/V_{\max} \rangle$ for the FRB sample (ASKAP+Parkes) and individually for the two sub-samples (ASKAP and Parkes) are shown in Table 1 for different assumed spectral index α of the FRB intrinsic spectrum.

Figure 2 shows the $\langle V/V_{\max} \rangle$ values distributions, obtained from the Monte-Carlo extraction, as a function of the average redshift for the two samples for ASKAP and Parkes. Values obtained assuming different α are shown in Fig. 3. Solid contours show 1-, 2- and 3- σ level of confidence estimated via a bootstrap re-sampling of the FRB population's redshift.

The different curves show the expected $\langle V/V_{\max} \rangle$ as a function of mean redshift for the assumed density distributions (see Sect. 3.2). The extension of the curves before their respective turnover is due to the different redshift where the assumed density distributions peak (see also Fig. 4, bottom panel).

We find the values calculated for the sub-samples differing of $\Delta\langle V/V_{\max} \rangle \approx 0.12$. We note that they probe different volumes. The Parkes $\langle V/V_{\max} \rangle$ is fully consistent with a cosmic stellar population (CSFR – cyan solid line in Fig. 2) or its delayed version (dot-dashed green line in Fig. 2). The ASKAP sample instead deviates from the CSFR scenario. An evidence for the difference between the ASKAP and Parkes FRB populations has also been reported by J18, who find different slopes of the source count distribution for the two sub-samples. They also report the difference to be inconsistent with the one which is expected to be due to the different volumes probed by the two surveys.

The larger $\langle V/V_{\max} \rangle$ obtained for the ASKAP sample suggests a faster evolution with respect to the CSFR up to the distances currently explored by the ASKAP survey. This large value can not be explained even considering a delayed-CSFR (green dot-dashed line in Fig. 2) or a different spectral index for the

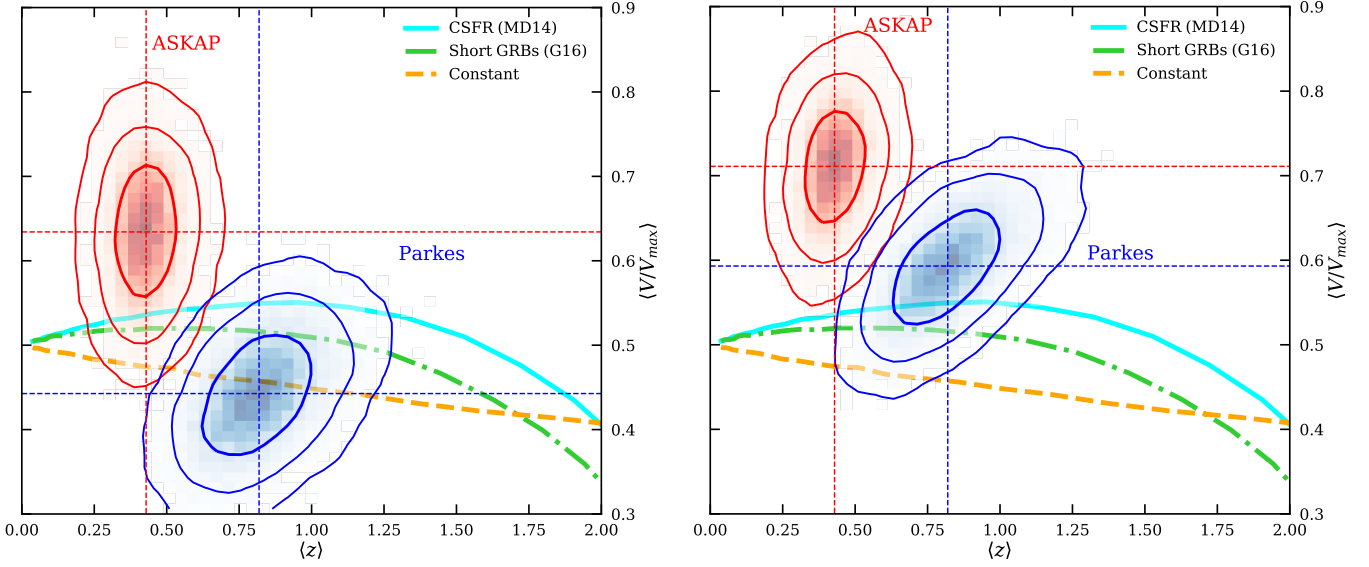


Fig. 3. Same as Fig. 2 where we assumed different FRB spectral index α . *Left panel:* $\alpha = 0$; *right panel:* $\alpha = 3$.

FRB spectrum, nor a different $DM_{\text{IGM}}(z)$ relation. Overall, the ASKAP FRBs hint to a population of sources with a redshift density distribution different from those considered above (i.e. CSFR, delayed-CSFR as derived for short GRBs or constant formation rate).

5. Discussion

We have found that none of the population distributions adopted can account for the observed $\langle V/V_{\max} \rangle$. We demonstrate here that this result is independent of the particular shape of the energy function, as long as it does not evolve in cosmic time. In the procedure we have adopted, each point of the curves in Fig. 2 corresponds to a population of sources having the same energy, calculated in such a way that its fluence corresponds to the limiting fluence once the source is at its z_{\max} . Smaller $\langle z \rangle$ correspond to less energetic sources.

In reality we have a distribution of energy, each corresponding to a different $\langle V/V_{\max} \rangle$, and $\langle z \rangle$. This pairs of values, however, belong to the shown curve. As an example, consider a specific EF, say a power law in energy $N(E) \propto E^{-\Gamma}$, with Γ positive. There will be many points at low energies, corresponding to smaller $\langle z \rangle$ for the curve in Fig. 2. Many sources at lower $\langle z \rangle$ means that the corresponding $\langle V/V_{\max} \rangle$ will be weighted more when calculating the final $\langle V/V_{\max} \rangle$. Still, the final value is constrained to be within the minimum and maximum values of the curve. As can be seen in Fig. 2 no curve can account for the $\langle V/V_{\max} \rangle$ of the ASKAP sample.

5.1. Cosmic star formation rate

Motivated by the strong hints on compact objects as sources of FRBs we considered a population with a rate density distribution described by the cosmic star formation:

$$\psi(z) = a_0 \frac{(1+z)^{a_1}}{1 + \left(\frac{1+z}{1+z_p}\right)^{a_2}}. \quad (11)$$

We adopted the parameters as reported by [Madau & Dickinson \(2014\)](#), $a_0 = 0.015$, $a_1 = 2.7$, $a_2 = 5.7$, and $z_p = 1.9$. For $a_1 > 0$

and $a_2 > 1$ the formation rate peaks at z_p with an increasing rate, for $z < z_p$, with slope a_1 . The $\langle V/V_{\max} \rangle$ as a function of $\langle z \rangle$ obtained with this function is shown in Fig. 2 (solid cyan line). The comparison with the ASKAP and Parkes values shows that a density evolution of FRBs following the star formation rate (Eq. (11)) is consistent with the Parkes $\langle V/V_{\max} \rangle$ value, but is largely below the ASKAP point (which is $\sim 3\sigma$ above the expectation for a population distributed as Eq. (11)).

5.2. Phenomenological “FRB formation rate”

The increase with redshift ($\propto (1+z)^{p_1}$ at low z) of the CSFR as represented by Eq. (11) is too shallow to account for the ASKAP point. In order to account for the values of $\langle V/V_{\max} \rangle$ of both the ASKAP and Parkes sub-samples we used the form:

$$\text{FRBFR}(z) = p_0 \frac{z^{p_1}}{1 + (z/z_p)^{p_2}}. \quad (12)$$

The large $\langle V/V_{\max} \rangle$ of ASKAP is found at an average redshift significantly smaller than the redshift where the CSFR peaks (see the bottom panel of Fig. 4). We have verified that we can reproduce both the ASKAP and the Parkes $\langle V/V_{\max} \rangle$ values using $p_0 = 1$, $p_1 = 3.7$, $p_2 = 4.8$ and $z_p = 0.6$. We stress that this does not correspond to a formal fit and other possible functional forms could well be consistent with the two points. Proper model selection and parameter fitting is out of the scope of the current work. Here we wanted to find an empirical density distribution which we can a-posteriori compared with the cosmic star formation rate.

The model described above is shown by the solid red line in Fig. 4 (top panel). For comparison, also the model curve obtained from the CSFR described in the previous section is shown (dotted cyan line).

5.3. Delayed cosmic star formation rate

One possibility (e.g. motivated by the similar case of short GRBs) is that the progenitors of FRBs produce the radio flashes at some advanced stage of their evolution. This would introduce a delayed density distribution which in the simplest case can be

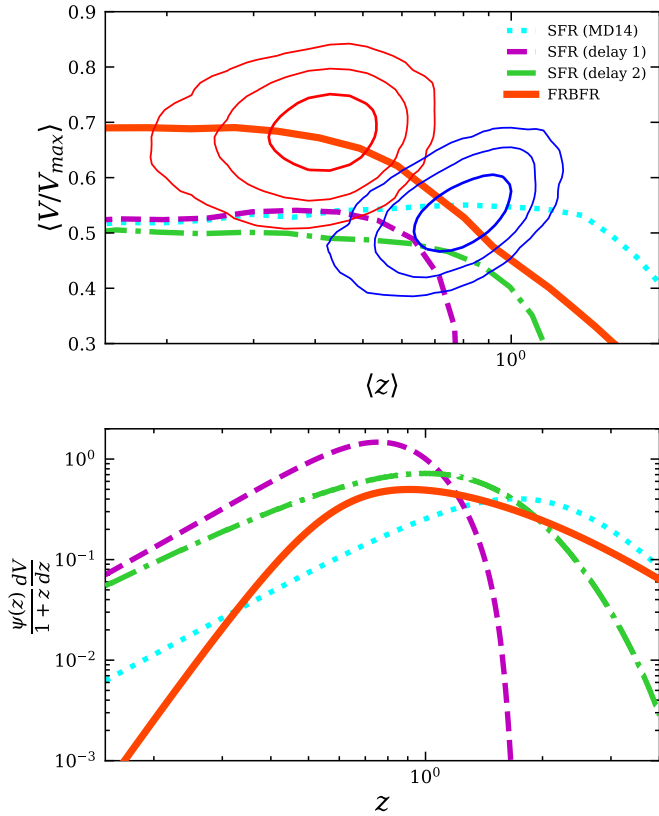


Fig. 4. Simulated populations obtained from different redshift density distributions $\psi_k(z)$. *Upper panel:* $\langle V/V_{\max} \rangle$ as function of the average observable redshift. Contours show the ASKAP and Parkes confidence levels assuming $\alpha = 1.6$ (see Fig. 2). *Bottom panel:* normalised source rate as function of redshift. Distributions are normalised to their integral.

modelled starting from the CSFR as (see G16)

$$\Psi(z) = \int_z^\infty \psi(z') P(t(z) - t(z')) \frac{dt}{dz'} dz'. \quad (13)$$

For the delay function we considered (1) a normal PDF centred on 4 Gyr with a dispersion $\sigma = 0.1$ Gyr, and (2) a power-law with slope $\propto \tau^{-1}$ with a minimum delay equal to 1 Gyr. The latter is what is expected for the merging of compact objects (Greggio 2005; Belczynski et al. 2006; Mennekens et al. 2010; Ruitter et al. 2011; Mennekens & Vanbeveren 2016; Cao et al. 2018). The $\langle V/V_{\max} \rangle$ curves obtained with these two models are shown in Fig. 4 (top panel) by the dashed (magenta) and dot-dashed (green) lines, respectively. The resulting source rate are plotted in Fig. 4 (bottom panel) in purple and green colour respectively. Although they peak at later times by construction, none of the delay models look to be consistent with the ASKAP data. In fact the effect of the delay is just to move the maximum value attainable for the $\langle V/V_{\max} \rangle$ to later times (i.e. smaller redshifts), but does not increase enough to become consistent with the ASKAP value (cf. Fig. 4, upper panel).

6. Conclusions

We have performed the $\langle V/V_{\max} \rangle$ test for two different FRB samples, assuming that their distances are cosmological. Having characterised each sample through its average redshift, we have verified that the value of $\langle V/V_{\max} \rangle$ for the Parkes sample

is similar to the one derived assuming that FRBs follow the star formation rate. This would indicate that FRBs can be associated to compact stars, such as neutron stars. Instead, for the ASKAP sample, sampling a closer volume but slightly more energetic FRBs, the value of $\langle V/V_{\max} \rangle$ is larger than the one derived with a population following the star formation rate. This result depends negligibly on the assumed FRB spectral index and has been determined accounting for the different sources of uncertainty on the estimate of the redshift of FRBs taking on a conservative approach.

At face value, this suggests that the progenitors of FRBs evolve in cosmic time faster than the star formation, and reach their maximum at redshift between the average redshift of the ASKAP and Parkes samples. Such fast evolution at relatively low redshifts can be due to a density evolution faster than the star formation rate, or to a luminosity (and energy) evolution superposed to a standard star formation rate. This is intriguing, because it would suggest a very peculiar population for the FRB progenitors, but at this stage we are not able to disentangle between these possibilities. A possibility is that, similarly to short Gamma Ray Bursts, there is a delay between the formation of the stars producing the FRB phenomenon and the FRB event. However, we verified that this cannot produce the steep rise (as a function of redshift) of event rate up to $z \sim 0.3$ – 0.4 needed to account for the observed ASKAP $\langle V/V_{\max} \rangle$. The phenomenological “FRB formation rate” we have found, that can fit both the ASKAP and Parkes $\langle V/V_{\max} \rangle$ cannot be interpreted in a simple way on the basis of known population of sources. While the investigations of possibilities is demanded to a future work, we stress the need of having a survey exploring the same (large) sky area of ASKAP, but with a fluence limit comparable to Parkes. This will show how the FRB population evolves in time in the interesting 0.3–2 redshift range.

Acknowledgements. NL acknowledges financial support from the Horizon 2020 programme under the ERC Starting Grant “MAGCOW”, no. 714196. He also thanks F. Locatelli, A. Fasolini and S. Guadagna for useful and interesting discussions. G. Ghisellini and G. Ghirlanda acknowledge the PRIN-INAF 2017 “Towards the SKA and CTA era: discovery, localisation, and physics of transient sources”. We thank the anonymous referee for her/his critical comments that helped to improve the paper.

References

- Bannister, K. W., Shannon, R. M., Macquart, J.-P., et al. 2017, *ApJ*, 841, L12
- Bhandari, S., Keane, E. F., Barr, E. D., et al. 2018, *MNRAS*, 475, 1427
- Belczynski, K., Perna, R., Bulik, T., et al. 2006, *ApJ*, 648, 1110
- Beloborodov, A. M. 2017, *ApJ*, 843, L26
- Caleb, M., Flynn, C., Bailes, M., et al. 2016, *MNRAS*, 458, 708
- Cao, X.-F., Yu, Y.-W., & Zhou, X. 2018, *ApJ*, 858, 89
- Champion, D. J., Petroff, E., Kramer, M., et al. 2016, *MNRAS*, 460, L30
- Chatterjee, S., Law, C. J., Wharton, R. S., et al. 2017, *Nature*, 541, 58
- Cole, S., Norberg, P., Baugh, C. M., et al. 2001, *MNRAS*, 326, 255
- Cordes, J. M., & Lazio, T. J. W. 2001, ArXiv e-prints [arXiv:astro-ph/0207156]
- Cordes, J. M., & Wasserman, I. 2015, *MNRAS*, 457, 232
- Dolag, K., Gaensler, B. M., Beck, A. M., & Beck, M. C. 2015, *MNRAS*, 451, 4277
- Falcke, H., & Rezzolla, L. 2014, *A&A*, 562, A137
- Fuller, J., & Ott, C. D. 2015, *MNRAS*, 450, L71
- Ghirlanda, G., Salafia, O. S., Pescalli, A., et al. 2016, *A&A*, 594, A84
- Ghisellini, G. 2017, *MNRAS*, 465, L30
- Ghisellini, G., & Locatelli, N. 2018, *A&A*, 613, A61
- Greggio, L. 2005, *A&A*, 441, 1055
- James, C. W., Ekers, R. D., Macquart, J.-P., Bannister, K. W., & Shannon, R. M. 2019, *MNRAS*, 483, 1342
- Kashiyama, K., Ioka, K., & Meszaros, P. 2013, *ApJ*, 776, L39
- Katz, J. I. 2017, *MNRAS*, 472, L85
- Katz, J. I. 2018, *MNRAS*, 481, 2946

- Keane, E. F., & Petroff, E. 2015, *MNRAS*, **447**, 2852
- Keane, E. F., Stappers, B. W., Kramer, M., & Lyne, A. G. 2012, *MNRAS*, **425**, L71
- Keane, E. F., Johnston, S., Bhandari, S., et al. 2016, *Nature*, **530**, 453
- Keith, M. J., Jameson, A., van Straten, W., et al. 2010, *MNRAS*, **409**, 619
- Kulkarni, S. R. 2018, *Nat. Astron.*, **2**, 832
- Kumar, P., Lu, W., & Bhattacharya, M. 2017, *MNRAS*, **468**, 2726
- Inoue, S. 2004, *MNRAS*, **348**, 999
- Ioka, K. 2003, *ApJ*, **598**, L79
- Li, L.-B., Huang, Y.-F., Zhang, Z.-B., Li, D., & Li, B. 2017, *Res. Astron. Astrophys.*, **17**, 6
- Loeb, A., Shvartzvald, Y., & Maoz, D. 2014, *MNRAS*, **439**, L46
- Lorimer, D. R., Bailes, M., McLaughlin, M. A., Narkevic, D. J., & Crawford, F. 2007, *Science*, **318**, 777
- Lyubarsky, Y. 2014, *MNRAS*, **442**, L9
- Luo, R., Lee, K., Lorimer, D. R., & Zhang, B. 2018, *MNRAS*, **481**, 2320
- Macquart, J.-P., Bailes, M., Bhat, N. D. R., et al. 2010, *PASA*, **27**, 272
- Macquart, J.-P., Shannon, R. M., Bannister, K. W., et al. 2019, *ApJ*, **872**, L19
- Madau, P., & Dickinson, M. 2014, *ARA&A*, **52**, 415
- Maoz, D., Loeb, A., Shvartzvald, Y., et al. 2015, *MNRAS*, **454**, 2183
- Marcote, B., Paragi, Z., Hessels, J. W. T., et al. 2017, *ApJ*, **834**, L8
- McQuinn, M. 2014, *ApJ*, **780**, L33
- Mennekens, N., & Vanbeveren, D. 2016, *A&A*, **589**, A64
- Mennekens, N., Vanbeveren, D., de Greve, J., & de Donder, E. 2010, *ASP Conf. Ser.*, **435**
- Oppermann, N., Connor, L. D., & Pen, U. L. 2016, *MNRAS*, **461**, 984
- Osłowski, S., Shannon, R. M., Jameson, A., et al. *ATel*, **11396**
- Petroff, E., Bailes, M., Barr, E. D., et al. 2015, *MNRAS*, **447**, 246
- Petroff, E., Barr, E. D., Jameson, A., et al. 2016, *PASA*, **33**, e045
- Petroff, E., Burke-Spolaor, S., Keane, E. F., et al. 2017, *MNRAS*, **469**, 4465
- Platts, E., Weltman, A., Walters, A., et al. 2018, *Phys. Rep.*, submitted [arXiv:1810.05836]
- Popov, S. B., & Postnov, K. A. 2010, in *Proc. of the Conference dedicated to Viktor Ambartsumian's 100th Anniversary*, eds. H. A. Harutyunian, A. M. Mickaelian, & Y. Terzian (Yerevan: Publishing House of NAS RA), 129
- Press, W. H., Flannery, B. P., & Teukolsky, S. A. 1986, *Numerical Recipes. The Art of Scientific Computing* (Cambridge: University Press)
- Price, R., et al. 2018, *ATel*, **11376**
- Ruiter, A. J., Belczynski, K., Sim, S. A., et al. 2011, *MNRAS*, **417**, 408
- Schmidt, M. 1968, *ApJ*, **151**, 393
- Scholz, P., Spitler, L. G., Hessels, J. W. T., et al. 2016, *ApJ*, **833**, 177
- Shand, Z., Ouyed, A., Koning, N., & Ouyed, R. 2016, *Res. Astron. Astrophys.*, **16**, 80
- Shannon, R. M., Macquart, J.-P., Bannister, K. W., et al. 2018, *Nature*, **562**, 386
- Spitler, L. G., Cordes, J. M., Hessels, J. W. T., et al. 2014, *ApJ*, **790**, 101
- Tendulkar, S. P., Bassa, C. G., Cordes, J. M., et al. 2017, *ApJ*, **834**, L7
- Thornton, D., Stappers, B., Bailes, M., et al. 2013, *Science*, **341**, 53
- Totani, T. 2013, *PASJ*, **65**, L12
- Xu, J., & Han, J. L. 2015, *Res. Astron. Astrophys.*, **15**, 1629
- Yang, Y. P., & Zhang, B. 2017, *ApJ*, **868**, 31
- Yao, J. M., Manchester, R. N., & Wang, N. 2017, *ApJ*, **835**, 29
- Zhang, B. 2014, *ApJ*, **780**, L21

Appendix A: Complete derivation of the cosmological $\langle V/V_{\max} \rangle$ test

A.1. $\langle V/V_{\max} \rangle$ value estimation

The V/V_{\max} computed in this work (Eq. (7)), which accounts for the cosmological k -correction and proper rate of transient FRBs, is derived as follows. We considered the relation:

$$\mathcal{F}(v_{\text{obs}}) = \frac{(1+z)E_v(v_e)}{4\pi D_L^2(z)} \frac{dv_e}{dv_{\text{obs}}} = \frac{E_v(v_e)}{4\pi D^2(z)}, \quad (\text{A.1})$$

where we used the relation between luminosity distance and proper distance: $D_L = (1+z)D$. Analogously:

$$\mathcal{F}_{\text{lim}}(v_{\text{obs}}) = \frac{E_v(v'_e)}{4\pi D_{\max}^2(z_{\max})}, \quad (\text{A.2})$$

where E_v is the intrinsic energy density, $v_e = v_{\text{obs}}(1+z)$ and $v'_e = v_{\text{obs}}(1+z_{\max})$ are the emitted frequencies at proper distances $D(z)$ and $D_{\max}(z_{\max})$, respectively.

We assumed that FRBs have a power-law energy spectrum spectral slope α , at least in a frequency range comparable to that probed by the observer frame frequency $v_{\text{obs}} \simeq 1.3$ GHz. Therefore, we could write:

$$dE \propto v^{-\alpha} dv$$

$$\begin{aligned} E_v(v_e) &= E_v(v'_e) \cdot \left(\frac{v_e}{v'_e} \right)^{-\alpha} \\ &= E_v(v'_e) \cdot \left(\frac{v_{\text{obs}}(1+z)}{v_{\text{obs}}(1+z_{\max})} \right)^{-\alpha} \\ &= E_v(v'_e) \cdot \left(\frac{1+z}{1+z_{\max}} \right)^{-\alpha}. \end{aligned} \quad (\text{A.3})$$

Combining Eqs. (A.1), (A.2) and (A.3) we obtained:

$$\frac{D(z)}{D_{\max}(z_{\max})} = \left[\frac{\mathcal{F}_{\text{lim}}(v_{\text{obs}})}{\mathcal{F}(v_{\text{obs}})} \left(\frac{1+z}{1+z_{\max}} \right)^{-\alpha} \right]^{1/2}. \quad (\text{A.4})$$

From the antenna equation, the signal-to-noise ratio of an event of duration w_{obs} is defined as:

$$S/N = \frac{G S(v) \sqrt{N_P \Delta v w_{\text{obs}}}}{\eta T_{\text{sys}}}, \quad (\text{A.5})$$

where G is the antenna gain, N_P is the number of polarizations, η is the efficiency and T_{sys} is the antenna temperature. The S/N can also be described in terms of the fluence $\mathcal{F}(v) = S(v) w_{\text{obs}}$ as:

$$S/N = \frac{\mathcal{F}(v)}{\sqrt{w_{\text{obs}}}} \frac{G \sqrt{N_P \Delta v}}{\eta T_{\text{sys}}}. \quad (\text{A.6})$$

The limiting threshold over which an FRB is detected can also be described in terms of S/N:

$$S/N_{\text{lim}} = \frac{\mathcal{F}_{\text{lim}}(v)}{\sqrt{w'_{\text{obs}}}} \frac{G \sqrt{N_P \Delta v}}{\eta T_{\text{sys}}}. \quad (\text{A.7})$$

where $w'_{\text{obs}} = w_{\text{rest}}(1+z_{\max})$; all the parameters related to the observing conditions/setup (G , N_P , Δv , η and T_{sys}) are the same when we want to look for the maximum distance at which the FRB could be observed. However, the observed duration of the transient event changes with redshift. We thus related the ratios of observed and threshold values with a function of their redshifts:

$$\frac{\mathcal{F}(v)}{\mathcal{F}_{\text{lim}}(v)} = \frac{S/N}{S/N_{\text{lim}}} \left(\frac{1+z}{1+z_{\max}} \right)^{1/2}. \quad (\text{A.8})$$

Through Eq. (A.8) we recast Eq. (A.4) in terms of the S/N with respect to S/N_{lim}

$$\frac{D(z)}{D_{\max}(z_{\max})} = \left[\frac{S/N_{\text{lim}}}{S/N} \left(\frac{1+z}{1+z_{\max}} \right)^{-\frac{1}{2}-\alpha} \right]^{\frac{1}{2}}, \quad (\text{A.9})$$

retrieving Eq. (7). Equivalently one can write it as

$$\frac{S/N}{S/N_{\text{lim}}} D^2(z) (1+z)^{\frac{1}{2}+\alpha} = D_{\max}^2(z) (1+z_{\max})^{\frac{1}{2}+\alpha} \equiv \Upsilon(z_{\max}). \quad (\text{A.10})$$

We put in the right-hand side (RHS) of Eq. (A.10) all the terms depending on z_{\max} . We defined the function $\Upsilon(z_{\max})$ as the RHS. $\Upsilon(z_{\max})$ can be evaluated using the left-hand side (LHS) of the same equation, that is, combining the observed, instrumental and cosmological information. If the functions $D_{\max}(z)$ and $\Upsilon(z)$ are invertible one can in principle solve the above equation for z_{\max} . We note that only for $\alpha > -1/2$ this function is monotonic and invertible. Under this assumption

$$z_{\max} = \Upsilon^{-1} \left[\frac{S/N}{S/N_{\text{lim}}} D^2(z) (1+z)^{\frac{1}{2}+\alpha} \right]. \quad (\text{A.11})$$

The function Υ depends on cosmology through the definition of $D(z)$

$$D(z) = \int_0^z \frac{c dz'}{H_0 \sqrt{\Omega_{\max}(1+z')^3 + \Omega_k(1+z')^2 + \Omega_\Lambda}}, \quad (\text{A.12})$$

and from the spectral index α of the intrinsic FRB specific luminosity.

The estimates of the spectral index is given considering the 23 ASKAP burst signals (Shannon et al. 2018) detected with narrow-band (336 MHz) centred at 1.32 GHz showing intense fine-scale features (Macquart et al. 2019). They calculate a mean spectral index $\alpha = 1.6^{+0.3}_{-0.2}$. This represents the current best (and only) estimate of the spectral index for the non-repeating FRBs, as far as any broad-band information will be given.

The analytic form of Eq. (A.11) is not straightforward to obtain so we solved it numerically.

A.2. S/N and S/N_{lim}

The fact itself that in Eq. (A.11) the ratio between a threshold and the corresponding observed quantity are present (instead of just the observed one) removes the dependency of the test from any survey parameter, since they would play the same role in the definition of both terms in the ratio. The fact that the ratio between observed and threshold S/N is independent of the survey area and time coverage or any other observation parameter has been previously proven by J18 in a rigorous way. Our derivation can be helpful in giving an intuitive and straightforward proof of the fact.

The $(S/N)/(S/N)_{\text{lim}}$ approach has also the advantage that any other quantity which varies linearly with the fluence $\mathcal{F}(v)$ can be used in its place in Eq. (A.11). The smartest choice is to use the S/N, which is the ratio between the amplitude of the time-integrated FRB signal (after the noise level being normalised to 0) and the standard deviation of the noise in the continuum (Petroff et al. 2016).

We chose to use S/N as S/N_{lim} is the quantity which is actually defined in a survey in order to claim a detection, rather than the flux density S_ν or the fluence \mathcal{F}_ν . Moreover, the way the S/N is defined is in principle independent from the pulse broadening effect whenever a signal is detected. In fact, highly-broadened signals could not be recognised as FRB candidates by searching pipelines, but a non-detection does not affect the completeness of the sample in a $\langle V/V_{\max} \rangle$ test.